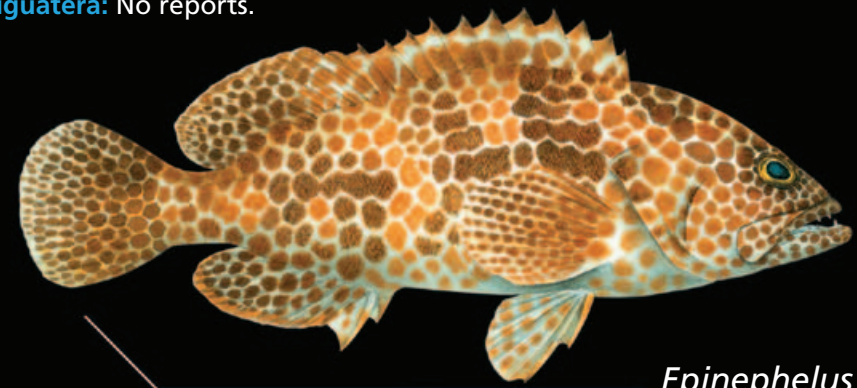


TAU IKA HE ULUULU HA NIUE

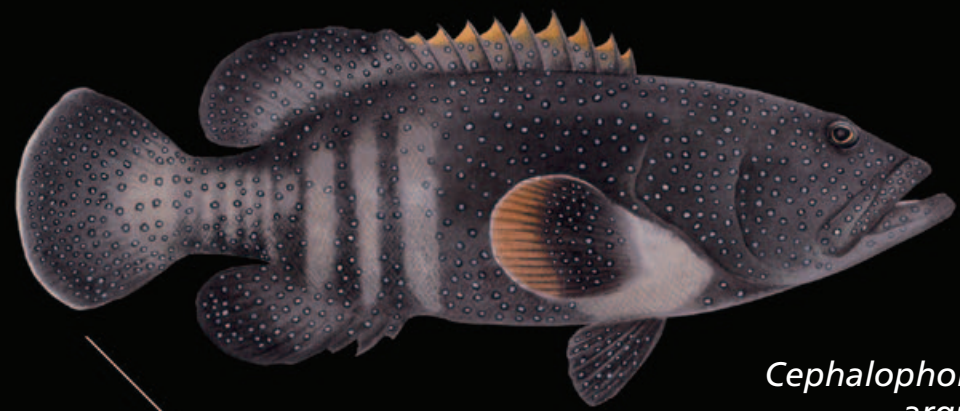
Coastal fish species of Niue

Habitat: Around patch of reefs and tide pools, mostly in shallow waters. 1–50 m.
Max. recorded size: 32 cm.
Food: Fish, crustaceans and cephalopods.
Ciguatera: No reports.



Gatala • Honeycomb grouper

Habitat: Variety of coral habitats from tide pools to reef slopes. 1–40 m.
Max. recorded size: 60 cm.
Food: Mostly fish, but also crustaceans.
Ciguatera: Numerous reports from the western side of the island.



Loi • Peacock hind

Habitat: Deep reefs and steep outer reef slopes. 10–150 m.
Max. recorded size: 57 cm.
Food: Fish and crustaceans including shrimp, crab and stomatopods.
Ciguatera: No reports.



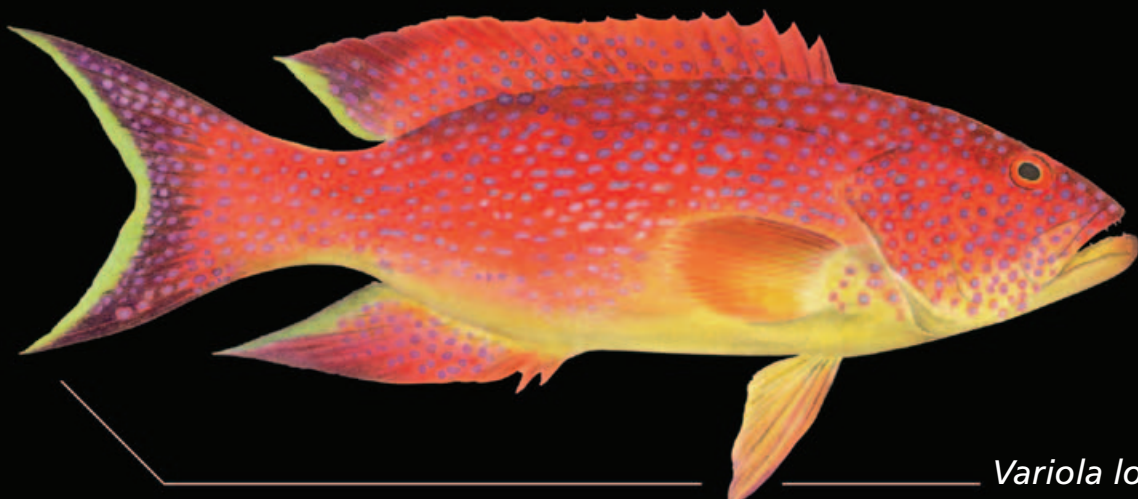
Pelepele • Tomato hind

Habitat: Outer reef areas and slope. 1–60 m.
Max. recorded size: 28 cm.
Food: Mostly fish, but also crustaceans.
Ciguatera: No reports.



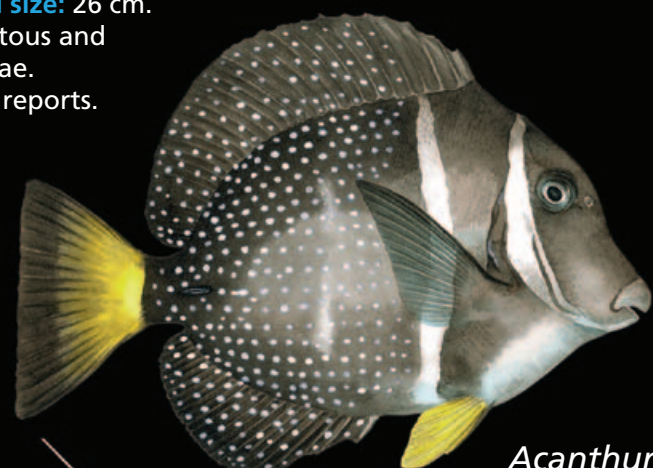
Mataele • Darkfin hind

Habitat: Usually in clear-water areas at depths below 15 m; and prefers islands and offshore reefs. 3–250 m.
Max. recorded size: 83 cm.
Food: Fish, crab, shrimp and stomatopods.
Ciguatera: Rare reports.



Malau pokoahu • Yellowwedged lyretail

Habitat: Surge zone of clear seaward reefs. 0–6 m.
Max. recorded size: 26 cm.
Food: Filamentous and calcareous algae.
Ciguatera: No reports.



Hapi • Whitespotted surgeonfish

Habitat: Moderately turbulent water of exposed reefs. 0–6 m.
Max. recorded size: 26 cm.
Food: Filamentous and small fleshy algae.
Ciguatera: No reports.



Kolala • Achilles tang

Habitat: Coral and outer reefs. 4–180 m.
Max. recorded size: 90 cm.
Food: Mainly fish, but also shrimp, crab and other invertebrates.
Ciguatera: Numerous reports.



Fagamea • Twospot red snapper, Red bass

Habitat: Reef fronts and rocky shorelines exposed to moderate to strong surge. 0–3 m.
Max. recorded size: 30 cm.
Food: Primarily crabs, and other crustaceans, small fish, sea urchins or brittle stars.
Ciguatera: No reports.



Ulutuki • Stocky hawkfish

Habitat: Reef top, mostly over sandy areas. Highly seasonal. 1–35 m.
Max. recorded size: 40 cm.
Food: Small invertebrates.
Ciguatera: No reports.



Kaloama (small), Talakave (big)
Yellowstripe goatfish

Habitat: Sand patches as well as rubble, consolidated limestone, or coral bottoms from reef flats. 3–160 m.
Max. recorded size: 35 cm.
Food: Mostly crab, shrimp and other crustaceans, but also small fish, octopus, gastropods and foraminifera.
Ciguatera: No reports.



Hafulu • Manybar goatfish

Habitat: Inshore coral and rocky reefs. 1–120 m.
Max. recorded size: 70 cm.
Food: Mostly fish, but also crustaceans.
Ciguatera: No reports.



Palu pokoahu • Smalltoothed jobfish



Fotuo • Humpnose big-eye bream

Habitat: Sand and rubble areas near coral reefs. 1–100 m.
Max. recorded size: 60 cm.
Food: Gastropods, ophiuroids, echinoids and other invertebrates (mostly feeds at night).
Ciguatera: Numerous reports.



Monega • Steephead parrotfish

Habitat: Seaward reefs, and reef top at high tide. 1–35 m.
Max. recorded size: 70 cm.
Food: Algal covered surfaces and corals.
Ciguatera: No reports.



Nue • Brassy chub



Fuafua • Fringelip mullet



Ikatea • Common threadfin

Habitat: Turbulent waters of exposed, surf-swept outer reef flats. 1–120 m.
Max. recorded size: 45 cm.
Food: Crab, other invertebrates and fish.
Ciguatera: No reports.



Telekihi, Ta-matapula • Blotcheye soldierfish

Habitat: Near reefs and rocky areas, and over sandy bottoms. 3–80 m.
Max. recorded size: 36 cm.
Food: Fish, crustaceans, and other small invertebrates (mostly feeds at night).
Ciguatera: No reports.



Kaene • Moontail bullseye

Habitat: Reef top at high tide, just at the edge of the reef and in tide pools at low tide. 0–20 m.
Max. recorded size: 60 cm.
Food: Omnivorous.
Ciguatera: No reports.



Ta-gutulua, Nofu • Sabre squirrelfish

Habitat: Reef areas, close to reef margin. 0–100 m.
Max. recorded size: 110 cm.
Food: Adults feed on small fish and crustaceans, while juveniles feed on scales torn from schooling fish.
Ciguatera: No reports.



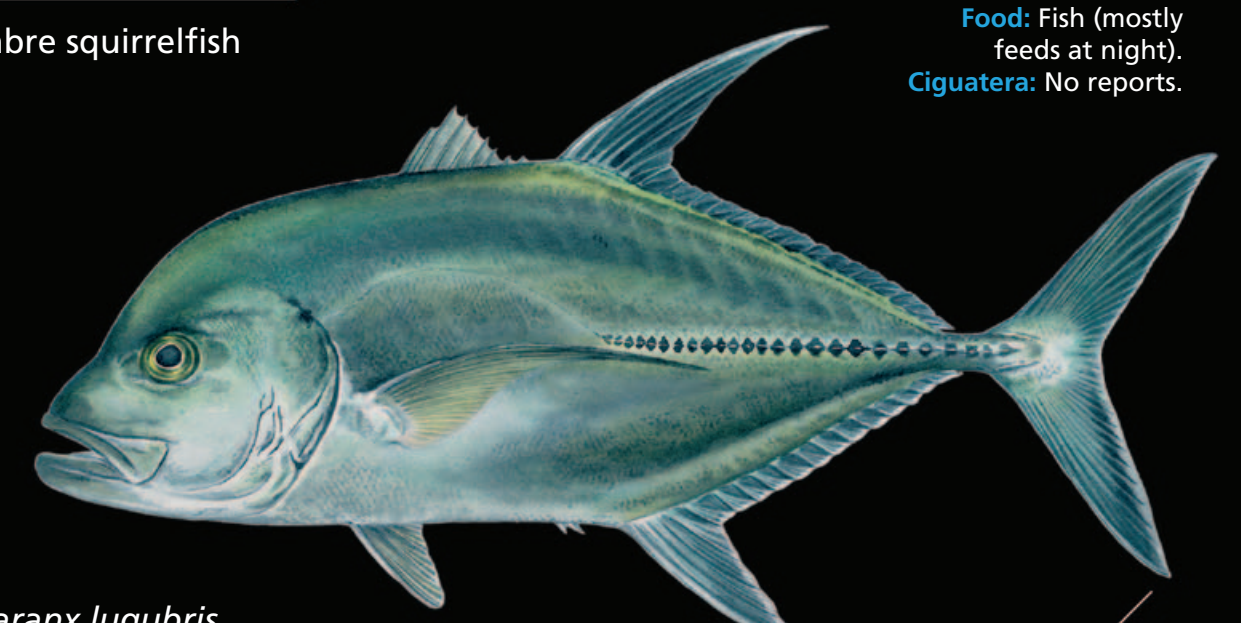
Lai • Doublespotted queenfish

Habitat: Near seaward reefs.
Max. recorded size: 170 cm.
Food: Fish, squid and sometimes shrimp.
Ciguatera: Occasional reports.



Utu • Blackfin barracuda

Habitat: Oceanic and insular species; prefers clear oceanic waters. 10–350 m.
Max. recorded size: 100 cm.
Food: Fish (mostly feeds at night).
Ciguatera: No reports.

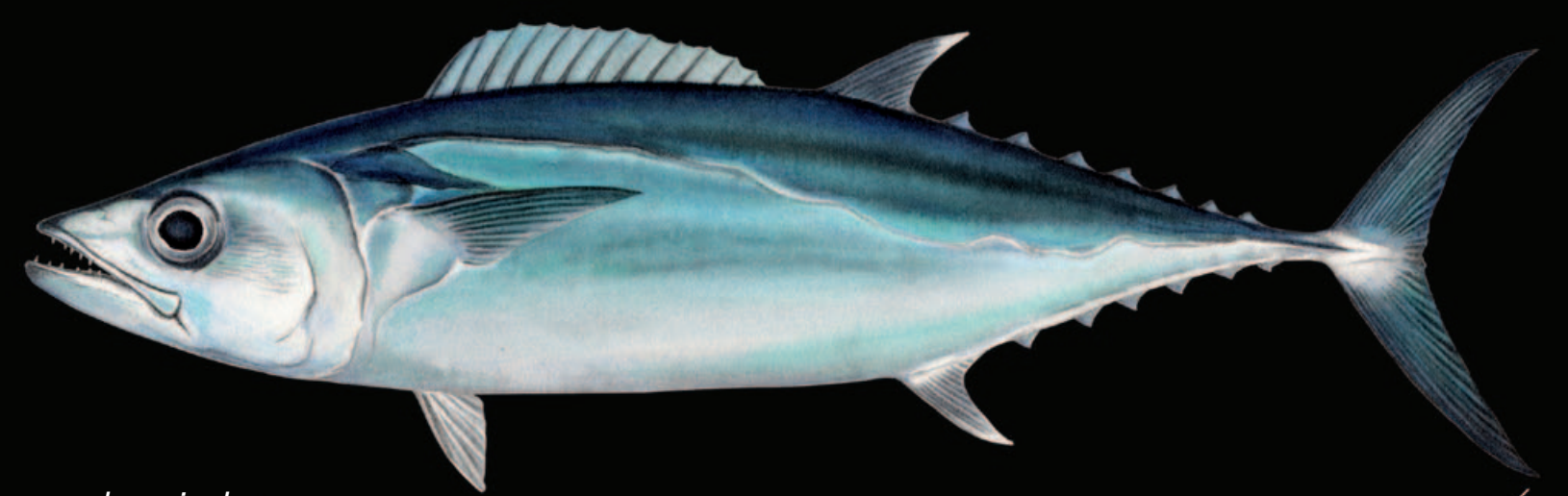


Taufauli • Black jack



Kuokuo • Great barracuda

Habitat: Reef associated. 5–100 m.
Max. recorded size: 248 cm.
Food: Small schooling fish and squid.
Ciguatera: No reports.



Gymnosarda unicolor

Valu • Dogtooth tuna