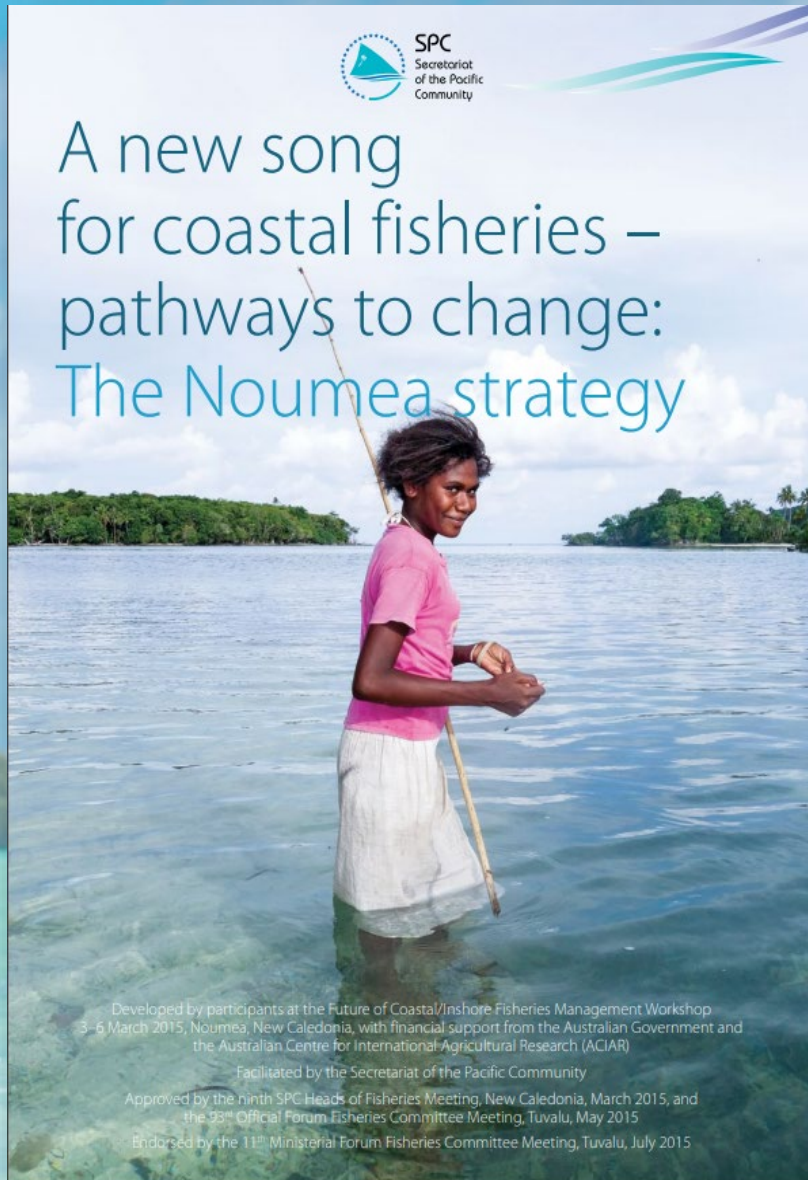


Status of Community-Based Fisheries Management (CBFM) in the Pacific



Content

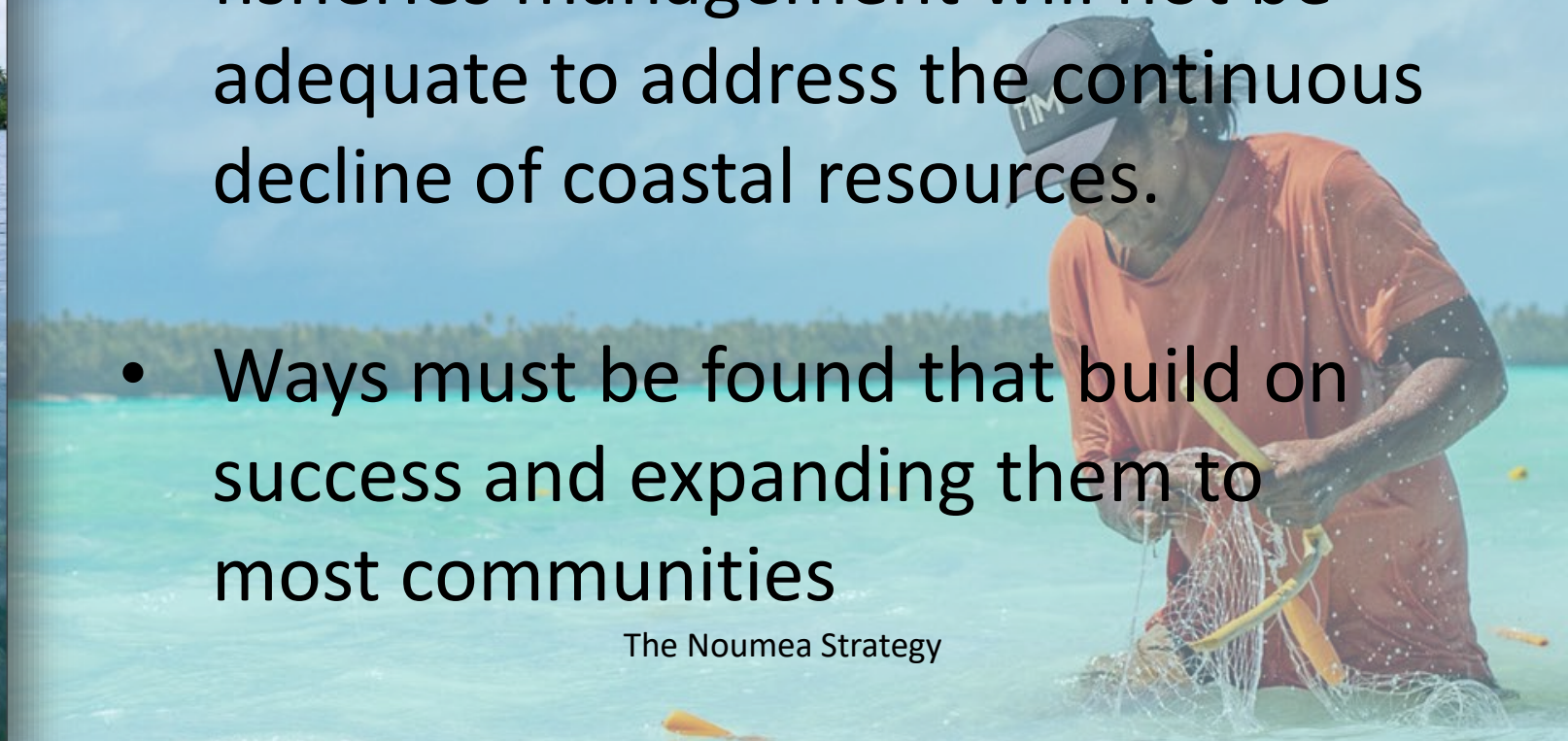
- CBFM Approaches in the Pacific?
- What is scaling of CBFM?
- Status of site-based coverage
- MPAs in CBFM

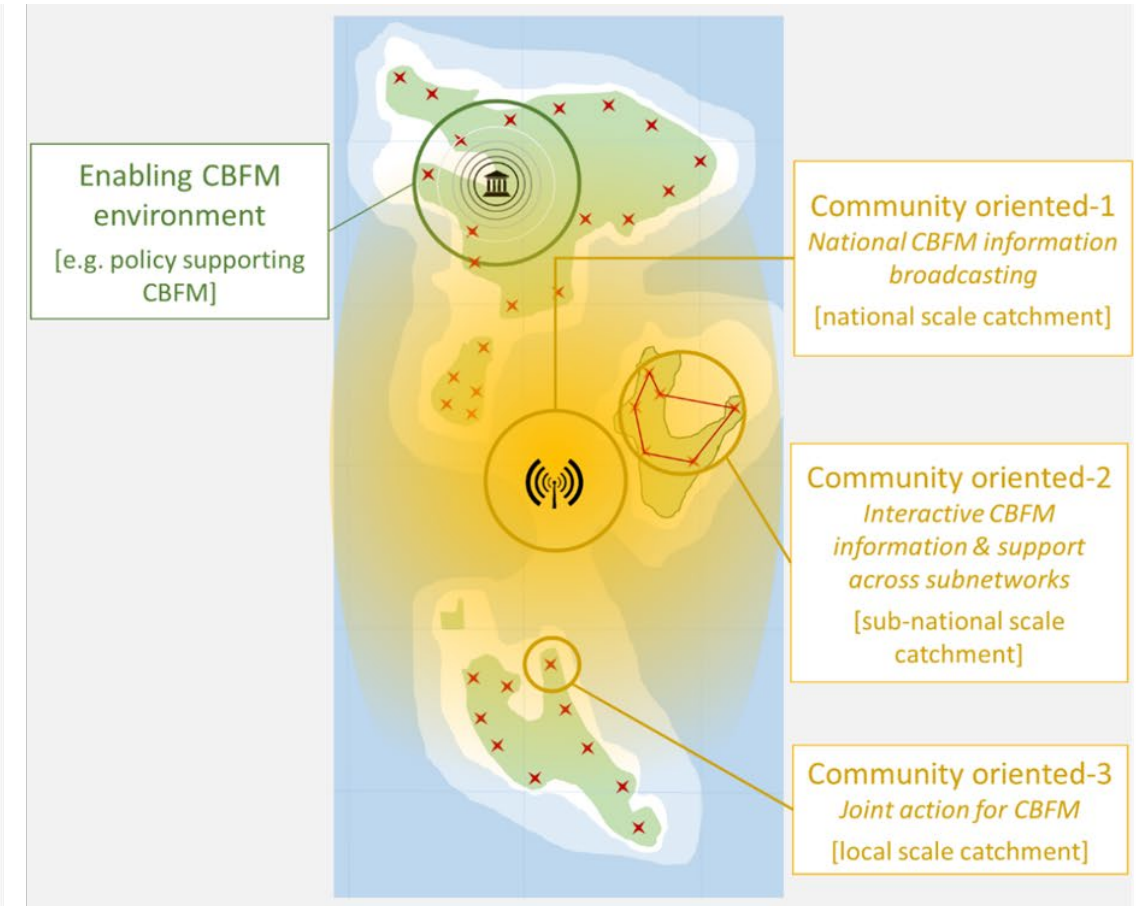
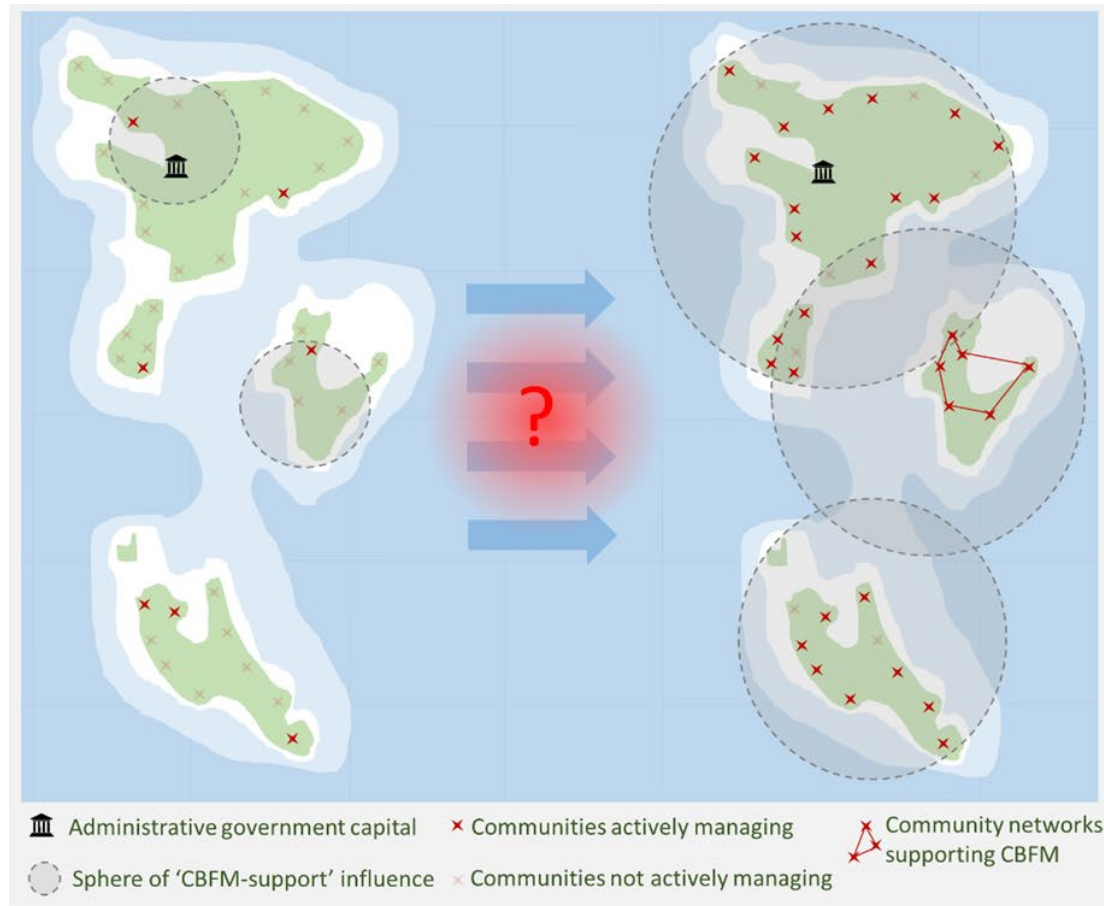


CBFM scaling in the Pacific Context

- Small pockets of effective coastal fisheries management will not be adequate to address the continuous decline of coastal resources.
- Ways must be found that build on success and expanding them to most communities

The Noumea Strategy





Scaling is moving beyond working with a few communities to developing systems that provide adequate support to ALL communities to have healthy fisheries and livelihoods.

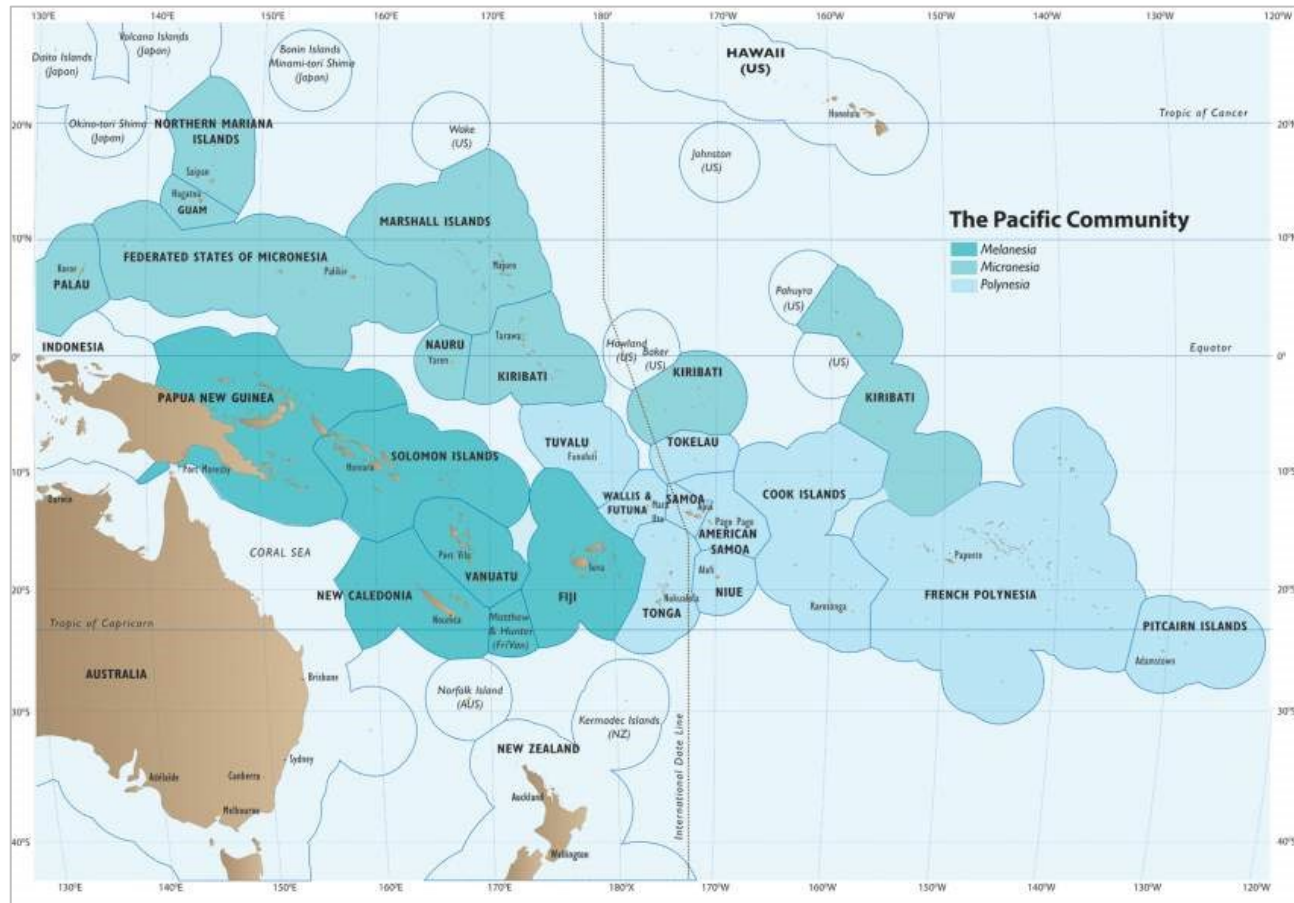


Coverage for site-based approach

- Over 10,000 coastal communities in the region
- 600 documented sites serving 1,000 plus communities
- Covering 10% of the total coastal communities

	Name of model or programme	Number of sites active	Sites in progress	Sites inactive	Communities covered	Total coastal communities	Community unit	Coverage	% in progress
American Samoa	Community based Fisheries Management Program (CFMP)		6	7		74	Villages	0%	8%
Cook Islands	Ra'ui and marine managed areas	23		9	40	41	Districts	98%	98%
Federated States of Micronesia	Marine protected areas (MPAs) and community-based fisheries management (CBFM)	20	4	9	21	75	Municipalities	28%	33%
Fiji Islands NR	Locally-managed marine areas (LMMA)	89			437	850	Villages	51%	51%
French Polynesia	ZPR and rahui	36	5	4	20	116	Communes and commune associée	17%	22%
Guam NR	No co-management					13	Village	0%	0%
Kiribati	Nei Tengarengare CBFM, island and zone approaches	27	40	5	29	184	Villages*	16%	38%
Marshall Islands	Reimaanolok	14	13		14	27	Atolls	52%	100%
Nauru	Community fisheries management areas		3			14	Districts	0%	21%
New Caledonia	Consultative and traditional management					33	Communes	0%	0%
Niue	Community management plans/RMACs		13			14	Communities	0%	93%
Northern Mariana Islands NR	No co-management					12	Villages	0%	0%
Pitcairn Islands	Coastal conservation areas		1			1	Island	0%	100%
Palau	Protected Area Network (PAN) with a marine component (2)	1	3		2	16	States	13%	31%
Papua New Guinea NR	Community, ward or customary plans	32			37	4000	Village	1%	1%
Samoa	Village management/bylaws	111	97	14	123	253	Village	49%	87%
Solomon Islands	Community-based resource management (MFMR and NGOs)	158	unk	121	158	3000	Villages	5%	5%
Timor-Leste	Tara bandu	15		1	16	98	Sucos or districts**	16%	16%
Tokelau NR	Traditional and village rules	3			3	3	Villages	100%	100%
Tonga	Special management areas (SMAs)	59	5		54	111	Village	49%	53%
Tuvalu	Locally-managed marine areas (LMMA)	9			9	9	Councils	100%	100%
Vanuatu	Community-Based Fisheries Management programme	65			65	1400	Communities/settlements	5%	5%
Wallis and Futuna	Marine protected areas (MPAs)		2			36	Village	0%	6%
TOTALS		662	192	170	1028	10,380		10%	12%

Site-based approach – 2 extreme categories



- Countries (Government) has achieved or has potential to achieve site-based management plans in all villages
- Countries which will not achieve significant coverage due to large population and spread-out geographies



Regional Workshop

Tanoa Int. Nadi, Fiji
29 April–3 May 2024



Pacific
Community
Communauté
du Pacifique

MPAs under CBFM Regime

- Almost 700 active CBFM sites include almost all the coastal MPAs countries are reporting for conservation
- Fisheries agencies and local communities are responsible for all these MPAs

	Number of sites active 2022 – this study	WDPA total protected areas with marine component	WDPA marine component and Category V, VI, or collaborative governance
American Samoa	0	15	8
Cook Islands	23	11	8
<i>Fiji Islands NR</i>	89	118	101
Federated States of Micronesia	20	4	0
<i>Guam NR</i>	0	10	0
Kiribati	27	11	0
<i>Marshall Islands</i>	14	16	12
<i>Northern Mariana Islands NR</i>	0	25	4
<i>New Caledonia</i>	0	53	8
<i>Niue</i>	0	2	0
Nauru	0	0	0
<i>Pitcairn Islands</i>	0	2	0
Palau	1	49	10
<i>Papua New Guinea NR</i>	32	18	14
<i>French Polynesia</i>	36	0	7
Samoa	111	47	29
Solomon Islands	158	79	74
Timor-Leste	15	10	8
<i>Tokelau NR</i>	3	3	2
Tonga	59	43	27
Tuvalu	9	18	8
Vanuatu	65	15	3
Wallis and Futuna	0	0	0
TOTALS	661	549	323