

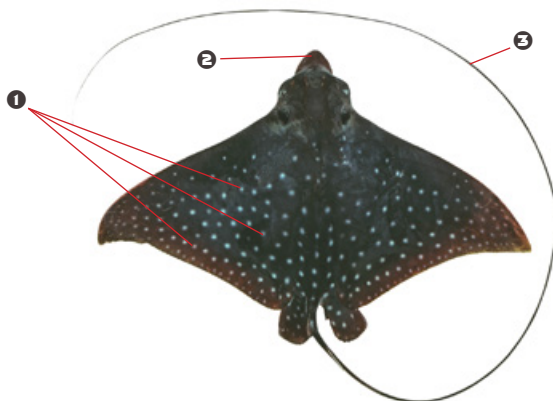
Ocellated eagle ray

Dorsal side dark greenish-grey with ❶ numerous white spots; ventral side pale. ❷ Flattened duckbill-like snout. ❸ Long whip-like tail with venomous spines near base.

Max width: 300 cm DW

AS	CK	FJ	FM	GU	KI
MH	MP	NC	NR	NU	PF
PG	PN	PW	SB	TK	TO
TV	VU	WF	WS		

Photo: CSIRO Australian National Fish Collection



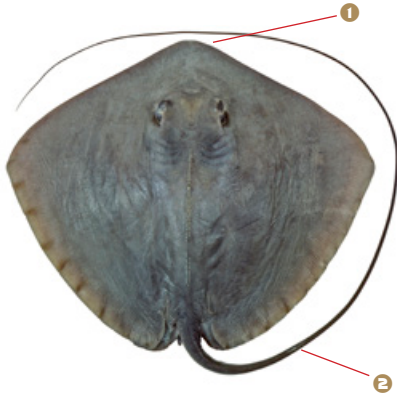
Part of a complex of similar-looking species previously considered globally as *Aetobatus narinari*. *Aetobatus ocellatus* is likely widely distributed in the western and central Pacific, with records of *A. narinari* potentially referring to *A. ocellatus*. More work is needed to confirm its Pacific distribution.



Ocellated eagle ray, *Aetobatus ocellatus*, Honolulu, Hawaii.

Photo: Zachary Bass, Flickr

Pink whipray



Rhomboid-shaped disc. Dorsal side light grey to pinkish-brown.

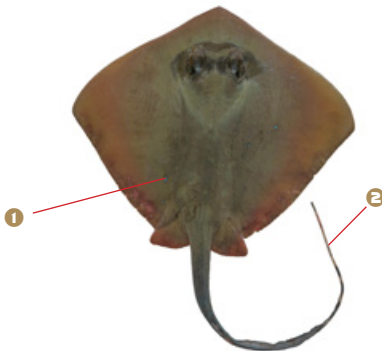
1 Snout bluntly pointed. 2 Tail long and slender, usually with a single venomous spine about two spine lengths from base of tail.

Max width: 185 cm DW

AS	CK	FJ	FM	GU	KI
MH	MP	NC	NR	NU	PF
PG	PN	PW	SB	TK	TO
TV	VU	WF	WS		

Photo: CSIRO Australian National Fish Collection

Blue-spotted stingray



Rhomboid-shaped disc. Dorsal side yellowish- to reddish-brown with

1 scattered dark-edged blue spots of variable size. 2 Tail with alternating white and black bands near end and two venomous spines.

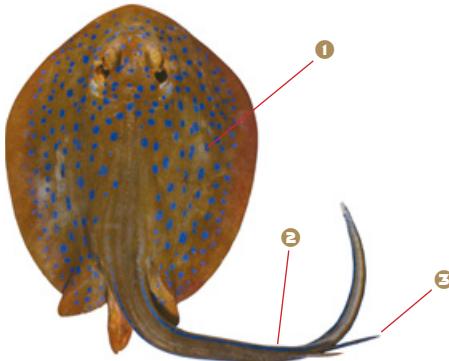
Max width: 47 cm DW

AS	CK	FJ	FM	GU	KI
MH	MP	NC	NR	NU	PF
PG	PN	PW	SB	TK	TO
TV	VU	WF	WS		

Photo: CSIRO Australian National Fish Collection

Part of a complex of similar-looking species that includes *N. australiae* (southern PG and northern Australia) and *N. trigonooides* (east coast of Australia and NC). To date, *N. kuhlii* presence confirmed in SB only; more work is needed to set its Pacific distribution.

Ribbontail stingray



Oval-shaped disc. Dorsal side yellowish-brown with 1 numerous large bright blue spots.

2 Flattened ribbon-like tail with blue stripe down each side and 3 two spines near end.

Max width: 35 cm DW

AS	CK	FJ	FM	GU	KI
MH	MP	NC	NR	NU	PF
PG	PN	PW	SB	TK	TO
TV	VU	WF	WS		

Photo: CSIRO Australian National Fish Collection

Similar to *Taeniura lessoni* (not shown) but with a pair of blue stripes on tail (stripes absent in *T. lessoni*). *Taeniura lessoni* appears restricted to Melanesia.