

HOW CAN YOU MAKE SURE YOUR CATCH IS RECORDED?

KEEP TRACK OF:

- HOW LONG YOU FISH FOR
- HOW MUCH FUEL YOU USE
- WHAT SPECIES YOU HAVE CAUGHT
- THE SIZE OF YOUR CATCH
- THE TYPE OF FISHING YOU UNDERTAKE
- THE GENERAL AREA YOU FISH IN (YOUR EXACT COORDINATES AND FISHING SPOT WILL ALWAYS REMAIN A SECRET)
- ALL FISHING ACTIVITIES (INCLUDING WHEN YOU DON'T CATCH ANY FISH)



SHARE YOUR DATA:

- IF YOU HAVE LOGSHEETS TO FILL OUT, PLEASE COMPLETE THESE AS SOON AS YOU FINISH A FISHING TRIP SO THAT THE INFORMATION IS FRESH IN YOUR MIND. ACCURATE DATA IS BEST.
- WHEN YOU RETURN FROM FISHING, LOOK OUT FOR A FISHERIES OFFICER SO YOU CAN SHARE YOUR INFORMATION. OR PLEASE VISIT US AT AN MMR OFFICE. IT WILL ONLY TAKE A FEW MINUTES.



SHARE YOUR DATA TODAY FOR A BETTER FUTURE TOMORROW

YOUR KNOWLEDGE PRESERVES OUR WAY OF LIFE

When you provide your catch data to the Ministry of Marine Resources, you are helping us to make better, more informed decisions for the future of our fisheries.

Te Kaitiaki Take Kōwhiri
 Ministry of Marine Resources
 P.O. Box 100, Wellington, New Zealand
 www.mmr.govt.nz



HERE'S HOW YOUR DATA HELPS...

YOU:

- Tracks when and where your fishing activities takes place.
- Gains a better understanding of the best times to fish and what species are in season, but also to understand when fishing is not so good.
- Track changes in fishing techniques or methods used over time and how that might affect catch rates.
- Can help you to monitor costs and determine the profitability of your fishing activities.
- Tells you which FADs or fishing techniques are more productive to help make fishing trips more efficient.
- Supports development of business proposals and informs applications for funding and grant opportunities.

THE COMMUNITY:

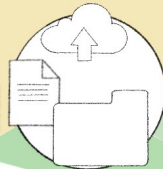
- Contributes to fisheries monitoring efforts to improve scientific research and knowledge about the fishery over time, and improving our understanding of the dynamics of fish stocks, fishery operations, infrastructure, communities and individuals involved in the fisheries sector.
- Helps us to understand the social and economic value and impacts that fishing has on the community and country.
- Help to inform what constraints or challenges fishers might face and how they might be addressed.
- Support the government in monitoring fishery performance and making better decisions for fishers and sustainable fishing practices and policies, and how that might affect different fishers and stakeholders in the fishery.
- Support the development of partnerships between government and fishers on initiatives that support artisanal fishery livelihoods and food security such as development of new products and fisheries.

THE JOURNEY OF YOUR DATA

DATA IS STORED & SAVED

2 Data is uploaded and transmitted to a cloud-based system called 'TUFMANZ'.

EVERY YEAR OVER 340 FISHERS RECORD OVER 42,000 FISH CATCHES.



INSIGHTS ARE FORMED

3 Reports and insights are generated from your data by the data team using a system called 'Dorado'.

THE BEST TIME TO CATCH YELLOWFIN TUNA IS IN MARCH, APRIL AND MAY IN THE NORTH OF THE COOK ISLANDS.



YOU RECORD & SHARE

1 Data is collected by fisheries officers on tablets or by you the fisher on logsheets.

YOUR LOCAL FISHERIES OFFICERS WILL BE ABLE TO TELL YOU WHAT DATA TO COLLECT.



BETTER POLICIES & PLANNING

4 These reports and insights help MMR improve the way policies are created and how these policies are put into practice.

FOR EXAMPLE: YOUR DATA CAN HELP MMR AND THE FAD COMMITTEE DECIDE IF MORE FADs ARE REQUIRED AND WHERE BEST TO DEPLOY THEM.



BETTER FUTURE

6 Better information allows for more informed decisions, which in the long run lead to better management of our fishery for the entire community to enjoy.

CATCH ESTIMATES FOR 2020 WERE OVER 110,000 KG.

BETTER SUPPORTING MECHANISMS

5 Data is also used to inform supporting mechanisms for fishers such as facilitating access to ice and training on fishing techniques and fish handling, and how grants may be provisioned.

DATA PROVISION IS A SELECTION CRITERIA FOR GRANTS.

