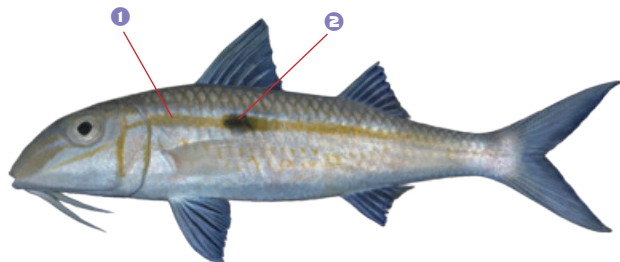


MUV *Mulloidichthys flavolineatus*

Mullidae / Goatfish

Yellowstripe goatfish



Similar to *Mulloidichthys vanicolensis* but with blackish-brown spot on yellow stripe (absent in *M. vanicolensis*).

Silvery-white with a **1** yellow horizontal stripe extending from head to base of caudal fin. **2** Blackish-brown spot in yellow stripe below first dorsal fin.

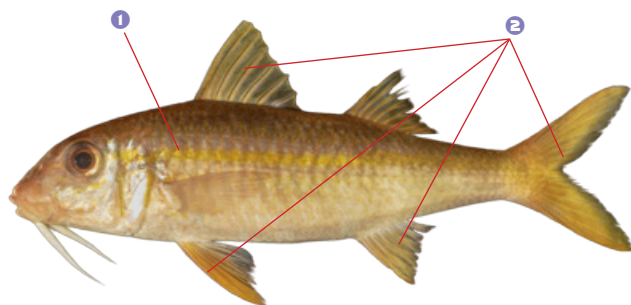
Max length: 40 cm FL

AS	CK	FJ	FM	GU	KI
MH	MP	NC	NR	NU	PF
PG	PN	PW	SB	TK	TO
TV	VU	WF	WS		

YJG *Mulloidichthys vanicolensis*

Mullidae / Goatfish

Yellowfin goatfish



Similar to *Mulloidichthys flavolineatus* but lacks blackish-brown spot on yellow stripe (present in *M. flavolineatus*).

Pink to reddish-orange upper body with white to pink belly.

1 Yellow horizontal stripe extending from eyes to base of caudal fin.
2 Yellow fins.

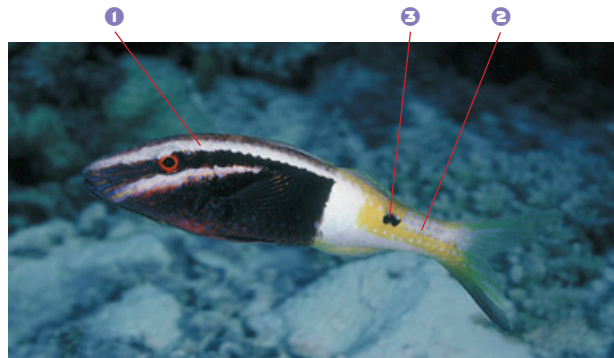
Max length: 35 cm FL

AS	CK	FJ	FM	GU	KI
MH	MP	NC	NR	NU	PF
PG	PN	PW	SB	TK	TO
TV	VU	WF	WS		

RPX *Parupeneus barberinoides*

Mullidae / Goatfish

Bicolor goatfish



Head and forebody reddish-brown with **1** two white bands, **2** rear body white and yellow with **3** dark spot below second dorsal fin.

Max length: 25 cm FL

AS	CK	FJ	FM	GU	KI
MH	MP	NC	NR	NU	PF
PG	PN	PW	SB	TK	TO
TV	VU	WF	WS		

Dash-and-dot goatfish

White to pale grey with **1** reddish-brown to black stripe extending from snout (and running through eyes) to below second dorsal fin. Often yellow or yellowish-grey on back above this stripe. **2** Large black spot at base of caudal fin.

Max length: 50 cm FL

AS	CK	FJ	FM	GU	KI
MH	MP	NC	NR	NU	PF
PG	PN	PW	SB	TK	TO
TV	VU	WF	WS		



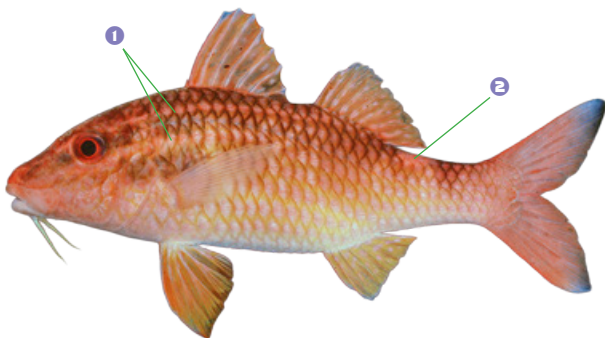
Similar to *Parupeneus macronemus* (not shown) but without black stripe along base of second dorsal fin (present in *P. macronemus*).

Whitesaddle goatfish

Yellowish-green to light red or purple with **1** 2–3 white stripes on head and forebody (faded in this image). **2** Elongated white spot on anterior portion of caudal fin base.

Max length: 35 cm FL

AS	CK	FJ	FM	GU	KI
MH	MP	NC	NR	NU	PF
PG	PN	PW	SB	TK	TO
TV	VU	WF	WS		

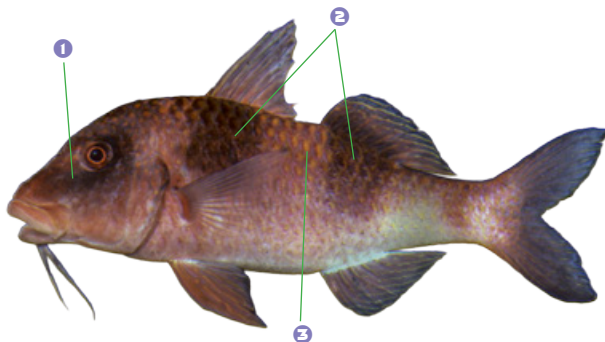


Doublebar goatfish

Grey to bluish-grey or purple, sometime reddish-brown, with a **1** black blotch around eyes and a **2** pair of black vertical bars on body, one below each dorsal fin. **3** Scales with yellow-grey margins or with a yellowish-orange spot.

Max length: 35 cm FL

AS	CK	FJ	FM	GU	KI
MH	MP	NC	NR	NU	PF
PG	PN	PW	SB	TK	TO
TV	VU	WF	WS		



Similar to *Parupeneus insularis* but occurs in the western Pacific (*P. insularis* occurs in the eastern central Pacific).

RPY *Parupeneus cyclostomus*

Mullidae / Goatfish

Gold-saddle goatfish



Highly variable in colour, from tan to purple to bright yellow and in-between. Often with **1** blue line markings around eyes and a **2** yellow saddle behind second dorsal fin.

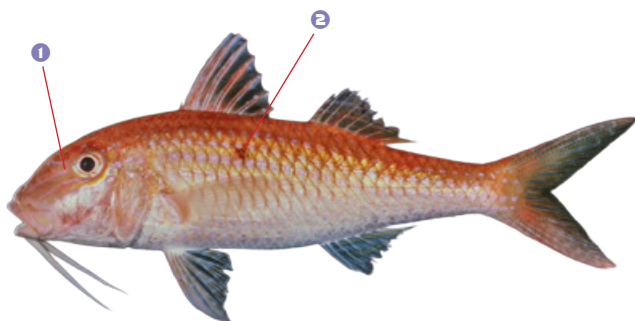
Max length: 45 cm FL

AS	CK	FJ	FM	GU	KI
MH	MP	NC	NR	NU	PF
PG	PN	PW	SB	TK	TO
TV	VU	WF	WS		

RQF *Parupeneus heptacanthus*

Mullidae / Goatfish

Cinnabar goatfish



Yellowish-grey to pinkish-grey upper body fading to pinkish- or bluish-white on belly. **1** Lavender to blue stripes around eyes and on upper sides. **2** Small, reddish-brown spot on sides.

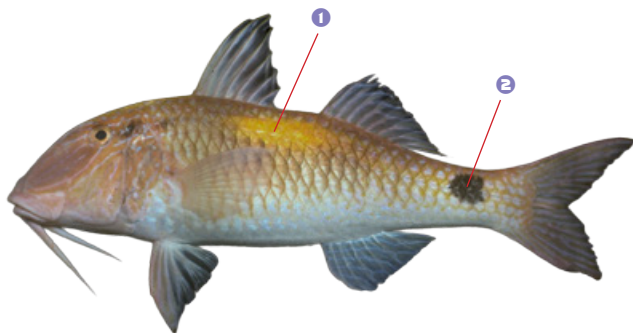
Max length: 35 cm FL

AS	CK	FJ	FM	GU	KI
MH	MP	NC	NR	NU	PF
PG	PN	PW	SB	TK	TO
TV	VU	WF	WS		

RFQ *Parupeneus indicus*

Mullidae / Goatfish

Indian goatfish



Grey or brown to bluish-white with **1** bright yellow patch on body. **2** Large black spot at base of caudal fin.

Max length: 35 cm FL

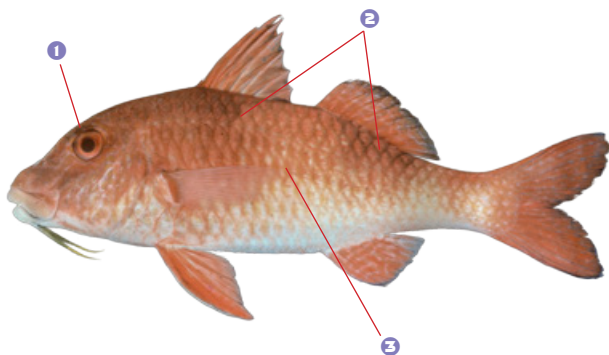
AS	CK	FJ	FM	GU	KI
MH	MP	NC	NR	NU	PF
PG	PN	PW	SB	TK	TO
TV	VU	WF	WS		

Twosaddle goatfish

Grey to bluish-grey or purple, sometime reddish-brown, with a **1** black smudge around eyes and a **2** pair of black bars on body, one below each dorsal fin. **3** Scales with yellowish-grey margin or with a yellowish-orange spot.

Max length: 30 cm FL

AS	CK	FJ	FM	GU	KI
MH	MP	NC	NR	NU	PF
PG	PN	PW	SB	TK	TO
TV	VU	WF	WS		



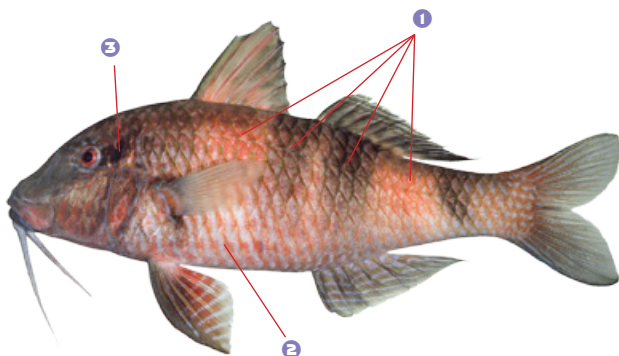
Similar to *Parupeneus crassilabris* but occurs in the eastern central Pacific (*P. crassilabris* occurs in the western Pacific).

Manybar goatfish

Light grey to pinkish-red with **1** alternating reddish-brown and **2** white vertical bars of variable width on sides (faded in this image). **3** Dark horizontal band behind eyes.

Max length: 30 cm FL

AS	CK	FJ	FM	GU	KI
MH	MP	NC	NR	NU	PF
PG	PN	PW	SB	TK	TO
TV	VU	WF	WS		

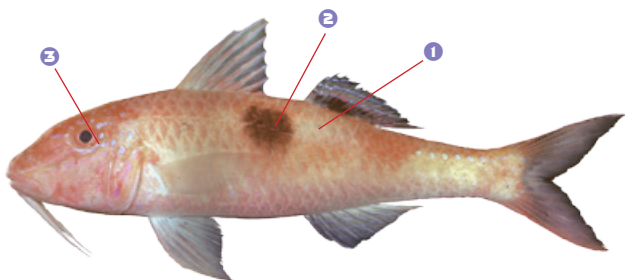


Sidespot goatfish

Pinkish-grey to yellowish-grey. **1** Pale pink to white spot preceded by **2** large dark spot below posterior part of first dorsal fin. **3** Short blue lines radiating from eyes except from below eyes.

Max length: 30 cm FL

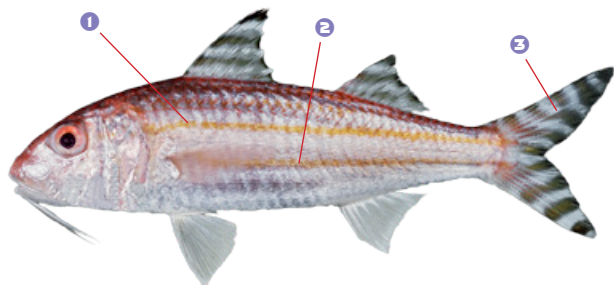
AS	CK	FJ	FM	GU	KI
MH	MP	NC	NR	NU	PF
PG	PN	PW	SB	TK	TO
TV	VU	WF	WS		



GOX *Upeneus taeniopterus*

Mullidae / Goatfish

Finstripe goatfish



Bronze upper body to silvery-white belly, with an **1** orange horizontal stripe extending from eyes to upper base of caudal fin, and **2** a narrower yellow stripe extending from at least the pectoral fins to lower base of caudal fin. **3** Upper lobe of caudal fin has 6–7 reddish-black bars.

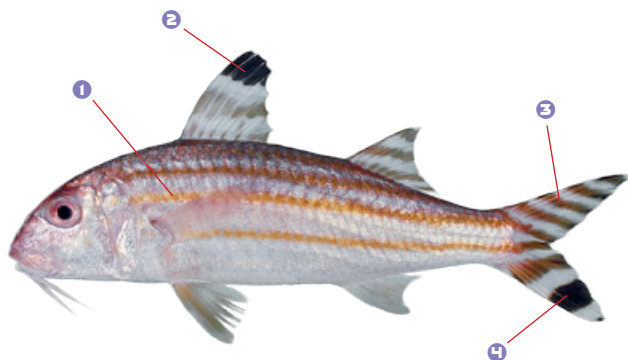
Max length: 30 cm FL

AS	CK	FJ	FM	GU	KI
MH	MP	NC	NR	NU	PF
PG	PN	PW	SB	TK	TO
TV	VU	WF	WS		

UPI *Upeneus vittatus*

Mullidae / Goatfish

Yellowstriped goatfish



Silvery with shades of yellow to green. **1** Four yellowish-brown horizontal stripes on body. **2** First dorsal fin has broad black tip with two narrower yellowish-brown bands underneath. **3** Upper lobe of caudal fin has five dark brown bands, **4** lower lobe has three. Outer band on lower lobe is twice as wide as other bands.

Max length: 30 cm FL

AS	CK	FJ	FM	GU	KI
MH	MP	NC	NR	NU	PF
PG	PN	PW	SB	TK	TO
TV	VU	WF	WS		