

January 2008



TECHNICAL REPORT

Marine Protected Area Faasao o le Gataifale

SAFATA



MANAGEMENT PLAN 2008 - 2010



CRISP



Coral Reef Initiative for the South Pacific
Initiative Corail pour le Pacifique Sud



The CRISP Coordinating Unit (CCU) was integrated into the Secretariat of the Pacific Community in April 2008 to insure maximum coordination and synergy in work relating to coral reef management in the region.



The CRISP programme is implemented as part of the policy developed by the Secretariat of the Pacific Regional Environment Programme for a contribution to conservation and sustainable development of coral reefs in the Pacific.

The Initiative for the Protection and Management of Coral Reefs in the Pacific (CRISP), sponsored by France and prepared by the French Development Agency (AFD) as part of an inter-ministerial project from 2002 onwards, aims to develop a vision for the future of these unique ecosystems and the communities that depend on them and to introduce strategies and projects to conserve their biodiversity, while developing the economic and environmental services that they provide both locally and globally. Also, it is designed as a factor for integration between developed countries (Australia, New Zealand, Japan and USA), French overseas territories and Pacific Island developing countries.

CRISP Coordination Unit (CCU)
Programme Manager: [Eric CLUA](#)
SPC - PO BOX D5
98848 Noumea Cedex
New Caledonia
Tel./Fax: (687) 26 54 71
E-mail: ericc@spc.int
www.crisponline.net

Component 1A: Integrated Coastal Management and Watershed Management

- 1A1: Marine biodiversity conservation planning
- 1A2: Marine Protected Areas
- 1A3: Institutional strengthening and networking
- 1A4: Integrated coastal reef zone and watershed management

Component 2: Development of Coral Ecosystems

- 2A: Knowledge, beneficial use and management of coral ecosystems
- 2B: Reef rehabilitation
- 2C: Development of active marine substances
- 2D: Development of regional data base (ReefBase Pacific)

Component 3: Programme Coordination and Development

- 3A: Capitalisation, value-adding and dissemination of CRISP results
- 3B: Coordination, promotion and development of CRISP programme
- 3C: Support to alternative livelihoods
- 3D: Vulnerability of ecosystems and species
- 3E: Economic task force

COMPONENT 1 - PROJECT 1A2 Support to Marine Protected Areas

MPA Officer: [Pulea E IFOPO](#)
ASMPAs - MNRE
Samoa Government
Level 5 DBS Building
Savalalo
Private Mail Bag
Apia
Tel.: (685) 23800
Fax: (685)25869
Pulea.lfopo@mnre.gov.ws

The objective of this project is to reinforce existing MPAs and to create new ones in order to create a wide panel of pilot sites and experiences that will be used as reference or model for the integrated management of marine resources in the Pacific.

Several sites have been identified and the subsequent actions have been planned : support to Aleipata and Safata Marine Protected Areas in Samoa ; support to operational MPAs in the Solomon Islands and Vanuatu (FSPI) ; identification of new sites in Tuvalu and Kiribati ; identification and implication of local stakeholders in the Mont Panié area (Northern New Caledonia) ; support to GERSA project on coastal and watersheds management in Vanuatu, Fiji and French Polynesia ; pilot studies for the implementation of Marine Areas Management Plan (PGEM) according to the methods developed in French Polynesia.

This CRISP Project is funded by :



Safata MPA Project was originally funded by :



Participants in the Management Plan

The Safata Marine Protected (MPA) Management Plan is a partnership between the Government of Samoa and all the villages of the District of Safata. Both partners have responsibility for the continuous implementation of this Plan which highlights a collaborative approach to the sustainable use and protection of the Marine resources and environment in the District.

The Plan incorporates the Safata District villages all of which are represented by a member in the MPA District Committee.

The villages of Safata confirm the participation of all their villages, at different levels in the implementation of this MPA Management Plan in partnership with the Government of Samoa, through the financial assistance from the Coral Reef Initiative for the South Pacific (CRISP) as well as the implementation of its activities.

| | |
|------------------------------------------------------------------------------------------------------------------------------------------------------------------------------------------------------------------------------------------------------------------------------------------------------------------------------------------------------------------------------------------------------------------------------------------------------------------------------------------------|-----------------------------------------------------------------------------------------------------------------------------------------------------------------------------------------------------------------------------------------------------------------------------------------------------------------------------------------------------------------------------------------------------------------------------------------------------------------------------------------------------------------------------------------------------------------------------------------------------------------------------------------------------------------------------------------------------------------------------------------------------------------------------------------------------------------------------------------------------------------------------------------------------------------------------------------------------------------------------------------------------------------------------------------------------------|
| <p style="text-align: center;">Safata MPA District Committee:</p> <ol style="list-style-type: none"> 1. Saanapu- Mati So'o _____ 2. Sataoa - Letoi Sulusi _____ 3. Lotofaga- Faanana Aitu _____ 4. Nuusuatia-Malaefilifili Sione _____ 5. Vaiee- Saolele Teve _____ 6. Fusi- Mauigoa Tafaima'a _____ 7. Fausaga-Malae Talosia _____ 8. Tafitoala- Pauli Patolo _____ 9. Mulivai- Loia Mino _____ | <p style="text-align: center;">Government Ministries and Corporations:</p> <ul style="list-style-type: none"> ▪ Ministry of Natural Resources & Environment ▪ Ministry of Agriculture & Fisheries ▪ Ministry of Finance ▪ Ministry of Foreign Affairs and Trade ▪ Samoa Tourism Authority ▪ Ministry of Women, Communities & Rural Development ▪ Ministry of Education Sports & Culture <p>The Ministry of Natural Resources & Environment, as the lead Government Ministry on behalf of the participating Government Ministries and Corporations, confirms the participation of the Government of Samoa in the preparation of the Management Plan and its adoption and implementation of its activities.</p> <p>Signed:</p> <p style="text-align: center;">_____</p> <p style="text-align: center;">Tu'u'u Dr. Ieti Taulealo Chief Executive Officer Ministry of Natural Resources & Environment</p> <p>Date: _____</p> |
| <p>The Government of Samoa adopts the Management Plan for the Safata MPA.</p> <p>Signed:</p> <p style="text-align: center;">_____</p> <p style="text-align: center;">Hon: Faumuina Tiatia Liuga Minister of Natural Resources & Environment</p> <p>Date: _____</p> | |

TABLE OF CONTENTS

| | |
|----------------------------------------------------------------|-----------|
| PARTICIPANTS IN THE MANAGEMENT PLAN | 2 |
| 1. VISION | 4 |
| 2. GUIDING PRINCIPLES | 4 |
| 3. SUMMARY OF PRIORITY WORKING GOALS 2008-2010 | 4 |
| 4. BOUNDARIES | 6 |
| 5. PRIORITY 2008-2010 WORKING GOALS: ISSUES AND ACTIONS | 6 |
| 5.1. CHRISTIANITY, FAASAMOA AND CULTURAL HERITAGE | |
| 5.2. FISHERIES AND COASTAL AREAS | |
| 5.3. SPECIAL SAFATA BIODIVERSITY - MANGROVE FORESTS | |
| 5.4. TOURISM | |
| 5.5. AQUACULTURE | |
| 5.6. COASTAL RECLAMATION | |
| 5.7. MARINE EDUCATION IN OUR SCHOOLS | |
| 5.8. AWARENESS AND EDUCATION | |
| 5.9. SAFATA MPA ZONATION PLAN | |
| 6. SAFATA MPA OPERATION | 15 |
| 6.1. INCOME GENERATION AND COST/BENEFIT SHARING | |
| 6.2. SURVEILLANCE AND ENFORCEMENT | |
| 6.3. MPA OPERATION | |
| 6.4. MPA PARTNERSHIPS | |
| 6.5. PENALTIES | |
| 6.6. MONITORING AND REVIEW | |
| 7. ANNEXES | 19 |
| Annex I: Map of Safata MPA | 19 |
| Annex II: No-take zones of Safata MPA | 20 |
| Annex III: Penalty Schedule | 21 |
| Annex IV: User Charges | 23 |
| Annex V: Surveillance and Enforcement Plan | 24 |

SAFATA MARINE PROTECTED AREA

1. VISION

Safata's marine environment is critical to our way of life. We commit to taking care of our marine environment and establishing a solid foundation for our Marine Protected Area, which we hope will both sustain and bring new opportunities for our people and future generations

2. GUIDING PRINCIPLES

- We believe that Christianity, the faasamoa - our way of life and culture - underpins the success of our Safata MPA.
- We take responsibility for making all decisions for our Safata MPA.
- We commit to maintaining the life support systems of our marine environment and to conserve and wisely use the resources they contain.
- We will focus on raising awareness and the education of our people, particularly our children, to support the Safata MPA.
- We will find opportunities to develop businesses that are sustainable, compatible and profitable for our people and our MPA.
- We commit to operating our Safata MPA in a transparent and accountable manner.
- We commit to operating our Safata MPA in a just manner, and to fair and equitable cost and benefit sharing.
- We will build partnerships within and outside Samoa to assist the implementation of Safata MPA Management Plan.
- We believe our Safata MPA Management Plan is a work in progress that will never end. We will agree changes over time to best achieve our vision for Safata's MPA.
- We commit to sharing the experience of the Safata MPA for the betterment of Samoa and its people.

3. SUMMARY OF PRIORITY WORKING GOALS: 2008 -2010

We are establishing the Safata MPA to last forever. This second Management Plan is for 2008 -2010. We will use annual work plans to implement the actions needed well before the end date of 2010. We commit to a regular review of the Plan to ensure that we continue to make the best decisions for our people and the marine environment.

Our Priority Working Goals for 2008-2010 are:

3.1. Christianity, Culture, the Faasamoa and Cooperation: By the end of 2010 we will have Christianity, our culture, the faasamoa and cooperation as the foundation for the operation of the MPA by their constant use in all MPA activities. This will effect local MPA enforcement and will result in increased awareness and respect for our heritage.

3.2. Fisheries and Coastal Areas: By the end of 2010 we will have significantly improved the management of our fisheries and coastal areas through measurable observance of village rules and by laws together with support from our key Government partner Ministry of Natural Resources & Environment and along with the Ministry of Agriculture and Fisheries.

3.3. Special Biodiversity-Mangrove Forests of Safata: By the end of 2010 our mangrove areas remains in the same quality, will not have decreased in area due to any human activities, and will be a useful tourism resource.

3.4. Tourism: By the end of 2010 at least 3 viable tourism activities will be established associated with the MPA. All people visiting our Safata MPA will know when they enter and leave it and know of its basis. Our heritage sites will be documented and together with their conservation be used to promote, in a culturally acceptable manner, the Safata tourism experience.

3.5. Aquaculture and Reef re-stocking: By the end of 2010 we will have followed up on the recommendations of the Aquaculture review by undertaking with our partners detailed feasibility assessments (social, economic, environmental) and based on favourable review have trialled and evaluated aquaculture/restocking initiatives for at least 3 of the recommended species.

3.6. Marine Education in our Schools: By the end of 2010 every child who goes to school in the Safata District will know about our Safata MPA and its work and will have had the opportunity to participate in targeted education initiatives as part of their education programme. In partnership with district schools we have developed and implemented a MPA education programme for primary and secondary school children which is relevant to their curriculum.

3.7. Awareness and Education: By the end of 2010 all people living in the Safata District will be aware of our MPA and its work. We will have developed and begun implementation of a village-based MPA awareness and education programme. We will have developed targeted information and ways to reach key individuals and agencies within and outside Samoa. All people will know when they enter and leave our Safata MPA.

3.8. MPA Zonation: By the end of 2010 we will have developed and implemented a zonation plan for our MPA which builds on our fisheries reserves to develop no-take zones that optimise fisheries resources and tourism development and that assist conservation of our marine natural heritage.

4. BOUNDARIES

Our Safata MPA consists of all the following nine participating villages of Mulivai, Tafitoala, Fausaga, Fusi, Vaiee, Nuusuatia, Lotofaga, Sataoa and Saanapu. The boundaries of the Safata Marine Protected Area extend from Le Niu at Saanapu in the West and ends at Ava o le Fua at Mulivai in the East. It extends from the high water mark to one mile from the reef drop-off and includes the Aau Gasese submerged reef.

5. PRIORITY WORKING GOALS 2008-2010: ISSUES AND ACTIONS

We are establishing our Safata MPA to last for a long time. This second Management Plan is for 2008-2010. We commit to regular review of the Plan to ensure that we continue to make the best decisions for our people and marine environment.

5.1. CHRISTIANITY, FAASAMOA AND CULTURAL HERITAGE

GOAL:

By the end of 2010 we will have Christianity and the faasamoa as the foundation for the operation of the MPA by their constant use in all MPA activities. This will effect local MPA enforcement and will result in increased awareness and respect for our heritage

ISSUES:

The Samoan way of life -Christianity and the faasamoa - and the associated strength of our culture is the foundation on which the success of the Safata MPA rests. Like many cultures, pressures of modern life are impacting on the ways we do things and affecting values of our children. It is our responsibility to conserve and strengthen our Samoan culture as a key part of implementing our Safata MPA. Traditionally based management and clear responsibilities at family, village and district levels with complementary actions by Government is likely to be the best formula for success for Safata's MPA's management.

ACTIONS:

Our Safata MPA will:

- ❖ Respect Christian principles, cultural protocols and enhance the teaching and practice of the Samoan culture within all activities of the MPA,
- ❖ Carefully document and conserve cultural protocols, heritage sites and their traditional stories, and
- ❖ Develop traditional rules, village bylaws, fines and punishments consistent with Christian principles and the faasamoa to enforce the rules outlined in our Plan.

5.2. FISHERIES AND COASTAL AREAS

GOAL:

By the end of 2010 we will have significantly improved the management of our fisheries and coastal areas through the observance of our agreed rules together with support from our Government partners (Ministry of Natural Resources & Environment and Fisheries Division).

ISSUES:

Coastal fisheries have seriously declined in living memory of our people. Significant reductions in large breeding fish, small fish and shellfish have occurred. In addition the degradation of important marine habitats, especially mangrove areas and beaches that have been mined for sand, has also been observed. These declines in the quality and quantity of marine resources are adversely impacting our way of life.

We recognise that the fisheries problems are largely caused by destructive and unsustainable fishing practices, like dynamiting, coral pounding (faamoa or tuiga), poisonous chemicals (chlorox, gramoxone, barringtonia seeds, ava niukini), small mesh fishing nets, commercial SCUBA fishing and fish traps. Unsustainable commercial sand mining has also contributed to severe erosion in our coastal areas in recent years.

Disasters such as flooding and hurricanes, coral bleaching and disease, impacts of climate change, and possibly the introduction of tilapia have also all impacted on our coastal marine environment.

We are now seeing cumulative effects of these human and natural impacts to our marine environment. These contribute to outbreaks of crown-of-thorns starfish, coastal erosion, and high urchin populations that are eroding vulnerable recovering reef areas.

We know there is a growing list of increasingly rare species in Safata, largely caused by over harvest of certain species. These now warrant special protection, including carefully designed no-take zones, to give them time to recover their populations so that decisions on future use can take place.

We know our coastal marine environment is of limited area and as such will support limited marine resources. It is important that the marine resources support subsistence needs and allow for some commercial use by our people. It cannot support commercial or subsistence use for those who are not from our District. Use of Safata's marine resources by these outsiders will be prohibited.

ACTIONS:

We believe that strong traditional village and district laws combined with strengthening government by-laws (village and potentially district level) are needed urgently to effectively end the use of all destructive and unsustainable fishing methods and to more wisely use our coastal resources.

Our Safata MPA:

- ❖ Bans the use for fishing of:
 - dynamite
 - ava niu kini
 - chlorox
 - gramoxone (paraquat)
 - cyanide
 - coral pounding
 - barringtonia seeds
 - SCUBA
 - fish poisons

- fish traps
 - fish nets with mesh size smaller than 2.5 inches
 - cast nets with mesh size smaller than 2.5 inches
 - and any other poison or noxious substance that will have negative impact on the environment.
- ❖ Prohibits any further introduction of tilapia and the introduction of any other new species until full environmental and social impact assessments are carried out.
 - ❖ Bans the harvest of turtles and their eggs until these species show measurable recovery. The keeping of turtles in ponds for tourism is also prohibited.
 - ❖ Bans
 - Harming, killing or any other activity that may affect whales and dolphins in the Safata MPA;
 - Whale or dolphin watching operations without a written consent of the Safata District MPA Committee;
 - The taking for use or disposal of the carcass of any dead whale or dolphin in Safata's marine environment without first informing the Committee and the Ministry of Natural Resources and Environment.
 - ❖ Will prioritise no-take zones to help ensure recovery of important seafood species including fish and other marine resources as part of MPA zonation goals.
 - ❖ Will actively:
 - control crown of thorns starfish to prevent outbreaks,
 - encourage harvest of sea urchins in critical areas,
 - instruct our people to turn back boulders after gleaning for seafood,
 - encourage our people to respect our fisheries laws, and
 - other measures as needs and resources allow.
 - ❖ Supports the wise use of its marine resources by its people. It prohibits the use of these resources by all others, unless through a written agreement with the village involved and endorsed by the Safata MPA District Committee.
 - ❖ Bans commercial sand mining.
 - ❖ Will continue to work with the MNRE, Attorney General Office, Fisheries Division, and other relevant agencies to strengthen by-laws (village and potentially district level) to reflect the above decisions.
 - ❖ Will continue to implement a local enforcement and surveillance programme to support the above activities.

The schedule of penalties for the Safata District is in Annex III.

5.3. SPECIAL SAFATA BIODIVERSITY - MANGROVE FORESTS

GOAL:

By the end of 2010 our mangrove areas will have improved in quality, will not have decreased in area due to any human activities and will be a useful tourism and academic resource.

ISSUES:

Our Safata MPA contains a special range of biodiversity, most significantly one of the largest areas of mangrove forest left in Samoa. Mangrove forests have suffered in recent times due largely to clearance, reclamation, pollution and poor management e.g damage by pigs, rubbish dumping, clearance and reclamation.

ACTIONS:

Our Safata MPA

- ❖ Supports mangrove conservation by:
 - Banning clearance and reclamation without proper assessment and village approval,
 - Preventing pigs from going wild.
 - Banning of rubbish dumping in mangrove areas and the marine environment.
 - Developing mangrove-based tourism.
 - Conducting environmental impact assessment for any mangrove-based development activity.

5.4. TOURISM

GOAL:

By the end of 2010 at least 3 viable tourism activities will be established associated with the MPA. All people visiting our Safata MPA will know when they enter and leave it and know of its basis. Our heritage sites will be documented and together with their conservation be used to promote, in a culturally acceptable manner, the Safata tourism experience.

ISSUES:

Tourism is seen both as an opportunity and a threat to the Safata MPA. MPA based tourism (e.g mangrove tours, kayaking, surfing, snorkelling, diving) and associated services such as accommodation, handicrafts, transport etc could be an important way of providing employment and generating income in the Districts. In particular a niche market could be developed in the form of study tourism with overseas students/universities and our MPA. Threats from tourism include undesirable impacts on our culture and way of life. It is important that tourism development benefit individuals, families, villages, and the District through supporting the MPA operation.

We believe that successful tourism development will most likely rely on developing partnerships with tour operators and accommodation providers and this will be encouraged.

ACTIONS:

Our Safata MPA will:

- ❖ Promote the customs and culture of Samoa in all tourism activities, including information for tourism safety and conduct,

- ❖ Implement MPA signage and associated information designed for tourism audiences,
- ❖ Document, conserve and maintain heritage sites and promote the culture through site visits,
- ❖ Investigate and develop tourism associated with the MPA,
- ❖ Develop mutually beneficial partnerships with tour operators to promote the Safata MPA and develop tourism activities that support local employment and generate income for the people of Safata and the MPA's operation, and
- ❖ Agree on an MPA District levy for all visitors to the MPA:
 - of \$5.00 per person per visit to the MPA,
 - of \$20.00 to launch any boat from anywhere in the MPA,
 - of \$5.00 to use the MPA District Centre facilities per person per day and \$10 per person overnight stay,
 - other basic charges as given in Annex IV and
 - reserve the right for additional charges relevant to the activity being undertaken and negotiated on a case by case basis.

5.5. AQUACULTURE

GOAL:

By the end of 2010 we will have followed up on the recommendations of the AusAID Aquaculture review by undertaking with our partners detailed feasibility assessments (social, economic, environmental) and based on favourable review have trialled and evaluated aquaculture/restocking initiatives for at least 3 of the recommended species.

ISSUES:

We have had some experience with aquaculture in our District and are grateful for AusAID's assistance to provide a review of aquaculture feasibility.

The AusAID report concluded:

- that previous attempts to develop community based aquaculture programmes within the Safata District in general have not been successful and required substantial financial assistance to continue a basic initiative,
- the prospect of large-scale commercial aquaculture development within Safata is not an economic or environmental prospect, and
- any future aquaculture development should have suitable management plans and regulation and that Committee endorsement and enforcement is critical to the long term success of any programme.

The AusAID report has usefully collated information on aquaculture and reef restocking species relevant to the environment parameters existing within Safata. It recommended that there is the potential at the community level to cultivate marine and estuarine organisms for restocking, subsistence and commercial activities. The first four highest commercial species for Safata were; the Pacific rock oyster,

mangrove crab, giant clams and hard coral. Others included gastropod snails like trochus, also finfish like mullet and milkfish.

We are both optimistic and cautious about aquaculture development in our District, particularly of non-native species e.g Pacific Rock Oyster. Our caution lies in ensuring economic viability of any venture and we believe that the AusAID report is a necessary first step but further more detailed work needs to be urgently done to be confident in moving forward on any one initiative.

We are very positive about participation in reef stocking programmes for clams, trochus and possibly other species, and have learnt many lessons from our recent experience. We are also positive to promote the raising of mangrove crabs believing this a potentially useful way to add value to a commercial activity already present in our District.

Finally, we are conscious of the need to effect partnerships with Fisheries Division and with the private sector to ensure the success of aquaculture and reef stocking initiatives.

ACTIONS:

Our Safata MPA will:

- ❖ Support the development of community-based aquaculture/reef re-stocking initiatives by ensuring that such initiatives will be based on a full feasibility assessment followed by a venture plan that takes into account economic viability and social and environmental impacts.
- ❖ Seek professional technical assistance, marketing and managerial skills and be responsible for a community awareness programme for any initiatives. We know that support from the DEC/MNRE, Fisheries Division and partnerships with the private sector will be key to the success of any aquaculture project.

5.6. COASTAL RECLAMATION

GOAL:

By the end of 2010 we will have improved/maintained the status of our coastlines by careful and more rigorous management of development and activities, such as reclamation, in partnership with the Government (Ministry of Natural Resources and Environment).

ISSUES:

We are conscious of the fact that unmanaged development in the coastal areas can create more problems than benefits. We are also aware of the fact that the absence or poor assessment and planning for reclamations can result in increased coastal erosion, smothering or burial of corals and important habitats for marine animals, direct ecosystem degradation and damages leading to loss and ecological environment changes that result in degraded or disappearance of marine life. We are also mindful of the fragile nature of the coastal environment and the constant pressures it always faces particularly during natural phenomenon such as cyclones.

We recognize that development in the coastal area can worsen the impacts of natural events and disasters and render the coastal ecosystem less effective to withstand their impacts and reduce the ability of the system to recover fast.

While we are aware of the potential economic benefits of some developments requiring undertakings such as reclamations, it is our belief that these benefits are often limited in distribution, thus only a small percentage of the district population will profit. We strongly feel that the benefits of the conservation of the natural environment will always be more widespread and thus benefiting the majority, if not all, of the district by having a continuous and lasting source of food (protein) and income.

We know that the Constitution of Samoa stipulates that all lands lying below the line of high-water mark is State land and that under the Lands, Surveys and Environment Act 1989, MNRE is responsible for the protection of the foreshore and coastal waters including approvals for reclamation.

We believe that there is an immense opportunity to establish and foster a working collaboration between our MPA and the Government, through the Ministry of Natural Resources and Environment, to protect the foreshore.

ACTIONS:

Our Safata MPA will:

- ❖ Develop and implement awareness programs on foreshore and coastal protection and their value, targeting different sectors within the district .
- ❖ Develop our surveillance and enforcement programme that is consistent with the cultural protocols in the district villages.
- ❖ Endeavour to discourage further reclamation on the foreshore and coastal areas of the district.
- ❖ Develop closer working relation, including consultations, with the relevant Divisions within MNRE such as Land Management, PUMA and DEC concerning reclamations in the district.
- ❖ Develop closer working relation with the Government of Samoa to make enforcement and surveillance programme effective by ensuring that no further reclamation in the MPA coastal areas will be carried out unless full Environmental and Social Impact Assessments are conducted first and results considered favourable by the village and the Safata MPA through the District Committee.

5.7. MARINE EDUCATION IN OUR SCHOOLS

GOAL:

By the end of 2010 every child who goes to school in the Safata District will know about the Safata MPA and its work and will have had the opportunity to participate in at least 3 targeted education initiatives as part of their education programme. In partnership with district schools we will have developed and

implemented a MPA education programme for primary and secondary school children that is relevant to their curriculum.

ISSUES:

We know that education is a key to the success not only of our MPA but also for our children's future. Unfortunately an appreciation for, and understanding of, the importance of the marine environment to our way of life and the ecological and biological cycles which keep the marine environment functioning are commonly not taught in schools due to the lack of resources and specialised personnel.

We believe that there is a tremendous opportunity to make working links between our MPA and District Schools. By reaching our children we also hope to reach other youth and adults in the District to better understanding of our MPA and to create opportunities for active involvement.

ACTIONS:

Our Safata MPA will:

- ❖ Develop, trial, evaluate and fully implement a curriculum-based marine education programme for our primary schools, linked to the work of our MPA.
- ❖ Develop, trial, evaluate and fully implement a curriculum-based marine education programme for our secondary school, linked to the work of our MPA.
- ❖ Work together with the Peace Corp Office to implement this education program.

5.8. AWARENESS AND EDUCATION

GOAL:

By the end of 2010 all people living in the Safata District will be aware of the MPA and its work. We will have developed and begun implementation of a village-based MPA awareness and education programme. We will have developed targeted information and ways to reach key individuals and agencies within and outside Samoa. All people will know when they enter and leave the Safata MPA.

ISSUES:

Safata people need to have every opportunity to participate fully in the development of their Safata MPA. Despite current efforts it is a fair assumption that not all the people in Safata are fully aware of our MPA and its work. We need to focus on building awareness, understanding and support for our Safata MPA.

We know that activities by people from outside Safata e.g non-Safata fisherman are adding to the pressures on our marine environment. Equally others from outside the District could be potential partners for our work e.g tourism operators. We need to ensure that all of Samoa is aware of our Safata MPA and its work.

We believe there is a need to build partnerships outside of Samoa for support of our MPA which means that we also need to build awareness, understanding and support with key individuals and agencies within and outside Samoa.

We understand that education and awareness is a two-way process and we stand as much to learn from these activities as we will teach.

ACTIONS:

Our Safata MPA will:

- ❖ Initiate an awareness programme for our Safata MPA targeting the following:
 - Building awareness of our MPA in the community, include all the social sector; chiefs and orators, able body men (aumaga), women, youth and children.
 - Building awareness on the national level with government departments and agencies, and NGOs.
 - Promotion of awareness with MPA partners, JICA, CRISP, SPREP, IUCN, World Bank and others.

5.9. SAFATA MPA ZONATION

GOAL:

By the end of 2010 we will have developed and implemented a zonation plan for our MPA which builds on our fisheries reserves to develop no-take zones that optimise fisheries resources and tourism development and that assist conservation of our marine natural heritage.

ISSUES:

Zonation is not a new concept for most of our people but it may become a sensitive issue given the problems associated with overfishing and the decrease in fish catch. An understanding between the project team and community should be established during the whole process of formulating the Management Plan. The recent marine biodiversity assessment survey results identified critical areas in terms of crown-of-thorns infestation, bioerosion due to sea urchins, and areas most affected by destructive fishing practices like ava niu kini and dynamiting. Information was also collected on spawning sites, aggregation sites, recruitment areas and areas suitable for tourist activities like snorkelling, kayaking and other water sports.

Due to the high impact of recent natural disasters, like cyclones coral bleaching, and the impacts of human uses, large areas of the Safata coral reefs ecosystems are still slowly recovering. Unsustainable harvesting of marine resources has affected certain species levels and it will take years for them to recover.

The daily sustenance of our people on marine resources is our way of life and livelihood. We are aware that zoning is a big issue because it will mean there will be areas that we will not be able to access for fishing. The challenge to us is how to maintain a balanced view and fairly select a zoning system that will benefit the recovery of marine resources most affected and at the same time meet our needs.

Finally, we know that boundaries of no take zones need to be simple and easily recognised as a key factor for success.

ACTIONS

Our Safata MPA will:

- ❖ Continue to follow the zonation process targeting the following:
 - Develop and agree potential no take zones and their goals (fisheries, tourism, conservation, combination) based on results of our marine biodiversity survey, goals of our management plan and using a fair and equitable system of distribution, and
 - Develop and implement a consultative process within our villages as part of the awareness programme to build awareness, understanding and support for MPA zonation. Importantly we agreed with our people's views on proposed boundaries and review all input before zonation was implemented.

6. SAFATA MPA OPERATION

6.1. INCOME GENERATION AND COST/BENEFIT SHARING

Our Safata MPA will need to generate income both to support the ongoing operational costs of the MPA and also to achieve a key part of our vision for this MPA to bring new opportunities for our people and to sustain our way of life.

Our Safata MPA will:

- ❖ Help individuals, families, villages and the district to develop strategies for businesses and income generation that are sustainable, compatible and profitable.
- ❖ Develop and implement ways to sustain the ongoing costs of the MPA through profitable use of the Safata MPA District Centre, study exchanges, penalty fines, tour operator levies and other means to increase the financial foundation for the MPA,
- ❖ Encourage partnerships within and outside Samoa to support the MPA and its work,
- ❖ Develop and implement a Trust Fund to ensure the long term viability of the Safata MPA, and
- ❖ Ensure that costs and benefits from the MPA are fairly distributed amongst individuals, families, villages and the district

6.2. SURVEILLANCE AND ENFORCEMENT

There are many aspects of our Safata MPA and associated Management Plan that will require enforcement and surveillance. Most particularly ensuring that the fisheries and coastal rules articulated above are fully respected by people both within and outside of Safata District. We recognise that people can only respect the MPA if they are fully aware of its provisions and to that end the Awareness Programme is key to the success of a surveillance and enforcement initiative.

We know that through the faasamoa the most successful surveillance and enforcement programme needs to be led by the family, village and district traditional management systems. This needs to be complemented by government support and actions, particularly through the by law system to ensure that all respect the rules of our Safata MPA.

Our Safata MPA will:

- ❖ Develop a local surveillance and enforcement programme that is consistent with our cultural protocols and is based on participation from all social sectors of our communities, and
- ❖ Work with the Government of Samoa to add value to our local enforcement and surveillance programme by ensuring that outsiders know of and respect the rules for the MPA.

6.3. MPA OPERATION

The following groups are approved by the District to assist in the implementation of the project from time to time.

❖ **Safata MPA District Committee:**

The District Committee (DC) is the executive decision making body of the MPA and is composed of nine highly respected chiefs one from each village of the district. They are:

- | | |
|----------------|---------------------|
| ▪ Saanapu -- | Mati So'o |
| ▪ Sataoa -- | Letoi Sulusi |
| ▪ Lotofaga -- | Faanana Aitu Ama |
| ▪ Nuusuatia -- | Malaefilifili Ioane |
| ▪ Vaiee -- | Saolele Teve |
| ▪ Fusi -- | Mauigoa Tafaimaa |
| ▪ Fausaga -- | Malae Talosia |
| ▪ Tafitoala -- | Pauli P. Afoa |
| ▪ Mulivai -- | Loia M. Toalepialii |

❖ **Safata District MPA Officer:**

The District Officer (Pulea E Ifopo) recruited under the recommendation of the District Committee is the MPA personnel on site responsible for the smooth running of the District Centre, project equipment, advice to the District Committee on MPA issues and organize meetings and other duties as required.

We know there is a need for additional staff of the Safata MPA to ensure the smooth running and the thorough implementation of the Management Plan.

❖ **Safata District MPA Caretaker:**

The caretaker is to be responsible for the safety and maintenance of the MPA Centre and equipments under the care of the District Committee though the District Officer and the representative of Lotofaga village in the Committee (Faanana A Ama).

❖ **The Project Team:**

The overall coordination of the Safata MPA Project is now with the Ministry of Natural Resources and Environment. The Team includes the Principal Marine Conservation

Officer and Project Manager (Malama Momoemausu), Senior Marine Conservation Officer (Juney Ward) and two Marine Conservation Officers (Isamaeli Asotasi and Lilian Penaia). These assist the District Officer in implementing the Safata MPA activities..

❖ **Village Working Committees:**

Each village in the MPA has selected its Village Working Committee, These Committees each have five representatives from their villages who generally are the leaders of the different social sectors (able bodied men, women, village and the council of chiefs) in each village.

❖ **Volunteers from the village:**

Volunteers are selected from the villages from time to time to assist with certain work activities e.g monitoring. Volunteers are trained to assist with the marine biodiversity assessment.

6.4. MPA PARTNERSHIPS

❖ **Government of Samoa:** The Safata MPA Project is now under the full coordination and operation of the Government of Samoa through the Ministry of Natural Resources and Environment (MNRE) however it still promotes partnership with the Fisheries Division and Samoa Tourism Authority. The Memorandum of Understanding prepared under the Samoa Marine Biodiversity Protection Management Project highlights the roles and responsibilities of the Samoa Government agencies involved.

- **MNRE/DEC:** The primary role of the MNRE/DEC is the Government focal point and for requirements of office accommodation and administration assistance. We believe that they have a key on going role to provide technical advice, help secure additional resources and be a supporting agency for our MPA.
- **Samoa Tourism Authority:** STA is a critical link to assist us in developing profitable and sustainable tourism in the MPA. With STA supportive of the MPA it provides an important link to the tourism private sector and source of advice on tourism development.
- **Fisheries Division:** We believe that the Fisheries Division has a key role to play in assisting implementation of our fisheries and coastal rules especially through the by law programme which we hope will extend to function at not just village but District level and thus provide a unifying force for effective enforcement of our rules. Fisheries Division is also a key for the development of our aquaculture and restocking programme and like MNRE are important for technical backstopping and ongoing advice for the MPA.
- **Others:** We believe that the Attorney General's Office, Ministry of Works, Transport and Infrastructure, Police, infrastructure providers (Electricity Power Corporation, Samoa Communications) and other Government agencies have a key role to play in supporting our MPA. Furthermore we recognise that we do not separate land from the sea and land based

activities e.g waste management are important to our MPA and we need to work with any and all agencies, including non-government agencies to effectively implement our Safata MPA.

❖ **IUCN:** The IUCN was the executing agency for the Samoa Marine Biodiversity Project. IUCN had been a key mover and shaker in helping us develop our MPA. We request that IUCN consider its ongoing role in our MPA even after the conclusion of the project.

❖ **World Bank/GEF:** The World Bank was the implementing agency with funding from the Global Environment Facility. We request that World Bank consider its ongoing role in the MPA even after the conclusion of the project

❖ **Other Partners: CRISP/CI/SPREP/JICA etc:** CRISP is currently funding our Project alongside assistance from CI. SPREP, Peace Corps and Japanese international Cooperation Agency have also assisted our MPA Project. Developing these and other partnerships for Safata's MPA will be a high priority for us to invest in.

6.5. PENALTIES

People and agencies, from within and outside the District, that break the rules of the MPA as agreed by the District will be penalised. **A penalty schedule for violation of MPA rules is given in Annexes.** The severity of the penalties reflects the customary fines that are currently practiced by villages' councils in the district when village rules and laws are violated.

The Village Bylaws that have been approved by the government include these penalties that are implemented and enforced in the Safata MPA. The Bylaws also apply to those from outside of the Safata MPA who may violate these laws.

Customary fines are either by sows, box of tin fish and/or taro. The monetary value of a sow is ~\$100.00. The more severe the penalty the higher the number of sows or boxes of herring and so on. All villages in the Safata District have set of rules and penalties, which have been reviewed and reflect a degree of fairness to the violators. There is a set of penalties for outsiders that violate these village rules. Outsiders here are classified as people that are not serving their family chiefs in the District i.e "monotaga".

It is recognised that the assistance of the Police and the Attorney General's office will be required especially for enforcement of rules by outsiders. Fines generated by such need to be invested back into the MPA to cover costs of operation.

6.6. MONITORING AND REVIEW

We consider our Safata MPA Management Plan to be a work that is constantly in progress. We are creating an MPA that will outlive the current project or indeed any future project as an MPA that will stand forever in our District and Samoa. We know that circumstances will change, new threats will arise and some current issues will be resolved successfully.

Our Safata MPA Management Plan will be used to develop annual work programmes by the District Committee. These will have measurable outputs for each activity. Progress on the Plan and work programmes will be reviewed at least annually and revised accordingly as part of this work programme.

We will commit with our partners to develop tools for assisting this review including, community-based biodiversity monitoring, socio-economic monitoring and at least yearly scientifically-based assessments of the marine environment to assist us with our decision making.

7. ANNEXES

Annex I: Map of Safata MPA

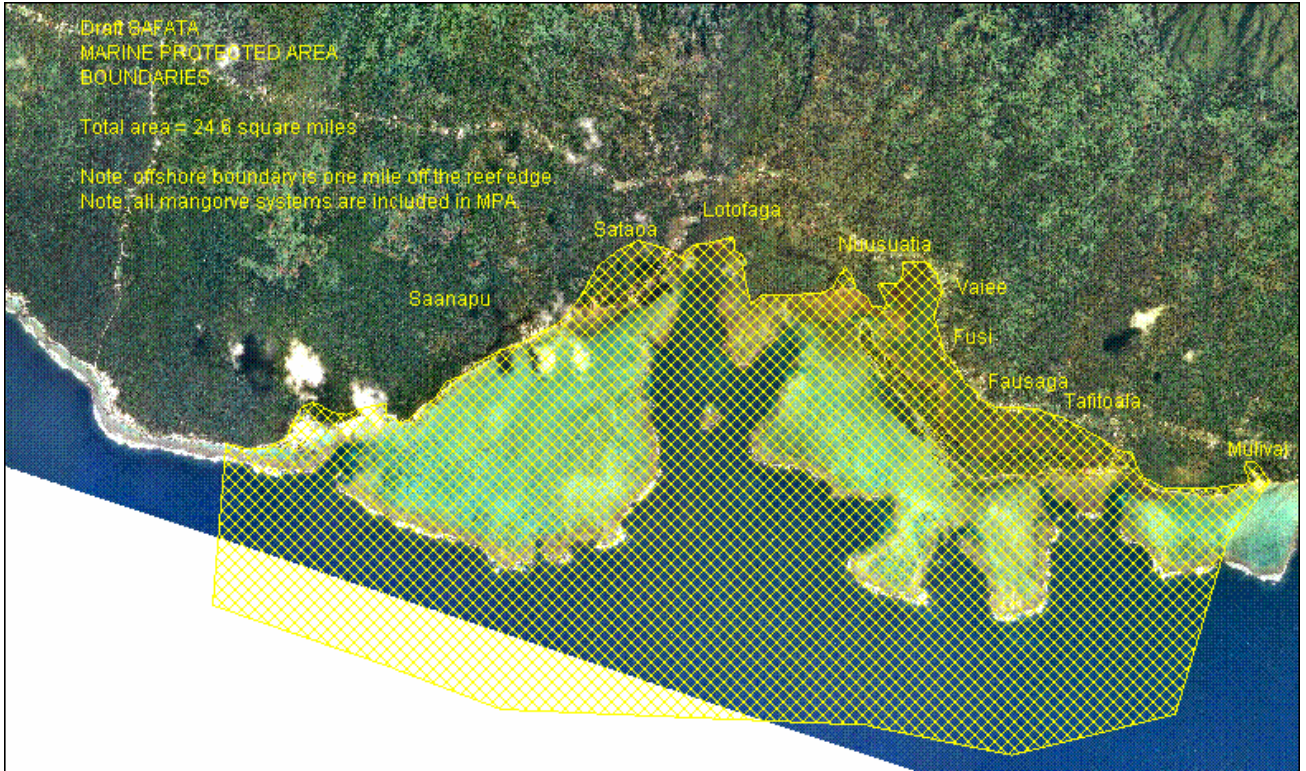
Annex II: No-take zones of Safata MPA

Annex III: Penalty Schedule

Annex IV: User Charges

Annex V: Surveillance and Enforcement Plan

ANNEX I: MAP OF SAFATA MPA



ANNEX III: PENALTY SCHEDULE

Definitions:

- The Safata MPA begins from Ava o le Fu’a at Mulivai in the East and ends at Le niu at Saanapu in the West. The boundary also includes the area from the high water mark to ½ mile seaward from the reef drop-off and includes Aau Gasese.
- The Safata MPA No-take zones are given in Annex 2. Removal of any plant, animal or other material, either living or dead, is banned from these no-take zones unless for Safata MPA approved research purposes.
- Fishing is defined as the take of any fish, invertebrate, plant or other living item from the sea.
- ‘Insiders’ are the people that live in Safata and include those that live outside Safata but have “monotaga” with the villages they come from.
- ‘Outsiders’ are the people that live outside of the Safata District and have no “monotaga” with any village of the district

| MPA District Rules MPA By laws been approved | Penalties and fines for insiders breaking these rules (\$ST) | Penalties and fines for outsiders breaking these rules (\$ST) |
|---------------------------------------------------------------------------------------------------|--------------------------------------------------------------------|------------------------------------------------------------------------|
| A. FISHERIES RULES | | |
| 1. FISHING METHODS | | |
| ❖ Our Safata MPA BANS the use for fishing of: | | |
| • dynamite | \$5,000.00 | \$10,000.00 |
| • ava new guinea & related fish poisons | \$500.00 | \$1000.00 |
| • chlorox or related bleaches | \$500.00 | \$1000.00 |
| • cyanide | \$500.00 | \$1000.00 |
| • gramoxone | \$500.00 | \$1000.00 |
| • Barrintonia Seeds | \$500.00 | \$1000.00 |
| • Coral Pounding | \$500.00 | \$1000.00 |
| • Fish Traps | \$500.00 | \$1000.00 |
| • Fishing Nets less then 2.5 mesh | \$500.00 | \$1000.00 |
| 2. TURTLES | | |
| ❖ Our Safata MPA BANS the harvesting of turtles and their eggs. | \$500.00 | \$1000.00 |
| 3. BIRDS, BATS, COCONUT CRABS | | |
| ❖ Our Safata MPA BANS the harvesting of birds (including bird eggs), bats and coconut crabs. | \$500.00 | \$1000.00 |
| 4. FISHING | | |
| ❖ Our Safata MPA BANS commercial fishing by outsiders in the MPA waters. | N/A | \$10,000.00 |
| ❖ Our Safata MPA BANS fishing by outsiders for subsistence purposes or personal use. | N/A | \$500.00 |
| ❖ Our Safata MPA BANS fishing by tourists. | N/A | \$500.00 |
| 5. NO-TAKE ZONES | | |
| ❖ Our Safata MPA BANS all fishing and take of any material living or dead from the No-Take Zones. | \$500.00 | \$1000.00 |
| 6. SCUBA FISHING | | |
| ❖ Our Safata MPA BANS the use of SCUBA gear for fishing and | \$10,000.00 | \$10,000.00 |
| ❖ Our Safata MPA prohibits SCUBA gear and spear | \$10,000.00 | \$10,000.00 |

| | | |
|----------------------------------------------------------------------------------------------------------------------------------------------------------------------------------------------------------------------------------------------------------------|-------------|-------------|
| fishing gear to be carried in the same boat. | | |
| 7. SAND MINING ❖ Our Safata MPA BANS commercial sand mining. | \$10,000.00 | \$10,000.00 |
| 8. TOURISM ❖ Our Safata MPA requires all tour operators coming into the MPA to have an agreement with the Safata MPA for their tour that shall include not less than ensuring that tourism charges are paid to the MPA. | N/A | \$10,000.00 |
| 9. MANGROVES ❖ Our Safata MPA BANS the clearance of mangroves unless with prior written approval from the village endorsed by the District Committee. | \$500.00 | \$10,000.00 |
| 10. INTRODUCTION OF NEW SPECIES ❖ Our Safata MPA BANS any further introduction of tilapia and any other non-Samoan marine species unless full environmental and social assessments are carried out and the results considered favourable by the Safata MPA. | \$500.00 | \$10,000.00 |
| 11. DUMPING OF RUBISH ❖ Our SAFATA MPA BANS the dumping of rubbish and any other form of damage to our MPA. | \$500.00 | \$10,000.00 |

ANNEX IV: USER CHARGES

The Table details agreed charges for various uses of the Safata Marine Protected Area (MPA). Some of the charges are subject to negotiations and agreements of the MNRE and the Safata MPA District Committee.

| USE TYPE | CHARGE | NOTE |
|---------------------------------------------------------------------------------------------------------------------------------------------------------------------------------------------------------------------------------------------------------------------------------------|-----------------------------------------------------------------------------------------------------------------------------------------|------------------------------------------------|
| <ul style="list-style-type: none"> MPA District Visitors Levy | \$5 per person per visit to the MPA. | This is a basic tourist and visitor levy. |
| <ul style="list-style-type: none"> Launch of Boats at MPA District Centre | \$20 per launch | |
| <ul style="list-style-type: none"> Use of MPA District Centre Facilities | \$5 per person per day \$10 per person for overnight stay | |
| <ul style="list-style-type: none"> MPA District Centre Hire <ul style="list-style-type: none"> ½ day 1-4 days weekly hire (5 working days) 6 or more days | <ul style="list-style-type: none"> \$150 \$275 per day \$1250 per working week) \$250 per day | |
| <ul style="list-style-type: none"> MPA District Centre Hire by individuals or agencies from within the District <ul style="list-style-type: none"> ½ day 1-4 days weekly hire (5 working days) 6 or more days | <ul style="list-style-type: none"> \$50 \$140 per day \$700 per working week) \$100 per day | e.g Churches, community groups |
| <ul style="list-style-type: none"> MPA District Officer | \$200 per day | |
| <ul style="list-style-type: none"> MPA District Vehicle | \$150 per day | Only included if District Officer is involved. |
| <ul style="list-style-type: none"> MPA District Boat | \$250 per day | Only included if District Officer is involved. |

ANNEX V: SURVEILLANCE AND ENFORCEMENT PLAN

FRAMEWORK FOR SURVEILLANCE AND ENFORCEMENT PROGRAM

A. GUIDING PRINCIPLES

- We the people of Safata MPA ALL have a role to play in surveillance and enforcement of our Safata MPA . Importantly, this is through use of our culture and the faasamoa. In essence all our people are ‘policeman’ for the MPA and responsible for reporting any rule breaking through normal village processes supplemented by working with the District Committee and District Officer.
- We believe that we are responsible for our own people and their interaction with the MPA, however, a real threat exists from people from outside of our District. To effect enforcement we need a partnership with the Government of Samoa - especially DLSE, MAFFM, Attorney General and the Police for surveillance and enforcement of our MPA.
- We commit to the critical importance of education and awareness of the rules and penalties of our Safata MPA - people need to have every chance to know these rules so that they can be respected.
- We commit to ensuring that the MPA cost of surveillance and enforcement will be at least partly met by using a portion of the fines for MPA operation.

B. 2008-2010 ACTIONS

➤ **INSIDERS AND PEOPLE OF SAFATA**

1. EDUCATION AND AWARENESS OF MPA RULES AND PENALTIES

Our aim is to ensure all people of the District of Safata are aware and know all the rules and district by-laws for the Safata Marine Protected Area, the following activities should be implemented.

- ❖ Special rules and penalties awareness meetings with each Village Council.
- ❖ Special rules and penalties awareness meetings with the Women.
- ❖ Special rules and penalties awareness meetings with the Aumaga.
- ❖ Special rules and penalties awareness meetings with the Youth.
- ❖ District Committee representative to consistently inform and update their respective Village Council during their village fono.
- ❖ Prepare a summary of the rules penalties and district by-laws and distribute them to every household, school, meeting houses, village signboards and any other public places in Safata.
- ❖ Public notices on TV, radio and news paper.
- ❖ Special awareness day for Safata District, dance, song and sports competition (provide prizes for these activities).

These meetings need at least annual follow up in order to maintain awareness and support generated, to update on any changes to agreed rules/panalties in the MPA, and to provide positive reinforcement of the role all our people need to play in surveillance and enforcement of our MPA.

2. PROGRESS FOR WHEN A RULE IS BROKEN:

In violation of the rules and District by-laws the progress will be:

- ❖ Local village observer to inform the Pulenu'u and the village council of that respectful village where the offender comes from. If the local observer is not from the same village as the offender, then this report could be done with help from the District Committee member of his/her village and District Officer.
- ❖ Proof and witness should be provided consistent with the normal village Council protocols before any penalty or fine is served by any offender.
- ❖ Pulenu'u in the MPA District Committee member of that particular village about the violation and
- ❖ District Committee member inform the MPA District Officer.
- ❖ The village council will penalise the offender consistent with the fine schedule approved by the District Committee.
- ❖ No warning will be given to any offender.
- ❖ The offender should serve his penalty immediately, as instructed by the village council.
- ❖ If the offender refuses, the village council will impose the second penalty consistent with the normal cultural practices.
- ❖ If the offender continues to object the village council will decide on other severe punishment like banishment from the village or other suitable measure.
- ❖ A \$50.00 portion of the offender's fine will be contributed to the MPA Trust Fund.

3. LOCAL VILLAGE AND DISTRICT SURVEILLANCE SYSTEM:

A local village and District surveillance system will be in place in order to know when the rules and District by-laws have been violated.

- ❖ The surveillance system should provide proof and evidence to ensure offenders are rightly penalised.
- ❖ The system will include all people of Safata as surveillance officers of the rules and the District by-laws. It is noted that fishermen and fisher women are key people in the surveillance and enforcement program.
- ❖ All fishing boat owners in the District will be asked to assist whenever possible and upon request to assist with the surveillance program.
- ❖ All fishing boats from Safata should they observe illegal activities in the MPA should report immediately to the District Officer.

➤ PEOPLE FROM OUTSIDE SAFATA:

1. EDUCATION AND AWARENESS OF MPA RULES AND PENALTIES

Our aim is to ensure all people coming to our Safata are aware and know all the rules/penalties and District by laws for the Safata MPA, the following activities should be implemented (in conjunction with no 1 activity above).

- ❖ Public notices, TV, Radio, News paper
- ❖ MPA workshop with Upolu Pulenuu, tour operators and other relevant stakeholders.
- ❖ Workshop to inform groups like longline fishermen association and boat owners, about the MPA rules and by-laws
- ❖ Workshop with all relevant government agencies e.g Police, Fisheries and DEC about MPA rules and by-laws.
- ❖ Workshop with neighbouring villages/districts adjacent to the Safata MPA.
- ❖ Permanent MPA rule/penalty signage information posted at shops, schools, buses, District centre, boat launch sites, tourist fairs etc throughout the District.

In all of these permanent record of the rules and penalties and overall MPA rationale and function needs to be left with individuals and agencies.

There will need to be annual followup and reinforcement of these activities as noted in point 1 above.

2. PROCESS FOR WHEN A RULE IS BROKEN:

These measures need to be clarified with the Government of Samoa and this is a key top priority for implementation. We envisage that the steps that should be taken would involve:

- ❖ Agreement for Local Enforcement Officer in each village and supplemented by the District Officer who are trained and empowered legally to act on any infringement by outsiders (compare fisheries officers) and support by local police.
- ❖ Power should include authority to, with the District Officer fully involved.
 - Confiscate boat/canoes, fishing equipment and catch
 - Collect all relevant evidence and information for prosecutions.
 - Inform relevant Government agencies - police, Fisheries, MNRE.
- ❖ The Government of Samoa is looked to for assistance to proceed with prosecutions.
- ❖ We the District of Safata, retain the option to use appropriate customary procedures for violators, whereby within the agreed rules and penalties framework, the District committee will decide action taken.
- ❖ If the violators cannot meet the fine and penalties, then any boat and equipment confiscated could be sold to cover costs.
- ❖ The Government of Samoa (Treasury) is requested to ensure that the fines from any successful prosecution must go the Safata MPA Trust Fund to assist in investment in effective MPA management.

3. SURVEILLANCE SYSTEM:

An effective surveillance system should be in place in order to know the rules and District by laws have been violated. This is combined in effort with the local surveillance system outlined above but needs to involve police, fisheries officers, MPA District Officer and locally empowered officers as described above in addition:

- ❖ The District Officer will be responsible for collecting all information on outsiders violation.
- ❖ The Nafanua (Police Boat Boat) is requested to conducted regular checks, during their normal operation, of the offshore areas of the MPA and to provide a report to the Safata MPA of these activities.
- ❖ The Police, Fisheries, MNRE are requested to participate with the District Officer and Committee to produce and to assist with information leading to a violation of district rules by outsiders.

C. SURVEILLANCE AND ENFORCEMENT MONITORING:

Surveillance and enforcement monitoring requirements:

- ❖ All rules and district by-laws violation and followup actions taken should be reported to the District Officer by the District Committee members.
- ❖ Fines will be properly recorded and accounted for by the District Officer. The District Officer will keep an update record of all incidences.
- ❖ The District Officer should report to the District Committee during their monthly meetings on all incidences related to surveillance and enforcement.
- ❖ The District Officer should also report to the Government on all fines and penalties updates.

- ❖ The District Officer will prepare news releases for the media reporting on violations both by insiders and outsiders.

D. RESOURCES REQUIRED

The above programme will require additional resources for establishment and will involve some ongoing cost items.

❖ EQUIPMENT

- MPA boat- secured, but needs signage to more clearly show it is the MPA boat e. g on the hull.
- Related boat equipment, binoculars, marine radios (some secured) flares first aid kit.
- Land based phone at District Centre
- Signage e. g. no take zone signage
- Caps, t-shirts to identify those involved for surveillance of outsiders.
- Laminated rules/penaltiesMPA fact sheets.

Training and Capacity Building in the Surveillance and Enforcement Programme:

- District Officer
- District Committee and local Volunteers
- Police, Fisheries Officers, MNRE relevant staff.

Education and Awareness:

- Workshop costs (see above)
- MPA Rules and Penalties Fact sheets
- Advertisements and public notices (see above)

Ongoing costs:

- Boat operation and maintenance, oil, petrol, gear maintenance, replacement
- Signage update/MPA Rules/Penalties fact sheets.
- Meal allowance for local volunteers and others to provide their own food when working for the MPA
- Follow up education and awareness activities.
- District Officer staff costs
- District vehicle operation