

**SECRETARIAT OF THE  
PACIFIC COMMUNITY**

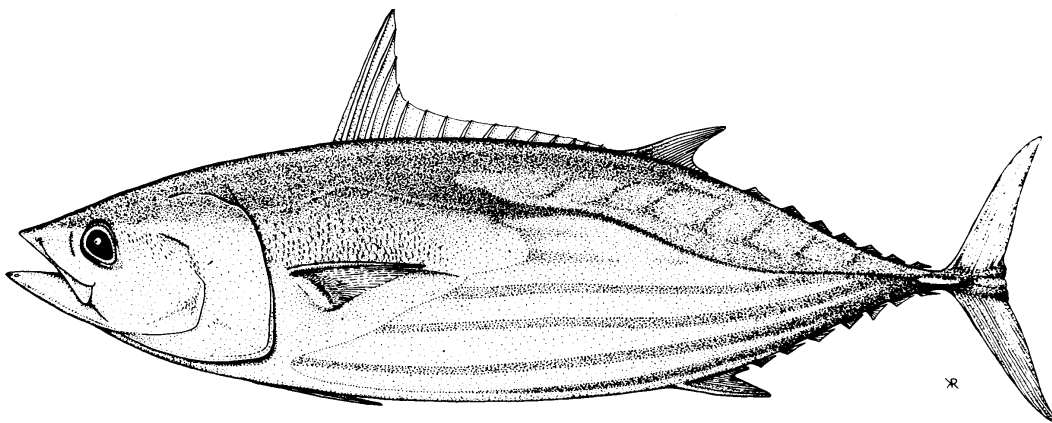
**SECRÉTARIAT GÉNÉRAL DE LA  
COMMUNAUTÉ DU PACIFIQUE**

**WESTERN AND CENTRAL PACIFIC  
OCEAN TUNA BULLETIN**

**BULLETIN DES THONIDÉS POUR L'OCÉAN  
PACIFIQUE OCCIDENTAL ET CENTRAL**

**JANUARY 2005**

**JANVIER 2005**



Oceanic Fisheries Programme  
Secretariat of the  
Pacific Community  
Noumea, New Caledonia



Programme pêche hauturière  
Secrétariat général de la  
Communauté du Pacifique  
Nouméa, Nouvelle-Calédonie

© Copyright Secretariat of the Pacific Community, 2005

All rights for commercial / for profit reproduction or translation, in any form, reserved. The SPC authorises the partial reproduction or translation of this material for scientific, educational or research purposes, provided that SPC and the source document are properly acknowledged. Permission to reproduce the document and/or translate in whole, in any form, whether for commercial / for profit or non-profit purposes, must be requested in writing. Original SPC artwork may not be altered or separately published without permission.

Original text: English

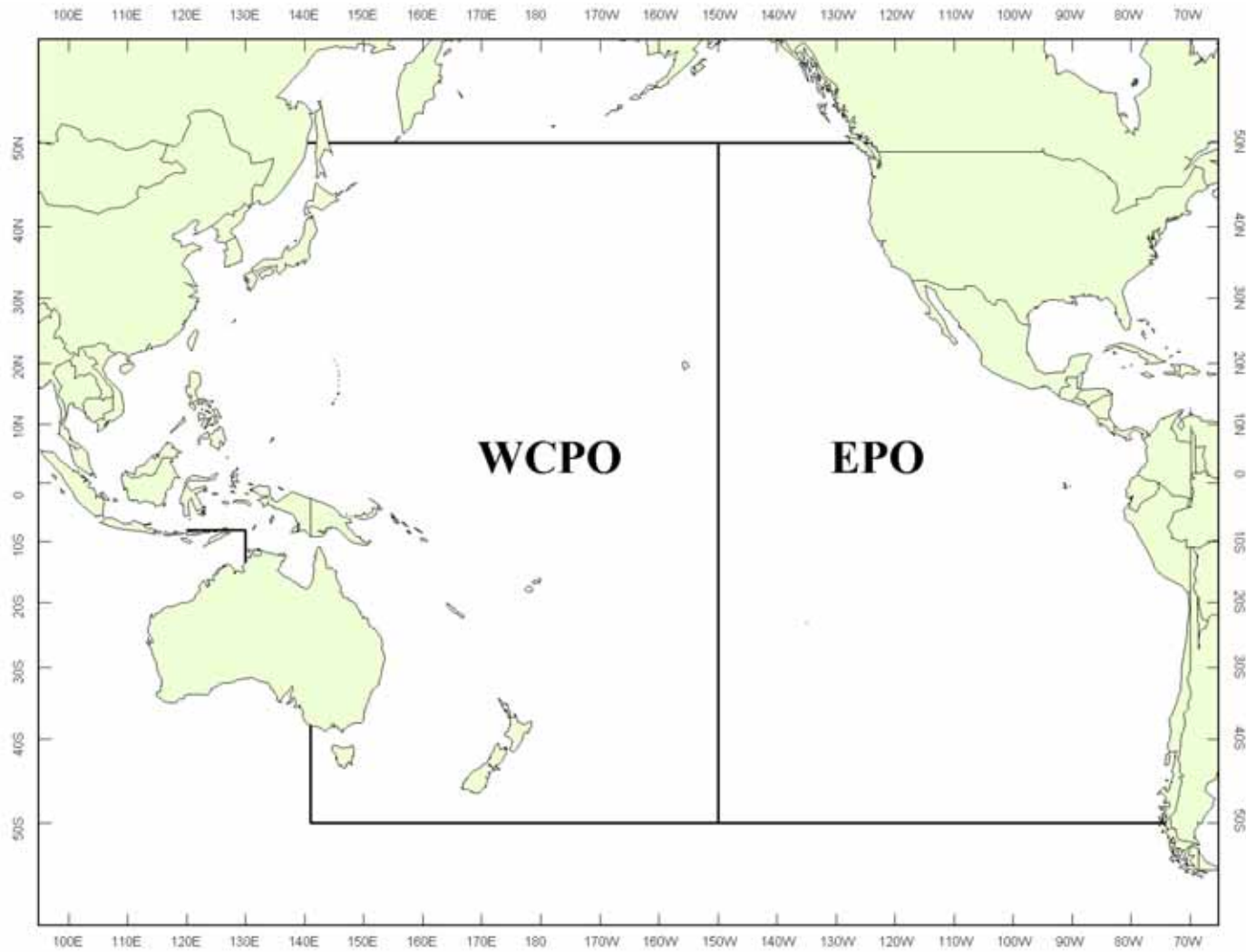
© Copyright Secrétariat général de la Communauté du Pacifique, 2005

Tous droits réservés de reproduction ou de traduction à des fins commerciales/lucratives, sous quelque forme que ce soit. Le Secrétariat général de la Communauté du Pacifique autorise la reproduction ou la traduction partielle de ce document à des fins scientifiques ou éducatives ou pour les besoins de la recherche, à condition qu'il soit fait mention de la CPS et de la source. L'autorisation de la reproduction et/ou de la traduction intégrale ou partielle de ce document, sous quelque forme que ce soit, à des fins commerciales/lucratives ou à titre gratuit, doit être sollicitée au préalable par écrit. Il est interdit de modifier ou de publier séparément des graphismes originaux de la CPS sans autorisation préalable.

Texte original : anglais

## TABLE OF CONTENTS

LONGLINE.....	5
Australia.....	5
China.....	7
Cook Islands .....	9
Federated States of Micronesia.....	11
Fiji Islands .....	13
French Polynesia.....	15
Japan .....	17
New Caledonia .....	19
Papua New Guinea .....	21
Samoa .....	23
Chinese Taipei, offshore, east of 130°E .....	25
Chinese Taipei, distant-water .....	27
POLE-AND-LINE .....	29
Japan .....	29
Solomon Islands .....	31
PURSE SEINE.....	33
Federated States of Micronesia.....	33
Japan .....	35
Papua New Guinea .....	37
Republic of Korea.....	39
Chinese Taipei .....	41
United States of America.....	43



**Figure 1. Western and Central Pacific Ocean (WCPO) and Eastern Pacific Ocean (EPO)**

**Figure 1. Océan Pacifique occidental et central (WCPO) et Océan Pacifique Est (EPO)**

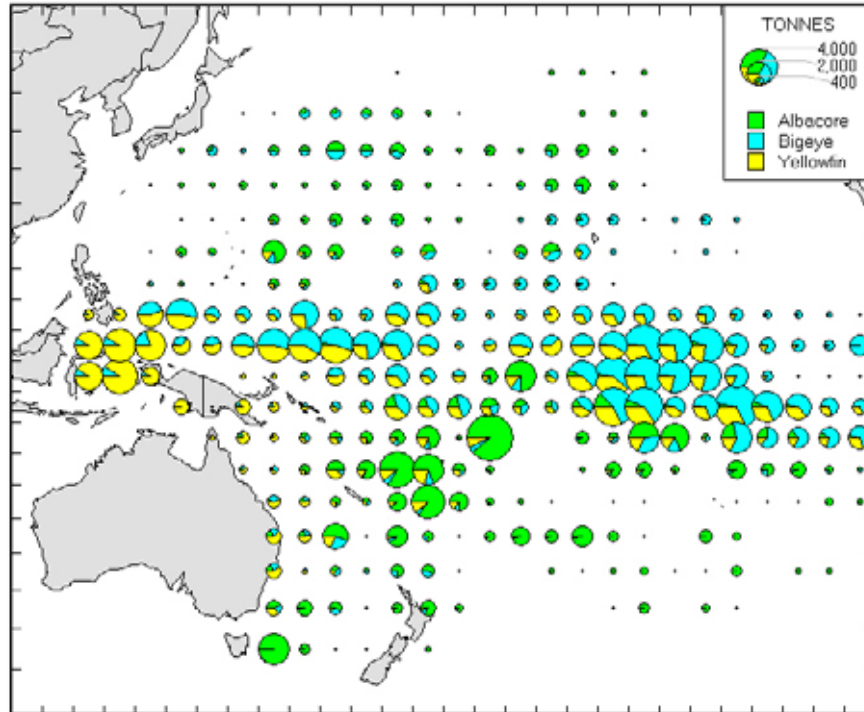


Figure 2. Longliner catch in 2001, determined from data held at SPC on 31 December 2004

Figure 2. Prises à la palangre en 2001 à partir des données dont disposait la CPS au 31 décembre 2004

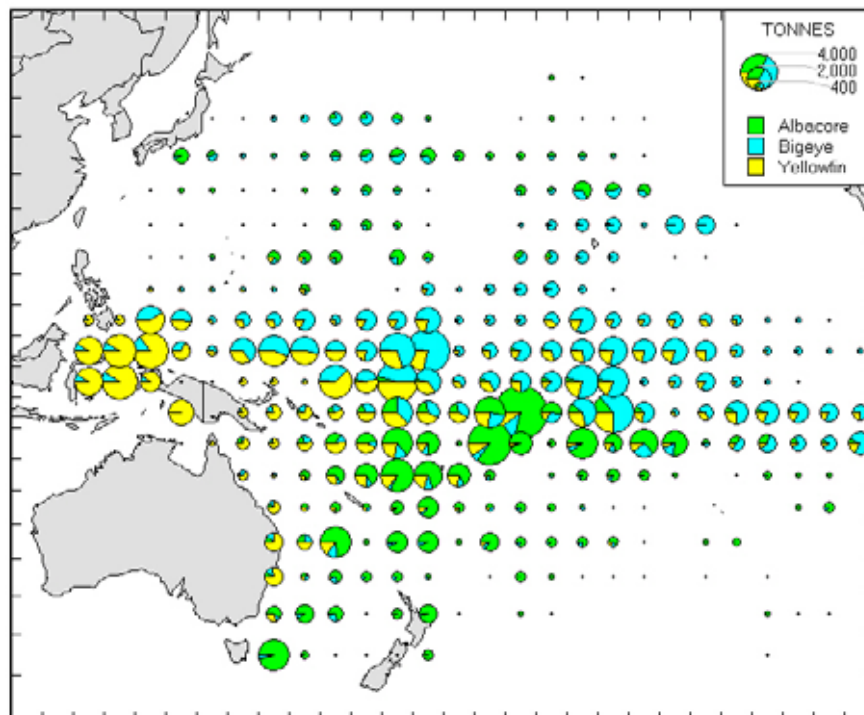
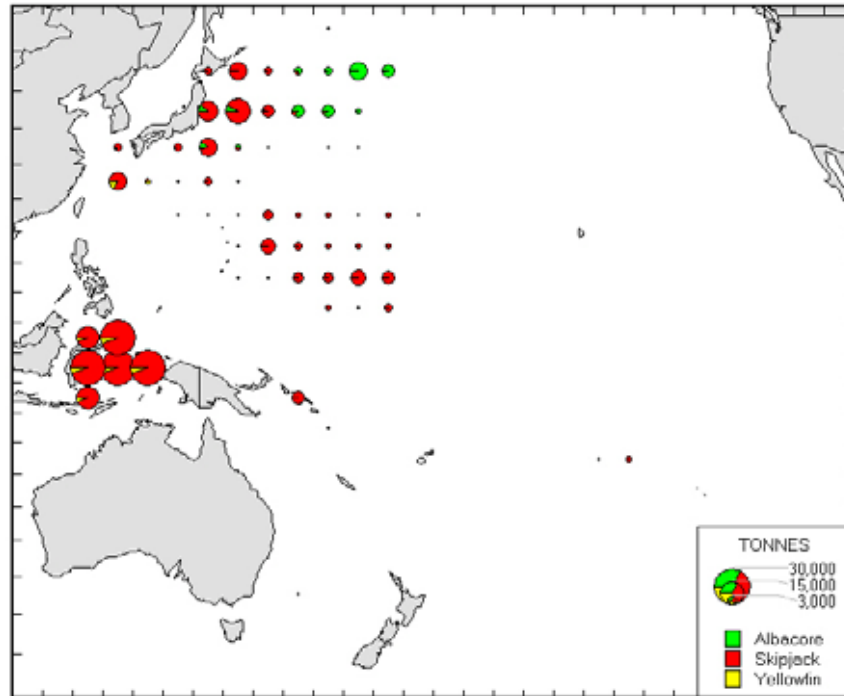


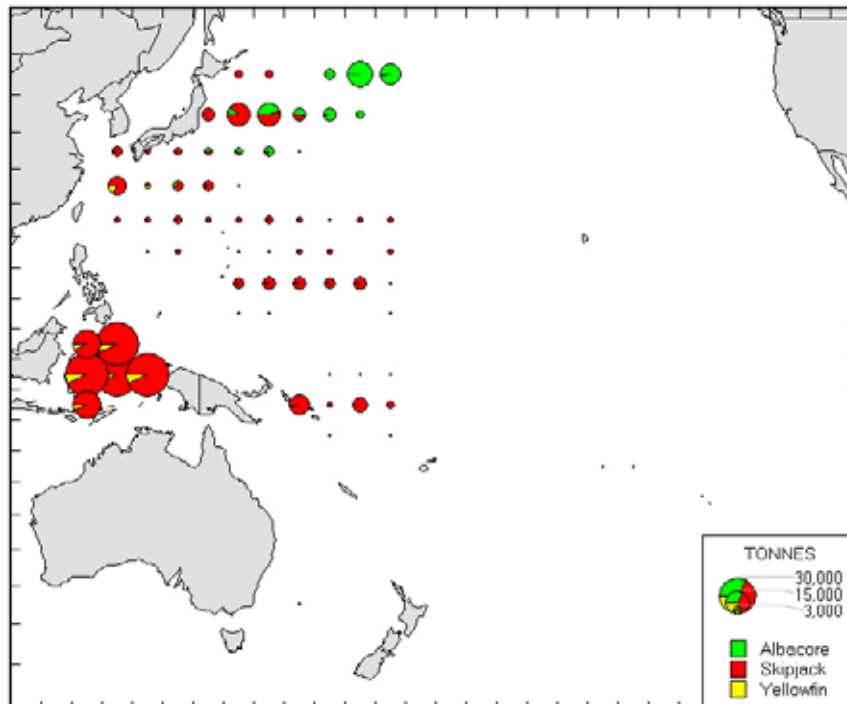
Figure 3. Longliner catch in 2002, determined from data held at SPC on 31 December 2004

Figure 3. Prises à la palangre en 2002 à partir des données dont disposait la CPS au 31 décembre 2004



**Figure 4. Pole-and-line catch in 2001, determined from data held at SPC on 31 December 2004**

**Figure 4. Prises de pêche à la canne en 2001 à partir des données dont disposait la CPS au 31 décembre 2004**



**Figure 5. Pole-and-line catch in 2002, determined from data held at SPC on 31 December 2004**

**Figure 5. Prises de pêche à la canne en 2002 à partir des données dont disposait la CPS au 31 décembre 2004**

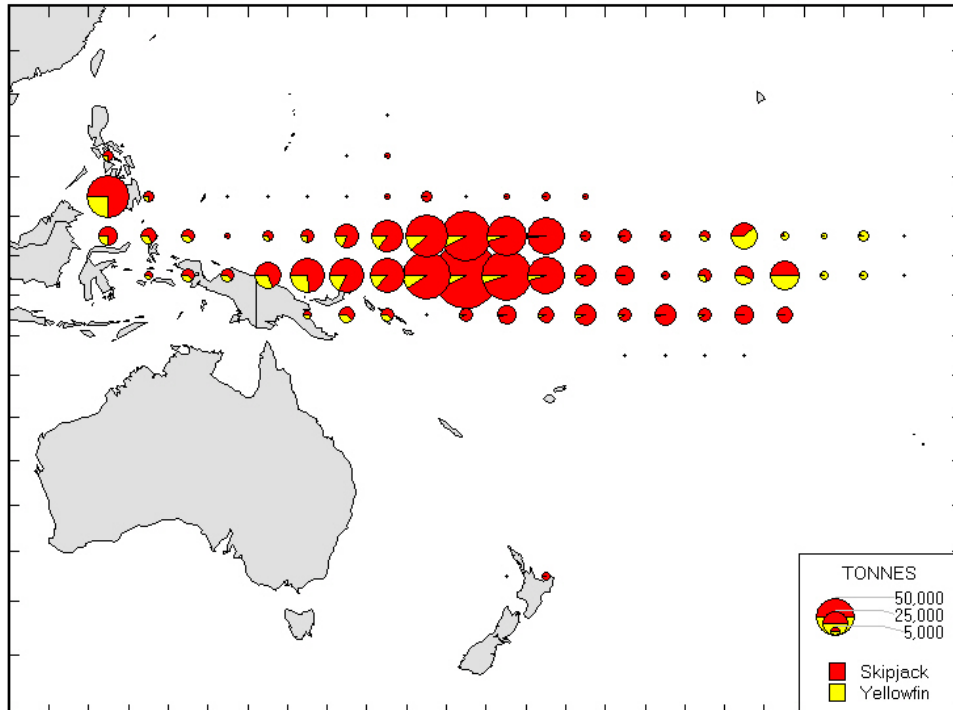


Figure 6. Purse-seine catch in 2002, determined from data held at SPC on 31 December 2004

Figure 6. Prises de pêche à la senne en 2002 à partir des données dont disposait la CPS au 31 décembre 2004

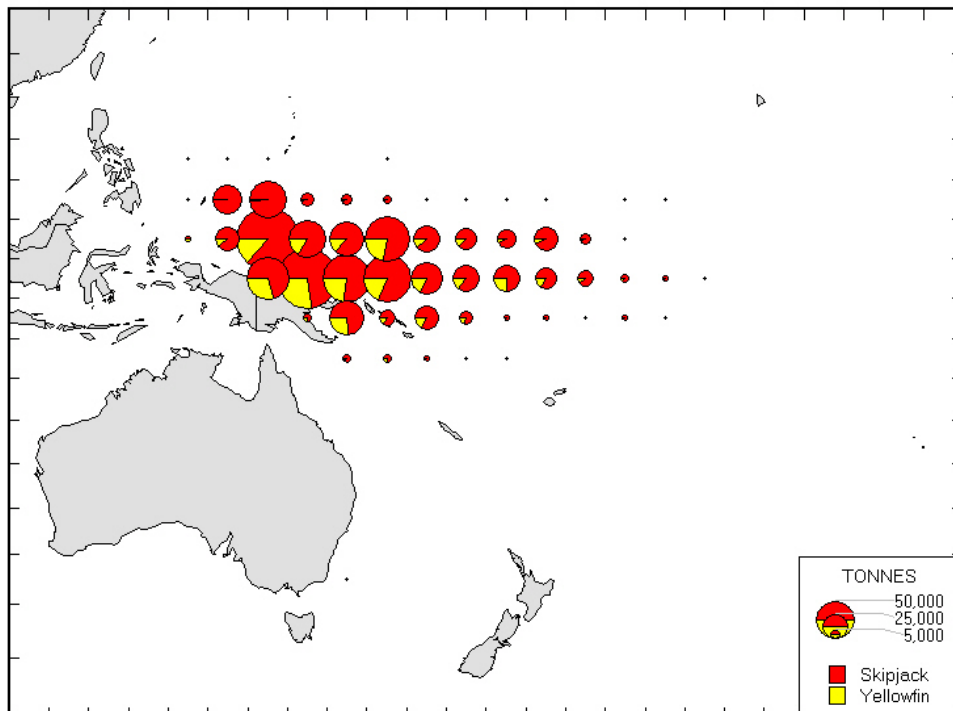


Figure 7. Purse-seine catch in 2003, determined from data held at SPC on 31 December 2004

Figure 7. Prises de pêche à la senne en 2003 à partir des données dont disposait la CPS au 31 décembre 2004

## LONGLINE: AUSTRALIA

The statistics in Table 1, which cover Australian longliners in the Western and Central Pacific Ocean (Figure 1), were determined from logsheet data held at SPC on 31 December 2004. Coverage rates are 89 per cent for 2002 and 98 per cent for 2003; the statistics in Table 1 have not been raised to represent complete coverage. Figure 8 presents catch rates for albacore, bigeye, yellowfin and all species combined. Figure 9 presents estimates of annual catches in the entire WCPO.

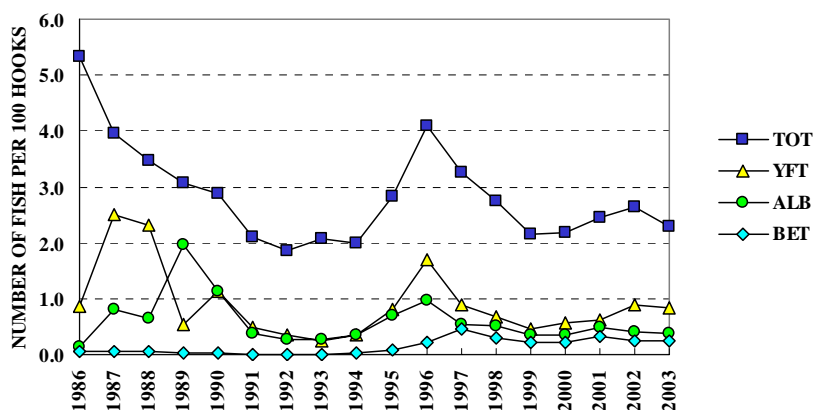


Figure 8. Australian longliner catch rates (number of fish per 100 hooks) for albacore (ALB), bigeye (BET), yellowfin (YFT) and total catch (TOT)

Figure 8. Taux de prise (nombre de poissons capturés pour 100 hameçons) de germon (ALB), thon obèse (BET), de thon jaune (YFT) et prises totales (TOT) des palangriers d'Australie

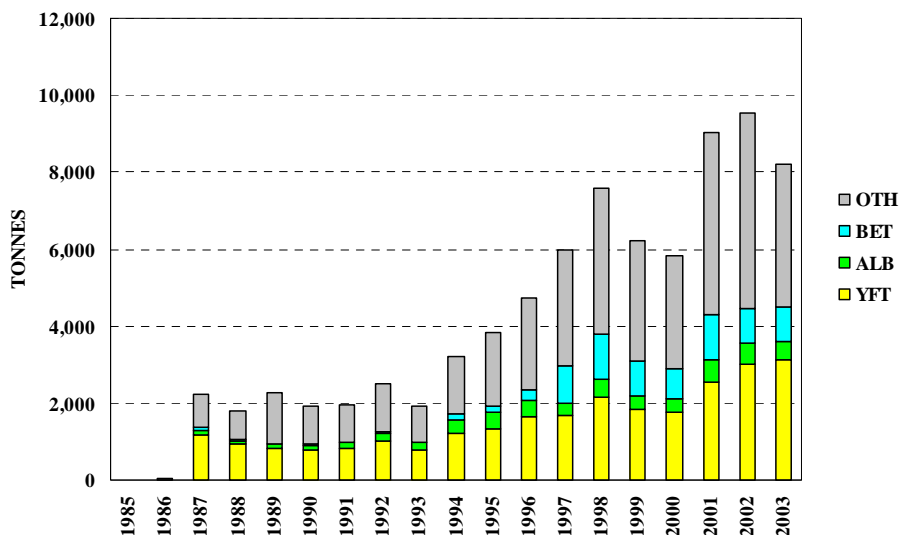


Figure 9. Catches (tonnes) of albacore (ALB), bigeye (BET), yellowfin (YFT) and other species (OTH) by Australian longliners

Figure 9. Prises (en tonnes) de germon (ALB), thon obèse (BET), de thon jaune (YFT) et d'autres espèces (OTH) des palangriers d'Australie



**Table 1. Catch statistics for Australian longliners.** Units: Days Covered = days on which hooks were set; Catch = tonnes; CPUE = number of fish per 100 hooks.

**Tableau 1. Statistiques de prise des palangriers d'Australie.** Unités : Nbr. de Jours = nombre de jours de mise en place des hameçons; Prises = tonnes; PUE = nombre de poissons capturés pour 100 hameçons mouillés.

MONTH	VESSELS COVERED	DAYS COVERED	ALBACORE		BIGEYE		YELLOWFIN		OTHERS	TOTAL	
			CATCH	CPUE	CATCH	CPUE	CATCH	CPUE		CATCH	CPUE
MOIS	NBR. DE NAVIRES	NBR. DE JOURS	GERMON		THON OBÈSE		THON JAUNE		AUTRES	TOTAL	
			PRISES	PUE	PRISES	PUE	PRISES	PUE		PRISES	PUE
JAN/01	103	887	6	0.07	50	0.18	207	0.74	319	581	2.07
FEB	106	833	3	0.03	47	0.17	181	0.57	226	456	1.72
MAR	104	888	27	0.25	64	0.24	181	0.64	264	535	2.29
APR	110	955	42	0.43	100	0.35	155	0.51	247	544	2.43
MAY	113	1,044	43	0.37	194	0.60	165	0.55	249	651	2.38
JUN	114	1,091	77	0.71	197	0.60	120	0.33	309	703	2.62
JUL	114	943	85	0.95	119	0.43	182	0.64	298	684	2.94
AUG	121	1,093	135	1.30	114	0.36	263	0.79	328	840	3.41
SEP	124	1,260	109	0.86	104	0.25	433	1.09	341	986	3.03
OCT	121	1,260	35	0.27	76	0.20	277	0.76	453	841	2.01
NOV	121	980	17	0.16	60	0.21	131	0.42	441	649	1.98
DEC	118	933	15	0.17	38	0.12	125	0.36	415	593	2.39
TOT	155	12,167	593	0.48	1,163	0.31	2,420	0.63	3,888	8,064	2.46
AVG	114	1,014	49	0.46	97	0.31	202	0.62	324	672	2.44
JAN/02	109	869	14	0.15	30	0.12	100	0.39	368	511	2.22
FEB	114	976	15	0.14	62	0.19	183	0.66	407	667	2.76
MAR	120	1,103	27	0.20	95	0.26	167	0.44	452	740	2.39
APR	117	1,206	52	0.36	130	0.35	215	0.59	257	655	2.32
MAY	122	1,062	74	0.57	122	0.42	183	0.65	285	664	2.61
JUN	117	947	92	0.81	86	0.34	233	1.01	207	618	2.94
JUL	117	1,240	126	0.95	78	0.23	509	1.60	276	989	3.51
AUG	115	1,055	70	0.69	74	0.33	471	1.76	258	873	3.77
SEP	114	1,056	37	0.36	81	0.31	341	1.19	306	765	2.84
OCT	117	1,054	18	0.15	24	0.07	197	0.69	301	540	1.66
NOV	123	1,188	21	0.18	40	0.10	242	0.74	442	745	2.15
DEC	115	964	14	0.15	86	0.31	259	0.90	344	702	2.35
TOT	151	12,720	560	0.40	908	0.25	3,100	0.89	3,903	8,471	2.63
AVG	117	1,060	47	0.39	76	0.25	258	0.89	325	706	2.63
JAN/03	118	1,091	20	0.14	50	0.16	199	0.62	391	660	1.87
FEB	117	1,084	13	0.09	63	0.19	261	0.76	436	773	2.13
MAR	116	1,162	16	0.11	82	0.22	277	0.74	317	692	1.95
APR	117	1,102	19	0.14	117	0.35	280	0.80	185	602	2.03
MAY	116	1,152	38	0.24	156	0.41	213	0.65	238	645	2.06
JUN	114	1,127	103	0.83	105	0.34	215	0.65	258	681	2.52
JUL	114	1,137	95	0.91	100	0.32	219	0.65	287	702	2.60
AUG	116	1,172	76	0.80	83	0.30	455	1.51	289	903	3.45
SEP	111	1,009	47	0.51	67	0.26	385	1.34	291	791	2.90
OCT	116	1,128	42	0.39	57	0.21	345	0.93	274	718	2.28
NOV	96	913	15	0.17	21	0.07	205	0.73	254	495	1.82
DEC	88	668	8	0.11	19	0.09	98	0.47	229	354	1.67
TOT	148	12,745	493	0.38	920	0.25	3,153	0.83	3,451	8,016	2.30
AVG	112	1,062	41	0.37	77	0.24	263	0.82	288	668	2.27

## LOGLINE: CHINA

The statistics in Table 2, which cover Chinese longliners in the Western and Central Pacific Ocean (Figure 1), were determined from logsheet data held at SPC on 31 December 2004. The coverage rate is 32 per cent for 2002; the statistics in Table 2 have not been raised to represent complete coverage. Figure 10 presents catch rates for bigeye, yellowfin and all species combined. Table 2 and Figure 10 do not cover longliners targeting albacore in temperate waters during 1999–2001. Figure 11 presents estimates of annual catches in the entire WCPO.

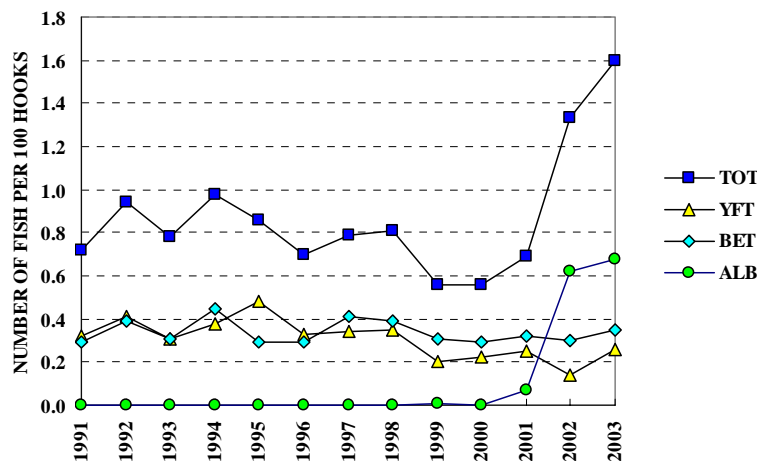


Figure 10. Chinese longliner catch rates (number of fish per 100 hooks) for bigeye (BET), yellowfin (YFT) and total catch (TOT)

Figure 10. Taux de prise (nombre de poissons capturés pour 100 hameçons) de thon obèse (BET), de thon jaune (YFT) et prises totales (TOT) des palangriers de Chine

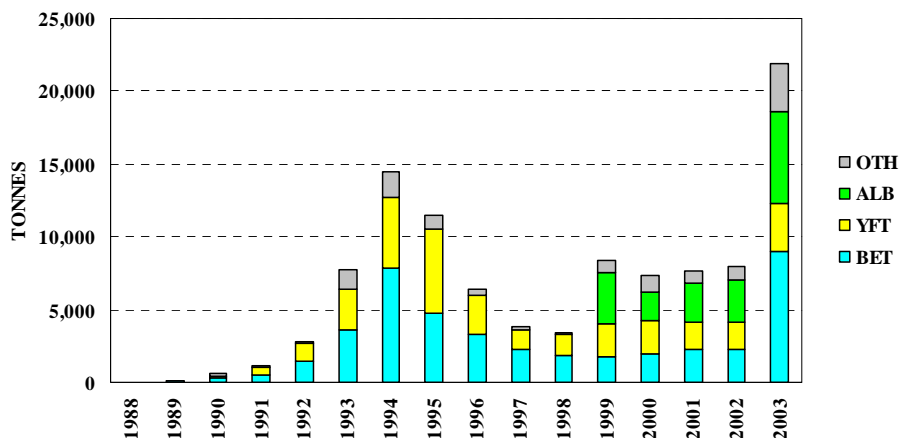


Figure 11. Catches (tonnes) of bigeye (BET), yellowfin (YFT) and other species (OTH) by Chinese longliners

Figure 11. Prises (en tonnes) de thon obèse (BET), de thon jaune (YFT) et d'autres espèces (OTH) des palangriers de Chine

**Table 2. Catch statistics for Chinese longliners.** Units: Days Covered = days on which hooks were set; Catch = tonnes; CPUE = number of fish per 100 hooks.

**Tableau 2. Statistiques de prise des palangriers de la Chine.** Unités : Nbr. de Jours = nombre de jours de mise en place des hameçons; Prises = tonnes; PUE = nombre de poissons capturés pour 100 hameçons mouillés.

MONTH	VESSELS COVERED	DAYS COVERED	ALBACORE		BIGEYE		YELLOWFIN		OTHERS	TOTAL	
			CATCH	CPUE	CATCH	CPUE	CATCH	CPUE		CATCH	CPUE
MOIS	NBR. DE NAVIRES	NBR. DE JOURS	GERMON		THON OBÈSE		THON JAUNE		AUTRES	TOTAL	
			PRISES	PUE	PRISES	PUE	PRISES	PUE		PRISES	PUE
JAN/02	55	721	13	0.10	69	0.28	16	0.08	31	129	1.19
FEB	42	363	13	0.28	38	0.29	18	0.20	11	81	1.02
MAR	47	598	0	0.00	68	0.33	44	0.33	21	134	1.46
APR	34	510	1	0.01	57	0.32	24	0.17	30	112	1.82
MAY	39	569	42	0.49	62	0.28	26	0.16	23	151	1.05
JUN	45	733	181	1.22	62	0.19	44	0.16	23	311	1.66
JUL	82	977	79	0.50	121	0.34	45	0.15	42	287	1.14
AUG	82	1,185	198	1.39	107	0.24	25	0.07	43	373	1.91
SEP	86	1,206	90	0.63	135	0.32	37	0.11	24	287	1.14
OCT	74	989	62	0.51	125	0.31	31	0.10	15	234	0.98
NOV	65	982	67	0.43	119	0.31	30	0.11	38	255	1.01
DEC	53	528	71	0.77	75	0.37	41	0.25	20	207	1.57
TOT	107	9,361	818	0.62	1,039	0.30	380	0.14	322	2,559	1.33
AVG	59	780	68	0.53	87	0.30	32	0.16	27	213	1.33
JAN/03	39	473	56	0.57	99	0.50	58	0.36	28	241	1.68
FEB	51	760	23	0.18	119	0.42	71	0.32	39	251	1.11
MAR	47	901	28	0.20	127	0.41	62	0.28	66	283	1.20
APR	49	888	35	0.24	134	0.46	108	0.61	70	347	1.76
MAY	52	970	174	0.88	137	0.43	73	0.30	88	473	2.00
JUN	48	811	144	0.82	109	0.37	80	0.36	75	407	1.91
JUL	43	677	203	1.28	65	0.21	67	0.28	72	408	2.32
AUG	56	956	142	0.90	102	0.26	43	0.13	66	352	1.62
SEP	58	1,107	137	0.71	132	0.29	43	0.14	60	372	1.44
OCT	59	974	137	0.62	129	0.32	39	0.13	57	361	1.33
NOV	52	1,019	211	0.90	133	0.30	48	0.16	51	443	1.54
DEC	47	745	72	0.51	93	0.33	36	0.17	31	232	1.18
TOT	94	10,281	1,362	0.68	1,378	0.35	728	0.26	702	4,171	1.60
AVG	50	857	114	0.65	115	0.36	61	0.27	59	348	1.59
JAN/04	16	172	1	0.04	26	0.36	4	0.06	8	39	0.59
FEB	0	—	—	—	—	—	—	—	—	—	—
MAR	0	—	—	—	—	—	—	—	—	—	—
APR	0	—	—	—	—	—	—	—	—	—	—
MAY	0	—	—	—	—	—	—	—	—	—	—
JUN	0	—	—	—	—	—	—	—	—	—	—
JUL	0	—	—	—	—	—	—	—	—	—	—
AUG	0	—	—	—	—	—	—	—	—	—	—
SEP	0	—	—	—	—	—	—	—	—	—	—
OCT	0	—	—	—	—	—	—	—	—	—	—
NOV	0	—	—	—	—	—	—	—	—	—	—
DEC	0	—	—	—	—	—	—	—	—	—	—
TOT	16	172	1	0.04	26	0.36	4	0.06	8	39	0.59
AVG	16	172	1	0.04	26	0.36	4	0.06	8	39	0.59

### LONGLINE: COOK ISLANDS

The statistics in Table 3, which cover Cook Islands, were determined from logsheet data held at SPC on 31 December 2004. Coverage rates are 80 per cent for 2002 and 86 per cent for 2003; the statistics in Table 3 have not been raised to represent complete coverage. Figure 12 presents catch rates for albacore, bigeye, yellowfin and all species combined. Figure 13 presents estimates of annual catches.

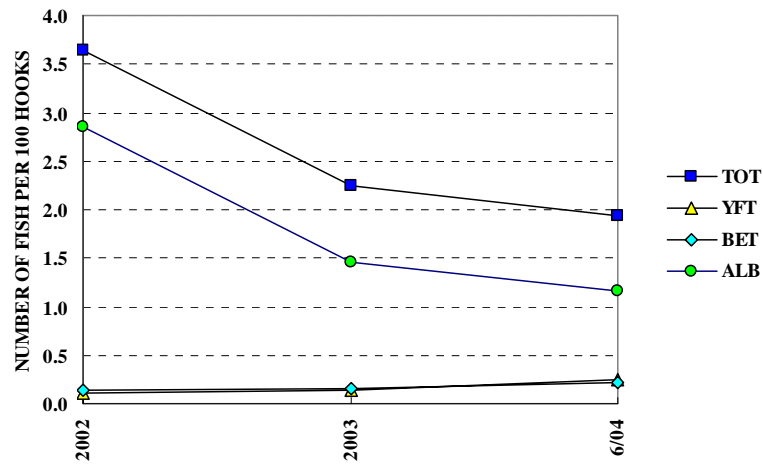


Figure 12. Cook Islands longliner catch rates (number of fish per 100 hooks) for albacore (ALB), bigeye (BET), yellowfin (YFT) and total catch (TOT)

Figure 12. Taux de prise (nombre de poissons capturés pour 100 hameçons) de germon (ALB), de thon obèse (BET), de thon jaune (YFT) et prises totales (TOT) des palangriers des Îles Cook

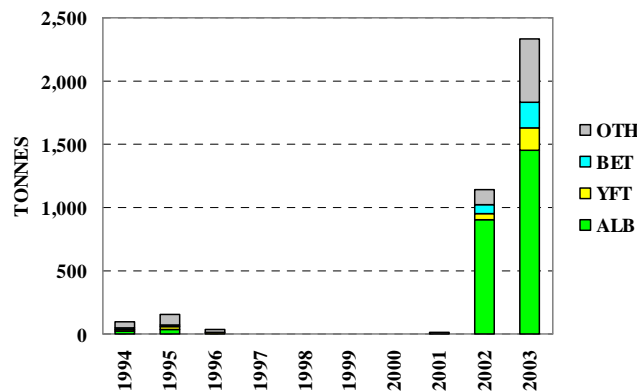


Figure 13. Catches (tonnes) of albacore (ALB), bigeye (BET), yellowfin (YFT) and other species (OTH) by Cook Islands longliners

Figure 13. Prises (en tonnes) de germon (ALB), de thon obèse (BET), de thon jaune (YFT) et d'autres espèces (OTH) des palangriers des Îles Cook

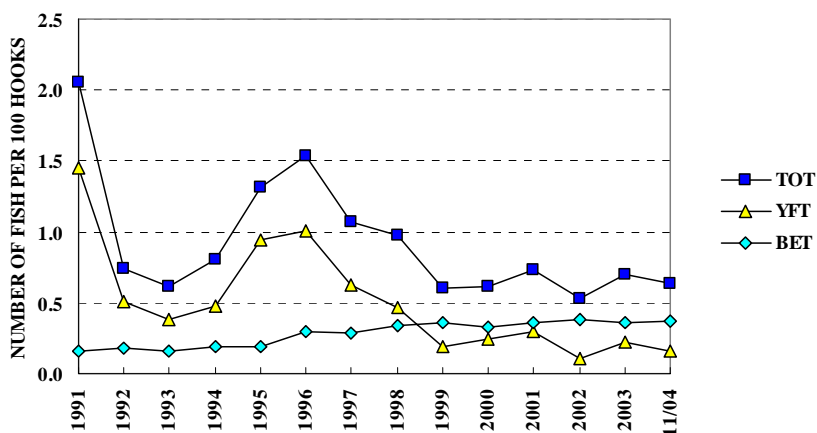
**Table 3. Catch statistics for Cook Islands longliners.** Units: Days Covered = days on which hooks were set; Catch = tonnes; CPUE = number of fish per 100 hooks.

**Tableau 3. Statistiques de prise des palangriers des Îles Cook.** Unités : Nbr. de Jours = nombre de jours de mise en place des hameçons; Prises = tonnes; PUE = nombre de poissons capturés pour 100 hameçons mouillés.

MONTH	VESSELS COVERED	DAYS COVERED	ALBACORE		BIGEYE		YELLOWFIN		OTHERS	TOTAL	
			CATCH	CPUE	CATCH	CPUE	CATCH	CPUE		CATCH	CPUE
MOIS	NBR. DE NAVIRES	NBR. DE JOURS	GERMON		THON OBÈSE		THON JAUNE		AUTRES	TOTAL	
			PRISES	PUE	PRISES	PUE	PRISES	PUE		PRISES	PUE
JAN/02	0	—	—	—	—	—	—	—	—	—	—
FEB	1	2	0	0.46	0	0.08	0	0.04	0	1	0.81
MAR	2	18	10	2.44	2	0.24	3	0.35	0	15	3.17
APR	3	30	22	2.54	3	0.16	1	0.06	3	29	2.95
MAY	5	68	45	2.38	4	0.09	5	0.17	12	65	3.07
JUN	5	81	71	3.15	7	0.15	2	0.06	11	91	3.78
JUL	7	95	74	2.75	5	0.11	4	0.10	13	97	3.50
AUG	7	106	112	3.75	12	0.25	7	0.15	11	142	4.64
SEP	9	126	106	2.72	7	0.09	7	0.10	20	140	3.59
OCT	9	100	95	3.06	5	0.08	6	0.10	14	120	3.71
NOV	7	79	63	2.79	6	0.18	5	0.10	17	90	3.92
DEC	8	95	85	2.38	7	0.14	5	0.07	12	109	3.16
TOT	12	800	684	2.85	58	0.14	44	0.11	112	897	3.64
AVG	6	73	62	2.58	5	0.14	4	0.12	10	82	3.30
JAN/03	9	112	70	1.90	5	0.12	5	0.10	16	96	2.74
FEB	5	69	39	1.82	4	0.15	7	0.24	13	63	3.46
MAR	8	127	47	1.05	6	0.09	13	0.27	15	82	1.87
APR	13	163	78	1.42	13	0.19	21	0.29	22	134	2.40
MAY	15	163	166	2.89	22	0.29	20	0.23	22	230	3.92
JUN	15	190	115	1.86	12	0.14	17	0.16	26	170	2.62
JUL	18	184	72	1.30	9	0.13	8	0.08	33	122	2.22
AUG	26	295	132	1.40	18	0.15	8	0.05	76	235	2.23
SEP	27	299	113	1.23	18	0.19	14	0.14	48	194	1.93
OCT	30	403	137	1.17	27	0.20	18	0.15	83	264	1.96
NOV	31	412	159	1.26	12	0.09	9	0.07	74	254	1.85
DEC	25	276	90	1.15	6	0.08	6	0.10	44	147	1.73
TOT	42	2,693	1,218	1.45	153	0.15	147	0.14	474	1,992	2.25
AVG	19	224	102	1.54	13	0.15	12	0.16	39	166	2.41
JAN/04	14	207	70	1.00	4	0.05	7	0.11	29	110	1.45
FEB	14	170	23	0.50	4	0.06	4	0.08	19	50	0.88
MAR	12	154	43	0.93	16	0.39	29	0.74	13	100	2.34
APR	18	219	65	0.96	20	0.30	28	0.41	24	137	1.94
MAY	24	369	162	1.39	41	0.29	30	0.21	44	277	2.19
JUN	22	219	123	1.72	14	0.14	10	0.11	33	180	2.40
JUL	7	29	9	0.81	4	0.35	1	0.10	8	22	2.20
AUG	0	—	—	—	—	—	—	—	—	—	—
SEP	0	—	—	—	—	—	—	—	—	—	—
OCT	0	—	—	—	—	—	—	—	—	—	—
NOV	0	—	—	—	—	—	—	—	—	—	—
DEC	0	—	—	—	—	—	—	—	—	—	—
TOT	28	1,367	495	1.16	103	0.22	109	0.25	170	877	1.94
AVG	16	195	71	1.04	15	0.23	16	0.25	24	125	1.91

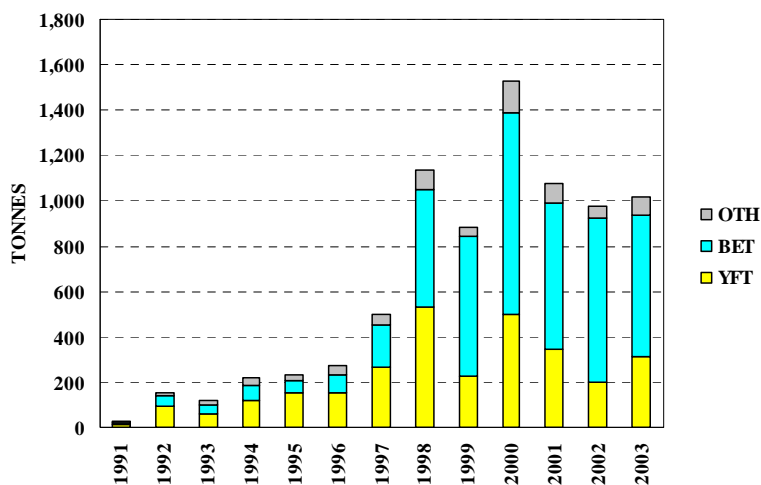
**LONGLINE: FEDERATED STATES OF MICRONESIA**

The statistics in Table 4 were determined from logsheet data held at SPC on 31 December 2004. The coverage rate is 45 per cent for 2002 and 65 per cent for 2003; the statistics in Table 4 have not been raised to represent complete coverage. Figure 14 presents catch rates for bigeye, yellowfin and all species combined. Figure 15 presents estimates of annual catches.



**Figure 14. Federated States of Micronesia longliner catch rates (number of fish per 100 hooks) for bigeye (BET), yellowfin (YFT) and total catch (TOT)**

**Figure 14. Taux de prise (nombre de poissons capturés pour 100 hameçons) de thon obèse (BET), de thon jaune (YFT) et prises totales (TOT) des palangriers des États fédérés de Micronésie**



**Figure 15. Catches (tonnes) of bigeye (BET), yellowfin (YFT) and other species (OTH) by Federated States of Micronesia longliners**

**Figure 15. Prises (en tonnes) de thon obèse (BET), de thon jaune (YFT) et d'autres espèces (OTH) des palangriers des États fédérés de Micronésie**

**Table 4. Catch statistics for Federated States of Micronesia longliners.** Units: Days Covered = days on which hooks were set; Catch = tonnes; CPUE = number of fish per 100 hooks.

**Tableau 4. Statistiques de prise des palangriers des États Fédérés de Micronésie.** Unités : Nbr. de Jours = nombre de jours de mise en place des hameçons; Prises = tonnes; PUE = nombre de poissons capturés pour 100 hameçons mouillés.

MONTH	VESSELS COVERED	DAYS COVERED	ALBACORE		BIGEYE		YELLOWFIN		OTHERS	TOTAL	
			CATCH	CPUE	CATCH	CPUE	CATCH	CPUE		CATCH	CPUE
MOIS	NBR. DE NAVIRES	NBR. DE JOURS	GERMON		THON OBÈSE		THON JAUNE		AUTRES	TOTAL	
			PRISES	PUE	PRISES	PUE	PRISES	PUE		PRISES	PUE
JAN/02	11	157	0	0.00	26	0.33	5	0.08	4	35	0.46
FEB	10	91	0	0.00	14	0.40	7	0.34	3	24	0.83
MAR	9	99	0	0.00	14	0.28	7	0.21	4	25	0.57
APR	1	2	0	0.00	0	0.50	0	0.05	0	1	0.75
MAY	3	41	0	0.00	10	0.52	1	0.11	3	14	0.75
JUN	4	54	0	0.00	6	0.28	2	0.11	2	10	0.47
JUL	15	132	0	0.00	29	0.47	3	0.06	2	35	0.58
AUG	18	281	0	0.00	43	0.32	6	0.06	3	51	0.40
SEP	18	271	0	0.00	52	0.43	11	0.13	3	66	0.58
OCT	16	255	0	0.00	45	0.40	8	0.09	5	58	0.52
NOV	18	275	0	0.00	54	0.41	8	0.08	4	66	0.52
DEC	16	226	0	0.00	38	0.33	13	0.15	3	54	0.51
TOT	22	1,884	0	0.00	332	0.38	71	0.11	35	438	0.53
AVG	12	157	0	0.00	28	0.39	6	0.12	3	37	0.58
JAN/03	16	227	0	0.00	42	0.41	23	0.32	4	69	0.78
FEB	16	215	0	0.00	51	0.58	22	0.34	6	78	1.02
MAR	15	196	0	0.00	41	0.40	19	0.27	11	71	0.88
APR	8	89	0	0.00	17	0.37	13	0.44	2	32	0.85
MAY	8	119	0	0.00	13	0.25	9	0.26	4	26	0.58
JUN	8	131	0	0.00	19	0.31	12	0.34	5	36	0.74
JUL	5	86	0	0.00	15	0.33	5	0.15	4	24	0.56
AUG	16	149	0	0.01	23	0.30	7	0.15	5	35	0.51
SEP	16	252	0	0.00	39	0.29	10	0.11	9	58	0.47
OCT	13	223	0	0.01	34	0.29	12	0.14	13	59	0.58
NOV	14	244	0	0.00	54	0.38	13	0.13	14	81	0.65
DEC	17	273	0	0.00	54	0.38	25	0.24	17	96	0.78
TOT	25	2,204	1	0.00	402	0.36	169	0.22	94	665	0.70
AVG	13	184	0	0.00	33	0.36	14	0.24	8	55	0.70
JAN/04	18	239	0	0.00	50	0.39	16	0.17	14	80	0.70
FEB	12	91	0	0.00	22	0.40	15	0.38	5	42	0.91
MAR	4	99	0	0.00	22	0.29	7	0.14	4	34	0.51
APR	4	87	0	0.00	11	0.17	5	0.11	4	20	0.36
MAY	4	89	0	0.00	19	0.28	6	0.13	3	29	0.48
JUN	4	50	0	0.00	16	0.42	2	0.08	5	23	0.65
JUL	4	91	0	0.00	31	0.46	5	0.11	6	42	0.67
AUG	3	54	0	0.00	20	0.52	4	0.14	3	27	0.75
SEP	4	68	0	0.00	19	0.45	7	0.22	4	31	0.77
OCT	4	68	0	0.00	21	0.46	3	0.10	3	27	0.65
NOV	4	8	0	0.00	2	0.41	0	0.08	1	3	0.62
DEC	0	—	—	—	—	—	—	—	—	—	—
TOT	18	944	0	0.00	233	0.37	72	0.16	51	356	0.64
AVG	6	86	0	0.00	21	0.39	7	0.15	5	32	0.64

### LONGLINE: FIJI ISLANDS

The statistics in Table 5, which cover domestic Fiji Islands longliners and joint-venture longliners, were determined from logsheet data held at SPC on 31 December 2004. The coverage rate is 82 per cent for 2002 and 99 per cent for 2003; the statistics in Table 5 have not been raised to represent complete coverage. Figure 16 presents catch rates for albacore, bigeye, yellowfin and all species combined. Figure 17 presents estimates of annual catches; catches for 1989–1999 have been underestimated; catches of ‘other’ species for 2002 were estimated from observer data, rather than logsheet and unloading data.

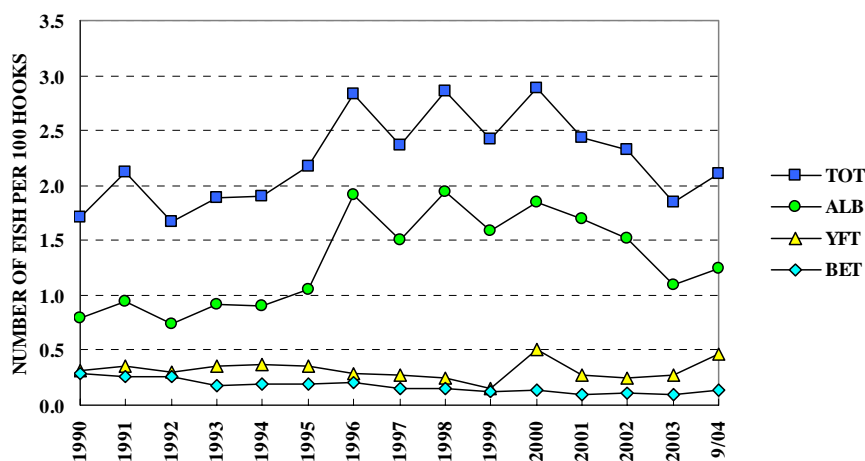


Figure 16. Fijian longliner catch rates (number of fish per 100 hooks) for albacore (ALB), bigeye (BET), yellowfin (YFT) and total catch (TOT)

Figure 16. Taux de prise (nombre de poissons capturés pour 100 hameçons) de germon (ALB), de thon obèse (BET), de thon jaune (YFT) et prises totales (TOT) des palangriers des Îles Fidji

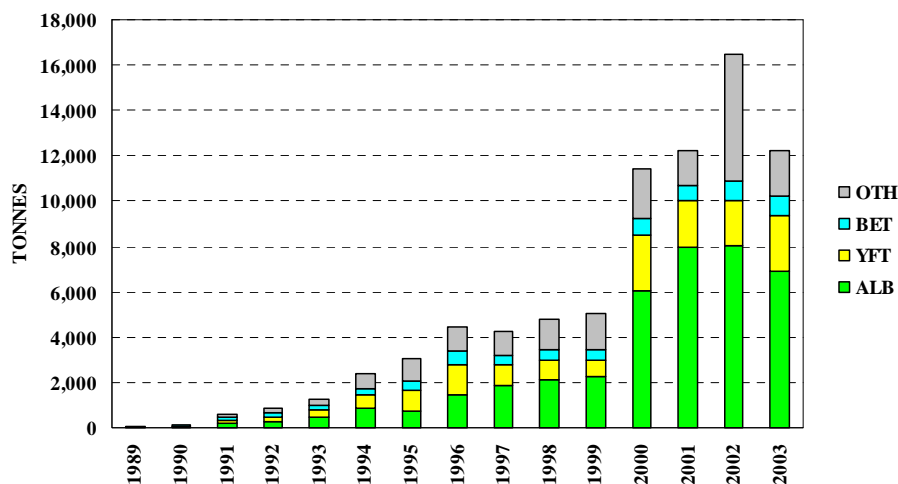


Figure 17. Catches (tonnes) of albacore (ALB), bigeye (BET), yellowfin (YFT) and other species (OTH) by Fijian longliners

Figure 17. Prises (en tonnes) de germon (ALB), de thon obèse (BET), de thon jaune (YFT) et d'autres espèces (OTH) des palangriers des Îles Fidji



**Table 5. Catch statistics for Fiji Islands longliners.** Units: Days Covered = days on which hooks were set; Catch = tonnes; CPUE = number of fish per 100 hooks.

**Tableau 5. Statistiques de prise des palangriers des Îles Fidji.** Unités : Nbr. de Jours = nombre de jours de mise en place des hameçons; Prises = tonnes; PUE = nombre de poissons capturés pour 100 hameçons mouillés.

MONTH	VESSELS COVERED	DAYS COVERED	ALBACORE		BIGEYE		YELLOWFIN		OTHERS	TOTAL	
			CATCH	CPUE	CATCH	CPUE	CATCH	CPUE		CATCH	CPUE
MOIS	NBR. DE NAVIRES	NBR. DE JOURS	GERMON		THON OBÈSE		THON JAUNE		AUTRES	TOTAL	
			PRISES	PUE	PRISES	PUE	PRISES	PUE		PRISES	PUE
JAN/02	83	1,278	549	1.13	49	0.07	102	0.15	192	892	1.80
FEB	67	971	501	1.33	34	0.07	88	0.16	126	749	1.90
MAR	70	1,206	407	0.86	61	0.10	203	0.32	149	820	1.61
APR	74	1,127	795	1.82	65	0.12	194	0.30	120	1,175	2.57
MAY	71	1,247	992	2.04	78	0.12	206	0.27	111	1,387	2.69
JUN	74	1,213	907	2.06	113	0.18	239	0.32	129	1,389	2.98
JUL	91	1,208	885	2.10	104	0.17	202	0.28	124	1,315	2.93
AUG	96	1,415	880	1.77	114	0.14	153	0.19	202	1,349	2.54
SEP	94	1,308	655	1.35	92	0.11	183	0.23	207	1,137	2.34
OCT	94	1,365	676	1.31	73	0.09	195	0.23	193	1,137	2.13
NOV	92	1,317	602	1.24	76	0.10	199	0.24	188	1,064	2.11
DEC	79	1,184	593	1.27	58	0.08	208	0.26	213	1,073	2.28
TOT	126	14,839	8,442	1.52	917	0.11	2,172	0.25	1,955	13,487	2.33
AVG	82	1,237	704	1.52	76	0.11	181	0.25	163	1,124	2.32
JAN/03	91	1,290	460	0.93	46	0.07	229	0.30	146	882	1.83
FEB	86	1,268	302	0.59	58	0.09	209	0.29	119	688	1.33
MAR	84	1,317	276	0.57	73	0.11	203	0.29	123	676	1.37
APR	77	1,097	283	0.65	96	0.18	267	0.46	117	763	1.65
MAY	88	1,425	426	0.75	110	0.16	555	0.72	134	1,225	1.95
JUN	92	1,380	540	0.99	129	0.19	327	0.42	143	1,138	1.97
JUL	86	1,450	816	1.39	75	0.11	159	0.19	149	1,200	2.11
AUG	95	1,579	1,015	1.79	43	0.05	122	0.15	151	1,331	2.41
SEP	87	1,265	495	1.06	79	0.10	67	0.10	110	751	1.57
OCT	86	1,489	710	1.19	69	0.09	89	0.13	150	1,018	1.77
NOV	87	1,621	932	1.41	50	0.06	116	0.16	150	1,249	1.99
DEC	88	1,610	901	1.38	35	0.04	116	0.15	149	1,201	1.91
TOT	119	16,791	7,157	1.09	864	0.10	2,460	0.27	1,643	12,123	1.84
AVG	87	1,399	596	1.06	72	0.10	205	0.28	137	1,010	1.82
JAN/04	87	1,496	680	1.10	46	0.05	123	0.16	113	962	1.59
FEB	71	966	307	0.76	46	0.09	103	0.22	70	526	1.29
MAR	72	1,113	247	0.56	104	0.18	242	0.48	67	661	1.38
APR	73	1,242	355	0.78	118	0.19	438	0.78	74	985	1.92
MAY	81	1,604	442	0.70	119	0.16	294	0.41	104	960	1.49
JUN	84	1,542	1,040	1.78	118	0.16	400	0.60	99	1,658	2.78
JUL	82	1,352	991	1.88	119	0.17	474	0.75	97	1,681	3.13
AUG	79	1,339	950	2.07	80	0.11	217	0.36	179	1,426	2.95
SEP	25	122	78	1.80	2	0.03	19	0.30	13	112	2.47
OCT	0	—	—	—	—	—	—	—	—	—	—
NOV	0	—	—	—	—	—	—	—	—	—	—
DEC	0	—	—	—	—	—	—	—	—	—	—
TOT	100	10,776	5,090	1.24	754	0.14	2,310	0.47	818	8,971	2.10
AVG	73	1,197	566	1.27	84	0.13	257	0.45	91	997	2.11

**LONGLINE: FRENCH POLYNESIA**

The statistics in Table 6 were determined from logsheet data held at SPC on 31 December 2004. Coverage rates are 64 per cent for 2002 and 81 per cent for 2003; the statistics in Table 6 have not been raised to represent complete coverage. Figure 18 presents catch rates for albacore, bigeye, yellowfin and all species combined. Figure 19 presents estimates of annual catches.

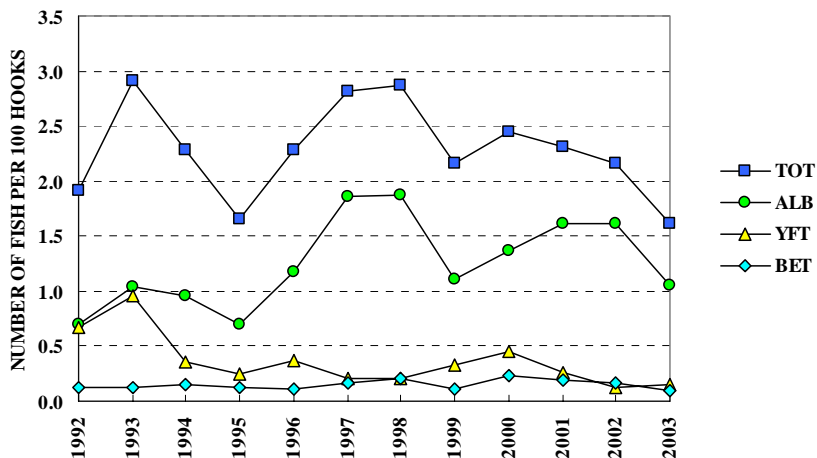


Figure 18. French Polynesian longliner catch rates (number of fish per 100 hooks) for albacore (ALB), bigeye (BET), yellowfin (YFT) and total catch (TOT)

Figure 18. Taux de prise (nombre de poissons capturés pour 100 hameçons) de germon (ALB), de thon obèse (BET), de thon jaune (YFT) et prises totales (TOT) des palangriers de Polynésie française

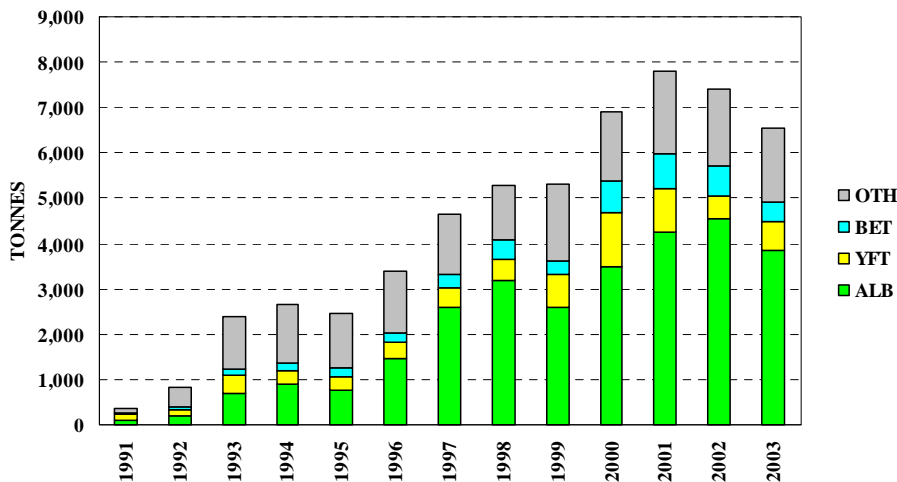


Figure 19. Catches (tonnes) of albacore (ALB), bigeye (BET), yellowfin (YFT) and other species (OTH) by French Polynesian longliners

Figure 19. Prises (en tonnes) de germon (ALB), de thon obèse (BET), de thon jaune (YFT) et d'autres espèces (OTH) des palangriers de Polynésie française

**Table 6. Catch statistics for French Polynesian longliners.** Units: Days Covered = days on which hooks were set; Catch = tonnes; CPUE = number of fish per 100 hooks.

**Tableau 6. Statistiques de prise des palangriers de Polynésie française.** Unités : Nbr. de Jours = nombre de jours de mise en place des hameçons; Prises = tonnes; PUE = nombre de poissons capturés pour 100 hameçons mouillés.

MONTH	VESSELS COVERED	DAYS COVERED	ALBACORE		BIGEYE		YELLOWFIN		OTHERS	TOTAL	
			CATCH	CPUE	CATCH	CPUE	CATCH	CPUE		CATCH	CPUE
MOIS	NBR. DE NAVIRES	NBR. DE JOURS	GERMON		THON OBÈSE		THON JAUNE		AUTRES	TOTAL	
			PRISES	PUE	PRISES	PUE	PRISES	PUE		PRISES	PUE
JAN/01	28	273	142	1.38	29	0.20	63	0.46	35	270	2.25
FEB	33	385	233	1.44	46	0.20	78	0.37	48	404	2.21
MAR	30	393	201	1.29	44	0.20	61	0.34	55	362	2.04
APR	29	310	168	1.31	43	0.24	47	0.30	46	304	2.05
MAY	30	374	264	1.71	54	0.24	80	0.34	50	448	2.50
JUN	26	325	324	2.36	49	0.25	58	0.27	54	485	3.27
JUL	33	415	286	1.56	53	0.22	44	0.18	61	444	2.27
AUG	34	400	276	1.61	53	0.22	41	0.15	75	445	2.38
SEP	35	461	341	1.63	66	0.22	55	0.18	62	523	2.30
OCT	38	413	283	1.62	47	0.18	66	0.26	45	440	2.22
NOV	33	401	293	1.75	31	0.12	42	0.18	48	414	2.25
DEC	30	339	232	1.64	17	0.09	18	0.11	50	317	2.08
TOT	43	4,489	3,042	1.61	533	0.20	654	0.25	628	4,856	2.32
AVG	32	374	253	1.61	44	0.20	54	0.26	52	405	2.32
JAN/02	30	260	172	1.46	21	0.11	19	0.10	32	245	1.87
FEB	33	477	346	1.55	56	0.18	37	0.12	58	497	2.04
MAR	35	445	241	1.18	54	0.21	42	0.16	57	394	1.78
APR	28	355	206	1.30	39	0.19	39	0.17	43	327	1.93
MAY	37	528	478	1.93	58	0.17	72	0.18	73	682	2.55
JUN	34	446	442	2.20	44	0.16	60	0.18	45	591	2.77
JUL	31	372	223	1.37	35	0.15	16	0.07	50	324	1.86
AUG	29	374	261	1.48	32	0.13	15	0.05	62	371	2.00
SEP	28	382	312	1.75	33	0.14	13	0.05	58	415	2.28
OCT	25	305	238	1.84	41	0.22	14	0.07	37	331	2.43
NOV	25	320	249	1.67	31	0.15	23	0.10	46	349	2.17
DEC	24	245	140	1.32	14	0.09	15	0.11	38	206	1.84
TOT	44	4,509	3,309	1.61	460	0.16	365	0.12	597	4,731	2.16
AVG	30	376	276	1.59	38	0.16	30	0.11	50	394	2.13
JAN/03	32	350	267	1.70	32	0.17	58	0.33	53	410	2.57
FEB	43	471	284	1.30	34	0.14	59	0.27	73	449	2.08
MAR	41	603	322	1.11	37	0.11	73	0.25	87	519	1.88
APR	39	448	220	1.12	27	0.11	50	0.21	67	364	1.87
MAY	36	497	291	1.28	33	0.11	69	0.25	90	484	2.16
JUN	41	583	359	1.34	38	0.11	45	0.13	69	512	1.94
JUL	45	612	223	0.81	29	0.09	21	0.06	66	339	1.16
AUG	39	537	206	0.83	19	0.07	12	0.04	55	292	1.19
SEP	46	595	259	0.95	38	0.12	20	0.07	66	384	1.39
OCT	45	575	222	0.84	29	0.08	35	0.12	65	350	1.33
NOV	43	573	243	0.90	13	0.04	32	0.11	93	381	1.34
DEC	43	489	164	0.69	10	0.03	13	0.06	58	245	1.03
TOT	56	6,333	3,061	1.05	340	0.10	488	0.15	842	4,731	1.62
AVG	41	528	255	1.07	28	0.10	41	0.16	70	394	1.66

## LONGLINE: JAPAN

The statistics in Table 7 and Figure 20 cover Japanese offshore and distant-water longliners in the Western and Central Pacific Ocean (Figure 1). All statistics were determined from data provided by the Fisheries Agency of Japan, grouped by 5° longitude, 5° latitude and month. Figure 21 presents estimates of annual catches in the Western and Central Pacific Ocean.

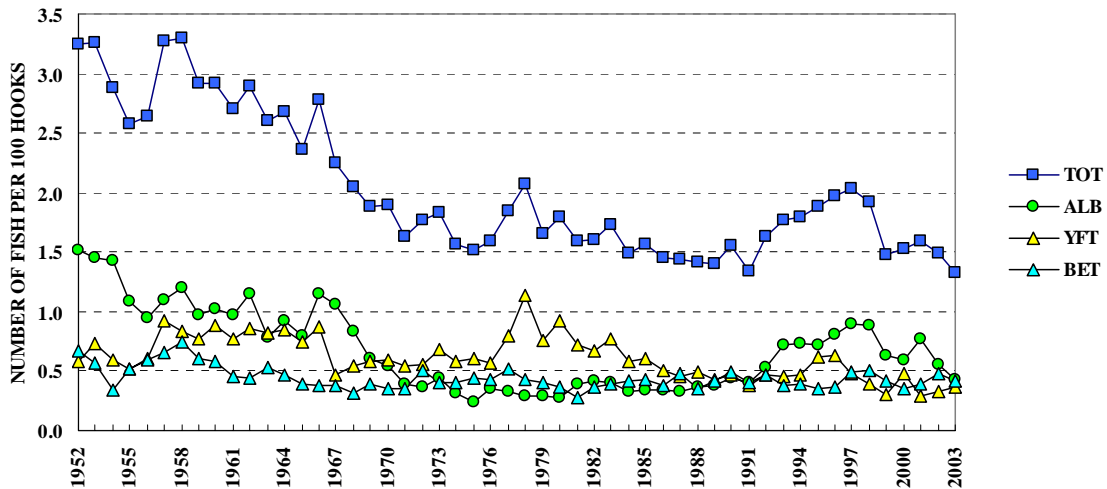


Figure 20. Japanese offshore and distant-water longliner catch rates (number of fish per 100 hooks) for albacore (ALB), bigeye (BET), yellowfin (YFT) and total catch (TOT)

Figure 20. Taux de prise (nombre de poissons capturés pour 100 hameçons) de germon (ALB), de thon obèse (BET), de thon jaune (YFT) et prises totales (TOT) des palangriers du Japon

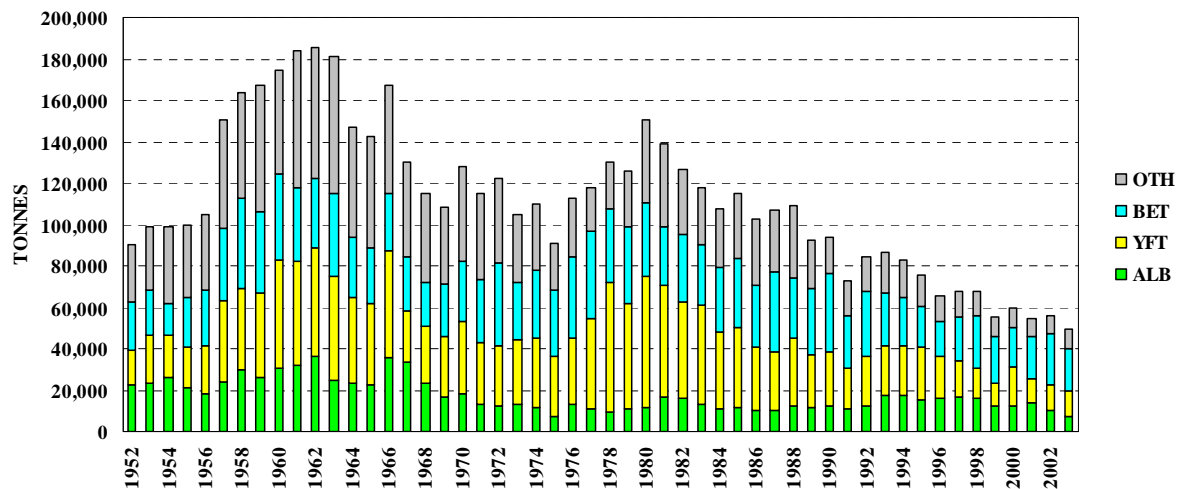


Figure 21. Catches (tonnes) of albacore (ALB), bigeye (BET), yellowfin (YFT) and other species (OTH) by Japanese offshore and distant-water longliners

Figure 21. Prises (en tonnes) de germon (ALB), de thon obèse (BET), de thon jaune (YFT) et d'autres espèces (OTH) des palangriers du Japon

**Table 7. Catch statistics for Japanese offshore and distant-water longliners.** Units: Days Covered = days on which hooks were set; Catch = tonnes; CPUE = number of fish per 100 hooks.

**Tableau 7. Statistiques de prise des palangriers du Japon.** Unités : Nbr. de Jours = nombre de jours de mise en place des hameçons; Prises = tonnes; PUE = nombre de poissons capturés pour 100 hameçons mouillés.

MOIS	NBR. DE NAVIRES	NBR. DE HMEÇONS	GERMON		THON OBÈSE		THON JAUNE		AUTRES	TOTAL	
			PRISES	PUE	PRISES	PUE	PRISES	PUE		PRISES	PUE
JAN/01	...	87,004	2,785	1.23	1,505	0.38	919	0.34	653	5,862	2.16
FEB	...	91,298	1,849	0.78	1,869	0.45	756	0.27	644	5,119	1.64
MAR	...	87,635	984	0.46	1,653	0.40	934	0.35	584	4,155	1.31
APR	...	109,018	1,723	0.72	1,685	0.34	972	0.31	711	5,091	1.49
MAY	...	131,292	2,273	0.79	1,577	0.25	1,065	0.29	1,021	5,936	1.46
JUN	...	114,249	1,452	0.71	1,630	0.28	1,036	0.27	1,142	5,260	1.43
JUL	...	94,394	1,234	0.66	1,662	0.38	1,099	0.35	856	4,852	1.56
AUG	...	74,901	1,079	0.82	1,651	0.50	922	0.42	243	3,895	1.82
SEP	...	81,314	692	0.48	1,327	0.38	548	0.23	432	3,000	1.20
OCT	...	85,879	668	0.43	1,770	0.49	620	0.24	369	3,426	1.24
NOV	...	96,845	1,843	1.01	1,969	0.49	582	0.19	363	4,757	1.78
DEC	...	93,476	2,706	1.20	1,918	0.48	817	0.30	379	5,820	2.07
TOT	...	1,147,304	19,288	0.78	20,217	0.39	10,270	0.29	7,397	57,172	1.59
AVG	...	95,609	1,607	0.77	1,685	0.40	856	0.30	616	4,764	1.60
JAN/02	...	98,641	2,224	0.90	1,924	0.48	499	0.19	479	5,126	1.67
FEB	...	101,833	2,196	0.73	1,867	0.47	704	0.24	641	5,409	1.56
MAR	...	110,155	1,556	0.51	1,960	0.45	916	0.29	660	5,091	1.34
APR	...	124,351	2,095	0.67	2,075	0.41	964	0.29	923	6,057	1.50
MAY	...	139,948	1,848	0.59	1,932	0.34	657	0.18	1,077	5,514	1.24
JUN	...	123,493	1,336	0.50	1,908	0.39	1,058	0.32	1,045	5,348	1.35
JUL	...	107,376	1,284	0.50	1,768	0.45	1,184	0.38	1,168	5,404	1.51
AUG	...	84,266	593	0.37	1,644	0.49	1,330	0.56	317	3,883	1.50
SEP	...	85,295	310	0.16	2,165	0.64	1,571	0.57	375	4,420	1.47
OCT	...	84,829	373	0.27	2,236	0.62	1,076	0.42	651	4,336	1.41
NOV	...	86,845	935	0.62	2,186	0.65	885	0.32	486	4,491	1.67
DEC	...	86,460	1,126	0.77	1,882	0.55	860	0.35	458	4,327	1.82
TOT	...	1,233,492	15,876	0.56	23,546	0.48	11,704	0.33	8,280	59,407	1.49
AVG	...	102,791	1,323	0.55	1,962	0.49	975	0.34	690	4,951	1.50
JAN/03	...	114,217	1,112	0.59	2,204	0.53	911	0.28	876	5,102	1.56
FEB	...	109,336	747	0.40	2,526	0.57	1,114	0.36	803	5,190	1.47
MAR	...	103,679	775	0.29	2,331	0.56	1,072	0.44	616	4,794	1.37
APR	...	114,495	811	0.26	1,924	0.40	1,368	0.51	927	5,029	1.29
MAY	...	129,838	995	0.32	1,769	0.34	1,126	0.37	788	4,678	1.13
JUN	...	124,092	1,404	0.41	1,364	0.27	888	0.30	921	4,576	1.10
JUL	...	126,647	1,354	0.52	1,511	0.31	1,158	0.38	1,083	5,106	1.36
AUG	...	98,536	1,160	0.62	1,479	0.40	1,020	0.42	605	4,264	1.53
SEP	...	99,946	649	0.29	1,195	0.34	710	0.29	357	2,911	1.02
OCT	...	96,827	474	0.23	1,076	0.37	571	0.24	648	2,770	0.98
NOV	...	69,232	866	0.55	1,285	0.53	623	0.40	483	3,257	1.59
DEC	...	47,139	957	1.07	955	0.60	531	0.41	340	2,784	2.19
TOT	...	1,233,983	11,303	0.43	19,619	0.42	11,091	0.36	8,447	50,461	1.33
AVG	...	102,832	942	0.46	1,635	0.44	924	0.37	704	4,205	1.38

**LONGLINE: NEW CALEDONIA**

The statistics in Table 8 were determined from logsheet data held at SPC on 31 December 2004. Coverage rates are 72 per cent for 2002 and 67 per cent for 2003; the statistics in Table 8 have not been raised to represent complete coverage. Figure 22 presents catch rates for albacore, bigeye, yellowfin and all species combined. Figure 23 presents estimates of annual catches.

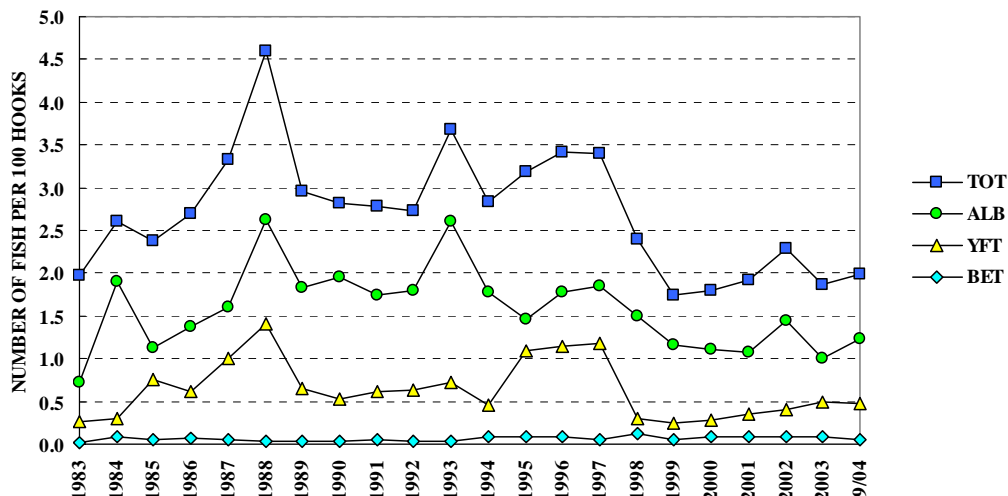


Figure 22. New Caledonian longliner catch rates (number of fish per 100 hooks) for albacore (ALB), bigeye (BET), yellowfin (YFT) and total catch (TOT)

Figure 22. Taux de prise (nombre de poissons capturés pour 100 hameçons) de germon (ALB), de thon obèse (BET), de thon jaune (YFT) et prises totales (TOT) des palangriers de Nouvelle-Calédonie

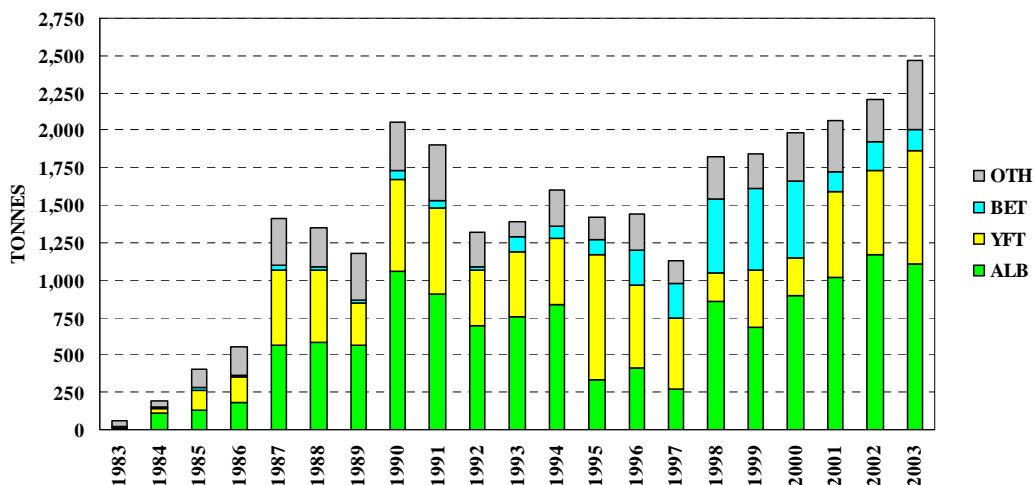


Figure 23. Catches (tonnes) of albacore (ALB), bigeye (BET), yellowfin (YFT) and other species (OTH) by New Caledonian longliners

Figure 23. Prises (en tonnes) de germon (ALB), de thon obèse (BET), de thon jaune (YFT) et d'autres espèces (OTH) des palangriers de Nouvelle-Calédonie

**Table 8. Catch statistics for New Caledonian longliners.** Units: Days Covered = days on which hooks were set; Catch = tonnes; CPUE = number of fish per 100 hooks.

**Tableau 8. Statistiques de prise des palangriers de Nouvelle-Calédonie.** Unités : Nbr. de Jours = nombre de jours de mise en place des hameçons; Prises = tonnes; PUE = nombre de poissons capturés pour 100 hameçons mouillés.

MONTH	VESSELS COVERED	DAYS COVERED	ALBACORE		BIGEYE		YELLOWFIN		OTHERS	TOTAL	
			CATCH	CPUE	CATCH	CPUE	CATCH	CPUE		CATCH	CPUE
MOIS	NBR. DE NAVIRES	NBR. DE JOURS	GERMON		THON OBÈSE		THON JAUNE		AUTRES	TOTAL	
			PRISES	PUE	PRISES	PUE	PRISES	PUE		PRISES	PUE
JAN/02	15	183	121	1.88	11	0.08	24	0.23	30	186	2.79
FEB	14	116	49	1.27	9	0.11	22	0.36	14	95	2.12
MAR	11	111	44	1.11	11	0.14	32	0.52	10	98	2.05
APR	12	141	32	0.66	13	0.13	49	0.67	12	106	1.73
MAY	14	153	51	0.92	11	0.12	58	0.73	19	138	2.08
JUN	13	137	61	1.31	12	0.16	33	0.42	18	124	2.30
JUL	10	143	76	1.43	8	0.08	28	0.39	20	132	2.24
AUG	10	105	76	2.02	3	0.05	14	0.25	13	106	2.57
SEP	14	139	70	1.47	4	0.04	10	0.15	18	102	1.95
OCT	11	134	60	1.22	7	0.07	27	0.38	22	115	2.00
NOV	17	154	104	1.90	5	0.05	28	0.37	27	164	2.64
DEC	19	208	143	1.88	8	0.05	36	0.33	30	216	2.63
TOT	26	1,724	885	1.45	103	0.09	361	0.40	232	1,581	2.29
AVG	13	144	74	1.42	9	0.09	30	0.40	19	132	2.26
JAN/03	15	153	66	1.32	10	0.11	26	0.43	19	120	2.18
FEB	17	172	73	1.29	6	0.06	27	0.38	22	128	2.01
MAR	15	182	32	0.51	12	0.11	46	0.61	28	117	1.52
APR	16	226	41	0.52	19	0.15	58	0.65	29	146	1.61
MAY	16	209	39	0.57	16	0.13	57	0.71	26	138	1.69
JUN	16	222	63	0.84	11	0.09	50	0.61	30	155	1.83
JUL	15	155	51	0.95	5	0.06	34	0.56	22	112	1.87
AUG	14	190	80	1.31	4	0.03	36	0.50	24	144	2.08
SEP	12	165	55	0.98	2	0.02	22	0.33	25	104	1.68
OCT	20	220	77	1.12	4	0.03	38	0.46	29	148	1.90
NOV	23	275	102	1.15	8	0.05	30	0.28	44	184	1.81
DEC	19	200	98	1.69	5	0.05	25	0.33	27	156	2.47
TOT	25	2,369	778	1.00	101	0.08	448	0.49	324	1,651	1.87
AVG	17	197	65	1.02	8	0.07	37	0.49	27	138	1.89
JAN/04	23	275	160	1.67	8	0.05	55	0.49	43	265	2.65
FEB	23	279	122	1.27	7	0.04	68	0.58	31	228	2.14
MAR	24	251	45	0.53	7	0.05	38	0.37	24	113	1.16
APR	22	306	71	0.68	17	0.09	47	0.38	28	164	1.33
MAY	22	285	45	0.48	11	0.06	47	0.43	39	142	1.23
JUN	24	263	140	1.55	13	0.09	39	0.36	36	229	2.23
JUL	24	310	176	1.68	8	0.05	61	0.48	29	274	2.38
AUG	21	318	195	1.96	6	0.03	102	0.81	28	330	2.97
SEP	22	211	62	1.02	4	0.03	23	0.26	23	112	1.53
OCT	0	—	—	—	—	—	—	—	—	—	—
NOV	0	—	—	—	—	—	—	—	—	—	—
DEC	0	—	—	—	—	—	—	—	—	—	—
TOT	26	2,498	1,015	1.23	81	0.06	480	0.47	280	1,856	1.99
AVG	23	278	113	1.20	9	0.05	53	0.46	31	206	1.96

### LONGLINE: PAPUA NEW GUINEA

The statistics in Table 9, which cover Papua New Guinea longliners, were determined from logsheet data held at SPC on 31 December 2004. Coverage rates are 83 per cent for 2001, 87 per cent for 2002 and 75 per cent for 2003; the statistics in Table 9 have not been raised to represent complete coverage. Figure 24 presents catch rates for albacore, bigeye, yellowfin and all species combined. Figure 25 presents estimates of annual catches; estimates for 1998–2002 include shark longliners.

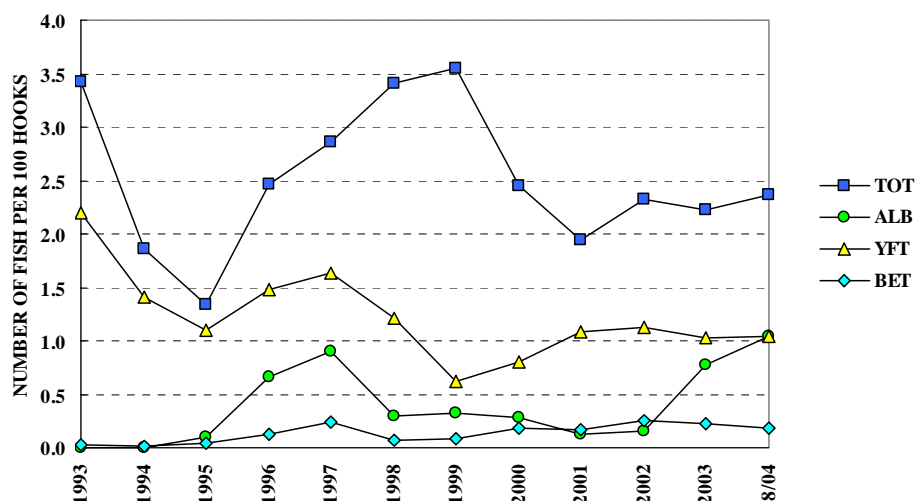


Figure 24. Papua New Guinea longliner catch rates (number of fish per 100 hooks) for albacore (ALB), bigeye (BET), yellowfin (YFT) and total catch (TOT)

Figure 24. Taux de prise (nombre de poissons capturés pour 100 hameçons) de germon (ALB), de thon obèse (BET), de thon jaune (YFT) et prises totales (TOT) des palangriers de Papouasie-Nouvelle-Guinée

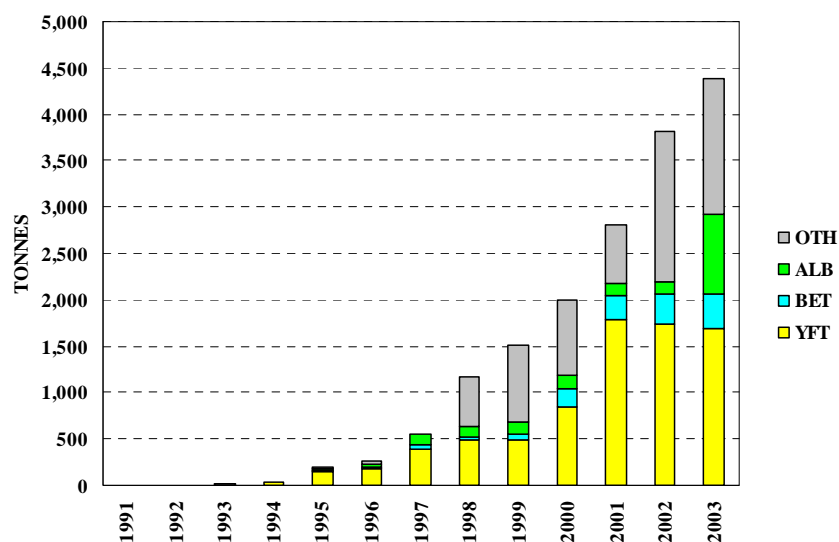


Figure 25. Catches (tonnes) of albacore (ALB), bigeye (BET), yellowfin (YFT) and other species (OTH) by Papua New Guinea longliners

Figure 25. Prises (en tonnes) de thon obèse (BET), de thon jaune (YFT) et d'autres espèces (OTH) des palangriers de Papouasie-Nouvelle-Guinée



**Table 9. Catch statistics for Papua New Guinea longliners.** Units: Days Covered = days on which hooks were set; Catch = tonnes; CPUE = number of fish per 100 hooks.

**Tableau 9. Statistiques de prise des palangriers de Papouasie-Nouvelle-Guinée.** Unités : Nbr. de Jours = nombre de jours de mise en place des hameçons; Prises = tonnes; PUE = nombre de poissons capturés pour 100 hameçons mouillés.

MONTH	VESSELS COVERED	DAYS COVERED	ALBACORE		BIGEYE		YELLOWFIN		OTHERS	TOTAL	
			CATCH	CPUE	CATCH	CPUE	CATCH	CPUE		CATCH	CPUE
MOIS	NBR. DE NAVIRES	NBR. DE JOURS	GERMON		THON OBÈSE		THON JAUNE		AUTRES	TOTAL	
			PRISES	PUE	PRISES	PUE	PRISES	PUE		PRISES	PUE
JAN/02	23	458	2	0.02	27	0.19	108	0.71	63	200	1.36
FEB	23	331	1	0.01	43	0.45	88	0.84	66	197	1.96
MAR	25	489	12	0.13	53	0.53	195	1.46	81	341	2.69
APR	27	413	7	0.09	26	0.26	128	1.05	71	232	1.99
MAY	32	533	22	0.22	19	0.15	137	0.89	222	399	2.66
JUN	29	421	23	0.35	17	0.17	118	1.02	158	316	2.79
JUL	24	510	10	0.10	28	0.25	165	1.17	187	390	2.81
AUG	26	503	14	0.20	21	0.18	125	0.92	159	318	2.46
SEP	26	450	20	0.25	24	0.24	122	0.97	99	265	2.21
OCT	24	436	17	0.23	17	0.16	187	1.46	87	308	2.53
NOV	20	359	4	0.06	14	0.18	156	1.65	20	194	2.07
DEC	20	343	6	0.08	18	0.22	138	1.53	16	178	1.99
TOT	41	5,246	136	0.15	306	0.25	1,667	1.12	1,229	3,339	2.32
AVG	25	437	11	0.15	25	0.25	139	1.14	102	278	2.29
JAN/03	24	437	11	0.12	36	0.32	155	1.28	37	239	2.01
FEB	23	341	13	0.22	19	0.22	99	1.09	27	158	1.79
MAR	33	380	35	0.50	16	0.16	85	0.82	26	162	1.70
APR	31	507	104	1.18	32	0.23	136	1.05	42	315	2.74
MAY	34	506	114	1.21	28	0.20	169	1.23	32	344	2.81
JUN	32	545	144	1.36	40	0.27	161	1.02	31	376	2.83
JUL	32	516	93	0.89	35	0.22	165	1.16	26	319	2.44
AUG	30	561	67	0.65	38	0.25	148	0.95	28	281	2.05
SEP	30	531	47	0.52	34	0.22	142	0.94	33	256	1.90
OCT	32	481	42	0.44	24	0.16	167	1.19	21	254	1.94
NOV	30	519	123	1.11	42	0.22	157	0.99	27	349	2.45
DEC	25	433	64	0.66	31	0.19	102	0.68	22	220	1.64
TOT	42	5,757	857	0.78	377	0.22	1,686	1.03	352	3,272	2.22
AVG	30	480	71	0.74	31	0.22	140	1.03	29	273	2.19
JAN/04	23	422	11	0.12	27	0.15	132	0.76	25	194	1.15
FEB	15	151	19	0.57	13	0.19	51	0.81	6	88	1.64
MAR	6	75	36	2.00	3	0.10	35	1.34	6	80	3.59
APR	11	151	57	1.63	11	0.17	64	1.28	9	141	3.19
MAY	23	382	74	0.75	37	0.22	166	1.17	16	293	2.24
JUN	25	382	177	1.78	29	0.18	177	1.27	12	394	3.32
JUL	18	234	93	1.49	27	0.28	73	0.85	6	199	2.69
AUG	1	3	1	1.02	0	0.02	1	1.05	0	2	2.14
SEP	0	—	—	—	—	—	—	—	—	—	—
OCT	0	—	—	—	—	—	—	—	—	—	—
NOV	0	—	—	—	—	—	—	—	—	—	—
DEC	0	—	—	—	—	—	—	—	—	—	—
TOT	33	1,800	467	1.04	148	0.19	697	1.04	80	1,391	2.37
AVG	15	225	58	1.17	18	0.16	87	1.07	10	174	2.50

### LONGLINE: SAMOA

The statistics in Table 10, which cover Samoan longliners, were determined from logsheet data held at SPC on 31 December 2004. Coverage rates are 40 per cent for 2001, 50 per cent for 2002 and 61 per cent for 2003; the statistics in Table 10 have not been raised to represent complete coverage. Figure 26 presents catch rates for albacore, bigeye, yellowfin and all species combined. Figure 27 presents estimates of annual catches.

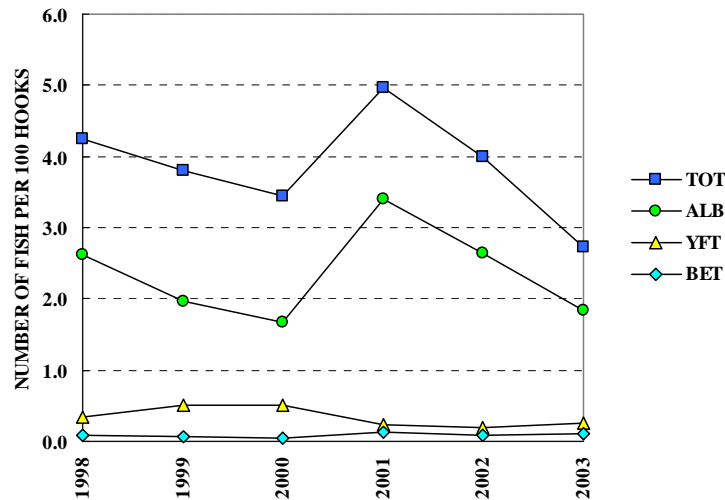


Figure 26. Samoan longliner catch rates (number of fish per 100 hooks) for albacore (ALB), bigeye (BET), yellowfin (YFT) and total catch (TOT)

Figure 26. Taux de prise (nombre de poissons capturés pour 100 hameçons) de germon (ALB), de thon obèse (BET), de thon jaune (YFT) et prises totales (TOT) des palangriers de Samoa

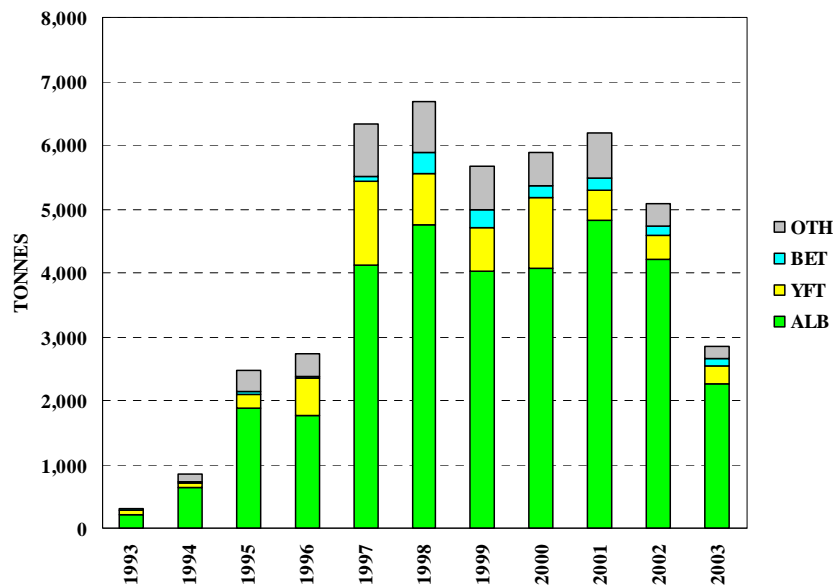


Figure 27. Catches (tonnes) of albacore (ALB), bigeye (BET), yellowfin (YFT) and other species (OTH) by Samoan longliners

Figure 27. Prises (en tonnes) de thon obèse (BET), de thon jaune (YFT) et d'autres espèces (OTH) des palangriers de Samoa

**Table 10. Catch statistics for Samoan longliners.** Units: Days Covered = days on which hooks were set; Catch = tonnes; CPUE = number of fish per 100 hooks.

**Tableau 10. Statistiques de prise des palangriers de Samoa.** Unités : Nbr. de Jours = nombre de jours de mise en place des hameçons; Prises = tonnes; PUE = nombre de poissons capturés pour 100 hameçons mouillés.

MONTH	VESSELS COVERED	DAYS COVERED	ALBACORE		BIGEYE		YELLOWFIN		OTHERS	TOTAL	
			CATCH	CPUE	CATCH	CPUE	CATCH	CPUE		CATCH	CPUE
MOIS	NBR. DE NAVIRES	NBR. DE JOURS	GERMON		THON OBÈSE		THON JAUNE		AUTRES	TOTAL	
			PRISES	PUE	PRISES	PUE	PRISES	PUE		PRISES	PUE
JAN/01	7	96	81	3.36	4	0.14	7	0.24	17	109	4.64
FEB	12	97	80	3.76	5	0.16	7	0.27	17	109	5.20
MAR	21	103	65	3.41	3	0.09	7	0.27	9	83	4.45
APR	10	86	53	2.57	6	0.18	10	0.29	10	79	3.63
MAY	22	169	192	5.24	10	0.20	26	0.54	16	244	6.62
JUN	26	203	226	4.95	7	0.12	28	0.45	25	286	6.69
JUL	29	246	196	3.33	9	0.11	22	0.25	39	266	5.26
AUG	34	271	227	3.74	7	0.10	14	0.18	45	293	5.81
SEP	32	251	178	3.13	6	0.08	12	0.14	36	232	4.82
OCT	25	271	235	3.50	8	0.12	16	0.19	44	304	5.11
NOV	27	283	179	2.54	13	0.17	10	0.11	45	247	3.84
DEC	25	264	155	2.28	8	0.10	12	0.13	49	224	3.60
TOT	97	2,340	1,867	3.39	85	0.12	170	0.23	353	2,475	4.96
AVG	23	195	156	3.48	7	0.13	14	0.26	29	206	4.97
JAN/02	20	259	99	1.43	4	0.05	10	0.09	45	159	2.46
FEB	16	257	114	1.54	8	0.09	11	0.10	38	170	2.32
MAR	23	280	207	2.70	9	0.10	23	0.21	48	287	4.10
APR	32	269	214	3.08	12	0.12	21	0.21	28	276	4.14
MAY	48	371	295	4.51	10	0.12	24	0.31	24	354	5.85
JUN	48	263	214	4.21	8	0.12	21	0.33	21	265	5.51
JUL	37	230	171	2.99	9	0.13	17	0.26	28	225	4.46
AUG	45	310	140	2.76	5	0.05	15	0.21	27	187	4.44
SEP	43	324	139	2.48	6	0.06	14	0.15	34	193	4.08
OCT	42	273	106	2.02	4	0.06	12	0.18	38	161	3.65
NOV	27	247	114	1.85	9	0.09	12	0.16	33	168	3.35
DEC	20	131	72	2.52	6	0.11	11	0.28	22	111	4.36
TOT	79	3,214	1,885	2.65	90	0.09	192	0.20	387	2,555	4.00
AVG	33	268	157	2.67	8	0.09	16	0.21	32	213	4.06
JAN/03	12	76	33	1.73	4	0.18	5	0.28	23	65	3.98
FEB	12	101	45	1.16	2	0.04	4	0.13	16	68	2.50
MAR	13	171	56	0.79	4	0.05	10	0.16	50	121	1.37
APR	13	149	70	1.36	5	0.08	15	0.32	36	126	2.11
MAY	17	147	103	2.04	9	0.15	25	0.54	42	179	3.14
JUN	21	169	117	2.25	7	0.12	18	0.38	47	189	3.20
JUL	30	194	99	2.06	7	0.13	13	0.29	63	182	3.14
AUG	28	235	108	1.66	8	0.10	11	0.19	69	196	2.48
SEP	30	262	151	2.36	8	0.11	12	0.20	74	245	3.25
OCT	26	234	138	2.35	7	0.10	8	0.14	42	194	2.94
NOV	32	253	120	2.51	6	0.11	6	0.15	35	168	3.13
DEC	9	32	10	1.54	1	0.10	2	0.27	5	17	2.30
TOT	51	2,023	1,050	1.83	68	0.10	129	0.25	502	1,749	2.73
AVG	20	169	87	1.82	6	0.11	11	0.25	42	146	2.80

### LONGLINE: CHINESE TAIPEI OFFSHORE FLEET, EAST OF 130°E

The statistics in Table 11, which cover the Chinese Taipei offshore longliners fishing in the Western and Central Pacific Ocean (Figure 1), east of 130°E, were determined from logsheet data held at SPC on 31 December 2004. The coverage rate is 14 per cent for 2002 and 41 per cent for 2003; the statistics in Table 11 have not been raised to represent complete coverage. Figure 28 presents catch rates for bigeye, yellowfin and all species combined. The catch rates were determined from logsheet data held at SPC. Figure 29 presents estimates of annual catches by offshore vessels east of 130°E; catches of 'other' species are not included for most years.

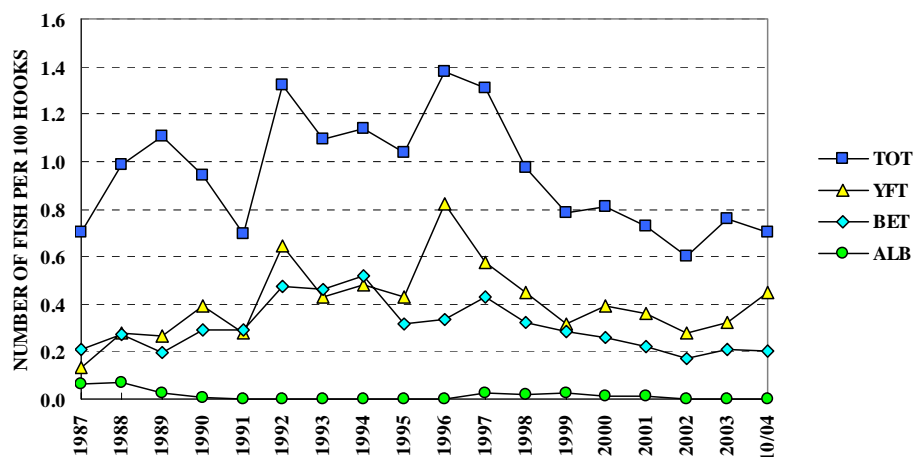


Figure 28. Chinese Taipei offshore longliner catch rates (number of fish per 100 hooks) for bigeye (BET), yellowfin (YFT) and total catch (TOT), east of 130°E

Figure 28. Taux de prise (nombre de poissons capturés pour 100 hameçons) de thon obèse (BET), de thon jaune (YFT) et prises totales (TOT) des palangriers de Taïwan pêchant au large à l'est de 130°E

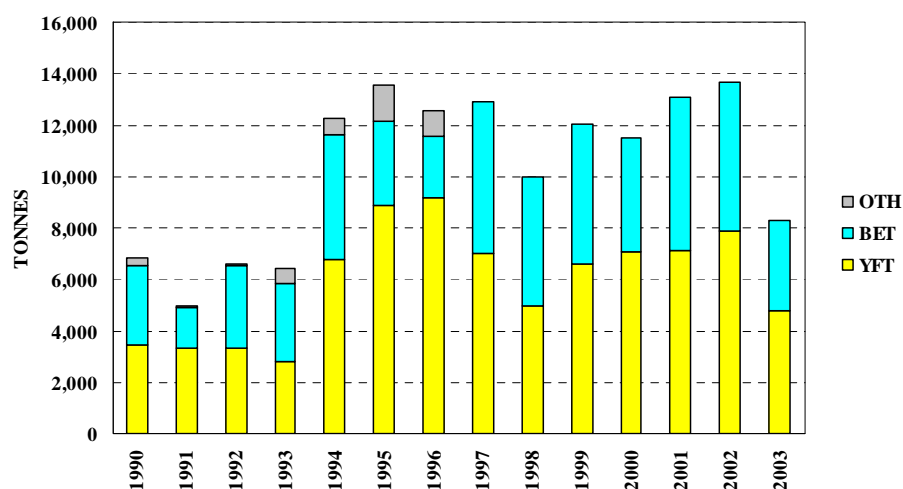


Figure 29. Catches (tonnes) of bigeye (BET), yellowfin (YFT) and other species (OTH) by Chinese Taipei offshore longliners, east of 130°E

Figure 29. Prises (en tonnes) de thon obèse (BET), de thon jaune (YFT) et d'autres espèces (OTH) des palangriers de Taïwan pêchant au large, à l'est de 130°E

**Table 11. Catch statistics for Chinese Taipei offshore longliners, east of 130°E.** Units: Days Covered = days on which hooks were set; Catch = tonnes; CPUE = number of fish per 100 hooks.

**Tableau 11. Statistiques de prise des palangriers de Taïwan pêchant au large, à l'est de 130°E.** Unités : Nbr. de Jours = nombre de jours de mise en place des hameçons; Prises = tonnes; PUE = nombre de poissons capturés pour 100 hameçons mouillés.

MONTH	VESSELS COVERED	DAYS COVERED	ALBACORE		BIGEYE		YELLOWFIN		OTHERS	TOTAL	
			CATCH	CPUE	CATCH	CPUE	CATCH	CPUE		CATCH	CPUE
MOIS	NBR. DE NAVIRES	NBR. DE JOURS	GERMON		THON OBÈSE		THON JAUNE		AUTRES	TOTAL	
			PRISES	PUE	PRISES	PUE	PRISES	PUE		PRISES	PUE
JAN/02	35	380	0	0.00	19	0.08	44	0.23	25	88	0.45
FEB	24	299	0	0.00	21	0.10	39	0.25	24	84	0.53
MAR	26	305	0	0.00	25	0.13	58	0.40	16	99	0.67
APR	17	194	0	0.00	21	0.13	40	0.36	13	74	0.66
MAY	18	217	0	0.00	25	0.20	42	0.44	10	78	0.73
JUN	31	310	0	0.00	32	0.18	29	0.23	16	77	0.54
JUL	49	639	0	0.00	89	0.25	62	0.24	44	194	0.64
AUG	67	910	0	0.00	117	0.21	85	0.21	63	264	0.57
SEP	69	804	0	0.00	82	0.18	94	0.30	54	230	0.64
OCT	71	967	1	0.00	122	0.22	95	0.23	65	284	0.59
NOV	72	829	0	0.00	79	0.16	85	0.23	65	229	0.57
DEC	66	772	0	0.00	55	0.13	145	0.41	37	237	0.66
TOT	125	6,626	1	0.00	687	0.17	818	0.28	432	1,937	0.60
AVG	45	552	0	0.00	57	0.16	68	0.29	36	161	0.60
JAN/03	50	691	0	0.00	88	0.26	161	0.60	47	296	1.03
FEB	38	407	3	0.03	35	0.17	40	0.22	39	116	0.62
MAR	40	514	3	0.01	45	0.17	58	0.29	47	152	0.69
APR	57	711	0	0.00	87	0.23	113	0.39	101	301	0.97
MAY	57	756	0	0.00	69	0.17	125	0.43	131	324	1.06
JUN	60	852	0	0.00	123	0.26	121	0.37	147	392	1.07
JUL	91	1,328	1	0.00	181	0.22	158	0.27	157	497	0.73
AUG	101	1,361	2	0.00	182	0.22	148	0.25	134	466	0.68
SEP	67	831	0	0.00	129	0.27	81	0.23	51	261	0.63
OCT	41	496	0	0.00	61	0.21	58	0.27	27	147	0.59
NOV	55	730	0	0.00	79	0.16	97	0.27	39	216	0.53
DEC	69	871	1	0.00	71	0.14	117	0.31	44	233	0.58
TOT	147	9,548	11	0.00	1,151	0.21	1,276	0.32	965	3,402	0.76
AVG	61	796	1	0.00	96	0.21	106	0.33	80	284	0.77
JAN/04	53	638	0	0.00	55	0.16	71	0.26	29	155	0.55
FEB	36	378	0	0.00	19	0.10	74	0.50	7	101	0.63
MAR	39	516	0	0.00	81	0.28	71	0.33	10	162	0.65
APR	38	378	0	0.00	57	0.26	60	0.40	6	124	0.69
MAY	27	367	0	0.00	33	0.15	110	0.73	7	151	0.92
JUN	16	160	0	0.00	8	0.09	56	0.95	3	66	1.07
JUL	1	26	0	0.00	7	0.48	2	0.25	3	13	0.97
AUG	1	11	0	0.00	3	0.47	2	0.40	1	6	1.08
SEP	1	22	0	0.00	5	0.44	2	0.25	2	9	0.84
OCT	1	11	0	0.00	2	0.40	1	0.27	1	4	0.78
NOV	0	—	—	—	—	—	—	—	—	—	—
DEC	0	—	—	—	—	—	—	—	—	—	—
TOT	72	2,507	1	0.00	271	0.20	449	0.45	69	791	0.70
AVG	21	251	0	0.00	27	0.28	45	0.43	7	79	0.82

**LONGLINE: CHINESE TAIPEI DISTANT-WATER FLEET**

The statistics in Table 12 and Figure 30, which cover distant-water Chinese Taipei longliners fishing in the Western and Central Pacific Ocean (Figure 1), were determined from data provided by the Overseas Fisheries Development Council, grouped by 5° longitude, 5° latitude and month. Figure 31 presents estimates of annual catches by distant-water Chinese Taipei longliners in the Western and Central Pacific Ocean.

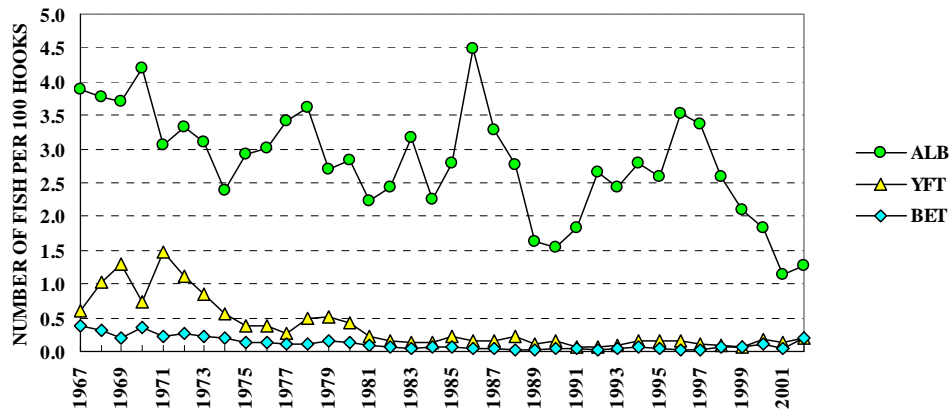


Figure 30. Chinese Taipei distant-water longliner catch rates (number of fish per 100 hooks) for albacore (ALB), bigeye (BET) and yellowfin (YFT)

Figure 30. Taux de prise (nombre de poissons capturés pour 100 hameçons) de germon (ALB), de thon obèse (BET) et de thon jaune (YFT) des palangriers hauturiers de Taïwan

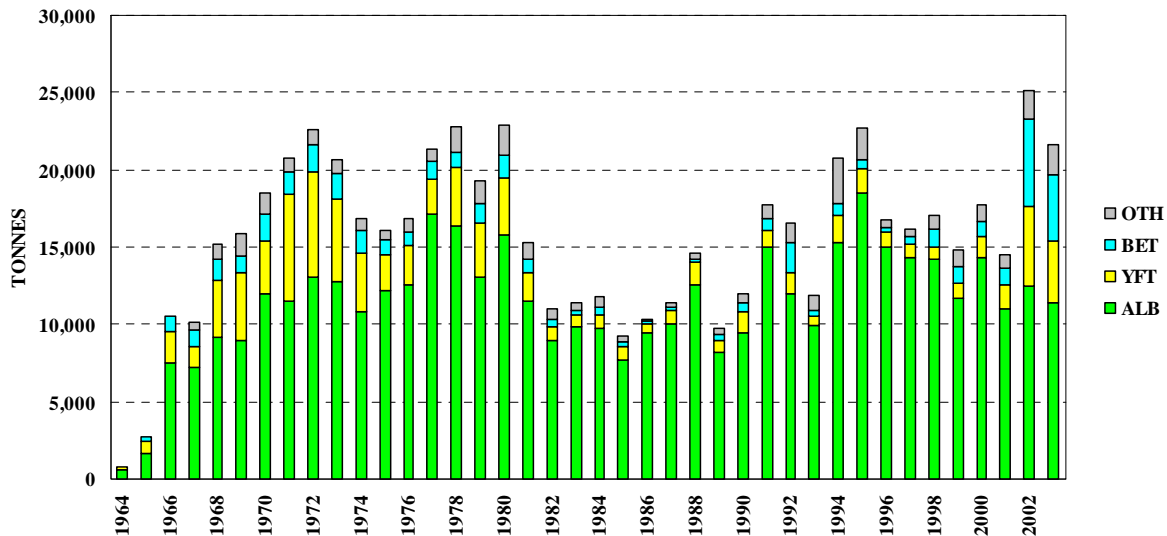


Figure 31. Catches (tonnes) of albacore (ALB), bigeye (BET), yellowfin (YFT) and other species (OTH) by Chinese Taipei distant-water longliners

Figure 31. Prises (en tonnes) de germon (ALB), de thon obèse (BET), de thon jaune (YFT) et d'autres espèces (OTH) des palangriers hauturiers de Taïwan

**Table 12. Catch statistics for Chinese Taipei distant-water longliners.** Units: Days Covered = days on which hooks were set; Catch = tonnes; CPUE = number of fish per 100 hooks.

**Tableau 12. Statistiques de prise des palangriers hauturiers de Taïwan.** Unités : Nbr. de Jours = nombre de jours de mise en place des hameçons; Prises = tonnes; PUE = nombre de poissons capturés pour 100 hameçons mouillés.

MONTH	VESSELS	HOOKS	ALBACORE		BIGEYE		YELLOWFIN		OTHERS	TOTAL	
			CATCH	CPUE	CATCH	CPUE	CATCH	CPUE		CATCH	CPUE
MOIS	NBR. DE NAVIRES	NBR. DE HMEÇONS	GERMON		THON OBÈSE		THON JAUNE		AUTRES	TOTAL	
			PRISES	PUE	PRISES	PUE	PRISES	PUE		PRISES	PUE
JAN/00	...	55,397	1,565	2.12	156	0.07	63	0.04	208	1,992	2.49
FEB	...	50,367	1,171	1.74	74	0.05	115	0.08	167	1,527	2.06
MAR	...	46,787	939	1.51	224	0.15	246	0.21	275	1,684	2.14
APR	...	35,584	834	1.43	270	0.18	268	0.29	135	1,507	2.07
MAY	...	41,710	999	1.90	337	0.22	455	0.37	200	1,991	2.63
JUN	...	61,388	2,006	2.27	277	0.14	526	0.31	238	3,048	2.93
JUL	...	65,587	1,976	2.13	257	0.12	346	0.19	169	2,749	2.62
AUG	...	60,676	1,496	1.92	269	0.13	300	0.21	534	2,599	2.55
SEP	...	33,030	762	1.63	191	0.17	132	0.15	359	1,444	2.38
OCT	...	41,901	1,106	1.88	129	0.08	102	0.09	724	2,061	2.52
NOV	...	37,885	1,029	1.62	112	0.06	108	0.08	115	1,364	1.89
DEC	...	49,373	1,138	1.33	211	0.10	143	0.08	104	1,596	1.56
TOT	...	579,684	15,021	1.83	2,509	0.12	2,806	0.18	3,227	23,563	2.35
AVG	...	48,307	1,252	1.79	209	0.12	234	0.18	269	1,964	2.32
JAN/01	...	69,125	1,414	1.17	58	0.03	164	0.08	229	1,866	1.58
FEB	...	67,997	1,223	1.07	157	0.06	199	0.09	355	1,934	1.49
MAR	...	67,268	818	0.70	139	0.06	446	0.20	555	1,958	1.32
APR	...	47,283	621	0.75	245	0.12	243	0.15	602	1,711	1.53
MAY	...	49,953	837	0.94	251	0.11	203	0.12	587	1,879	1.47
JUN	...	61,638	1,369	1.35	188	0.08	156	0.08	689	2,402	1.95
JUL	...	55,970	1,583	1.80	91	0.04	161	0.10	730	2,565	2.44
AUG	...	54,765	1,813	2.17	25	0.01	185	0.11	530	2,553	2.74
SEP	...	34,909	426	0.89	11	0.01	217	0.19	562	1,216	1.81
OCT	...	22,793	208	0.49	6	0.01	177	0.25	497	888	1.77
NOV	...	17,859	70	0.16	10	0.02	107	0.19	272	459	1.08
DEC	...	9,911	98	0.55	0	0.00	14	0.04	131	243	1.43
TOT	...	559,471	10,481	1.14	1,181	0.06	2,274	0.13	5,739	19,675	1.77
AVG	...	46,623	873	1.00	98	0.05	189	0.13	478	1,640	1.72
JAN/02	...	42,629	631	1.08	139	0.08	164	0.13	192	1,125	1.39
FEB	...	46,164	726	1.04	80	0.05	292	0.18	174	1,272	1.42
MAR	...	37,019	290	0.50	253	0.17	298	0.23	229	1,070	1.10
APR	...	49,950	606	0.88	553	0.26	332	0.19	364	1,856	1.54
MAY	...	77,284	1,558	1.36	384	0.12	332	0.12	469	2,744	1.79
JUN	...	120,257	3,151	1.84	518	0.11	507	0.14	605	4,780	2.27
JUL	...	117,108	2,501	1.64	1,191	0.25	696	0.22	760	5,148	2.31
AUG	...	89,607	1,823	1.45	914	0.26	525	0.21	637	3,899	2.16
SEP	...	45,049	462	0.75	690	0.39	332	0.30	574	2,058	1.85
OCT	...	45,998	666	0.86	652	0.36	368	0.31	565	2,250	1.91
NOV	...	31,271	316	0.65	534	0.43	370	0.40	369	1,589	1.85
DEC	...	10,485	118	0.63	164	0.46	42	0.12	108	433	1.44
TOT	...	712,820	12,850	1.27	6,071	0.21	4,256	0.20	5,047	28,224	1.91
AVG	...	59,402	1,071	1.06	506	0.24	355	0.21	421	2,352	1.75

### POLE-AND-LINE: JAPAN

The statistics in Table 13 and Figure 32 cover Japanese distant-water pole-and-line vessels in the Western and Central Pacific Ocean (Figure 1). All statistics were determined from data provided by the Fisheries Agency of Japan, grouped by 1° longitude, 1° latitude and month. Figure 33 presents estimates of annual catches in the Western and Central Pacific Ocean.

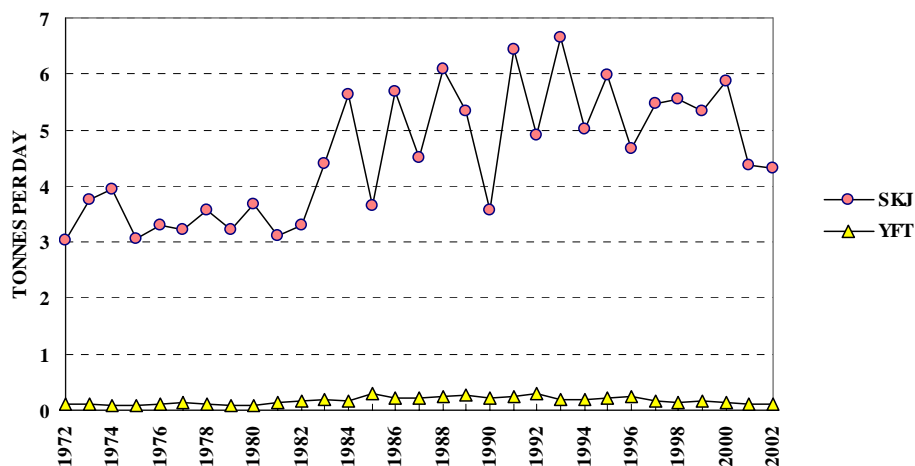


Figure 32. Japanese pole-and-line catch rates (tonnes per day fished or searched) for skipjack (SKJ) and yellowfin (YFT)

Figure 32. Taux de prise (nombre de tonnes par jour de pêche ou de recherche du poisson) de bonite (SKJ) et de thon jaune (YFT) des canneurs du Japon

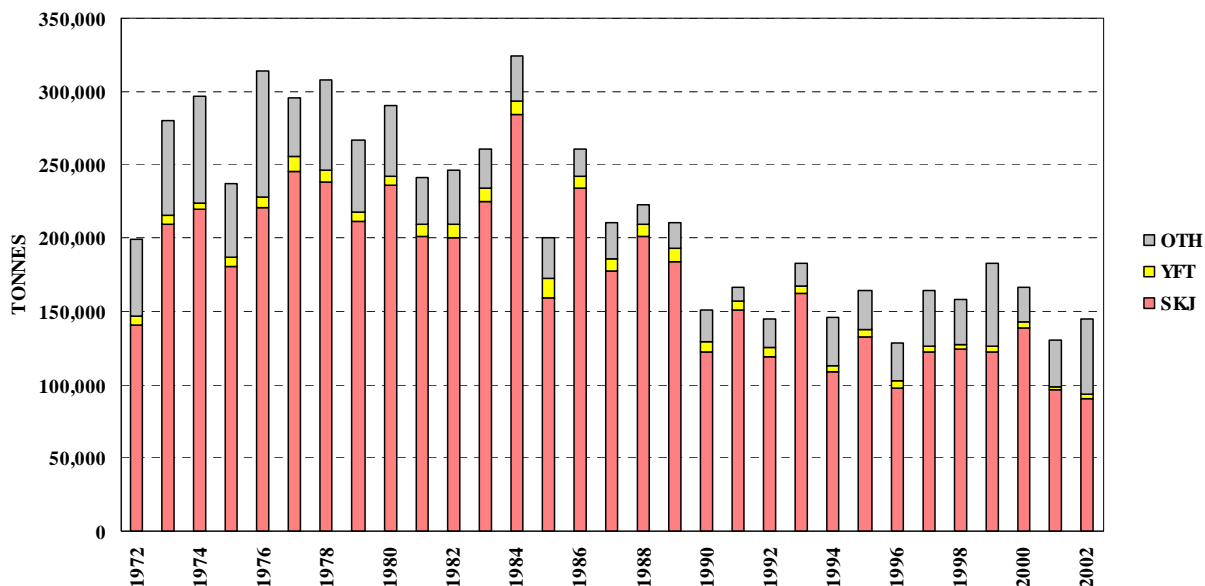


Figure 33. Catches (tonnes) of skipjack (SKJ), yellowfin (YFT) and other species (OTH) by Japanese pole-and-line vessels in the Western and Central Pacific Ocean

Figure 33. Prises (en tonnes) de bonite (SKJ), de thon jaune (YFT) et d'autres espèces (OTH) des canneurs du Japon dans le Pacifique occidental et central



**Table 13. Catch statistics for Japanese pole-and-line vessels in the Western and Central Pacific Ocean.** Units: Days = days fished or searched; Catch = tonnes; CPUE = tonnes per day fished or searched.

**Tableau 13. Statistiques de prise des canneurs du Japon dans le Pacifique occidental et central.** Unités : Nbr de Jours = nombre de jours de pêche ou de recherche du poisson; Prises = tonnes; PUE = nombre de tonnes par jour de pêche ou de recherche du poisson.

MONTH	VESSELS	DAYS	SKIPJACK			YELLOWFIN			OTHERS	TOTAL	
			CATCH	CPUE	%	CATCH	CPUE	%	CATCH	CATCH	CPUE
MOIS	NBR. DE NAVIRES	NBR. DE JOURS	BONITE			THON JAUNE			AUTRES	TOTAL	
			PRISES	PUE	%	PRISES	PUE	%	PRISES	PRISES	PUE
JAN/00	...	460	2,840	6.17	94	149	0.32	5	27	3,016	6.56
FEB	...	1,294	4,719	3.65	90	457	0.35	9	45	5,221	4.03
MAR	...	2,404	9,757	4.06	95	473	0.20	5	51	10,280	4.28
APR	...	2,417	11,179	4.63	94	617	0.26	5	76	11,872	4.91
MAY	...	2,668	20,852	7.82	94	533	0.20	2	848	22,234	8.33
JUN	...	2,497	13,141	5.26	70	320	0.13	2	5,273	18,734	7.50
JUL	...	2,465	17,933	7.27	75	218	0.09	1	5,674	23,824	9.66
AUG	...	2,030	10,479	5.16	75	121	0.06	1	3,428	14,027	6.91
SEP	...	2,176	16,796	7.72	76	132	0.06	1	5,232	22,160	10.18
OCT	...	2,421	19,402	8.01	98	158	0.07	1	258	19,818	8.19
NOV	...	1,781	7,626	4.28	95	183	0.10	2	195	8,004	4.49
DEC	...	980	4,138	4.22	82	114	0.12	2	779	5,031	5.13
TOT	...	23,593	138,860	5.89	85	3,475	0.15	2	21,885	164,219	6.96
AVG	...	1,966	11,572	5.69	87	290	0.16	3	1,824	13,685	6.68
JAN/01	...	367	1,278	3.48	85	224	0.61	15	3	1,505	4.10
FEB	...	1,271	5,644	4.44	92	454	0.36	7	31	6,129	4.82
MAR	...	1,893	8,278	4.37	94	493	0.26	6	53	8,824	4.66
APR	...	2,267	10,905	4.81	97	331	0.15	3	41	11,276	4.97
MAY	...	2,513	11,690	4.65	85	284	0.11	2	1,758	13,733	5.46
JUN	...	2,652	11,386	4.29	59	157	0.06	1	7,756	19,299	7.28
JUL	...	2,405	7,282	3.03	43	208	0.09	1	9,380	16,870	7.01
AUG	...	1,828	9,403	5.14	56	110	0.06	1	7,385	16,897	9.24
SEP	...	2,188	8,803	4.02	73	70	0.03	1	3,258	12,130	5.54
OCT	...	2,057	7,921	3.85	91	108	0.05	1	711	8,739	4.25
NOV	...	1,686	7,474	4.43	99	97	0.06	1	10	7,581	4.50
DEC	...	916	6,076	6.63	98	78	0.08	1	31	6,185	6.75
TOT	...	22,043	96,139	4.36	74	2,612	0.12	2	30,416	129,167	5.86
AVG	...	1,837	8,012	4.43	81	218	0.16	3	2,535	10,764	5.72
JAN/02	...	474	2,973	6.27	96	104	0.22	3	12	3,089	6.52
FEB	...	1,332	7,194	5.40	96	316	0.24	4	22	7,533	5.66
MAR	...	1,971	8,851	4.49	96	283	0.14	3	89	9,223	4.68
APR	...	2,284	12,632	5.53	92	377	0.17	3	701	13,711	6.00
MAY	...	2,390	8,392	3.51	69	410	0.17	3	3,279	12,081	5.05
JUN	...	2,291	5,277	2.30	29	283	0.12	2	12,679	18,238	7.96
JUL	...	2,227	8,325	3.74	39	208	0.09	1	12,624	21,157	9.50
AUG	...	1,978	4,860	2.46	29	103	0.05	1	11,775	16,737	8.46
SEP	...	2,001	10,874	5.43	59	75	0.04	0	7,636	18,585	9.29
OCT	...	2,073	7,530	3.63	94	155	0.07	2	350	8,035	3.88
NOV	...	1,399	8,221	5.88	90	135	0.10	1	792	9,148	6.54
DEC	...	535	5,489	10.26	99	52	0.10	1	10	5,552	10.38
TOT	...	20,955	90,618	4.32	63	2,500	0.12	2	49,971	143,089	6.83
AVG	...	1,746	7,551	4.91	74	208	0.13	2	4,164	11,924	6.99

### POLE AND LINE: SOLOMON ISLANDS

The statistics in Table 14, which cover the Solomon Islands pole-and-line fleet, including chartered Okinawan vessels, were determined from logsheet data held at SPC on 31 December 2004. Coverage rates are 97 per cent for 2001, 99 per cent for 2002 and 82 per cent for 2003; the statistics in Table 14 have not been raised to represent complete coverage. Figure 34 presents catch rates for skipjack and yellowfin; the estimates of catch rates for 1971–1995 were provided by the Solomon Islands Fisheries Division, while those for 1996–2003 were determined from logsheet data held at SPC. Figure 35 presents estimates of annual catches.

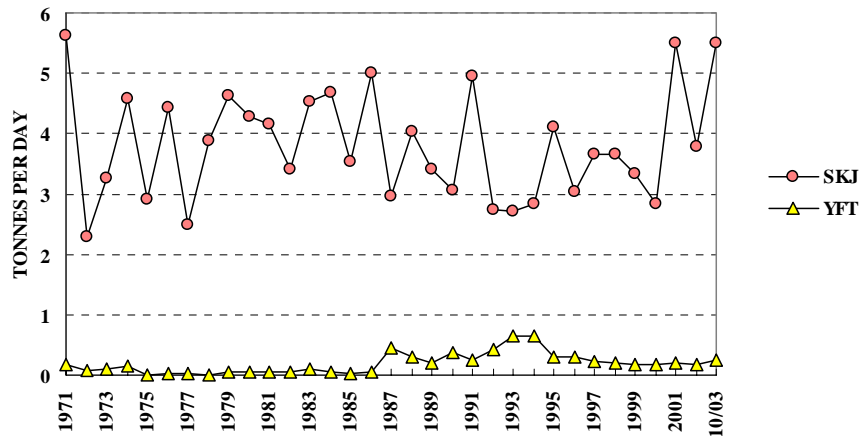


Figure 34. Solomon Islands pole-and-line catch rates (tonnes per day fished or searched) for skipjack (SKJ) and yellowfin (YFT)

Figure 34. Taux de prise (nombre de tonnes par jour de pêche ou de recherche du poisson) de bonite (SKJ) et de thon jaune (YFT) des canneurs des Îles Salomon

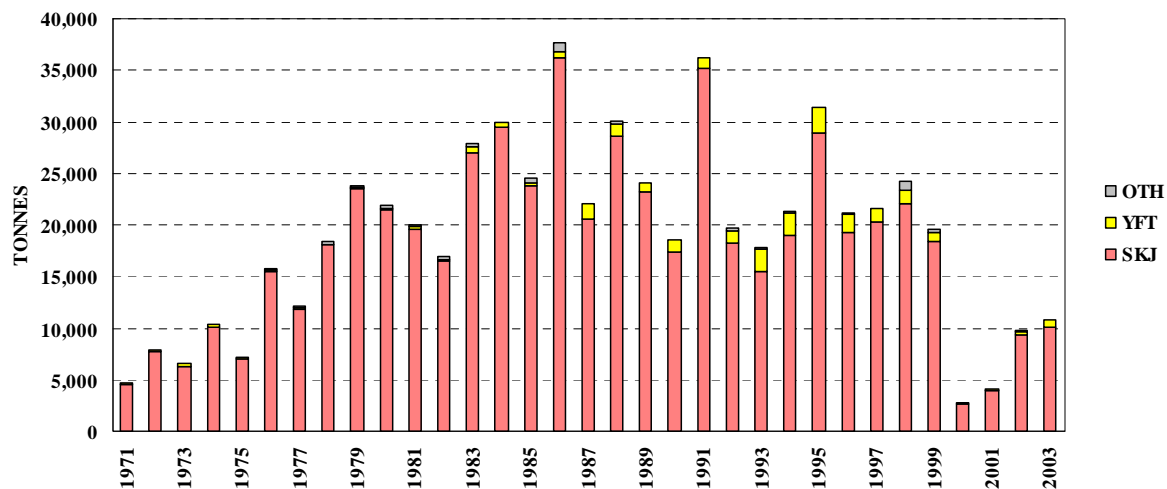


Figure 35. Catches (tonnes) of skipjack (SKJ), yellowfin (YFT) and other species (OTH) by Solomon Islands pole-and-line vessels

Figure 35. Prises (en tonnes) de bonite (SKJ), de thon jaune (YFT) et d'autres espèces (OTH) des canneurs des Îles Salomon

**Table 14. Catch statistics for Solomon Islands pole-and-line vessels.** Units: Days Covered = days fished or searched; Catch = tonnes; CPUE = tonnes per day fished or searched.

**Tableau 14. Statistiques de prise des canneurs des Îles Salomon.** Unités : Nbr. de Jours = nombre de jours de pêche ou de recherche du poisson; Prises = tonnes; PUE = nombre de tonnes par jour de pêche ou de recherche du poisson.

MONTH	VESSELS COVERED	DAYS COVERED	SKIPJACK			YELLOWFIN			OTHERS	TOTAL	
			CATCH	CPUE	%	CATCH	CPUE	%		CATCH	CATCH
MOIS	NBR. DE NAVIRES	NBR. DE JOURS	BONITE			THON JAUNE			AUTRES	TOTAL	
			PRISES	PUE	%	PRISES	PUE	%		PRISES	PRISES
JAN/01	0	—	—	—	—	—	—	—	—	—	—
FEB	0	—	—	—	—	—	—	—	—	—	—
MAR	0	—	—	—	—	—	—	—	—	—	—
APR	0	—	—	—	—	—	—	—	—	—	—
MAY	2	9	26	2.90	58	16	1.82	36	2	45	4.99
JUN	2	26	193	7.41	98	4	0.15	2	0	197	7.57
JUL	2	21	172	8.20	99	2	0.10	1	0	174	8.30
AUG	0	—	—	—	—	—	—	—	—	—	—
SEP	7	124	1,761	14.20	98	29	0.23	2	0	1,789	14.43
OCT	8	153	885	5.78	97	29	0.19	3	0	914	5.97
NOV	9	168	496	2.95	95	26	0.15	5	1	523	3.11
DEC	9	189	270	1.43	85	39	0.21	12	8	317	1.68
TOT	12	690	3,802	5.51	96	145	0.21	4	12	3,959	5.74
AVG	6	99	543	6.12	96	21	0.41	4	2	566	6.58
JAN/02	8	149	266	1.78	86	33	0.22	11	11	310	2.08
FEB	10	186	332	1.78	81	56	0.30	14	23	412	2.21
MAR	10	193	1,285	6.66	95	42	0.22	3	27	1,355	7.02
APR	11	217	653	3.01	89	46	0.21	6	31	731	3.37
MAY	11	240	1,036	4.32	96	32	0.13	3	12	1,080	4.50
JUN	11	220	748	3.40	96	19	0.09	2	11	778	3.53
JUL	11	209	573	2.74	97	10	0.05	2	5	589	2.82
AUG	11	230	985	4.28	99	8	0.04	1	3	996	4.33
SEP	11	237	1,003	4.23	97	23	0.10	2	7	1,032	4.36
OCT	11	214	823	3.85	95	37	0.17	4	4	864	4.04
NOV	9	178	789	4.44	94	40	0.23	5	13	842	4.73
DEC	9	134	639	4.77	92	57	0.42	8	2	697	5.21
TOT	12	2,407	9,132	3.79	94	405	0.17	4	148	9,685	4.02
AVG	10	201	761	3.77	94	34	0.18	4	12	807	4.02
JAN/03	9	174	1,394	8.01	95	71	0.41	5	0	1,465	8.42
FEB	9	169	1,274	7.54	96	56	0.33	4	0	1,330	7.87
MAR	7	152	850	5.59	94	53	0.35	6	0	903	5.94
APR	9	163	815	5.00	97	22	0.13	3	2	839	5.15
MAY	9	191	1,117	5.85	97	27	0.14	2	5	1,149	6.02
JUN	8	151	994	6.59	97	28	0.18	3	2	1,024	6.78
JUL	9	155	737	4.75	96	30	0.20	4	2	769	4.96
AUG	9	167	571	3.42	95	28	0.17	5	1	601	3.60
SEP	8	176	619	3.52	94	42	0.24	6	0	661	3.76
OCT	2	31	58	1.87	95	3	0.09	5	0	61	1.96
NOV	0	—	—	—	—	—	—	—	—	—	—
DEC	0	—	—	—	—	—	—	—	—	—	—
TOT	12	1,529	8,430	5.51	96	360	0.24	4	13	8,803	5.76
AVG	8	153	843	5.21	96	36	0.22	4	1	880	5.45

### PURSE SEINE: FEDERATED STATES OF MICRONESIA

The statistics in Table 15 were determined from logsheet data held at SPC on 31 December 2004. Coverage is complete for 2002 and 98 per cent for 2003. Figure 36 presents catch rates for skipjack, yellowfin and all species combined. Figure 37 presents estimates of annual catches.

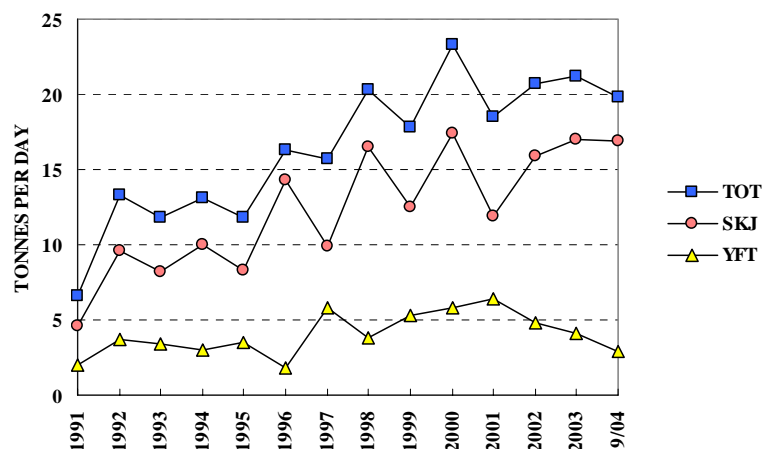


Figure 36. Federated States of Micronesia purse seiner catch rates (tonnes per day fished or searched) for skipjack (SKJ), yellowfin (YFT) and total catch (TOT)

Figure 36. Taux de prise (nombre de tonnes par jour de pêche ou de recherche du poisson) de bonite (SKJ), de thon jaune (YFT) et prises totales (TOT) des senneurs des États fédérés de Micronésie

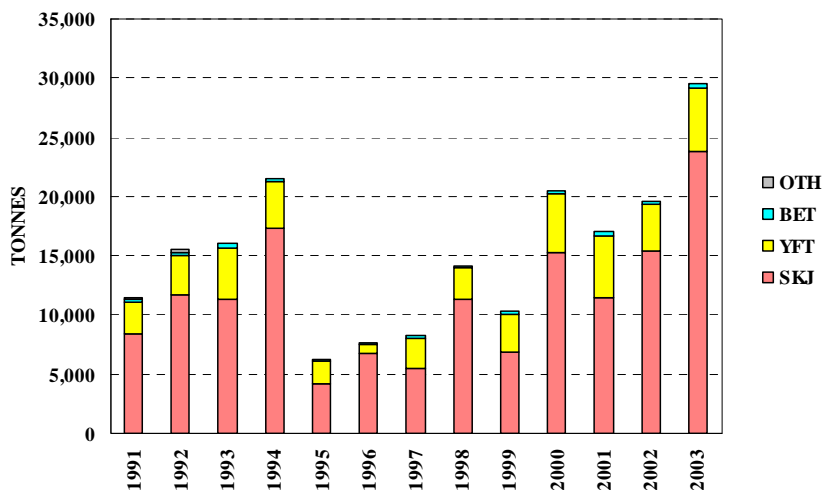


Figure 37. Catches (tonnes) of skipjack (SKJ), yellowfin (YFT), bigeye (BET) and other species (OTH) by Federated States of Micronesia purse seiners

Figure 37. Prises (en tonnes) de bonite (SKJ), de thon jaune (YFT), de thon obèse (BET) et d'autres espèces (OTH) des senneurs des États fédérés de Micronésie

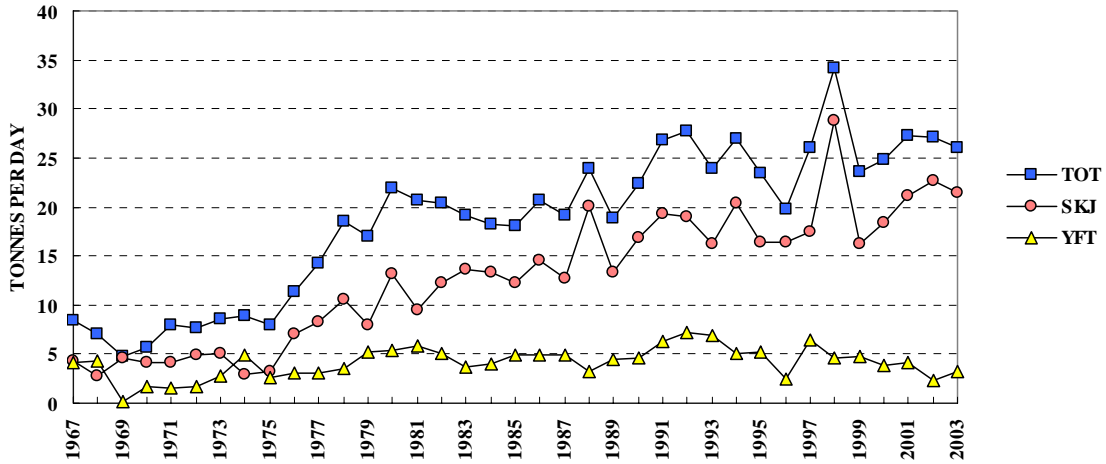
**Table 15. Catch statistics for Federated States of Micronesia purse seiners.** Units: Days Covered = days fished or searched; Catch = tonnes; CPUE = tonnes per day fished or searched.

**Tableau 15. Statistiques de prise des senneurs des États Fédérés de Micronésie.** Unités : Nbr de Jours = nombre de jours de pêche ou de recherche du poisson; Prises = tonnes; PUE = nombre de tonnes par jour de pêche ou de recherche du poisson.

MONTH	VESSELS COVERED	DAYS COVERED	SKIPJACK			YELLOWFIN			OTHERS	TOTAL	
			CATCH	CPUE	%	CATCH	CPUE	%		CATCH	CATCH
MOIS	NBR. DE NAVIRES	NBR. DE JOURS	BONITE			THON JAUNE			AUTRES	TOTAL	
			PRISES	PUE	%	PRISES	PUE	%		PRISES	PRISES
JAN/02	5	97	1,410	14.54	62	848	8.74	38	0	2,258	23.28
FEB	5	64	1,603	25.05	84	298	4.65	16	0	1,901	29.70
MAR	5	87	1,124	12.91	72	435	5.00	28	0	1,558	17.91
APR	4	86	2,012	23.39	87	292	3.39	13	0	2,304	26.79
MAY	4	51	1,135	22.26	84	217	4.25	16	0	1,352	26.51
JUN	4	55	914	16.62	94	60	1.09	6	0	974	17.71
JUL	3	38	401	10.55	89	51	1.34	11	0	452	11.89
AUG	4	88	1,287	14.63	83	263	2.99	17	0	1,550	17.61
SEP	5	84	322	3.83	42	440	5.24	58	0	762	9.07
OCT	5	93	1,380	14.83	55	1,113	11.97	45	0	2,493	26.80
NOV	7	128	2,298	17.96	96	105	0.82	4	0	2,403	18.78
DEC	6	101	1,617	16.01	76	501	4.96	24	0	2,119	20.98
TOT	8	972	15,504	15.95	77	4,622	4.76	23	0	20,126	20.71
AVG	5	81	1,292	16.05	77	385	4.54	23	0	1,677	20.59
JAN/03	7	143	2,756	19.27	91	257	1.80	9	0	3,013	21.07
FEB	7	154	2,551	16.57	78	720	4.67	22	0	3,271	21.24
MAR	5	81	2,068	25.53	95	117	1.44	5	0	2,185	26.98
APR	6	100	2,433	24.33	82	518	5.18	18	0	2,951	29.51
MAY	5	105	2,060	19.62	82	439	4.18	18	0	2,499	23.80
JUN	5	114	1,957	17.16	81	447	3.92	19	0	2,404	21.09
JUL	5	77	1,510	19.61	85	277	3.60	16	0	1,787	23.21
AUG	7	102	921	9.03	67	461	4.52	33	0	1,382	13.55
SEP	7	144	2,333	16.20	77	654	4.54	22	40	3,027	21.02
OCT	6	116	1,962	16.91	81	475	4.09	19	0	2,437	21.01
NOV	6	111	1,387	12.49	67	692	6.24	33	0	2,079	18.73
DEC	6	125	1,456	11.65	71	564	4.51	27	41	2,061	16.48
TOT	8	1,372	23,394	17.05	80	5,621	4.10	19	81	29,095	21.21
AVG	6	114	1,950	17.36	80	468	4.06	19	7	2,425	21.47
JAN/04	6	102	1,234	12.09	83	203	1.99	14	45	1,482	14.52
FEB	5	113	1,936	17.13	76	596	5.27	24	0	2,532	22.41
MAR	6	96	2,103	21.90	84	401	4.18	16	0	2,504	26.08
APR	6	118	1,697	14.38	86	284	2.41	14	0	1,981	16.79
MAY	6	145	2,916	20.11	93	208	1.44	7	0	3,124	21.55
JUN	6	85	625	7.35	84	123	1.45	16	0	748	8.80
JUL	3	73	1,250	17.12	79	330	4.52	21	0	1,580	21.64
AUG	4	66	1,405	21.29	90	150	2.27	10	0	1,555	23.57
SEP	1	8	465	58.13	97	15	1.88	3	0	480	60.00
OCT	0	—	—	—	—	—	—	—	—	—	—
NOV	0	—	—	—	—	—	—	—	—	—	—
DEC	0	—	—	—	—	—	—	—	—	—	—
TOT	6	806	13,630	16.91	85	2,310	2.87	14	46	15,985	19.83
AVG	5	90	1,514	21.06	85	257	2.82	14	5	1,776	23.93

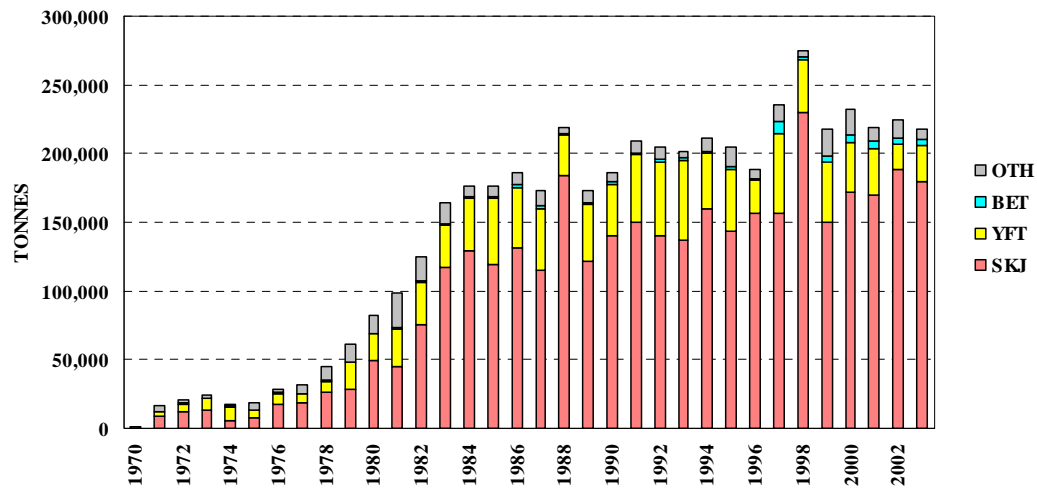
**PURSE SEINE: JAPAN**

The statistics in Table 16 and Figure 38 cover Japanese distant-water purse seiners in the Western and Central Pacific Ocean (Figure 1). All statistics were determined from data provided by the Fisheries Agency of Japan, grouped by 1° longitude, 1° latitude and month. Figure 39 presents estimates of annual catches.



**Figure 38. Japanese purse seiner catch rates (tonnes per day fished) for skipjack (SKJ), yellowfin (YFT) and total catch (TOT)**

**Figure 38. Taux de prise (nombre de tonnes par jour de pêche ou de recherche du poisson) de bonite (SKJ), de thon jaune (YFT) et prises totales (TOT) des senneurs du Japon**



**Figure 39. Catches (tonnes) of skipjack (SKJ), yellowfin (YFT), bigeye (BET) and other species (OTH) by Japanese purse seiners**

**Figure 39. Prises (en tonnes) de bonite (SKJ), de thon jaune (YFT), de thon obèse (BET) et d'autres espèces (OTH) des senneurs du Japon**

**Table 16. Catch statistics for Japanese purse seiners.** Units: Days = days fished or searched; Catch = tonnes; CPUE = tonnes per day fished or searched.

**Tableau 16. Statistiques de prise des senneurs du Japon.** Unités : Nbr de Jours = nombre de jours de pêche ou de recherche du poisson; Prises = tonnes; PUE = nombre de tonnes par jour de pêche ou de recherche du poisson.

MONTH	VESSELS COVERED	DAYS	SKIPJACK			YELLOWFIN			OTHERS	TOTAL	
			CATCH	CPUE	%	CATCH	CPUE	%		CATCH	CATCH
MOIS	NBR. DE NAVIRES	NBR. DE JOURS	BONITE			THON JAUNE			AUTRES	TOTAL	
			PRISES	PUE	%	PRISES	PUE	%		PRISES	PRISES
JAN/01	...	432	6,628	15.34	53	5,318	12.31	43	540	12,487	28.91
FEB	...	453	10,605	23.41	79	2,123	4.69	16	726	13,453	29.70
MAR	...	620	13,064	21.07	79	1,623	2.62	10	1,807	16,494	26.60
APR	...	568	12,486	21.98	80	1,737	3.06	11	1,387	15,609	27.48
MAY	...	824	15,835	19.22	73	4,414	5.36	20	1,484	21,733	26.38
JUN	...	1,064	20,541	19.31	73	3,789	3.56	13	3,947	28,277	26.58
JUL	...	996	27,064	27.17	81	4,538	4.56	14	1,618	33,220	33.35
AUG	...	830	13,070	15.75	75	2,749	3.31	16	1,583	17,402	20.97
SEP	...	572	17,074	29.85	87	1,549	2.71	8	919	19,542	34.16
OCT	...	615	9,254	15.05	76	2,298	3.74	19	632	12,184	19.81
NOV	...	445	13,497	30.33	81	1,995	4.48	12	1,095	16,588	37.28
DEC	...	607	10,262	16.91	83	1,604	2.64	13	557	12,423	20.47
TOT	...	8,026	169,380	21.10	77	33,737	4.20	15	16,294	219,411	27.34
AVG	...	669	14,115	21.28	77	2,811	4.42	16	1,358	18,284	27.64
JAN/02	...	410	15,776	38.48	89	1,477	3.60	8	486	17,738	43.26
FEB	...	525	15,434	29.40	82	2,347	4.47	12	1,084	18,865	35.93
MAR	...	549	11,975	21.81	80	2,050	3.73	14	861	14,886	27.11
APR	...	466	13,837	29.69	87	1,358	2.91	9	630	15,825	33.96
MAY	...	761	14,654	19.26	80	2,636	3.46	14	1,112	18,403	24.18
JUN	...	1,227	16,381	13.35	74	2,572	2.10	12	3,074	22,026	17.95
JUL	...	955	21,304	22.31	84	1,020	1.07	4	2,977	25,301	26.49
AUG	...	981	18,777	19.14	80	1,413	1.44	6	3,386	23,575	24.03
SEP	...	850	17,974	21.15	87	1,505	1.77	7	1,290	20,769	24.43
OCT	...	643	13,240	20.59	92	502	0.78	4	600	14,342	22.31
NOV	...	452	11,539	25.53	84	672	1.49	5	1,458	13,669	30.24
DEC	...	489	17,161	35.09	88	1,587	3.25	8	797	19,546	39.97
TOT	...	8,308	188,052	22.64	84	19,138	2.30	9	17,755	224,945	27.08
AVG	...	692	15,671	24.65	84	1,595	2.51	9	1,480	18,745	29.16
JAN/03	...	474	13,184	27.81	77	3,650	7.70	21	363	17,197	36.28
FEB	...	553	20,552	37.16	92	1,139	2.06	5	712	22,403	40.51
MAR	...	481	19,511	40.57	96	396	0.82	2	381	20,288	42.18
APR	...	515	11,487	22.30	88	1,380	2.68	11	143	13,010	25.26
MAY	...	674	12,867	19.09	89	1,175	1.74	8	468	14,510	21.53
JUN	...	973	15,169	15.59	74	2,926	3.01	14	2,492	20,587	21.16
JUL	...	1,139	32,294	28.35	91	1,988	1.75	6	1,373	35,654	31.30
AUG	...	895	15,779	17.63	81	2,902	3.24	15	827	19,508	21.80
SEP	...	777	10,465	13.47	76	2,539	3.27	19	697	13,702	17.63
OCT	...	561	10,108	18.02	78	2,444	4.36	19	463	13,015	23.20
NOV	...	712	6,267	8.80	51	3,407	4.79	28	2,684	12,358	17.36
DEC	...	606	11,692	19.29	75	2,645	4.36	17	1,326	15,664	25.85
TOT	...	8,360	179,375	21.46	82	26,592	3.18	12	11,928	217,895	26.06
AVG	...	697	14,948	22.34	81	2,216	3.31	14	994	18,158	27.01

### PURSE SEINE: PAPUA NEW GUINEA

The statistics in Table 17 and Figure 40 were determined from logsheet data held at SPC on 31 December 2004. Coverage is complete for 2002 and 96 per cent for 2003; the statistics in Table 17 have not been raised to represent complete coverage. Figure 41 presents estimates of annual catches.

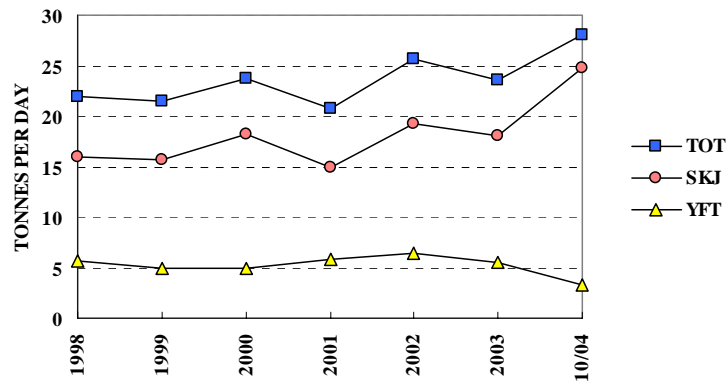


Figure 40. Papua New Guinea purse seiner catch rates (tonnes per day fished or searched) for skipjack (SKJ), yellowfin (YFT) and total catch (TOT)

Figure 40. Taux de prise (nombre de tonnes par jour de pêche ou de recherche du poisson) de bonite (SKJ), de thon jaune (YFT) et prises totales (TOT) des senneurs de Papouasie-Nouvelle-Guinée

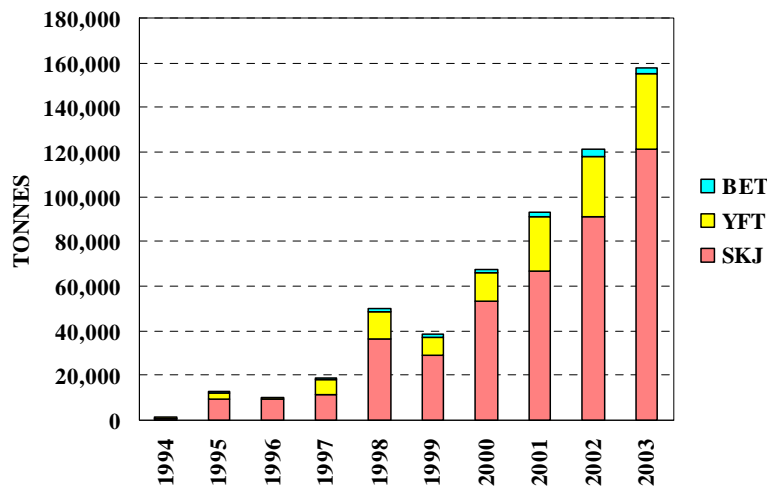


Figure 41. Catches (tonnes) of skipjack (SKJ), yellowfin (YFT), bigeye (BET) and other species (OTH) by Papua New Guinea purse seiners

Figure 41. Prises (en tonnes) de bonite (SKJ), de thon jaune (YFT), de thon obèse (BET) et d'autres espèces (OTH) des senneurs de Papouasie-Nouvelle-Guinée



**Table 17. Catch statistics for Papua New Guinea purse seiners.** Units: Days Covered = days fished or searched; Catch = tonnes; CPUE = tonnes per day fished or searched.

**Tableau 17. Statistiques de prise des senneurs de Papouasie-Nouvelle-Guinée.** Unités : Nbr de Jours = nombre de jours de pêche ou de recherche du poisson; Prises = tonnes; PUE = nombre de tonnes par jour de pêche ou de recherche du poisson.

MONTH	VESSELS COVERED	DAYS COVERED	SKIPJACK			YELLOWFIN			OTHERS	TOTAL	
			CATCH	CPUE	%	CATCH	CPUE	%		CATCH	CATCH
MOIS	NBR. DE NAVIRES	NBR. DE JOURS	BONITE			THON JAUNE			AUTRES	TOTAL	
			PRISES	PUE	%	PRISES	PUE	%		PRISES	PRISES
JAN/02	17	331	6,729	20.33	73	2,459	7.43	27	1	9,189	27.76
FEB	16	311	5,097	16.39	73	1,849	5.94	27	14	6,959	22.38
MAR	16	353	5,899	16.71	68	2,771	7.85	32	15	8,685	24.60
APR	16	362	6,589	18.20	78	1,809	5.00	21	29	8,427	23.28
MAY	20	390	5,752	14.75	81	1,373	3.52	19	13	7,138	18.30
JUN	19	360	4,375	12.15	69	1,931	5.36	31	9	6,315	17.54
JUL	18	366	8,106	22.15	80	2,034	5.56	20	21	10,161	27.76
AUG	21	446	7,490	16.79	76	2,346	5.26	24	17	9,853	22.09
SEP	22	507	9,746	19.22	67	4,771	9.41	33	4	14,522	28.64
OCT	21	461	7,849	17.03	69	3,424	7.43	30	67	11,341	24.60
NOV	20	439	9,799	22.32	73	3,471	7.91	26	214	13,484	30.71
DEC	21	425	13,688	32.21	87	1,966	4.63	13	11	15,666	36.86
TOT	26	4,751	91,118	19.18	75	30,205	6.36	25	415	121,738	25.62
AVG	19	396	7,593	19.02	75	2,517	6.28	25	35	10,145	25.38
JAN/03	21	418	11,913	28.50	85	2,015	4.82	14	18	13,946	33.36
FEB	22	411	9,323	22.68	71	3,718	9.05	28	45	13,086	31.84
MAR	22	469	16,439	35.05	82	3,676	7.84	18	21	20,137	42.94
APR	24	509	13,194	25.92	74	4,711	9.25	26	8	17,912	35.19
MAY	24	525	10,691	20.36	91	1,079	2.05	9	6	11,775	22.43
JUN	24	499	6,429	12.88	78	1,798	3.60	22	8	8,235	16.50
JUL	25	649	8,098	12.48	68	3,797	5.85	32	10	11,904	18.34
AUG	25	613	5,066	8.26	63	3,023	4.93	37	12	8,100	13.21
SEP	25	555	5,207	9.38	57	3,928	7.08	43	7	9,141	16.47
OCT	25	622	9,062	14.57	79	2,456	3.95	21	2	11,520	18.52
NOV	27	583	9,439	16.19	73	3,411	5.85	27	2	12,853	22.05
DEC	27	566	10,916	19.29	83	2,294	4.05	17	8	13,217	23.35
TOT	32	6,419	115,775	18.04	76	35,906	5.59	24	147	151,828	23.65
AVG	24	535	9,648	18.80	76	2,992	5.69	24	12	12,652	24.52
JAN/04	27	566	14,831	26.20	87	2,153	3.80	13	10	16,994	30.02
FEB	28	561	14,447	25.75	88	1,940	3.46	12	2	16,389	29.21
MAR	20	414	11,857	28.64	95	676	1.63	5	5	12,537	30.28
APR	20	365	12,081	33.10	97	313	0.86	3	6	12,400	33.97
MAY	26	566	14,329	25.32	88	1,876	3.31	12	4	16,208	28.64
JUN	25	541	7,750	14.32	85	1,330	2.46	15	1	9,080	16.78
JUL	22	499	7,534	15.10	68	3,540	7.09	32	0	11,074	22.19
AUG	11	198	6,442	32.54	92	589	2.97	8	0	7,031	35.51
SEP	5	111	3,825	34.46	98	53	0.48	1	9	3,887	35.02
OCT	4	56	3,095	55.27	100	5	0.09	0	0	3,100	55.36
NOV	0	—	—	—	—	—	—	—	—	—	—
DEC	0	—	—	—	—	—	—	—	—	—	—
TOT	31	3,877	96,191	24.81	88	12,474	3.22	11	37	108,701	28.04
AVG	19	388	9,619	29.07	88	1,247	2.62	11	4	10,870	31.70

### PURSE SEINE: REPUBLIC OF KOREA

The statistics in Table 18 and Figure 42 were determined from logsheet data held at SPC on 31 December 2004. Coverage is complete for 2002 and 81 per cent for 2003; the statistics in Table 18 have not been raised to represent complete coverage. Figure 43 presents estimates of annual catches.

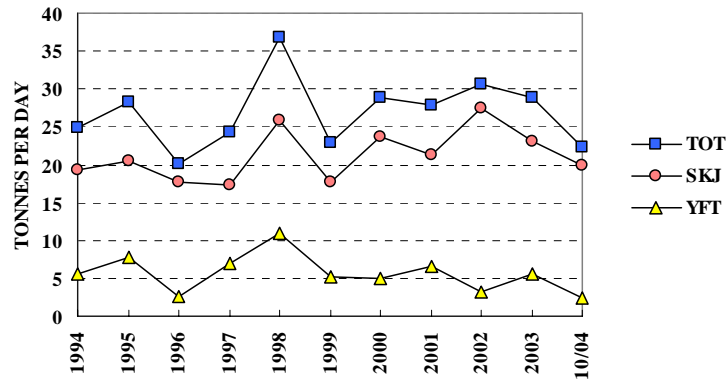


Figure 42. Korean purse seiner catch rates (tonnes per day fished or searched) for skipjack (SKJ), yellowfin (YFT) and total catch (TOT)

Figure 42. Taux de prise (nombre de tonnes par jour de pêche ou de recherche du poisson) de bonite (SKJ), de thon jaune (YFT) et prises totales (TOT) des senneurs de Corée

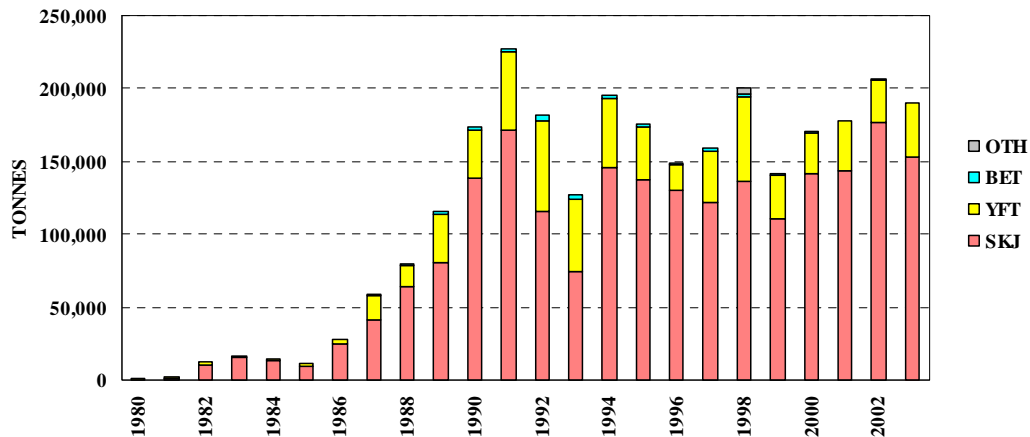


Figure 43. Catches (tonnes) of skipjack (SKJ), yellowfin (YFT), bigeye (BET) and other species (OTH) by Korean purse seiners

Figure 43. Prises (en tonnes) de bonite (SKJ), de thon jaune (YFT), de thon obèse (BET) et d'autres espèces (OTH) des senneurs de Corée

**Table 18. Catch statistics for Korean purse seiners.** Units: Days Covered = days fished or searched; Catch = tonnes; CPUE = tonnes per day fished or searched.

**Tableau 18. Statistiques de prise des senneurs de Corée.** Unités : Nbr de Jours = nombre de jours de pêche ou de recherche du poisson; Prises = tonnes; PUE = nombre de tonnes par jour de pêche ou de recherche du poisson.

MONTH	VESSELS COVERED	DAYS COVERED	SKIPJACK			YELLOWFIN			OTHERS	TOTAL	
			CATCH	CPUE	%	CATCH	CPUE	%		CATCH	CPUE
MOIS	NBR. DE NAVIRES	NBR. DE JOURS	BONITE			THON JAUNE			AUTRES	TOTAL	
			PRISES	PUE	%	PRISES	PUE	%		PRISES	PUE
JAN/02	27	575	13,560	23.58	84	2,503	4.35	16	17	16,080	27.97
FEB	27	511	13,730	26.87	91	1,391	2.72	9	14	15,135	29.62
MAR	26	643	13,795	21.45	89	1,640	2.55	11	20	15,455	24.04
APR	25	484	15,375	31.77	93	1,055	2.18	6	40	16,470	34.03
MAY	25	551	11,233	20.39	89	1,342	2.44	11	10	12,585	22.84
JUN	25	562	12,870	22.90	90	1,405	2.50	10	10	14,285	25.42
JUL	26	537	18,085	33.68	94	1,083	2.02	6	2	19,170	35.70
AUG	26	537	10,390	19.35	86	1,728	3.22	14	2	12,120	22.57
SEP	25	418	9,675	23.15	61	6,290	15.05	39	0	15,965	38.19
OCT	28	382	13,840	36.23	97	410	1.07	3	0	14,250	37.30
NOV	27	594	16,420	27.64	99	105	0.18	1	0	16,525	27.82
DEC	26	535	24,315	45.45	94	1,565	2.93	6	0	25,880	48.37
TOT	29	6,329	173,288	27.38	89	20,517	3.24	11	115	193,920	30.64
AVG	26	527	14,441	27.71	89	1,710	3.43	11	10	16,160	31.16
JAN/03	26	533	19,370	36.34	86	3,105	5.83	14	5	22,480	42.18
FEB	23	418	11,930	28.54	57	8,963	21.44	43	7	20,900	50.00
MAR	23	437	15,365	35.16	92	1,285	2.94	8	30	16,680	38.17
APR	19	415	15,560	37.49	92	1,325	3.19	8	0	16,885	40.69
MAY	18	325	9,770	30.06	99	115	0.35	1	0	9,885	30.42
JUN	19	441	7,390	16.76	87	1,100	2.49	13	20	8,510	19.30
JUL	19	481	7,285	15.15	88	970	2.02	12	5	8,260	17.17
AUG	21	466	5,035	10.80	76	1,534	3.29	23	21	6,590	14.14
SEP	22	475	9,126	19.21	67	4,401	9.27	33	15	13,542	28.51
OCT	20	489	6,555	13.40	74	2,360	4.83	26	2	8,917	18.23
NOV	19	407	10,580	26.00	76	3,316	8.15	24	45	13,941	34.25
DEC	19	442	5,369	12.15	76	1,686	3.81	24	0	7,055	15.96
TOT	27	5,329	123,335	23.14	80	30,160	5.66	20	150	153,645	28.83
AVG	21	444	10,278	23.42	80	2,513	5.63	20	12	12,804	29.09
JAN/04	20	480	10,505	21.89	83	2,225	4.64	17	1	12,731	26.52
FEB	7	157	4,130	26.31	94	270	1.72	6	0	4,400	28.03
MAR	22	487	11,555	23.73	94	785	1.61	6	0	12,340	25.34
APR	24	554	11,500	20.76	94	670	1.21	6	0	12,170	21.97
MAY	24	553	11,440	20.69	96	525	0.95	4	5	11,970	21.65
JUN	21	464	5,445	11.73	98	110	0.24	2	5	5,560	11.98
JUL	22	557	8,655	15.54	75	2,930	5.26	25	0	11,585	20.80
AUG	7	158	2,510	15.89	90	275	1.74	10	0	2,785	17.63
SEP	20	453	10,323	22.79	86	1,697	3.75	14	13	12,032	26.56
OCT	4	79	2,380	30.13	99	25	0.32	1	0	2,405	30.44
NOV	0	—	—	—	—	—	—	—	—	—	—
DEC	0	—	—	—	—	—	—	—	—	—	—
TOT	26	3,942	78,443	19.90	89	9,512	2.41	11	24	87,978	22.32
AVG	17	394	7,844	20.95	89	951	2.14	11	2	8,798	23.09

**PURSE SEINE: CHINESE TAIPEI**

The statistics in Table 19 and Figure 44 were determined from logsheet data held at SPC on 31 December 2004. Coverage is complete for 2002 and 2003; the statistics in Table 19 have not been raised to represent complete coverage. Figure 45 presents estimates of annual catches.

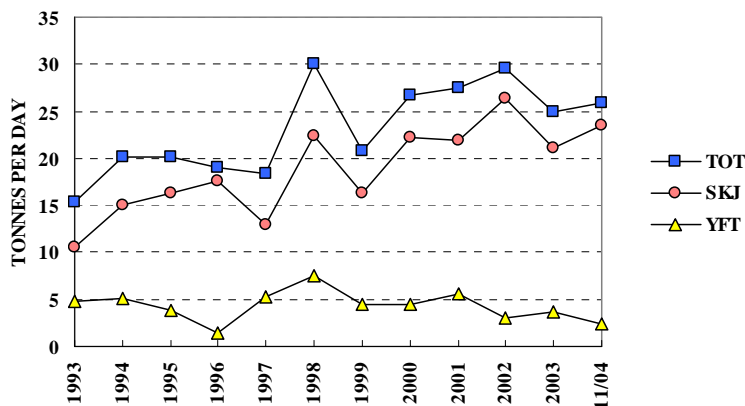


Figure 44. Chinese Taipei purse seiner catch rates (tonnes per day fished or searched) for skipjack (SKJ), yellowfin (YFT) and total catch (TOT)

Figure 44. Taux de prise (nombre de tonnes par jour de pêche ou de recherche du poisson) de bonite (SKJ), de thon jaune (YFT) et prises totales (TOT) des senneurs de Taïwan

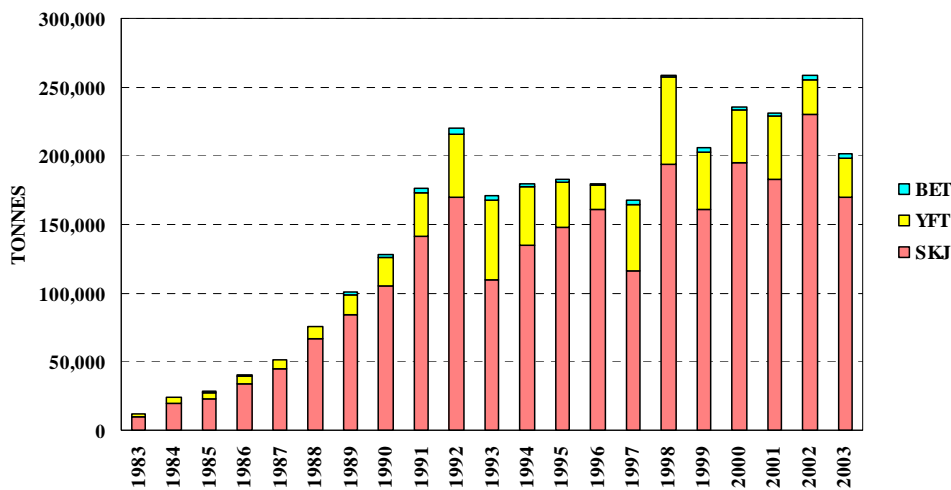


Figure 45. Catches (tonnes) of skipjack (SKJ), yellowfin (YFT) and bigeye (BET) by Chinese Taipei purse seiners

Figure 45. Prises (en tonnes) de bonite (SKJ), de thon jaune (YFT) et de thon obèse (BET) des senneurs de Taïwan

**Table 19. Catch statistics for Chinese Taipei purse seiners.** Units: Days Covered = days fished or searched; Catch = tonnes; CPUE = tonnes per day fished or searched.

**Tableau 19. Statistiques de prise des senneurs de Taïwan.** Unités : Nbr de Jours = nombre de jours de pêche ou de recherche du poisson; Prises = tonnes; PUE = nombre de tonnes par jour de pêche ou de recherche du poisson.

MONTH	VESSELS COVERED	DAYS COVERED	SKIPJACK			YELLOWFIN			OTHERS	TOTAL	
			CATCH	CPUE	%	CATCH	CPUE	%		CATCH	CPUE
MOIS	NBR. DE NAVIRES	NBR. DE JOURS	BONITE			THON JAUNE			AUTRES	TOTAL	
			PRISES	PUE	%	PRISES	PUE	%		PRISES	PUE
JAN/02	39	804	24,430	30.39	87	3,736	4.65	13	61	28,227	35.11
FEB	39	678	18,786	27.71	90	1,986	2.93	9	168	20,940	30.88
MAR	39	899	20,647	22.97	91	2,064	2.30	9	60	22,771	25.33
APR	40	838	25,407	30.32	87	3,642	4.35	13	29	29,078	34.70
MAY	39	851	19,201	22.56	91	1,726	2.03	8	150	21,077	24.77
JUN	40	740	17,408	23.52	89	2,067	2.79	11	67	19,542	26.41
JUL	39	769	22,628	29.43	94	1,378	1.79	6	68	24,074	31.31
AUG	40	840	17,118	20.38	89	1,950	2.32	10	104	19,172	22.82
SEP	39	774	17,489	22.60	77	5,054	6.53	22	57	22,600	29.20
OCT	40	805	20,041	24.90	94	1,290	1.60	6	40	21,371	26.55
NOV	38	722	19,058	26.40	91	1,907	2.64	9	33	20,998	29.08
DEC	40	782	28,823	36.86	93	1,986	2.54	6	43	30,852	39.45
TOT	43	9,502	251,036	26.42	89	28,786	3.03	10	880	280,702	29.54
AVG	39	792	20,920	26.50	89	2,399	3.04	10	73	23,392	29.63
JAN/03	38	836	22,211	26.57	88	2,966	3.55	12	207	25,384	30.36
FEB	38	700	23,398	33.43	89	2,297	3.28	9	467	26,162	37.37
MAR	36	674	23,330	34.61	90	2,412	3.58	9	298	26,040	38.64
APR	38	784	23,909	30.50	86	3,783	4.83	14	179	27,871	35.55
MAY	38	748	17,177	22.96	97	455	0.61	3	27	17,659	23.61
JUN	36	710	11,544	16.26	81	2,718	3.83	19	52	14,314	20.16
JUL	37	845	10,878	12.87	71	4,443	5.26	29	38	15,359	18.18
AUG	37	841	12,106	14.39	84	2,212	2.63	15	103	14,421	17.15
SEP	38	747	10,401	13.92	66	5,199	6.96	33	144	15,744	21.08
OCT	37	866	14,612	16.87	78	4,164	4.81	22	74	18,850	21.77
NOV	36	722	11,258	15.59	85	1,764	2.44	13	152	13,174	18.25
DEC	34	756	13,153	17.40	87	1,980	2.62	13	67	15,200	20.11
TOT	43	9,229	193,977	21.02	84	34,393	3.73	15	1,808	230,178	24.94
AVG	37	769	16,165	21.28	84	2,866	3.70	15	151	19,182	25.19
JAN/04	34	760	22,261	29.29	89	2,705	3.56	11	8	24,974	32.86
FEB	31	622	15,694	25.23	89	1,857	2.99	11	11	17,562	28.23
MAR	36	642	19,733	30.74	96	738	1.15	4	13	20,484	31.91
APR	38	757	23,073	30.48	96	863	1.14	4	21	23,957	31.65
MAY	38	822	18,837	22.92	94	1,153	1.40	6	14	20,004	24.34
JUN	37	770	10,289	13.36	93	695	0.90	6	51	11,035	14.33
JUL	34	831	13,552	16.31	78	3,914	4.71	22	12	17,478	21.03
AUG	34	721	13,241	18.36	85	2,286	3.17	15	68	15,595	21.63
SEP	23	379	10,874	28.69	92	892	2.35	8	87	11,853	31.27
OCT	12	206	5,768	28.00	99	47	0.23	1	6	5,821	28.26
NOV	2	9	90	10.00	100	0	0.00	0	0	90	10.04
DEC	0	—	—	—	—	—	—	—	—	—	—
TOT	41	6,519	153,412	23.53	91	15,150	2.32	9	292	168,854	25.90
AVG	29	593	13,947	23.03	91	1,377	1.96	9	27	15,350	25.05

### PURSE SEINE: UNITED STATES OF AMERICA

The statistics in Table 20, which cover the United States purse-seine fleet in the Western and Central Pacific Ocean (Figure 1), were determined from logsheet data held at SPC on 31 December 2004. Coverage is 96 per cent for 2002 and complete for 2003; the statistics in Table 20 have not been raised to represent complete coverage. Figure 46 presents estimates of catch rates for skipjack, yellowfin and all species combined; the catch rates for 1981–2001 were provided by the National Marine Fisheries Service, while those for 2002–2004 were determined from logsheet data held at SPC and are thus preliminary. Figure 47 presents estimates of annual catches in the WCPO.

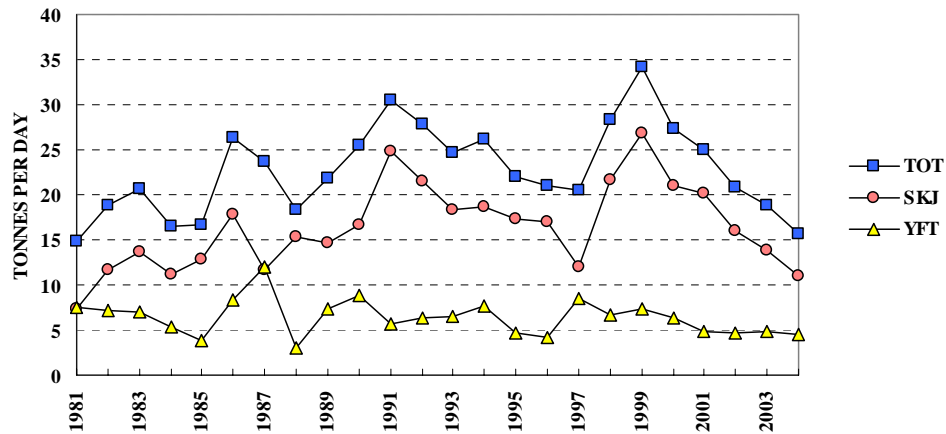


Figure 46. United States purse seiner catch rates (tonnes per day fished or searched) for skipjack (SKJ), yellowfin (YFT) and total catch (TOT)

Figure 46. Taux de prise (nombre de tonnes par jour de pêche ou de recherche du poisson) de bonite (SKJ), de thon jaune (YFT) et prises totales (TOT) des senneurs des États-Unis d'Amérique

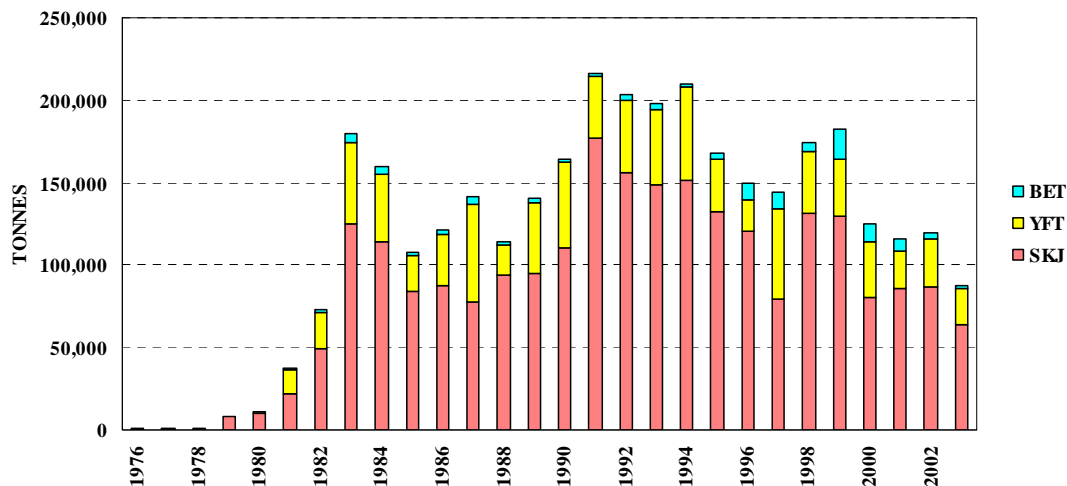


Figure 47. Catches (tonnes) of skipjack (SKJ), yellowfin (YFT) and bigeye (BET) by United States purse seiners

Figure 47. Prises (en tonnes) de bonite (SKJ), de thon jaune (YFT) et de thon obèse (BET) des senneurs des États-Unis d'Amérique

**Table 20. Catch statistics for United States purse seiners.** Units: Days Covered = days fished or searched; Catch = tonnes; CPUE = tonnes per day fished or searched.

**Tableau 20. Statistiques de prise des senneurs des États-Unis.** Unités : Nbr de Jours = nombre de jours de pêche ou de recherche du poisson; Prises = tonnes; PUE = nombre de tonnes par jour de pêche ou de recherche du poisson.

MONTH	VESSELS COVERED	DAYS COVERED	SKIPJACK			YELLOWFIN			OTHERS	TOTAL	
			CATCH	CPUE	%	CATCH	CPUE	%		CATCH	CATCH
MOIS	NBR. DE NAVIRES	NBR. DE JOURS	BONITE			THON JAUNE			AUTRES	TOTAL	
			PRISES	PUE	%	PRISES	PUE	%		PRISES	PRISES
JAN/02	26	497	8,919	17.95	81	1,997	4.02	18	37	10,954	22.04
FEB	27	475	8,247	17.36	86	1,317	2.77	14	26	9,591	20.19
MAR	26	601	10,575	17.60	86	1,635	2.72	13	62	12,273	20.42
APR	27	462	11,764	25.46	89	1,383	2.99	10	57	13,204	28.58
MAY	23	460	6,945	15.10	88	960	2.09	12	6	7,911	17.20
JUN	24	418	9,642	23.07	95	526	1.26	5	14	10,182	24.36
JUL	24	478	5,013	10.49	64	2,821	5.90	36	15	7,850	16.42
AUG	26	514	3,367	6.55	26	9,491	18.46	73	74	12,932	25.16
SEP	23	433	4,821	11.13	57	3,535	8.16	42	47	8,403	19.41
OCT	20	399	8,251	20.68	96	309	0.78	4	14	8,574	21.49
NOV	20	327	4,000	12.23	93	111	0.34	3	170	4,281	13.09
DEC	20	434	6,258	14.42	78	1,713	3.95	21	16	7,988	18.40
TOT	29	5,498	87,803	15.97	77	25,799	4.69	23	540	114,141	20.76
AVG	24	458	7,317	16.00	77	2,150	4.45	23	45	9,512	20.56
JAN/03	17	342	6,523	19.07	83	1,209	3.54	15	104	7,837	22.91
FEB	21	345	4,926	14.28	57	3,755	10.88	43	37	8,718	25.27
MAR	23	430	5,848	13.60	64	3,221	7.49	35	97	9,166	21.32
APR	22	444	6,825	15.37	73	2,432	5.48	26	106	9,363	21.09
MAY	23	473	4,565	9.65	84	821	1.73	15	37	5,423	11.46
JUN	15	311	3,524	11.33	74	1,242	3.99	26	10	4,776	15.36
JUL	17	335	3,042	9.08	77	904	2.70	23	26	3,972	11.86
AUG	19	467	3,710	7.94	70	1,533	3.28	29	83	5,326	11.40
SEP	19	412	5,311	12.89	77	1,484	3.60	22	104	6,898	16.74
OCT	19	387	6,467	16.71	80	1,558	4.03	19	90	8,114	20.97
NOV	21	398	7,087	17.81	69	3,078	7.73	30	98	10,262	25.78
DEC	19	376	7,126	18.95	81	1,669	4.44	19	25	8,820	23.46
TOT	27	4,720	64,952	13.76	73	22,905	4.85	26	816	88,674	18.79
AVG	20	393	5,413	13.89	73	1,909	4.91	26	68	7,389	18.97
JAN/04	17	256	2,808	10.97	79	688	2.69	19	70	3,566	13.93
FEB	21	401	3,727	9.30	70	1,565	3.90	29	29	5,321	13.27
MAR	19	531	6,597	12.42	78	1,845	3.48	22	6	8,449	15.91
APR	17	386	4,604	11.93	68	2,203	5.71	32	0	6,807	17.63
MAY	16	273	3,472	12.72	69	1,543	5.65	31	5	5,021	18.39
JUN	11	252	3,403	13.50	75	1,150	4.56	25	11	4,564	18.11
JUL	8	223	1,520	6.82	51	1,367	6.13	46	100	2,987	13.39
AUG	6	113	619	5.48	52	538	4.76	45	27	1,184	10.47
SEP	1	15	229	15.29	80	59	3.93	20	0	288	19.22
OCT	0	—	—	—	—	—	—	—	—	—	—
NOV	0	—	—	—	—	—	—	—	—	—	—
DEC	0	—	—	—	—	—	—	—	—	—	—
TOT	23	2,450	26,981	11.01	71	10,957	4.47	29	248	38,186	15.59
AVG	13	272	2,998	10.94	71	1,218	4.53	29	28	4,243	15.59