



TUVALU

FOOD SECURITY PROFILE

DEMOGRAPHICS

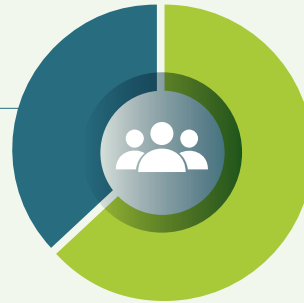


10 645

Population (2017)

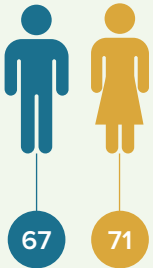
37% Rural population

Outer islands
3 929



Funafuti
6 716

Life expectancy



67

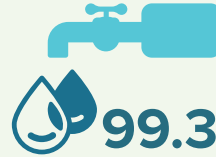
71



Crude birth rate (2018): **24.8**

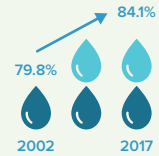


Under five-years-old mortality rate: **24 per 1 000 live births**



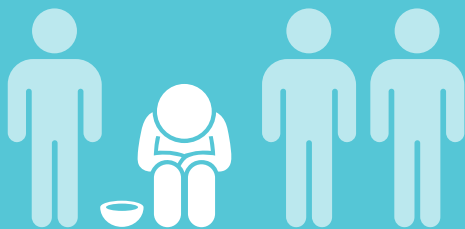
99.3%

of population have access to basic drinking water services (2017)



improved access to basic sanitation services

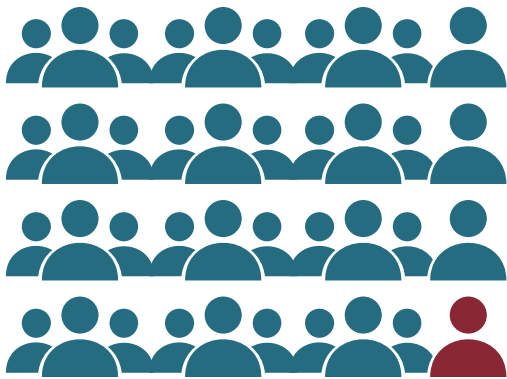
TOWARDS ACHIEVING FOOD SECURITY AND ENDING POVERTY



26.3%

of people live below the national poverty line (2010)

OVERNUTRITION RATHER THAN UNDERNOURISHMENT IS A REAL ISSUE IN TUVALU



ONE PERSON IN 40 IS UNDERNOURISHED IN TUVALU

Children under five years old

3.3%

WASTING (2007)
(low weight for height)

10%

STUNTING (2007)
(low height for age)

6.3%

OVERWEIGHT (2007)
(high weight for height)

18 years and older

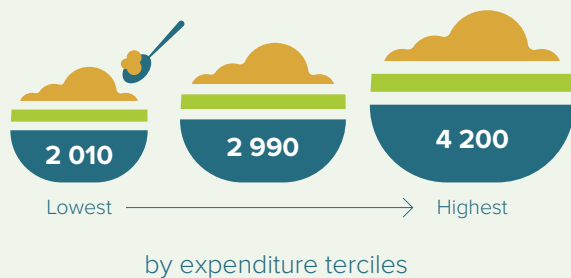


51%

PREVALENCE OF OBESITY IN ADULT POPULATION (2016)

ANALYSIS OF FOOD CONSUMPTION PATTERNS IN TUVALU¹

Average dietary energy consumption
National 2 800 kcal/capita/day



Richer households consume on average twice more dietary energy than poor households

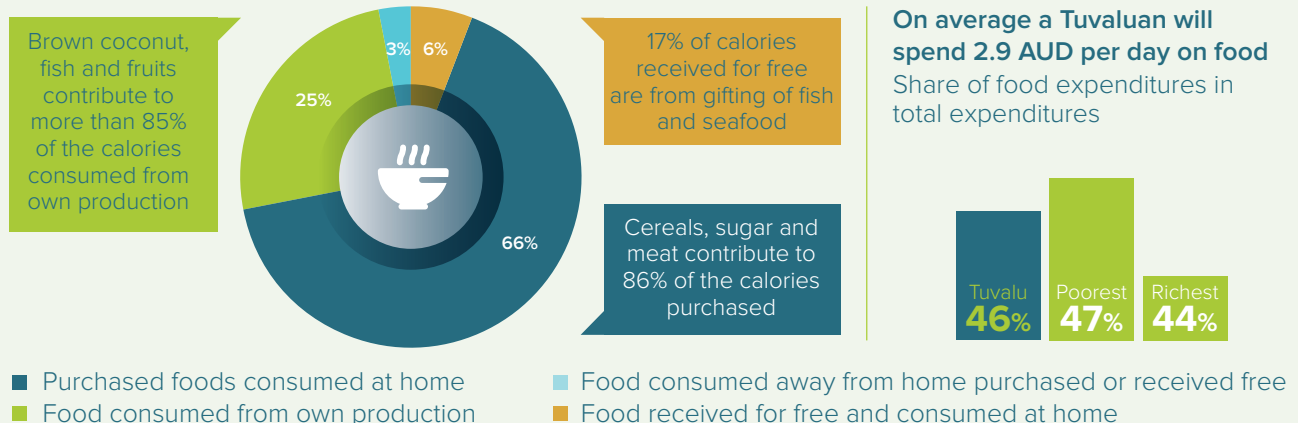
Average cost to acquire 1 000 kcal

Average dietary energy unit value
(Tuvalu (AUD)/1 000 kcal)

Tuvalu	AUD 1.2
First tercile of expenditures	AUD 1.0
Second tercile of expenditures	AUD 1.2
Third tercile of expenditures	AUD 1.6

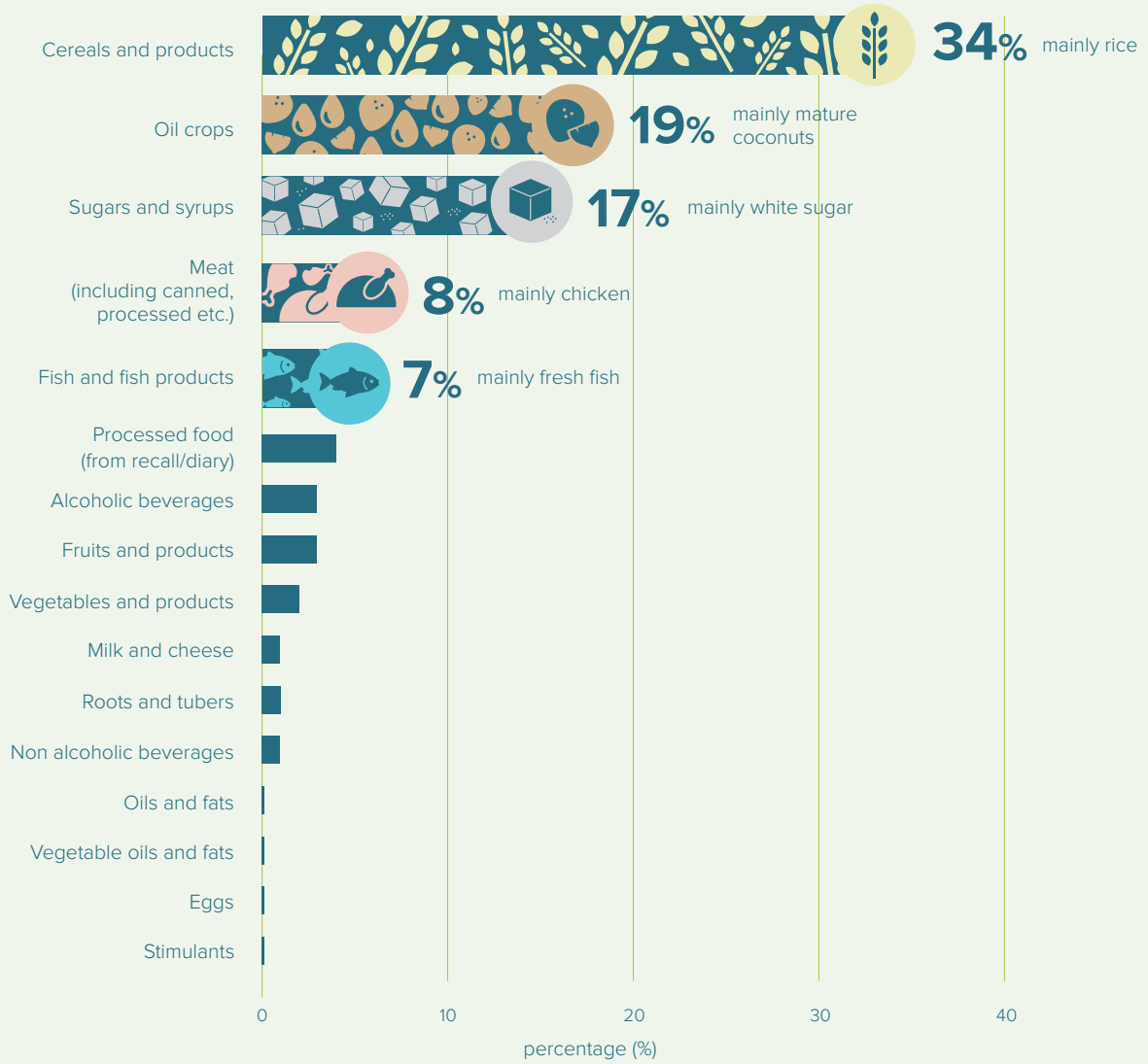
Poor households access less expensive, but more energy dense, food as they spend half less to acquire 1 000 kcal

Contribution of each source of acquisition to total dietary energy consumed (DEC)




¹ Based on the results of the analysis of the food data collected in the 2015 Household Income and Expenditure Survey of Tuvalu using ADePT-FSM. The analysis was performed by FAO in collaboration with Tuvalu National Statistics Office (NSO) and the Pacific Community (SPC). SPC was funded by the Australian Government through ACIAR project FIS/2018/155

Percentage of food consumption by (kcal/capita) food groups



Consumption of fruits and vegetables



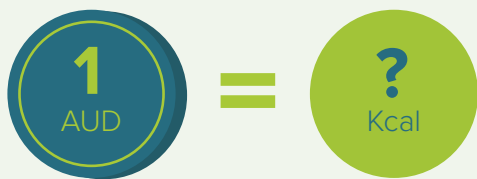
CONSUMED IN TUVALU
102 grams
 per capita per day

VS



RECOMMENDED BY WHO
 FOR A HEALTHY DIET
400 grams
 per capita per day

Number of kcal that we can buy with 1 AUD

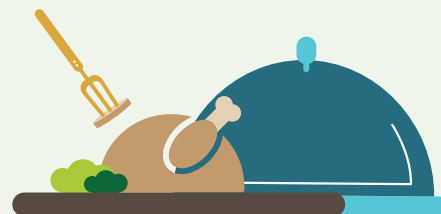


Sugars and syrups	2 472
Cereals and products	1 945
Vegetable oils and fats	1 426
Fruits and products	607
Fish and fish products	360
Milk and cheese	352
Meat (including canned, processed etc.)	333
Vegetables and products	117

More than

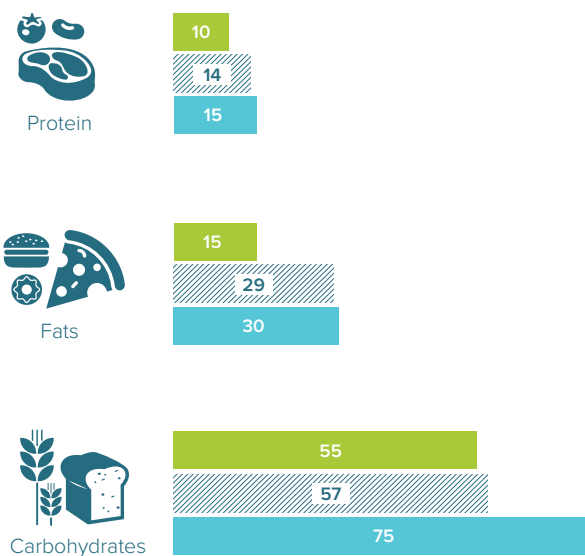
50%

of the protein consumed is from animal origin



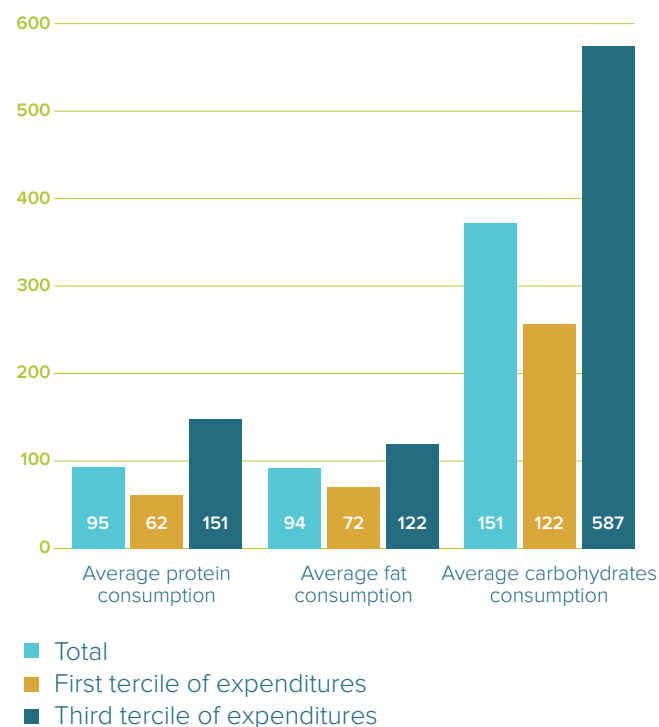
But contribution of proteins from animal origin is higher for richer households

Nutrient contribution to dietary energy consumption (%)



- Lower limit WHO
- Tuvalu
- Upper limit WHO

Quantity of proteins, fats and carbohydrates (g/capita/day)



Contact:

Food and Agriculture Organization of the United Nations
 Subregional Office for the Pacific Islands
 Apia, Samoa
 Tel: (+688) 5 20 710 / 22 127
 SAP-SRC@fao.org

Tuvalu Central Statistics Division
 Ministry of Finance
 Government of Tuvalu
 Tel: (+688) 20107
 statistics@gov.tv



Some rights reserved. This work is available under a CC BY-NC-SA 3.0 IGO licence