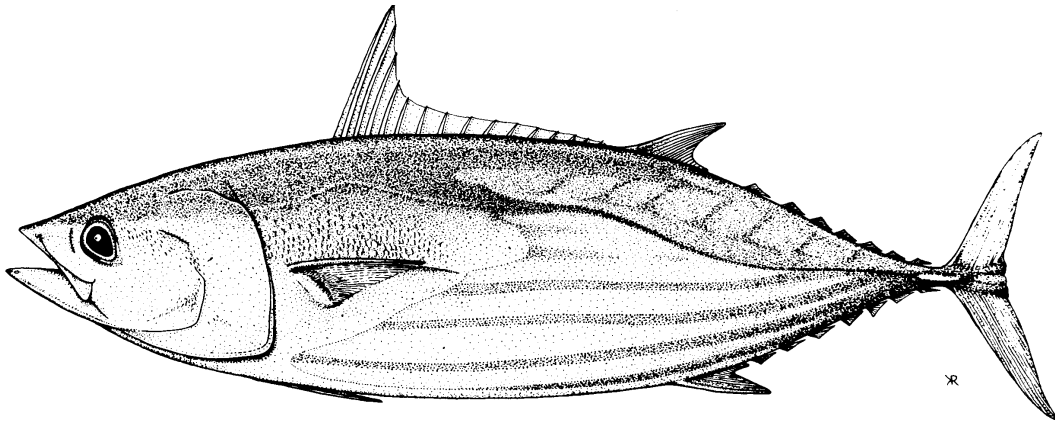




**WESTERN AND CENTRAL PACIFIC
TUNA BULLETIN
JANUARY 2007**



Western and Central Pacific Fisheries Commission
Pohnpei, Federated States of Micronesia
<http://www.wcpfc.org>
contact@wcpfc.org

© Copyright Western and Central Pacific Fisheries Commission, 2007

All rights for commercial / for profit reproduction or translation, in any form, reserved. The WCPFC authorises the partial reproduction or translation of this material for scientific, educational or research purposes, provided that WCPFC and the source document are properly acknowledged. Permission to reproduce the document and/or translate in whole, in any form, whether for commercial / for profit or non-profit purposes, must be requested in writing. Original WCPFC artwork may not be altered or separately published without permission.

Timothy Lawson [editor]
Oceanic Fisheries Programme
Secretariat of the Pacific Community
Noumea, New Caledonia
timl@spc.int

TABLE OF CONTENTS

MAPS

WCPFC Statistical Area	1
Longline Catch.....	2
Pole-and-Line Catch	3
Purse-Seine Catch.....	4

LONGLINE

Australia.....	5
China, offshore	7
Cook Islands	9
Federated States of Micronesia.....	11
Fiji Islands	13
French Polynesia.....	15
Japan	17
Republic of Korea.....	19
New Caledonia	21
Papua New Guinea	23
Samoa	25
Chinese Taipei, distant-water	27

POLE AND LINE

Japan	29
Solomon Islands	31

PURSE SEINE

Federated States of Micronesia.....	33
Japan	35
Republic of Korea.....	37
Papua New Guinea	39
Chinese Taipei	41
United States of America.....	43

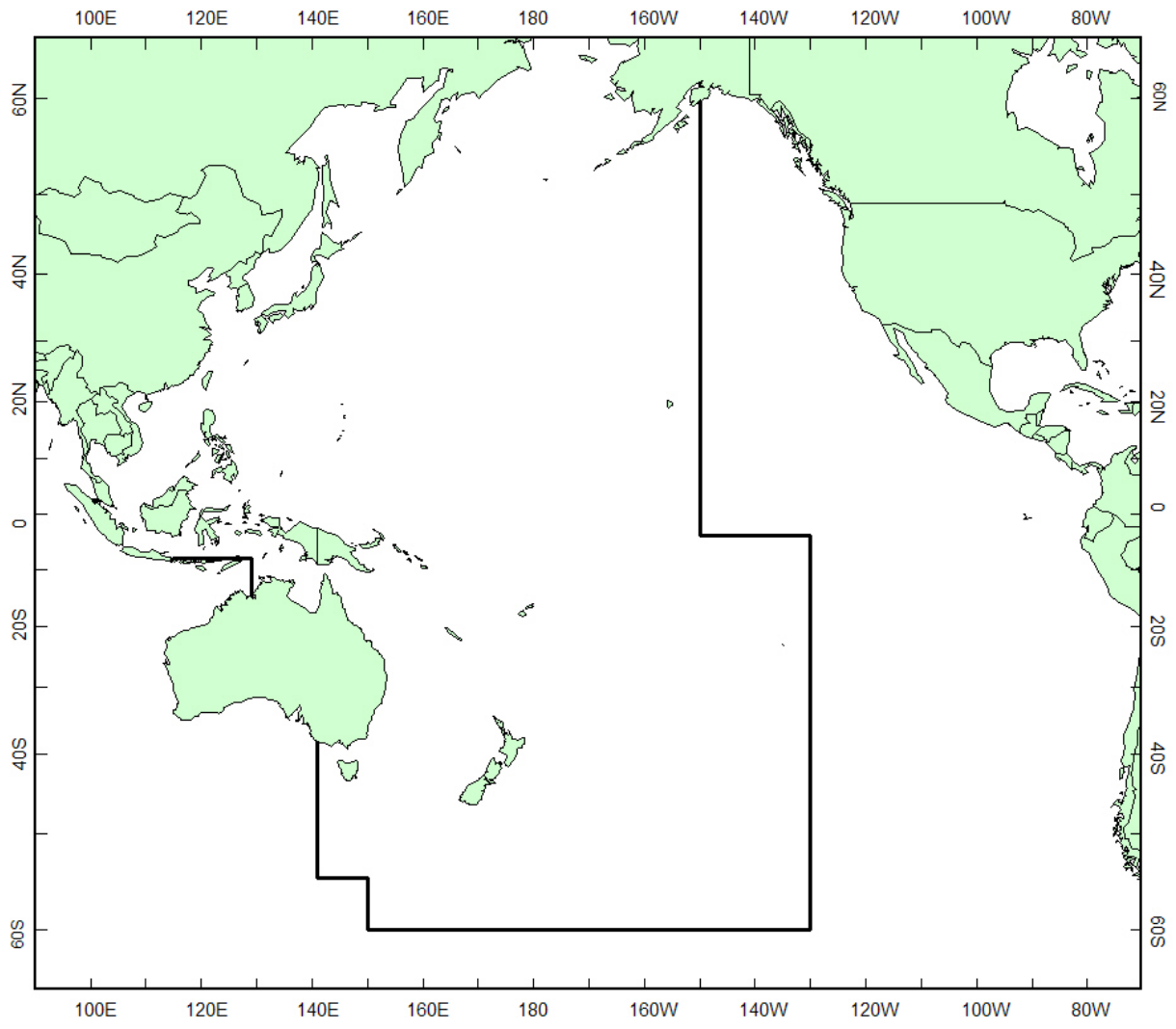


Figure 1. WCPFC Statistical Area

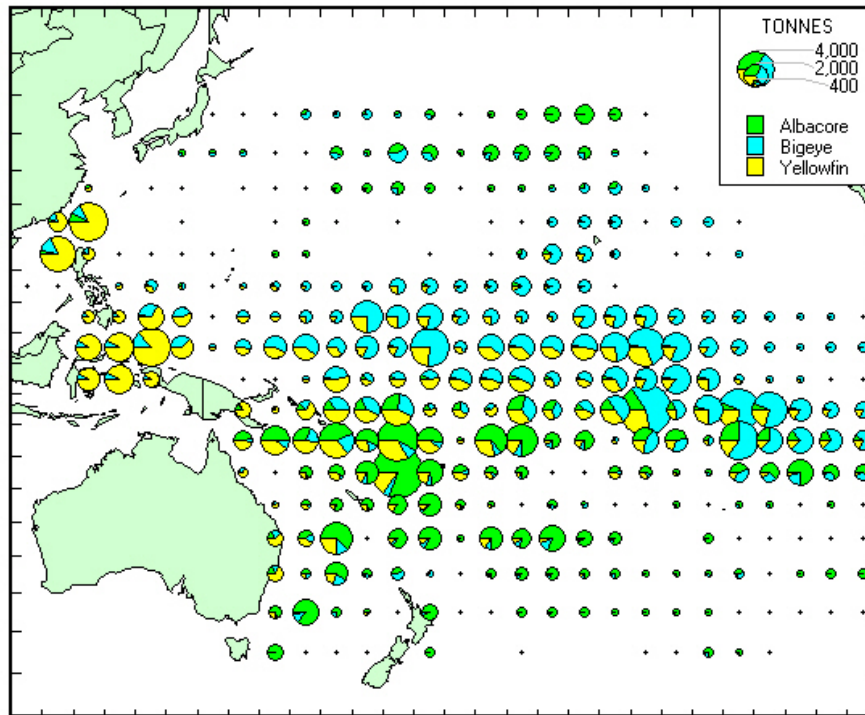


Figure 2. Longline catch in 2004, determined from data held at SPC on 31 December 2006

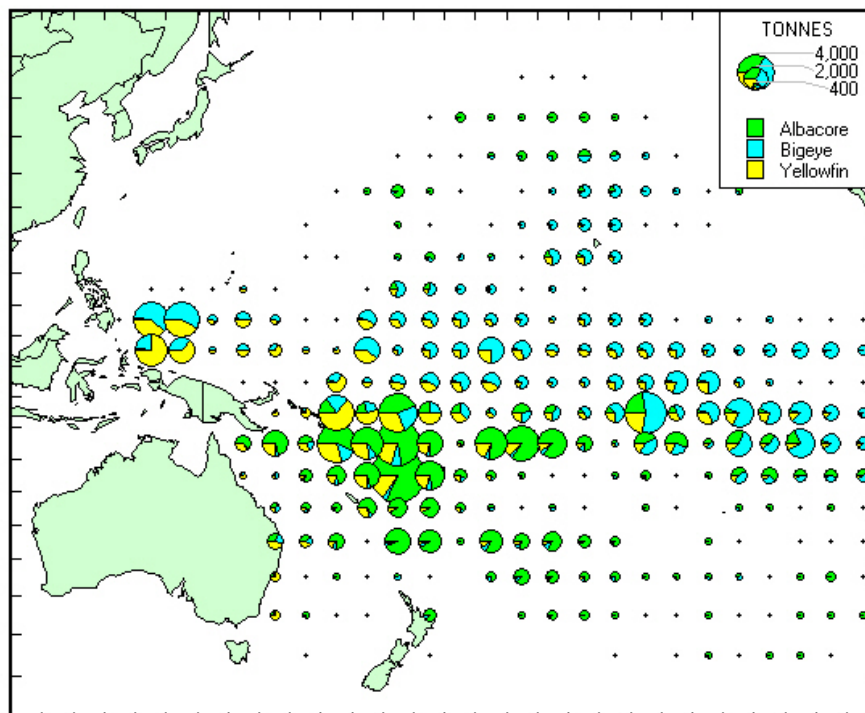


Figure 3. Longline catch in 2005, determined from data held at SPC on 31 December 2006

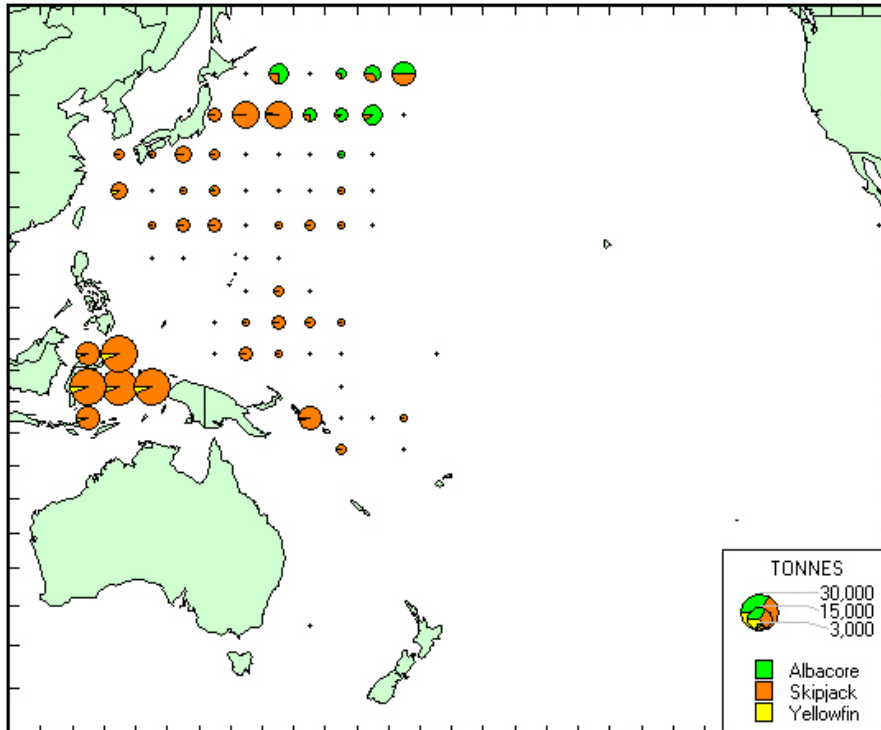


Figure 4. Pole-and-line catch in 2003, determined from data held at SPC on 31 December 2006

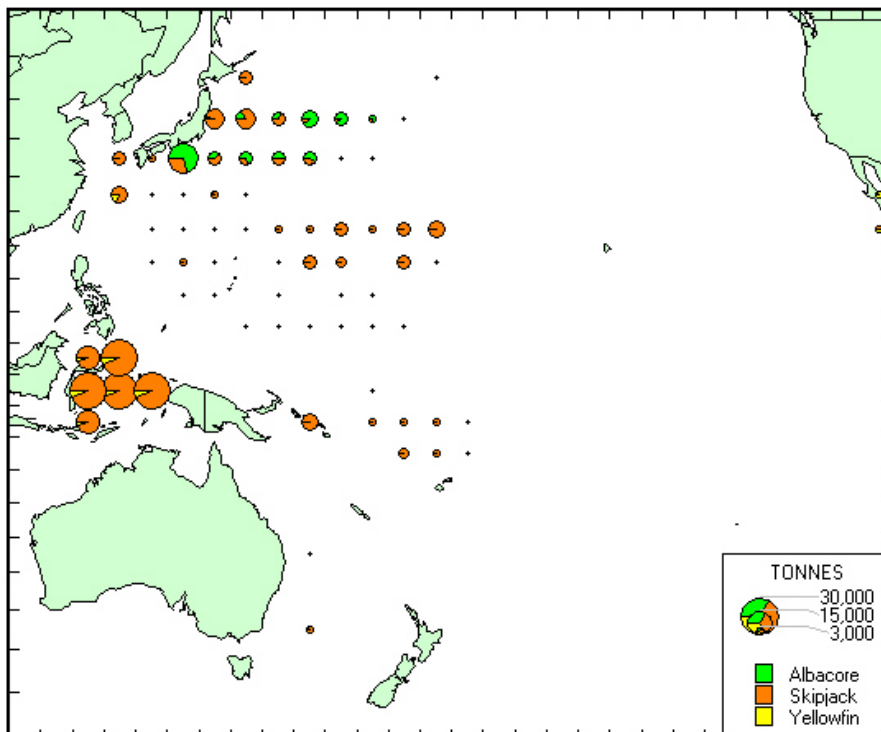


Figure 5. Pole-and-line catch in 2004, determined from data held at SPC on 31 December 2006

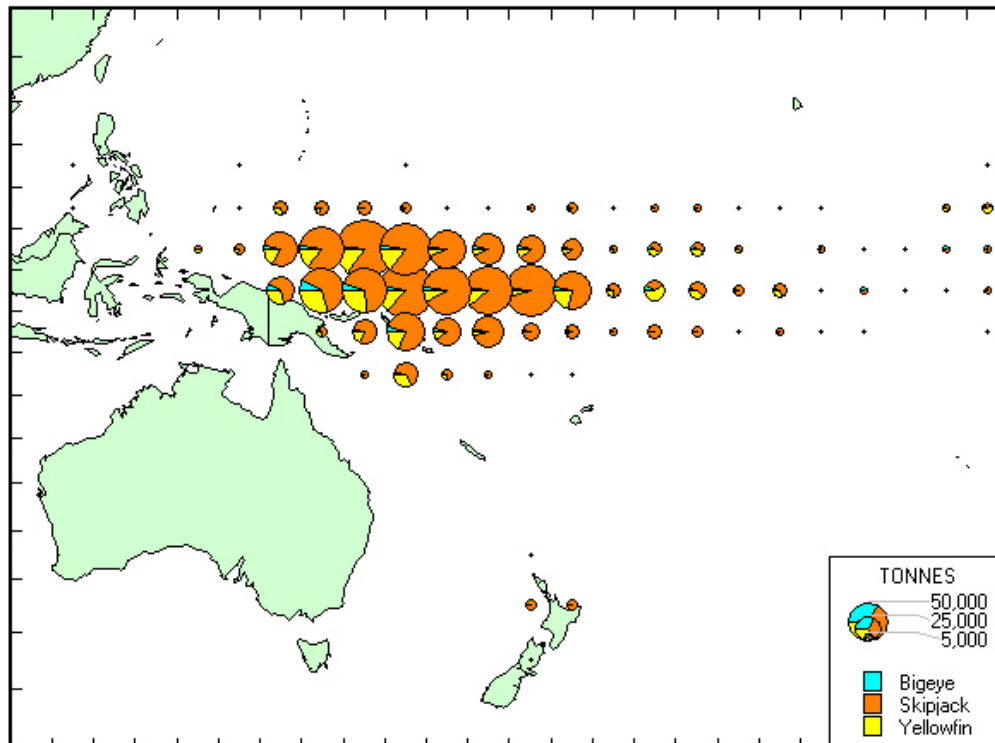


Figure 6. Purse-seine catch in 2005, determined from data held at SPC on 31 December 2006

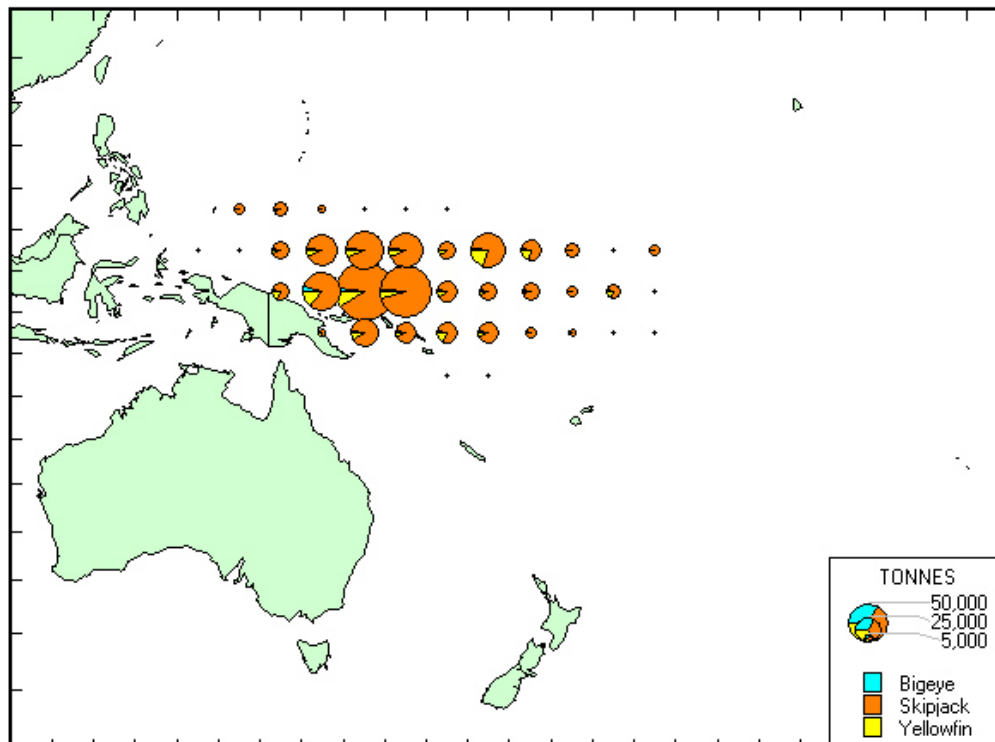


Figure 7. Purse-seine catch in 2006, determined from data held at SPC on 31 December 2006

LONGLINE: AUSTRALIA

The statistics in Table 1, which cover Australian longliners in the WCPFC Statistical Area (Figure 1), were determined from catch and effort data held at SPC on 31 December 2006; statistics for 2004–2005, but not 2006, have been raised to represent the total catch and effort. Figure 8 presents catch rates for albacore, bigeye and yellowfin. Figure 9 presents estimates of annual catches.

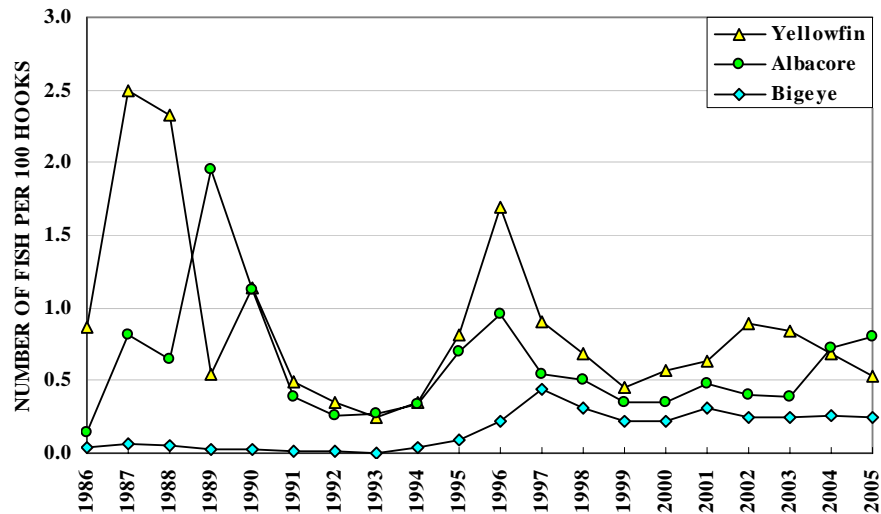


Figure 8. Australian longliner catch rates

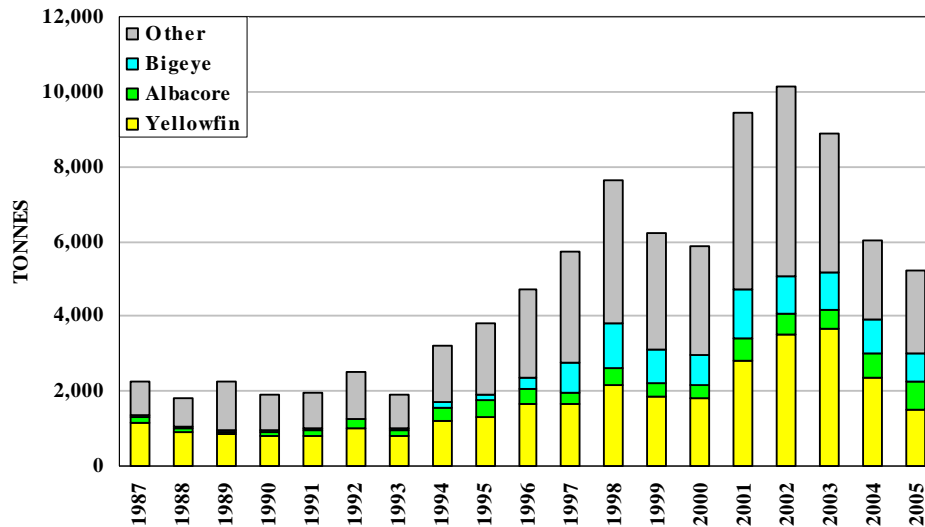


Figure 9. Catches by Australian longliners

Table 1. Catch statistics for Australian longliners. Units: Effort = hundreds of hooks; Catch = tonnes; CPUE = number of fish per 100 hooks.

MONTH	EFFORT	ALBACORE		BIGEYE		YELLOWFIN		OTHERS	TOTAL	
		CATCH	CPUE	CATCH	CPUE	CATCH	CPUE	CATCH	CATCH	CPUE
JAN/04	9,104	12	0.13	23	0.09	127	0.53	255	416	2.14
FEB	7,387	7	0.09	22	0.09	84	0.43	233	347	2.26
MAR	9,629	22	0.21	41	0.14	112	0.39	317	492	2.54
APR	11,190	39	0.32	96	0.29	132	0.36	349	616	3.10
MAY	13,870	86	0.60	172	0.45	185	0.53	324	767	2.88
JUN	11,905	162	1.54	128	0.39	121	0.35	294	705	3.47
JUL	12,837	196	1.70	158	0.43	192	0.49	402	948	3.99
AUG	10,967	132	1.48	104	0.37	253	0.84	346	835	4.25
SEP	11,702	93	0.88	58	0.20	435	1.60	310	896	4.00
OCT	8,513	31	0.38	46	0.24	209	1.01	232	519	2.86
NOV	9,358	23	0.27	30	0.11	200	0.87	332	585	2.73
DEC	6,760	10	0.15	18	0.09	157	0.87	211	396	2.71
TOT	123,222	812	0.72	896	0.26	2,207	0.68	3,606	7,521	3.16
AVG	10,269	68	0.65	75	0.24	184	0.69	301	627	3.08
JAN/05	7,294	9	0.13	26	0.11	109	0.60	251	395	2.38
FEB	8,962	15	0.17	47	0.17	134	0.47	281	477	2.26
MAR	8,462	14	0.18	60	0.22	126	0.48	252	451	2.20
APR	8,301	35	0.42	90	0.31	95	0.36	272	492	2.63
MAY	8,258	71	0.83	156	0.53	103	0.43	266	595	2.95
JUN	8,379	110	1.30	94	0.35	96	0.39	380	680	3.24
JUL	9,451	153	1.66	103	0.31	130	0.39	358	744	4.56
AUG	7,628	123	1.63	55	0.23	155	0.63	264	597	4.28
SEP	9,238	142	1.45	49	0.20	173	0.69	361	725	4.04
OCT	8,638	66	0.69	29	0.13	138	0.69	383	617	2.78
NOV	7,895	32	0.34	21	0.11	93	0.55	438	583	2.85
DEC	6,410	67	0.65	20	0.12	94	0.75	534	715	3.62
TOT	98,917	838	0.80	751	0.24	1,445	0.53	4,039	7,072	3.16
AVG	8,243	70	0.79	63	0.23	120	0.54	337	589	3.15
JAN/06	5,704	59	0.65	18	0.11	67	0.56	340	484	3.42
FEB	1,678	11	0.39	7	0.13	14	0.44	63	95	2.58
MAR	369	0	0.02	1	0.08	5	0.54	19	25	1.88
APR
MAY
JUN
JUL
AUG
SEP
OCT
NOV
DEC
TOT	7,751	71	0.56	26	0.11	85	0.54	421	603	3.16
AVG	2,584	24	0.35	9	0.11	28	0.52	140	201	2.62

LONGLINE: CHINA

The statistics in Table 2, which cover Chinese longliners in the WCPFC Statistical Area (Figure 1), were determined from catch and effort data held at SPC on 31 December 2006; statistics for 2004–2005, but not 2006, have been raised to represent the total catch and effort. Figure 10 presents catch rates for albacore, bigeye and yellowfin. Figure 11 presents estimates of annual catches.

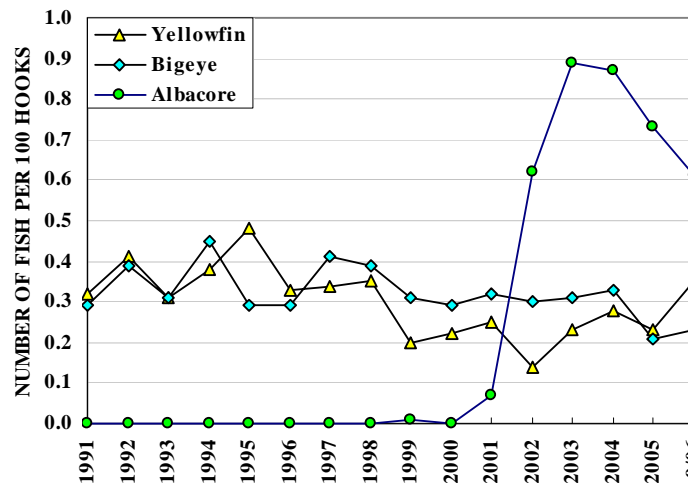


Figure 10. Chinese longliner catch rates

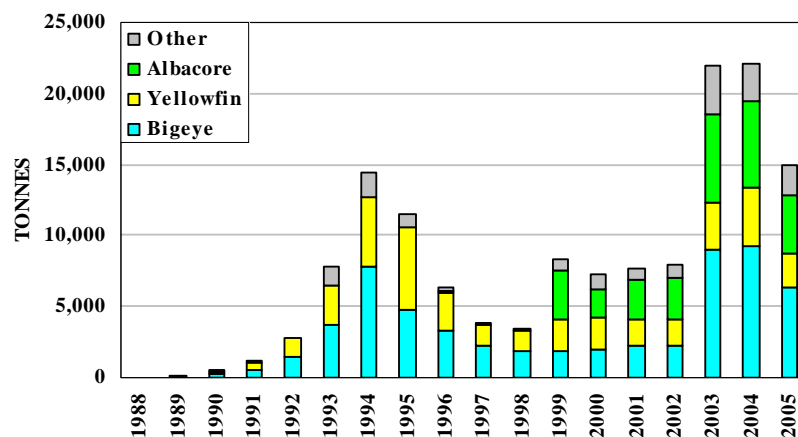


Figure 11. Catches by Chinese longliners

Table 2. Catch statistics for Chinese offshore longliners. Units: Effort = hundreds of hooks; Catch = tonnes; CPUE = number of fish per 100 hooks.

MONTH	EFFORT	ALBACORE		BIGEYE		YELLOWFIN		OTHERS	TOTAL	
		CATCH	CPUE	CATCH	CPUE	CATCH	CPUE	CATCH	CATCH	CPUE
JAN/04	54,736	865	1.08	378	0.21	179	0.14	183	1,605	1.58
FEB	41,583	423	0.70	313	0.25	153	0.16	125	1,015	1.24
MAR	32,966	200	0.38	224	0.21	197	0.29	147	769	1.12
APR	38,103	283	0.51	178	0.15	295	0.39	129	884	1.18
MAY	61,887	507	0.59	481	0.31	505	0.38	177	1,669	1.44
JUN	67,925	884	0.87	704	0.40	495	0.33	197	2,280	1.77
JUL	74,401	1,090	1.10	840	0.39	672	0.42	275	2,877	2.12
AUG	63,959	1,860	2.64	745	0.41	537	0.36	277	3,419	3.64
SEP	57,945	445	0.65	803	0.47	378	0.28	188	1,814	1.54
OCT	63,528	458	0.42	785	0.36	217	0.15	208	1,668	1.09
NOV	68,576	576	0.52	819	0.35	275	0.16	357	2,027	1.26
DEC	81,862	548	0.58	807	0.28	560	0.26	296	2,212	1.28
TOT	707,472	8,139	0.87	7,076	0.33	4,464	0.28	2,558	22,237	1.65
AVG	58,956	678	0.84	590	0.31	372	0.28	213	1,853	1.60
JAN/05	50,366	242	0.29	597	0.34	397	0.29	184	1,421	1.06
FEB	36,026	149	0.26	309	0.26	175	0.19	107	740	0.81
MAR	31,234	123	0.26	279	0.25	135	0.16	97	634	0.79
APR	25,839	269	0.74	169	0.17	162	0.23	81	681	1.30
MAY	49,099	474	0.63	416	0.25	387	0.28	279	1,556	1.45
JUN	44,532	602	0.89	270	0.19	356	0.30	206	1,434	1.62
JUL	40,697	608	1.06	222	0.16	272	0.30	192	1,294	1.76
AUG	38,998	838	1.75	236	0.16	254	0.29	207	1,535	2.49
SEP	53,017	683	0.94	304	0.17	204	0.16	259	1,451	1.55
OCT	61,163	504	0.52	424	0.23	221	0.15	269	1,418	1.14
NOV	60,420	644	0.68	445	0.20	265	0.17	268	1,623	1.31
DEC	52,525	599	0.74	318	0.17	335	0.26	217	1,469	1.37
TOT	543,915	5,736	0.73	3,988	0.21	3,164	0.23	2,367	15,255	1.39
AVG	45,326	478	0.73	332	0.21	264	0.23	197	1,271	1.39
JAN/06	18,133	208	0.74	114	0.20	172	0.38	85	579	1.54
FEB	12,944	94	0.48	80	0.19	120	0.38	55	350	1.26
MAR	17,357	129	0.48	123	0.19	171	0.41	47	470	1.19
APR	15,385	108	0.47	105	0.18	119	0.33	46	379	1.12
MAY	18,663	173	0.61	142	0.23	117	0.25	77	509	1.28
JUN	14,707	187	0.84	121	0.25	120	0.32	56	484	1.68
JUL	12,063	188	1.05	100	0.27	122	0.39	31	441	1.90
AUG	10,498	55	0.44	103	0.33	93	0.36	25	276	1.31
SEP	5,208	1	0.01	63	0.38	48	0.38	3	115	0.79
OCT
NOV
DEC
TOT	124,958	1,144	0.61	951	0.23	1,082	0.35	425	3,602	1.37
AVG	13,884	127	0.57	106	0.25	120	0.35	47	400	1.34

LONGLINE: COOK ISLANDS

The statistics in Table 3, which cover Cook Islands longliners in the WCPFC Statistical Area (Figure 1), were determined from catch and effort data held at SPC on 31 December 2006; statistics for 2004–2005, but not 2006, have been raised to represent the total catch and effort. Figure 12 presents catch rates for albacore, bigeye and yellowfin. Figure 13 presents estimates of annual catches.

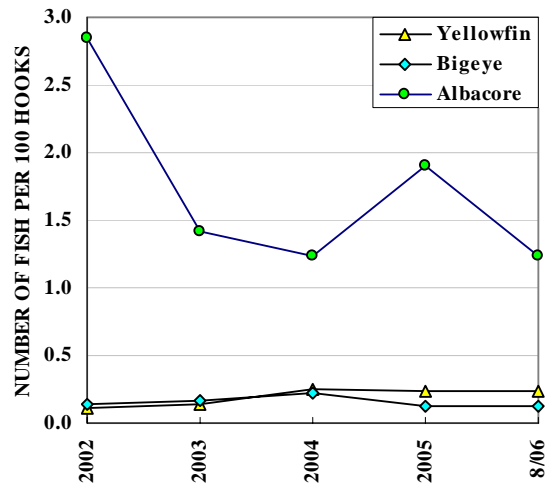


Figure 12. Cook Islands longliner catch rates

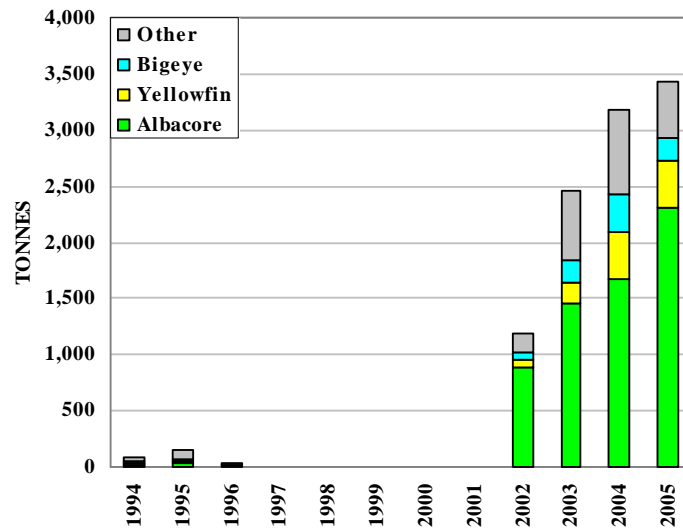


Figure 13. Catches by Cook Islands longliners

Table 3. Catch statistics for Cook Islands longliners. Units: Effort = hundreds of hooks; Catch = tonnes; CPUE = number of fish per 100 hooks.

MONTH	EFFORT	ALBACORE		BIGEYE		YELLOWFIN		OTHERS	TOTAL	
		CATCH	CPUE	CATCH	CPUE	CATCH	CPUE	CATCH	CATCH	CPUE
JAN/04	6,739	128	1.07	8	0.06	12	0.11	61	210	1.63
FEB	4,683	40	0.50	6	0.06	8	0.08	42	96	0.98
MAR	3,065	49	0.91	18	0.38	33	0.72	18	118	2.31
APR	4,415	74	0.96	23	0.30	32	0.41	32	162	1.98
MAY	7,800	186	1.39	47	0.29	34	0.21	62	328	2.25
JUN	6,199	206	1.93	20	0.14	25	0.16	61	312	2.80
JUL	5,578	150	1.46	23	0.20	59	0.51	61	293	3.28
AUG	6,236	153	1.37	39	0.34	65	0.47	68	324	3.24
SEP	7,339	191	1.53	58	0.43	64	0.37	81	395	3.08
OCT	7,486	168	1.34	37	0.23	29	0.15	64	298	2.13
NOV	10,620	209	1.15	43	0.18	44	0.15	109	406	2.02
DEC	8,586	117	0.82	14	0.08	16	0.07	88	236	1.43
TOT	78,746	1,672	1.23	337	0.22	422	0.25	748	3,178	2.25
AVG	6,562	139	1.20	28	0.22	35	0.28	62	265	2.26
JAN/05	5,776	59	0.60	10	0.08	9	0.06	44	122	1.14
FEB	3,303	24	0.39	6	0.07	7	0.07	41	78	0.98
MAR	4,636	18	0.23	8	0.07	19	0.12	52	96	0.77
APR	2,768	11	0.22	8	0.10	11	0.12	32	61	0.80
MAY	8,243	266	1.96	30	0.15	42	0.22	71	410	2.80
JUN	9,078	341	2.31	23	0.10	69	0.29	72	504	3.33
JUL	8,174	176	1.36	38	0.20	73	0.36	48	335	2.25
AUG	7,765	265	2.20	22	0.13	50	0.36	35	371	3.00
SEP	9,040	325	2.26	22	0.10	46	0.27	46	439	2.89
OCT	7,826	341	2.70	22	0.13	39	0.32	39	442	3.51
NOV	7,951	405	3.20	17	0.11	36	0.23	33	492	3.83
DEC	6,779	261	2.40	9	0.07	13	0.10	27	311	2.85
TOT	81,340	2,491	1.90	217	0.12	414	0.24	539	3,661	2.63
AVG	6,778	208	1.65	18	0.11	35	0.21	45	305	2.34
JAN/06	4,395	113	1.50	6	0.07	23	0.25	25	167	2.26
FEB	2,289	35	0.94	8	0.16	8	0.20	7	59	1.49
MAR	2,024	28	0.85	3	0.09	22	0.40	9	62	1.50
APR	2,861	35	0.77	9	0.16	17	0.23	15	77	1.49
MAY	2,286	69	1.79	9	0.16	16	0.23	14	108	2.67
JUN	1,313	26	1.12	3	0.10	3	0.10	10	42	1.72
JUL	198	14	4.05	1	0.15	1	0.16	2	18	6.39
AUG	60	1	1.02	0	0.12	0	0.12	0	2	2.23
SEP
OCT
NOV
DEC
TOT	15,425	322	1.24	39	0.12	91	0.24	83	534	1.97
AVG	1,928	40	1.50	5	0.12	11	0.21	10	67	2.47

LONGLINE: FEDERATED STATES OF MICRONESIA

The statistics in Table 4, which cover Federated States of Micronesia longliners in the WCPFC Statistical Area (Figure 1), were determined from catch and effort data held at SPC on 31 December 2006; statistics for 2004–2005, but not 2006, have been raised to represent the total catch and effort. Figure 14 presents catch rates for bigeye and yellowfin. Figure 15 presents estimates of annual catches.

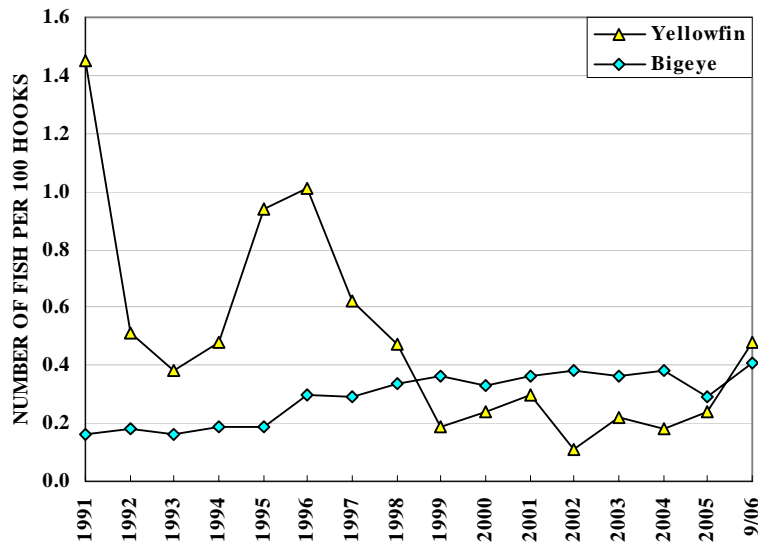


Figure 14. Federated States of Micronesia longliner catch rates

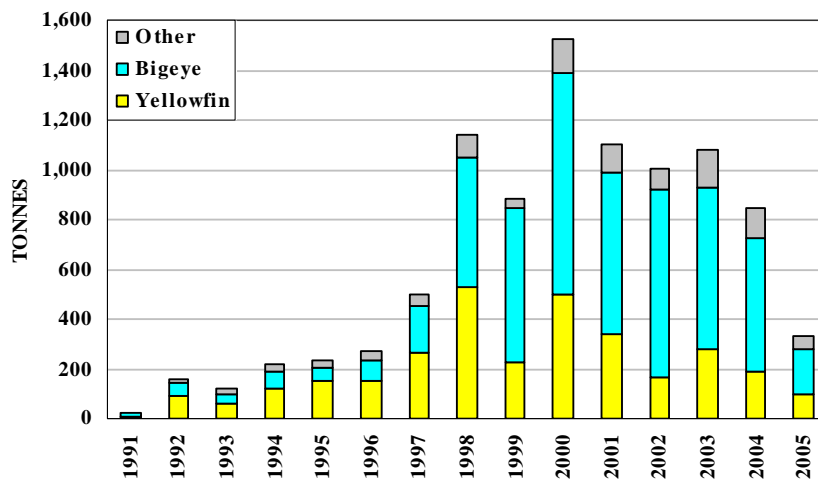


Figure 15. Catches by Federated States of Micronesia longliners

Table 4. Catch statistics for Federated States of Micronesia longliners. Units: Effort = hundreds of hooks; Catch = tonnes; CPUE = number of fish per 100 hooks.

MONTH	EFFORT	ALBACORE		BIGEYE		YELLOWFIN		OTHERS	TOTAL	
		CATCH	CPUE	CATCH	CPUE	CATCH	CPUE	CATCH	CATCH	CPUE
JAN/04	7,326	0	0.00	97	0.39	31	0.17	26	154	0.70
FEB	3,257	0	0.00	43	0.40	28	0.38	10	81	0.91
MAR	3,953	0	0.00	43	0.29	14	0.14	8	65	0.51
APR	3,624	0	0.00	21	0.17	10	0.11	7	38	0.36
MAY	3,759	0	0.00	37	0.28	12	0.13	7	56	0.48
JUN	2,064	0	0.00	31	0.42	4	0.09	9	44	0.66
JUL	3,951	0	0.00	60	0.46	10	0.11	11	81	0.68
AUG	2,461	0	0.00	39	0.52	8	0.14	6	53	0.75
SEP	2,794	0	0.00	37	0.45	14	0.22	8	59	0.77
OCT	3,790	0	0.00	57	0.43	9	0.10	8	74	0.61
NOV	2,842	0	0.00	40	0.42	17	0.26	8	65	0.78
DEC	2,558	0	0.00	39	0.45	27	0.42	6	72	0.96
TOT	42,378	0	0.00	542	0.38	185	0.18	115	842	0.67
AVG	3,531	0	0.00	45	0.39	15	0.19	10	70	0.68
JAN/05	2,834	0	0.00	31	0.31	24	0.33	9	64	0.77
FEB	1,205	0	0.00	9	0.21	7	0.26	4	21	0.60
MAR	695	0	0.00	7	0.26	3	0.15	1	11	0.45
APR	873	0	0.00	7	0.22	2	0.08	1	10	0.33
MAY	2,063	0	0.00	29	0.44	7	0.12	9	44	0.68
JUN	1,277	0	0.00	14	0.33	7	0.23	4	26	0.66
JUL	978	0	0.00	9	0.22	8	0.34	2	19	0.62
AUG	1,142	0	0.00	13	0.31	11	0.42	5	29	0.92
SEP	2,895	0	0.00	25	0.26	10	0.13	8	43	0.50
OCT	2,509	0	0.00	22	0.30	11	0.20	9	42	0.62
NOV	1,823	0	0.00	18	0.30	14	0.36	6	39	0.79
DEC	1,912	0	0.00	18	0.26	11	0.24	6	35	0.59
TOT	20,206	0	0.00	203	0.29	115	0.24	64	383	0.64
AVG	1,684	0	0.00	17	0.28	10	0.24	5	32	0.63
JAN/06	1,063	0	0.00	11	0.31	17	0.69	3	30	1.12
FEB	598	0	0.00	4	0.19	7	0.52	1	13	0.80
MAR	769	0	0.00	8	0.30	10	0.65	2	20	1.10
APR	1,544	0	0.00	15	0.35	12	0.34	2	29	0.78
MAY	1,689	0	0.00	19	0.36	7	0.21	3	30	0.63
JUN	1,900	0	0.00	24	0.46	18	0.40	7	48	0.98
JUL	2,430	0	0.00	31	0.44	39	0.67	8	78	1.23
AUG	1,612	0	0.00	24	0.59	17	0.46	3	45	1.12
SEP	894	0	0.00	12	0.41	10	0.46	1	23	0.90
OCT
NOV
DEC
TOT	12,499	0	0.00	148	0.41	137	0.48	30	315	0.98
AVG	1,389	0	0.00	16	0.38	15	0.49	3	35	0.96

LONGLINE: FIJI ISLANDS

The statistics in Table 5, which cover domestic Fiji Islands longliners and joint-venture longliners in the WCPFC Statistical Area (Figure 1), were determined from catch and effort data held at SPC on 31 December 2006; statistics for 2004–2005, but not 2006, have been raised to represent the total catch and effort. Figure 16 presents catch rates for albacore, bigeye and yellowfin. Figure 17 presents estimates of annual catches; catches for 1989–1999 have been underestimated.

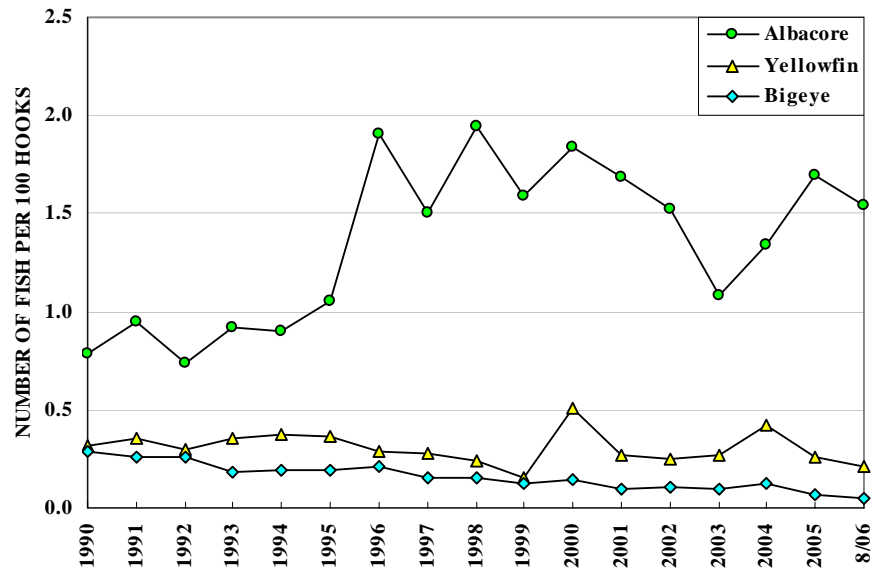


Figure 16. Fijian longliner catch rates

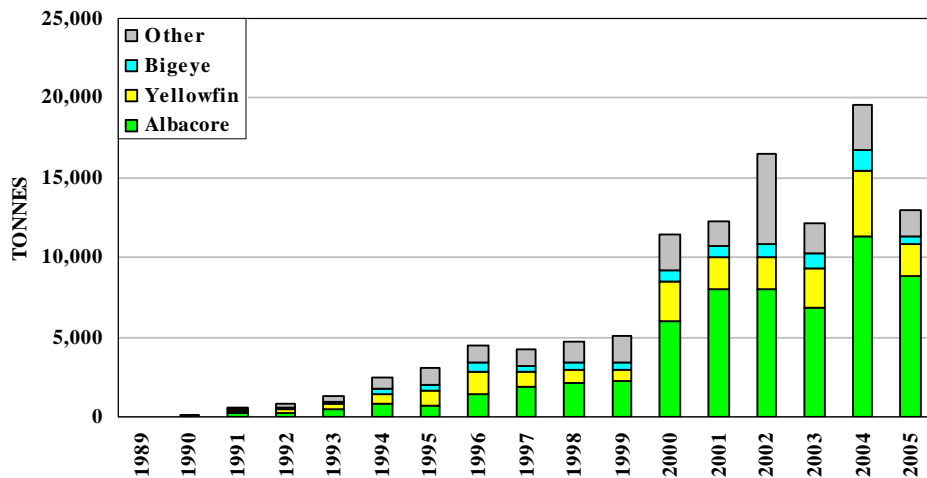


Figure 17. Catches by Fijian longliners

Table 5. Catch statistics for Fiji Islands longliners. Units: Effort = hundreds of hooks; Catch = tonnes; CPUE = number of fish per 100 hooks.

MONTH	EFFORT	ALBACORE		BIGEYE		YELLOWFIN		OTHERS	TOTAL	
		CATCH	CPUE	CATCH	CPUE	CATCH	CPUE	CATCH	CATCH	CPUE
JAN/04	45,947	873	1.11	57	0.05	155	0.16	157	1,242	1.63
FEB	29,909	389	0.78	54	0.08	124	0.22	95	662	1.36
MAR	33,268	305	0.57	118	0.18	288	0.48	105	815	1.43
APR	36,561	422	0.75	144	0.19	538	0.80	120	1,223	1.95
MAY	48,747	554	0.70	152	0.16	384	0.44	164	1,254	1.58
JUN	47,144	1,337	1.81	166	0.17	542	0.66	156	2,202	2.94
JUL	44,063	1,356	1.92	147	0.15	631	0.76	147	2,281	3.25
AUG	47,130	1,471	2.20	100	0.10	306	0.34	638	2,515	3.27
SEP	48,089	1,026	1.41	121	0.11	398	0.41	375	1,921	2.50
OCT	47,883	919	1.14	126	0.11	419	0.46	375	1,838	2.19
NOV	48,414	1,270	1.50	61	0.05	174	0.20	357	1,862	2.19
DEC	46,889	1,349	1.72	46	0.05	186	0.19	314	1,895	2.35
TOT	524,043	11,272	1.34	1,292	0.12	4,145	0.42	3,001	19,710	2.27
AVG	43,670	939	1.30	108	0.12	345	0.43	250	1,642	2.22
JAN/05	40,864	865	1.26	35	0.04	169	0.18	275	1,343	1.85
FEB	37,043	592	0.99	42	0.05	143	0.17	187	964	1.54
MAR	34,247	613	1.18	48	0.06	115	0.16	153	928	1.68
APR	32,860	777	1.55	68	0.09	297	0.37	140	1,282	2.31
MAY	46,543	1,384	1.92	74	0.07	678	0.59	260	2,396	3.11
JUN	42,331	1,359	2.17	146	0.14	577	0.55	205	2,287	3.27
JUL	48,638	1,606	2.24	139	0.11	319	0.33	234	2,298	3.10
AUG	47,617	1,674	2.37	82	0.07	201	0.21	267	2,224	3.16
SEP	45,975	1,178	1.77	75	0.07	183	0.19	300	1,736	2.58
OCT	46,607	994	1.36	85	0.07	163	0.18	255	1,496	2.07
NOV	48,023	1,279	1.62	50	0.04	180	0.14	287	1,797	2.28
DEC	50,388	1,282	1.56	36	0.03	151	0.12	305	1,775	2.13
TOT	521,136	13,602	1.70	880	0.07	3,175	0.26	2,867	20,524	2.46
AVG	43,428	1,134	1.67	73	0.07	265	0.27	239	1,710	2.42
JAN/06	43,228	970	1.42	43	0.05	222	0.20	262	1,496	2.04
FEB	19,392	395	1.36	13	0.03	95	0.22	116	620	1.98
MAR	778	15	1.22	2	0.09	5	0.28	3	25	1.79
APR	1,006	24	1.72	2	0.18	5	0.28	2	34	2.33
MAY	876	38	3.06	0	0.02	5	0.38	3	46	3.69
JUN	1,229	48	2.83	1	0.06	10	0.32	7	66	3.91
JUL	1,419	87	4.37	0	0.01	2	0.04	6	96	4.85
AUG	725	35	3.67	0	0.01	0	0.03	1	37	3.78
SEP
OCT
NOV
DEC
TOT	68,654	1,612	1.54	63	0.05	344	0.21	400	2,420	2.15
AVG	8,582	202	2.46	8	0.06	43	0.22	50	302	3.04

LONGLINE: FRENCH POLYNESIA

The statistics in Table 6, which cover French Polynesian longliners in the WCPFC Statistical Area (Figure 1), were determined from catch and effort data held at SPC on 31 December 2006; statistics for 2004–2005, but not 2006 have been raised to represent the total catch and effort. Figure 18 presents catch rates for albacore, bigeye and yellowfin. Figure 19 presents estimates of annual catches.

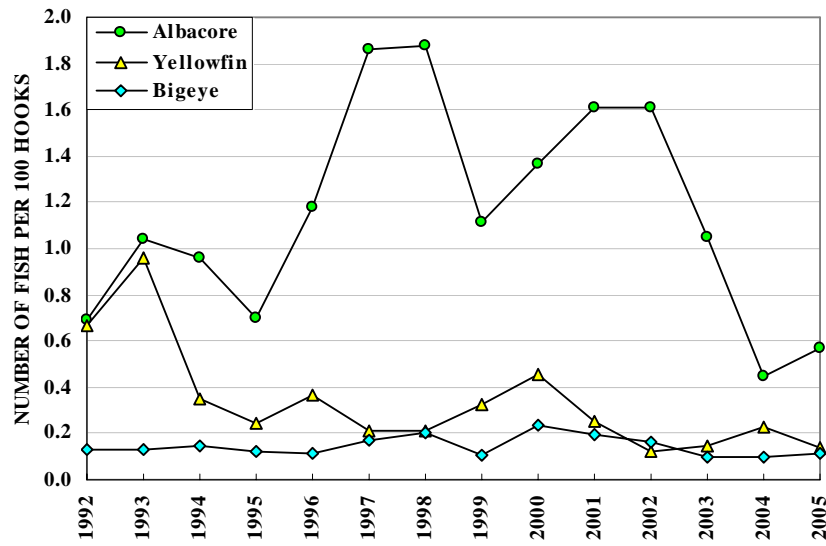


Figure 18. French Polynesian longliner catch rates

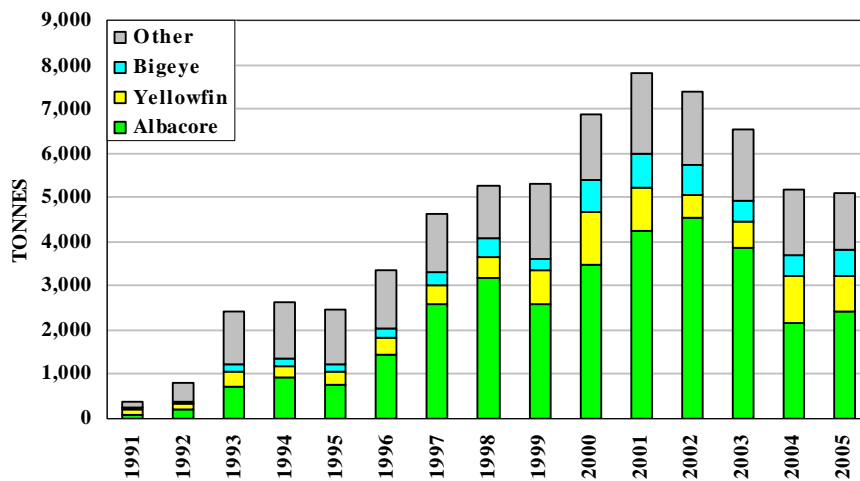


Figure 19. Catches by French Polynesian longliners

Table 6. Catch statistics for French Polynesian longliners. Units: Effort = hundreds of hooks; Catch = tonnes; CPUE = number of fish per 100 hooks.

MONTH	EFFORT	ALBACORE		BIGEYE		YELLOWFIN		OTHERS	TOTAL	
		CATCH	CPUE	CATCH	CPUE	CATCH	CPUE	CATCH	CATCH	CPUE
JAN/04	12,660	103	0.39	19	0.07	46	0.21	86	254	2.01
FEB	17,403	100	0.27	28	0.07	52	0.21	80	259	1.26
MAR	21,976	127	0.29	37	0.08	88	0.25	84	336	1.64
APR	20,451	153	0.38	34	0.08	132	0.40	94	413	2.42
MAY	22,428	246	0.61	51	0.11	129	0.34	108	534	2.14
JUN	23,220	259	0.55	46	0.09	108	0.23	87	499	1.83
JUL	22,455	245	0.51	50	0.09	75	0.15	83	454	2.27
AUG	22,264	206	0.44	64	0.13	87	0.13	106	463	2.66
SEP	16,599	168	0.51	56	0.16	88	0.22	73	385	1.94
OCT	18,415	230	0.62	64	0.15	101	0.21	57	452	2.06
NOV	19,346	214	0.48	33	0.07	94	0.18	128	469	1.68
DEC	13,579	99	0.33	21	0.06	50	0.14	54	223	0.87
TOT	230,796	2,150	0.45	503	0.10	1,049	0.23	1,039	4,741	1.94
AVG	19,233	179	0.45	42	0.10	87	0.22	87	395	1.90
JAN/05	13,308	97	0.36	35	0.11	54	0.15	65	252	1.01
FEB	16,776	115	0.34	38	0.09	77	0.17	94	323	1.11
MAR	18,675	102	0.28	46	0.10	115	0.24	108	372	1.18
APR	18,016	152	0.42	51	0.12	112	0.22	88	403	1.47
MAY	15,829	216	0.76	68	0.18	125	0.27	60	469	1.96
JUN	17,787	213	0.66	72	0.16	107	0.21	54	445	1.48
JUL	16,487	197	0.55	59	0.13	37	0.07	58	352	1.11
AUG	18,410	205	0.51	60	0.11	43	0.06	71	378	1.05
SEP	17,905	229	0.64	60	0.13	50	0.09	59	398	1.13
OCT	18,523	260	0.70	39	0.08	36	0.08	51	386	1.14
NOV	18,694	305	0.78	38	0.07	27	0.06	60	430	1.14
DEC	16,685	266	0.77	27	0.06	21	0.06	51	364	1.16
TOT	207,096	2,358	0.57	591	0.11	804	0.14	821	4,573	1.24
AVG	17,258	196	0.56	49	0.11	67	0.14	68	381	1.25
JAN/06	8,525	89	0.55	19	0.09	18	0.10	34	161	0.92
FEB	8,526	80	0.50	27	0.12	34	0.20	27	167	1.13
MAR	4,937	43	0.45	11	0.10	21	0.19	12	87	0.88
APR	257	8	1.74	1	0.14	0	0.03	1	10	1.95
MAY
JUN
JUL
AUG
SEP
OCT
NOV
DEC
TOT	22,245	220	0.52	58	0.11	74	0.16	74	425	1.00
AVG	5,561	55	0.81	14	0.11	18	0.13	18	106	1.22

LONGLINE: JAPAN

The statistics in Table 7, which cover Japanese offshore and distant-water longliners in the WCPFC Statistical Area (Figure 1), were determined from catch and effort data held at SPC on 31 December 2006; statistics for 2002–2004 have been raised to represent the total catch and effort. Figure 20 presents catch rates for albacore, bigeye and yellowfin. Figure 21 presents estimates of annual catches.

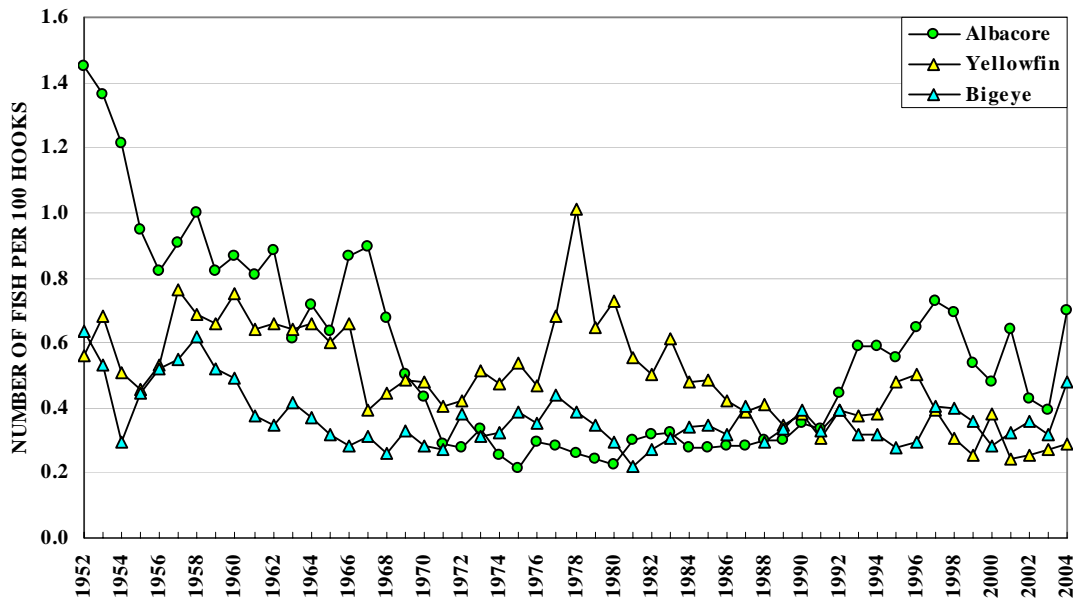


Figure 20. Japanese offshore and distant-water longliner catch rates

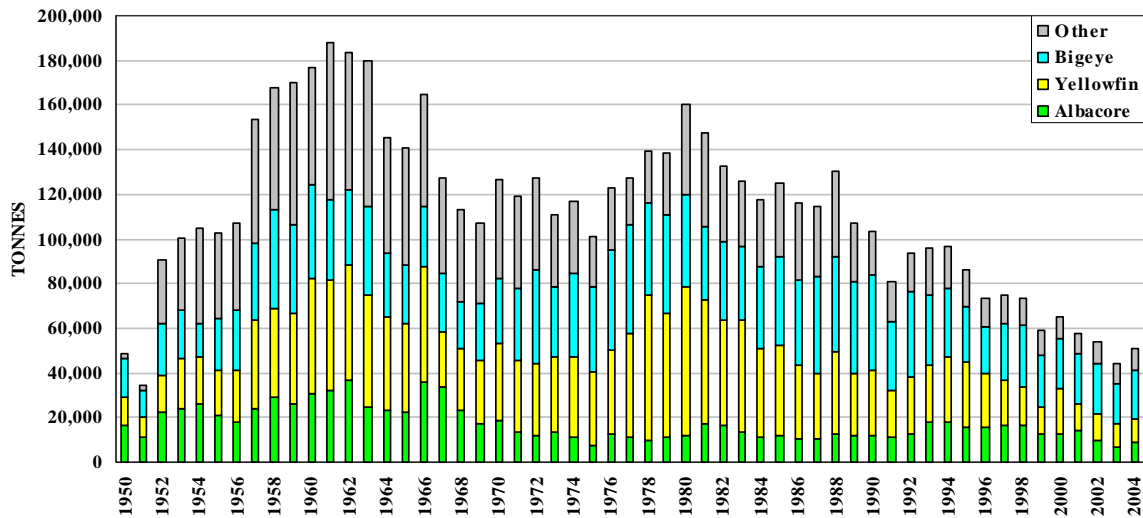


Figure 21. Catches by Japanese offshore and distant-water longliners

Table 7. Catch statistics for Japanese offshore and distant-water longliners. Units: Effort = hundreds of hooks; Catch = tonnes; CPUE = number of fish per 100 hooks.

MONTH	EFFORT	ALBACORE		BIGEYE		YELLOWFIN		OTHERS	TOTAL	
		CATCH	CPUE	CATCH	CPUE	CATCH	CPUE	CATCH	CATCH	CPUE
JAN/02	103,931	1,111	0.76	1,832	0.47	427	0.17	597	3,967	1.52
FEB	107,729	959	0.63	1,900	0.46	580	0.22	765	4,205	1.45
MAR	121,427	712	0.42	1,893	0.41	724	0.25	829	4,157	1.20
APR	154,930	997	0.52	2,259	0.32	808	0.22	1,073	5,136	1.18
MAY	191,757	999	0.43	1,986	0.23	614	0.13	1,247	4,847	0.90
JUN	175,823	751	0.35	2,023	0.25	936	0.22	1,148	4,858	0.93
JUL	147,076	605	0.33	2,061	0.29	869	0.24	1,065	4,600	0.99
AUG	126,477	452	0.26	2,018	0.33	1,087	0.36	420	3,977	1.01
SEP	108,644	225	0.14	2,421	0.47	1,174	0.45	489	4,309	1.16
OCT	92,445	290	0.22	1,897	0.49	758	0.35	537	3,482	1.17
NOV	96,544	703	0.51	2,161	0.54	612	0.27	434	3,910	1.43
DEC	101,174	827	0.58	1,964	0.48	774	0.34	581	4,146	1.54
TOT	1,527,957	8,632	0.42	24,414	0.37	9,363	0.26	9,184	51,593	1.16
AVG	127,330	719	0.43	2,034	0.39	780	0.27	765	4,299	1.21
JAN/03	102,078	682	0.47	2,151	0.50	744	0.28	733	4,310	1.43
FEB	107,458	517	0.34	2,222	0.51	914	0.33	829	4,482	1.34
MAR	117,919	358	0.22	1,965	0.43	1,060	0.35	860	4,243	1.13
APR	129,940	428	0.26	1,437	0.27	1,152	0.35	886	3,903	0.99
MAY	159,502	577	0.30	1,443	0.22	1,028	0.26	960	4,007	0.87
JUN	149,552	651	0.36	1,107	0.18	911	0.24	1,061	3,730	0.90
JUL	144,569	720	0.42	1,322	0.23	1,000	0.27	1,020	4,062	1.04
AUG	110,811	654	0.45	1,311	0.32	824	0.29	498	3,287	1.14
SEP	100,875	354	0.27	1,247	0.33	600	0.23	471	2,672	0.91
OCT	108,595	348	0.23	1,448	0.34	557	0.22	714	3,066	0.93
NOV	101,787	666	0.49	1,554	0.39	480	0.21	655	3,356	1.21
DEC	86,389	1,133	0.95	1,389	0.44	405	0.21	576	3,503	1.74
TOT	1,419,474	7,086	0.38	18,594	0.33	9,675	0.27	9,264	44,619	1.11
AVG	118,289	591	0.40	1,550	0.35	806	0.27	772	3,718	1.14
JAN/04	94,239	751	0.57	1,586	0.49	616	0.25	856	3,808	1.48
FEB	96,317	434	0.32	1,796	0.52	608	0.24	720	3,558	1.23
MAR	99,507	484	0.35	1,752	0.47	739	0.28	794	3,769	1.25
APR	95,734	928	0.80	1,431	0.41	527	0.21	682	3,568	1.53
MAY	108,444	1,068	0.84	1,514	0.36	406	0.14	651	3,640	1.44
JUN	109,322	1,016	0.79	1,970	0.44	713	0.25	831	4,530	1.63
JUL	103,411	1,101	0.91	1,788	0.48	1,189	0.44	788	4,867	1.96
AUG	98,100	1,093	0.89	1,963	0.55	1,545	0.60	527	5,127	2.15
SEP	97,813	560	0.43	1,949	0.56	1,232	0.48	666	4,407	1.59
OCT	107,196	479	0.33	2,387	0.62	940	0.33	922	4,729	1.44
NOV	98,381	976	0.70	2,049	0.62	570	0.21	974	4,569	1.72
DEC	85,052	1,249	1.03	1,520	0.52	464	0.20	755	3,989	1.95
TOT	1,193,517	10,140	0.66	21,703	0.50	9,549	0.30	9,167	50,559	1.61
AVG	99,460	845	0.66	1,809	0.50	796	0.30	764	4,213	1.61

LONGLINE: REPUBLIC OF KOREA

The statistics in Table 8, which cover Korean longliners in the WCPFC Statistical Area (Figure 1), were determined from catch and effort data held at SPC on 31 December 2006; statistics for 2003–2005 have been raised to represent the total catch and effort. Figure 22 presents catch rates for albacore, bigeye and yellowfin. Figure 23 presents estimates of annual catches.

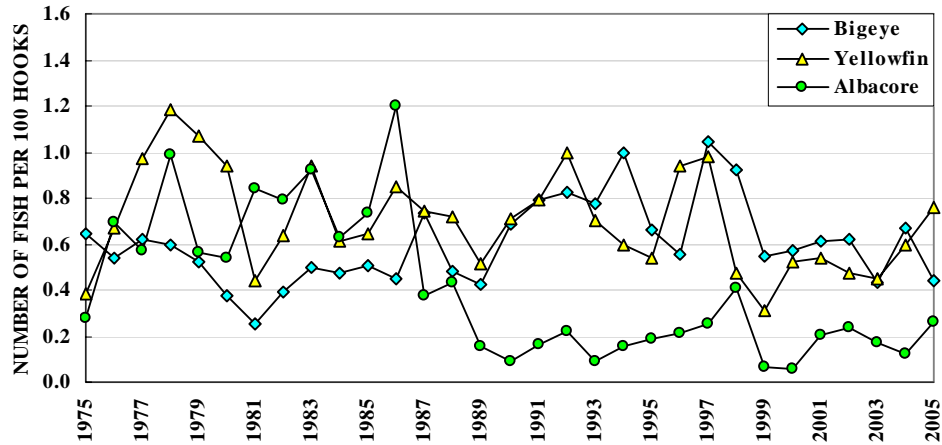


Figure 22. Republic of Korea distant-water longliner catch rates

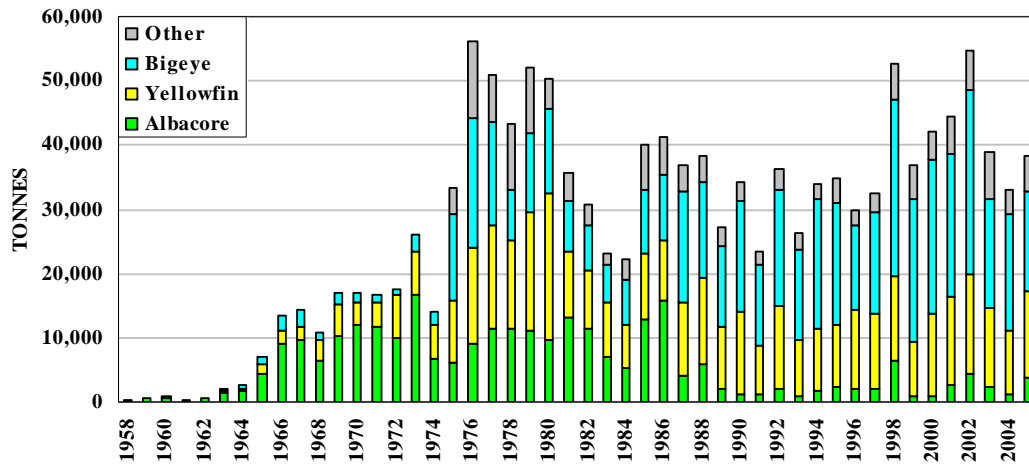


Figure 23. Catches by Republic of Korea distant-water longliners

Table 8. Catch statistics for Republic of Korea distant-water longliners. Units: Effort = hundreds of hooks; Catch = tonnes; CPUE = number of fish per 100 hooks.

MONTH	EFFORT	ALBACORE		BIGEYE		YELLOWFIN		OTHERS	TOTAL	
		CATCH	CPUE	CATCH	CPUE	CATCH	CPUE	CATCH	CATCH	CPUE
JAN/03	105,953	410	0.28	2,196	0.64	1,667	0.50	799	5,073	1.58
FEB	110,143	259	0.16	2,302	0.59	1,357	0.55	810	4,729	1.47
MAR	116,859	91	0.05	2,356	0.56	842	0.41	725	4,015	1.16
APR	101,277	250	0.18	1,532	0.44	747	0.29	663	3,192	1.03
MAY	163,352	264	0.12	1,430	0.26	1,387	0.33	821	3,902	0.81
JUN	107,696	442	0.29	828	0.30	2,218	0.83	643	4,131	1.55
JUL	111,522	192	0.35	1,229	0.33	1,080	0.41	684	3,186	1.22
AUG	98,012	206	0.14	1,313	0.41	520	0.23	580	2,620	0.89
SEP	75,645	103	0.10	1,042	0.40	670	0.45	365	2,180	1.04
OCT	80,415	120	0.11	1,131	0.43	694	0.64	396	2,341	1.29
NOV	55,179	39	0.05	901	0.59	518	0.53	264	1,721	1.31
DEC	56,562	53	0.06	942	0.44	417	0.32	297	1,709	0.91
TOT	1,182,615	2,430	0.17	17,204	0.44	12,117	0.45	7,047	38,798	1.18
AVG	98,551	203	0.16	1,434	0.45	1,010	0.46	587	3,233	1.19
JAN/04	88,975	60	0.05	1,461	0.44	518	0.26	421	2,460	0.84
FEB	64,700	11	0.01	1,155	0.51	291	0.21	269	1,726	0.82
MAR	71,924	33	0.04	1,372	0.58	436	0.28	270	2,110	0.98
APR	38,884	49	0.09	828	0.69	240	0.28	128	1,245	1.13
MAY	66,269	30	0.03	1,716	1.69	339	0.23	159	2,244	2.01
JUN	77,160	199	0.20	1,653	0.80	1,225	0.78	199	3,276	1.85
JUL	85,701	478	0.42	1,182	0.56	2,274	1.39	186	4,120	2.44
AUG	101,678	296	0.22	1,622	0.63	1,993	1.01	347	4,258	1.95
SEP	95,131	162	0.12	1,592	0.64	1,687	0.85	466	3,906	1.73
OCT	89,218	98	0.07	1,449	0.59	1,182	0.58	508	3,236	1.39
NOV	76,331	36	0.03	1,171	0.57	724	0.39	406	2,336	1.12
DEC	61,551	59	0.06	994	0.58	548	0.35	351	1,953	1.14
TOT	917,522	1,512	0.12	16,193	0.67	11,457	0.60	3,709	32,871	1.49
AVG	76,460	126	0.11	1,349	0.69	955	0.55	309	2,739	1.45
JAN/05	133,974	136	0.06	2,138	0.51	888	0.25	770	3,932	0.97
FEB	123,273	593	0.23	1,892	0.46	651	0.19	580	3,716	1.00
MAR	106,215	61	0.04	1,376	0.37	642	0.21	519	2,598	0.73
APR	89,697	181	0.16	1,329	0.45	838	0.36	342	2,690	1.06
MAY	100,671	704	0.54	1,044	0.32	1,183	0.50	348	3,279	1.44
JUN	93,891	902	0.77	1,027	0.37	2,080	1.02	336	4,345	2.25
JUL	115,362	899	0.63	1,432	0.40	2,579	1.07	520	5,429	2.22
AUG	104,284	269	0.19	1,353	0.39	1,391	0.63	501	3,515	1.33
SEP	86,664	164	0.13	1,294	0.45	767	3.58	403	2,627	4.28
OCT	75,615	43	0.04	1,354	0.55	535	0.33	281	2,214	1.01
NOV	63,093	9	0.01	1,389	0.67	599	0.56	201	2,198	1.33
DEC	31,934	12	0.02	544	0.58	568	1.00	90	1,215	1.68
TOT	1,124,673	3,973	0.26	16,173	0.44	12,722	0.76	4,890	37,758	1.57
AVG	93,723	331	0.24	1,348	0.46	1,060	0.81	408	3,147	1.61

LONGLINE: NEW CALEDONIA

The statistics in Table 9, which cover New Caledonian longliners in the WCPFC Statistical Area (Figure 1), were determined from catch and effort data held at SPC on 31 December 2006; statistics for 2004–2005, but not 2006, have been raised to represent the total catch and effort. Figure 24 presents catch rates for albacore, bigeye and yellowfin. Figure 25 presents estimates of annual catches.

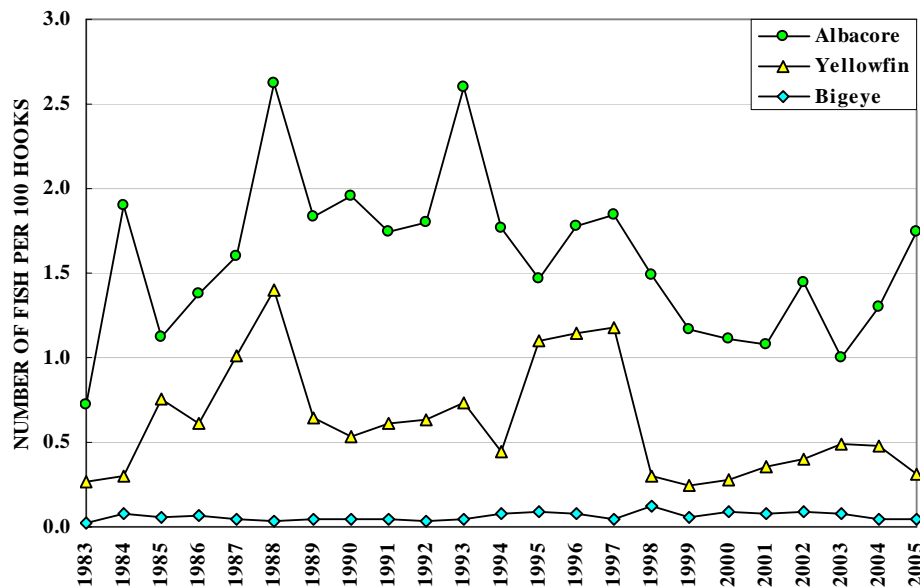


Figure 24. New Caledonian longliner catch rates

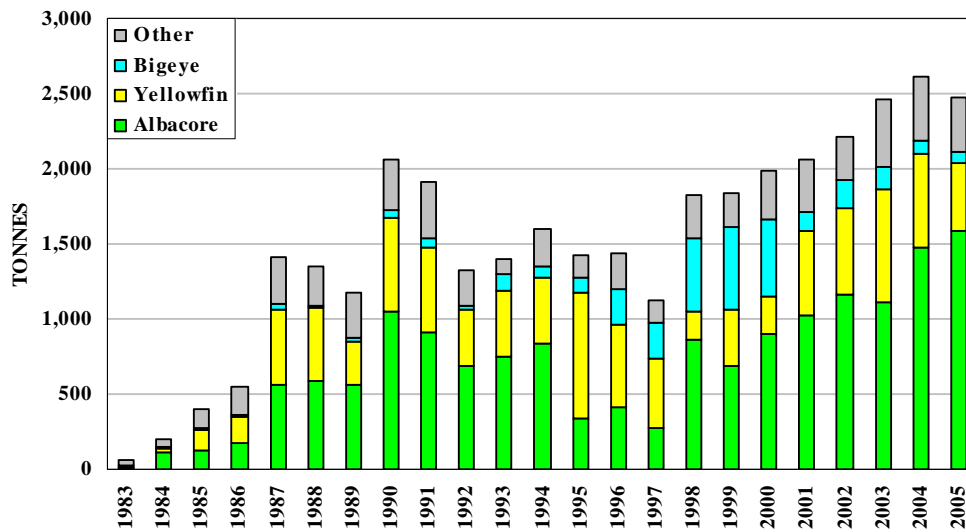


Figure 25. Catches by New Caledonian longliners

Table 9. Catch statistics for New Caledonian longliners. Units: Effort = hundreds of hooks; Catch = tonnes; CPUE = number of fish per 100 hooks.

MONTH	EFFORT	ALBACORE		BIGEYE		YELLOWFIN		OTHERS	TOTAL	
		CATCH	CPUE	CATCH	CPUE	CATCH	CPUE	CATCH	CATCH	CPUE
JAN/04	5,192	153	1.67	9	0.05	57	0.49	45	264	2.65
FEB	5,177	118	1.27	8	0.04	70	0.58	33	229	2.14
MAR	4,636	44	0.53	7	0.05	39	0.37	25	115	1.17
APR	5,717	70	0.68	19	0.10	49	0.38	30	167	1.34
MAY	5,207	44	0.48	12	0.06	48	0.43	41	145	1.23
JUN	4,952	140	1.55	14	0.09	40	0.36	38	233	2.27
JUL	5,901	181	1.69	9	0.05	62	0.48	30	282	2.39
AUG	5,889	197	1.96	6	0.03	104	0.81	29	337	2.98
SEP	4,858	85	1.08	6	0.03	33	0.28	30	155	1.65
OCT	5,564	115	1.15	3	0.01	65	0.50	39	221	1.90
NOV	4,655	124	1.47	4	0.03	56	0.51	46	230	2.34
DEC	3,836	155	2.22	2	0.01	42	0.46	43	242	3.08
TOT	61,584	1,426	1.30	98	0.05	665	0.48	431	2,620	2.09
AVG	5,132	119	1.31	8	0.05	55	0.47	36	218	2.09
JAN/05	4,359	77	0.95	5	0.04	52	0.44	31	166	1.76
FEB	4,843	79	0.83	6	0.04	67	0.50	29	181	1.63
MAR	4,414	29	0.34	9	0.06	94	0.80	19	150	1.38
APR	4,270	53	0.64	12	0.09	108	0.87	19	192	1.77
MAY	5,025	177	1.95	14	0.08	56	0.36	24	272	2.58
JUN	4,742	161	1.96	10	0.06	23	0.15	36	229	2.43
JUL	4,402	190	2.69	9	0.05	4	0.03	34	237	3.00
AUG	4,850	263	3.21	4	0.02	9	0.06	33	309	3.51
SEP	3,853	152	2.46	4	0.02	11	0.09	24	190	2.76
OCT	4,359	138	1.73	2	0.01	8	0.06	43	191	2.05
NOV	3,208	164	2.62	2	0.02	13	0.11	50	229	3.23
DEC	2,816	101	1.94	2	0.01	9	0.11	38	150	2.60
TOT	51,139	1,582	1.75	79	0.05	454	0.31	379	2,494	2.37
AVG	4,262	132	1.78	7	0.04	38	0.30	32	208	2.39
JAN/06	3,236	104	1.87	2	0.02	13	0.14	30	149	2.47
FEB	3,100	43	0.79	4	0.05	49	0.57	25	120	1.86
MAR	2,707	33	0.69	3	0.04	59	0.79	14	109	1.78
APR
MAY
JUN
JUL
AUG
SEP
OCT
NOV
DEC
TOT	9,043	180	1.15	10	0.04	120	0.48	69	379	2.05
AVG	3,014	60	1.12	3	0.04	40	0.50	23	126	2.04

LONGLINE: PAPUA NEW GUINEA

The statistics in Table 10, which cover Papua New Guinea longliners in the WCPFC Statistical Area (Figure 1), were determined from catch and effort data held at SPC on 31 December 2006; statistics for 2004–2005, but not 2006, have been raised to represent the total catch and effort. Figure 26 presents catch rates for albacore, bigeye and yellowfin. Figure 27 presents estimates of annual catches; estimates for 1998–2005 include shark longliners.

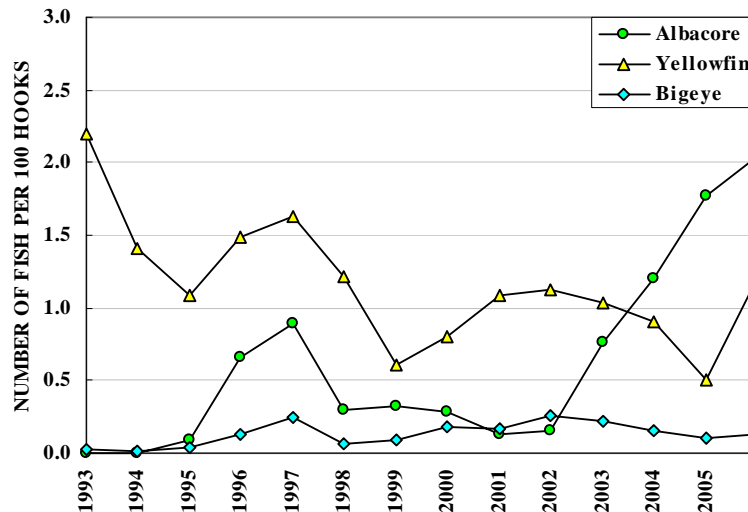


Figure 26. Papua New Guinea longliner catch rates

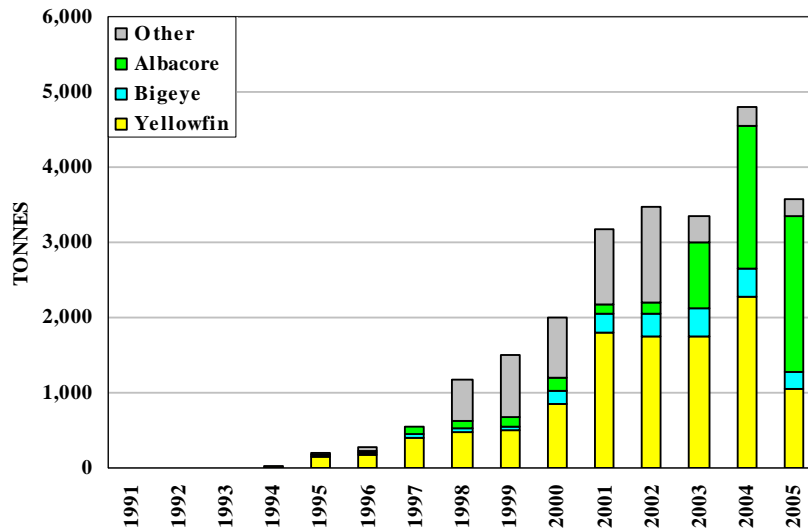


Figure 27. Catches by Papua New Guinea longliners

Table 10. Catch statistics for Papua New Guinea longliners. Units: Effort = hundreds of hooks; Catch = tonnes; CPUE = number of fish per 100 hooks.

MONTH	EFFORT	ALBACORE		BIGEYE		YELLOWFIN		OTHERS	TOTAL	
		CATCH	CPUE	CATCH	CPUE	CATCH	CPUE	CATCH	CATCH	CPUE
JAN/04	7,467	13	0.11	33	0.15	163	0.75	33	243	1.14
FEB	3,500	25	0.48	22	0.21	77	0.78	9	133	1.53
MAR	2,833	57	1.22	12	0.14	62	0.82	9	140	2.25
APR	3,846	104	1.55	18	0.16	107	1.09	14	243	2.90
MAY	7,862	101	0.74	50	0.21	222	1.12	21	394	2.16
JUN	8,382	232	1.60	38	0.16	254	1.23	21	544	3.10
JUL	10,399	245	1.37	52	0.19	220	0.87	18	535	2.50
AUG	10,259	302	1.71	44	0.16	233	0.88	17	596	2.83
SEP	9,133	286	1.87	25	0.11	152	0.60	22	485	2.67
OCT	10,160	204	1.15	28	0.10	252	0.87	31	514	2.23
NOV	9,562	177	1.10	27	0.09	334	1.17	29	566	2.50
DEC	9,562	147	0.98	40	0.14	207	0.73	24	418	1.92
TOT	92,966	1,891	1.20	390	0.15	2,281	0.91	248	4,810	2.35
AVG	7,747	158	1.16	32	0.15	190	0.91	21	401	2.31
JAN/05	7,636	132	1.10	27	0.12	149	0.73	28	336	2.06
FEB	5,615	94	1.02	26	0.15	105	0.67	24	249	1.99
MAR	7,384	103	0.87	33	0.15	100	0.49	21	256	1.60
APR	6,829	205	1.84	24	0.12	83	0.45	19	330	2.51
MAY	7,011	291	2.48	21	0.10	122	0.63	16	451	3.31
JUN	3,545	150	2.80	7	0.08	55	0.54	7	219	3.48
JUL	5,903	281	3.30	13	0.08	70	0.41	8	372	3.83
AUG	5,708	178	2.12	11	0.07	60	0.34	8	257	2.58
SEP	6,776	189	1.86	11	0.06	71	0.35	14	285	2.34
OCT	6,778	188	1.78	11	0.06	82	0.39	19	300	2.31
NOV	6,768	216	2.09	14	0.07	71	0.38	21	323	2.64
DEC	6,438	63	0.66	15	0.10	98	0.57	39	215	1.66
TOT	76,389	2,088	1.77	213	0.10	1,067	0.50	223	3,592	2.47
AVG	6,366	174	1.83	18	0.10	89	0.50	19	299	2.53
JAN/06	5,644	47	0.57	11	0.08	129	0.88	45	231	2.02
FEB	4,346	38	0.50	9	0.08	120	1.20	35	201	2.25
MAR	5,592	295	3.63	6	0.05	144	1.18	23	467	5.04
APR	6,059	214	2.46	9	0.09	174	1.45	23	421	4.20
MAY	4,092	134	2.25	8	0.11	138	1.66	16	296	4.22
JUN	4,230	134	2.23	24	0.37	102	1.09	10	269	3.82
JUL	3,348	122	2.52	11	0.21	76	1.03	12	220	3.97
AUG	426	17	2.78	1	0.08	4	0.37	4	25	3.79
SEP
OCT
NOV
DEC
TOT	33,737	999	2.04	79	0.13	885	1.20	167	2,130	3.65
AVG	4,217	125	2.12	10	0.14	111	1.11	21	266	3.66

LONGLINE: SAMOA

The statistics in Table 11, which cover Samoan longliners in the WCPFC Statistical Area (Figure 1), were determined from catch and effort data held at SPC on 31 December 2006; statistics for 2004–2005, but not 2006, have been raised to represent the total catch and effort. Figure 28 presents catch rates for albacore, bigeye and yellowfin. Figure 29 presents estimates of annual catches.

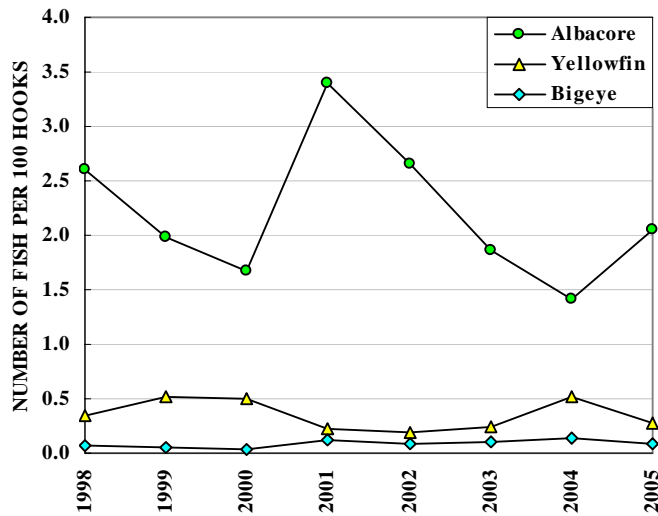


Figure 28. Samoan longliner catch rates

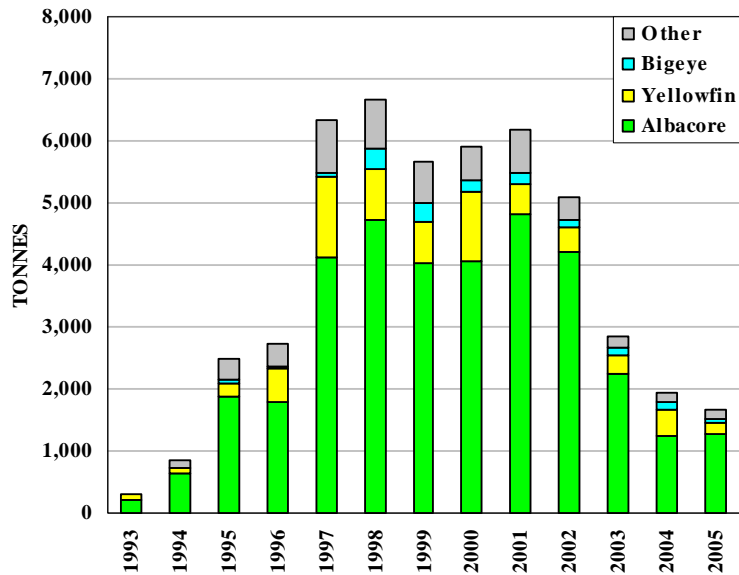


Figure 29. Catches by Samoan longliners

Table 11. Catch statistics for Samoan longliners. Units: Effort = hundreds of hooks; Catch = tonnes; CPUE = number of fish per 100 hooks.

MONTH	EFFORT	ALBACORE		BIGEYE		YELLOWFIN		OTHERS	TOTAL	
		CATCH	CPUE	CATCH	CPUE	CATCH	CPUE	CATCH	CATCH	CPUE
JAN/04	4,326	59	0.88	8	0.12	25	0.33	43	135	1.76
FEB	3,365	43	0.83	10	0.18	14	0.24	20	88	1.50
MAR	4,631	98	1.37	24	0.32	23	0.28	40	185	2.45
APR	4,449	79	1.15	8	0.11	40	0.50	19	145	1.97
MAY	3,523	76	1.40	11	0.20	57	0.91	28	171	2.89
JUN	4,401	162	2.40	13	0.19	45	0.57	28	248	3.54
JUL	4,379	147	2.19	10	0.14	97	1.26	49	304	4.32
AUG	3,706	90	1.58	6	0.10	83	1.27	46	226	3.74
SEP	4,347	83	1.25	10	0.14	47	0.61	76	216	2.57
OCT	5,189	105	1.32	9	0.10	20	0.22	52	186	2.00
NOV	5,940	118	1.29	7	0.07	15	0.14	54	194	1.92
DEC	5,702	108	1.24	10	0.11	19	0.19	75	212	2.10
TOT	53,959	1,168	1.41	125	0.14	486	0.51	531	2,310	2.52
AVG	4,497	97	1.41	10	0.15	40	0.54	44	193	2.56
JAN/05	3,815	72	1.24	9	0.12	8	0.10	46	135	1.98
FEB	1,869	41	1.43	4	0.10	7	0.16	18	69	2.10
MAR	4,257	65	0.99	3	0.04	10	0.11	43	121	1.50
APR	3,190	59	1.21	4	0.06	9	0.13	25	97	1.70
MAY	1,356	38	1.85	3	0.11	9	0.29	6	56	2.52
JUN	4,136	236	3.72	8	0.10	81	0.89	42	367	5.19
JUL	1,156	31	1.77	1	0.03	5	0.21	21	59	2.52
AUG	2,784	85	2.00	2	0.03	22	0.37	10	119	2.56
SEP	4,460	121	1.78	9	0.11	23	0.28	75	228	2.86
OCT	5,194	220	2.77	11	0.11	22	0.22	41	295	3.42
NOV	5,662	228	2.63	13	0.12	23	0.21	59	322	3.43
DEC	1,290	29	1.47	4	0.17	11	0.44	10	54	2.38
TOT	39,169	1,226	2.05	70	0.09	230	0.28	396	1,922	2.84
AVG	3,264	102	1.91	6	0.09	19	0.29	33	160	2.68
JAN/06	665	17	1.63	2	0.14	7	0.58	5	31	2.66
FEB	715	15	1.38	1	0.09	9	0.67	5	30	2.44
MAR
APR
MAY
JUN
JUL
AUG
SEP
OCT
NOV
DEC
TOT	1,380	32	1.50	3	0.11	15	0.63	10	61	2.55
AVG	690	16	1.50	2	0.12	8	0.63	5	31	2.55

LONGLINE: CHINESE TAIPEI DISTANT-WATER FLEET

The statistics in Table 12, which cover distant-water Chinese Taipei longliners in the WCPFC Statistical Area (Figure 1), were determined from catch and effort data held at SPC on 31 December 2006; statistics for 2001–2003 have been raised to represent the total catch and effort. Figure 30 presents catch rates for albacore, bigeye and yellowfin. Figure 31 presents estimates of annual catches.

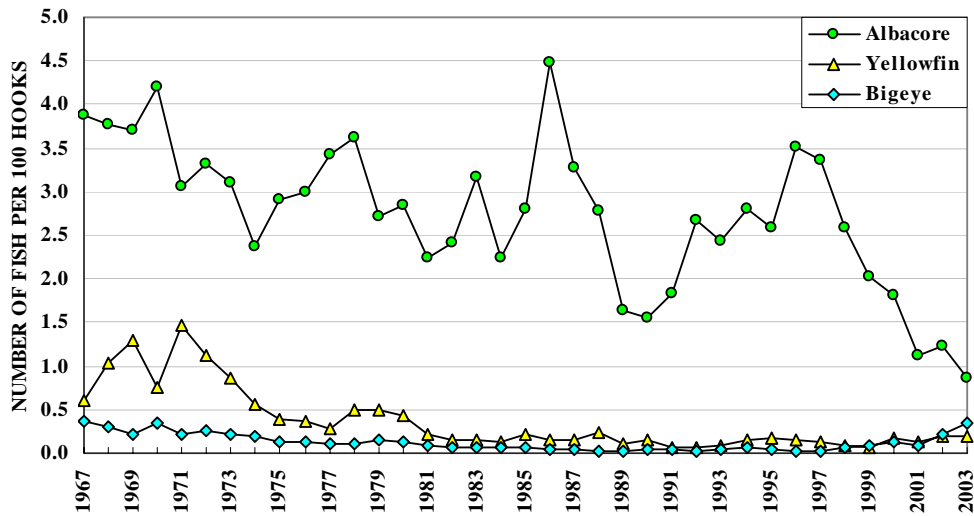


Figure 30. Chinese Taipei distant-water longliner catch rates

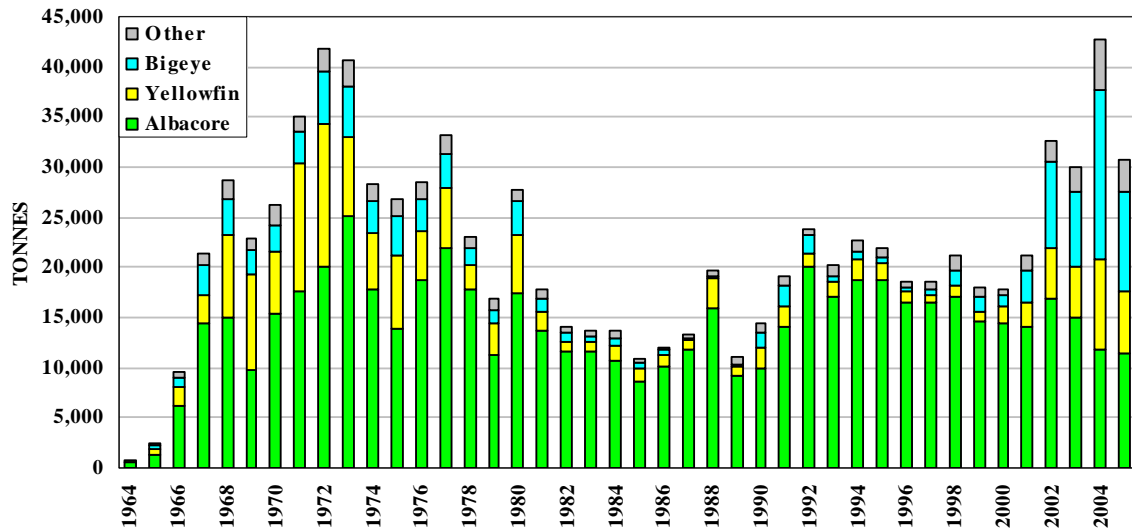


Figure 31. Catches by Chinese Taipei distant-water longliners

Table 12. Catch statistics for Chinese Taipei distant-water longliners. Units: Effort = hundreds of hooks; Catch = tonnes; CPUE = number of fish per 100 hooks.

MONTH	EFFORT	ALBACORE		BIGEYE		YELLOWFIN		OTHERS	TOTAL	
		CATCH	CPUE	CATCH	CPUE	CATCH	CPUE	CATCH	CATCH	CPUE
JAN/01	86,343	1,418	0.94	608	0.16	338	0.12	373	2,737	1.48
FEB	77,233	1,290	0.99	287	0.09	274	0.11	428	2,279	1.44
MAR	75,562	1,026	0.77	152	0.06	469	0.19	561	2,208	1.34
APR	54,283	1,039	1.26	248	0.11	248	0.13	612	2,148	1.94
MAY	67,505	1,239	1.08	351	0.11	305	0.14	687	2,583	1.58
JUN	73,336	1,535	1.25	299	0.10	245	0.11	813	2,893	1.85
JUL	63,835	2,035	1.93	123	0.05	212	0.11	831	3,202	2.56
AUG	61,886	1,967	2.04	130	0.05	252	0.13	635	2,984	2.64
SEP	52,128	514	0.74	264	0.12	352	0.20	741	1,872	1.62
OCT	40,290	528	0.93	52	0.03	247	0.19	662	1,488	1.83
NOV	38,429	410	0.52	122	0.06	175	0.14	451	1,158	1.16
DEC	34,183	494	0.76	101	0.05	94	0.08	290	979	1.25
TOT	725,012	13,494	1.13	2,738	0.09	3,212	0.13	7,085	26,529	1.74
AVG	60,418	1,125	1.10	228	0.08	268	0.14	590	2,211	1.72
JAN/02	54,073	631	0.85	148	0.07	190	0.12	272	1,241	1.19
FEB	56,059	726	0.86	86	0.05	311	0.16	248	1,372	1.25
MAR	39,840	290	0.46	253	0.15	303	0.21	247	1,092	1.06
APR	49,950	606	0.88	553	0.26	332	0.19	364	1,856	1.54
MAY	77,284	1,558	1.36	384	0.12	332	0.12	469	2,744	1.79
JUN	120,257	3,151	1.84	518	0.11	507	0.14	605	4,780	2.27
JUL	117,108	2,501	1.64	1,191	0.25	696	0.22	760	5,148	2.31
AUG	89,850	1,823	1.45	914	0.26	525	0.21	642	3,905	2.16
SEP	45,049	462	0.75	690	0.39	332	0.30	574	2,058	1.85
OCT	45,998	666	0.86	652	0.36	368	0.31	565	2,250	1.91
NOV	31,271	316	0.65	534	0.43	370	0.40	369	1,589	1.85
DEC	10,485	118	0.63	164	0.46	42	0.12	108	433	1.44
TOT	737,223	12,850	1.23	6,088	0.21	4,307	0.20	5,223	28,467	1.86
AVG	61,435	1,071	1.02	507	0.24	359	0.21	435	2,372	1.72
JAN/03	73,622	699	0.70	1,520	0.55	956	0.37	836	4,012	1.85
FEB	76,253	557	0.46	1,265	0.45	763	0.30	723	3,309	1.41
MAR	68,779	527	0.62	1,281	0.47	444	0.19	567	2,820	1.45
APR	61,373	435	0.48	850	0.35	370	0.16	434	2,089	1.15
MAY	98,382	1,377	0.92	898	0.25	676	0.22	619	3,571	1.54
JUN	104,878	1,657	1.06	902	0.24	637	0.21	579	3,775	1.63
JUL	114,596	1,803	1.06	1,136	0.29	550	0.16	603	4,091	1.63
AUG	97,458	1,444	1.12	1,018	0.27	500	0.17	609	3,571	1.70
SEP	67,478	739	0.75	886	0.33	354	0.18	517	2,496	1.39
OCT	48,396	751	1.01	612	0.33	245	0.16	296	1,904	1.61
NOV	38,548	526	1.11	561	0.33	135	0.11	244	1,465	1.68
DEC	39,404	474	0.93	692	0.41	139	0.12	297	1,601	1.59
TOT	889,165	10,989	0.87	11,619	0.34	5,769	0.20	6,326	34,703	1.56
AVG	74,097	916	0.85	968	0.35	481	0.20	527	2,892	1.55

POLE-AND-LINE: JAPAN

The statistics in Table 13, which cover Japanese offshore and distant-water pole-and-line vessels in the WCPFC Statistical Area (Figure 1), were determined from catch and effort data held at SPC on 31 December 2006; statistics for 2002–2004 have been raised to represent the total catch and effort. Figure 32 presents catch rates for skipjack, albacore and yellowfin. Figure 33 presents estimates of annual catches.

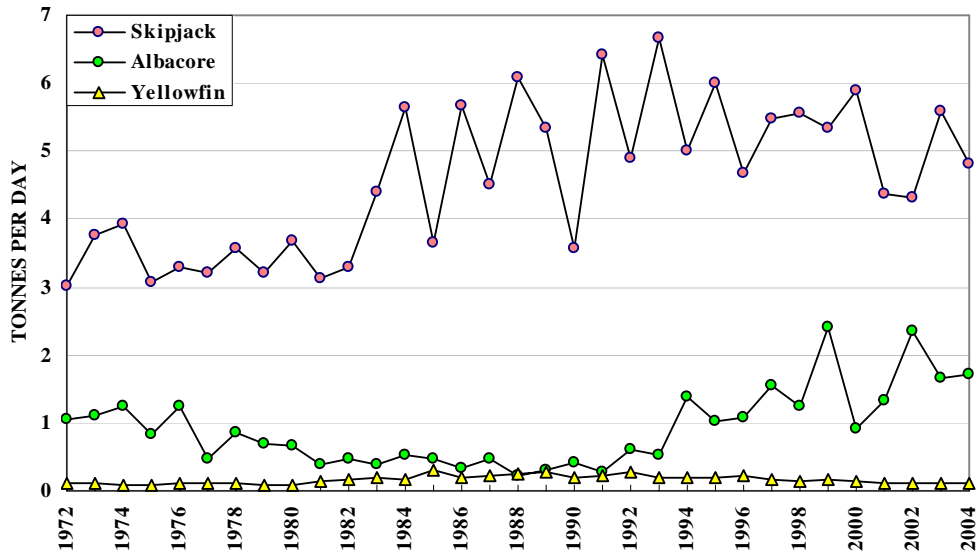


Figure 32. Japanese pole-and-line catch rates

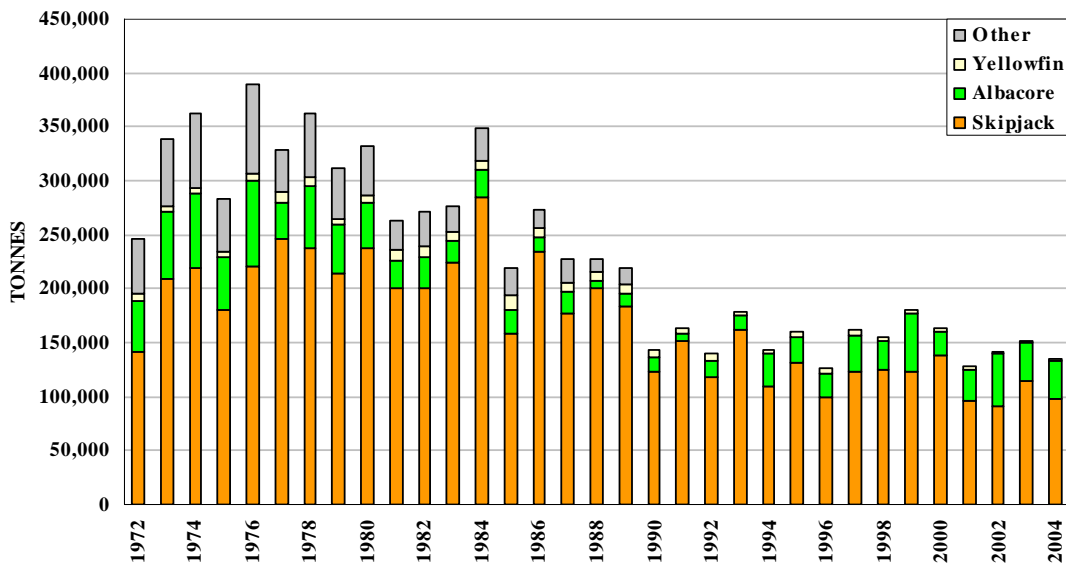


Figure 33. Catches by Japanese offshore and distant-water pole-and-line vessels

Table 13. Catch statistics for Japanese pole-and-line vessels. Units: Effort = days fished or searched; Catch = tonnes; CPUE = tonnes per day fished or searched.

MONTH	EFFORT	SKIPJACK		ALBACORE		YELLOWFIN		OTHERS	TOTAL	
		CATCH	CPUE	CATCH	CPUE	CATCH	CPUE	CATCH	CATCH	CPUE
JAN/02	474	2,973	6.27	0	0.00	104	0.22	20	3,097	6.53
FEB	1,332	7,194	5.40	0	0.00	316	0.24	24	7,536	5.66
MAR	1,971	8,851	4.49	19	0.01	283	0.14	106	9,259	4.70
APR	2,284	12,632	5.53	627	0.27	377	0.17	237	13,873	6.07
MAY	2,390	8,392	3.51	3,180	1.33	410	0.17	377	12,359	5.17
JUN	2,291	5,277	2.30	12,613	5.51	283	0.12	719	18,892	8.25
JUL	2,227	8,325	3.74	12,597	5.66	208	0.09	427	21,557	9.68
AUG	1,978	4,860	2.46	11,732	5.93	103	0.05	95	16,790	8.49
SEP	2,001	10,874	5.43	7,589	3.79	75	0.04	67	18,605	9.30
OCT	2,073	7,530	3.63	332	0.16	155	0.07	57	8,074	3.89
NOV	1,399	8,221	5.88	763	0.55	135	0.10	82	9,201	6.58
DEC	535	5,489	10.26	5	0.01	52	0.10	17	5,563	10.40
TOT	20,955	90,618	4.32	49,457	2.36	2,500	0.12	2,228	144,803	6.91
AVG	1,746	7,551	4.91	4,121	1.94	208	0.13	186	12,067	7.06
JAN/03	429	3,920	9.14	6	0.01	74	0.17	19	4,019	9.37
FEB	1,316	10,082	7.66	2	0.00	281	0.21	39	10,404	7.91
MAR	1,676	14,521	8.66	7	0.00	191	0.11	49	14,767	8.81
APR	2,076	13,283	6.40	394	0.19	271	0.13	215	14,164	6.82
MAY	2,367	15,458	6.53	67	0.03	355	0.15	223	16,103	6.80
JUN	2,016	12,778	6.34	7,848	3.89	288	0.14	235	21,149	10.49
JUL	2,149	10,785	5.02	7,331	3.41	164	0.08	183	18,463	8.59
AUG	2,033	10,497	5.16	6,269	3.08	59	0.03	82	16,907	8.32
SEP	2,022	11,640	5.76	1,387	0.69	87	0.04	42	13,156	6.51
OCT	2,014	6,279	3.12	7,676	3.81	122	0.06	15	14,092	7.00
NOV	1,662	2,945	1.77	3,590	2.16	93	0.06	37	6,665	4.01
DEC	904	3,068	3.39	4	0.00	104	0.12	35	3,211	3.55
TOT	20,664	115,257	5.58	34,580	1.67	2,089	0.10	1,173	153,099	7.41
AVG	1,722	9,605	5.75	2,882	1.44	174	0.11	98	12,758	7.35
JAN/04	603	4,915	8.15	104	0.17	109	0.18	19	5,148	8.54
FEB	910	3,696	4.06	1	0.00	220	0.24	49	3,966	4.36
MAR	1,912	5,929	3.10	2,348	1.23	427	0.22	206	8,909	4.66
APR	2,120	7,517	3.55	8,883	4.19	355	0.17	875	17,630	8.32
MAY	2,421	4,369	1.80	12,940	5.34	217	0.09	424	17,949	7.41
JUN	2,060	6,854	3.33	8,211	3.99	208	0.10	1,258	16,531	8.02
JUL	2,087	9,627	4.61	2,266	1.09	164	0.08	886	12,942	6.20
AUG	1,871	18,115	9.68	40	0.02	77	0.04	242	18,473	9.87
SEP	2,131	16,239	7.62	18	0.01	90	0.04	139	16,485	7.74
OCT	1,955	8,737	4.47	12	0.01	144	0.07	63	8,956	4.58
NOV	1,649	6,976	4.23	11	0.01	167	0.10	68	7,221	4.38
DEC	612	4,867	7.95	14	0.02	91	0.15	17	4,989	8.15
TOT	20,331	97,841	4.81	34,847	1.71	2,267	0.11	4,245	139,199	6.85
AVG	1,694	8,153	5.21	2,904	1.34	189	0.12	354	11,600	6.85

POLE AND LINE: SOLOMON ISLANDS

The statistics in Table 14, which cover the Solomon Islands pole-and-line fleet in the WCPFC Statistical Area (Figure 1), were determined from catch and effort data held at SPC on 31 December 2006; statistics for 2003–2004, but not 2005, have been raised to represent the total catch and effort. Figure 34 presents catch rates for skipjack and yellowfin. Figure 35 presents estimates of annual catches.

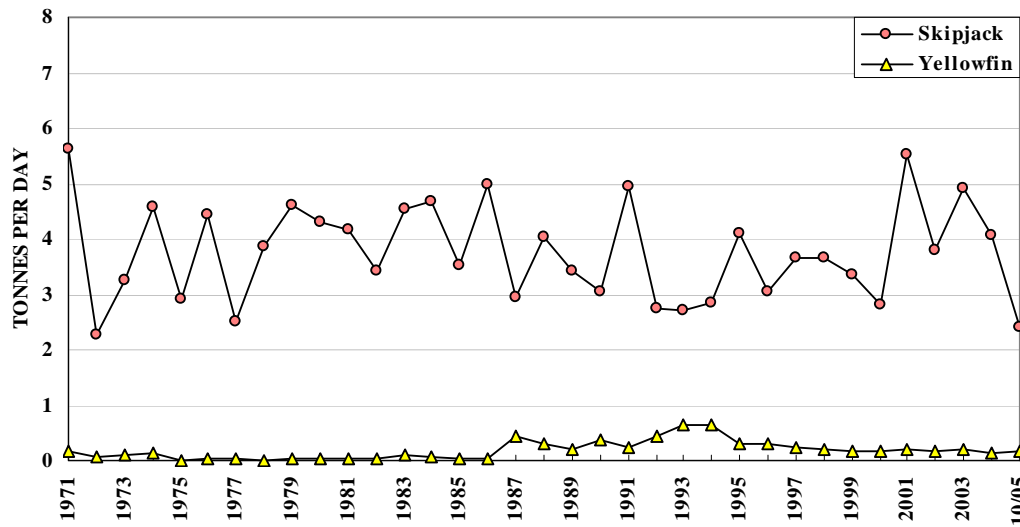


Figure 34. Solomon Islands pole-and-line catch rates

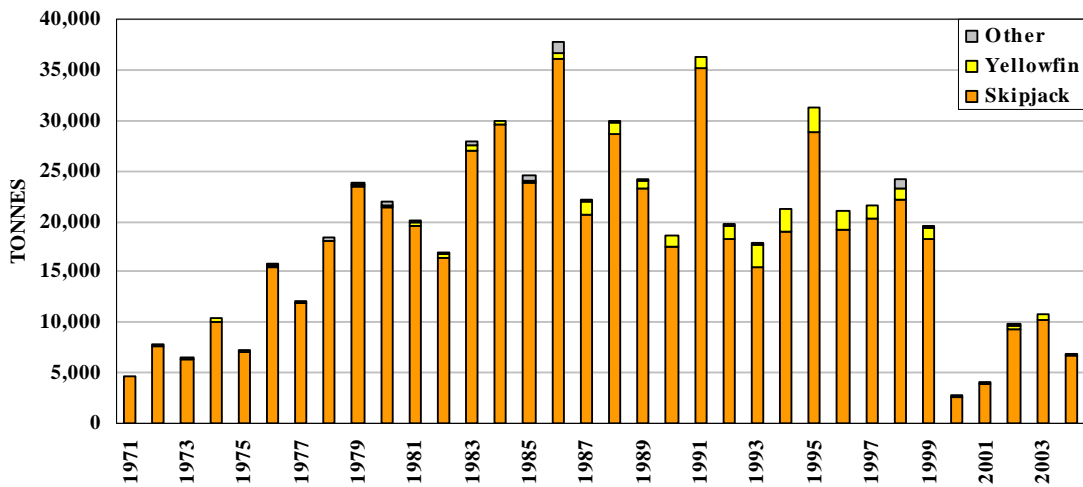


Figure 35. Catches by Solomon Islands pole-and-line vessels

Table 14. Catch statistics for Solomon Islands pole-and-line vessels. Units: Effort = days fished or searched; Catch = tonnes; CPUE = tonnes per day fished or searched.

MONTH	EFFORT	SKIPJACK			YELLOWFIN			OTHERS	TOTAL	
		CATCH	CPUE	%	CATCH	CPUE	%	CATCH	CATCH	CPUE
JAN/03	188	1,521	8.09	95	77	0.41	5	0	1,598	8.50
FEB	184	1,389	7.55	96	61	0.33	4	0	1,450	7.88
MAR	167	927	5.55	94	58	0.35	6	0	985	5.90
APR	176	889	5.05	97	24	0.13	3	3	915	5.20
MAY	209	1,219	5.83	97	30	0.14	2	5	1,254	6.00
JUN	164	1,085	6.61	97	30	0.18	3	2	1,117	6.81
JUL	168	804	4.78	96	33	0.20	4	3	839	5.00
AUG	182	623	3.42	95	31	0.17	5	1	656	3.60
SEP	191	675	3.53	94	46	0.24	6	0	721	3.77
OCT	189	452	2.39	94	29	0.15	6	0	481	2.55
NOV	189	644	3.41	98	13	0.07	2	0	657	3.48
DEC	96	122	1.27	91	12	0.13	9	0	135	1.40
TOT	2,103	10,350	4.92	96	444	0.21	4	14	10,809	5.14
AVG	175	863	4.79	96	37	0.21	4	1	901	5.01
JAN/04	87	441	5.07	88	18	0.21	4	41	500	5.75
FEB	91	166	1.83	68	16	0.17	6	62	244	2.68
MAR	78	223	2.86	78	9	0.11	3	55	287	3.68
APR	163	233	1.43	61	51	0.31	13	100	384	2.36
MAY	0	—	—	—	—	—	—	—	—	—
JUN	116	510	4.39	91	22	0.19	4	27	559	4.82
JUL	168	858	5.11	98	11	0.07	1	10	879	5.23
AUG	233	1,000	4.29	98	8	0.03	1	11	1,019	4.38
SEP	253	1,325	5.24	98	28	0.11	2	2	1,355	5.36
OCT	217	965	4.45	96	44	0.20	4	0	1,009	4.65
NOV	166	675	4.06	96	31	0.19	4	0	706	4.25
DEC	64	238	3.72	96	8	0.13	3	1	248	3.87
TOT	1,636	6,635	4.06	92	246	0.15	3	309	7,190	4.40
AVG	149	603	3.86	92	22	0.16	3	28	654	4.28
JAN/05	123	360	2.92	98	7	0.06	2	0	367	2.98
FEB	147	425	2.89	92	39	0.26	8	0	464	3.16
MAR	209	456	2.18	86	72	0.34	14	0	528	2.53
APR	281	419	1.49	89	53	0.19	11	0	471	1.68
MAY	323	838	2.60	93	64	0.20	7	0	903	2.80
JUN	391	817	2.09	91	79	0.20	9	0	896	2.29
JUL	340	756	2.22	91	73	0.22	9	0	829	2.44
AUG	407	1,058	2.60	98	23	0.06	2	0	1,081	2.66
SEP	250	621	2.48	97	21	0.08	3	0	641	2.57
OCT	224	686	3.06	97	18	0.08	3	0	703	3.14
NOV
DEC
TOT	2,695	6,435	2.39	93	448	0.17	7	0	6,884	2.55
AVG	270	644	2.45	93	45	0.17	7	0	688	2.63

PURSE SEINE: FEDERATED STATES OF MICRONESIA

The statistics in Table 15, which cover the Federated States of Micronesia purse seiners in the WCPFC Statistical Area (Figure 1), were determined from catch and effort data held at SPC on 31 December 2006; statistics for 2004–2005, but not 2006, have been raised to represent the total catch and effort. Figure 36 presents catch rates for skipjack, yellowfin and bigeye. Figure 37 presents estimates of annual catches.

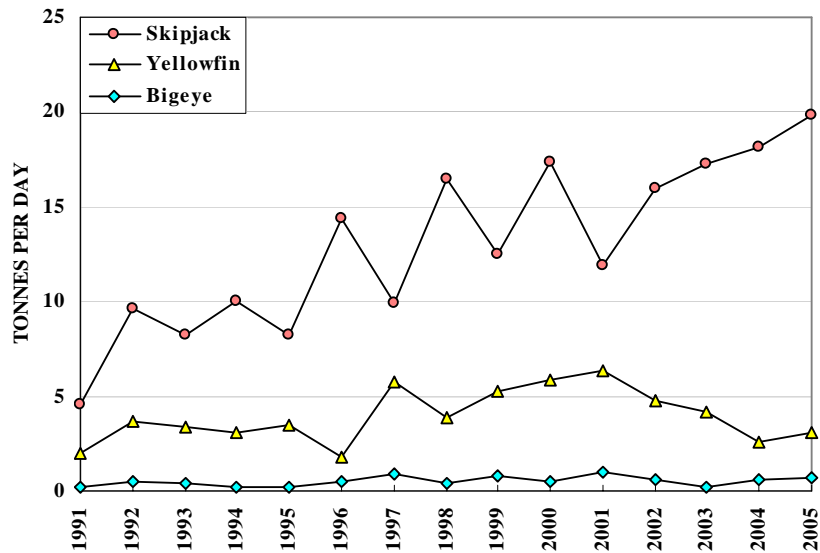


Figure 36. Federated States of Micronesia purse seiner catch rates

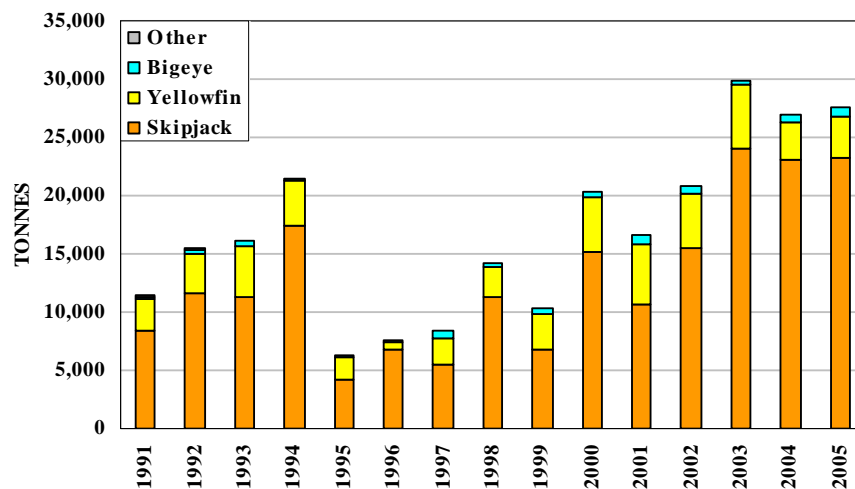


Figure 37. Catches by Federated States of Micronesia purse seiners

Table 15. Catch statistics for Federated States of Micronesia purse seiners. Units: Effort = days fished or searched; Catch = tonnes; CPUE = tonnes per day fished or searched.

MONTH	EFFORT	SKIPJACK			YELLOWFIN			BIGEYE			TOTAL	
		CATCH	CPUE	%	CATCH	CPUE	%	CATCH	CPUE	%	CATCH	CPUE
JAN/04	102	1,234	12.09	83	207	2.03	14	41	0.40	3	1,482	14.52
FEB	113	1,936	17.13	76	504	4.46	20	92	0.81	4	2,532	22.41
MAR	96	2,103	21.90	84	328	3.41	13	73	0.76	3	2,504	26.08
APR	120	1,698	14.15	86	214	1.79	11	73	0.61	4	1,985	16.54
MAY	148	2,988	20.19	93	174	1.18	5	56	0.38	2	3,219	21.75
JUN	85	625	7.35	84	95	1.11	13	29	0.34	4	748	8.80
JUL	98	1,272	12.98	68	499	5.10	27	89	0.91	5	1,860	18.98
AUG	97	1,871	19.28	88	209	2.15	10	36	0.37	2	2,116	21.81
SEP	125	3,452	27.61	89	331	2.65	9	94	0.75	2	3,876	31.01
OCT	84	2,622	31.22	93	157	1.87	6	41	0.49	1	2,821	33.58
NOV	87	1,685	19.36	89	161	1.85	9	46	0.52	2	1,891	21.73
DEC	110	1,515	13.77	79	353	3.21	18	58	0.53	3	1,926	17.51
TOT	1,265	22,998	18.18	85	3,233	2.56	12	726	0.57	3	26,958	21.31
AVG	105	1,917	18.09	85	269	2.57	12	61	0.57	3	2,247	21.23
JAN/05	118	2,280	19.32	88	252	2.14	10	55	0.47	2	2,587	21.93
FEB	94	1,938	20.62	93	113	1.20	5	27	0.29	1	2,078	22.10
MAR	124	3,224	26.00	85	455	3.67	12	113	0.91	3	3,792	30.58
APR	137	2,743	20.02	79	566	4.13	16	154	1.12	4	3,463	25.28
MAY	110	2,053	18.66	85	279	2.53	12	84	0.77	3	2,416	21.96
JUN	94	2,043	21.73	91	182	1.94	8	17	0.18	1	2,242	23.85
JUL	101	2,266	22.43	91	182	1.80	7	36	0.36	1	2,484	24.59
AUG	112	1,025	9.15	58	610	5.44	34	133	1.19	8	1,768	15.79
SEP	93	1,069	11.50	71	336	3.61	22	94	1.02	6	1,500	16.13
OCT	64	2,215	34.61	97	62	0.97	3	13	0.20	1	2,290	35.78
NOV	57	1,206	21.17	74	386	6.77	24	32	0.56	2	1,624	28.50
DEC	62	1,098	17.71	87	128	2.07	10	34	0.54	3	1,260	20.32
TOT	1,166	23,161	19.86	84	3,551	3.05	13	793	0.68	3	27,504	23.59
AVG	97	1,930	20.24	84	296	3.02	13	66	0.63	3	2,292	23.90
JAN/06	71	462	6.50	69	187	2.64	28	17	0.24	3	666	9.38
FEB	40	395	9.88	95	16	0.40	4	4	0.10	1	415	10.38
MAR	55	1,480	26.91	91	140	2.55	9	15	0.27	1	1,635	29.73
APR	25	410	16.40	87	50	2.00	11	10	0.40	2	470	18.80
MAY	42	390	9.29	98	8	0.18	2	2	0.06	1	400	9.52
JUN	10	155	15.50	94	7	0.72	4	3	0.28	2	165	16.50
JUL	18	865	48.06	96	35	1.94	4	5	0.28	1	905	50.28
AUG	16	635	39.69	96	24	1.48	4	1	0.08	0	660	41.25
SEP
OCT
NOV
DEC
TOT	277	4,792	17.30	90	467	1.69	9	57	0.21	1	5,316	19.19
AVG	35	599	21.53	90	58	1.49	9	7	0.21	1	664	23.23

PURSE SEINE: JAPAN

The statistics in Table 16, which cover the Japanese purse seiners in the WCPFC Statistical Area (Figure 1), were determined from catch and effort data held at SPC on 31 December 2006; statistics for 2004–2005, but not 2006, have been raised to represent the total catch and effort. Figure 38 presents catch rates for skipjack, yellowfin and bigeye. Figure 39 presents estimates of annual catches.

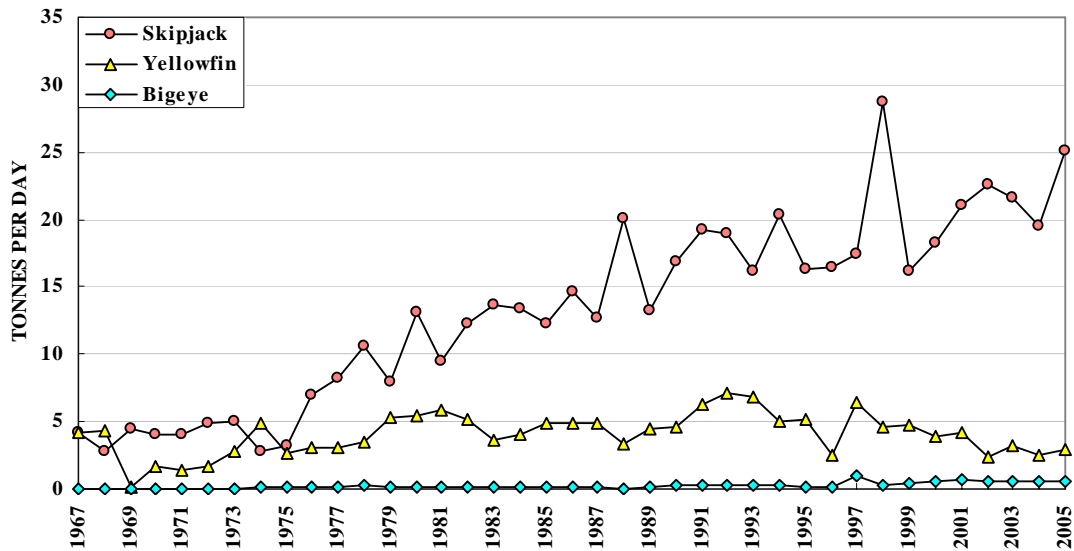


Figure 38. Japanese purse seiner catch rates

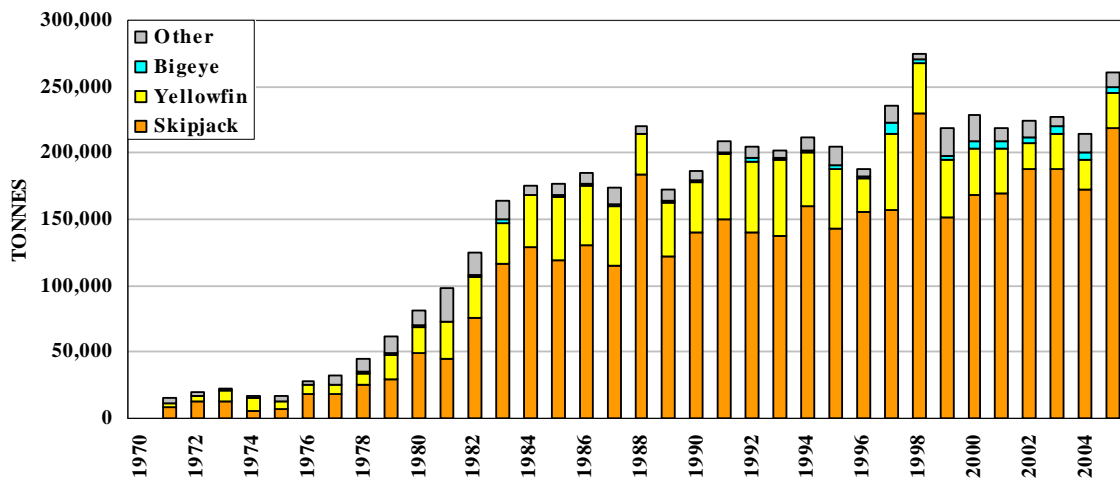


Figure 39. Catches by Japanese purse seiners

Table 16. Catch statistics for Japanese purse seiners. Units: Effort = days fished or searched; Catch = tonnes; CPUE = tonnes per day fished or searched.

MONTH	EFFORT	SKIPJACK			YELLOWFIN			BIGEYE			TOTAL	
		CATCH	CPUE	%	CATCH	CPUE	%	CATCH	CPUE	%	CATCH	CPUE
JAN/04	603	13,626	22.60	86	1,788	2.97	11	319	0.53	2	15,766	26.15
FEB	507	13,264	26.16	89	1,492	2.94	10	225	0.44	2	14,982	29.55
MAR	486	15,041	30.95	90	1,398	2.88	8	248	0.51	1	16,691	34.34
APR	800	17,962	22.45	78	4,277	5.35	18	581	0.73	3	23,150	28.94
MAY	949	16,996	17.91	72	1,840	1.94	8	423	0.45	2	23,601	24.87
JUN	1,029	12,954	12.59	64	1,474	1.43	7	661	0.64	3	20,098	19.53
JUL	1,021	19,640	19.24	81	1,412	1.38	6	464	0.45	2	24,125	23.63
AUG	913	15,404	16.87	81	1,993	2.18	10	239	0.26	1	19,104	20.92
SEP	651	10,283	15.80	78	2,237	3.44	17	293	0.45	2	13,111	20.14
OCT	666	15,234	22.87	86	1,929	2.90	11	460	0.69	3	17,705	26.59
NOV	606	11,279	18.61	81	1,446	2.39	10	376	0.62	3	13,980	23.07
DEC	591	10,936	18.50	78	1,342	2.27	10	289	0.49	2	14,058	23.79
TOT	8,822	172,619	19.57	80	22,628	2.57	10	4,577	0.52	2	216,371	24.53
AVG	735	14,385	20.38	80	1,886	2.67	10	381	0.52	2	18,031	25.13
JAN/05	637	13,371	20.99	86	1,534	2.41	10	483	0.76	3	15,474	24.29
FEB	504	12,948	25.69	88	1,255	2.49	9	220	0.44	1	14,753	29.27
MAR	611	15,415	25.23	81	3,176	5.20	17	499	0.82	3	19,100	31.26
APR	659	14,948	22.68	88	1,250	1.90	7	328	0.50	2	16,910	25.66
MAY	791	16,257	20.55	86	1,815	2.29	10	311	0.39	2	18,956	23.97
JUN	927	18,128	19.56	78	1,312	1.42	6	214	0.23	1	23,291	25.13
JUL	961	22,852	23.78	76	3,974	4.14	13	188	0.20	1	30,145	31.37
AUG	866	26,248	30.31	85	3,088	3.57	10	255	0.29	1	31,012	35.81
SEP	754	22,041	29.23	87	2,533	3.36	10	339	0.45	1	25,254	33.50
OCT	543	16,095	29.64	86	1,285	2.37	7	688	1.27	4	18,758	34.55
NOV	430	12,177	28.32	83	1,371	3.19	9	373	0.87	3	14,602	33.96
DEC	135	5,387	39.90	85	710	5.26	11	158	1.17	2	6,373	47.21
TOT	7,818	195,868	25.05	83	23,304	2.98	10	4,055	0.52	2	234,629	30.01
AVG	651	16,322	26.32	83	1,942	3.13	10	338	0.62	2	19,552	31.33
JAN/06	216	6,959	32.22	93	490	2.27	7	68	0.31	1	7,517	34.80
FEB	128	2,934	22.92	84	519	4.05	15	27	0.21	1	3,483	27.21
MAR	225	8,716	38.74	91	710	3.16	7	131	0.58	1	9,560	42.49
APR	377	16,793	44.54	91	1,504	3.99	8	241	0.64	1	18,550	49.21
MAY	249	8,206	32.96	91	702	2.82	8	82	0.33	1	8,991	36.11
JUN	171	5,621	32.87	90	551	3.22	9	79	0.46	1	6,251	36.55
JUL	156	2,397	15.37	82	457	2.93	16	9	0.06	0	2,930	18.78
AUG
SEP
OCT
NOV
DEC
TOT	1,522	51,626	33.92	90	4,933	3.24	9	637	0.42	1	57,282	37.64
AVG	217	7,375	31.37	90	705	3.21	9	91	0.37	1	8,183	35.02

PURSE SEINE: REPUBLIC OF KOREA

The statistics in Table 17, which cover the Korean purse seiners in the WCPFC Statistical Area (Figure 1), were determined from catch and effort data held at SPC on 31 December 2006; statistics for 2004–2005, but not 2006, have been raised to represent the total catch and effort. Figure 40 presents catch rates for skipjack, yellowfin and bigeye. Figure 41 presents estimates of annual catches.

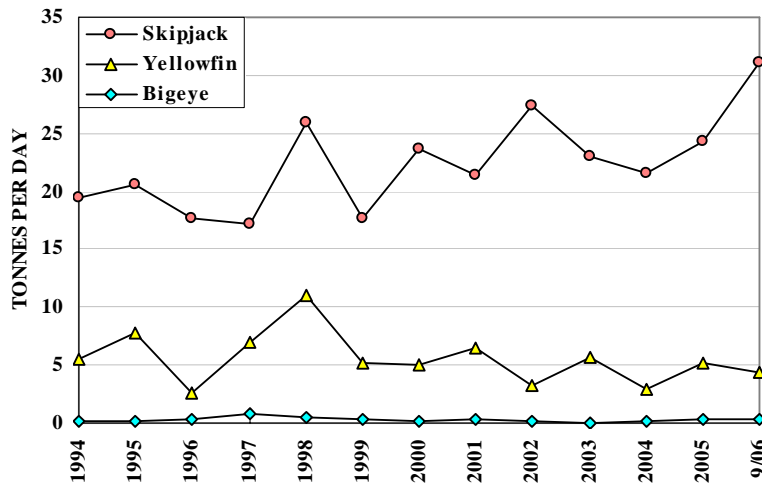


Figure 40. Korean purse seiner catch rates

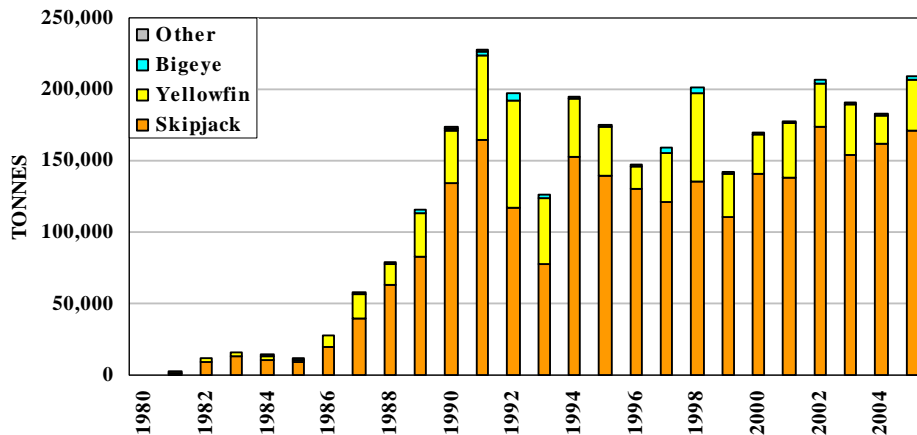


Figure 41. Catches by Korean purse seiners

Table 17. Catch statistics for Korean purse seiners. Units: Effort = days fished or searched; Catch = tonnes; CPUE = tonnes per day fished or searched.

MONTH	EFFORT	SKIPJACK			YELLOWFIN			BIGEYE			TOTAL	
		CATCH	CPUE	%	CATCH	CPUE	%	CATCH	CPUE	%	CATCH	CPUE
JAN/04	623	12,660	20.32	78	3,469	5.57	21	150	0.24	1	16,279	26.13
FEB	597	16,152	27.06	90	1,663	2.79	9	148	0.25	1	17,964	30.10
MAR	598	16,010	26.77	95	767	1.28	5	111	0.19	1	16,889	28.24
APR	620	13,036	21.04	94	693	1.12	5	120	0.19	1	13,849	22.35
MAY	603	12,485	20.69	96	496	0.82	4	83	0.14	1	13,064	21.65
JUN	522	5,997	11.50	98	98	0.19	2	27	0.05	0	6,123	11.74
JUL	673	11,274	16.75	74	3,812	5.66	25	139	0.21	1	15,225	22.61
AUG	715	11,345	15.87	79	2,912	4.07	20	171	0.24	1	14,430	20.19
SEP	633	14,796	23.38	86	2,274	3.59	13	229	0.36	1	17,301	27.34
OCT	669	19,062	28.50	91	1,807	2.70	9	140	0.21	1	21,009	31.41
NOV	541	12,657	23.39	91	1,156	2.14	8	91	0.17	1	13,904	25.69
DEC	630	14,853	23.59	86	2,290	3.64	13	111	0.18	1	17,255	27.40
TOT	7,423	160,327	21.60	87	21,437	2.89	12	1,521	0.20	1	183,289	24.69
AVG	619	13,361	21.57	87	1,786	2.80	12	127	0.20	1	15,274	24.57
JAN/05	580	11,396	19.66	73	3,991	6.88	26	227	0.39	1	15,615	26.93
FEB	459	9,298	20.24	81	2,023	4.40	18	144	0.31	1	11,466	24.96
MAR	553	13,599	24.59	87	1,932	3.49	12	168	0.30	1	15,701	28.39
APR	559	11,726	20.96	80	2,736	4.89	19	263	0.47	2	14,726	26.32
MAY	572	19,938	34.84	97	525	0.92	3	50	0.09	0	20,513	35.84
JUN	590	20,721	35.10	95	917	1.55	4	63	0.11	0	21,823	36.97
JUL	695	17,286	24.88	86	2,711	3.90	13	202	0.29	1	20,199	29.08
AUG	592	12,230	20.67	70	4,954	8.37	28	299	0.51	2	17,483	29.56
SEP	643	8,056	12.54	62	4,684	7.29	36	347	0.54	3	13,087	20.36
OCT	594	10,645	17.93	77	2,912	4.90	21	235	0.40	2	13,792	23.23
NOV	606	18,867	31.16	76	5,637	9.31	23	355	0.59	1	24,860	41.06
DEC	593	16,956	28.62	82	3,426	5.78	17	270	0.46	1	20,651	34.85
TOT	7,035	170,717	24.27	81	36,449	5.18	17	2,624	0.37	1	209,915	29.84
AVG	586	14,226	24.27	81	3,037	5.14	17	219	0.37	1	17,493	29.80
JAN/06	613	9,983	16.29	78	2,636	4.30	21	166	0.27	1	12,785	20.86
FEB	486	13,737	28.27	92	1,061	2.18	7	112	0.23	1	14,911	30.68
MAR	544	22,640	41.62	87	3,190	5.86	12	215	0.40	1	26,046	47.88
APR	488	20,690	42.40	91	1,768	3.62	8	207	0.42	1	22,665	46.45
MAY	497	13,980	28.13	92	961	1.93	6	194	0.39	1	15,138	30.46
JUN	573	19,156	33.43	92	1,567	2.73	7	182	0.32	1	20,910	36.49
JUL	590	18,445	31.26	75	5,794	9.82	24	331	0.56	1	24,570	41.64
AUG	449	13,843	30.83	89	1,667	3.71	11	115	0.26	1	15,625	34.80
SEP	44	1,115	25.34	87	146	3.32	11	14	0.32	1	1,275	28.98
OCT
NOV
DEC
TOT	4,284	133,589	31.18	87	18,789	4.39	12	1,537	0.36	1	153,925	35.93
AVG	476	14,843	30.84	87	2,088	4.16	12	171	0.35	1	17,103	35.36

PURSE SEINE: PAPUA NEW GUINEA

The statistics in Table 18, which cover the Papua New Guinea purse seiners in the WCPFC Statistical Area (Figure 1), were determined from catch and effort data held at SPC on 31 December 2006; statistics for 2004–2005, but not 2006, have been raised to represent the total catch and effort. Figure 42 presents catch rates for skipjack, yellowfin and bigeye. Figure 43 presents estimates of annual catches.

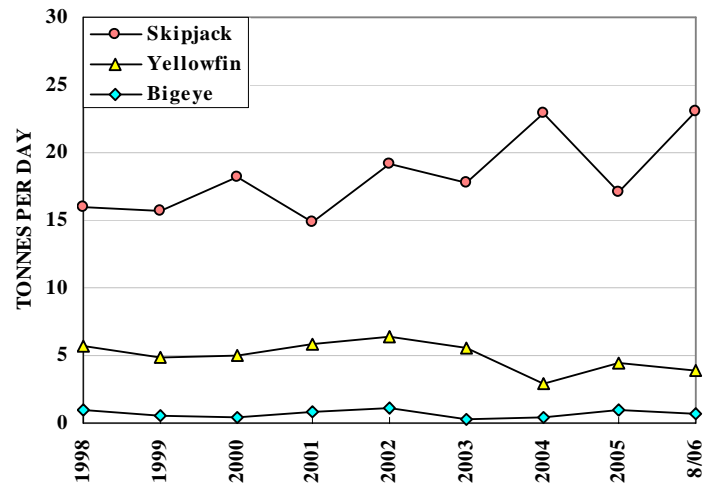


Figure 42. Papua New Guinea purse seiner catch rates

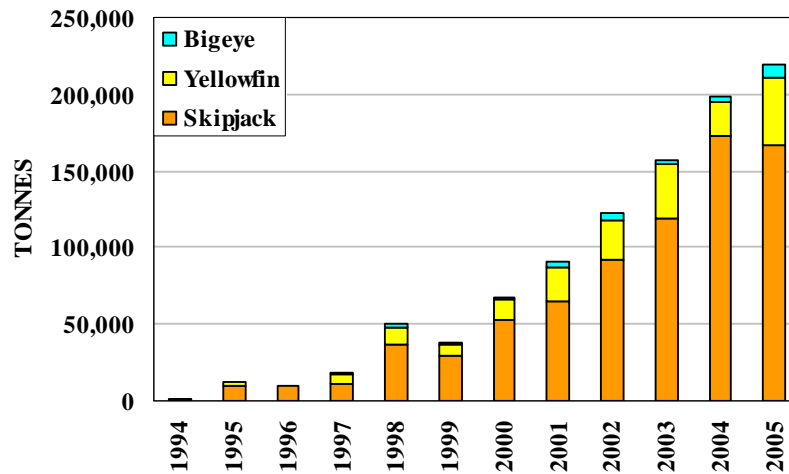


Figure 43. Catches by Papua New Guinea purse seiners

Table 18. Catch statistics for Papua New Guinea purse seiners. Units: Effort = days fished or searched; Catch = tonnes; CPUE = tonnes per day fished or searched.

MONTH	EFFORT	SKIPJACK			YELLOWFIN			BIGEYE			TOTAL	
		CATCH	CPUE	%	CATCH	CPUE	%	CATCH	CPUE	%	CATCH	CPUE
JAN/04	584	15,459	26.48	88	1,936	3.32	11	230	0.39	1	17,626	30.19
FEB	569	14,704	25.84	88	1,780	3.13	11	286	0.50	2	16,770	29.48
MAR	420	11,845	28.23	95	540	1.29	4	141	0.34	1	12,527	29.85
APR	418	12,594	30.16	96	497	1.19	4	92	0.22	1	13,184	31.57
MAY	632	15,605	24.69	89	1,595	2.52	9	390	0.62	2	17,595	27.84
JUN	647	8,666	13.40	85	1,237	1.91	12	300	0.46	3	10,213	15.79
JUL	710	11,194	15.76	68	4,911	6.92	30	461	0.65	3	16,567	23.33
AUG	735	15,829	21.53	84	2,624	3.57	14	397	0.54	2	18,856	25.65
SEP	647	15,448	23.87	86	2,267	3.50	13	327	0.51	2	18,061	27.91
OCT	746	19,345	25.93	89	2,044	2.74	9	361	0.48	2	21,765	29.17
NOV	680	14,633	21.52	92	1,077	1.58	7	270	0.40	2	15,991	23.51
DEC	719	17,006	23.65	90	1,681	2.34	9	289	0.40	2	18,983	26.40
TOT	7,507	172,328	22.96	87	22,188	2.96	11	3,543	0.47	2	198,137	26.39
AVG	626	14,361	23.42	87	1,849	2.83	11	295	0.46	2	16,511	26.72
JAN/05	592	9,696	16.38	85	1,510	2.55	13	243	0.41	2	11,459	19.36
FEB	622	9,820	15.79	82	1,791	2.88	15	351	0.56	3	11,967	19.24
MAR	715	16,024	22.41	83	2,640	3.69	14	621	0.87	3	19,306	27.00
APR	718	10,641	14.82	72	3,317	4.62	22	855	1.19	6	14,829	20.65
MAY	968	14,209	14.68	74	4,001	4.13	21	1,063	1.10	6	19,299	19.94
JUN	940	19,387	20.62	82	3,378	3.59	14	873	0.93	4	23,672	25.18
JUL	990	14,634	14.78	71	4,788	4.84	23	1,110	1.12	5	20,555	20.76
AUG	976	13,589	13.92	68	5,355	5.49	27	1,047	1.07	5	20,018	20.51
SEP	991	12,804	12.92	65	5,820	5.87	30	1,029	1.04	5	19,685	19.86
OCT	836	15,711	18.79	76	3,910	4.68	19	938	1.12	5	20,599	24.64
NOV	764	13,786	18.05	75	3,714	4.86	20	793	1.04	4	18,309	23.97
DEC	720	17,506	24.31	79	3,795	5.27	17	747	1.04	3	22,075	30.66
TOT	9,832	167,808	17.07	76	44,019	4.48	20	9,670	0.98	4	221,772	22.56
AVG	819	13,984	17.29	76	3,668	4.37	20	806	0.96	4	18,481	22.65
JAN/06	627	14,362	22.91	83	2,458	3.92	14	405	0.65	2	17,245	27.50
FEB	454	13,835	30.47	94	659	1.45	4	221	0.49	1	14,723	32.43
MAR	519	10,950	21.10	82	2,076	4.00	16	349	0.67	3	13,389	25.80
APR	497	13,286	26.73	89	1,401	2.82	9	265	0.53	2	14,959	30.10
MAY	639	13,955	21.84	79	3,124	4.89	18	597	0.93	3	17,694	27.69
JUN	533	13,115	24.61	79	2,928	5.49	18	626	1.18	4	16,679	31.29
JUL	591	11,518	19.49	80	2,592	4.39	18	354	0.60	2	14,472	24.49
AUG	496	9,410	18.97	83	1,605	3.24	14	357	0.72	3	11,379	22.94
SEP
OCT
NOV
DEC
TOT	4,356	100,431	23.06	83	16,843	3.87	14	3,173	0.73	3	120,540	27.67
AVG	545	12,554	23.27	83	2,105	3.78	14	397	0.72	3	15,068	27.78

PURSE SEINE: CHINESE TAIPEI

The statistics in Table 19, which cover the Chinese Taipei purse seiners in the WCPFC Statistical Area (Figure 1), were determined from catch and effort data held at SPC on 31 December 2006; statistics for 2004–2005, but not 2006, have been raised to represent the total catch and effort. Figure 44 presents catch rates for skipjack, yellowfin and bigeye. Figure 45 presents estimates of annual catches.

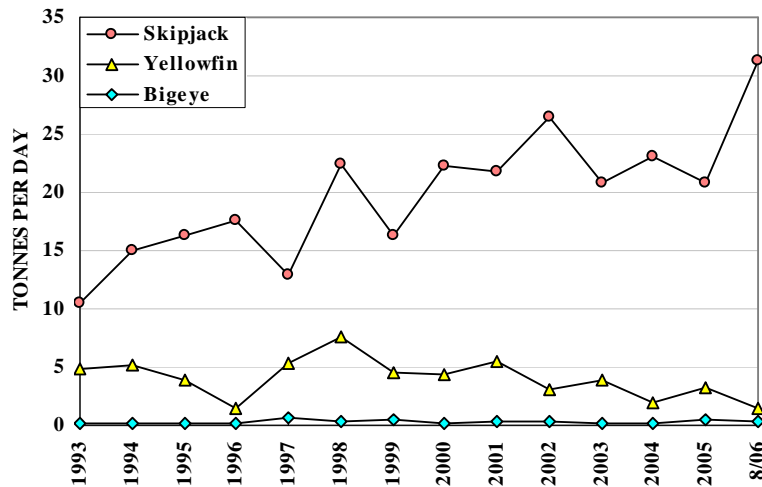


Figure 44. Chinese Taipei purse seiner catch rates

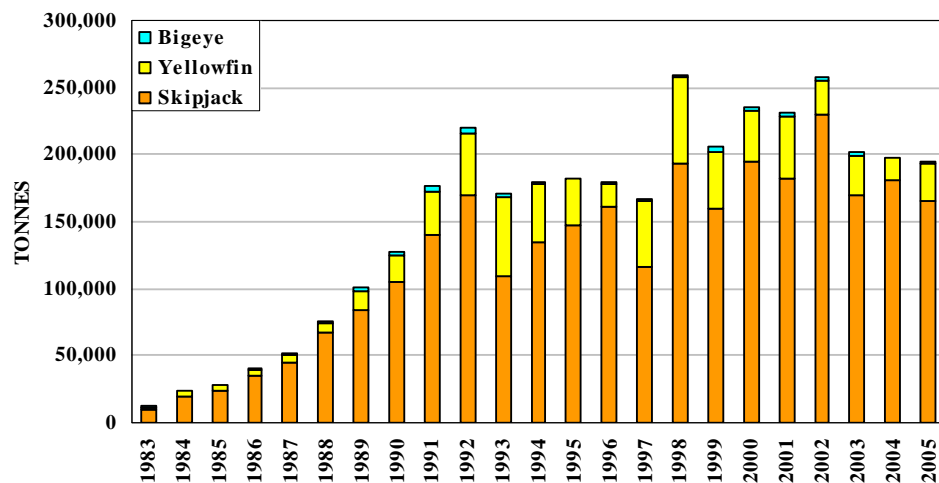


Figure 45. Catches by Chinese Taipei purse seiners

Table 19. Catch statistics for Chinese Taipei purse seiners. Units: Effort = days fished or searched; Catch = tonnes; CPUE = tonnes per day fished or searched.

MONTH	EFFORT	SKIPJACK			YELLOWFIN			BIGEYE			TOTAL	
		CATCH	CPUE	%	CATCH	CPUE	%	CATCH	CPUE	%	CATCH	CPUE
JAN/04	665	21,336	32.08	92	1,530	2.30	7	213	0.32	1	23,079	34.71
FEB	553	13,154	23.79	91	1,195	2.16	8	158	0.29	1	14,507	26.23
MAR	572	16,003	27.98	96	476	0.83	3	105	0.18	1	16,584	28.99
APR	655	17,633	26.92	96	700	1.07	4	119	0.18	1	18,452	28.17
MAY	699	16,312	23.34	94	984	1.41	6	117	0.17	1	17,414	24.91
JUN	670	8,539	12.74	93	493	0.74	5	118	0.18	1	9,150	13.66
JUL	736	12,022	16.33	76	3,630	4.93	23	166	0.23	1	15,818	21.49
AUG	702	12,302	17.52	87	1,629	2.32	12	201	0.29	1	14,137	20.14
SEP	682	13,009	19.07	83	2,548	3.74	16	176	0.26	1	15,741	23.08
OCT	749	17,881	23.87	95	874	1.17	5	131	0.17	1	18,897	25.23
NOV	699	18,624	26.64	97	448	0.64	2	113	0.16	1	19,192	27.46
DEC	697	19,586	28.10	95	828	1.19	4	108	0.16	1	20,533	29.46
TOT	8,079	186,401	23.07	92	15,335	1.90	8	1,724	0.21	1	203,503	25.19
AVG	673	15,533	23.20	92	1,278	1.88	8	144	0.22	1	16,959	25.29
JAN/05	717	11,354	15.84	91	1,034	1.44	8	126	0.18	1	12,516	17.46
FEB	619	10,294	16.63	88	1,253	2.02	11	136	0.22	1	11,685	18.88
MAR	625	14,575	23.32	86	1,937	3.10	11	346	0.55	2	16,864	26.98
APR	671	8,704	12.97	78	1,987	2.96	18	479	0.71	4	11,172	16.65
MAY	648	12,091	18.66	83	1,927	2.97	13	496	0.77	3	14,518	22.40
JUN	671	20,108	29.97	93	1,282	1.91	6	278	0.41	1	21,671	32.30
JUL	753	17,632	23.42	88	2,171	2.88	11	287	0.38	1	20,092	26.68
AUG	754	13,544	17.96	75	4,103	5.44	23	404	0.54	2	18,052	23.94
SEP	723	10,997	15.21	68	4,300	5.95	27	519	0.72	3	16,129	22.31
OCT	692	17,778	25.69	87	2,303	3.33	11	371	0.54	2	20,462	29.57
NOV	699	17,443	24.95	87	2,176	3.11	11	399	0.57	2	20,026	28.65
DEC	666	17,327	26.02	88	1,987	2.98	10	430	0.65	2	19,754	29.66
TOT	8,238	171,847	20.86	85	26,460	3.21	13	4,271	0.52	2	202,941	24.64
AVG	686	14,321	20.89	85	2,205	3.17	13	356	0.52	2	16,912	24.62
JAN/06	659	18,501	28.07	93	1,239	1.88	6	203	0.31	1	19,952	30.28
FEB	561	18,039	32.16	97	428	0.76	2	119	0.21	1	18,593	33.14
MAR	602	21,892	36.37	95	973	1.62	4	103	0.17	0	22,973	38.16
APR	544	19,725	36.26	96	691	1.27	3	147	0.27	1	20,571	37.81
MAY	325	9,441	29.05	93	637	1.96	6	114	0.35	1	10,196	31.37
JUN	59	723	12.25	92	59	1.01	8	4	0.06	0	786	13.32
JUL	129	2,115	16.40	77	456	3.53	17	174	1.35	6	2,745	21.28
AUG	52	1,180	22.69	98	14	0.28	1	6	0.11	0	1,200	23.08
SEP
OCT
NOV
DEC
TOT	2,931	91,616	31.26	94	4,497	1.53	5	870	0.30	1	97,015	33.10
AVG	366	11,452	26.66	94	562	1.54	5	109	0.35	1	12,127	28.56

PURSE SEINE: UNITED STATES OF AMERICA

The statistics in Table 20, which cover the United States purse seiners in the WCPFC Statistical Area (Figure 1), were determined from catch and effort data held at SPC on 31 December 2006; statistics for 2004–2005, but not 2006, have been raised to represent the total catch and effort. Figure 46 presents catch rates for skipjack, yellowfin and bigeye. Figure 47 presents estimates of annual catches.

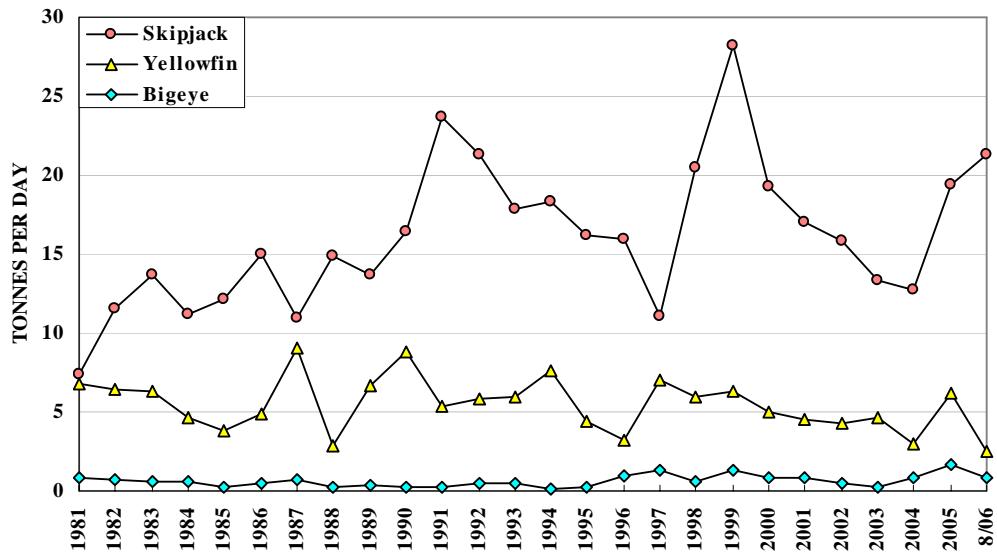


Figure 46. United States purse seiner catch rates

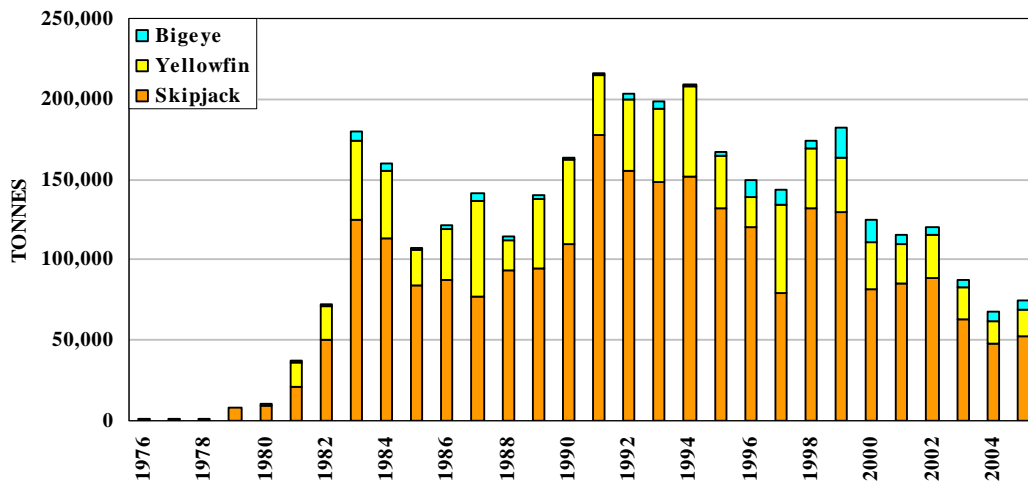


Figure 47. Catches by United States purse seiners

Table 20. Catch statistics for United States purse seiners. Units: Effort = days fished or searched; Catch = tonnes; CPUE = tonnes per day fished or searched.

MONTH	EFFORT	SKIPJACK			YELLOWFIN			BIGEYE			TOTAL	
		CATCH	CPUE	%	CATCH	CPUE	%	CATCH	CPUE	%	CATCH	CPUE
JAN/04	256	2,808	10.97	79	559	2.19	16	198	0.77	6	3,566	13.93
FEB	401	3,727	9.30	70	1,259	3.14	24	335	0.84	6	5,321	13.27
MAR	531	6,597	12.42	78	1,432	2.70	17	419	0.79	5	8,449	15.91
APR	386	4,604	11.93	68	1,765	4.57	26	437	1.13	6	6,807	17.63
MAY	291	3,529	12.13	69	1,338	4.60	26	218	0.75	4	5,084	17.47
JUN	338	3,768	11.15	72	1,123	3.32	21	356	1.05	7	5,247	15.52
JUL	462	3,418	7.40	64	1,424	3.08	27	458	0.99	9	5,300	11.47
AUG	393	5,968	15.19	81	1,080	2.75	15	352	0.89	5	7,400	18.83
SEP	282	4,475	15.87	84	649	2.30	12	196	0.69	4	5,320	18.87
OCT	368	6,500	17.66	87	728	1.98	10	210	0.57	3	7,438	20.21
NOV	273	4,809	17.62	85	668	2.45	12	211	0.77	4	5,688	20.83
DEC	237	3,300	13.92	86	433	1.83	11	124	0.52	3	3,858	16.28
TOT	4,218	53,503	12.68	77	12,459	2.95	18	3,514	0.83	5	69,476	16.47
AVG	352	4,459	12.96	77	1,038	2.91	18	293	0.81	5	5,790	16.69
JAN/05	276	2,442	8.85	78	525	1.90	17	174	0.63	6	3,141	11.38
FEB	310	3,606	11.63	85	466	1.50	11	171	0.55	4	4,243	13.69
MAR	364	6,958	19.12	83	1,049	2.88	12	405	1.11	5	8,417	23.12
APR	266	4,995	18.78	77	1,058	3.98	16	434	1.63	7	6,487	24.39
MAY	250	6,556	26.22	79	1,248	4.99	15	465	1.86	6	8,268	33.07
JUN	244	6,142	25.17	76	1,379	5.65	17	569	2.33	7	8,089	33.15
JUL	241	4,134	17.15	59	2,188	9.08	31	632	2.62	9	6,954	28.85
AUG	240	3,664	15.27	69	1,220	5.08	23	436	1.82	8	5,320	22.17
SEP	231	2,979	12.89	46	2,850	12.34	44	648	2.80	10	6,476	28.03
OCT	240	5,001	20.84	48	4,883	20.35	47	580	2.42	6	10,466	43.61
NOV	235	8,073	34.35	85	1,198	5.10	13	215	0.91	2	9,486	40.36
DEC	145	4,485	30.93	85	621	4.28	12	156	1.08	3	5,262	36.29
TOT	3,042	59,036	19.41	71	18,683	6.14	23	4,883	1.61	6	82,609	27.16
AVG	254	4,920	20.10	71	1,557	6.43	23	407	1.65	6	6,884	28.18
JAN/06	167	918	5.50	66	399	2.39	29	75	0.45	5	1,391	8.33
FEB	246	5,203	21.15	91	387	1.57	7	121	0.49	2	5,711	23.22
MAR	203	5,277	25.99	91	357	1.76	6	135	0.67	2	5,769	28.42
APR	210	6,857	32.66	91	477	2.27	6	206	0.98	3	7,540	35.91
MAY	188	4,682	24.90	89	402	2.14	8	175	0.93	3	5,259	27.97
JUN	79	804	10.18	84	127	1.61	13	30	0.37	3	961	12.16
JUL	64	974	15.22	57	610	9.53	36	121	1.89	7	1,705	26.64
AUG	14	299	21.38	66	109	7.77	24	48	3.42	10	456	32.56
SEP
OCT
NOV
DEC
TOT	1,171	25,014	21.36	87	2,868	2.45	10	910	0.78	3	28,793	24.59
AVG	146	3,127	19.62	87	359	3.63	10	114	1.15	3	3,599	24.40