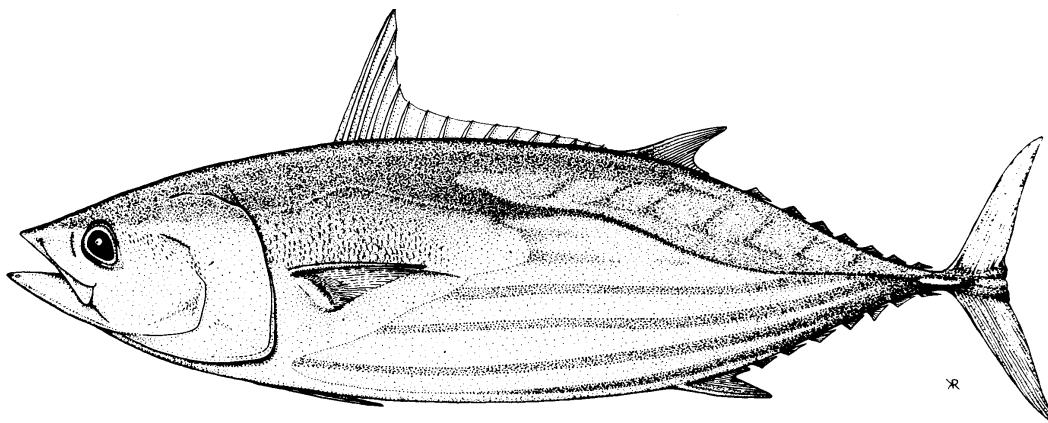




**WESTERN AND CENTRAL PACIFIC
TUNA BULLETIN**

JULY 2007



Western and Central Pacific Fisheries Commission
Pohnpei, Federated States of Micronesia
<http://www.wcpfc.org>
contact@wcpfc.org

© Copyright Western and Central Pacific Fisheries Commission, 2007

All rights for commercial / for profit reproduction or translation, in any form, reserved. The WCPFC authorises the partial reproduction or translation of this material for scientific, educational or research purposes, provided that WCPFC and the source document are properly acknowledged. Permission to reproduce the document and/or translate in whole, in any form, whether for commercial / for profit or non-profit purposes, must be requested in writing. Original WCPFC artwork may not be altered or separately published without permission.

TABLE OF CONTENTS

MAPS

WCPFC Statistical Area	1
Longline Catch	2
Pole-and-Line Catch	3
Purse-Seine Catch.....	4

LONGLINE

Australia	5
Cook Islands	7
Federated States of Micronesia	9
French Polynesia	11
Japan	13
Republic of Korea.....	15
New Caledonia	17
Papua New Guinea	19
Samoa.....	21
Chinese Taipei, distant-water.....	23

POLE AND LINE

Japan	25
Solomon Islands	27

PURSE SEINE

Federated States of Micronesia	29
Japan	31
Republic of Korea.....	33
Papua New Guinea	35
Chinese Taipei.....	37
United States of America.....	39

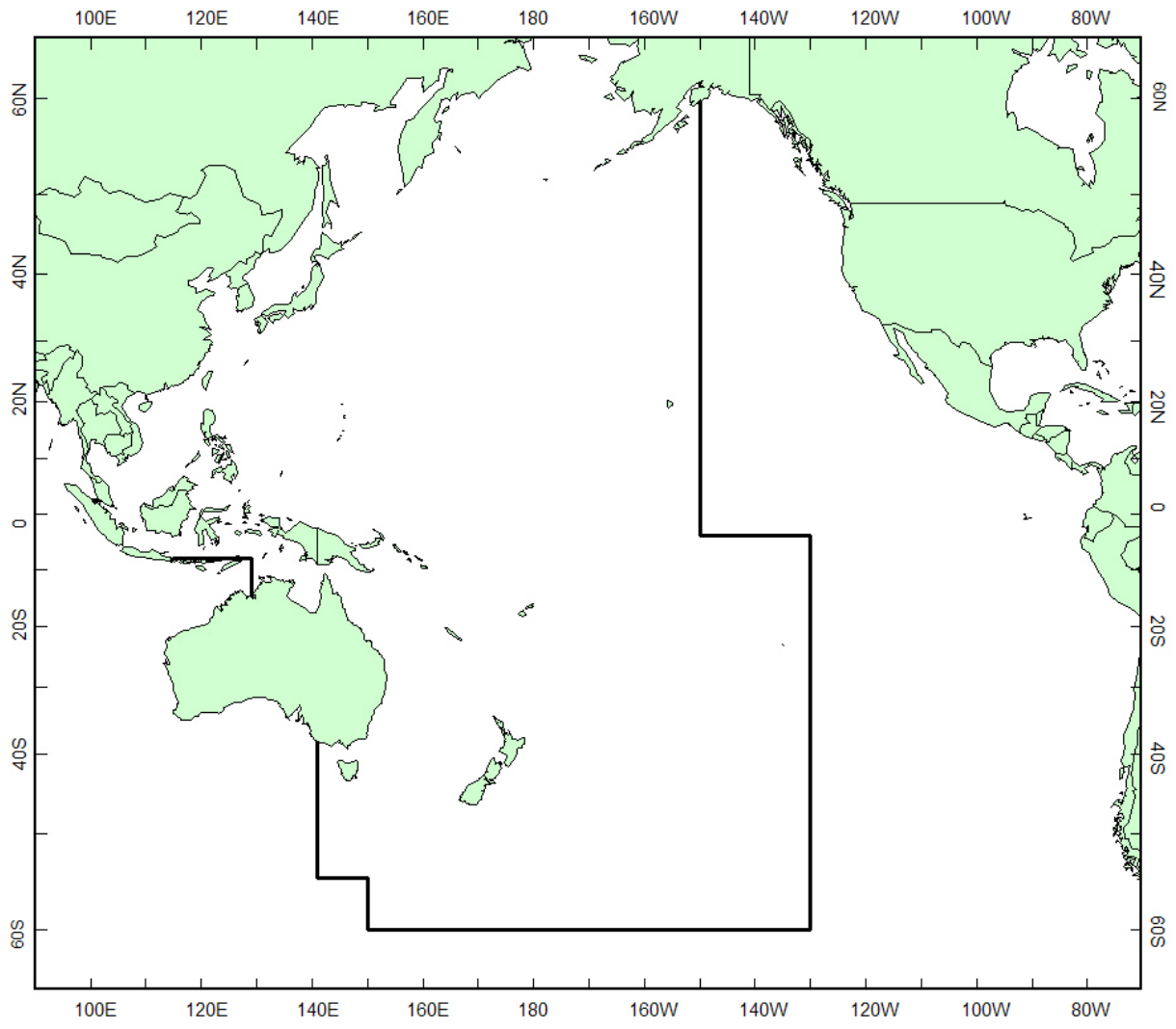


Figure 1. WCPFC Statistical Area

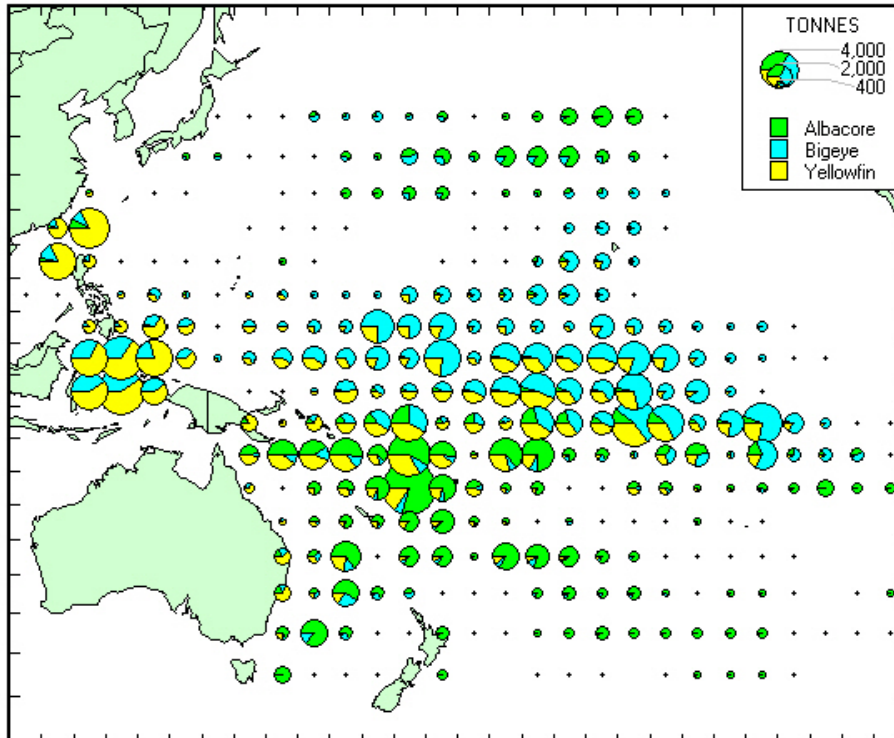


Figure 2. Longline catch in 2004, determined from data held at SPC on 30 June 2007

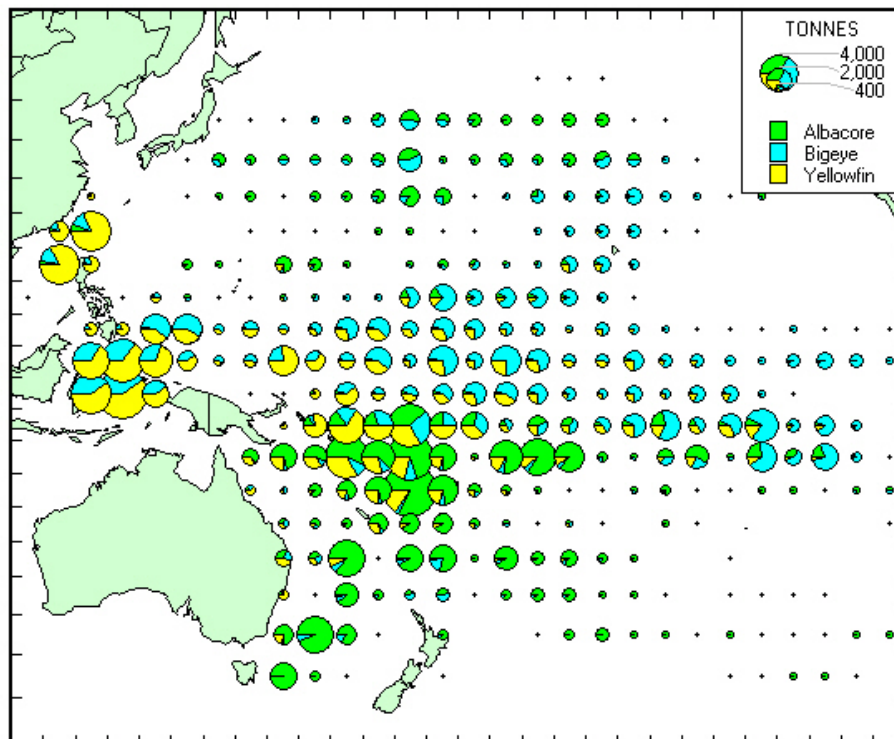


Figure 3. Longline catch in 2005, determined from data held at SPC on 30 June 2007

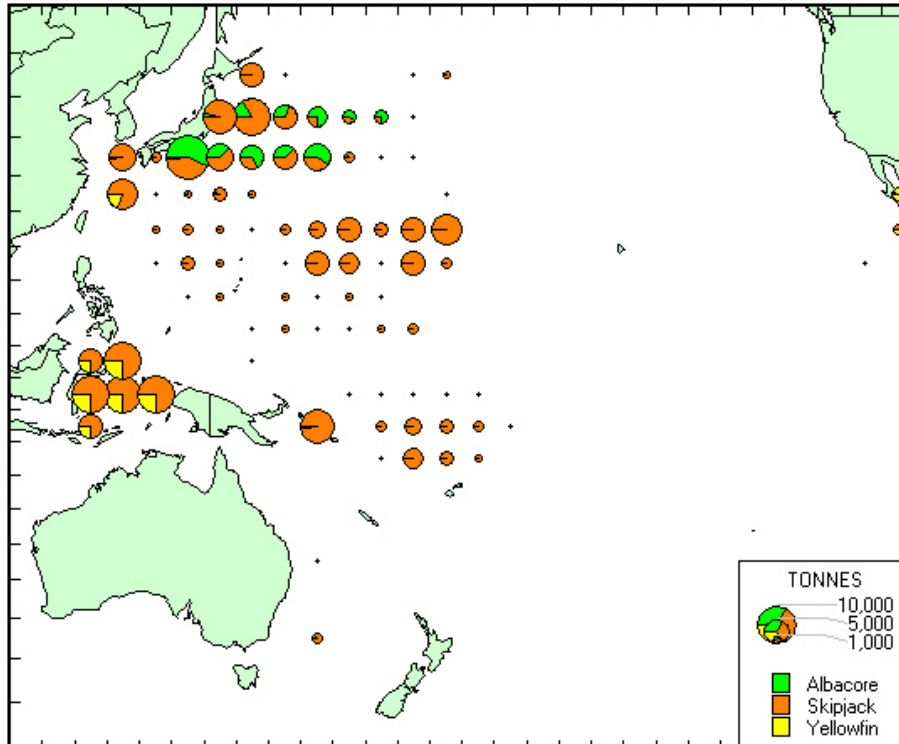


Figure 4. Pole-and-line catch in 2004, determined from data held at SPC on 30 June 2007

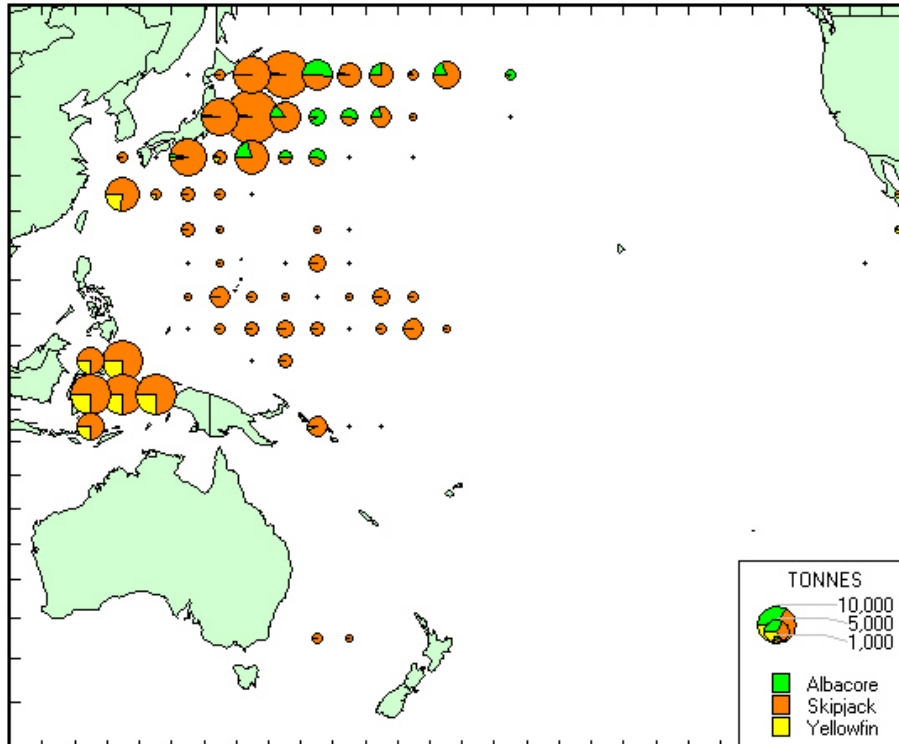


Figure 5. Pole-and-line catch in 2005, determined from data held at SPC on 30 June 2007

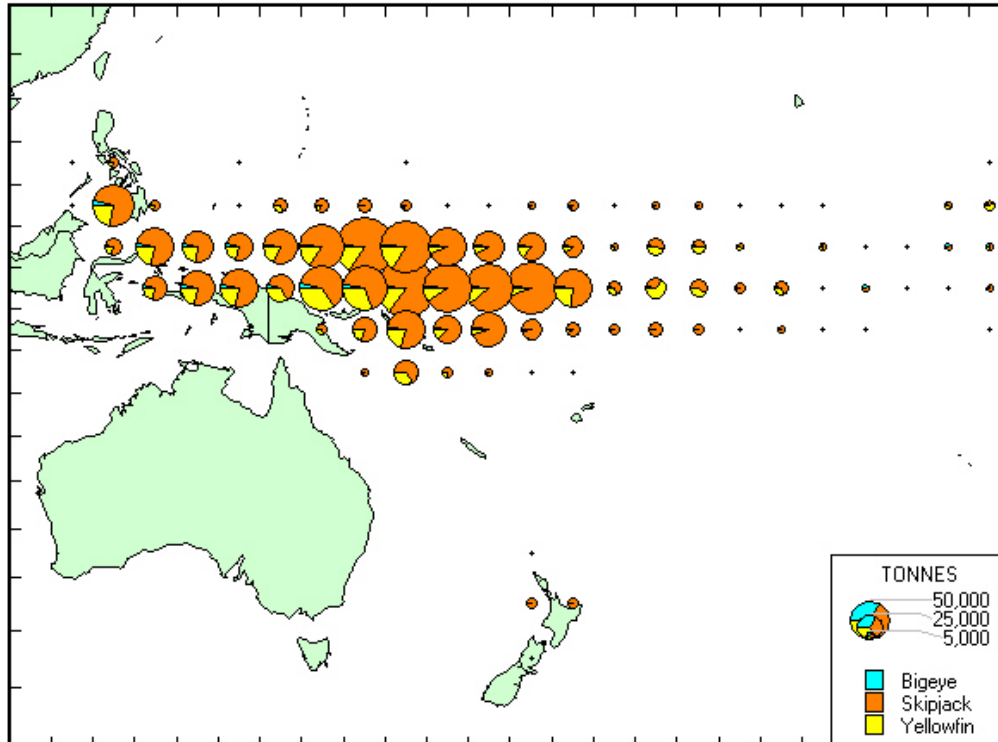


Figure 6. Purse-seine catch in 2005, determined from data held at SPC on 30 June 2007

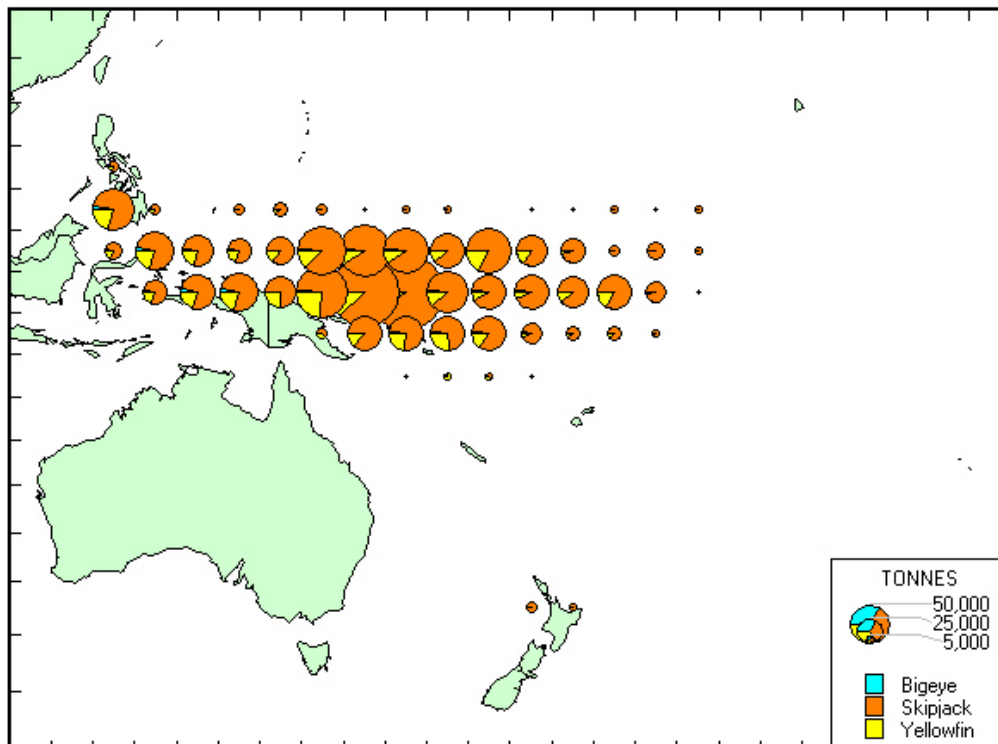


Figure 7. Purse-seine catch in 2006, determined from data held at SPC on 30 June 2007

LONGLINE: AUSTRALIA

The statistics in Table 1, which cover Australian longliners in the WCPFC Statistical Area (Figure 1), were determined from catch and effort data held at SPC on 30 June 2007; statistics for 2005–2006, but not 2007, have been raised to represent the total catch of target tuna species and effort. Figure 8 presents catch rates for albacore, bigeye and yellowfin. Figure 9 presents estimates of annual catches reported to SPC and WCPFC.

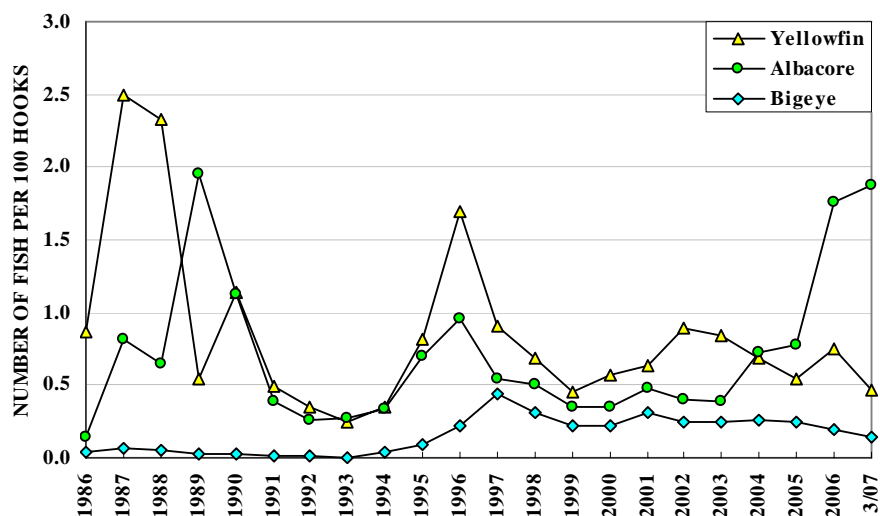


Figure 8. Australian longliner catch rates

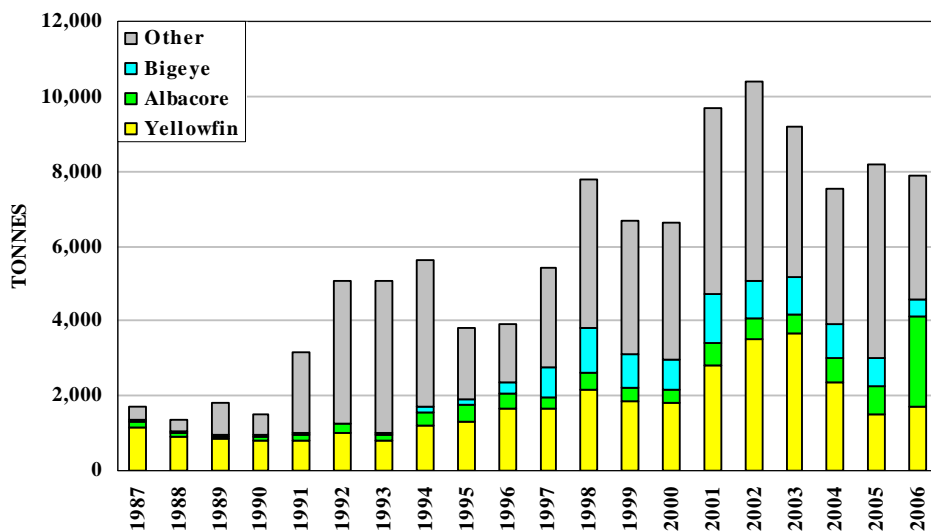


Figure 9. Catches by Australian longliners

Table 1. Catch statistics for Australian longliners. Units: Effort = hundreds of hooks; Catch = tonnes; CPUE = number of fish per 100 hooks.

MONTH	EFFORT	ALBACORE		BIGEYE		YELLOWFIN		OTHERS	TOTAL	
		CATCH	CPUE	CATCH	CPUE	CATCH	CPUE	CATCH	CATCH	CPUE
JAN/05	7,896	11	0.14	32	0.12	124	0.56	346	512	2.37
FEB	10,053	18	0.19	60	0.18	162	0.47	412	652	2.35
MAR	9,506	16	0.18	69	0.21	152	0.50	371	608	2.28
APR	10,609	50	0.46	130	0.35	123	0.36	388	692	2.69
MAY	8,969	78	0.85	168	0.53	113	0.44	342	701	3.07
JUN	8,964	118	1.33	101	0.36	103	0.40	424	747	3.34
JUL	10,213	163	1.68	117	0.33	136	0.38	410	826	4.68
AUG	8,203	130	1.65	62	0.25	175	0.67	306	674	4.47
SEP	9,976	140	1.36	55	0.21	195	0.73	416	807	4.06
OCT	9,546	64	0.61	33	0.14	158	0.71	469	723	2.83
NOV	8,777	31	0.31	26	0.12	104	0.55	539	699	2.92
DEC	7,049	61	0.55	24	0.13	111	0.79	716	912	3.71
TOT	109,761	881	0.78	876	0.25	1,657	0.54	5,139	8,553	3.22
AVG	9,147	73	0.78	73	0.25	138	0.55	428	713	3.23
JAN/06	7,263	62	0.54	22	0.11	89	0.61	475	648	3.47
FEB	6,150	34	0.35	28	0.13	63	0.53	302	427	2.68
MAR	6,295	60	0.56	28	0.13	92	0.58	380	559	2.89
APR	7,622	125	1.00	66	0.31	139	0.74	300	631	3.61
MAY	8,726	214	1.67	82	0.36	171	0.77	307	775	4.47
JUN	8,324	296	2.42	57	0.30	172	0.79	309	834	4.86
JUL	8,916	316	2.53	49	0.22	180	0.77	215	760	5.10
AUG	9,262	389	2.96	40	0.18	298	1.24	205	932	5.80
SEP	8,373	307	2.36	24	0.13	198	0.93	163	692	4.79
OCT	7,300	239	2.04	16	0.10	138	0.75	180	574	4.10
NOV	6,825	200	1.74	19	0.11	107	0.61	275	601	4.14
DEC	5,812	194	1.98	21	0.16	75	0.46	225	515	4.49
TOT	90,869	2,436	1.76	452	0.19	1,722	0.75	3,337	7,948	4.30
AVG	7,572	203	1.68	38	0.19	143	0.73	278	662	4.20
JAN/07	6,448	262	2.35	17	0.11	77	0.42	197	553	4.64
FEB	5,039	122	1.37	22	0.16	78	0.51	170	392	4.06
MAR	318	3	0.61	3	0.37	5	0.53	10	22	3.14
APR
MAY
JUN
JUL
AUG
SEP
OCT
NOV
DEC
TOT	11,805	387	1.88	43	0.14	159	0.46	377	966	4.35
AVG	3,935	129	1.44	14	0.21	53	0.49	126	322	3.95

LONGLINE: COOK ISLANDS

The statistics in Table 2, which cover Cook Islands longliners in the WCPFC Statistical Area (Figure 1), were determined from catch and effort data held at SPC on 30 June 2007; statistics for 2005–2006, but not 2007, have been raised to represent the total catch of target tuna species and effort. Figure 10 presents catch rates for albacore, bigeye and yellowfin. Figure 11 presents estimates of annual catches reported to SPC and WCPFC.

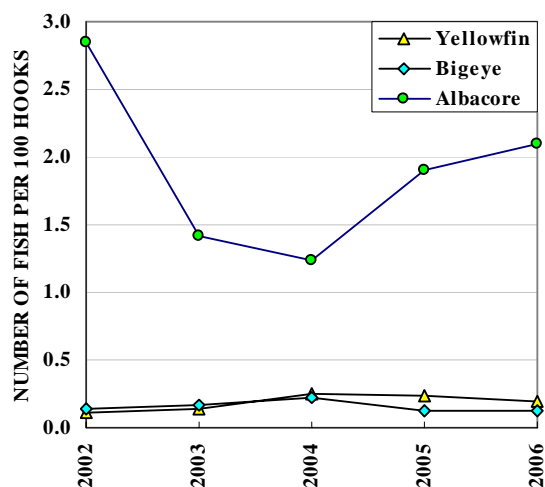


Figure 10. Cook Islands longliner catch rates

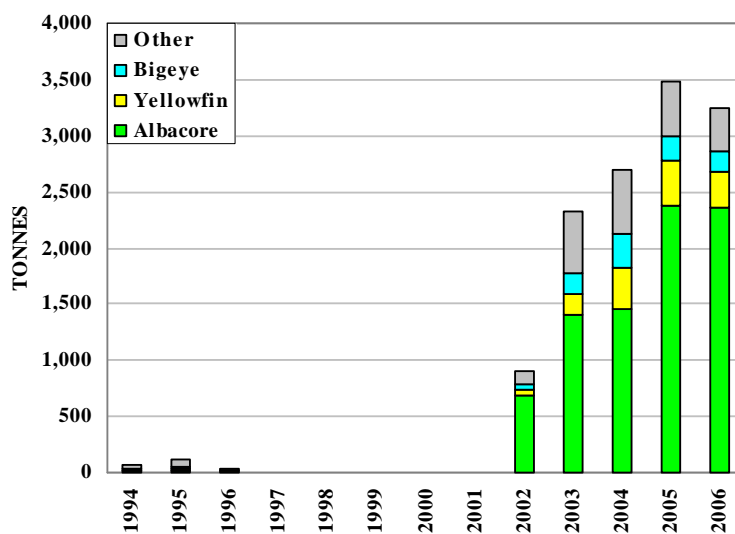


Figure 11. Catches by Cook Islands longliners

Table 2. Catch statistics for Cook Islands longliners. Units: Effort = hundreds of hooks; Catch = tonnes; CPUE = number of fish per 100 hooks.

MONTH	EFFORT	ALBACORE		BIGEYE		YELLOWFIN		OTHERS	TOTAL	
		CATCH	CPUE	CATCH	CPUE	CATCH	CPUE	CATCH	CATCH	CPUE
JAN/05	5,776	59	0.60	10	0.08	9	0.06	44	122	1.14
FEB	3,303	24	0.39	6	0.07	7	0.07	41	78	0.98
MAR	4,636	18	0.23	8	0.07	19	0.12	52	96	0.77
APR	2,768	11	0.22	8	0.10	11	0.12	32	61	0.80
MAY	8,243	266	1.96	30	0.15	42	0.22	71	410	2.80
JUN	9,078	341	2.31	23	0.10	69	0.29	72	504	3.33
JUL	8,174	176	1.36	38	0.20	73	0.36	48	335	2.25
AUG	7,765	265	2.20	22	0.13	50	0.36	35	371	3.00
SEP	9,040	325	2.26	22	0.10	46	0.27	46	439	2.89
OCT	7,826	341	2.70	22	0.13	39	0.32	39	442	3.51
NOV	7,951	405	3.20	17	0.11	36	0.23	33	491	3.83
DEC	6,779	261	2.40	9	0.07	13	0.10	27	311	2.85
TOT	81,340	2,491	1.90	217	0.12	414	0.24	539	3,661	2.63
AVG	6,778	208	1.65	18	0.11	35	0.21	45	305	2.34
JAN/06	4,395	113	1.50	6	0.07	23	0.25	25	167	2.26
FEB	2,480	39	0.94	8	0.15	9	0.21	9	66	1.53
MAR	3,626	67	1.08	8	0.11	40	0.42	17	131	1.90
APR	3,855	58	0.93	16	0.21	22	0.22	21	116	1.69
MAY	6,354	221	2.09	25	0.19	57	0.36	45	348	3.22
JUN	6,249	219	2.23	13	0.10	29	0.21	33	294	3.04
JUL	8,661	374	2.68	22	0.12	43	0.21	55	494	3.68
AUG	9,935	385	2.42	24	0.11	29	0.11	46	484	3.18
SEP	8,083	353	2.74	20	0.11	35	0.17	50	458	3.64
OCT	8,806	300	2.06	34	0.20	31	0.13	54	420	2.81
NOV	5,659	232	2.43	12	0.10	11	0.12	35	290	3.04
DEC	4,070	115	1.66	7	0.07	2	0.02	23	147	1.99
TOT	72,173	2,475	2.10	195	0.13	331	0.19	413	3,414	2.90
AVG	6,014	206	1.90	16	0.13	28	0.20	34	285	2.66
JAN/07	1,253	27	1.21	1	0.04	3	0.19	14	46	1.93
FEB	679	13	1.04	0	0.01	2	0.14	8	23	1.66
MAR
APR
MAY
JUN
JUL
AUG
SEP
OCT
NOV
DEC
TOT	1,932	40	1.15	2	0.03	5	0.17	22	68	1.83
AVG	966	20	1.12	1	0.03	3	0.16	11	34	1.79

LOONGLINE: FEDERATED STATES OF MICRONESIA

The statistics in Table 3, which cover Federated States of Micronesia longliners in the WCPFC Statistical Area (Figure 1), were determined from catch and effort data held at SPC on 30 June 2007; statistics for 2005–2006, but not 2007, have been raised to represent the total catch of target tuna species and effort. Figure 12 presents catch rates for bigeye and yellowfin. Figure 13 presents estimates of annual catches reported to SPC and WCPFC.

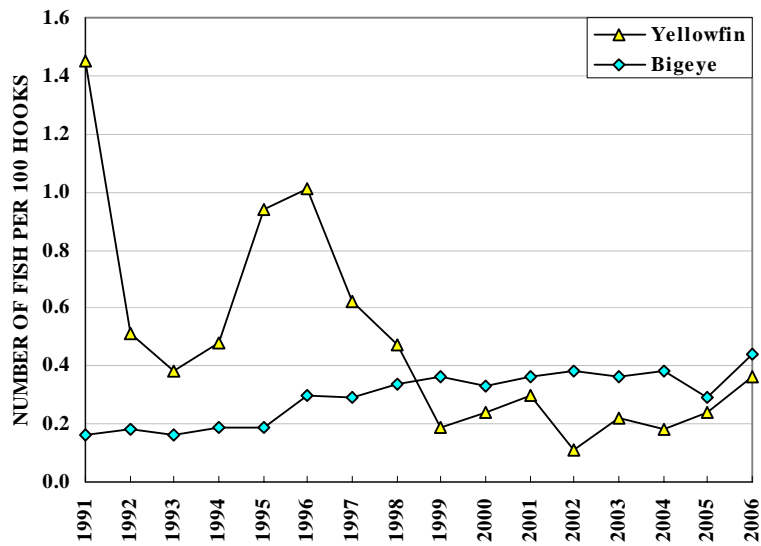


Figure 12. Federated States of Micronesia longliner catch rates

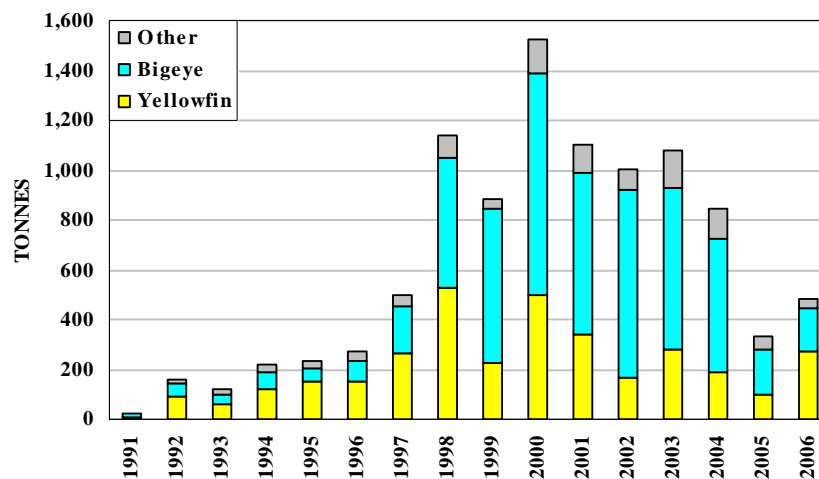


Figure 13. Catches by Federated States of Micronesia longliners

Table 3. Catch statistics for Federated States of Micronesia longliners. Units: Effort = hundreds of hooks; Catch = tonnes; CPUE = number of fish per 100 hooks.

MONTH	EFFORT	ALBACORE		BIGEYE		YELLOWFIN		OTHERS	TOTAL	
		CATCH	CPUE	CATCH	CPUE	CATCH	CPUE	CATCH	CATCH	CPUE
JAN/05	2,834	0	0.00	31	0.31	24	0.33	9	64	0.77
FEB	1,205	0	0.00	9	0.21	7	0.26	4	21	0.60
MAR	695	0	0.00	7	0.26	3	0.15	1	11	0.45
APR	873	0	0.00	7	0.22	2	0.08	1	10	0.33
MAY	2,063	0	0.00	29	0.44	7	0.12	9	44	0.68
JUN	1,277	0	0.00	14	0.33	7	0.23	4	25	0.66
JUL	978	0	0.00	9	0.22	8	0.34	2	19	0.62
AUG	1,142	0	0.00	13	0.31	11	0.42	5	29	0.92
SEP	2,895	0	0.00	25	0.26	10	0.13	8	43	0.50
OCT	2,509	0	0.00	22	0.30	11	0.20	9	42	0.62
NOV	1,823	0	0.00	18	0.30	14	0.36	6	38	0.79
DEC	1,912	0	0.00	18	0.26	11	0.24	5	34	0.59
TOT	20,206	0	0.00	203	0.29	115	0.24	63	382	0.64
AVG	1,684	0	0.00	17	0.28	10	0.24	5	32	0.63
JAN/06	1,063	0	0.00	11	0.31	17	0.69	3	30	1.12
FEB	598	0	0.00	4	0.19	7	0.52	1	13	0.80
MAR	769	0	0.00	8	0.30	10	0.65	2	20	1.10
APR	1,544	0	0.00	15	0.35	12	0.34	2	29	0.78
MAY	1,689	0	0.00	19	0.36	7	0.21	3	30	0.63
JUN	1,900	0	0.00	24	0.46	18	0.40	7	48	0.98
JUL	2,430	0	0.00	31	0.44	39	0.67	8	78	1.23
AUG	2,072	0	0.00	28	0.51	22	0.46	3	54	1.04
SEP	2,384	0	0.00	33	0.46	15	0.27	2	50	0.78
OCT	2,377	0	0.00	43	0.64	9	0.16	3	55	0.85
NOV	1,872	0	0.00	26	0.43	8	0.17	2	35	0.65
DEC	1,931	0	0.00	29	0.47	7	0.14	3	38	0.67
TOT	20,629	0	0.00	269	0.44	172	0.36	40	481	0.88
AVG	1,719	0	0.00	22	0.41	14	0.39	3	40	0.89
JAN/07	1,520	0	0.00	22	0.42	7	0.20	3	32	0.71
FEB	958	0	0.00	8	0.30	3	0.12	2	13	0.49
MAR	258	0	0.00	3	0.37	1	0.26	1	5	0.75
APR	1,499	0	0.00	16	0.35	5	0.13	5	25	0.61
MAY	517	0	0.00	7	0.47	2	0.14	2	11	0.78
JUN
JUL
AUG
SEP
OCT
NOV
DEC
TOT	4,750	0	0.00	56	0.38	18	0.16	13	86	0.64
AVG	950	0	0.00	11	0.38	4	0.17	3	17	0.67

LONGLINE: FRENCH POLYNEسيا

The statistics in Table 4, which cover French Polynesian longliners in the WCPFC Statistical Area (Figure 1), were determined from catch and effort data held at SPC on 30 June 2007; statistics for 2004–2006 have been raised to represent the total catch of target tuna species and effort. Figure 14 presents catch rates for albacore, bigeye and yellowfin. Figure 15 presents estimates of annual catches reported to SPC and WCPFC.

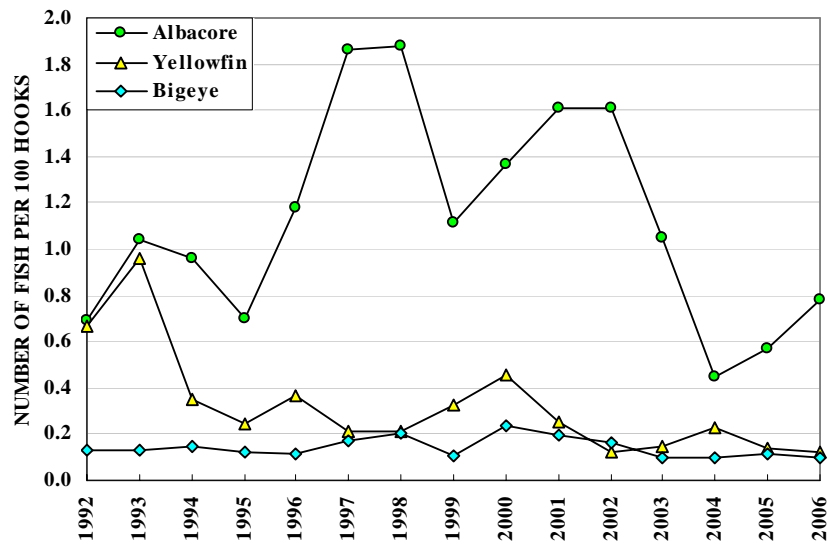


Figure 14. French Polynesian longliner catch rates

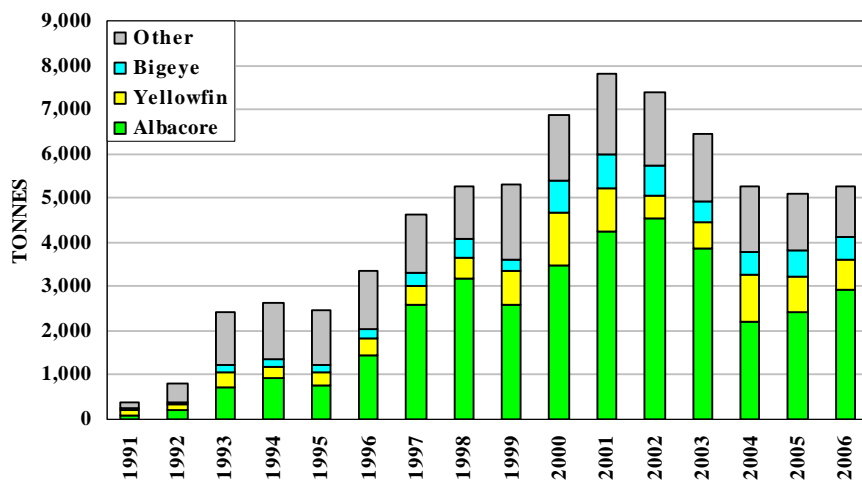


Figure 15. Catches by French Polynesian longliners

Table 4. Catch statistics for French Polynesian longliners. Units: Effort = hundreds of hooks; Catch = tonnes; CPUE = number of fish per 100 hooks.

MONTH	EFFORT	ALBACORE		BIGEYE		YELLOWFIN		OTHERS	TOTAL	
		CATCH	CPUE	CATCH	CPUE	CATCH	CPUE	CATCH	CATCH	CPUE
JAN/04	12,660	103	0.39	19	0.07	46	0.21	86	254	2.01
FEB	17,403	100	0.27	28	0.07	52	0.21	80	259	1.26
MAR	21,976	127	0.29	37	0.08	88	0.25	84	336	1.64
APR	20,451	153	0.38	34	0.08	132	0.40	94	413	2.42
MAY	22,428	246	0.61	51	0.11	129	0.34	108	534	2.14
JUN	23,220	259	0.55	46	0.09	108	0.23	87	499	1.83
JUL	22,455	245	0.51	50	0.09	75	0.15	83	454	2.27
AUG	22,264	206	0.44	64	0.13	87	0.13	106	463	2.66
SEP	16,599	168	0.51	56	0.16	88	0.22	73	385	1.94
OCT	18,415	230	0.62	64	0.15	101	0.21	57	452	2.06
NOV	19,346	214	0.48	33	0.07	94	0.18	128	469	1.68
DEC	13,579	99	0.33	21	0.06	50	0.14	54	223	0.87
TOT	230,796	2,150	0.45	503	0.10	1,049	0.23	1,039	4,741	1.94
AVG	19,233	179	0.45	42	0.10	87	0.22	87	395	1.90
JAN/05	13,308	97	0.36	35	0.11	54	0.15	65	252	1.01
FEB	16,776	115	0.34	38	0.09	77	0.17	94	323	1.11
MAR	18,675	102	0.28	46	0.10	115	0.24	108	372	1.18
APR	18,016	152	0.42	51	0.12	112	0.22	88	403	1.47
MAY	15,829	216	0.76	68	0.18	125	0.27	60	469	1.96
JUN	17,787	213	0.66	72	0.16	107	0.21	54	445	1.48
JUL	16,487	197	0.55	59	0.13	37	0.07	58	352	1.11
AUG	18,410	205	0.51	60	0.11	43	0.06	71	378	1.05
SEP	17,905	229	0.64	60	0.13	50	0.09	59	398	1.13
OCT	18,523	260	0.70	39	0.08	36	0.08	51	386	1.14
NOV	18,694	305	0.78	38	0.07	27	0.06	60	430	1.14
DEC	16,685	266	0.77	27	0.06	21	0.06	51	364	1.16
TOT	207,096	2,358	0.57	591	0.11	804	0.14	821	4,573	1.24
AVG	17,258	196	0.56	49	0.11	67	0.14	68	381	1.25
JAN/06	13,382	155	0.61	30	0.09	34	0.11	54	273	1.02
FEB	18,026	221	0.66	47	0.11	51	0.14	61	380	1.21
MAR	16,769	134	0.43	34	0.10	89	0.21	43	301	0.91
APR	17,306	156	0.49	42	0.10	155	0.30	64	418	1.29
MAY	17,819	312	1.01	51	0.12	108	0.20	70	541	1.88
JUN	15,789	267	0.95	47	0.11	69	0.13	47	430	1.52
JUL	16,075	217	0.67	47	0.10	39	0.06	60	363	1.26
AUG	14,634	276	0.95	55	0.15	43	0.07	60	433	1.70
SEP	15,862	264	0.87	44	0.10	32	0.05	72	412	1.27
OCT	16,537	351	1.09	48	0.10	38	0.06	88	525	1.85
NOV	17,087	323	0.95	22	0.05	30	0.05	89	464	1.83
DEC	15,665	229	0.74	29	0.07	19	0.05	70	347	1.21
TOT	194,952	2,905	0.78	495	0.10	707	0.12	779	4,886	1.42
AVG	16,246	242	0.78	41	0.10	59	0.12	65	407	1.41

LONGLINE: JAPAN

The statistics in Table 5, which cover Japanese offshore and distant-water longliners in the WCPFC Statistical Area (Figure 1), were determined from catch and effort data held at SPC on 30 June 2007. Figure 16 presents catch rates for albacore, bigeye and yellowfin. Figure 17 presents estimates of annual catches reported to SPC and WCPFC.

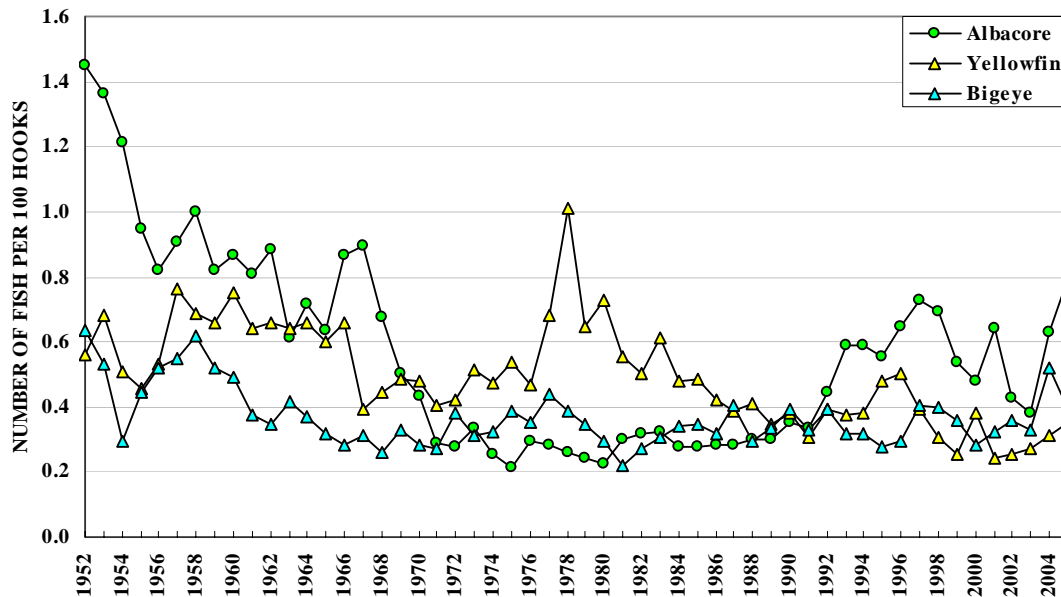


Figure 16. Japanese offshore and distant-water longliner catch rates

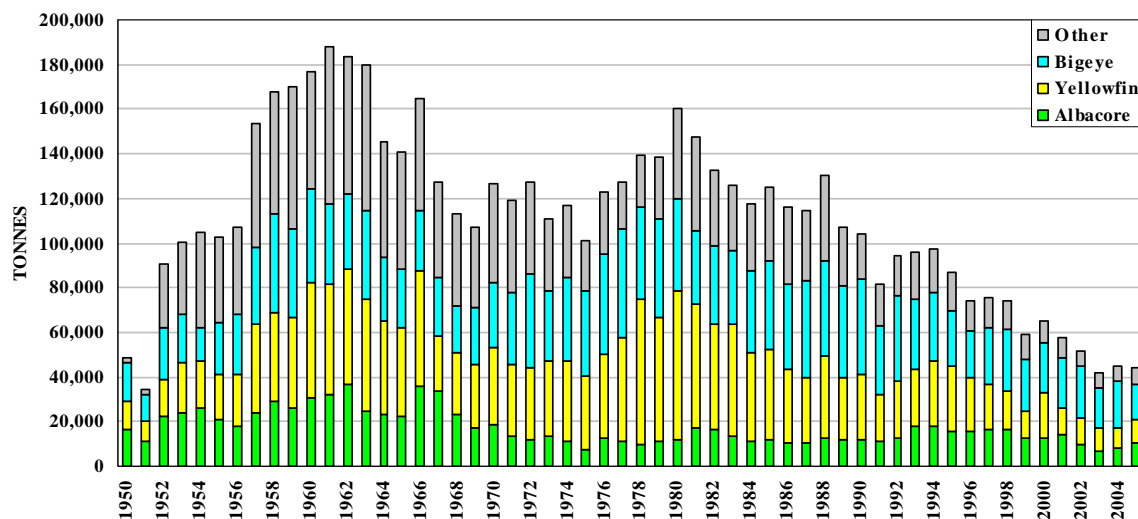


Figure 17. Catches by Japanese offshore and distant-water longliners

Table 5. Catch statistics for Japanese offshore and distant-water longliners. Units: Effort = hundreds of hooks; Catch = tonnes; CPUE = number of fish per 100 hooks.

MONTH	EFFORT	ALBACORE		BIGEYE		YELLOWFIN		OTHERS	TOTAL	
		CATCH	CPUE	CATCH	CPUE	CATCH	CPUE	CATCH	CATCH	CPUE
JAN/03	99,691	676	0.48	2,093	0.50	731	0.28	696	4,197	1.40
FEB	105,008	508	0.34	2,165	0.51	895	0.33	790	4,358	1.30
MAR	114,310	350	0.22	1,892	0.42	1,036	0.36	822	4,101	1.13
APR	126,462	413	0.26	1,400	0.27	1,139	0.36	660	3,611	0.97
MAY	156,127	559	0.29	1,392	0.21	1,014	0.26	394	3,359	0.81
JUN	146,351	628	0.35	1,054	0.18	894	0.24	445	3,021	0.82
JUL	141,990	694	0.41	1,265	0.23	978	0.27	437	3,374	0.96
AUG	108,877	638	0.45	1,266	0.31	811	0.29	490	3,205	1.13
SEP	98,741	343	0.26	1,201	0.32	575	0.23	469	2,589	0.90
OCT	106,413	342	0.23	1,412	0.34	534	0.22	630	2,918	0.91
NOV	100,113	662	0.49	1,528	0.39	454	0.20	542	3,186	1.19
DEC	86,202	1,142	0.96	1,369	0.43	414	0.21	525	3,450	1.71
TOT	1,390,285	6,954	0.38	18,036	0.33	9,476	0.27	6,901	41,367	1.07
AVG	115,857	580	0.40	1,503	0.34	790	0.27	575	3,447	1.10
JAN/04	88,468	675	0.54	1,516	0.49	602	0.26	770	3,563	1.45
FEB	89,119	381	0.30	1,725	0.54	575	0.24	637	3,318	1.22
MAR	89,629	411	0.33	1,659	0.50	649	0.27	690	3,409	1.24
APR	85,619	854	0.83	1,436	0.45	446	0.20	478	3,214	1.57
MAY	97,338	948	0.83	1,535	0.40	349	0.14	305	3,138	1.42
JUN	99,678	906	0.78	1,883	0.46	628	0.24	327	3,744	1.54
JUL	95,202	1,081	0.97	1,704	0.50	1,135	0.45	304	4,224	1.98
AUG	82,843	849	0.82	1,755	0.59	1,380	0.63	428	4,412	2.13
SEP	81,800	406	0.37	1,655	0.57	1,045	0.48	545	3,652	1.55
OCT	89,449	351	0.29	2,003	0.62	829	0.35	733	3,916	1.40
NOV	81,326	734	0.63	1,677	0.60	528	0.24	755	3,693	1.64
DEC	74,394	928	0.88	1,431	0.55	479	0.24	617	3,454	1.82
TOT	1,054,866	8,521	0.63	19,979	0.52	8,647	0.31	6,591	43,737	1.57
AVG	87,906	710	0.63	1,665	0.52	721	0.31	549	3,645	1.58
JAN/05	106,014	1,365	0.55	2,300	0.46	756	0.25	1,141	5,562	1.45
FEB	93,805	785	0.46	2,230	0.54	758	0.28	1,022	4,795	1.49
MAR	96,438	1,176	0.47	1,485	0.42	643	0.27	1,010	4,314	1.32
APR	96,042	2,673	1.00	1,417	0.31	578	0.22	617	5,285	1.63
MAY	96,586	2,611	1.21	1,254	0.27	626	0.22	368	4,859	1.77
JUN	91,146	2,967	1.29	922	0.21	1,011	0.43	332	5,232	1.98
JUL	92,788	1,978	1.00	1,312	0.29	1,969	0.85	481	5,739	2.23
AUG	83,843	2,086	0.98	1,356	0.32	1,415	0.69	370	5,227	2.09
SEP	80,928	1,449	0.60	1,231	0.37	560	0.29	394	3,635	1.35
OCT	76,981	979	0.51	1,577	0.42	335	0.19	679	3,570	1.29
NOV	66,813	956	0.55	1,614	0.60	409	0.24	432	3,411	1.53
DEC	62,945	1,351	0.85	1,713	0.57	432	0.26	352	3,848	1.79
TOT	1,044,328	20,376	0.80	18,412	0.39	9,490	0.35	7,199	55,477	1.66
AVG	87,027	1,698	0.79	1,534	0.40	791	0.35	600	4,623	1.66

LONGLINE: REPUBLIC OF KOREA

The statistics in Table 6, which cover Korean longliners in the WCPFC Statistical Area (Figure 1), were determined from catch and effort data held at SPC on 30 June 2007. Figure 18 presents catch rates for albacore, bigeye and yellowfin. Figure 19 presents estimates of annual catches reported to SPC and WCPFC.

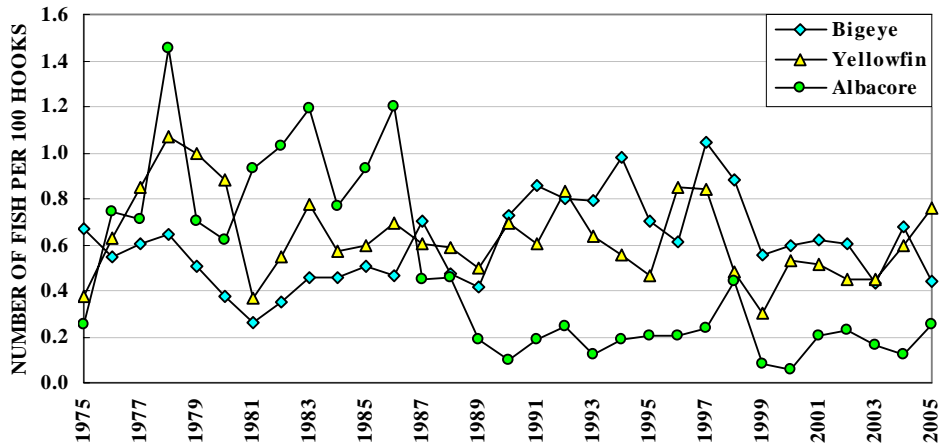


Figure 18. Republic of Korea distant-water longliner catch rates

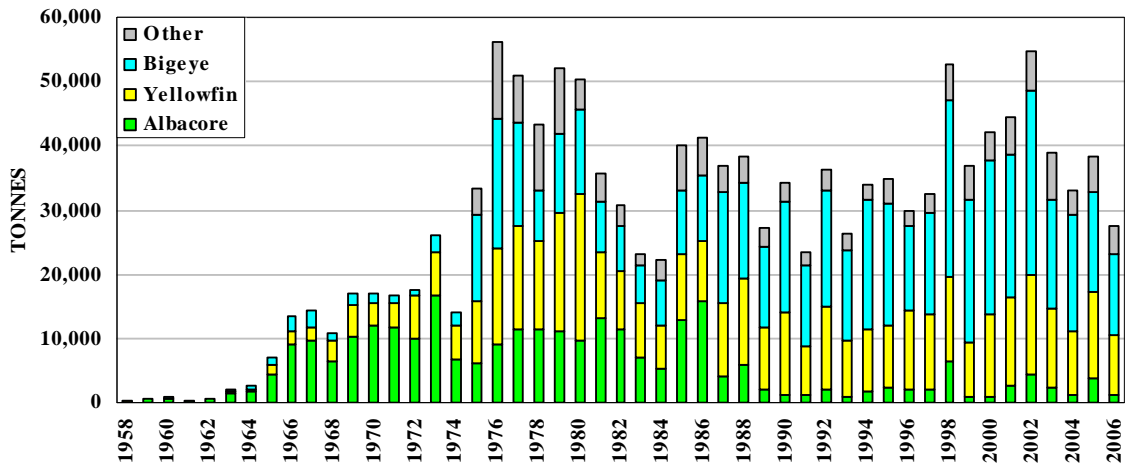


Figure 19. Catches by Republic of Korea distant-water longliners

Table 6. Catch statistics for Republic of Korea distant-water longliners. Units: Effort = hundreds of hooks; Catch = tonnes; CPUE = number of fish per 100 hooks.

MONTH	EFFORT	ALBACORE		BIGEYE		YELLOWFIN		OTHERS	TOTAL	
		CATCH	CPUE	CATCH	CPUE	CATCH	CPUE	CATCH	CATCH	CPUE
JAN/03	105,953	410	0.28	2,196	0.64	1,667	0.50	799	5,073	1.58
FEB	110,143	259	0.16	2,302	0.59	1,357	0.55	810	4,729	1.47
MAR	116,859	91	0.05	2,356	0.56	842	0.41	725	4,015	1.16
APR	101,277	250	0.18	1,532	0.44	747	0.29	663	3,192	1.03
MAY	163,352	264	0.12	1,430	0.26	1,387	0.33	821	3,902	0.81
JUN	107,696	442	0.29	828	0.30	2,218	0.83	643	4,131	1.55
JUL	111,522	192	0.35	1,229	0.33	1,080	0.41	684	3,186	1.22
AUG	98,012	206	0.14	1,313	0.41	520	0.23	580	2,620	0.89
SEP	75,645	103	0.10	1,042	0.40	670	0.45	365	2,180	1.04
OCT	80,415	120	0.11	1,131	0.43	694	0.64	396	2,341	1.29
NOV	55,179	39	0.05	901	0.59	518	0.53	264	1,721	1.31
DEC	56,562	53	0.06	942	0.44	417	0.32	297	1,709	0.91
TOT	1,182,615	2,430	0.17	17,204	0.44	12,117	0.45	7,047	38,798	1.18
AVG	98,551	203	0.16	1,434	0.45	1,010	0.46	587	3,233	1.19
JAN/04	88,975	60	0.05	1,461	0.44	518	0.26	421	2,460	0.84
FEB	64,700	11	0.01	1,155	0.51	291	0.21	269	1,726	0.82
MAR	71,924	33	0.04	1,372	0.58	436	0.28	270	2,110	0.98
APR	38,884	49	0.09	828	0.69	240	0.28	128	1,245	1.13
MAY	66,269	30	0.03	1,716	1.69	339	0.23	159	2,244	2.01
JUN	77,160	199	0.20	1,653	0.80	1,225	0.78	199	3,276	1.85
JUL	85,701	478	0.42	1,182	0.56	2,274	1.39	186	4,120	2.44
AUG	101,678	296	0.22	1,622	0.63	1,993	1.01	347	4,258	1.95
SEP	95,131	162	0.12	1,592	0.64	1,687	0.85	466	3,906	1.73
OCT	89,218	98	0.07	1,449	0.59	1,182	0.58	508	3,236	1.39
NOV	76,331	36	0.03	1,171	0.57	724	0.39	406	2,336	1.12
DEC	61,551	59	0.06	994	0.58	548	0.35	351	1,953	1.14
TOT	917,522	1,512	0.12	16,193	0.67	11,457	0.60	3,709	32,871	1.49
AVG	76,460	126	0.11	1,349	0.69	955	0.55	309	2,739	1.45
JAN/05	133,974	136	0.06	2,138	0.51	888	0.25	770	3,932	0.97
FEB	123,273	593	0.23	1,892	0.46	651	0.19	580	3,716	1.00
MAR	106,215	61	0.04	1,376	0.37	642	0.21	519	2,598	0.73
APR	89,697	181	0.16	1,329	0.45	838	0.36	342	2,690	1.06
MAY	100,671	704	0.54	1,044	0.32	1,183	0.50	348	3,279	1.44
JUN	93,891	902	0.77	1,027	0.37	2,080	1.02	336	4,345	2.25
JUL	115,362	899	0.63	1,432	0.40	2,579	1.07	520	5,429	2.22
AUG	104,284	269	0.19	1,353	0.39	1,391	0.63	501	3,515	1.33
SEP	86,664	164	0.13	1,294	0.45	767	3.58	403	2,627	4.28
OCT	75,615	43	0.04	1,354	0.55	535	0.33	281	2,214	1.01
NOV	63,093	9	0.01	1,389	0.67	599	0.56	201	2,198	1.33
DEC	31,934	12	0.02	544	0.58	568	1.00	90	1,215	1.68
TOT	1,124,673	3,973	0.26	16,173	0.44	12,722	0.76	4,890	37,758	1.57
AVG	93,723	331	0.24	1,348	0.46	1,060	0.81	408	3,147	1.61

LONGLINE: NEW CALEDONIA

The statistics in Table 7, which cover New Caledonian longliners in the WCPFC Statistical Area (Figure 1), were determined from catch and effort data held at SPC on 30 June 2007; statistics for 2004–2006 have been raised to represent the total catch of target tuna species and effort. Figure 20 presents catch rates for albacore, bigeye and yellowfin. Figure 21 presents estimates of annual catches reported to SPC and WCPFC.

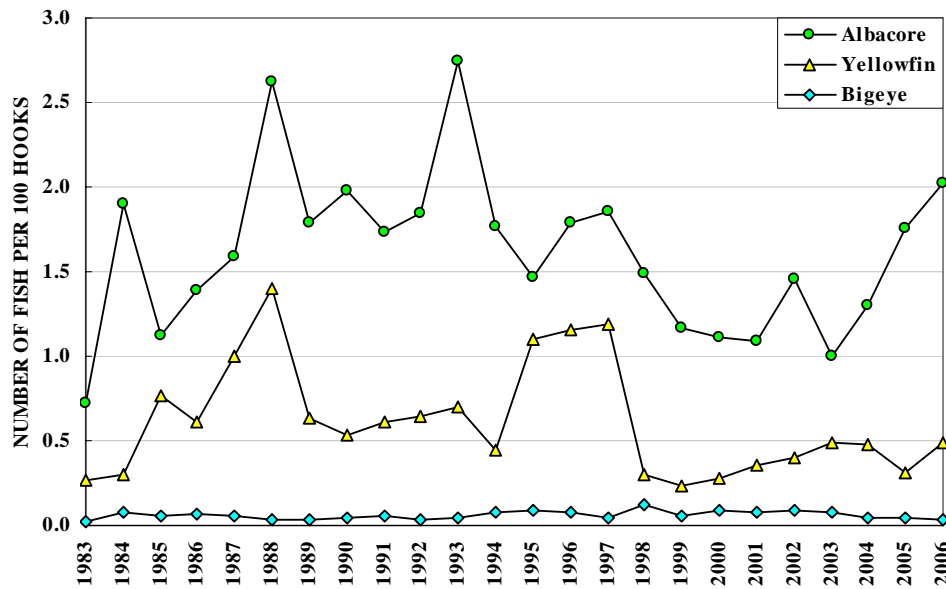


Figure 20. New Caledonian longliner catch rates

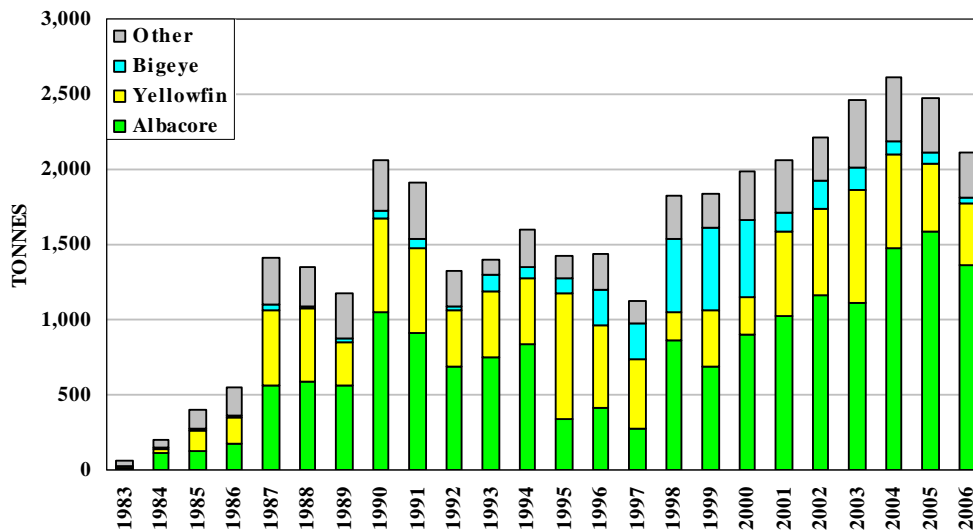


Figure 21. Catches by New Caledonian longliners

Table 7. Catch statistics for New Caledonian longliners. Units: Effort = hundreds of hooks; Catch = tonnes; CPUE = number of fish per 100 hooks.

MONTH	EFFORT	ALBACORE		BIGEYE		YELLOWFIN		OTHERS	TOTAL	
		CATCH	CPUE	CATCH	CPUE	CATCH	CPUE	CATCH	CATCH	CPUE
JAN/04	5,192	153	1.67	9	0.05	57	0.49	45	264	2.65
FEB	5,177	118	1.27	8	0.04	70	0.58	33	229	2.14
MAR	4,636	44	0.53	7	0.05	39	0.37	25	115	1.17
APR	5,717	70	0.68	19	0.10	49	0.38	30	167	1.34
MAY	5,207	44	0.48	12	0.06	48	0.43	41	145	1.23
JUN	4,952	140	1.55	14	0.09	40	0.36	38	233	2.27
JUL	5,901	181	1.69	9	0.05	62	0.48	30	282	2.39
AUG	5,889	197	1.96	6	0.03	104	0.81	29	337	2.98
SEP	4,858	85	1.08	6	0.03	33	0.28	30	155	1.65
OCT	5,564	115	1.15	3	0.01	65	0.50	39	221	1.90
NOV	4,655	124	1.47	4	0.03	56	0.51	46	230	2.34
DEC	3,836	155	2.22	2	0.01	42	0.46	43	242	3.08
TOT	61,584	1,426	1.30	98	0.05	665	0.48	431	2,620	2.09
AVG	5,132	119	1.31	8	0.05	55	0.47	36	218	2.09
JAN/05	4,359	77	0.95	5	0.04	52	0.44	31	166	1.76
FEB	4,843	79	0.83	6	0.04	67	0.50	29	181	1.63
MAR	4,414	29	0.34	9	0.06	94	0.80	19	150	1.38
APR	4,270	53	0.64	12	0.09	108	0.87	19	192	1.77
MAY	5,025	177	1.95	14	0.08	56	0.36	24	272	2.58
JUN	4,742	161	1.96	10	0.06	23	0.15	36	229	2.43
JUL	4,402	190	2.69	9	0.05	4	0.03	34	237	3.00
AUG	4,850	263	3.21	4	0.02	9	0.06	33	309	3.51
SEP	3,853	152	2.46	4	0.02	11	0.09	24	190	2.76
OCT	4,359	138	1.73	2	0.01	8	0.06	43	191	2.05
NOV	3,208	164	2.62	2	0.02	13	0.11	50	229	3.23
DEC	2,816	101	1.94	2	0.01	9	0.11	38	150	2.60
TOT	51,139	1,582	1.75	79	0.05	454	0.31	379	2,494	2.37
AVG	4,262	132	1.78	7	0.04	38	0.30	32	208	2.39
JAN/06	3,654	118	1.87	3	0.02	14	0.14	34	169	2.47
FEB	3,501	48	0.79	5	0.05	55	0.57	28	136	1.86
MAR	3,623	41	0.65	5	0.04	86	0.87	19	151	1.83
APR	4,028	44	0.62	5	0.04	126	1.19	30	205	2.17
MAY	3,482	131	2.21	5	0.05	56	0.61	31	223	3.20
JUN	2,976	108	2.12	4	0.04	27	0.34	26	165	2.78
JUL	2,780	171	3.51	2	0.02	34	0.44	22	228	4.23
AUG	3,233	174	3.18	2	0.02	27	0.33	24	228	3.75
SEP	2,768	128	2.69	1	0.01	27	0.35	19	175	3.31
OCT	3,321	115	2.02	3	0.03	15	0.17	36	169	2.62
NOV	2,859	155	3.24	4	0.05	17	0.22	37	213	4.08
DEC	791	51	3.81	0	0.02	2	0.08	9	62	4.49
TOT	37,016	1,283	2.02	39	0.04	486	0.49	315	2,123	2.90
AVG	3,085	107	2.23	3	0.03	40	0.44	26	177	3.07

LONGLINE: PAPUA NEW GUINEA

The statistics in Table 8, which cover Papua New Guinea longliners in the WCPFC Statistical Area (Figure 1), were determined from catch and effort data held at SPC on 30 June 2007; statistics for 2004–2005, but not 2006, have been raised to represent the total catch of target tuna species and effort. Figure 22 presents catch rates for albacore, bigeye and yellowfin. Figure 23 presents estimates of annual catches reported to SPC and WCPFC; estimates for 1998–2006 include shark longliners.

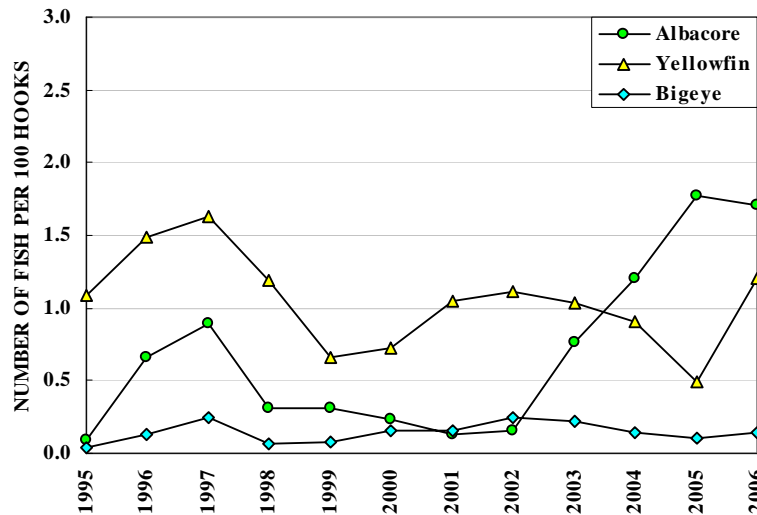


Figure 22. Papua New Guinea longliner catch rates

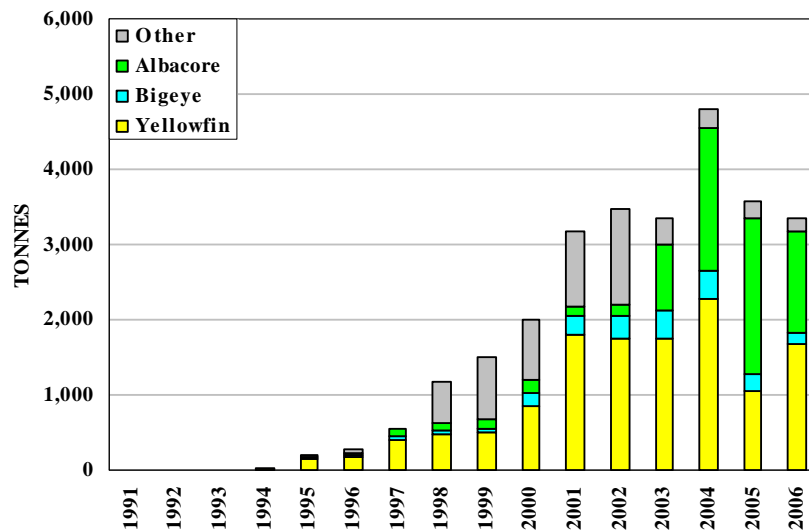


Figure 23. Catches by Papua New Guinea longliners

Table 8. Catch statistics for Papua New Guinea longliners. Units: Effort = hundreds of hooks; Catch = tonnes; CPUE = number of fish per 100 hooks.

MONTH	EFFORT	ALBACORE		BIGEYE		YELLOWFIN		OTHERS	TOTAL	
		CATCH	CPUE	CATCH	CPUE	CATCH	CPUE	CATCH	CATCH	CPUE
JAN/05	7,636	132	1.10	27	0.12	149	0.73	28	336	2.06
FEB	5,615	94	1.02	26	0.15	105	0.67	24	249	1.99
MAR	7,384	103	0.87	33	0.15	100	0.49	21	256	1.60
APR	6,829	205	1.84	24	0.12	83	0.45	19	330	2.51
MAY	7,011	291	2.48	21	0.10	122	0.63	16	451	3.31
JUN	3,545	150	2.80	7	0.08	55	0.54	7	219	3.48
JUL	5,903	281	3.30	13	0.08	70	0.41	8	372	3.83
AUG	5,708	178	2.12	11	0.07	60	0.34	8	257	2.58
SEP	6,776	189	1.86	11	0.06	71	0.35	14	285	2.34
OCT	6,778	188	1.78	11	0.06	82	0.39	19	300	2.31
NOV	6,768	216	2.09	14	0.07	71	0.38	21	323	2.64
DEC	6,438	63	0.66	15	0.10	98	0.57	39	215	1.66
TOT	76,389	2,088	1.77	213	0.10	1,067	0.50	223	3,592	2.47
AVG	6,366	174	1.83	18	0.10	89	0.50	19	299	2.53
JAN/06	5,644	47	0.57	11	0.08	129	0.88	45	231	2.02
FEB	4,346	38	0.50	9	0.08	120	1.20	35	201	2.25
MAR	5,872	307	3.58	6	0.05	154	1.21	25	491	5.02
APR	6,247	217	2.42	10	0.10	180	1.44	24	431	4.17
MAY	4,700	150	2.24	9	0.10	178	1.80	17	355	4.32
JUN	6,055	208	2.44	29	0.30	172	1.30	13	421	4.15
JUL	6,811	266	2.71	21	0.18	217	1.44	18	521	4.48
AUG	6,518	214	2.33	20	0.16	143	0.96	17	395	3.59
SEP	4,979	83	1.17	17	0.15	97	0.76	17	214	2.21
OCT	5,134	38	0.51	27	0.24	173	1.17	21	258	2.12
NOV	5,412	59	0.75	13	0.10	174	1.09	18	264	2.09
DEC	6,133	37	0.41	13	0.09	210	1.14	19	279	1.78
TOT	67,850	1,663	1.70	184	0.14	1,946	1.20	269	4,063	3.24
AVG	5,654	139	1.64	15	0.14	162	1.20	22	339	3.18
JAN/07	3,820	88	1.54	5	0.05	83	0.66	14	190	2.38
FEB	347	14	2.48	1	0.09	7	0.58	2	23	3.37
MAR
APR
MAY
JUN
JUL
AUG
SEP
OCT
NOV
DEC
TOT	4,168	102	1.62	6	0.06	90	0.65	16	213	2.46
AVG	2,084	51	2.01	3	0.07	45	0.62	8	107	2.88

LONGLINE: SAMOA

The statistics in Table 9, which cover Samoan longliners in the WCPFC Statistical Area (Figure 1), were determined from catch and effort data held at SPC on 30 June 2007; statistics for 2004–2005, but not 2006, have been raised to represent the total catch of target tuna species and effort. Figure 24 presents catch rates for albacore, bigeye and yellowfin. Figure 25 presents estimates of annual catches reported to SPC and WCPFC.

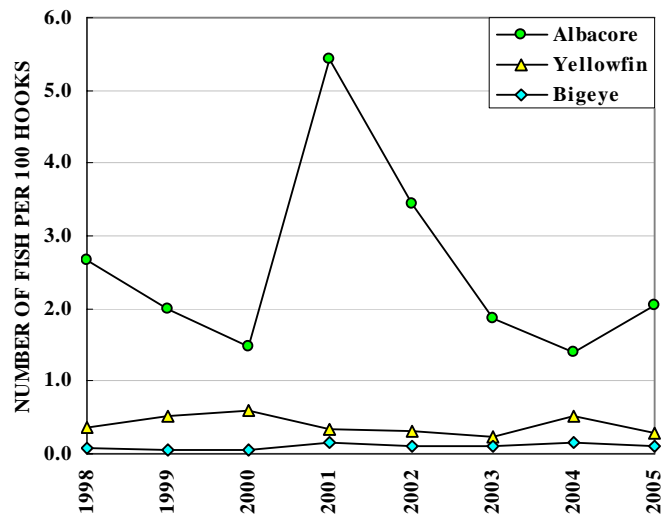


Figure 24. Samoan longliner catch rates

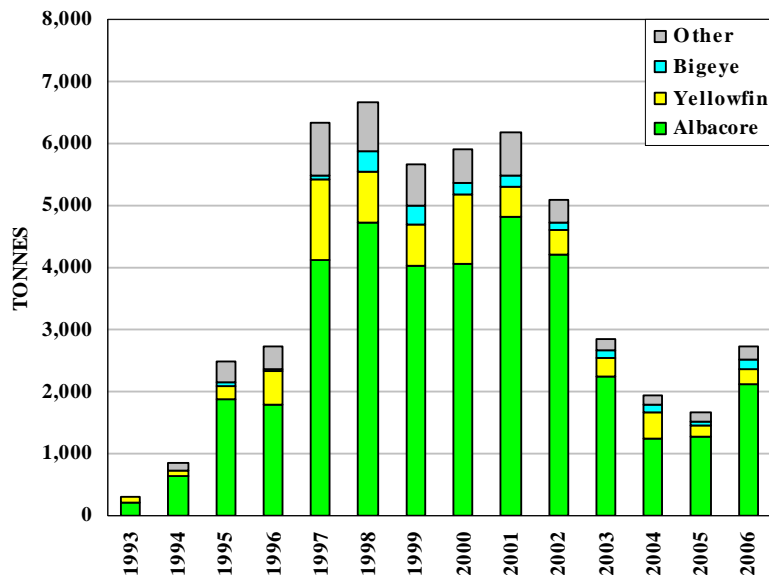


Figure 25. Catches by Samoan longliners

Table 9. Catch statistics for Samoan longliners. Units: Effort = hundreds of hooks; Catch = tonnes; CPUE = number of fish per 100 hooks.

MONTH	EFFORT	ALBACORE		BIGEYE		YELLOWFIN		OTHERS	TOTAL	
		CATCH	CPUE	CATCH	CPUE	CATCH	CPUE	CATCH	CATCH	CPUE
JAN/04	4,328	59	0.88	8	0.12	25	0.33	43	135	1.76
FEB	3,367	43	0.83	10	0.18	14	0.24	21	88	1.50
MAR	4,634	98	1.37	24	0.32	23	0.28	40	185	2.45
APR	4,451	79	1.15	8	0.11	40	0.50	19	145	1.97
MAY	3,525	76	1.40	11	0.20	57	0.91	28	171	2.89
JUN	4,403	162	2.40	13	0.19	45	0.57	28	249	3.54
JUL	4,382	147	2.19	10	0.14	98	1.26	49	304	4.32
AUG	3,708	90	1.58	6	0.10	83	1.27	46	226	3.74
SEP	4,350	83	1.25	10	0.14	47	0.61	76	216	2.57
OCT	5,191	105	1.32	9	0.10	20	0.22	52	186	2.00
NOV	5,944	118	1.29	7	0.07	15	0.14	54	194	1.92
DEC	5,706	108	1.24	10	0.11	19	0.19	75	212	2.10
TOT	53,989	1,169	1.41	125	0.14	486	0.51	531	2,312	2.52
AVG	4,499	97	1.41	10	0.15	40	0.54	44	193	2.56
JAN/05	3,817	72	1.24	9	0.12	8	0.10	46	135	1.98
FEB	1,870	41	1.43	4	0.10	7	0.16	18	69	2.10
MAR	4,260	65	0.99	3	0.04	10	0.11	43	121	1.50
APR	3,193	59	1.21	4	0.06	9	0.13	25	97	1.70
MAY	1,357	38	1.85	3	0.11	9	0.29	6	56	2.52
JUN	4,139	236	3.72	8	0.10	81	0.89	42	367	5.19
JUL	1,157	31	1.77	1	0.03	5	0.21	21	59	2.53
AUG	2,786	85	2.00	2	0.03	22	0.37	10	119	2.56
SEP	4,463	121	1.78	9	0.11	23	0.28	75	229	2.86
OCT	5,198	220	2.77	11	0.11	22	0.22	41	295	3.42
NOV	5,666	228	2.63	13	0.12	23	0.21	59	322	3.43
DEC	1,291	29	1.47	4	0.17	11	0.44	10	54	2.38
TOT	39,195	1,227	2.05	70	0.09	230	0.28	396	1,923	2.84
AVG	3,266	102	1.91	6	0.09	19	0.29	33	160	2.68
JAN/06	665	17	1.63	2	0.14	7	0.58	5	31	2.66
FEB	715	15	1.38	1	0.09	9	0.67	5	30	2.44
MAR
APR
MAY
JUN
JUL
AUG
SEP
OCT
NOV
DEC
TOT	1,380	32	1.50	3	0.11	15	0.63	10	61	2.55
AVG	690	16	1.50	2	0.12	8	0.63	5	31	2.55

LONGLINE: CHINESE TAIPEI DISTANT-WATER FLEET

The statistics in Table 10, which cover distant-water Chinese Taipei longliners in the WCPFC Statistical Area (Figure 1), were determined from catch and effort data held at SPC on 30 June 2007. Figure 26 presents catch rates for albacore, bigeye and yellowfin. Figure 27 presents estimates of annual catches reported to SPC and WCPFC.

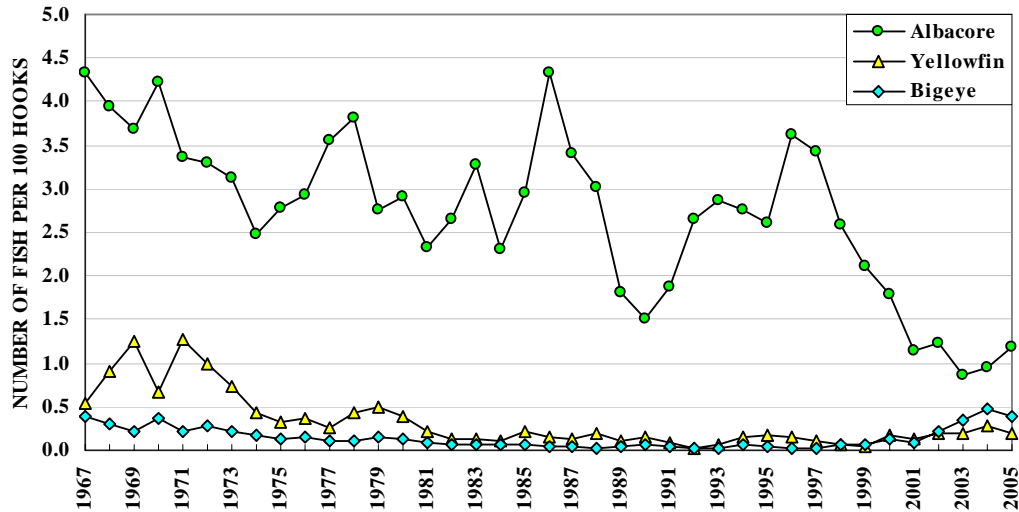


Figure 26. Chinese Taipei distant-water longliner catch rates

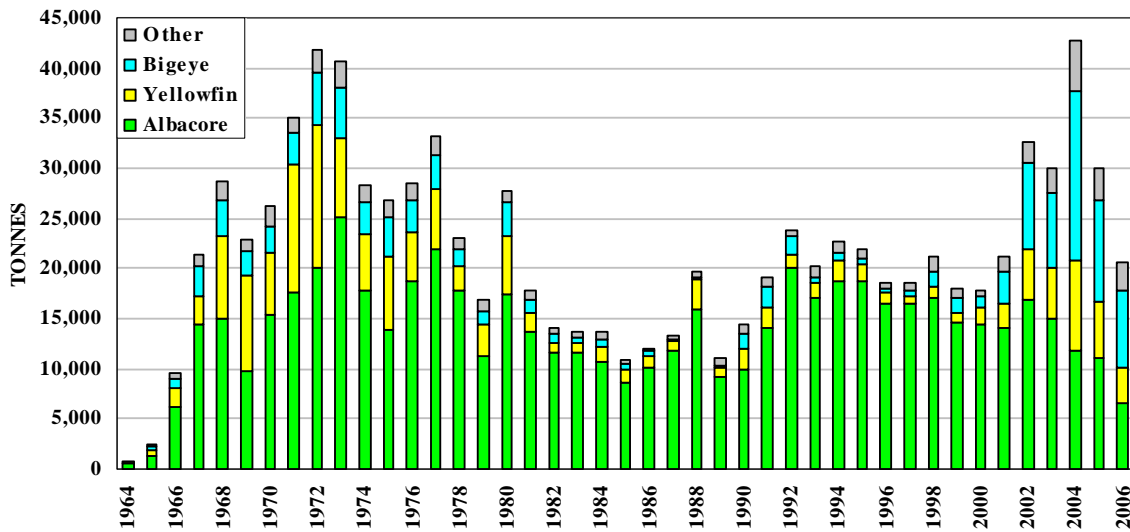


Figure 27. Catches by Chinese Taipei distant-water longliners

Table 10. Catch statistics for Chinese Taipei distant-water longliners. Units: Effort = hundreds of hooks; Catch = tonnes; CPUE = number of fish per 100 hooks.

MONTH	EFFORT	ALBACORE		BIGEYE		YELLOWFIN		OTHERS	TOTAL	
		CATCH	CPUE	CATCH	CPUE	CATCH	CPUE	CATCH	CATCH	CPUE
JAN/03	73,622	699	0.70	1,520	0.55	956	0.37	836	4,012	1.85
FEB	76,253	557	0.46	1,265	0.45	763	0.30	723	3,309	1.41
MAR	68,779	527	0.62	1,281	0.47	444	0.19	567	2,820	1.45
APR	61,373	435	0.48	850	0.35	370	0.16	434	2,089	1.15
MAY	98,382	1,377	0.92	898	0.25	676	0.22	619	3,571	1.54
JUN	104,878	1,657	1.06	902	0.24	637	0.21	579	3,775	1.63
JUL	114,596	1,803	1.06	1,136	0.29	550	0.16	603	4,091	1.63
AUG	97,458	1,444	1.12	1,018	0.27	500	0.17	609	3,571	1.70
SEP	67,478	739	0.75	886	0.33	354	0.18	517	2,496	1.39
OCT	48,396	751	1.01	612	0.33	245	0.16	296	1,904	1.61
NOV	38,548	526	1.11	561	0.33	135	0.11	244	1,465	1.68
DEC	39,404	474	0.93	692	0.41	139	0.12	297	1,601	1.59
TOT	889,165	10,989	0.87	11,619	0.34	5,769	0.20	6,326	34,703	1.56
AVG	74,097	916	0.85	968	0.35	481	0.20	527	2,892	1.55
JAN/04	87,299	967	0.85	992	0.29	192	0.07	552	2,704	1.31
FEB	78,849	669	0.63	1,035	0.31	193	0.08	651	2,548	1.17
MAR	62,204	569	0.71	1,246	0.50	243	0.13	555	2,613	1.49
APR	65,329	637	0.92	1,192	0.46	257	0.13	473	2,559	1.67
MAY	100,251	1,382	1.28	1,546	0.40	305	0.10	841	4,074	2.04
JUN	131,723	1,794	1.10	2,115	0.48	1,069	0.30	966	5,945	2.10
JUL	152,102	2,196	1.12	2,388	0.51	1,992	0.48	975	7,551	2.30
AUG	140,510	2,097	1.10	2,166	0.52	1,921	0.51	993	7,177	2.36
SEP	94,061	972	0.82	1,807	0.63	1,147	0.43	798	4,724	2.08
OCT	84,877	663	0.54	1,521	0.56	840	0.34	654	3,679	1.62
NOV	79,754	885	0.81	1,214	0.45	562	0.24	743	3,403	1.76
DEC	84,740	970	0.93	1,476	0.53	644	0.25	1,039	4,129	2.02
TOT	1,161,698	13,802	0.94	18,697	0.48	9,366	0.29	9,241	51,106	1.91
AVG	96,808	1,150	0.90	1,558	0.47	780	0.25	770	4,259	1.83
JAN/05	77,846	685	0.62	1,382	0.55	416	0.18	969	3,451	1.71
FEB	73,524	967	0.91	1,049	0.43	380	0.17	872	3,268	1.85
MAR	36,180	213	0.46	515	0.39	223	0.17	423	1,374	1.37
APR	35,913	340	1.06	519	0.40	237	0.19	290	1,386	1.86
MAY	63,472	1,084	1.75	658	0.32	345	0.16	552	2,639	2.49
JUN	71,750	1,519	1.87	612	0.27	515	0.23	761	3,407	2.80
JUL	85,749	1,582	1.68	1,119	0.40	639	0.24	830	4,169	2.67
AUG	76,401	1,149	1.44	1,017	0.38	475	0.23	797	3,436	2.43
SEP	54,241	534	0.93	835	0.41	251	0.15	558	2,177	1.87
OCT	48,445	488	0.65	882	0.48	239	0.18	466	2,076	1.70
NOV	78,139	1,283	1.24	883	0.30	349	0.15	791	3,306	2.11
DEC	86,850	1,099	0.98	1,203	0.35	530	0.21	873	3,705	1.92
TOT	788,511	10,942	1.18	10,673	0.39	4,599	0.19	8,181	34,394	2.12
AVG	65,709	912	1.13	889	0.39	383	0.19	682	2,866	2.06

POLE-AND-LINE: JAPAN

The statistics in Table 11, which cover Japanese offshore and distant-water pole-and-line vessels in the WCPFC Statistical Area (Figure 1), were determined from catch and effort data held at SPC on 30 June 2007. Figure 28 presents catch rates for skipjack, albacore and yellowfin. Figure 29 presents estimates of annual catches reported to SPC and WCPFC.

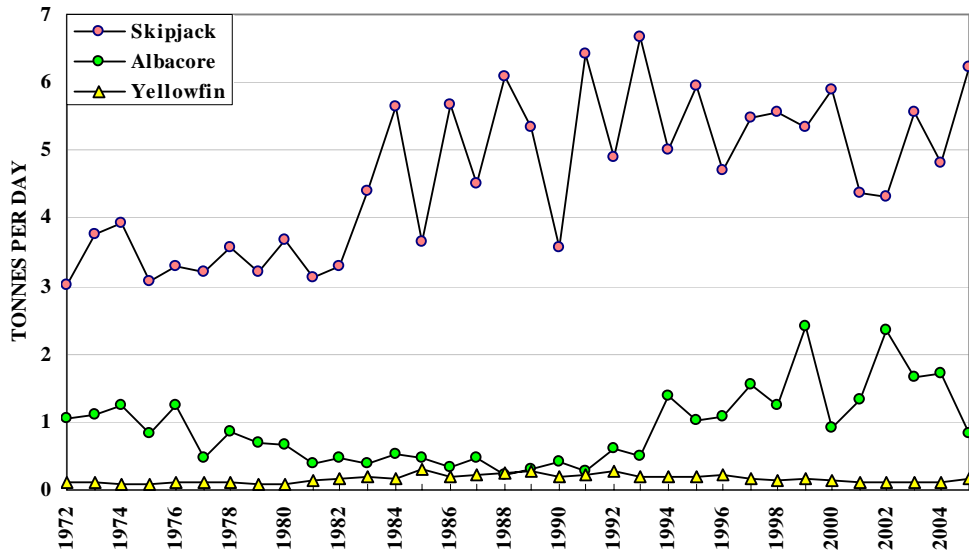


Figure 28. Japanese pole-and-line catch rates

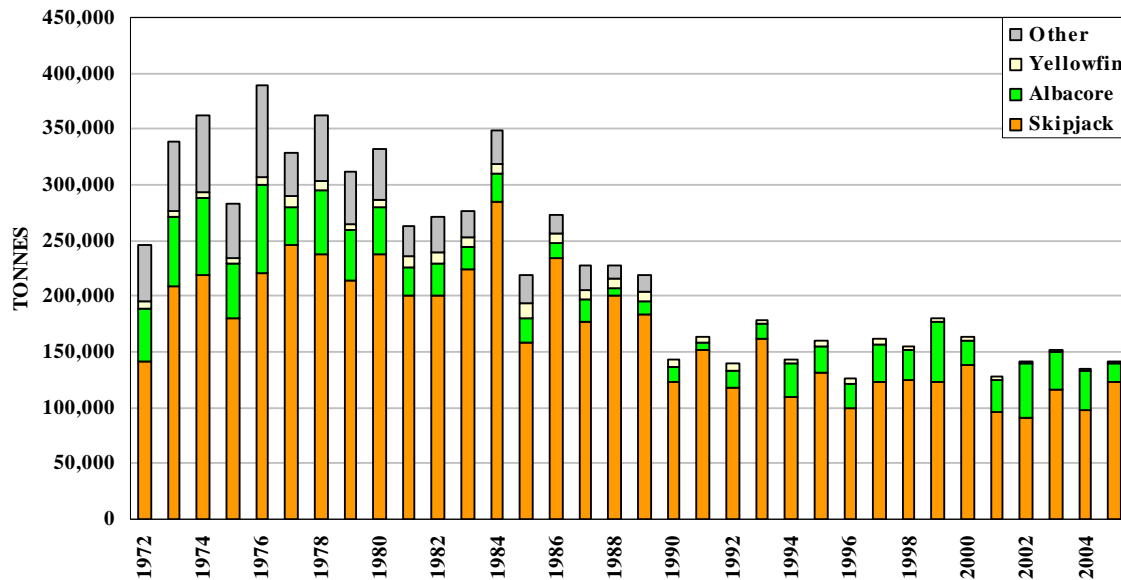


Figure 29. Catches by Japanese offshore and distant-water pole-and-line vessels

Table 11. Catch statistics for Japanese pole-and-line vessels. Units: Effort = days fished or searched; Catch = tonnes; CPUE = tonnes per day fished or searched.

MONTH	EFFORT	SKIPJACK		ALBACORE		YELLOWFIN		OTHERS	TOTAL	
		CATCH	CPUE	CATCH	CPUE	CATCH	CPUE	CATCH	CATCH	CPUE
JAN/03	429	3,920	9.14	6	0.01	74	0.17	8	4,009	9.34
FEB	1,316	10,082	7.66	2	0.00	281	0.21	31	10,396	7.90
MAR	1,676	14,521	8.66	7	0.00	191	0.11	29	14,747	8.80
APR	2,076	13,283	6.40	394	0.19	271	0.13	178	14,127	6.81
MAY	2,367	15,458	6.53	67	0.03	355	0.15	180	16,060	6.79
JUN	2,016	12,778	6.34	4,848	2.40	288	0.14	186	18,100	8.98
JUL	2,149	10,785	5.02	6,331	2.95	164	0.08	142	17,423	8.11
AUG	2,033	10,497	5.16	2,269	1.12	59	0.03	16	12,841	6.32
SEP	2,022	11,640	5.76	1,387	0.69	87	0.04	25	13,139	6.50
OCT	2,014	6,279	3.12	6,676	3.31	122	0.06	10	13,087	6.50
NOV	1,662	2,945	1.77	3,590	2.16	93	0.06	15	6,643	4.00
DEC	904	3,068	3.39	4	0.00	104	0.12	24	3,200	3.54
TOT	20,664	115,257	5.58	25,580	1.24	2,089	0.10	845	143,771	6.96
AVG	1,722	9,605	5.75	2,132	1.07	174	0.11	70	11,981	6.97
JAN/04	603	4,915	8.15	104	0.17	109	0.18	14	5,143	8.53
FEB	910	3,696	4.06	1	0.00	220	0.24	24	3,941	4.33
MAR	1,912	5,929	3.10	2,348	1.23	427	0.22	151	8,855	4.63
APR	2,132	7,544	3.54	3,908	1.83	360	0.17	817	12,628	5.92
MAY	2,433	4,421	1.82	8,947	3.68	218	0.09	376	13,962	5.74
JUN	2,073	6,904	3.33	5,211	2.51	211	0.10	1,184	13,510	6.52
JUL	2,101	9,701	4.62	2,270	1.08	165	0.08	767	12,902	6.14
AUG	1,880	18,147	9.65	40	0.02	82	0.04	206	18,474	9.83
SEP	2,139	16,268	7.61	18	0.01	90	0.04	125	16,502	7.71
OCT	1,969	8,754	4.45	12	0.01	145	0.07	11	8,922	4.53
NOV	1,656	6,992	4.22	14	0.01	167	0.10	24	7,197	4.35
DEC	612	4,867	7.95	14	0.02	91	0.15	10	4,982	8.14
TOT	20,420	98,138	4.81	22,886	1.12	2,285	0.11	3,709	127,018	6.22
AVG	1,702	8,178	5.21	1,907	0.88	190	0.12	309	10,585	6.36
JAN/05	760	6,715	8.84	9	0.01	92	0.12	7	6,824	8.98
FEB	1,173	4,179	3.56	2	0.00	469	0.40	72	4,722	4.03
MAR	1,888	8,633	4.57	94	0.05	486	0.26	225	9,438	5.00
APR	2,068	10,418	5.04	251	0.12	753	0.36	199	11,621	5.62
MAY	2,173	12,431	5.72	1,875	0.86	423	0.19	630	15,359	7.07
JUN	2,319	13,415	5.78	2,958	1.28	183	0.08	236	16,792	7.24
JUL	2,212	15,012	6.79	4,667	2.11	104	0.05	308	20,090	9.08
AUG	1,578	15,901	10.08	2,689	1.70	54	0.03	100	18,744	11.88
SEP	1,967	18,308	9.31	1,538	0.78	114	0.06	16	19,976	10.16
OCT	1,967	11,033	5.61	364	0.19	237	0.12	21	11,654	5.92
NOV	1,317	5,031	3.82	730	0.55	124	0.09	19	5,904	4.48
DEC	287	1,845	6.43	0	0.00	54	0.19	13	1,913	6.66
TOT	19,709	122,920	6.24	15,178	0.77	3,093	0.16	1,844	143,035	7.26
AVG	1,642	10,243	6.30	1,265	0.64	258	0.16	154	11,920	7.18

POLE AND LINE: SOLOMON ISLANDS

The statistics in Table 12, which cover the Solomon Islands pole-and-line fleet in the WCPFC Statistical Area (Figure 1), were determined from catch and effort data held at SPC on 30 June 2007. Figure 30 presents catch rates for skipjack and yellowfin. Figure 31 presents estimates of annual catches reported to SPC and WCPFC.

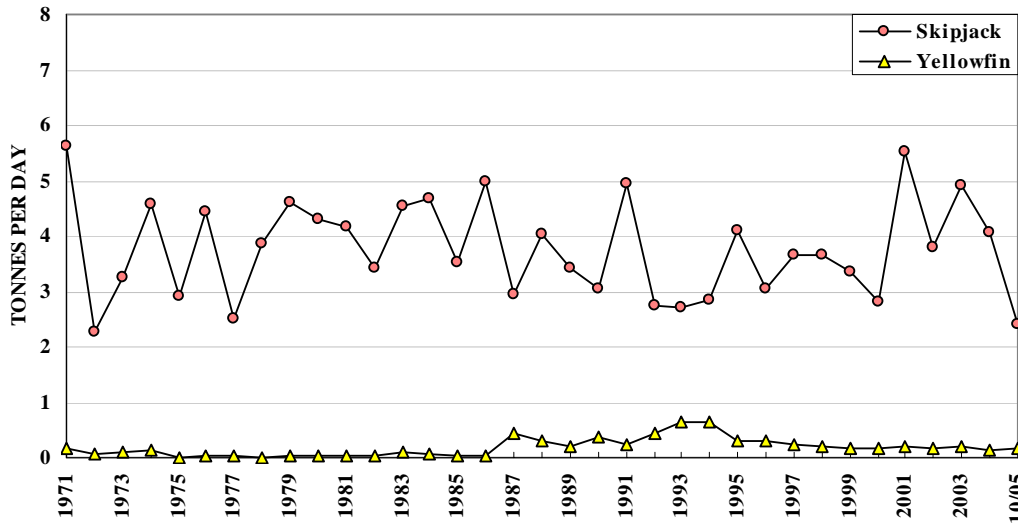


Figure 30. Solomon Islands pole-and-line catch rates

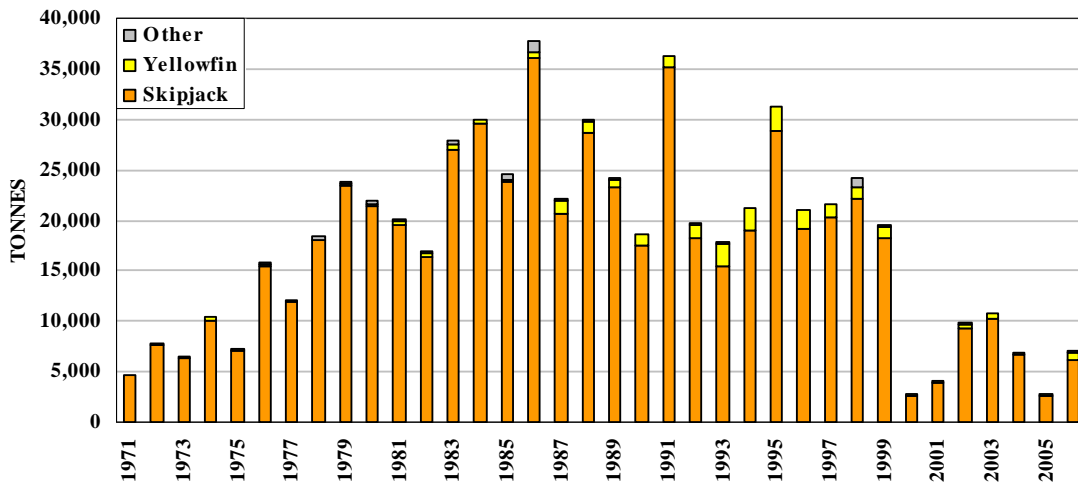


Figure 31. Catches by Solomon Islands pole-and-line vessels

Table 12. Catch statistics for Solomon Islands pole-and-line vessels. Units: Effort = days fished or searched; Catch = tonnes; CPUE = tonnes per day fished or searched.

MONTH	EFFORT	SKIPJACK			YELLOWFIN			OTHERS	TOTAL	
		CATCH	CPUE	%	CATCH	CPUE	%	CATCH	CATCH	CPUE
JAN/03	188	1,521	8.09	95	77	0.41	5	0	1,598	8.50
FEB	184	1,389	7.55	96	61	0.33	4	0	1,450	7.88
MAR	167	927	5.55	94	58	0.35	6	0	985	5.90
APR	176	889	5.05	97	24	0.13	3	3	915	5.20
MAY	209	1,219	5.83	97	30	0.14	2	5	1,254	6.00
JUN	164	1,085	6.61	97	30	0.18	3	2	1,117	6.81
JUL	168	804	4.78	96	33	0.20	4	3	839	5.00
AUG	182	623	3.42	95	31	0.17	5	1	656	3.60
SEP	191	675	3.53	94	46	0.24	6	0	721	3.77
OCT	189	452	2.39	94	29	0.15	6	0	481	2.55
NOV	189	644	3.41	98	13	0.07	2	0	657	3.48
DEC	96	122	1.27	91	12	0.13	9	0	135	1.40
TOT	2,103	10,350	4.92	96	444	0.21	4	14	10,809	5.14
AVG	175	863	4.79	96	37	0.21	4	1	901	5.01
JAN/04	87	441	5.07	88	18	0.21	4	41	500	5.75
FEB	91	166	1.83	68	16	0.17	6	62	244	2.68
MAR	78	223	2.86	78	9	0.11	3	55	287	3.68
APR	163	233	1.43	61	51	0.31	13	100	384	2.36
MAY	0	0	0.00	0	0	0.00	0	0	0	0.00
JUN	116	510	4.39	91	22	0.19	4	27	559	4.82
JUL	168	858	5.11	98	11	0.07	1	10	879	5.23
AUG	233	1,000	4.29	98	8	0.03	1	11	1,019	4.38
SEP	253	1,325	5.24	98	28	0.11	2	2	1,355	5.36
OCT	217	965	4.45	96	44	0.20	4	0	1,009	4.65
NOV	166	675	4.06	96	31	0.19	4	0	706	4.25
DEC	64	238	3.72	96	8	0.13	3	1	248	3.87
TOT	1,636	6,635	4.06	92	246	0.15	3	309	7,190	4.40
AVG	149	603	3.86	92	22	0.16	3	28	654	4.28
JAN/05	50	149	2.97	98	3	0.06	2	0	152	3.03
FEB	61	176	2.88	92	16	0.26	8	0	192	3.14
MAR	85	188	2.22	86	30	0.35	14	0	218	2.57
APR	115	173	1.50	89	22	0.19	11	0	195	1.69
MAY	131	346	2.64	93	27	0.20	7	0	373	2.85
JUN	160	337	2.11	91	32	0.20	9	0	370	2.31
JUL	138	312	2.26	91	30	0.22	9	0	342	2.48
AUG	165	437	2.65	98	9	0.06	2	0	446	2.70
SEP	103	256	2.49	97	9	0.08	3	0	265	2.57
OCT	90	283	3.15	97	7	0.08	3	0	290	3.23
NOV
DEC
TOT	1,098	2,658	2.42	93	185	0.17	7	0	2,843	2.59
AVG	110	266	2.49	93	19	0.17	7	0	284	2.66

PURSE SEINE: FEDERATED STATES OF MICRONESIA

The statistics in Table 13, which cover the Federated States of Micronesia purse seiners in the WCPFC Statistical Area (Figure 1), were determined from catch and effort data held at SPC on 30 June 2007; statistics for 2006, but not 2004–2005, have been raised to represent the total catch of target tuna species and effort. Figure 32 presents catch rates for skipjack, yellowfin and bigeye. Figure 33 presents estimates of annual catches reported to SPC and WCPFC; estimates for 1993–2005 were determined from unraised logsheet data of unknown coverage.

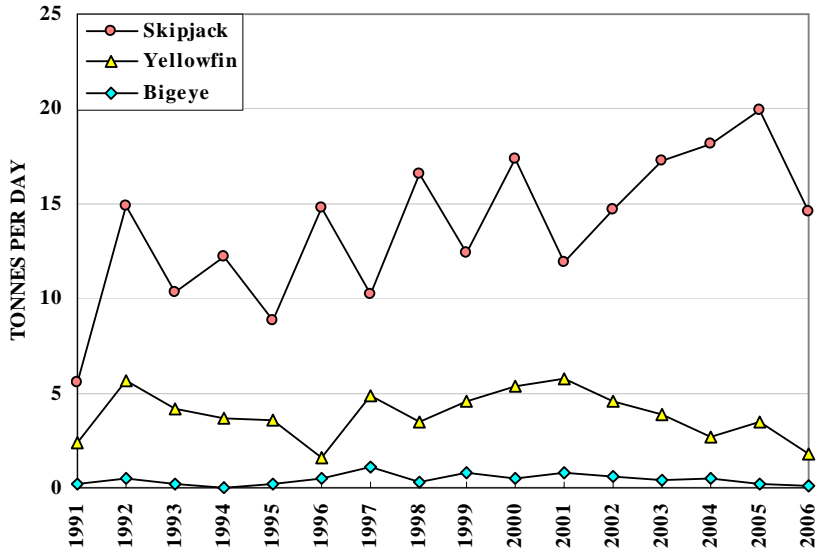


Figure 32. Federated States of Micronesia purse seiner catch rates

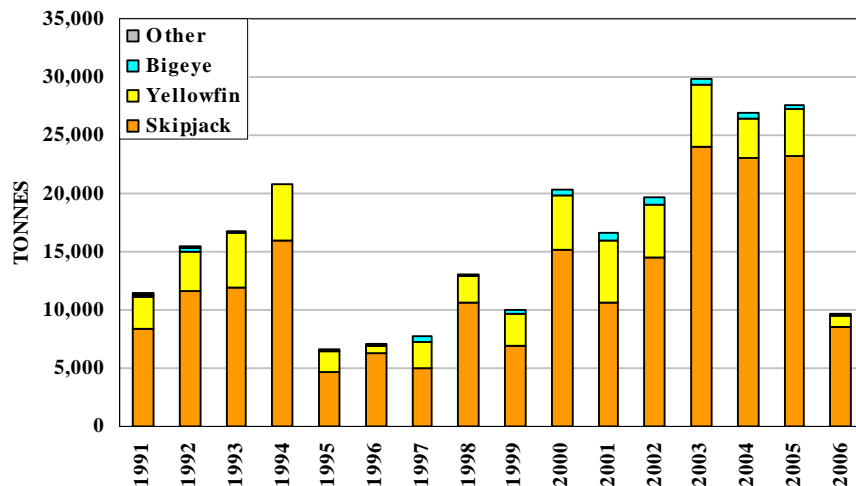


Figure 33. Catches by Federated States of Micronesia purse seiners

Table 13. Catch statistics for Federated States of Micronesia purse seiners. Units: Effort = days fished or searched; Catch = tonnes; CPUE = tonnes per day fished or searched.

MONTH	EFFORT	SKIPJACK			YELLOWFIN			BIGEYE			TOTAL	
		CATCH	CPUE	%	CATCH	CPUE	%	CATCH	CPUE	%	CATCH	CPUE
JAN/04	102	1,234	12.09	83	214	2.10	14	34	0.34	2	1,482	14.53
FEB	113	1,936	17.13	76	546	4.83	22	50	0.44	2	2,532	22.41
MAR	96	2,103	21.90	84	354	3.69	14	47	0.49	2	2,504	26.08
APR	120	1,698	14.15	86	222	1.85	11	66	0.55	3	1,985	16.54
MAY	148	2,989	20.19	93	182	1.23	6	48	0.33	2	3,219	21.75
JUN	85	625	7.35	84	100	1.18	13	23	0.27	3	748	8.80
JUL	98	1,272	12.98	68	513	5.23	28	76	0.77	4	1,860	18.98
AUG	97	1,871	19.29	88	214	2.21	10	31	0.32	1	2,116	21.81
SEP	125	3,452	27.61	89	347	2.77	9	78	0.62	2	3,877	31.01
OCT	84	2,622	31.22	93	164	1.96	6	34	0.40	1	2,821	33.58
NOV	87	1,685	19.36	89	165	1.90	9	41	0.48	2	1,891	21.74
DEC	110	1,515	13.77	79	367	3.34	19	44	0.40	2	1,926	17.51
TOT	1,265	22,999	18.18	85	3,388	2.68	13	571	0.45	2	26,959	21.31
AVG	105	1,917	18.09	85	282	2.69	13	48	0.45	2	2,247	21.23
JAN/05	118	2,280	19.32	88	287	2.43	11	20	0.17	1	2,587	21.93
FEB	94	1,938	20.62	93	129	1.37	6	11	0.11	1	2,078	22.10
MAR	124	3,224	26.00	85	527	4.25	14	41	0.33	1	3,792	30.58
APR	136	2,743	20.17	79	664	4.88	19	56	0.41	2	3,463	25.46
MAY	110	2,053	18.66	85	335	3.05	14	28	0.26	1	2,416	21.96
JUN	94	2,043	21.73	91	195	2.07	9	4	0.04	0	2,242	23.85
JUL	100	2,266	22.66	91	206	2.06	8	12	0.12	0	2,484	24.84
AUG	112	1,025	9.15	58	687	6.13	39	56	0.50	3	1,768	15.79
SEP	93	1,069	11.50	71	393	4.22	26	38	0.40	3	1,500	16.13
OCT	64	2,215	34.61	97	70	1.10	3	5	0.07	0	2,290	35.78
NOV	57	1,206	21.17	74	413	7.25	25	5	0.08	0	1,624	28.50
DEC	62	1,098	17.71	87	156	2.51	12	6	0.10	0	1,260	20.32
TOT	1,164	23,161	19.90	84	4,062	3.49	15	282	0.24	1	27,504	23.63
AVG	97	1,930	20.28	84	339	3.44	15	23	0.22	1	2,292	23.94
JAN/06	90	585	6.50	69	239	2.65	28	20	0.23	2	844	9.37
FEB	51	501	9.88	95	25	0.49	5	1	0.01	0	526	10.38
MAR	70	1,876	26.89	91	191	2.73	9	6	0.08	0	2,073	29.71
APR	55	951	17.43	91	93	1.71	9	2	0.04	0	1,046	19.18
MAY	68	913	13.33	98	19	0.27	2	0	0.01	0	932	13.61
JUN	65	1,050	16.22	88	138	2.14	12	4	0.05	0	1,192	18.42
JUL	58	1,204	20.64	94	80	1.37	6	2	0.04	0	1,287	22.05
AUG	28	805	28.83	96	31	1.10	4	1	0.03	0	837	29.97
SEP	24	51	2.10	62	31	1.28	37	1	0.03	1	82	3.42
OCT	0	0	0.00	0	0	0.00	0	0	0.00	0	0	0.00
NOV	4	6	1.66	50	6	1.62	49	0	0.04	1	13	3.33
DEC	72	602	8.33	75	199	2.75	25	6	0.08	1	806	11.15
TOT	585	8,545	14.61	89	1,051	1.80	11	42	0.07	0	9,638	16.48
AVG	53	777	13.80	89	96	1.65	11	4	0.06	0	876	15.51

PURSE SEINE: JAPAN

The statistics in Table 14, which cover the Japanese purse seiners in the WCPFC Statistical Area (Figure 1), were determined from catch and effort data held at SPC on 30 June 2007. Figure 34 presents catch rates for skipjack, yellowfin and bigeye. Figure 35 presents estimates of annual catches reported to WCPFC.

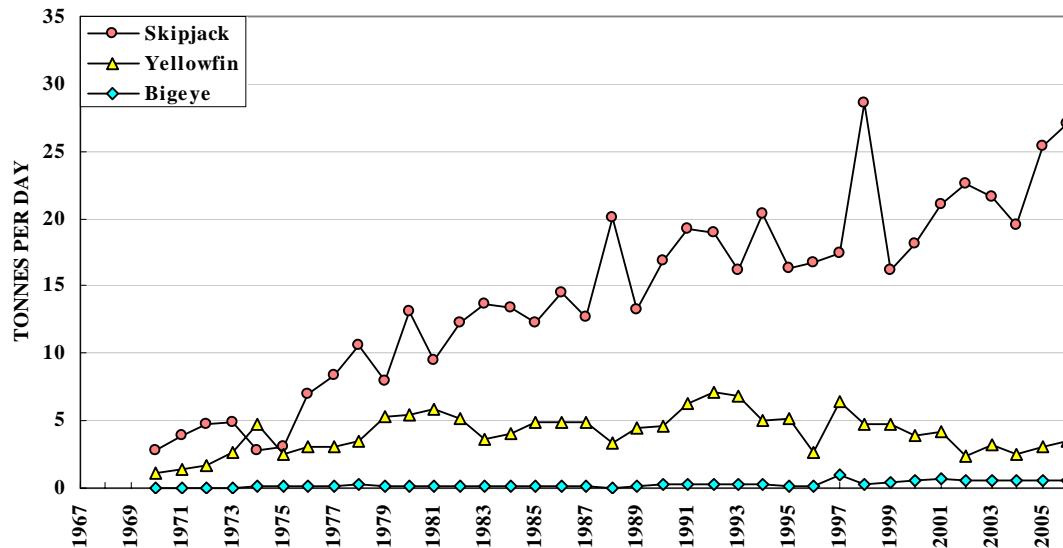


Figure 34. Japanese purse seiner catch rates

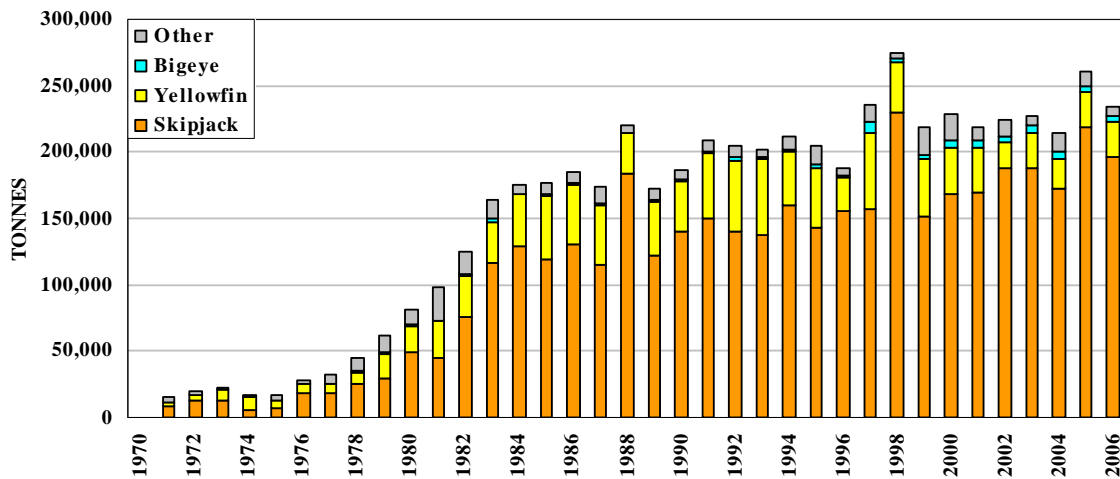


Figure 35. Catches by Japanese purse seiners

Table 14. Catch statistics for Japanese purse seiners. Units: Effort = days fished or searched; Catch = tonnes; CPUE = tonnes per day fished or searched.

MONTH	EFFORT	SKIPJACK			YELLOWFIN			BIGEYE			TOTAL	
		CATCH	CPUE	%	CATCH	CPUE	%	CATCH	CPUE	%	CATCH	CPUE
JAN/04	603	13,626	22.60	86	1,788	2.97	11	319	0.53	2	15,766	26.15
FEB	507	13,264	26.16	89	1,492	2.94	10	225	0.44	2	14,982	29.55
MAR	486	15,041	30.95	90	1,398	2.88	8	248	0.51	1	16,691	34.34
APR	800	17,962	22.45	78	4,277	5.35	18	581	0.73	3	23,150	28.94
MAY	949	16,996	17.91	72	1,840	1.94	8	423	0.45	2	23,601	24.87
JUN	1,029	12,954	12.59	64	1,474	1.43	7	661	0.64	3	20,098	19.53
JUL	1,021	19,640	19.24	81	1,412	1.38	6	464	0.45	2	24,125	23.63
AUG	913	15,404	16.87	81	1,993	2.18	10	239	0.26	1	19,104	20.92
SEP	651	10,283	15.80	78	2,237	3.44	17	293	0.45	2	13,111	20.14
OCT	666	15,234	22.87	86	1,929	2.90	11	460	0.69	3	17,705	26.59
NOV	606	11,279	18.61	81	1,446	2.39	10	376	0.62	3	13,980	23.07
DEC	591	10,936	18.50	78	1,342	2.27	10	289	0.49	2	14,058	23.79
TOT	8,822	172,619	19.57	80	22,628	2.57	10	4,577	0.52	2	216,371	24.53
AVG	735	14,385	20.38	80	1,886	2.67	10	381	0.52	2	18,031	25.13
JAN/05	637	13,371	20.99	86	1,534	2.41	10	483	0.76	3	15,474	24.29
FEB	504	12,948	25.69	88	1,255	2.49	9	220	0.44	1	14,753	29.27
MAR	611	15,415	25.23	81	3,176	5.20	17	499	0.82	3	19,100	31.26
APR	673	14,994	22.28	88	1,341	1.99	8	356	0.53	2	17,121	25.44
MAY	847	17,312	20.44	81	2,721	3.21	13	399	0.47	2	21,287	25.13
JUN	1,004	18,824	18.75	76	1,558	1.55	6	234	0.23	1	24,848	24.75
JUL	1,031	26,192	25.41	78	3,977	3.86	12	188	0.18	1	33,592	32.58
AUG	921	28,579	31.03	86	3,120	3.39	9	265	0.29	1	33,414	36.28
SEP	804	24,759	30.80	87	2,873	3.57	10	391	0.49	1	28,448	35.38
OCT	630	17,537	27.84	81	1,475	2.34	7	758	1.20	3	21,665	34.39
NOV	533	13,795	25.88	80	1,578	2.96	9	488	0.92	3	17,174	32.22
DEC	408	14,807	36.29	85	1,654	4.05	9	415	1.02	2	17,449	42.77
TOT	8,603	218,533	25.40	83	26,262	3.05	10	4,696	0.55	2	264,326	30.73
AVG	717	18,211	25.89	83	2,189	3.09	10	391	0.61	2	22,027	31.15
JAN/06	549	14,758	26.88	88	1,435	2.61	9	266	0.48	2	16,685	30.39
FEB	411	12,905	31.40	88	1,164	2.83	8	311	0.76	2	14,725	35.83
MAR	509	18,285	35.92	92	1,252	2.46	6	306	0.60	2	19,950	39.20
APR	516	19,006	36.83	88	1,834	3.55	8	356	0.69	2	21,698	42.05
MAY	609	16,556	27.19	83	1,919	3.15	10	413	0.68	2	19,908	32.69
JUN	870	18,739	21.54	80	1,962	2.26	8	347	0.40	1	23,414	26.91
JUL	862	27,439	31.83	88	1,842	2.14	6	361	0.42	1	31,113	36.10
AUG	677	18,226	26.92	89	1,029	1.52	5	216	0.32	1	20,431	30.18
SEP	526	10,150	19.30	78	2,597	4.94	20	196	0.37	2	13,072	24.85
OCT	656	14,594	22.25	64	5,037	7.68	22	539	0.82	2	22,751	34.68
NOV	626	14,145	22.60	81	2,404	3.84	14	373	0.60	2	17,449	27.87
DEC	448	11,978	26.74	76	3,321	7.41	21	342	0.76	2	15,701	35.05
TOT	7,259	196,781	27.11	83	25,795	3.55	11	4,025	0.55	2	236,895	32.64
AVG	605	16,398	27.45	83	2,150	3.70	11	335	0.58	2	19,741	32.98

PURSE SEINE: REPUBLIC OF KOREA

The statistics in Table 15, which cover the Korean purse seiners in the WCPFC Statistical Area (Figure 1), were determined from catch and effort data held at SPC on 30 June 2007; statistics for 2005–2006, but not 2007, have been adjusted for the misidentification of bigeye as yellowfin and raised to represent the total catch of target tuna species and effort. Figure 36 presents catch rates for skipjack, yellowfin and bigeye. Figure 37 presents estimates of annual catches reported to SPC and WCPFC.

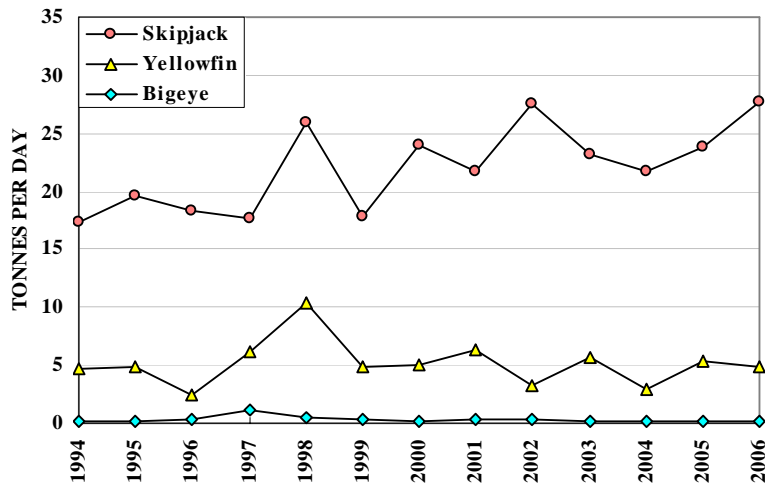


Figure 36. Korean purse seiner catch rates

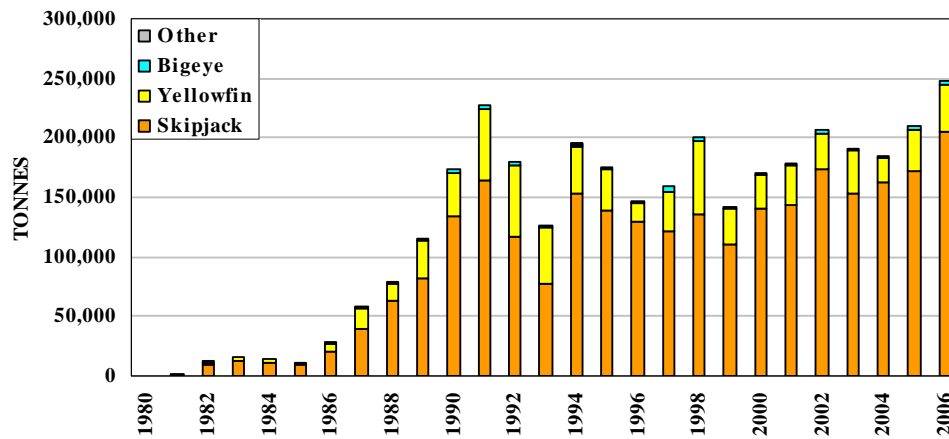


Figure 37. Catches by Korean purse seiners

Table 15. Catch statistics for Korean purse seiners. Units: Effort = days fished or searched; Catch = tonnes; CPUE = tonnes per day fished or searched.

MONTH	EFFORT	SKIPJACK			YELLOWFIN			BIGEYE			TOTAL	
		CATCH	CPUE	%	CATCH	CPUE	%	CATCH	CPUE	%	CATCH	CPUE
JAN/05	592	12,112	20.46	74	4,228	7.14	26	93	0.16	1	16,433	27.76
FEB	466	9,500	20.39	81	2,133	4.58	18	82	0.18	1	11,716	25.15
MAR	562	13,067	23.27	86	2,033	3.62	13	37	0.07	0	15,139	26.96
APR	566	11,481	20.29	81	2,592	4.58	18	59	0.10	0	14,132	24.97
MAY	583	19,300	33.08	97	555	0.95	3	11	0.02	0	19,866	34.05
JUN	600	18,968	31.63	95	895	1.49	4	9	0.02	0	19,996	33.34
JUL	710	17,662	24.89	86	2,938	4.14	14	39	0.05	0	20,638	29.08
AUG	603	12,409	20.58	70	5,335	8.85	30	22	0.04	0	17,766	29.46
SEP	652	8,231	12.63	62	5,092	7.81	38	48	0.07	0	13,371	20.51
OCT	601	10,877	18.10	77	3,167	5.27	22	49	0.08	0	14,093	23.45
NOV	616	19,278	31.29	76	6,046	9.81	24	76	0.12	0	25,400	41.23
DEC	624	17,466	28.01	82	3,837	6.15	18	64	0.10	0	21,367	34.26
TOT	7,174	170,350	23.75	81	38,851	5.42	19	588	0.08	0	209,917	29.26
AVG	598	14,196	23.72	81	3,238	5.37	19	49	0.08	0	17,493	29.19
JAN/06	718	11,446	15.94	78	3,014	4.20	21	206	0.29	1	14,666	20.43
FEB	607	16,720	27.54	92	1,288	2.12	7	84	0.14	0	18,093	29.80
MAR	628	25,758	41.05	87	3,878	6.18	13	125	0.20	0	29,762	47.43
APR	580	24,441	42.14	91	2,290	3.95	9	67	0.12	0	26,798	46.20
MAY	578	16,486	28.54	92	1,427	2.47	8	43	0.07	0	17,959	31.09
JUN	664	22,175	33.41	92	1,926	2.90	8	52	0.08	0	24,158	36.40
JUL	683	21,156	30.98	75	6,833	10.01	24	143	0.21	1	28,133	41.19
AUG	663	19,056	28.76	86	3,003	4.53	14	52	0.08	0	22,111	33.38
SEP	556	14,038	25.24	94	809	1.46	5	27	0.05	0	14,883	26.75
OCT	629	11,460	18.23	71	4,651	7.40	29	110	0.17	1	16,237	25.83
NOV	644	14,208	22.05	88	1,920	2.98	12	59	0.09	0	16,187	25.12
DEC	632	13,275	21.01	70	5,441	8.61	29	292	0.46	2	19,008	30.08
TOT	7,581	210,219	27.73	85	36,481	4.81	15	1,260	0.17	1	247,996	32.71
AVG	632	17,518	27.91	85	3,040	4.73	15	105	0.16	1	20,666	32.81
JAN/07	599	17,780	29.68	84	3,435	5.73	16	20	0.03	0	21,235	35.45
FEB	445	9,145	20.55	65	4,995	11.23	35	0	0.00	0	14,141	31.78
MAR	302	10,683	35.37	88	1,475	4.88	12	2	0.01	0	12,160	40.27
APR	3	120	40.00	100	0	0.00	0	0	0.00	0	120	40.00
MAY
JUN
JUL
AUG
SEP
OCT
NOV
DEC
TOT	1,349	37,728	27.97	79	9,905	7.34	21	22	0.02	0	47,657	35.33
AVG	337	9,432	31.40	79	2,476	5.46	21	6	0.01	0	11,914	36.88

PURSE SEINE: PAPUA NEW GUINEA

The statistics in Table 16, which cover the Papua New Guinea purse seiners in the WCPFC Statistical Area (Figure 1), were determined from catch and effort data held at SPC on 30 June 2007; statistics for 2005–2006, but not 2007, have been raised to represent the total catch of target tuna species and effort. Figure 38 presents catch rates for skipjack, yellowfin and bigeye. Figure 39 presents estimates of annual catches reported to SPC and WCPFC.

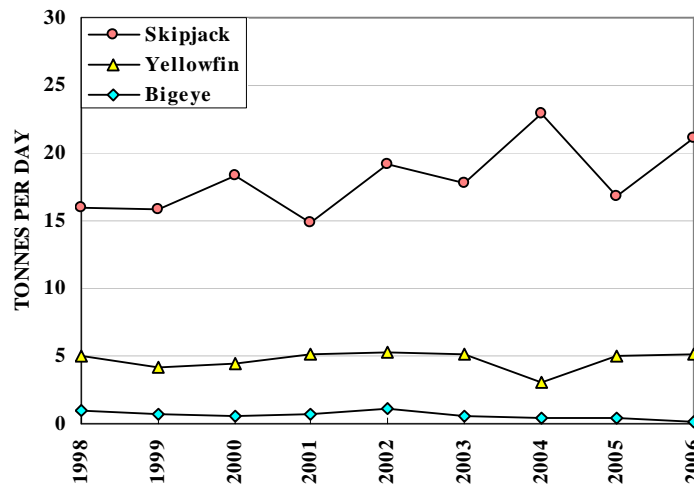


Figure 38. Papua New Guinea purse seiner catch rates

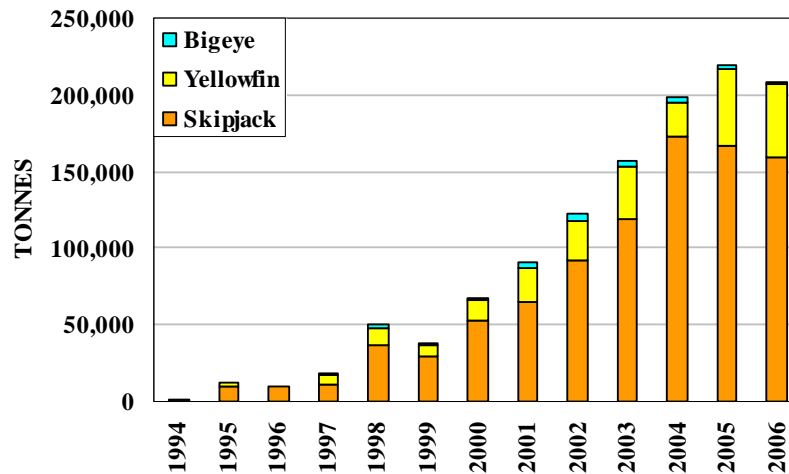


Figure 39. Catches by Papua New Guinea purse seiners

Table 16. Catch statistics for Papua New Guinea purse seiners. Units: Effort = days fished or searched; Catch = tonnes; CPUE = tonnes per day fished or searched.

MONTH	EFFORT	SKIPJACK			YELLOWFIN			BIGEYE			TOTAL	
		CATCH	CPUE	%	CATCH	CPUE	%	CATCH	CPUE	%	CATCH	CPUE
JAN/05	592	9,533	16.10	85	1,577	2.66	14	77	0.13	1	11,197	18.91
FEB	620	9,782	15.77	82	2,020	3.26	17	113	0.18	1	11,921	19.22
MAR	713	16,036	22.48	83	3,028	4.24	16	236	0.33	1	19,320	27.08
APR	718	10,649	14.82	72	3,847	5.36	26	328	0.46	2	14,840	20.66
MAY	965	14,120	14.64	74	4,639	4.81	24	408	0.42	2	19,189	19.89
JUN	941	18,326	19.48	81	3,909	4.16	17	344	0.37	2	22,612	24.04
JUL	1,011	14,774	14.62	71	5,554	5.50	27	418	0.41	2	20,770	20.55
AUG	991	13,660	13.79	68	6,068	6.13	30	377	0.38	2	20,131	20.32
SEP	990	12,814	12.95	65	6,516	6.58	33	338	0.34	2	19,699	19.91
OCT	836	15,723	18.80	76	4,509	5.39	22	342	0.41	2	20,614	24.64
NOV	763	13,797	18.07	75	4,228	5.54	23	283	0.37	2	18,323	24.00
DEC	746	16,895	22.64	79	4,284	5.74	20	259	0.35	1	21,465	28.76
TOT	9,886	166,109	16.80	75	50,178	5.08	23	3,523	0.36	2	220,083	22.26
AVG	824	13,842	17.01	75	4,181	4.95	23	294	0.35	2	18,340	22.33
JAN/06	676	15,123	22.36	84	2,831	4.19	16	120	0.18	1	18,095	26.75
FEB	511	15,217	29.80	94	915	1.79	6	21	0.04	0	16,164	31.65
MAR	587	12,622	21.51	83	2,581	4.40	17	71	0.12	0	15,288	26.05
APR	594	16,014	26.95	90	1,728	2.91	10	56	0.09	0	17,807	29.97
MAY	707	15,659	22.14	80	3,870	5.47	20	107	0.15	1	19,655	27.79
JUN	587	14,650	24.96	79	3,714	6.33	20	89	0.15	0	18,464	31.46
JUL	623	12,155	19.51	79	3,174	5.10	21	69	0.11	0	15,407	24.73
AUG	617	11,683	18.94	83	2,299	3.73	16	58	0.09	0	14,048	22.78
SEP	605	13,280	21.94	75	4,382	7.24	25	120	0.20	1	17,790	29.38
OCT	810	14,391	17.76	75	4,655	5.74	24	126	0.16	1	19,181	23.67
NOV	767	12,988	16.93	78	3,523	4.59	21	86	0.11	1	16,606	21.65
DEC	827	13,148	15.90	66	6,443	7.79	32	280	0.34	1	19,881	24.05
TOT	7,912	166,931	21.10	80	40,116	5.07	19	1,202	0.15	1	208,386	26.34
AVG	659	13,911	21.56	80	3,343	4.94	19	100	0.15	1	17,366	26.66
JAN/07	571	12,052	21.11	81	2,854	5.00	19	19	0.03	0	14,939	26.16
FEB	369	9,552	25.89	83	1,866	5.06	16	22	0.06	0	11,442	31.01
MAR	18	910	50.56	98	15	0.83	2	0	0.00	0	925	51.39
APR
MAY
JUN
JUL
AUG
SEP
OCT
NOV
DEC
TOT	958	22,514	23.50	82	4,735	4.94	17	41	0.04	0	27,306	28.50
AVG	319	7,505	32.52	82	1,578	3.63	17	14	0.03	0	9,102	36.19

PURSE SEINE: CHINESE TAIPEI

The statistics in Table 17, which cover the Chinese Taipei purse seiners in the WCPFC Statistical Area (Figure 1), were determined from catch and effort data held at SPC on 30 June 2007; statistics for 2005–2006, but not 2007, have been raised to represent the total catch of target tuna species and effort. Figure 40 presents catch rates for skipjack, yellowfin and bigeye. Figure 41 presents estimates of annual catches reported to SPC and WCPFC.

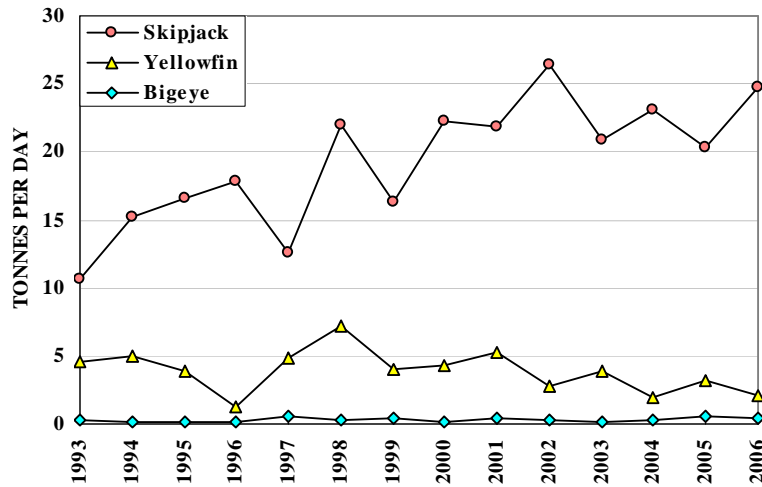


Figure 40. Chinese Taipei purse seiner catch rates

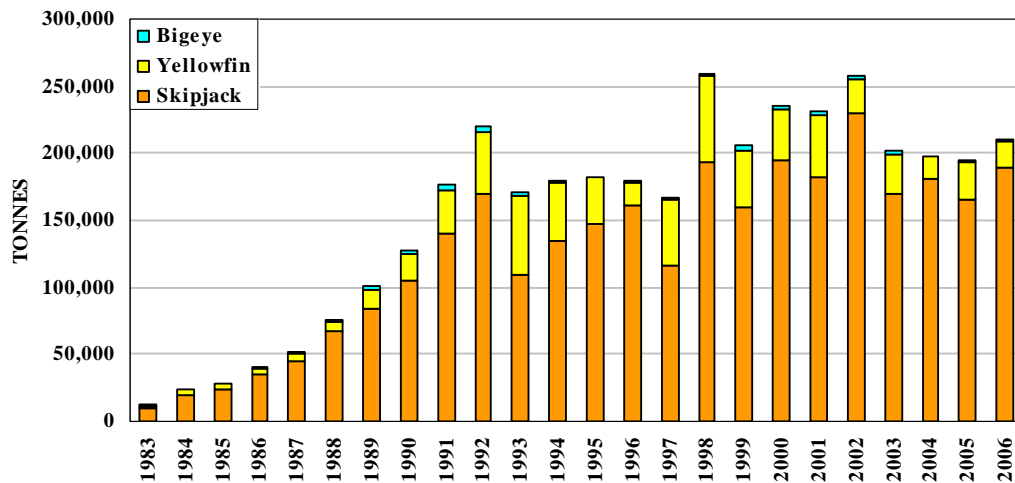


Figure 41. Catches by Chinese Taipei purse seiners

Table 17. Catch statistics for Chinese Taipei purse seiners. Units: Effort = days fished or searched; Catch = tonnes; CPUE = tonnes per day fished or searched.

MONTH	EFFORT	SKIPJACK			YELLOWFIN			BIGEYE			TOTAL	
		CATCH	CPUE	%	CATCH	CPUE	%	CATCH	CPUE	%	CATCH	CPUE
JAN/05	710	11,354	15.99	91	1,034	1.46	8	126	0.18	1	12,516	17.63
FEB	614	10,294	16.77	88	1,253	2.04	11	136	0.22	1	11,685	19.03
MAR	624	14,575	23.36	86	1,937	3.10	11	346	0.55	2	16,864	27.03
APR	666	8,704	13.07	78	1,987	2.98	18	479	0.72	4	11,172	16.77
MAY	642	11,918	18.56	83	1,921	2.99	13	494	0.77	3	14,337	22.33
JUN	667	17,678	26.50	93	1,126	1.69	6	256	0.38	1	19,063	28.58
JUL	753	15,728	20.89	87	2,139	2.84	12	282	0.37	2	18,151	24.10
AUG	753	13,544	17.99	75	4,103	5.45	23	404	0.54	2	18,052	23.97
SEP	722	10,617	14.70	69	4,006	5.55	26	503	0.70	3	15,439	21.38
OCT	690	17,528	25.40	88	2,044	2.96	10	340	0.49	2	19,922	28.87
NOV	698	17,443	24.99	87	2,176	3.12	11	399	0.57	2	20,026	28.69
DEC	666	17,327	26.02	88	1,987	2.98	10	430	0.65	2	19,754	29.66
TOT	8,205	166,710	20.32	85	25,713	3.13	13	4,195	0.51	2	196,981	24.01
AVG	684	13,893	20.35	85	2,143	3.10	13	350	0.51	2	16,415	24.00
JAN/06	670	19,018	28.37	93	1,274	1.90	6	208	0.31	1	20,509	30.60
FEB	576	18,543	32.21	97	440	0.76	2	122	0.21	1	19,112	33.20
MAR	615	22,519	36.63	95	1,010	1.64	4	112	0.18	0	23,645	38.46
APR	585	21,108	36.08	96	743	1.27	3	154	0.26	1	22,014	37.63
MAY	586	15,343	26.18	91	1,189	2.03	7	236	0.40	1	16,772	28.61
JUN	652	15,492	23.76	91	1,241	1.90	7	204	0.31	1	16,940	25.99
JUL	673	12,372	18.37	89	1,309	1.94	9	287	0.43	2	13,969	20.74
AUG	722	13,196	18.28	92	1,048	1.45	7	152	0.21	1	14,396	19.94
SEP	654	10,467	16.01	91	898	1.37	8	137	0.21	1	11,503	17.59
OCT	658	14,436	21.93	82	2,773	4.21	16	382	0.58	2	17,593	26.73
NOV	644	13,939	21.65	87	1,630	2.53	10	387	0.60	2	15,958	24.79
DEC	673	14,750	21.93	83	2,721	4.05	15	334	0.50	2	17,806	26.48
TOT	7,707	191,181	24.80	91	16,275	2.11	8	2,716	0.35	1	210,215	27.27
AVG	642	15,932	25.12	91	1,356	2.09	8	226	0.35	1	17,518	27.56
JAN/07	460	12,627	27.45	91	1,106	2.40	8	59	0.13	0	13,803	30.01
FEB	77	3,438	44.65	88	448	5.82	12	4	0.05	0	3,890	50.52
MAR
APR
MAY
JUN
JUL
AUG
SEP
OCT
NOV
DEC
TOT	537	16,065	29.92	91	1,554	2.89	9	63	0.12	0	17,693	32.95
AVG	269	8,033	36.05	91	777	4.11	9	32	0.09	0	8,846	40.27

PURSE SEINE: UNITED STATES OF AMERICA

The statistics in Table 18, which cover the United States purse seiners in the WCPFC Statistical Area (Figure 1), were determined from catch and effort data held at SPC on 30 June 2007; statistics for 2004–2006 have been raised to represent the total catch of target tuna species and effort. Figure 42 presents catch rates for skipjack, yellowfin and bigeye. Figure 43 presents estimates of annual catches reported to SPC and WCPFC.

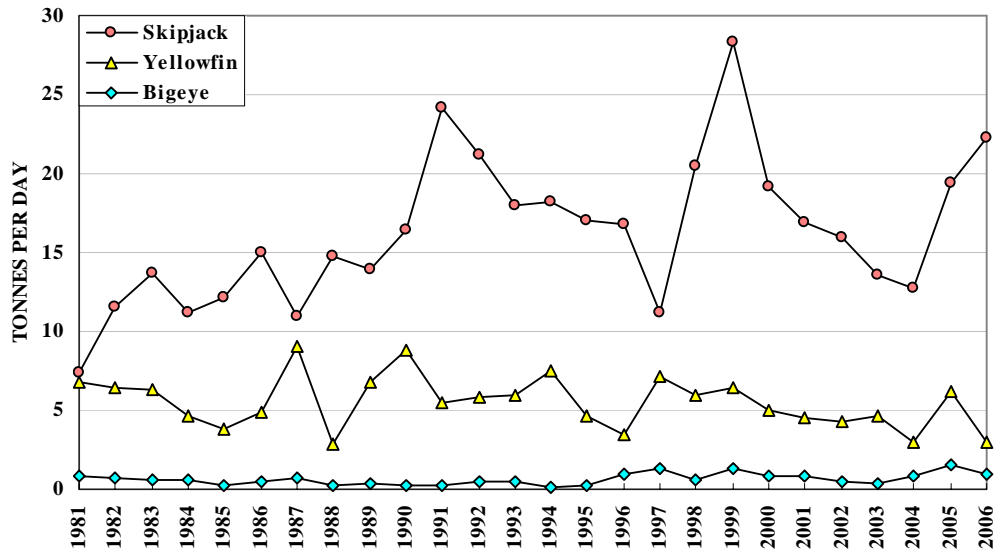


Figure 42. United States purse seiner catch rates

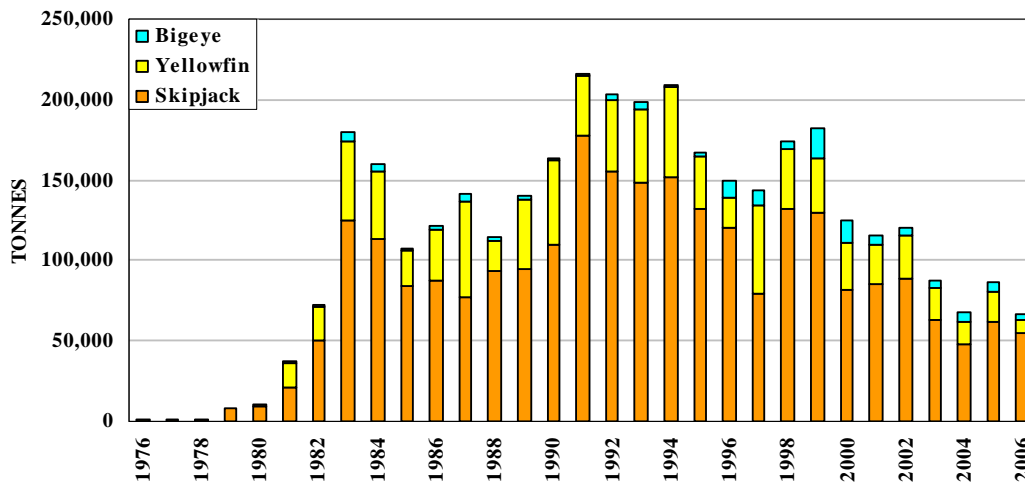


Figure 43. Catches by United States purse seiners

Table 18. Catch statistics for United States purse seiners. Units: Effort = days fished or searched; Catch = tonnes; CPUE = tonnes per day fished or searched.

MONTH	EFFORT	SKIPJACK			YELLOWFIN			BIGEYE			TOTAL	
		CATCH	CPUE	%	CATCH	CPUE	%	CATCH	CPUE	%	CATCH	CPUE
JAN/05	289	2,557	8.84	78	550	1.90	17	182	0.63	6	3,288	11.37
FEB	325	3,775	11.63	85	488	1.50	11	179	0.55	4	4,442	13.68
MAR	381	7,284	19.11	83	1,098	2.88	12	424	1.11	5	8,811	23.12
APR	279	5,229	18.77	77	1,108	3.98	16	454	1.63	7	6,791	24.37
MAY	261	6,863	26.32	79	1,306	5.01	15	487	1.87	6	8,655	33.20
JUN	254	6,430	25.27	76	1,443	5.67	17	595	2.34	7	8,468	33.28
JUL	252	4,328	17.15	59	2,290	9.08	31	662	2.62	9	7,279	28.85
AUG	251	3,836	15.26	69	1,277	5.08	23	456	1.81	8	5,569	22.16
SEP	242	3,118	12.88	46	2,983	12.32	44	678	2.80	10	6,779	28.01
OCT	251	5,235	20.83	48	5,112	20.34	47	607	2.42	6	10,956	43.60
NOV	246	8,451	34.35	85	1,254	5.10	13	225	0.91	2	9,930	40.36
DEC	152	4,695	30.92	85	650	4.28	12	164	1.08	3	5,509	36.28
TOT	3,184	61,801	19.41	71	19,558	6.14	23	5,111	1.61	6	86,479	27.16
AVG	265	5,150	20.11	71	1,630	6.43	23	426	1.65	6	7,207	28.19
JAN/06	182	1,005	5.51	66	437	2.39	29	82	0.45	5	1,523	8.35
FEB	269	5,696	21.17	91	424	1.58	7	133	0.49	2	6,253	23.24
MAR	222	5,777	26.02	91	391	1.76	6	148	0.67	2	6,317	28.45
APR	230	7,508	32.70	91	522	2.27	6	225	0.98	3	8,255	35.95
MAY	215	5,322	24.71	89	457	2.12	8	199	0.92	3	5,978	27.76
JUN	146	1,501	10.25	81	261	1.78	14	85	0.58	5	1,847	12.61
JUL	211	2,951	13.99	70	1,015	4.81	24	256	1.22	6	4,222	20.02
AUG	171	5,561	32.61	87	596	3.49	9	214	1.25	3	6,371	37.36
SEP	221	6,411	29.02	87	679	3.07	9	290	1.31	4	7,380	33.41
OCT	288	6,298	21.89	81	1,129	3.92	15	310	1.08	4	7,736	26.89
NOV	194	6,195	32.00	85	745	3.85	10	314	1.62	4	7,254	37.47
DEC	207	2,682	12.98	70	920	4.45	24	221	1.07	6	3,823	18.50
TOT	2,555	56,908	22.27	85	7,576	2.96	11	2,476	0.97	4	66,960	26.21
AVG	213	4,742	21.90	85	631	2.96	11	206	0.97	4	5,580	25.83
JAN/07	190	2,534	13.33	75	743	3.91	22	120	0.63	4	3,396	17.87
FEB	109	2,426	22.25	88	345	3.16	12	0	0.00	0	2,770	25.42
MAR	47	1,855	39.47	90	198	4.20	10	15	0.31	1	2,067	43.98
APR
MAY
JUN
JUL
AUG
SEP
OCT
NOV
DEC
TOT	346	6,814	19.69	83	1,285	3.71	16	134	0.39	2	8,233	23.80
AVG	115	2,271	25.02	83	428	3.76	16	45	0.31	2	2,744	29.09