

Natalae

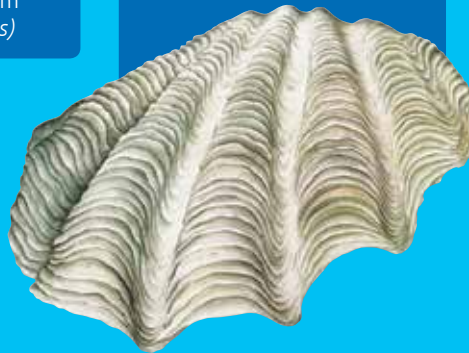
Giant Clams (Tridacnidae)



Sanbis natalae
Bear paw giant clam
(*Hippopus hippopus*)



Ston natalae
Fluted giant clam
(*Tridacna squamosa*)



Korel natalae
Elongate giant clam
(*Tridacna maxima*)



Smol natalae
Crocus giant clam
(*Tridacna crocea*)



Spisis mo distribiusen

Famili blong natalae ia Tridacnidae i inkludim sam spisis we oli kolek ol giant clam, we oli stap long ol difren ples long Indian mo Pasifik Osen.

Spisis ia ol saes blong olgeta oli defren, stat long sam we oli smol, oli 15 cm nomo, nem blong olgeta i crocus giant clam, *Tridacna crocea*, go kasem ol stret giant clam, *Tridacna gigas*, we oli save gru kasem wan longfala blong 1 mita mo wan wet we i save ova long 200 kilogram.

Elongate giant clam, *Tridacna maxima*, hem nao hemi stap long plante ples aot long ol nara natalae long Pasifik, mo nara wan hemi fluted giant clam, *Tridacna squamosa*. Long ol spisis ia, kala blong mit we yu save lukim taem sel i open (mantle blong hem) i braon mo haf red mo blu go kasem yelo mo grin. Natalae we i sidaon long sanbij nomo, bear paw giant clam, *Hippopus hippopus*, hemi save gru kasem 40 cm, kala blong mit blong hem i yelo wetem haf blak.



Ples we natalae i stap long hem mo kakae blong hem

Elongate giant clam, *Tridacna maxima*, mo crocus giant clam, *Tridacna crocea*, i luk se oli stap berem insaed long ol korel o ston, mo sel blong crocus giant clam hemi haed fulwan insaed long korel o ston go kasem ej blong sel blong hem.

Ol natalae oli stap dring solwota we i pas tru long ol hol (luk long pikja blong hem) mo sem taem seftem aot ol smol plant we oli flot insaed long wota ia we i kakae blong olgeta. Olgeta oli save karem kakae tu long ol smolsmol plant (*zooxanthellae*) we oli laef insaed long mit blong natalae. From ol smolsmol plant ia oli nidim laet blong san, ol bigfala natalae oli save laef mo gru nomo insaed long solwota we i klia mo salo.



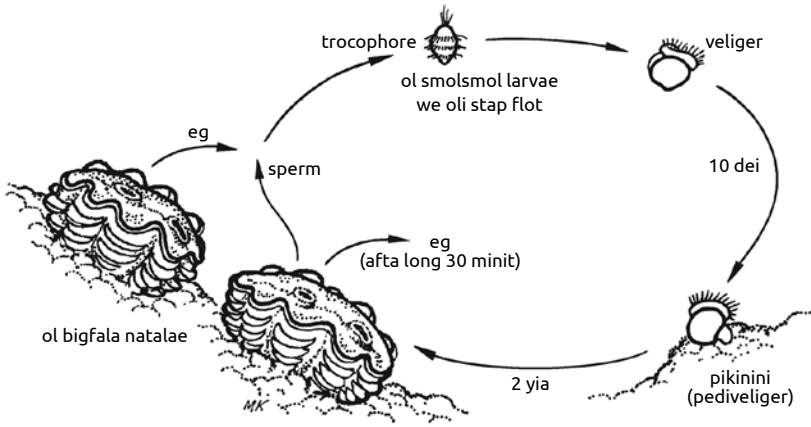


Riprodaksen mo laef saekol

Ol bigfala natalae oli statem laef blong olgeta olsem ol man mo oli grup finis taem oli gat 2 yia; afta long taem ia oli gat ol riprodaktif pat long bodi blong olgeta blong man mo woman sem taem, blong mekem pikinini.

Spawning hemi tekem ples long ol manis we i hot lelebet; taem ol natalae i save se i gat eg long solwota raon long olgeta, oli kapsaetem sperm tru long outlet opening (luk long pikja). Klosap 30 minit afta oli letemaot sperm, wan natalae i putum aot eg blong hem, minim se hemi no save fetalaesem eg blong hem nomo wetem stret sperm blong hem.

Namba blong eg we wan natalae i putum aot hemi defren long ol defren spisis, mo ol bigfala natalae oli save prodiusim ol milian blong eg. Ol eg we i fetalaes finis oli brok mo ol smolsmol larvae oli kam aot mo stap flot long solwota long 10 dei. Aot long evri taosen larvae we oli flot, anda long wan i save laef blong kam wan pikinini natalae we i go sidaon long bed blong solwota long ful laef blong hem. Mo aot long evri hundred pikinini, anda long wan i save gru i kam bigwan we i save mekem pikinini.



Ol kaen fasin blong manejmen we yu save jusum

Manejmen blong natalae hemi impoten tumas from plante spisis oli bin kasem tumas long olgeta mo olgeta i lus finis long plante eria long Pasifik.

Plante otoriti blong fiseriss oli bin putum wan minimam saes limit long saed blong loa wetem tingting blong alaoem ol natalae blong mekem pikinini wan o mo taem bifo oli karem olgeta. Saes limit blong ol defren spisis i stap long wan buk blong SPC (www.spc.int), nem blong hem Size limits and other coastal fiserises regulations in the Pacific Islands region.

Sam long ol otoriti oli bin aplaem wan saes limit nomo long evri spisis (blong givim wan eksampol, 180 mm blong evri spisis blong natalae). Saes limit ia i save bigwan tumas long ol spisis we i smol, olsem elongate giant clam *Tridacna maxima*, we i save gru kasem 350 mm nomo, mo i save smol tumas blong ol spisis olsem smooth natalae, *Tridacna derasa*, we i save gru kasem 600 mm. Saes limit i save wok gudwan mo sapos oli putum stret limit long wanwan spisis.

Sam otoriti oli bin putum wan ban long fasin blong havestem ol natalae blong salem olgeta mo oli putum wan bag limit long ol natalae we oli kolektem blong olgeta nomo i kakae (maet 3 go kasem 10 natalae blong wan man long wan dei). Blong salem natalae long ol lokol hotel o pablik ples blong kakae sam long ol otoriti i putum wan ban o putum wan stret limit long namba we oli save salem. Ol nasonal otoriti i gat impoten wok blong mekem blong putum ban long eksplot blong natalae mo blong blokem fasin blong ol sip blong ovasi we oli stap kolektem ol natalae we i no folem loa.

Long Vanuatu, loa blong fiseris hemi no alau blong havestem wael natalae blong expotem. Ikat faen sapos eni man i brekem loa ia:

- Sapos wan individual peson, faen isave kasem VT200,000; or
- Sapo wan kampani, faen I save kasem VT1,000,000.

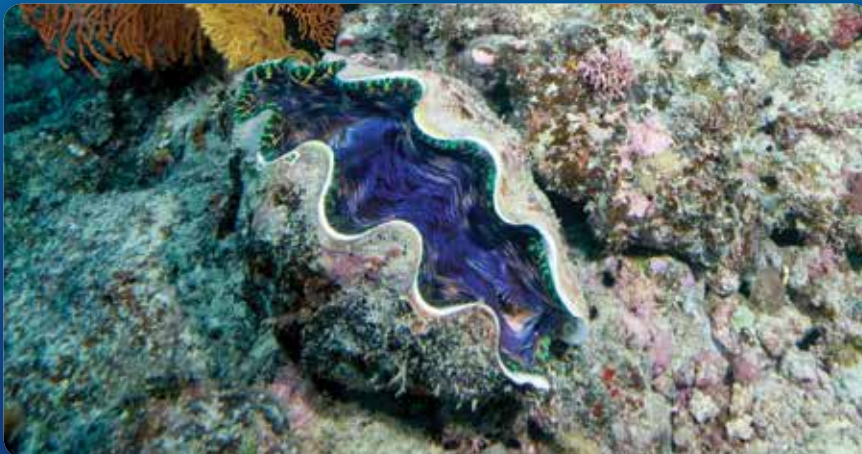
Ol komiuniti i save sapotem ol rul we ol nasonal otoriti oli putum long ol fasin olsem:

- putum wan ban long fasin blong jusum ol tul blong pulum win anda long wota olsem SCUBA, we i save provaedem sam proteksen long ol bigfala natalae we oli laef long dip solwota, we olgeta i prodiusim ol pikinini blong natalae we i save kam stap long ol eria we wota i salo;
- setemap tabu eria we oli no save tekem natalae long hem. Long ol tabu eria ia, i nid blong gat bigfala namba blong natalae insaed long wan smol eria, blong givim mo janis long ol sperm blong fetalaesem eg taem oli kam aot long ol natalae we i stap klosap. Afta we ol larvae i flot long solwota long 10 dei maet ol pikinini blong natalae i save kam stap long eria klosap we taed i save pulum olgeta mo long ples ia oli save gru mo long fiuja oli rere blong ol fisa i kolektem olgeta.



Ol fasin blong kasem natalae

Oli save karem ol natalae long han taem solwota i drae. Oli save daeva from olgeta tu, be i tabu blong jusum ol tul blong pulum win anda long wota olsem SCUBA.



Gaed mo ol toksave ia hemi wok blong SPC (www.spc.int) we i wok tugeta wetem LMMA (www.lmmanetwork.org) blong helpem pipol we oli wok wetem ol fising komiuniti blong givim advaes long ol defren mo gud fiseris manejmen joes. Blong kat mo ekspleneson long ol toktok we istap insaed long Gaed mo ol toksave ia, yu save luk long gaed buk. Foto : Mathieu Juncker



Pacific Community
Communauté du Pacifique

The Locally-Managed Marine Area (LMMA) Network



UNION EUROPÉENNE