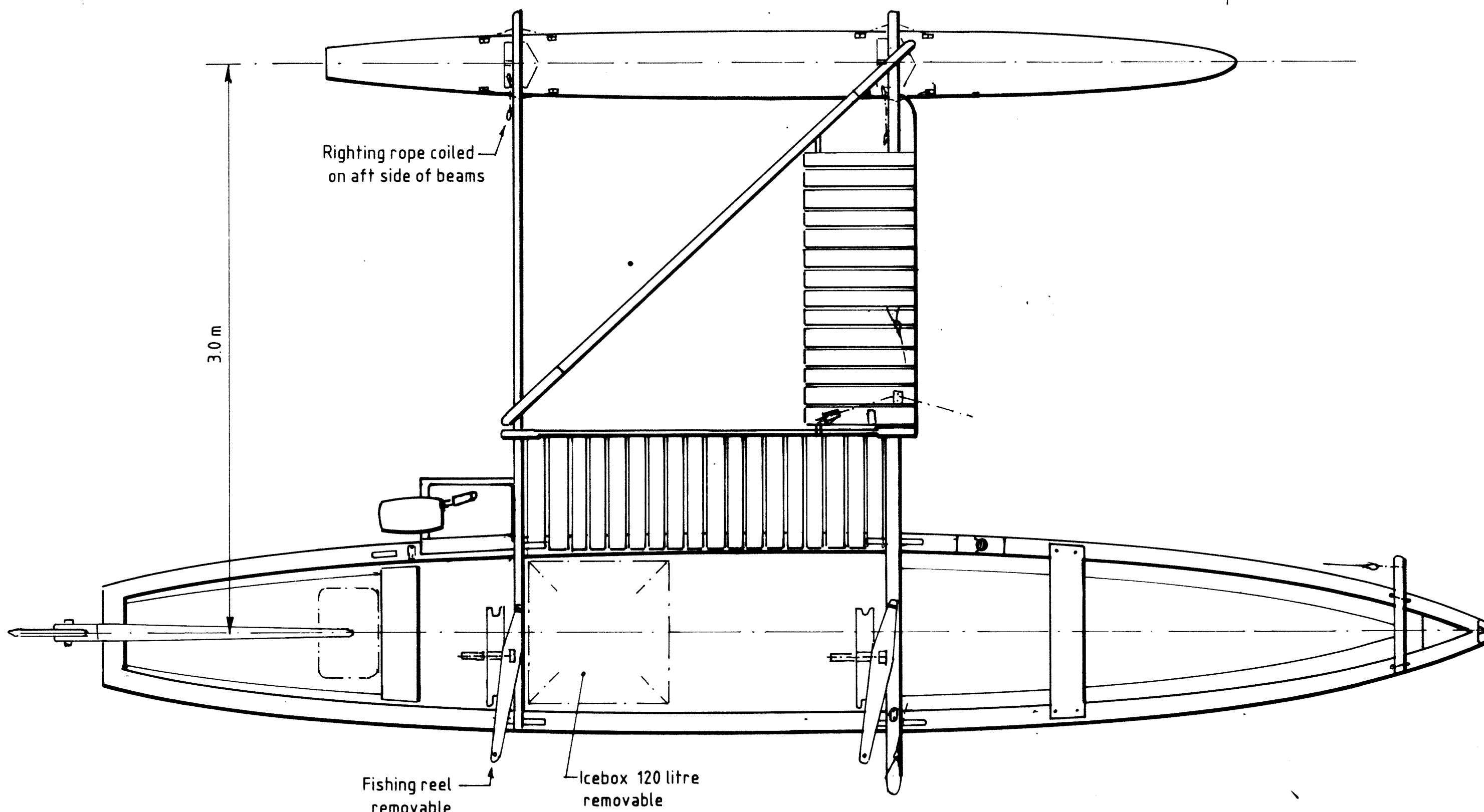
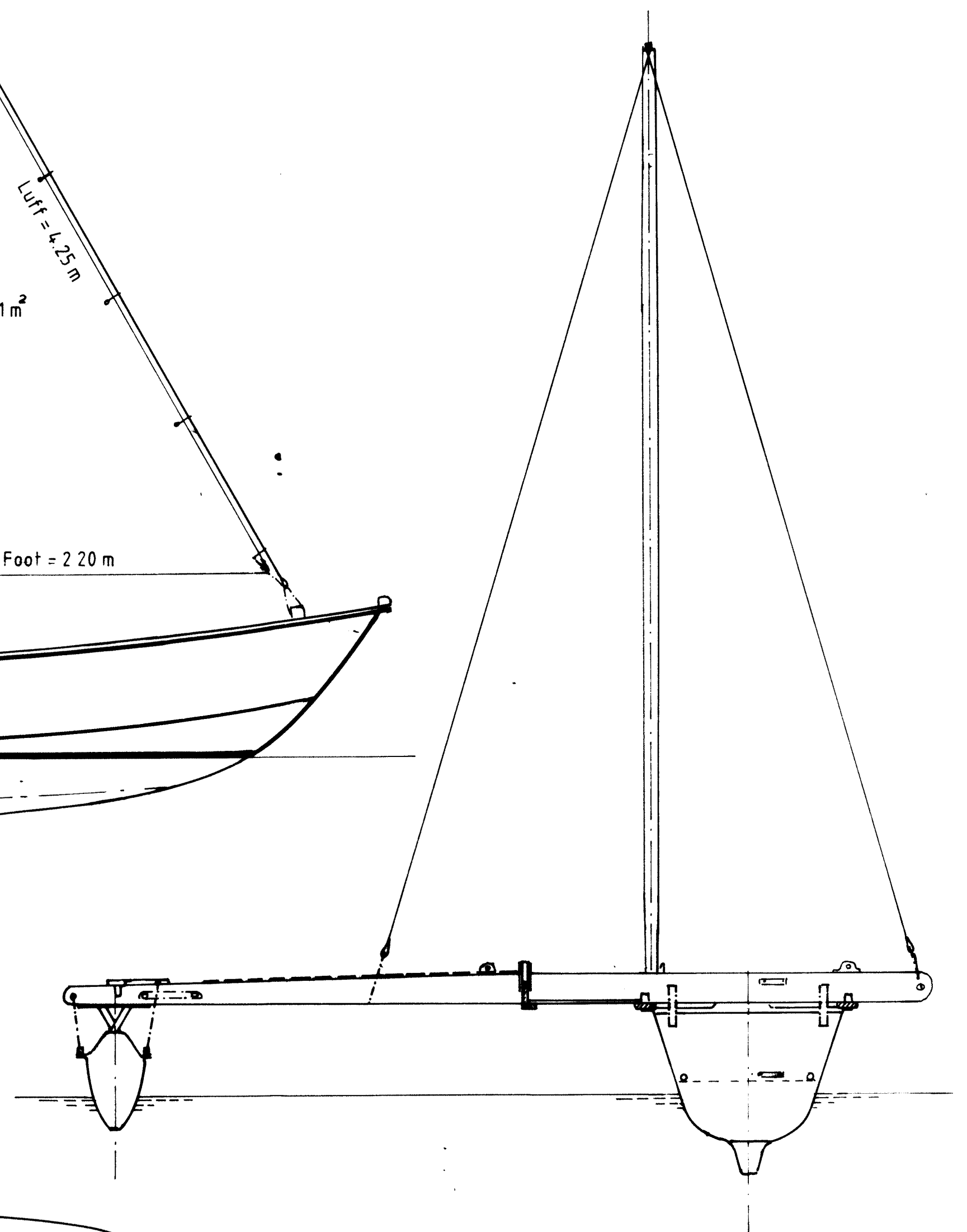
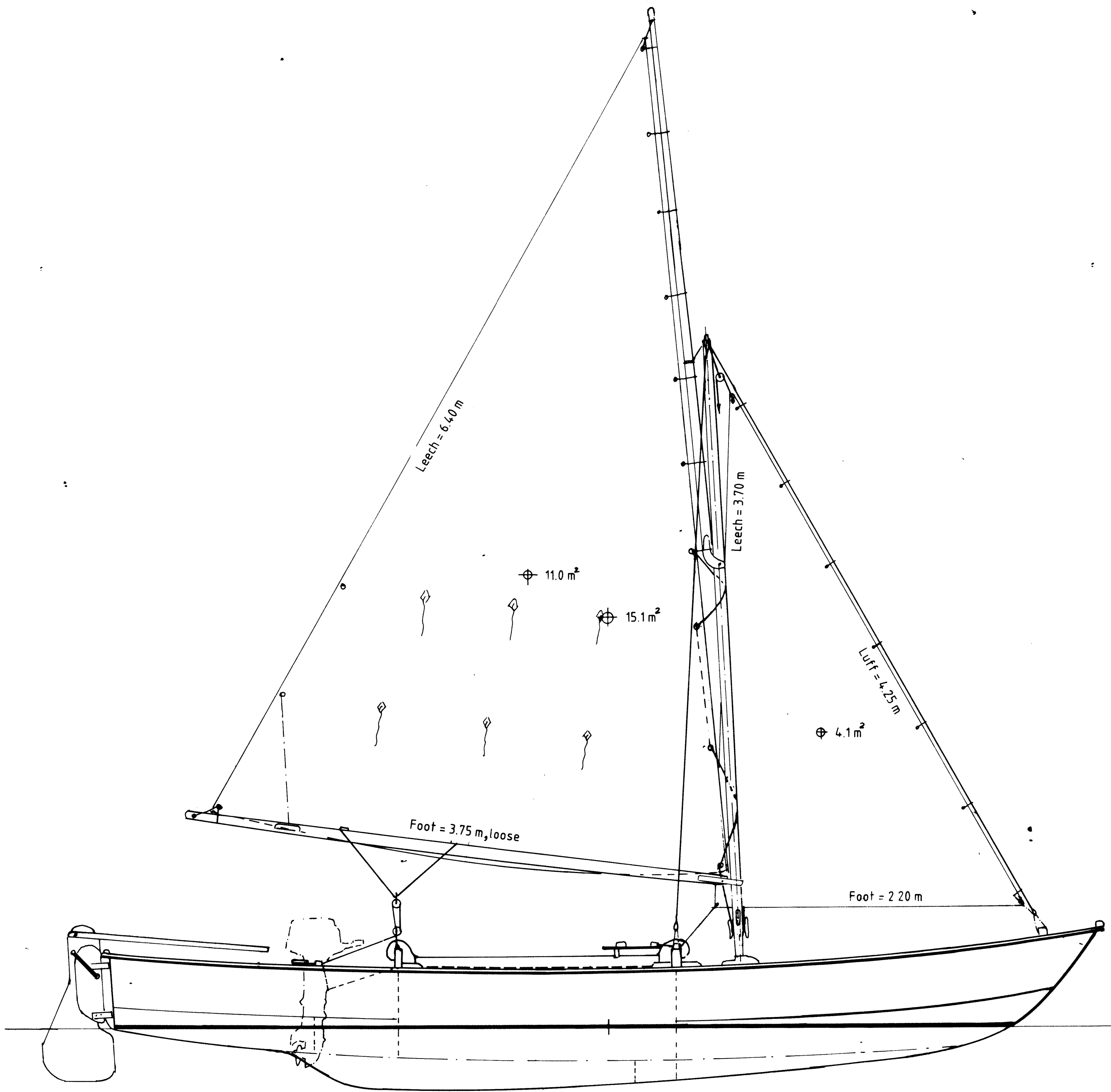


## **FAO copyright and disclaimer notices**

This information product is intended to be used by anyone who wants to build a boat to a particular and suitable FAO design, it being understood that it is the responsibility of the intended user regarding the selection of a vessel design on the basis of its suitability for the intended fishery, sea state and weather and the availability of suitable construction material and building capability. Furthermore, it is the responsibility of the intended user to comply with national legislation for authorization to construct a fishing vessel and obtain approval of technical specifications. It being noted that the application to build a vessel must be accompanied by the specifications of mandatory safety equipment and outfit. In the case there is no national legislation in place for the design, construction and equipment of vessels FAO recommends that the intended user applies appropriate international standards, such as the FAO/ILO/IMO Safety recommendations for decked fishing vessels of less than 12 metres in length and undecked fishing vessels.

The designations employed and the presentation of material in this information product do not imply the expression of any opinion whatsoever on the part of the Food and Agriculture Organization of the United Nations (FAO) concerning the legal or development status of any country, territory, city or area or of its authorities, or concerning the delimitation of its frontiers or boundaries. The mention of specific companies or products of manufacturers, whether or not these have been patented, does not imply that these have been endorsed or recommended by FAO in preference to others of a similar nature that are not mentioned.

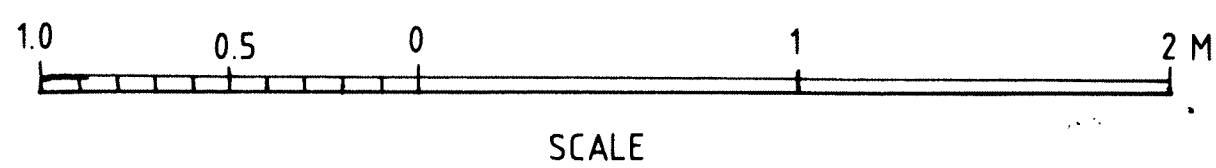
All rights reserved. FAO encourages the reproduction and dissemination of material in this information product. Non-commercial uses will be authorized free of charge, upon request. Reproduction for resale or other commercial purposes, including educational purposes, may incur fees. Applications for permission to reproduce or disseminate FAO copyright materials, and all queries concerning rights and licences, should be addressed by e-mail to [copyright@fao.org](mailto:copyright@fao.org) or to the Chief, Publishing Policy and Support Branch, Office of Knowledge Exchange, Research and Extension, FAO, Viale delle Terme di Caracalla, 00153 Rome, Italy.



**PARTICULARS**

Length over all	LOA = 7.15 m 23' 6"	
Beam maximum	BOA = 4.15 m	
Beam moulded main hull	BMD = 0.91 m	
Depth moulded main hull ex keel	DMD = 0.63 m	
Cubic number main hull	CUNO = LOA × BMD × DMD = 4.1 m <sup>3</sup>	
Draught DWL	T = 0.44 m	
Freeboard minimum DWL	F = 0.40 m	
<b>Displacement</b>	<b>Main hull</b>	<b>Outrigger</b>
Empty	180 kg	50 kg
Sailrig, engine, fuel	80 kg	
Icebox, half full	100 kg	
Crew, 3 men	210 kg	
<b>Displacement service</b>	<b>570 kg</b>	<b>50 kg</b>
Auxillary engine : Outboard, long shaft 20", 4-8 Hp		
Service speed; 4 hp = 6.5 knots, 8 hp = 9.0 knots		

NOTE : In case of capsize, the canoe can be righted by two men standing on the main hull and pulling the ropes attached to the outrigger. Built in flotation should make the canoe float sufficiently high to permit bailing with a bucket

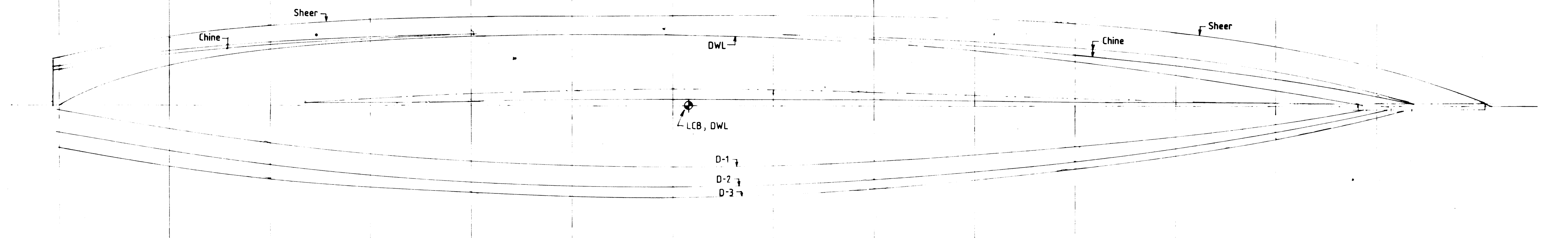
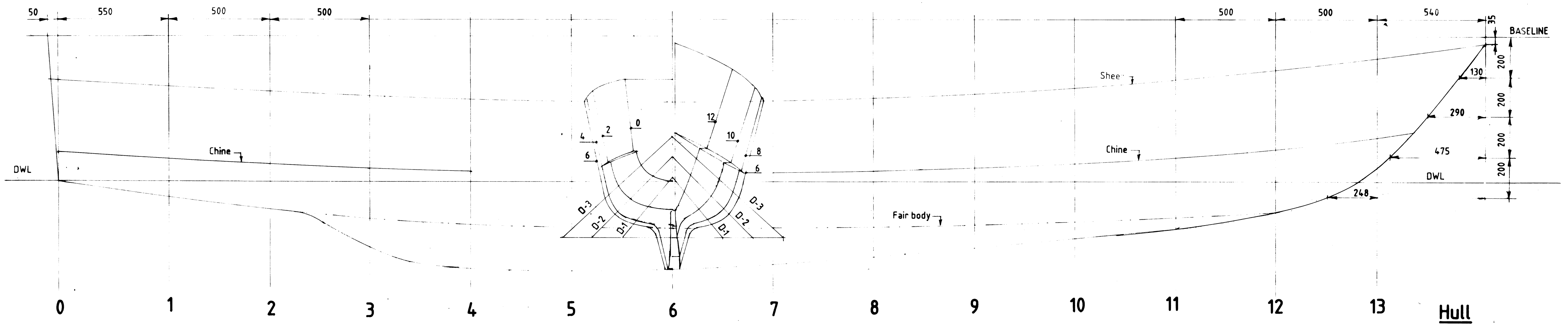


SCALE

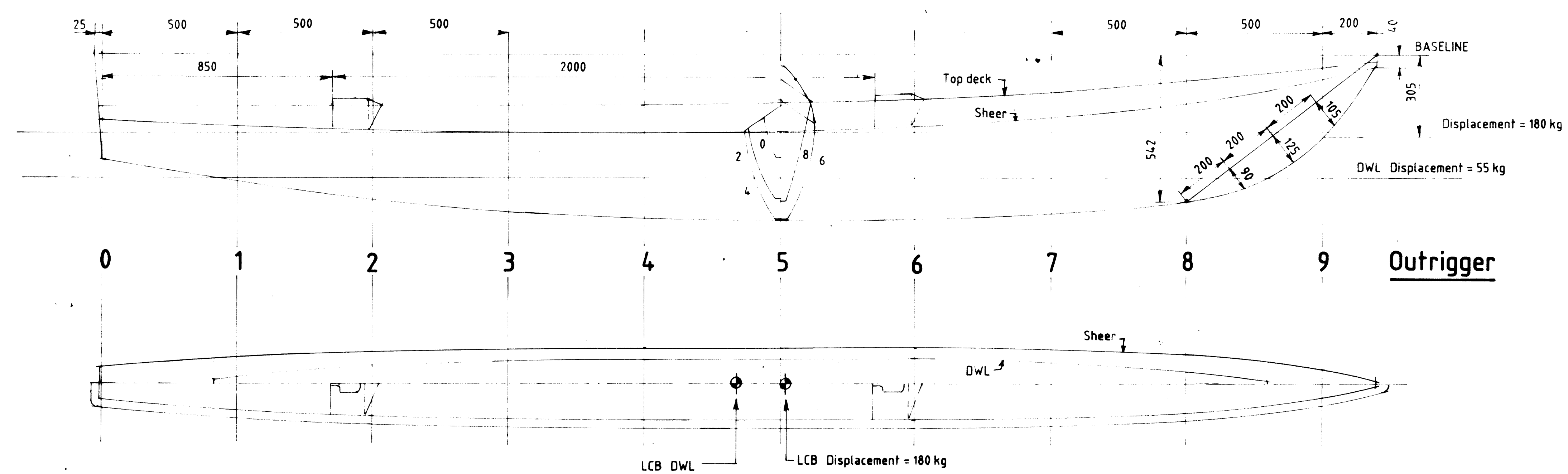


**7.1m Outrigger Canoe  
GENERAL ARRANGEMENT**

SCALE = 1 : 20	DESIGN NO.	DRAWING NO.
DESIGN : <i>Ø. Guldbrandsson</i>	<b>VAN - 2</b>	<b>1</b>
Grimstad, Sept., 1991		



FOR CLARITY ONLY EVERY SECOND SECTION SHOWN

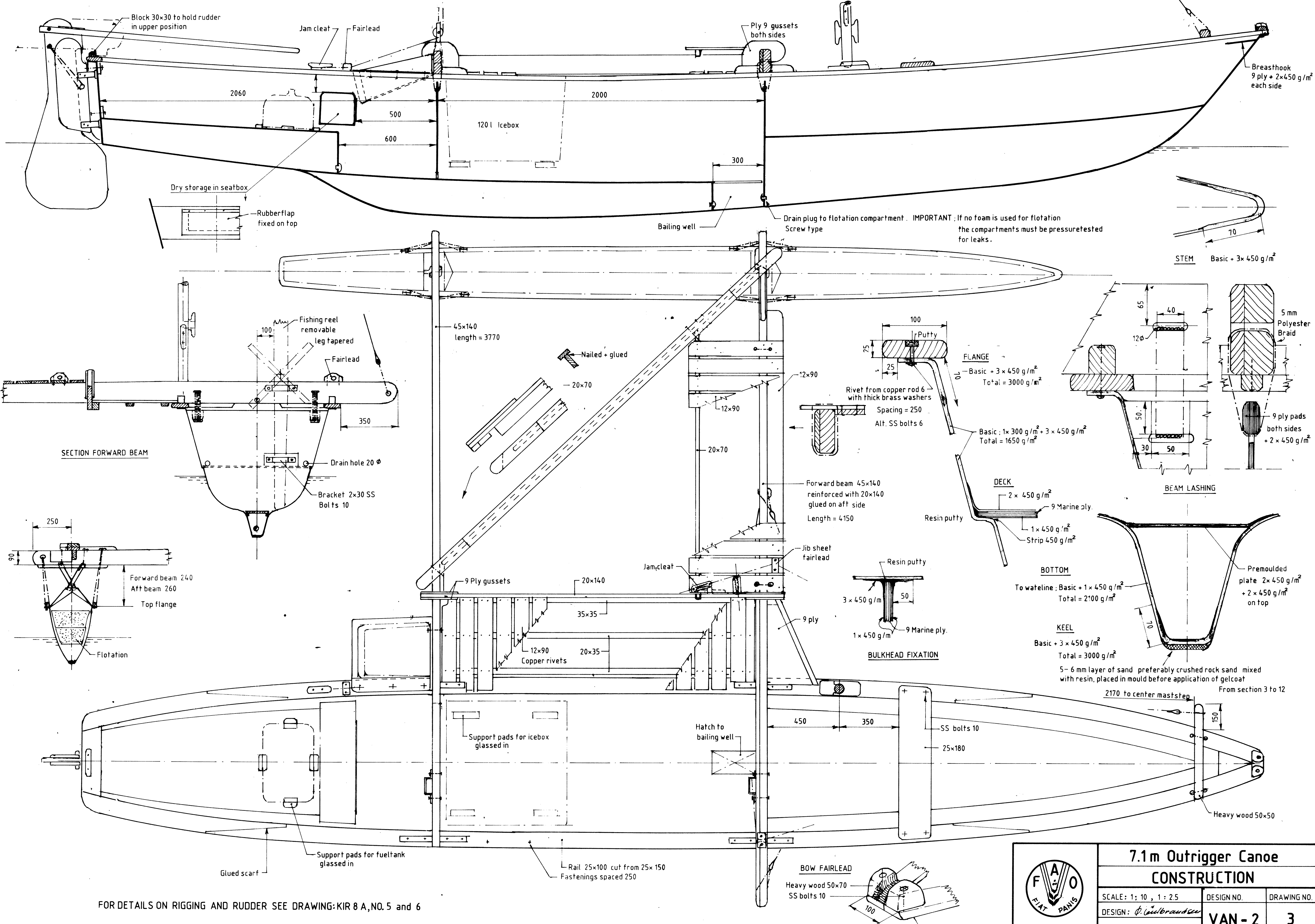


PARTICULARS		Hull	Outrigger
Length over all	LOA	7.15 m	4.72 m
Beam moulded	BMD	0.91 m	0.26 m
Depth moulded without keel	DMD	0.63 m	0.33 m
Cubic number	CUNO = LOA x BMD x DMD	4.1 m <sup>3</sup>	0.4 m <sup>3</sup>
Length waterline	DWL	L	6.45 m
Beam waterline	DWL	B	0.70 m
Draught	DWL	T	0.44 m
Freeboard minimum	DWL	F	0.40 m
Displacement no load		250 kg	55 kg
Service load 3 men + fuel + fish		320 kg	
Displacement service	Δ	570 kg	
Service speed, 4 hp outboard engine		= 6.5 knots	
Service speed, 8 hp outboard engine		= 9.0 knots	
COEFFICIENTS DWL:			
	L/B	9.2	19
	$\nabla / (0.1L)^3$	2.1	1.0
Prismatic coefficient		0.54	0.65
1/2 angle of entrance	φ	8.5°	6°
V / √L Speed = 6.5 knots		1.4	1.8
Speed = 9.0 knots		1.9	2.5

### 7.1 m Outrigger Canoe

#### LINES

SCALE = 1 : 10	DESIGN NO.	DRAWING NO.
DESIGN : <i>φ. Lou/branden</i>	<b>VAN - 2</b>	<b>2</b>
Grimstad, Sept. 1991		



FOR DETAILS ON RIGGING AND RUDDER SEE DRAWING: KIR 8 A, NO. 5 and 6

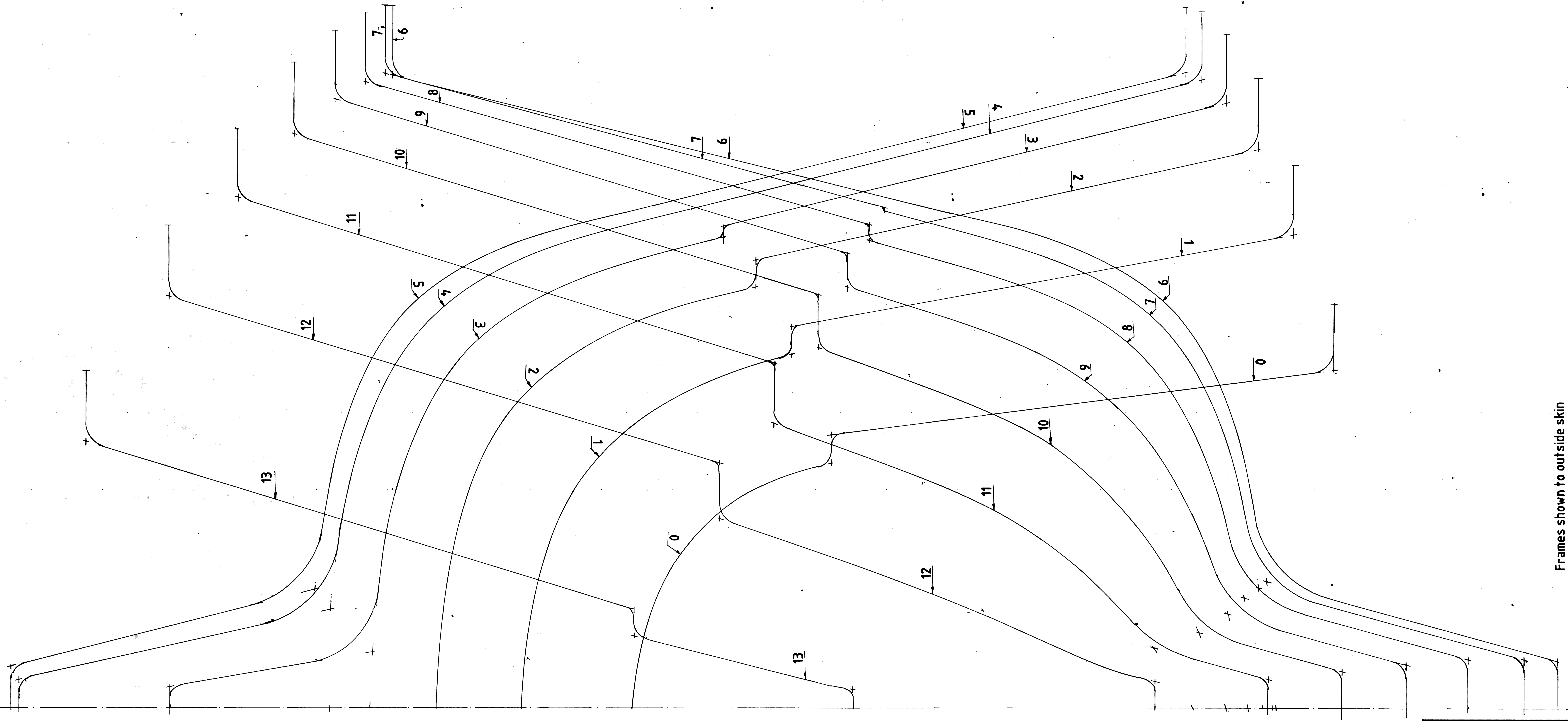


### 7.1m Outrigger Canoe CONSTRUCTION

SCALE: 1: 10, 1: 2.5	DESIGN NO.	DRAWING NO.
DESIGN: G. Lindstrand	<b>VAN - 2</b>	<b>3</b>
Gimstad Sept, 1991		



Base line forebody



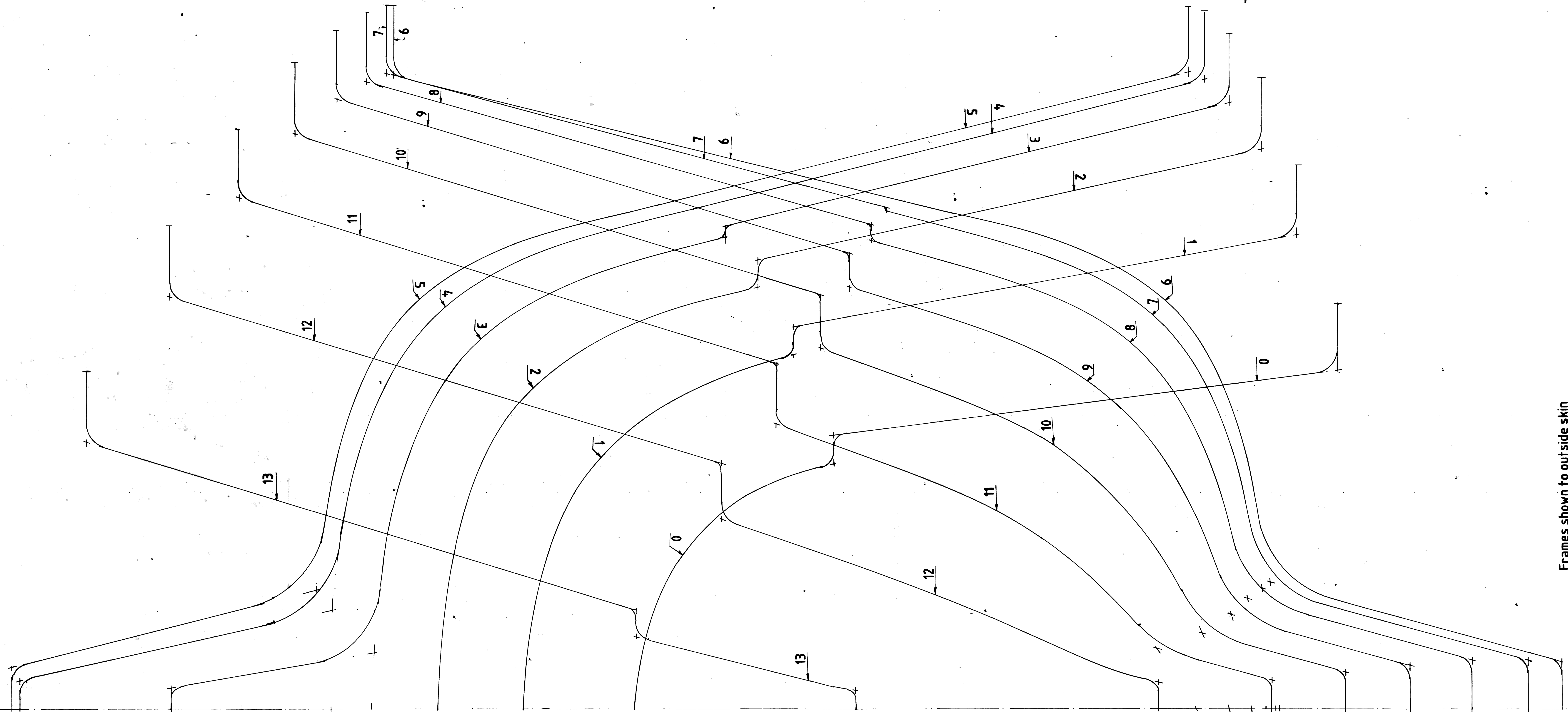
Frames shown to outside skin

Base line aft body



7.1m Outrigger Canoe		
FRAMES		
SCALE : 1 : 1	DESIGN NO.	DRAWING NO.
DESIGN : <i>P. Grimstad</i>	<b>VAN - 2</b>	<b>4</b>
Grimstad, Sept. 1991		

Base line forebody



Frames shown to outside skin

Base line aft body



7.1m Outrigger Canoe

FRAMES

SCALE: 1:1

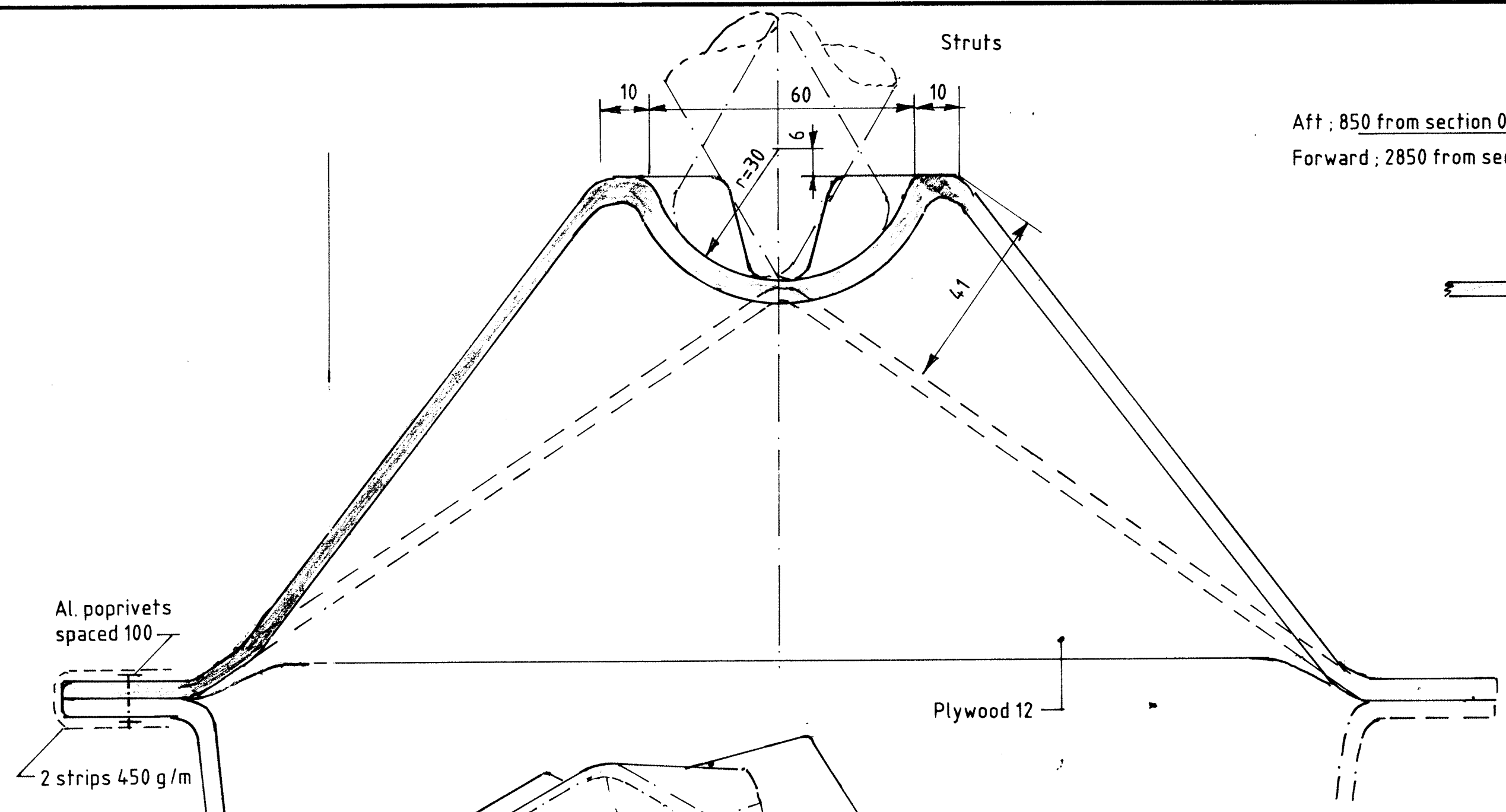
DESIGN NO.

DRAWING NO.

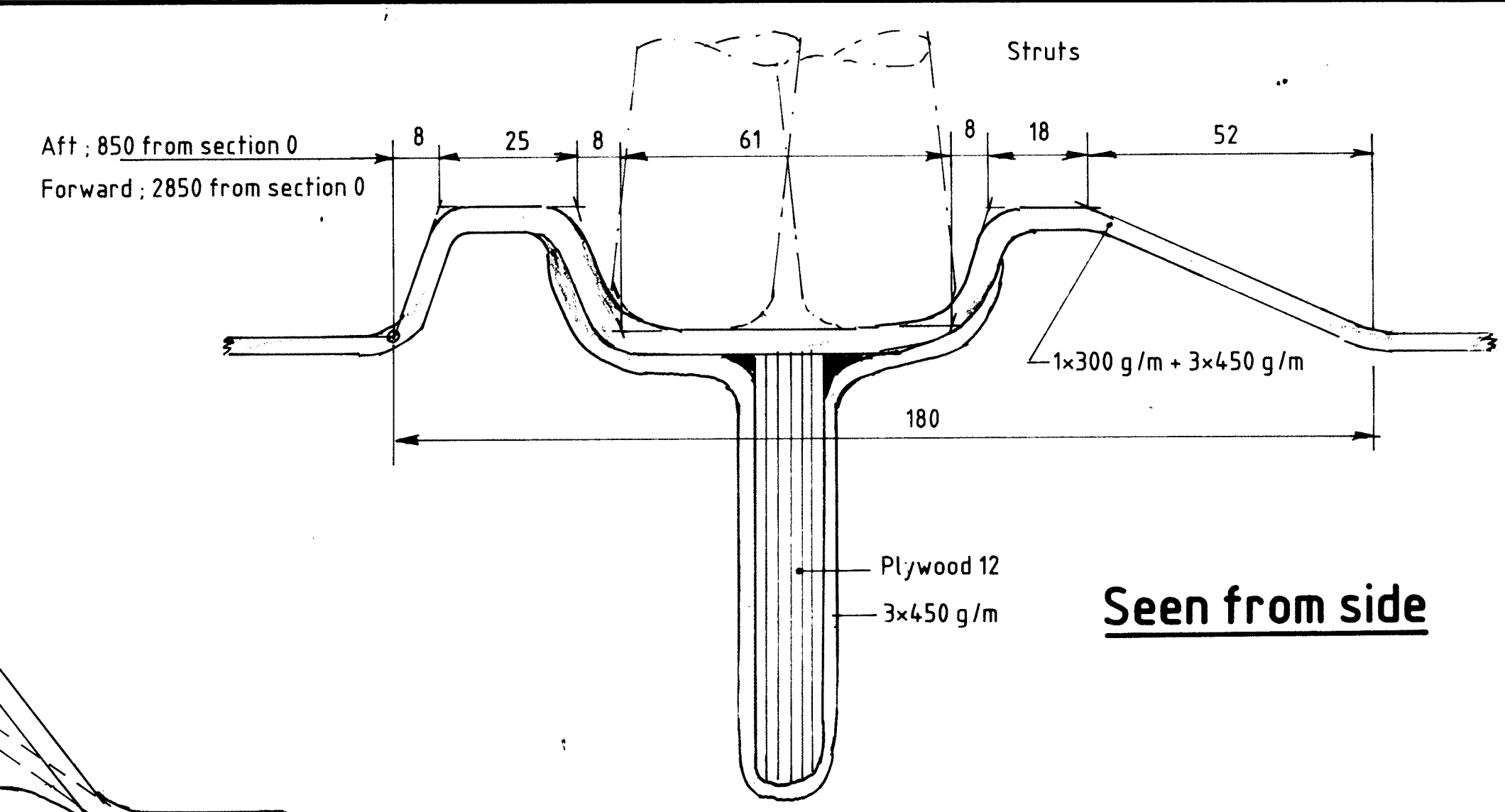
DESIGN: S. G. G. G.  
Grimstad, Sept. 1991

VAN-2

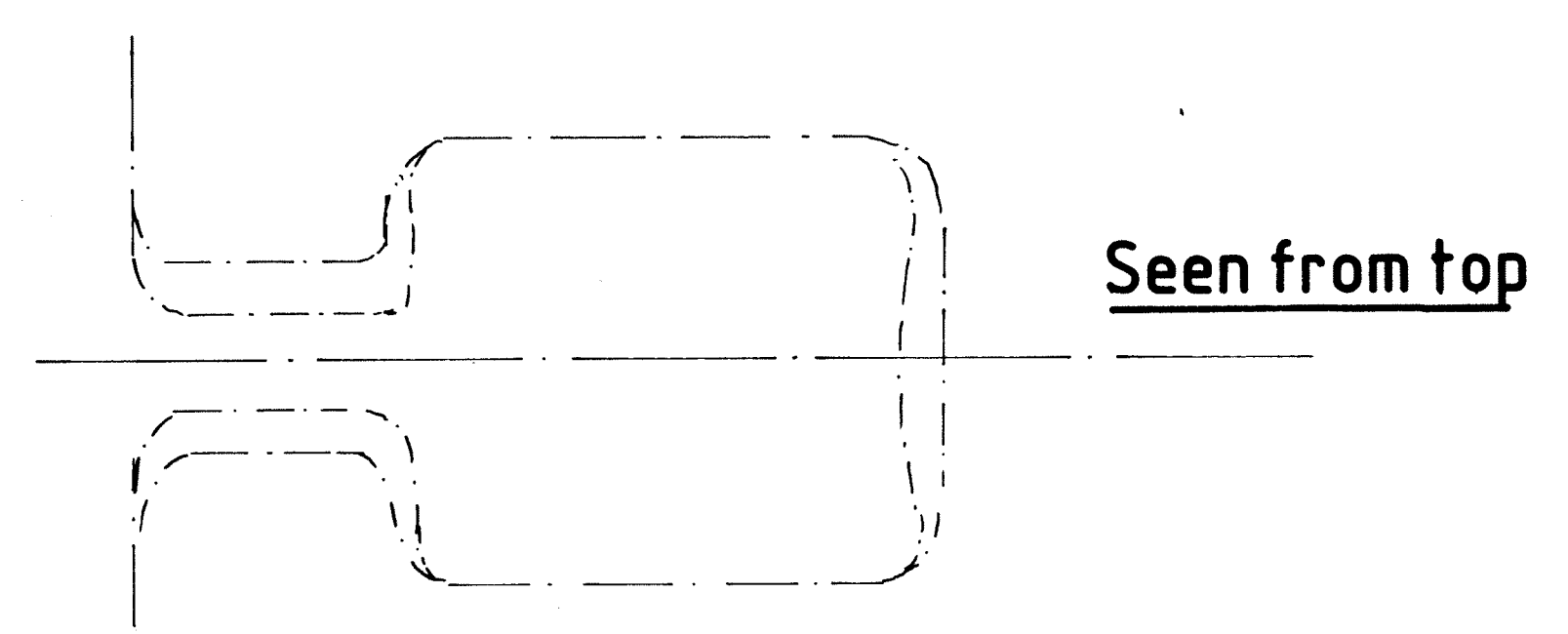
4



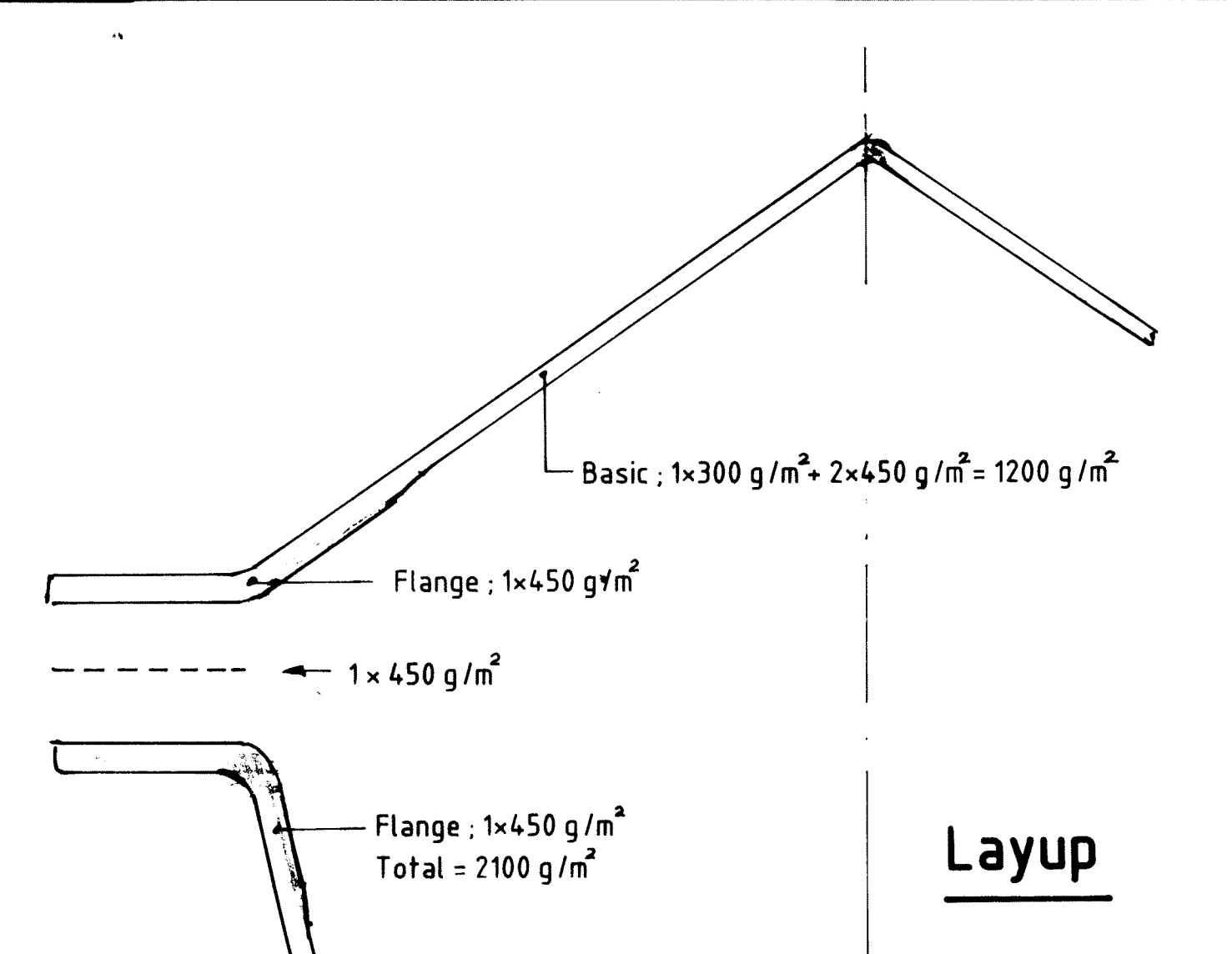
**Strut support 2**  
1:1



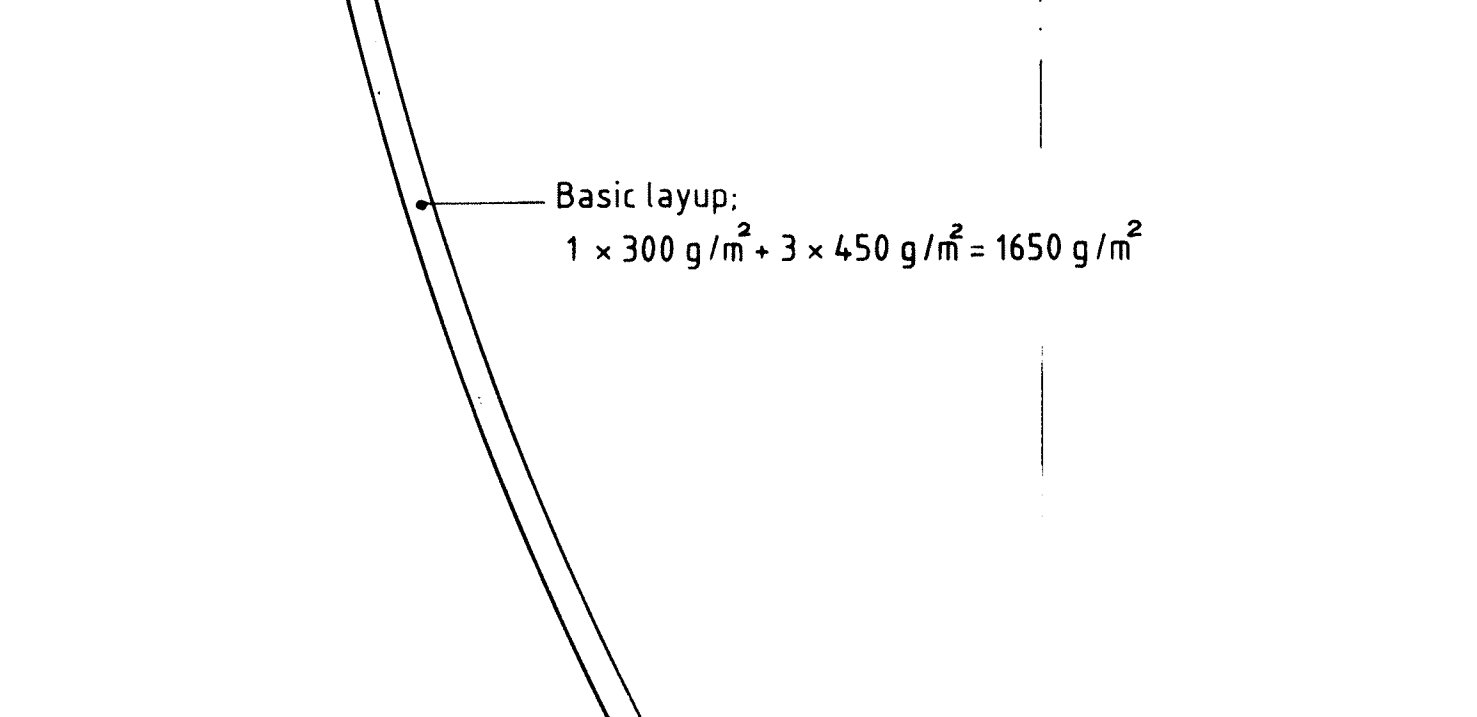
**Seen from side**



**Seen from top**

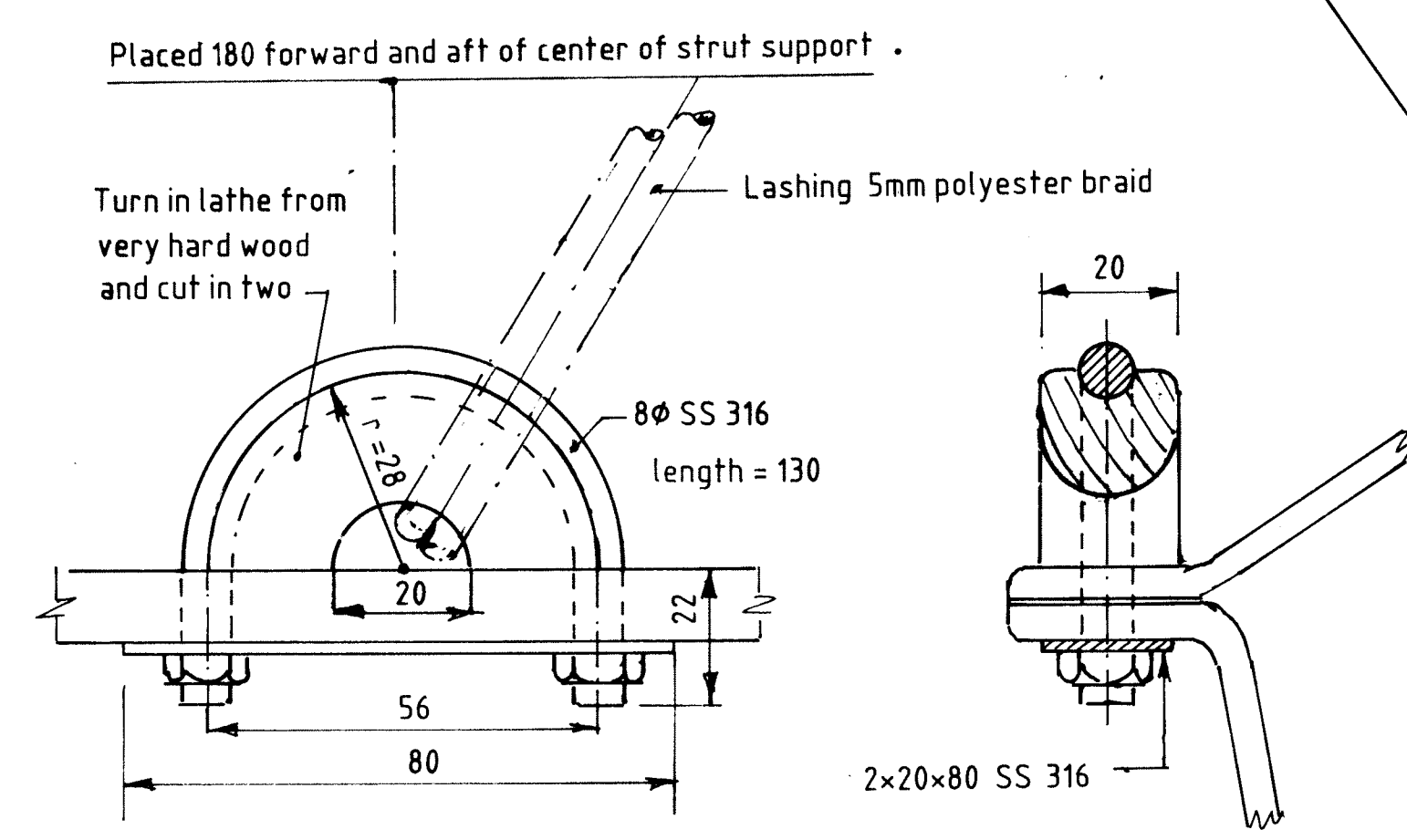
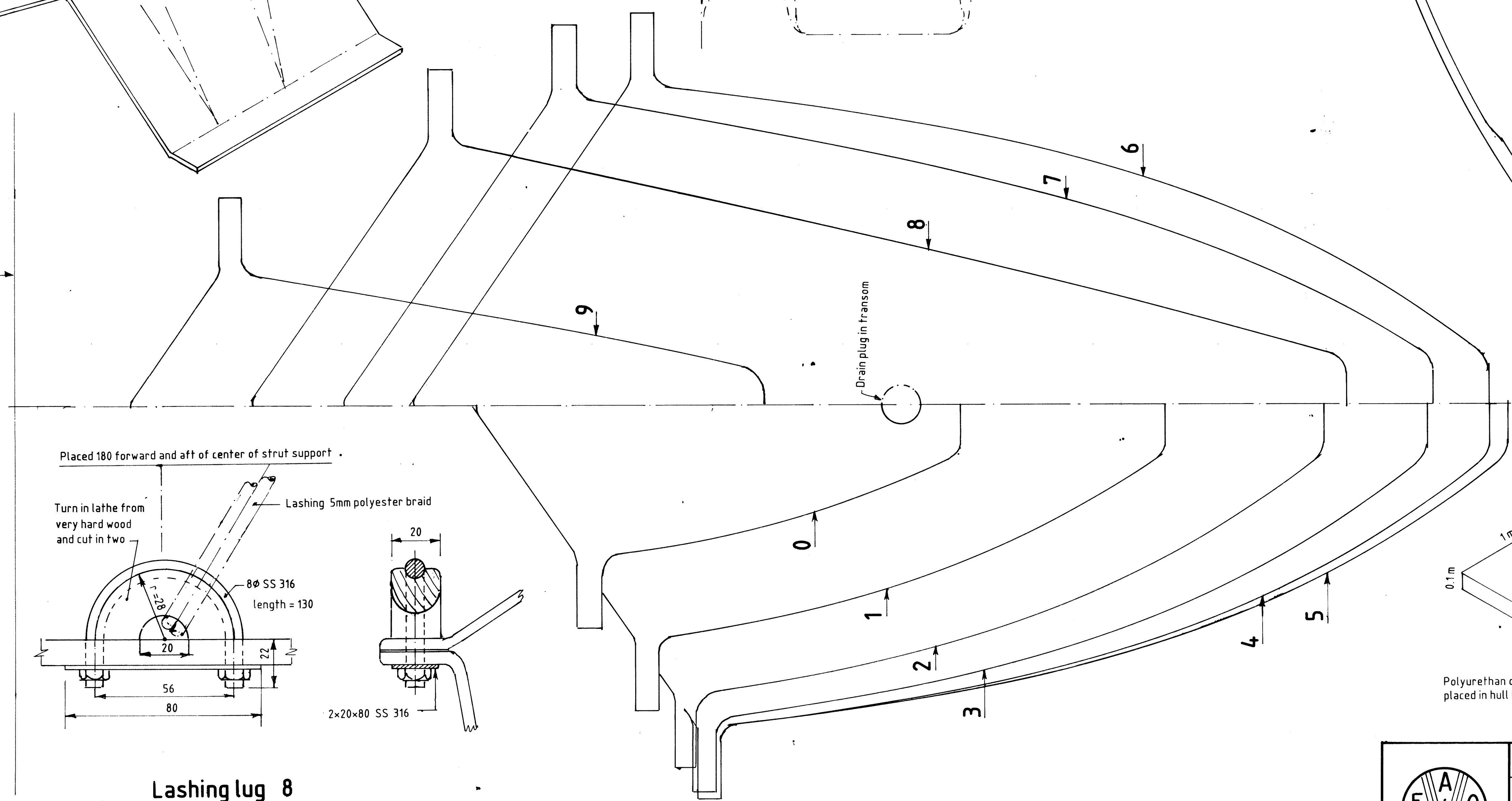


**Layup**

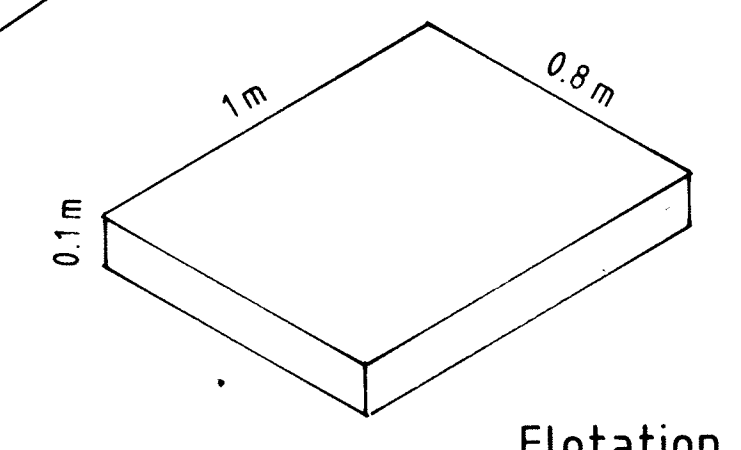


**Keel reinforcement:**  
2x450 g/m² Total = 2550 g/m²

5-6 mm layer of sand (preferably crushed rock sand) mixed with resin, placed in the mould before application of the gelcoat.  
From section 2 to section 7




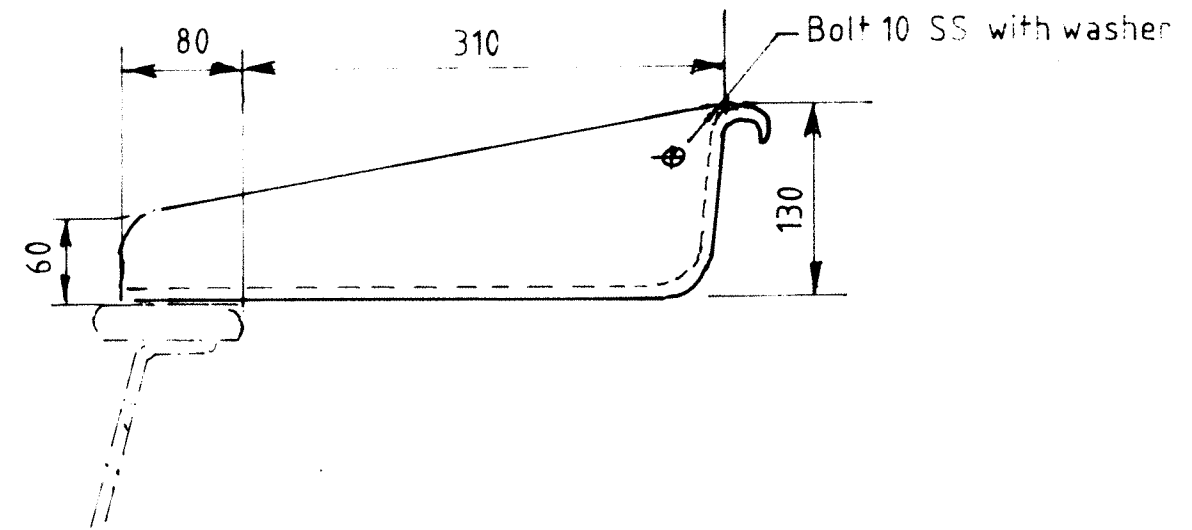
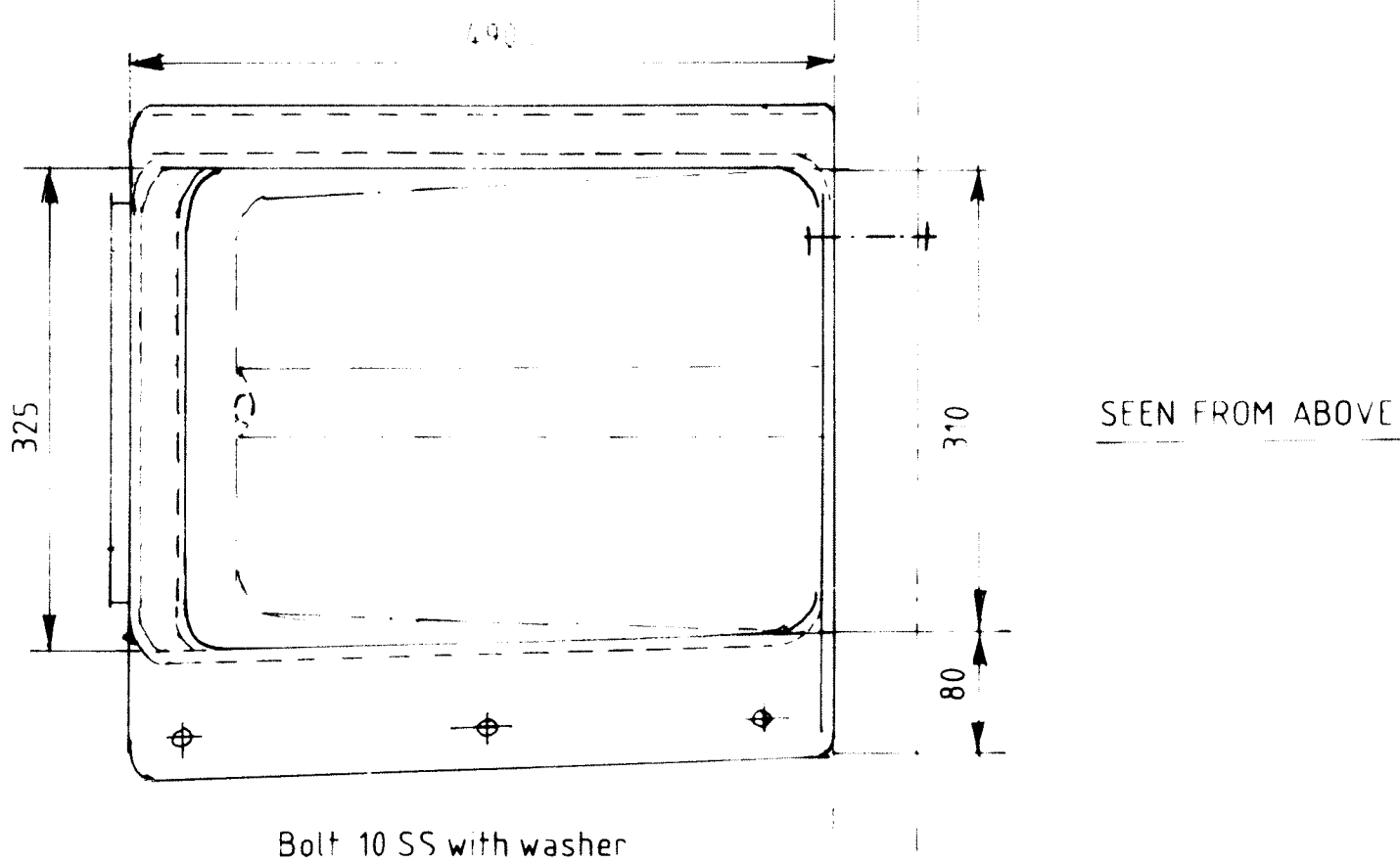
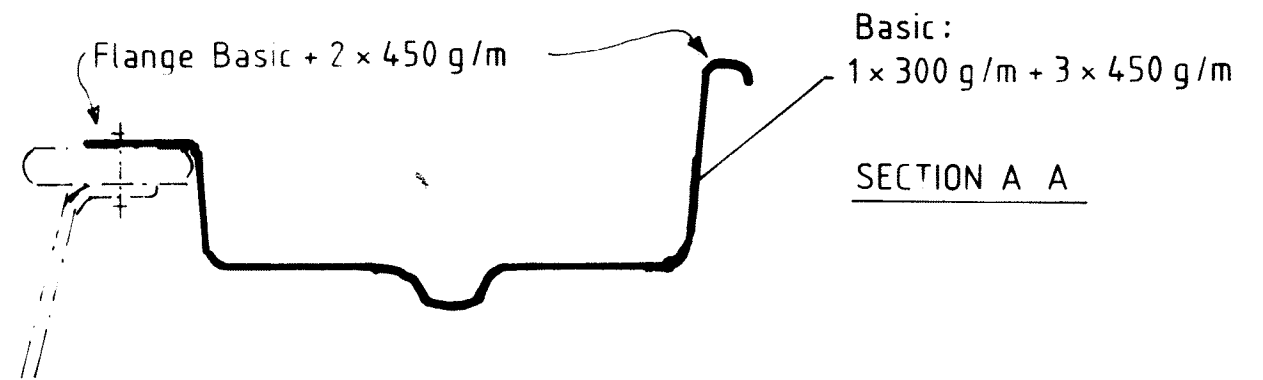
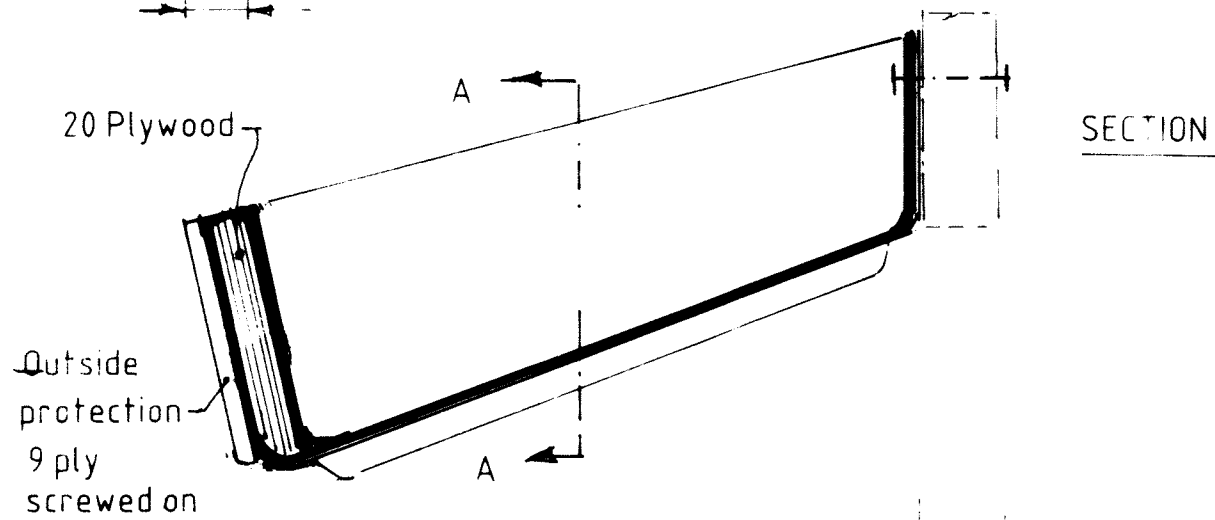
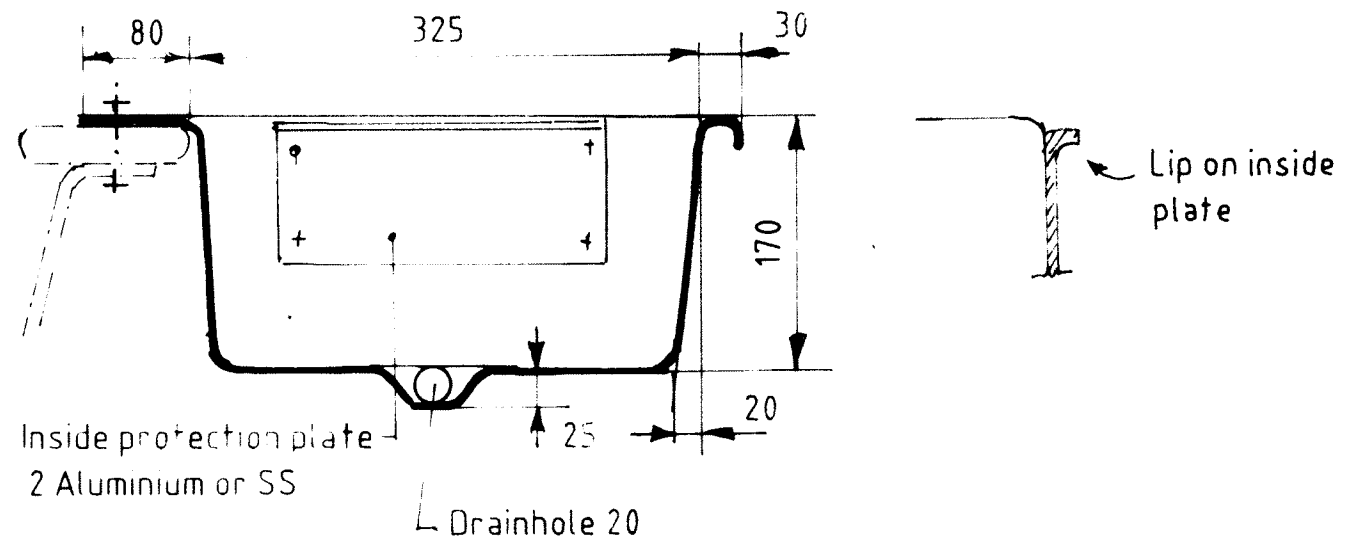
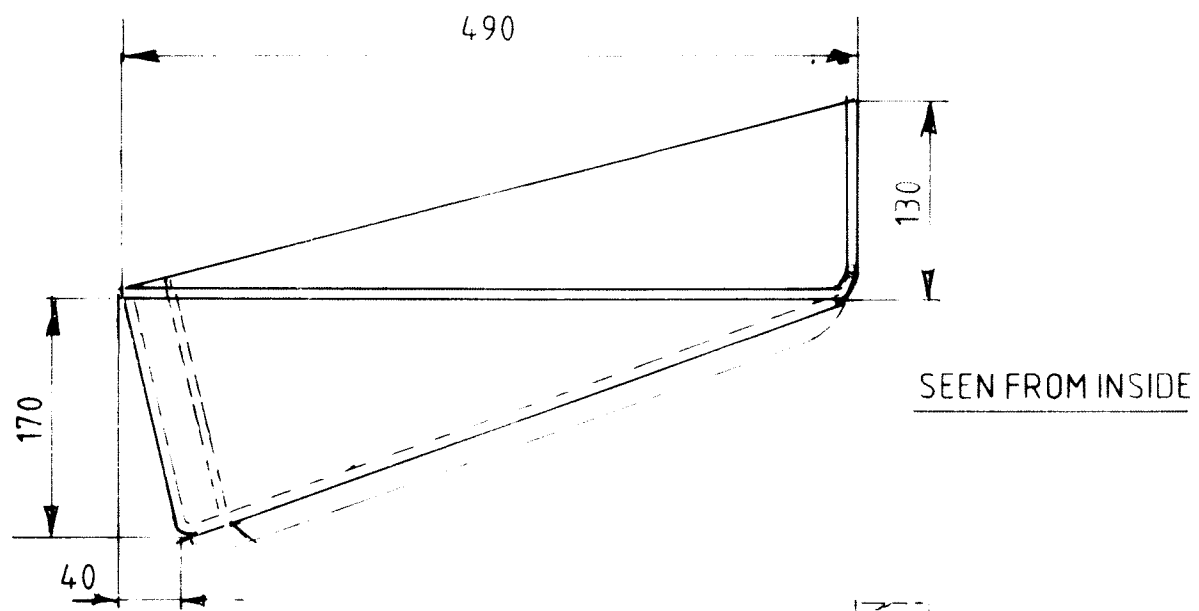
**Lashing lug 8**



**Flotation**

Polyurethan or polystyrene foam blocks total = 0.8 m<sup>3</sup> placed in hull before fixing lid

 FAO PARIS	<b>7.1m Outrigger Canoe</b>		
	<b>OUTRIGGER</b>		
	SCALE = 1 : 1	DESIGN NO.	DRAWING NO.
DESIGN : <i>Ø. Gullbrautsson</i> Grimstad, Sept. 1991	<b>VAN - 2</b>	<b>5</b>	



## 7.1 m Outrigger Canoe ENGINE BRACKET

SCALE = 1 : 5

DESIGN NO.

DRAWING NO.

DESIGN : *Ø. Gullbrandsen*

**VAN - 2**

**6**

Grimstad , Sept. , 1991