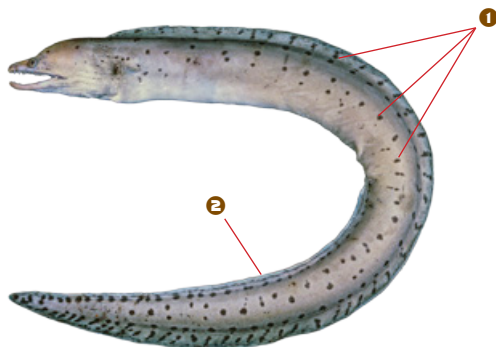


Fimbriated moray

Pale grey-brown with highly variable patterns of well separated **1** dark brown blotches. **2** Margins of fins pale.

Max length: 80 cm TL

AS	CK	FJ	FM	GU	KI
MH	MP	NC	NR	NU	PF
PG	PN	PW	SB	TK	TO
TV	VU	WF	WS		

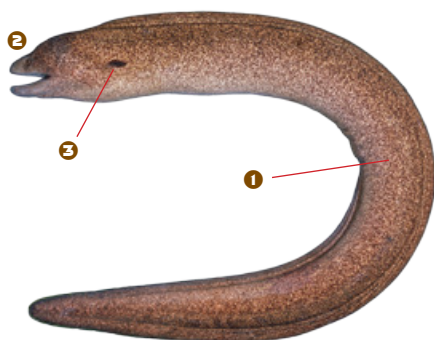


Yellow-edged moray

Pale yellow body **1** densely mottled with dark brown. **2** Snout and front of lower jaw purplish-brown. **3** Black spot on gill openings.

Max length: 150 cm TL

AS	CK	FJ	FM	GU	KI
MH	MP	NC	NR	NU	PF
PG	PN	PW	SB	TK	TO
TV	VU	WF	WS		



Giant moray

Brown with irregular **1** dark brown blotches and **2** numerous small dark brown spots on head, body and fins. **3** Black spot on gill openings.

Max length: 250 cm TL

AS	CK	FJ	FM	GU	KI
MH	MP	NC	NR	NU	PF
PG	PN	PW	SB	TK	TO
TV	VU	WF	WS		

