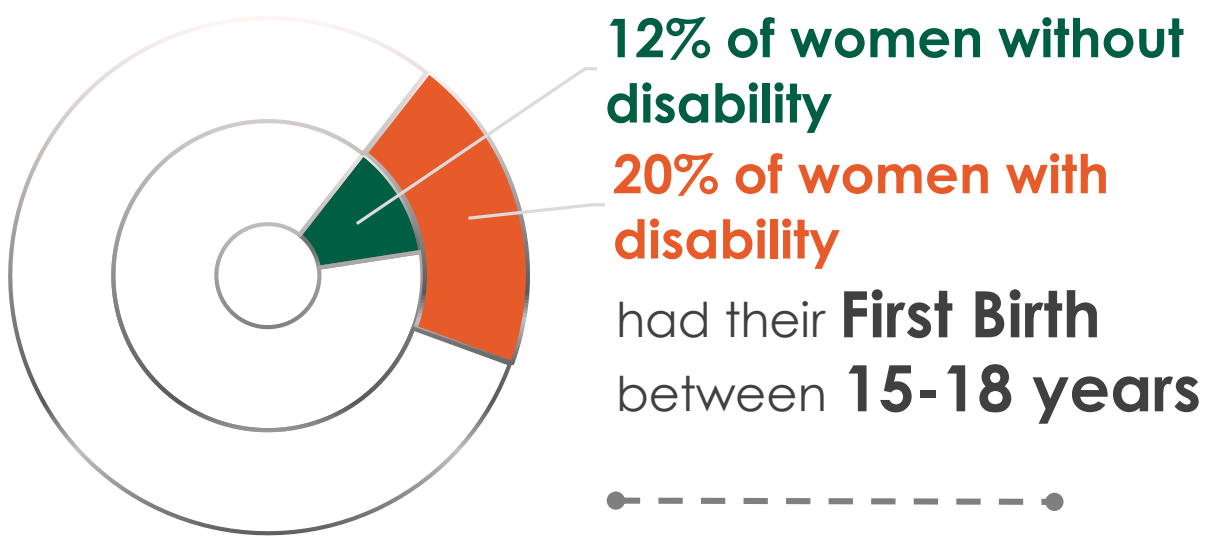


Reproductive Health & Disability Status for Women

Age at First Birth



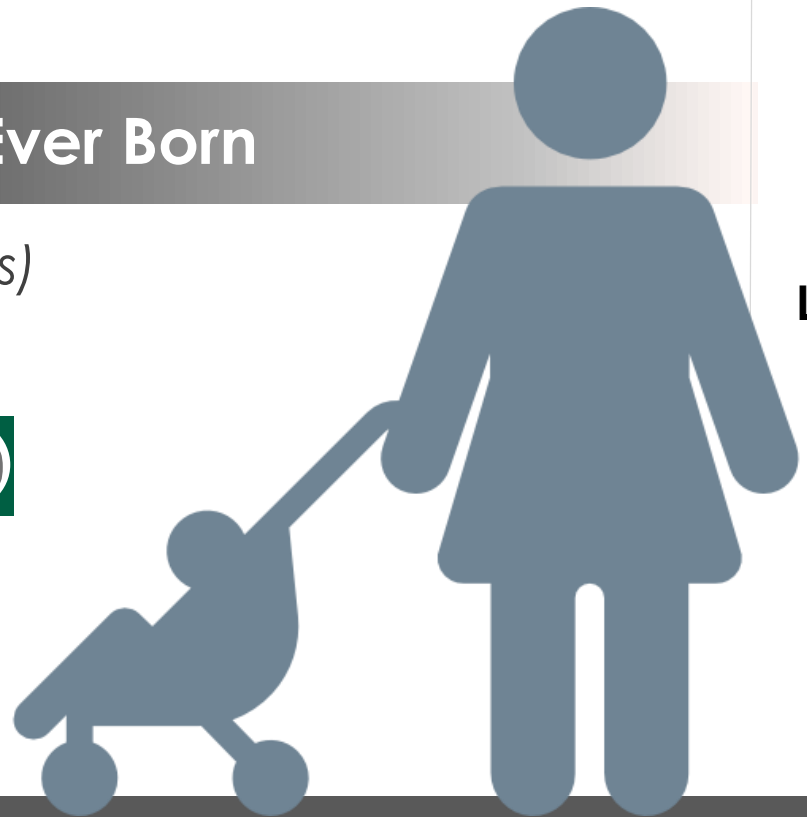
Median Age of First Birth
All women 15-49 years **22 Years**

Average Children Ever Born

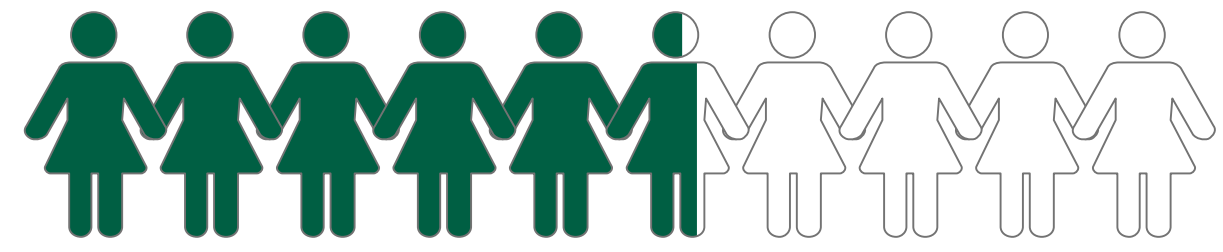
To women (15-49 years)
without disability



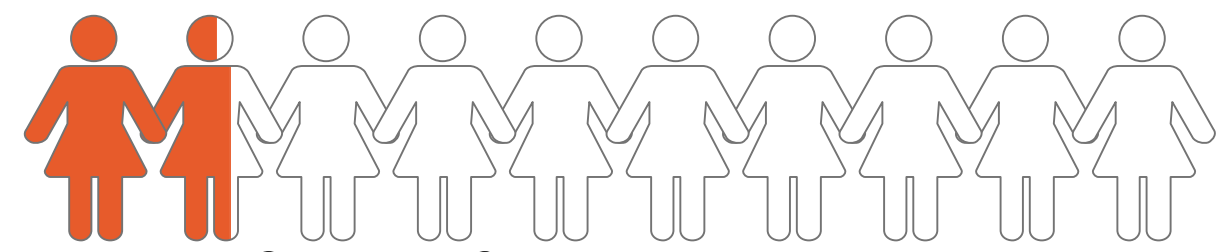
with disability



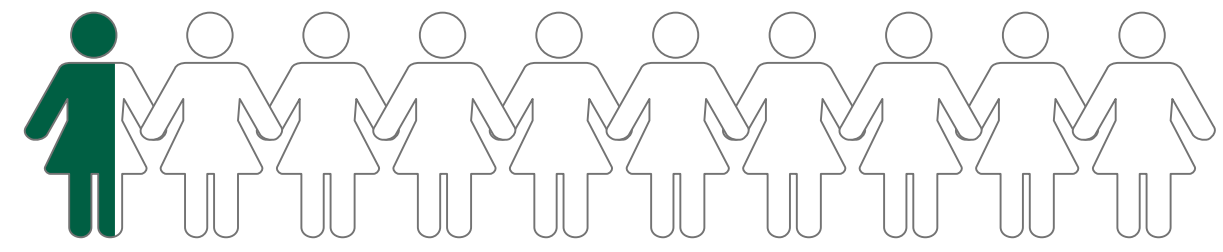
Marital Status



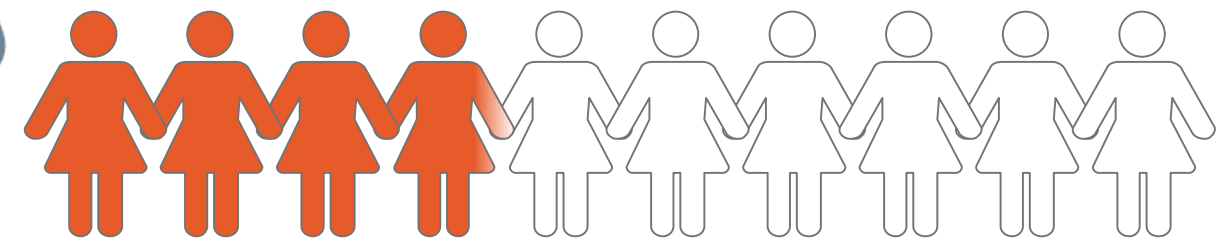
Around 6 out of **10** women **without** disability are married



More than 2 out of **10** women **with** disability are married



Less than 1 out of **10** women **without** disability are either widowed, divorced or separated



Around 4 out of **10** women **with** disability are either widowed, divorced or separated