



**SCIENTIFIC COMMITTEE  
SECOND REGULAR SESSION**

7-18 August 2006  
Manila, Philippines

---

**COMPARISON OF CIRCLE HOOKS AND J HOOKS IN THE CATCH RATE OF  
TARGET AND BYCATCH SPECIES TAKEN IN THE KOREAN TUNA LONGLINE  
FISHERY**

---

**WCPFC-SC2-2006/EB WP-12**

Paper prepared by

Soon-Song Kim, Dae-Yeon Moon, Doo-Hae An and Jeong-Rack Koh.

National Fisheries Research and Development Institute  
Republic of Korea

# **Comparison of circle hook and J hook catch rate for target and bycatch species taken in the Korean tuna longline fishery**

Soon-Song Kim, Dae-Yeon Moon, Christofer Boggs , Doo-Hae An and Jeong-Rack Koh,  
National Fisheries Research and Development Institute (NFRDI), Republic of Korea  
Pacific Islands Fisheries Science Center, NOAA, USA

NFRDI conducted a circle hook experiment in the tuna longline fishery of the eastern Pacific Ocean during the summer 2005. The purpose of this experiment was to compare the catch rates of target and bycatch species between J hook and circle hooks. For this experiment two scientists were deployed to one Korean longliner (411 GRT) fishing in the eastern Pacific Ocean between 1°48'S~7°00'S and 142°00' ~149°13'W from July 15 to August 12, 2005. In the target species group no significant differences among 3 types hook, between size 4.0 traditional tuna hooks (J-4) and size 15 circle hooks (C15), and between C15 and size 18 circle hooks (C18) were revealed , but significant differences were found between J-4 and C18. In the bycatch species group significant differences were found among 3 types hook, between J 4 and C15, and between J-4 and C18, but no significant differences were revealed between C15 and C18. Large circle hook (C18) had the lowest catch rate for tunas and for other fishes, and the small circle hook (C15) had lowest rate for billfishes and sharks. The length distributions for bigeye tuna are very similar for the 3 hook types. There were very slight differences in length size between hook types in the bycatch species.

## **Fishing method and hooks used**

During the 29 days of the experiment, a total of 21 longline sets (one set per day) in the eastern Pacific (Fig. 1) were monitored. The fishing boat operations targeted on bigeye tuna and the main fishing depth ranged from 140 to 300m. The hooks were of

3 different types: size 4.0 traditional tuna hooks (J-4), and two sizes (C15, C18) of circle hook with non-offset (Fig. 2). The number of hooks used for each set was 2,100 (700 of each type). The hooks were set in the order of J 4 - C15 - C18 – J 4 - C15 - C18....., sequentially.

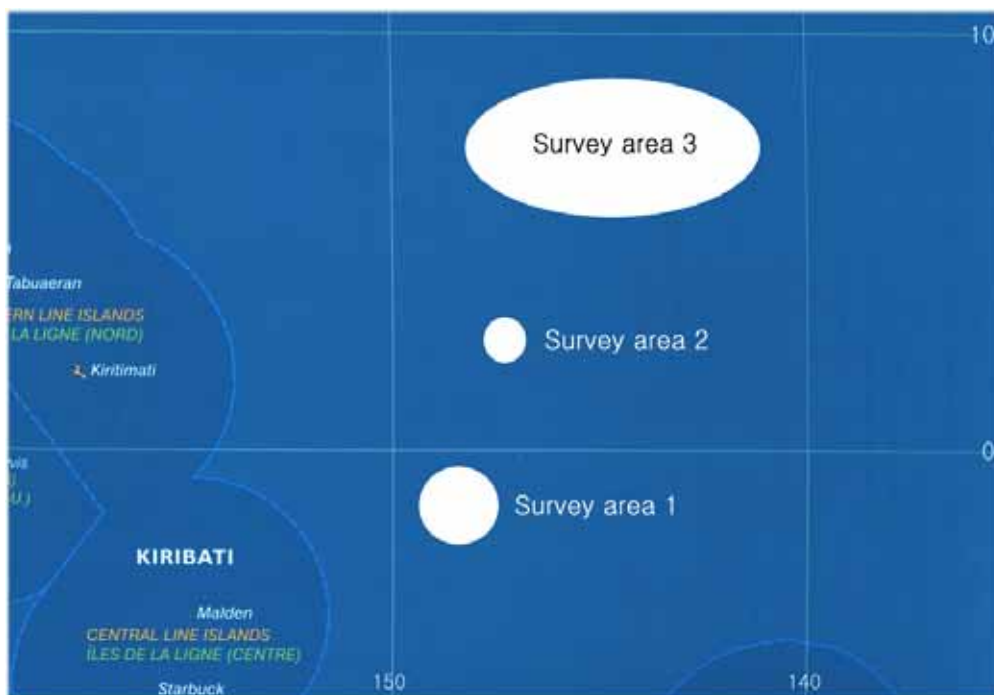


Figure 1. The survey area for circle hook experiment in the eastern Pacific.

Area 1: St. 1~6, Area 2: St. 7, Area 3: St. 8~21



Figure 2. One type (J-4) of traditional tuna hook and two types (C15, C18) of circle hook.

Longline setting began at around 8:00 am in the morning and finished by 1:30 pm. After about 3 hours of soaking, the longline sets were hauled, continuing until the following early morning and finishing by 7:00 am. Twenty haulings were started at the finished point of setting while one hauling was started at the other end (the starting point of setting). A total of 44,100 hooks were set in the experiment.

The number of hooks between two floats was 17. Mean length of main line was 135 km. The baits were sardine, jack mackerel, squid, herring, chub mackerel and milk fish.

### Catch in number by species and hook type

The catches (in number of fish) taken on 44,100 hooks were 442 tunas and billfishes; bigeye tuna was the dominant tuna species accounting for 272 fish (61.5% of the tuna and billfish total), followed by yellowfin tuna at 107 fish (24.2%), and incidental catches of albacore and skipjack (Table 1-1). Incidentally caught billfish were

Table 1-1. Catches in number of tunas and billfishes by hook type.

Figures in parenthesis denote the percentage of each species

| Species             | Hook type   |            |            |            |
|---------------------|-------------|------------|------------|------------|
|                     | Total (%)   | J4         | C15        | C18        |
| Bigeye tuna         | 272 (61.5)  | 103        | 92         | 77         |
| Yellowfin tuna      | 107 (24.2)  | 38         | 44         | 25         |
| Albacore            | 8 ( 1.8)    | 1          | 3          | 4          |
| Skipjack            | 2 ( 0.5)    | 1          | 1          | -          |
| Swordfish           | 23 ( 5.2)   | 11         | 6          | 6          |
| Blue marlin         | 21 ( 4.8)   | 7          | 6          | 8          |
| Striped marlin      | 6 ( 1.4)    | 1          | 3          | 2          |
| Shortbill spearfish | 2 ( 0.5)    | 1          | -          | 1          |
| Sailfish            | 1 ( 0.2)    | -          | -          | 1          |
| Total               | 442 (100.0) | 163 (36.9) | 155 (35.1) | 124 (28.0) |

swordfish (5.2%), blue marlin (4.8%) striped marlin (1.4%), shortbill spearfish (0.5%) and sailfish (0.2%). The total number of tunas and billfishes taken on J-4 hooks was 163 fish (36.9% of the tuna and billfish total). A total of 155 tuna and

billfish (35.1%) were caught on C15 hooks, and 124 (28.0%) were caught on C18 hooks. Among the 272 bigeye tuna, those taken on J-4 hooks numbered 103. A total of 92 bigeye tuna were taken on C15 hooks, and 77 were taken on C18 hooks. Of the 107 yellowfin tuna, 38 were taken on J-4 hooks, 44 were taken on C15 hooks, and 25 were taken on C18 hooks.

A total of 18 bycatch species (296 in number) were observed during the experiment, among which sharks (49.7%), longnose lancetfish (22.6%), pomfrets (12.2%) and escolar (6.1%) were most common. Some other fish species were also observed (Table 1-2), especially 9 kinds of incidentally caught sharks. Of the sharks, bigeye thresher shark, salmon shark, velvet dogfish and blue shark were most common. Total fish bycatch numbered 119 fish (40.2%) taken on J-4 hooks, 91 fish (30.7%) taken on C15 and 86 fish (29.1%) taken on C18 hooks.

Table 1-2. Catches in number of sharks and other species by hook type. Figures in parenthesis denote the percentage of each species

| Species                    | Hook type  |    |     |     |
|----------------------------|------------|----|-----|-----|
|                            | Total (%)  | J4 | C15 | C18 |
| Salmon shark               | 33 (11.1)  | 13 | 14  | 6   |
| Oceanic white-tip shark    | 14 ( 4.8 ) | 6  | 2   | 6   |
| Bigeye thresher shark      | 35 (12.8)  | 16 | 7   | 12  |
| Blue shark                 | 25 ( 8.4)  | 10 | 9   | 6   |
| Mako shark                 | 1 ( 0.3)   | 1  | -   | -   |
| Crocodile shark            | 7 ( 2.4)   | 4  | 1   | 2   |
| Velvet dogfish             | 29 ( 9.8)  | 12 | 7   | 10  |
| Scalloped hammerhead shark | 1 ( 0.3)   | 1  | -   | -   |
| Smooth hammerhead shark    | 2 ( 0.7)   | 1  | 1   | -   |
| Palagic stingray           | 7 ( 2.4)   | 2  | 4   | 1   |
| Manta ray                  | 1 ( 0.3)   | -  | 1   | -   |
| Wahoo                      | 8 ( 2.7)   | 2  | 4   | 2   |
| Dolphin fish               | 4 ( 1.4)   | 1  | 1   | 2   |
| Escolar                    | 18 ( 6.1)  | 4  | 7   | 7   |
| Oilfish                    | 5 ( 1.7)   | 4  | 1   | -   |
| Longnose lancetfish        | 67 (22.6)  | 25 | 22  | 20  |
| Pomfrets                   | 36 (12.2)  | 14 | 10  | 12  |

|                         |              |            |           |           |
|-------------------------|--------------|------------|-----------|-----------|
| Olive ridley sea turtle | 3 ( 1.0)     | 3          | -         | -         |
| Total                   | 296 (100.0 ) | 119 (40.2) | 91 (30.7) | 86 (29.1) |

In this experiment period 3 olive ridley sea turtles were observed taken during the time the fishing gear was being hauled. Incidental catch information for these turtles are shown in Table 2. After their body measurements were taken we immediately released them to sea.

Table 2. Incidental catch information on turtles taken in the circle hook experiment by the Korean tuna longliner in the eastern Pacific Ocean during summer 2005. Hook no. denotes the setting order position of the hook between two floats

| Species                 | Date     | Location             | Carapace (cm) | Hook type<br>Hook no.      | Portion entangled    | Condition |
|-------------------------|----------|----------------------|---------------|----------------------------|----------------------|-----------|
| Olive ridley sea turtle | 28 July  | 6° 7 N<br>144° 46 W  | 63            | J 4<br>(2 <sup>nd</sup> )  | front flipper (left) | Dead      |
| Olive ridley sea turtle | 1 August | 5° 43 N<br>142° 38 W | 64            | J 4<br>(17 <sup>th</sup> ) | front flipper (left) | Alive     |
| Olive ridley sea turtle | 5 August | 6° 55 N<br>143° 2 W  | 33            | J 4<br>(1 <sup>st</sup> )  | front flipper (left) | Alive     |

### Test for differences in catches by hook type

Differences in catch in number among three and between two hook types in the same species group were detected using a chi-square ( $\chi^2$ ) test for significant differences. The results for each pair of hook types are shown in Table 3.

In the target species group no significant differences among 3 types hook, between J-4 and C15, and between C15 and C18 were revealed, but significant differences were found between J-4 and C18. In the bycatch species group significant differences were found among 3 types hook, between J-4 and C15, and between J-4 and C18, but no significant differences were revealed between C15 and C18.

Table 3. Catch in numbers by hook type and the  $\chi^2$  - test for significant differences in catch frequency among and between hook types for the target (tunas and billfish) and bycatch (sharks and others) species groups, NS : non significant ( $P>0.05$ ), S : significant ( $P<0.05$ ).

| Species group   | Hook type |     |     | Among and Between | P value | $\chi^2$ value | Conclusion |
|-----------------|-----------|-----|-----|-------------------|---------|----------------|------------|
|                 | J 4       | C15 | C18 |                   |         |                |            |
| Target species  | 163       | 155 | 124 | J 4, C15, C18     | 0.06    | 5.76           | NS         |
|                 |           |     |     | J 4 and C15       | 0.65    | 0.20           | NS         |
|                 |           |     |     | J 4 and C18       | 0.02    | 5.30           | <b>S</b>   |
|                 |           |     |     | C15 and C18       | 0.06    | 3.44           | NS         |
| Bycatch species | 119       | 91  | 86  | J 4, C15, C18     | 0.04    | 6.41           | <b>S</b>   |
|                 |           |     |     | J 4 and C15       | 0.02    | 5.30           | <b>S</b>   |
|                 |           |     |     | J 4 and C18       | 0.02    | 5.31           | <b>S</b>   |
|                 |           |     |     | C15 and C18       | 0.71    | 0.14           | NS         |

### Catch rate of species by hook type

Table 4 shows the catch rates for each species in a comparative way. Traditional tuna hooks (J-4) had a catch rate for all species that was 15% higher than for small size circle hooks (C15) and 34% higher than for large size circle hooks (C18). For the tunas group, J-4 hooks had a catch rate that was 2% higher than for C15 hooks and 35% higher than for C18 hooks. For the billfishes group the catch rate of J-4 hooks was 40% higher than for C15 hooks and 17% higher than for C18 hooks. Also, for the sharks group the catch rate of J-4 hooks was 52~57% higher than for C15 and C18 hooks, respectively. The consequence was that large circle hooks (C18) had the lowest catch rate for tunas and for other fishes, and the small circle hook (C15) had lowest rate

for billfishes and sharks.

Table 4. Catch rate (CPUE) of main species caught by hook type

| Species                        | Hooks used<br>by hook type | CPUE (fishes/1,000hooks) |             |             |
|--------------------------------|----------------------------|--------------------------|-------------|-------------|
|                                |                            | J 4                      | C15         | C18         |
| Bigeye tuna                    | 14,700                     | 6.9                      | 6.3         | 5.2         |
| Yellowfin tuna                 | "                          | 2.6                      | 3.0         | 1.7         |
| <b>Tunas group</b>             | "                          | <b>9.7</b>               | <b>9.5</b>  | <b>7.2</b>  |
| Swordfish                      | "                          | 0.7                      | 0.4         | 0.4         |
| Blue marlin                    | "                          | 0.5                      | 0.4         | 0.5         |
| <b>Billfishes group</b>        | "                          | <b>1.4</b>               | <b>1.0</b>  | <b>1.2</b>  |
| Salmon shark                   | "                          | 1.0                      | 0.4         | 1.0         |
| Oceanic white-tip shark        | "                          | 0.4                      | 0.1         | 0.4         |
| Bigeye thresher shark          | "                          | 1.1                      | 0.5         | 0.8         |
| Blue shark                     | "                          | 0.7                      | 0.6         | 0.4         |
| Velvet dogfish                 | "                          | 0.8                      | 0.5         | 0.5         |
| <b>Sharks group</b>            | "                          | <b>4.4</b>               | <b>2.8</b>  | <b>2.9</b>  |
| Escolar                        | "                          | 0.3                      | 0.5         | 0.5         |
| Longnose lancetfish            | "                          | 1.7                      | 1.5         | 1.2         |
| Pomfrets                       | "                          | 1.0                      | 0.7         | 0.8         |
| <b>Other fishes group</b>      | "                          | <b>3.5</b>               | <b>3.4</b>  | <b>3.0</b>  |
| <b>Olive ridley sea turtle</b> | "                          | <b>0.2</b>               | -           | -           |
| <b>Total</b>                   | <b>14,700</b>              | <b>19.2</b>              | <b>16.7</b> | <b>14.3</b> |

### Length composition of catches by hook type

Length frequency data for all species caught by the 3 types of hook were collected. The fork length of bigeye tuna ranged from 64 cm to 197 cm (mean 134.5 cm), that of bigeye tuna caught by J-4 hooks ranged from 64 cm to 196 cm (mean 132.2 cm), that by C15 hooks ranged from 70 cm to 197 cm (mean 137.5 cm) and that by C18 ranged from 69cm to 191cm (mean 133.7cm). Therefore, the length distributions for bigeye tuna are very similar for the 3 hook types as shown in Figure 3-1.



The fork length of yellowfin tuna ranged from 67 cm to 169 cm (mean 124.2 cm), that of yellowfin tuna caught by J-4 hooks ranged from 67 cm to 155cm (mean 124.4 cm), that by C15 hooks ranged from 68 cm to 163 cm (mean 126.6 cm) and that by C18 hooks ranged from 71 cm to 169 cm (mean 120.0 cm) (Fig. 3-2). Therefore, yellowfin tuna caught by C18 hooks had slightly smaller length, in spite of the larger hook size, compared with the J-4 and C15 hook.

Length frequency data for billfishes, sharks and other species were compared between the 3 types hook (Fig 3-3 and 3-4). The sizes of swordfish caught by C15 hooks were larger than those for J-4 and C18 hooks, but blue marlin sizes for C15 hooks were smaller. In sharks the range of lengths for J-4 hooks were wider than for circle hooks (C15, C18), but those of the other fishes were not. The sizes of lancetfishes caught by circle hooks were larger than those for J-4 hooks, but there were no differences in sizes between hook types in the rest of the species shown in Fig.3-4.

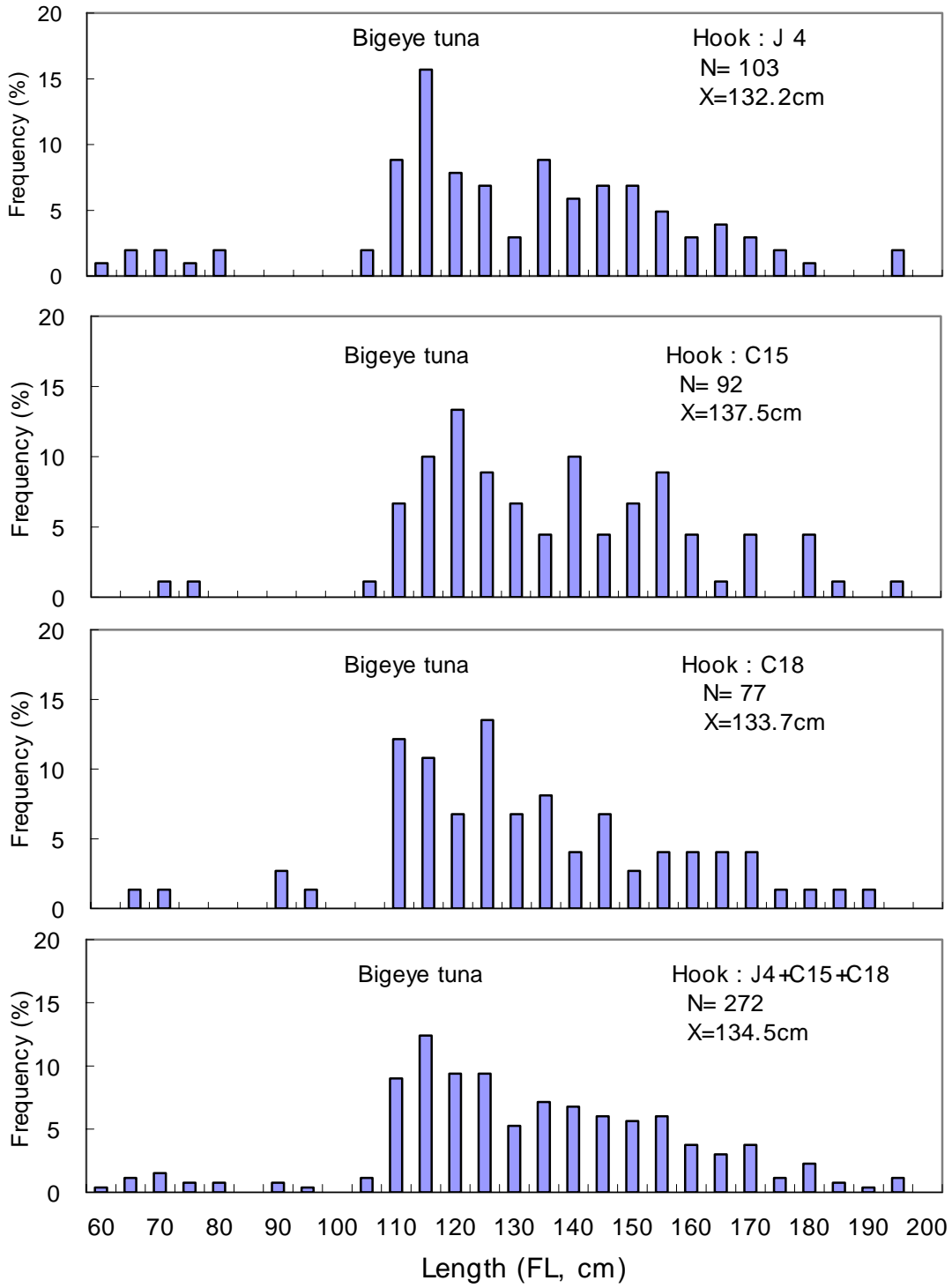


Figure 3-1. Length frequencies of bigeye tuna by hook type.

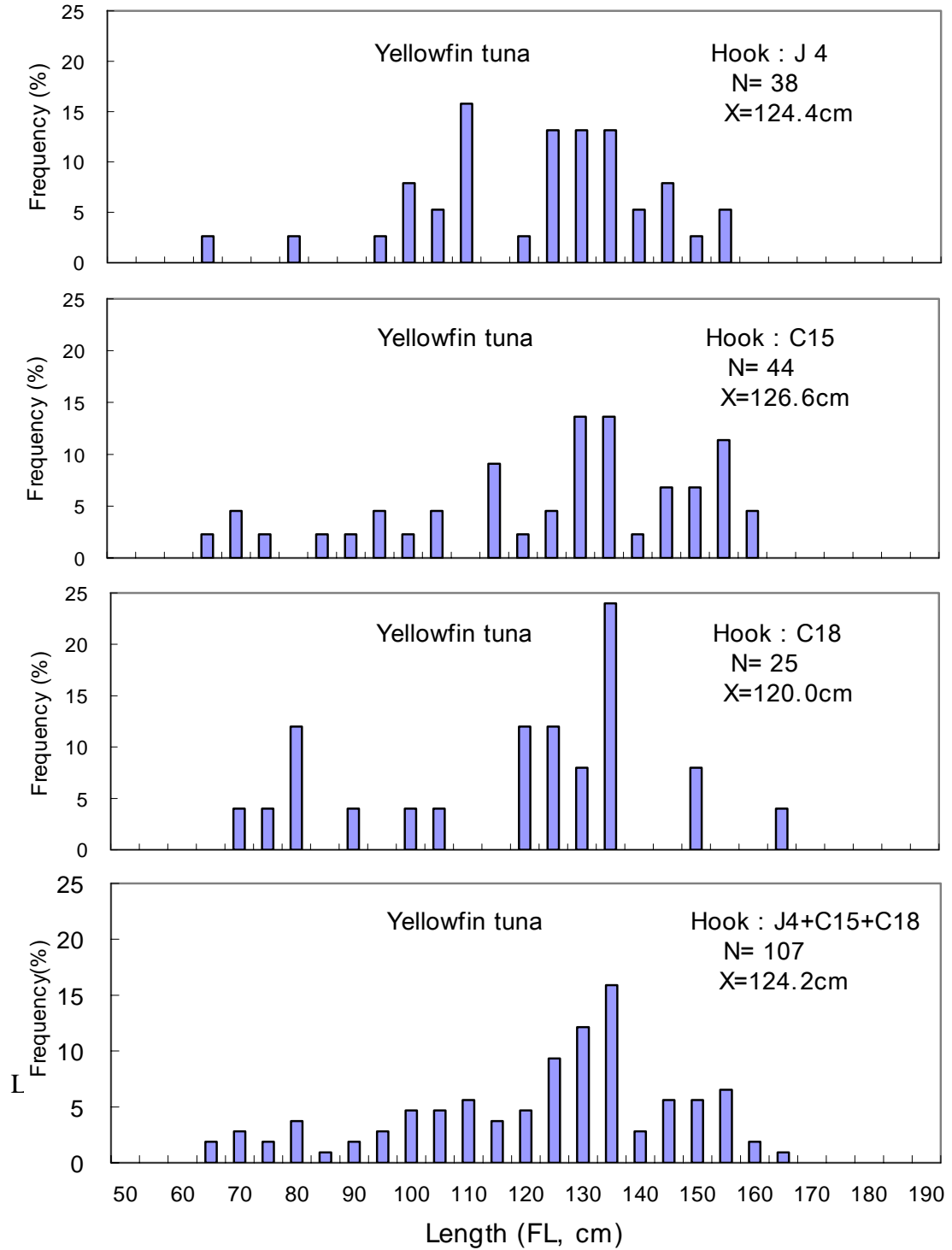


Figure 3-2. Length frequencies of yellowfin tuna by hook type.

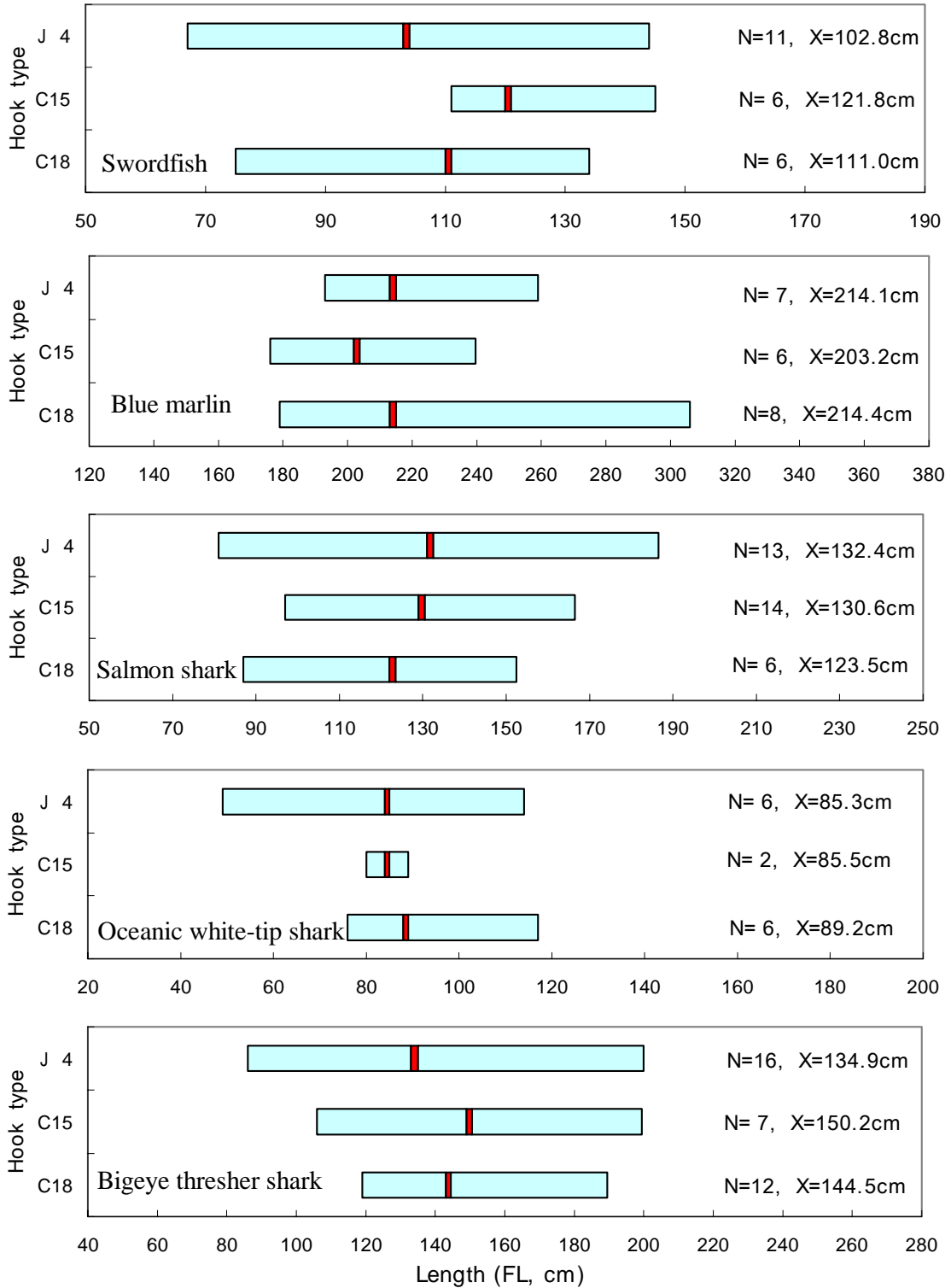


Figure 3-3. Ranges and means of billfishes and sharks lengths by hook type, (length range : open bar, mean length : filled bar).

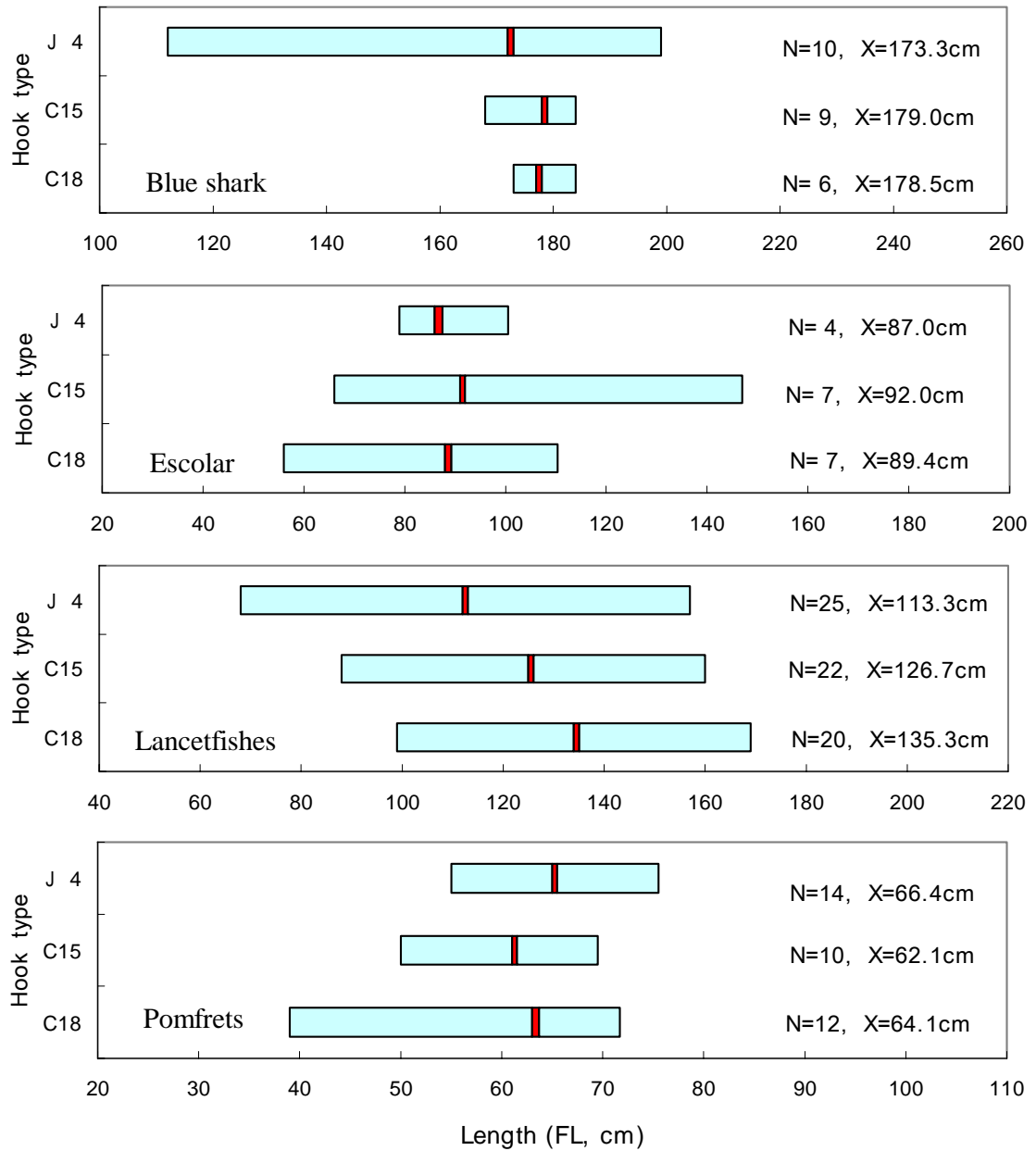


Figure 3-4. Ranges and means of blue shark and other species lengths by hook type, (length range : open bar, mean length : filled bar).