

# Improve navigation safety



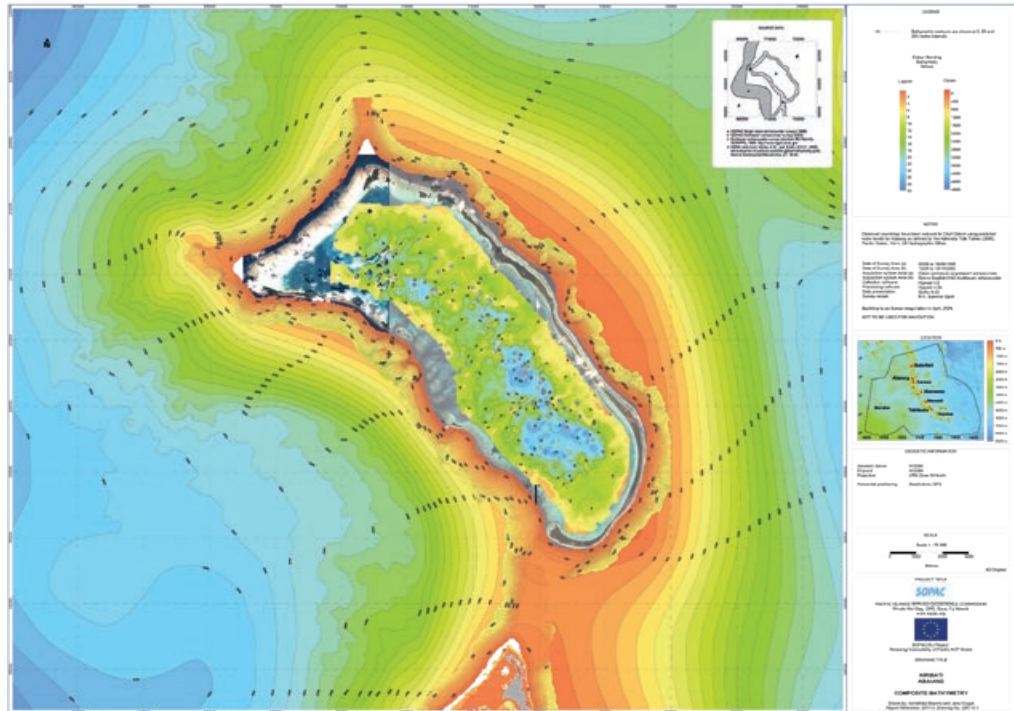
Following country agenda

## Implementing bathymetry surveys

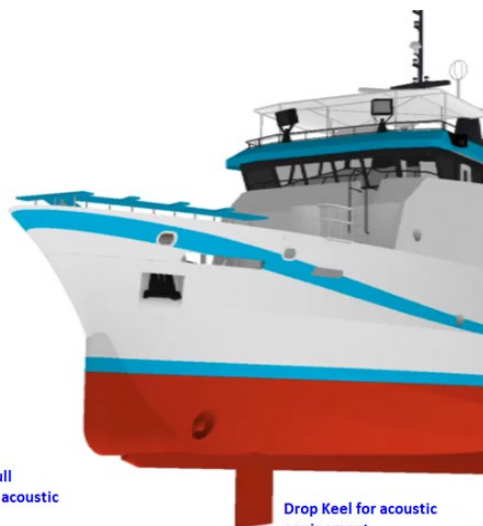
**Objectives:** Update regional chart bathymetry, improve navigation safety in identified coastal areas

The boat will be equipped with multibeam scientific echosounders and an auxiliary boat capable of coastal survey operations in shallow areas.

To navigate safely between islands, appropriate navigation charts are necessary. Bathymetric surveys are needed to create new charts and to update charts created with inaccurate and/or old bathymetric data.



DESCRIPTION	INSTRUMENTS/GEAR	DATA/SAMPLES COLLECTED
Bathymetry for chart updates	-Shallow/mid-depth (300m) multibeam sonar on ships and auxiliary boat with shallow multibeam sonar. -Precise location instrumentation	Seabed bathymetry data



Low-noise hull designed for acoustic studies

Drop Keel for acoustic equipment

