

**SECRETARIAT OF THE
PACIFIC COMMUNITY**

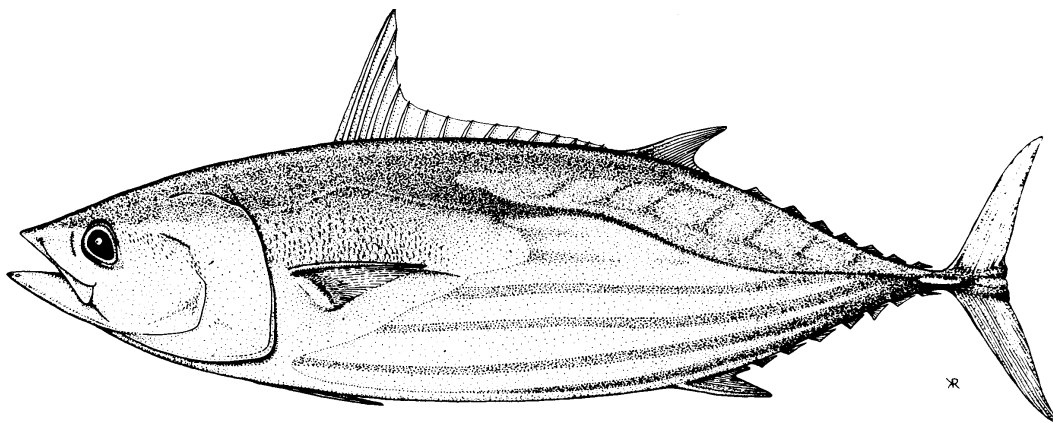
**SECRETARIAT GÉNÉRAL DE LA
COMMUNAUTÉ DU PACIFIQUE**

**WESTERN AND CENTRAL PACIFIC
OCEAN TUNA BULLETIN**

**BULLETIN DES THONIDÉS POUR L'OCÉAN
PACIFIQUE OCCIDENTAL ET CENTRAL**

JULY 2005

JUILLET 2005



Oceanic Fisheries Programme
Secretariat of the
Pacific Community
Noumea, New Caledonia



Programme pêche hauturière
Secrétariat général de la
Communauté du Pacifique
Nouméa, Nouvelle-Calédonie

© Copyright Secretariat of the Pacific Community, 2005

All rights for commercial / for profit reproduction or translation, in any form, reserved. The SPC authorises the partial reproduction or translation of this material for scientific, educational or research purposes, provided that SPC and the source document are properly acknowledged. Permission to reproduce the document and/or translate in whole, in any form, whether for commercial / for profit or non-profit purposes, must be requested in writing. Original SPC artwork may not be altered or separately published without permission.

Original text: English

© Copyright Secrétariat général de la Communauté du Pacifique, 2005

Tous droits réservés de reproduction ou de traduction à des fins commerciales/lucratives, sous quelque forme que ce soit. Le Secrétariat général de la Communauté du Pacifique autorise la reproduction ou la traduction partielle de ce document à des fins scientifiques ou éducatives ou pour les besoins de la recherche, à condition qu'il soit fait mention de la CPS et de la source. L'autorisation de la reproduction et/ou de la traduction intégrale ou partielle de ce document, sous quelque forme que ce soit, à des fins commerciales/lucratives ou à titre gratuit, doit être sollicitée au préalable par écrit. Il est interdit de modifier ou de publier séparément des graphismes originaux de la CPS sans autorisation préalable.

Texte original : anglais

TABLE OF CONTENTS

LONGLINE.....	5
Australia	5
China, offshore	7
Cook Islands	9
Federated States of Micronesia	11
Fiji Islands.....	13
French Polynesia	15
Japan	17
New Caledonia	19
Papua New Guinea	21
Samoa.....	23
Chinese Taipei, offshore, east of 130°E	25
Chinese Taipei, distant-water.....	27
POLE-AND-LINE	29
Japan	29
Solomon Islands	31
PURSE SEINE	33
Federated States of Micronesia	33
Japan	35
Papua New Guinea	37
Republic of Korea.....	39
Chinese Taipei.....	41
United States of America.....	43

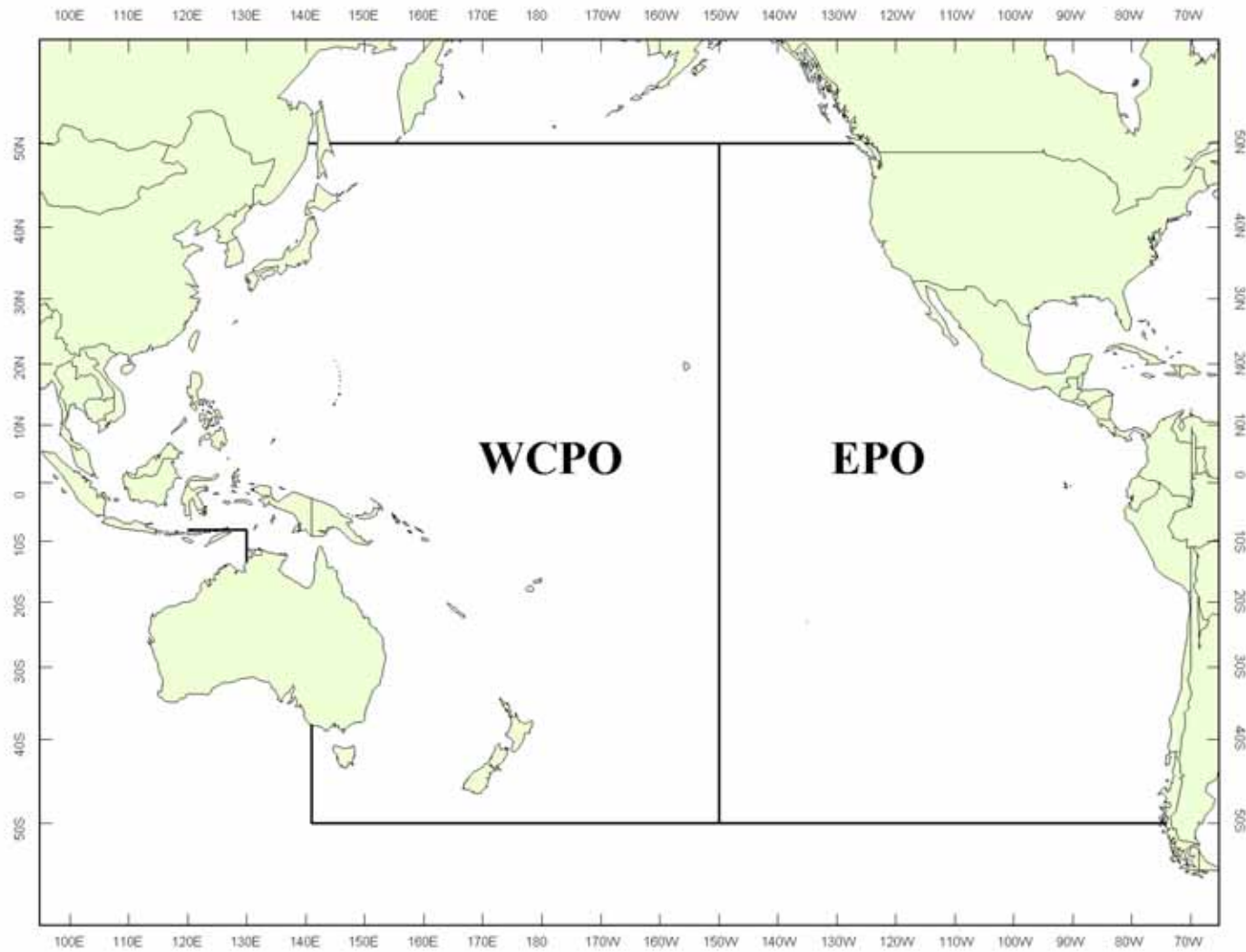


Figure 1. Western and Central Pacific Ocean (WCPO) and Eastern Pacific Ocean (EPO)

Figure 1. Océan Pacifique occidental et central (WCPO) et Océan Pacifique Est (EPO)

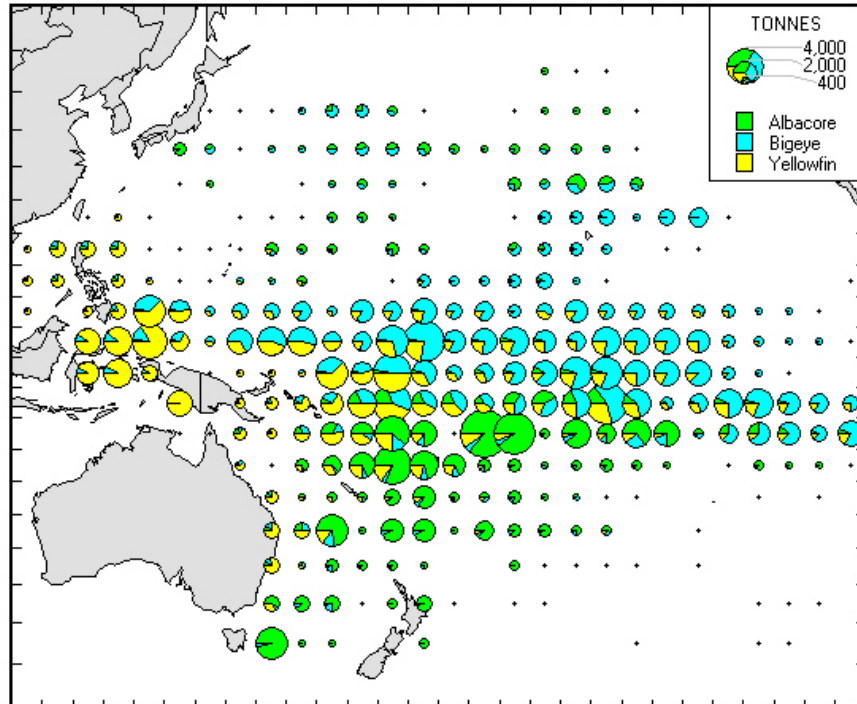


Figure 2. Longliner catch in 2002, determined from data held at SPC on 30 June 2005

Figure 2. Prises à la palangre en 2002 à partir des données dont disposait la CPS au 30 juin 2004

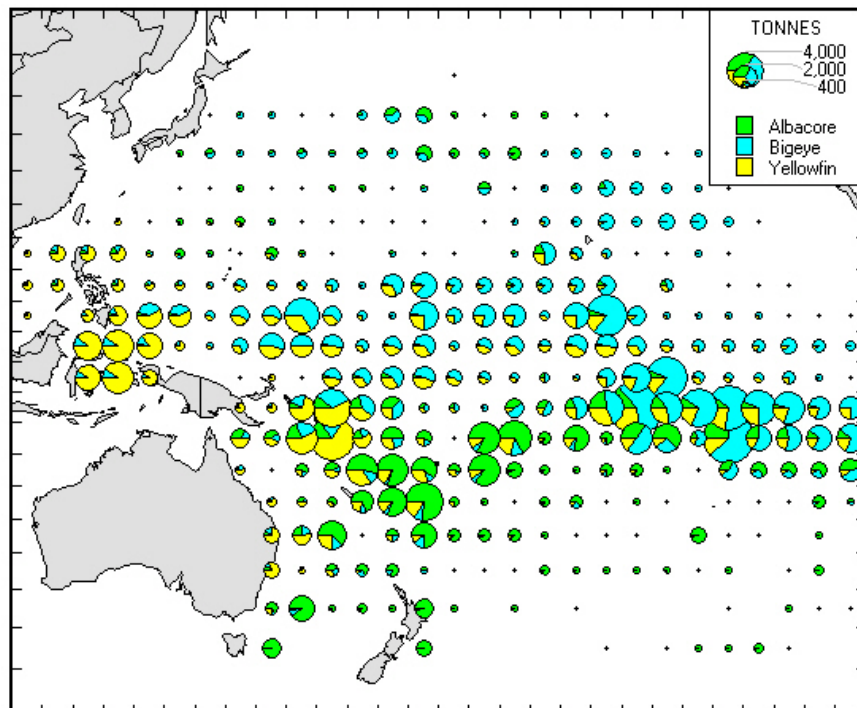


Figure 3. Longliner catch in 2003, determined from data held at SPC on 30 June 2005

Figure 3. Prises à la palangre en 2003 à partir des données dont disposait la CPS au 30 juin 2005

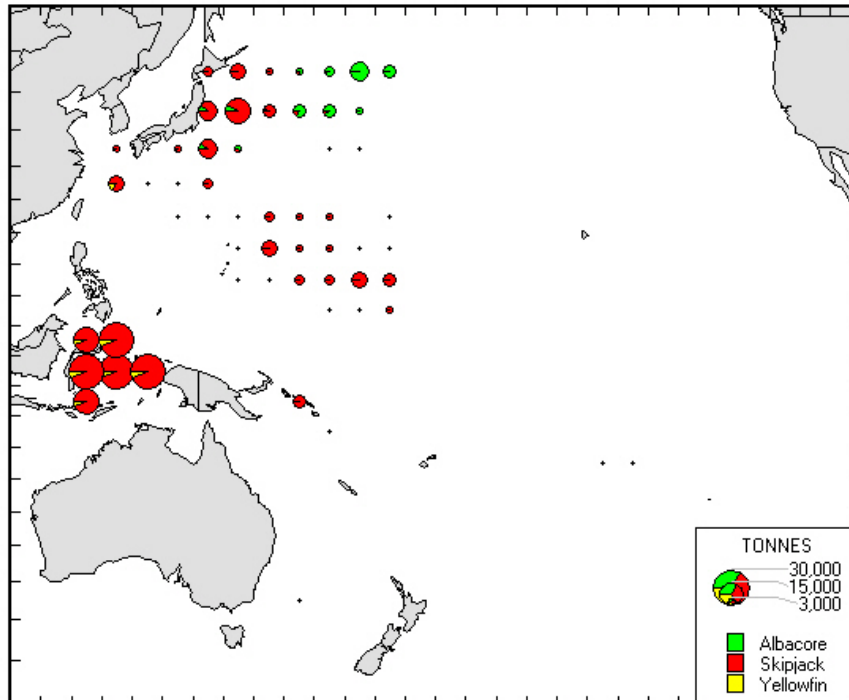


Figure 4. Pole-and-line catch in 2001, determined from data held at SPC on 30 June 2005

Figure 4. Prises de pêche à la canne en 2001 à partir des données dont disposait la CPS au 30 juin 2005

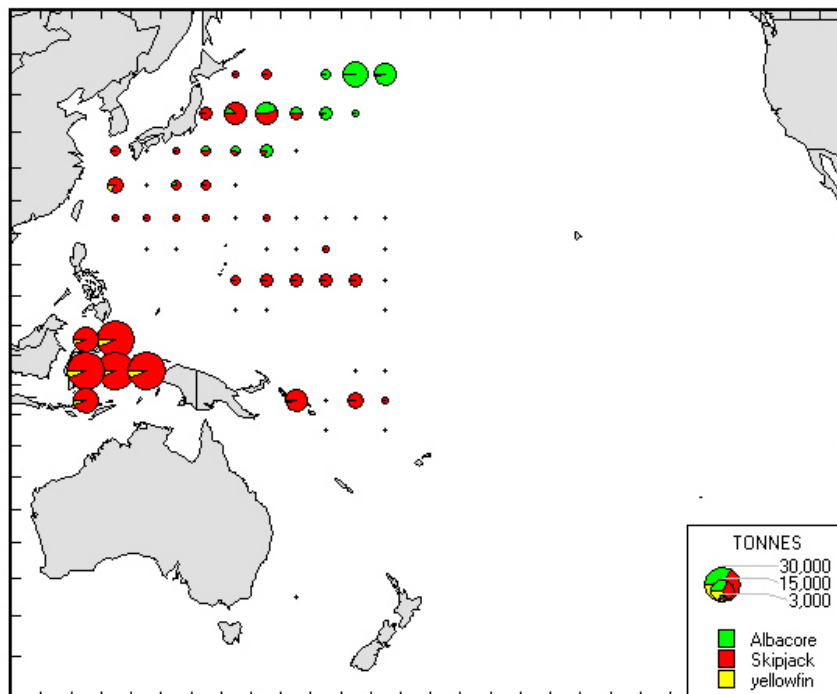


Figure 5. Pole-and-line catch in 2002, determined from data held at SPC on 30 June 2005

Figure 5. Prises de pêche à la canne en 2002 à partir des données dont disposait la CPS au 30 juin 2005

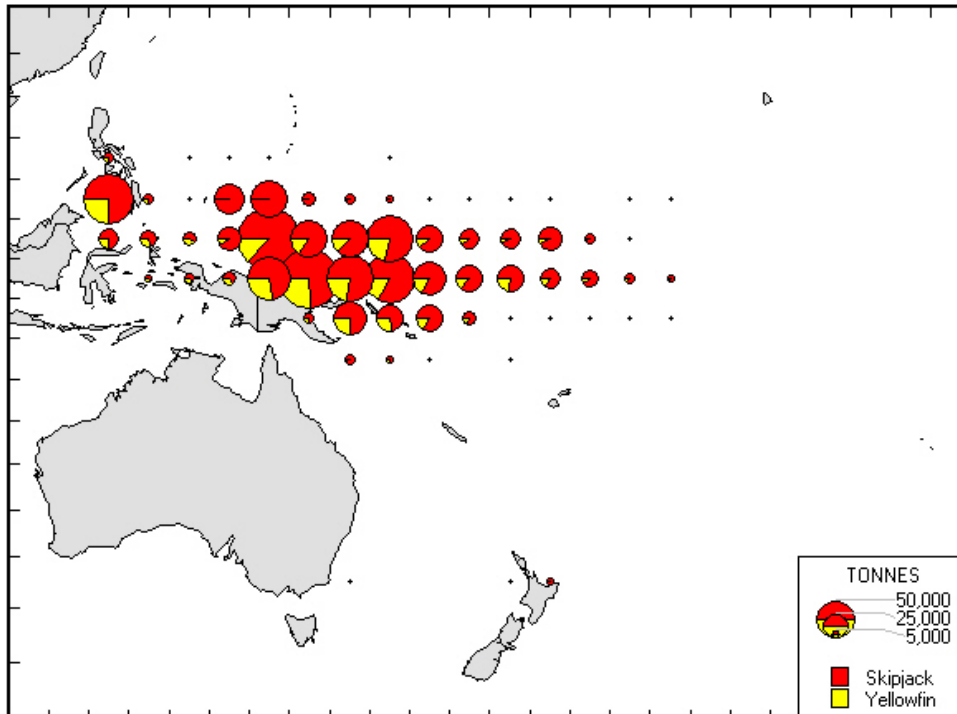


Figure 6. Purse-seine catch in 2003, determined from data held at SPC on 30 June 2005

Figure 6. Prises de pêche à la senne en 2003 à partir des données dont disposait la CPS au 30 juin 2005

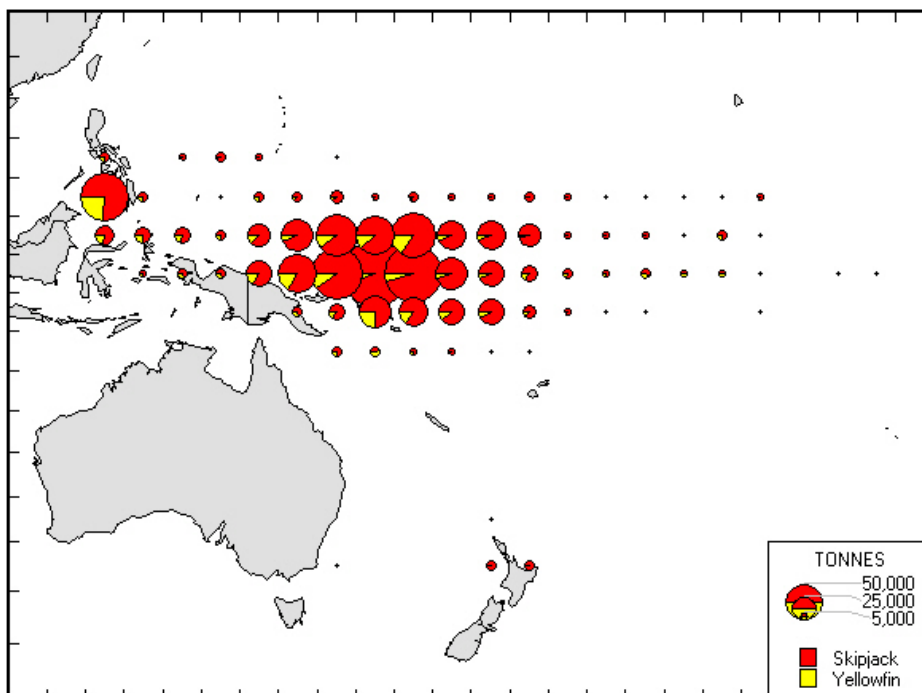


Figure 7. Purse-seine catch in 2004, determined from data held at SPC on 30 June 2005

Figure 7. Prises de pêche à la senne en 2004 à partir des données dont disposait la CPS au 30 juin 2005

LONGLINE: AUSTRALIA

The statistics in Table 1, which cover Australian longliners in the Western and Central Pacific Ocean (Figure 1), were determined from logsheet data held at SPC on 30 June 2005. Coverage rates are 85 per cent for 2003 and 100 per cent for 2004; the statistics in Table 1 have not been raised to represent complete coverage. Figure 8 presents catch rates for albacore, bigeye, yellowfin and all species combined. Figure 9 presents estimates of annual catches.

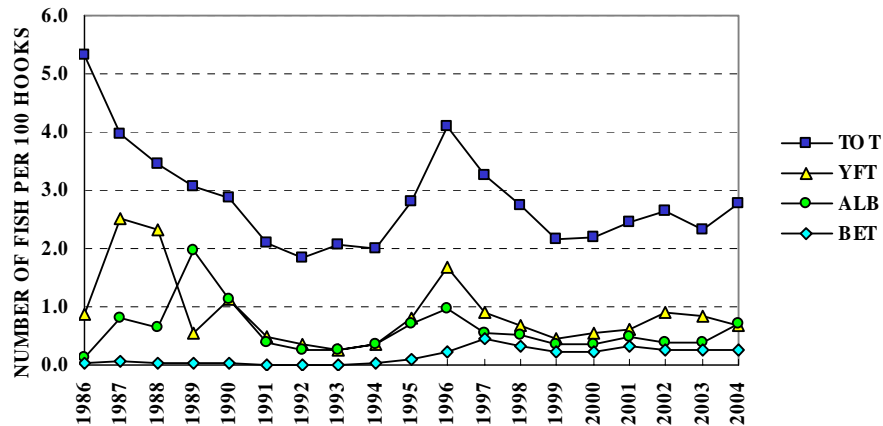


Figure 8. Australian longliner catch rates (number of fish per 100 hooks) for albacore (ALB), bigeye (BET), yellowfin (YFT) and total catch (TOT)

Figure 8. Taux de prise (nombre de poissons capturés pour 100 hameçons) de germon (ALB), thon obèse (BET), de thon jaune (YFT) et prises totales (TOT) des palangriers d'Australie

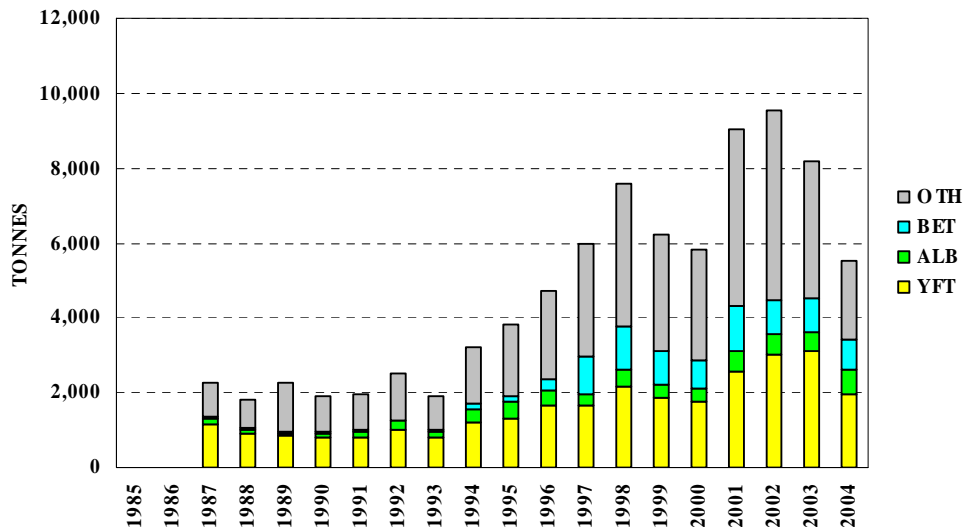


Figure 9. Catches (tonnes) of albacore (ALB), bigeye (BET), yellowfin (YFT) and other species (OTH) by Australian longliners

Figure 9. Prises (en tonnes) de germon (ALB), thon obèse (BET), de thon jaune (YFT) et d'autres espèces (OTH) des palangriers d'Australie

Table 1. Catch statistics for Australian longliners. Units: Days Covered = days on which hooks were set; Catch = tonnes; CPUE = number of fish per 100 hooks.

Tableau 1. Statistiques de prise des palangriers d'Australie. Unités : Nbr. de Jours = nombre de jours de mise en place des hameçons; Prises = tonnes; PUE = nombre de poissons capturés pour 100 hameçons mouillés.

MONTH	VESSELS COVERED	DAYS COVERED	ALBACORE		BIGEYE		YELLOWFIN		OTHERS	TOTAL	
			CATCH	CPUE	CATCH	CPUE	CATCH	CPUE	CATCH	CATCH	CPUE
MOIS	NBR. DE NAVIRES	NBR. DE JOURS	GERMON		THON OBÈSE		THON JAUNE		AUTRES	TOTAL	
			PRISES	PUE	PRISES	PUE	PRISES	PUE	PRISES	PRISES	PUE
JAN/03	123	1,125	20	0.15	50	0.17	197	0.63	285	552	1.92
FEB	121	1,113	13	0.09	62	0.19	254	0.76	313	642	2.14
MAR	120	1,205	16	0.11	81	0.22	263	0.74	232	593	1.95
APR	121	1,129	20	0.14	110	0.36	262	0.80	138	529	2.05
MAY	120	1,197	39	0.24	147	0.41	205	0.66	174	564	2.08
JUN	118	1,161	105	0.83	99	0.34	204	0.65	187	595	2.53
JUL	118	1,173	96	0.90	93	0.32	211	0.67	209	610	2.60
AUG	121	1,204	80	0.84	77	0.31	431	1.54	218	806	3.55
SEP	116	1,042	49	0.52	64	0.26	374	1.38	212	699	2.95
OCT	122	1,174	43	0.39	53	0.21	336	0.96	202	634	2.31
NOV	105	984	16	0.18	20	0.07	203	0.72	196	435	1.81
DEC	98	735	9	0.11	18	0.09	100	0.47	187	314	1.71
TOT	153	13,242	506	0.39	876	0.25	3,040	0.84	2,553	6,974	2.32
AVG	117	1,104	42	0.38	73	0.25	253	0.83	213	581	2.30
JAN/04	92	762	10	0.13	19	0.09	106	0.54	165	301	1.87
FEB	94	654	6	0.09	19	0.10	69	0.42	152	246	1.82
MAR	94	841	18	0.21	34	0.14	93	0.39	215	361	2.10
APR	101	945	33	0.32	80	0.29	109	0.36	234	455	2.71
MAY	103	1,140	70	0.59	138	0.46	152	0.54	196	556	2.56
JUN	104	966	131	1.54	103	0.40	98	0.36	179	511	3.18
JUL	106	1,114	163	1.73	129	0.43	155	0.49	255	702	3.55
AUG	100	907	104	1.46	77	0.36	202	0.86	206	589	3.68
SEP	100	970	73	0.86	47	0.21	358	1.66	188	666	3.53
OCT	98	692	25	0.37	37	0.24	169	1.04	154	384	2.56
NOV	88	737	18	0.26	24	0.11	162	0.88	228	432	2.40
DEC	78	595	8	0.15	15	0.09	131	0.87	144	299	2.22
TOT	127	10,323	660	0.72	723	0.26	1,803	0.69	2,317	5,503	2.76
AVG	97	860	55	0.64	60	0.24	150	0.70	193	459	2.68
JAN/05	82	633	8	0.13	22	0.11	94	0.61	168	291	2.12
FEB	76	715	13	0.18	38	0.17	110	0.49	169	330	1.96
MAR	68	600	10	0.17	43	0.23	81	0.45	131	265	1.89
APR	39	244	7	0.30	25	0.29	28	0.36	63	124	2.20
MAY	2	2	0	0.00	0	0.29	0	0.00	0	1	2.42
JUN	0	—	—	—	—	—	—	—	—	—	—
JUL	0	—	—	—	—	—	—	—	—	—	—
AUG	0	—	—	—	—	—	—	—	—	—	—
SEP	0	—	—	—	—	—	—	—	—	—	—
OCT	0	—	—	—	—	—	—	—	—	—	—
NOV	0	—	—	—	—	—	—	—	—	—	—
DEC	0	—	—	—	—	—	—	—	—	—	—
TOT	84	2,194	37	0.18	128	0.18	313	0.50	531	1,010	2.01
AVG	53	439	7	0.16	26	0.22	63	0.38	106	202	2.12

LONGLINE: CHINA

The statistics in Table 2, which cover offshore Chinese longliners in the Western and Central Pacific Ocean (Figure 1), were determined from logsheet data held at SPC on 30 June 2005. The coverage rate is 23 per cent for 2003; the statistics in Table 2 have not been raised to represent complete coverage. Figure 10 presents catch rates for bigeye, yellowfin and all species combined. Table 2 and Figure 10 do not cover longliners targeting albacore in temperate waters during 1999–2004. Figure 11 presents estimates of annual catches.

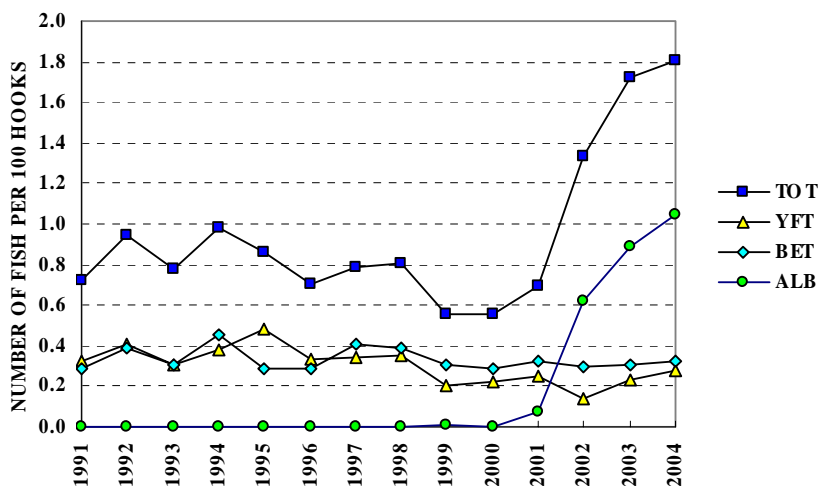


Figure 10. Chinese offshore longliner catch rates (number of fish per 100 hooks) for bigeye (BET), yellowfin (YFT) and total catch (TOT)

Figure 10. Taux de prise (nombre de poissons capturés pour 100 hameçons) de thon obèse (BET), de thon jaune (YFT) et prises totales (TOT) des palangriers de Chine pêchant au large

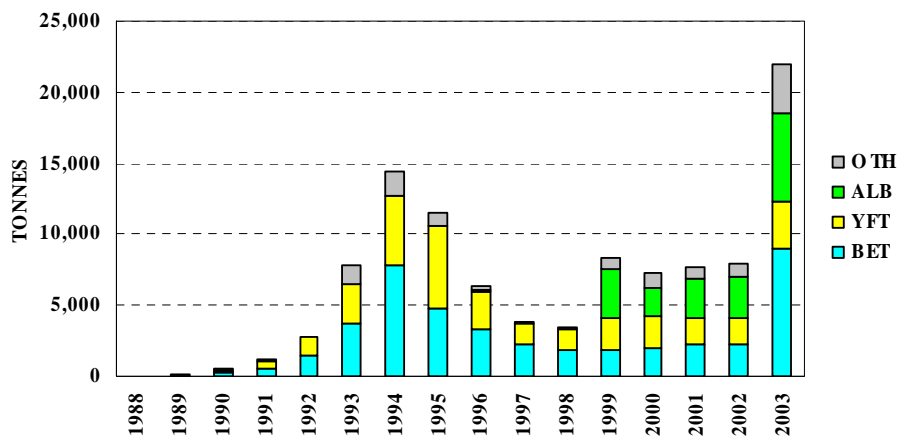


Figure 11. Catches (tonnes) of bigeye (BET), yellowfin (YFT) and other species (OTH) by Chinese longliners

Figure 11. Prises (en tonnes) de thon obèse (BET), de thon jaune (YFT) et d'autres espèces (OTH) des palangriers de Chine

Table 2. Catch statistics for Chinese offshore longliners. Units: Days Covered = days on which hooks were set; Catch = tonnes; CPUE = number of fish per 100 hooks.

Tableau 2. Statistiques de prise des palangriers de la Chine pêchant au large. Unités : Nbr. de Jours = nombre de jours de mise en place des hameçons; Prises = tonnes; PUE = nombre de poissons capturés pour 100 hameçons mouillés.

MONTH	VESSELS COVERED	DAYS COVERED	ALBACORE		BIGEYE		YELLOWFIN		OTHERS	TOTAL	
			CATCH	CPUE	CATCH	CPUE	CATCH	CPUE		CATCH	CPUE
MOIS	NBR. DE NAVIRES	NBR. DE JOURS	GERMON		THON OBÈSE		THON JAUNE		AUTRES	TOTAL	
			PRISES	PUE	PRISES	PUE	PRISES	PUE		PRISES	PUE
JAN/03	43	516	84	0.77	110	0.49	61	0.32	29	285	1.79
FEB	56	810	33	0.24	122	0.39	73	0.30	40	268	1.10
MAR	49	913	30	0.21	129	0.40	64	0.28	66	290	1.19
APR	53	934	54	0.33	138	0.42	118	0.56	73	382	1.72
MAY	54	1,010	197	0.91	144	0.41	85	0.31	89	515	1.98
JUN	49	823	158	0.88	109	0.36	80	0.35	76	422	1.93
JUL	45	709	230	1.34	67	0.19	63	0.24	76	435	2.29
AUG	61	1,034	195	1.04	104	0.22	45	0.12	70	414	1.67
SEP	67	1,219	170	0.75	136	0.25	48	0.14	68	422	1.43
OCT	64	1,043	154	0.63	130	0.29	47	0.15	63	394	1.34
NOV	64	1,233	356	1.29	139	0.24	56	0.14	67	618	1.85
DEC	64	1,176	388	1.59	120	0.22	61	0.15	63	632	2.16
TOT	102	11,420	2,049	0.89	1,447	0.31	801	0.23	780	5,078	1.72
AVG	56	952	171	0.83	121	0.32	67	0.26	65	423	1.70
JAN/04	55	825	218	1.12	92	0.21	46	0.15	45	401	1.62
FEB	33	494	106	0.83	58	0.23	32	0.17	26	222	1.37
MAR	26	409	57	0.56	39	0.20	34	0.26	22	152	1.19
APR	33	424	75	0.67	26	0.13	71	0.48	17	190	1.39
MAY	40	688	133	0.71	96	0.32	119	0.42	30	378	1.58
JUN	46	762	227	0.99	156	0.41	117	0.35	38	537	1.92
JUL	50	847	279	1.17	195	0.38	161	0.42	60	694	2.18
AUG	43	661	453	2.75	167	0.39	116	0.32	61	797	3.69
SEP	43	623	112	0.69	184	0.46	78	0.25	43	417	1.53
OCT	44	659	114	0.43	179	0.36	44	0.13	42	378	1.06
NOV	21	291	126	0.95	51	0.24	20	0.11	24	221	1.48
DEC	34	356	93	0.92	42	0.16	33	0.16	20	189	1.37
TOT	103	7,039	1,991	1.05	1,285	0.32	871	0.28	429	4,576	1.81
AVG	39	587	166	0.98	107	0.29	73	0.27	36	381	1.70
JAN/05	46	771	86	0.32	160	0.27	117	0.28	48	412	0.99
FEB	41	381	52	0.42	49	0.19	31	0.15	19	151	0.86
MAR	43	570	40	0.25	102	0.27	47	0.16	32	221	0.78
APR	3	56	41	2.04	4	0.08	10	0.23	5	59	2.52
MAY	2	24	25	2.55	0	0.03	3	0.16	4	31	3.38
JUN	0	—	—	—	—	—	—	—	—	—	—
JUL	0	—	—	—	—	—	—	—	—	—	—
AUG	0	—	—	—	—	—	—	—	—	—	—
SEP	0	—	—	—	—	—	—	—	—	—	—
OCT	0	—	—	—	—	—	—	—	—	—	—
NOV	0	—	—	—	—	—	—	—	—	—	—
DEC	0	—	—	—	—	—	—	—	—	—	—
TOT	53	1,802	244	0.43	316	0.24	207	0.21	107	874	1.01
AVG	27	360	49	1.12	63	0.17	41	0.20	21	175	1.71

LONGLINE: COOK ISLANDS

The statistics in Table 3, which cover Cook Islands, were determined from logsheet data held at SPC on 30 June 2005. Coverage rates are 88 per cent for 2003 and 69 per cent for 2004; the statistics in Table 3 have not been raised to represent complete coverage. Figure 12 presents catch rates for albacore, bigeye, yellowfin and all species combined. Figure 13 presents estimates of annual catches.

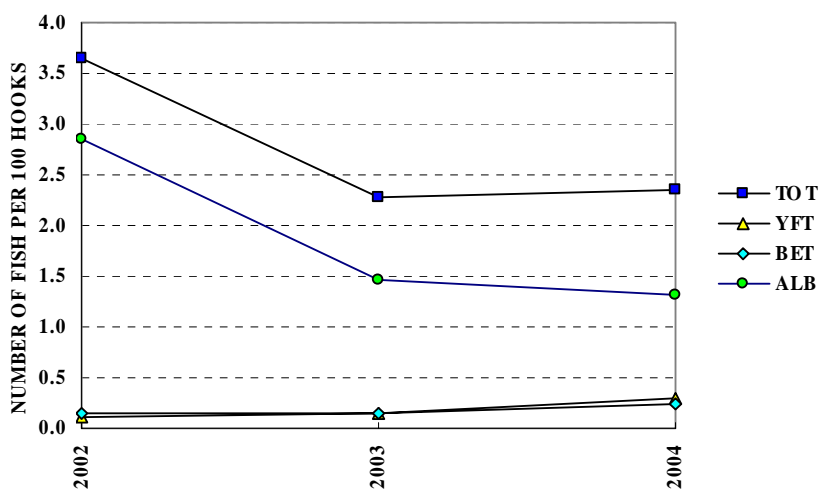


Figure 12. Cook Islands longliner catch rates (number of fish per 100 hooks) for albacore (ALB), bigeye (BET), yellowfin (YFT) and total catch (TOT)

Figure 12. Taux de prise (nombre de poissons capturés pour 100 hameçons) de germon (ALB), de thon obèse (BET), de thon jaune (YFT) et prises totales (TOT) des palangriers des Îles Cook

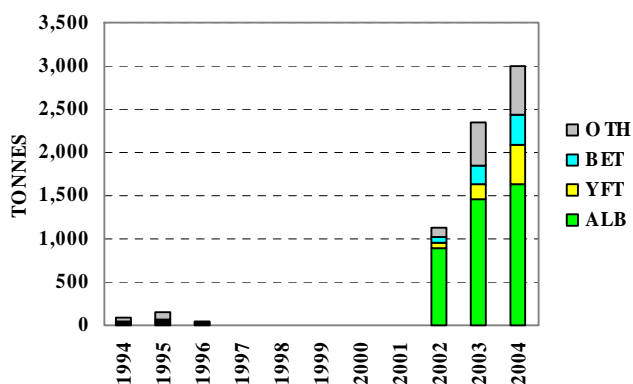


Figure 13. Catches (tonnes) of albacore (ALB), bigeye (BET), yellowfin (YFT) and other species (OTH) by Cook Islands longliners

Figure 13. Prises (en tonnes) de germon (ALB), de thon obèse (BET), de thon jaune (YFT) et d'autres espèces (OTH) des palangriers des Îles Cook

Table 3. Catch statistics for Cook Islands longliners. Units: Days Covered = days on which hooks were set; Catch = tonnes; CPUE = number of fish per 100 hooks.

Tableau 3. Statistiques de prise des palangriers des Îles Cook. Unités : Nbr. de Jours = nombre de jours de mise en place des hameçons; Prises = tonnes; PUE = nombre de poissons capturés pour 100 hameçons mouillés.

MONTH	VESSELS COVERED	DAYS COVERED	ALBACORE		BIGEYE		YELLOWFIN		OTHERS	TOTAL	
			CATCH	CPUE	CATCH	CPUE	CATCH	CPUE		CATCH	CPUE
MOIS	NBR. DE NAVIRES	NBR. DE JOURS	GERMON		THON OBÈSE		THON JAUNE		AUTRES	TOTAL	
			PRISES	PUE	PRISES	PUE	PRISES	PUE		PRISES	PUE
JAN/02	0	—	—	—	—	—	—	—	—	—	—
FEB	1	2	0	0.46	0	0.08	0	0.04	0	1	0.81
MAR	2	18	10	2.44	2	0.24	3	0.35	0	15	3.17
APR	3	30	24	2.54	3	0.16	1	0.06	3	31	2.95
MAY	5	68	45	2.38	4	0.09	5	0.17	12	65	3.07
JUN	5	81	71	3.15	7	0.15	2	0.06	11	91	3.78
JUL	7	95	74	2.75	5	0.11	4	0.10	13	97	3.50
AUG	7	106	112	3.75	12	0.25	7	0.15	11	142	4.64
SEP	9	126	106	2.72	7	0.09	7	0.10	20	140	3.59
OCT	9	100	95	3.06	5	0.08	6	0.10	14	120	3.71
NOV	7	79	63	2.79	6	0.18	5	0.10	17	90	3.92
DEC	8	95	85	2.38	7	0.14	5	0.07	12	109	3.16
TOT	12	800	685	2.85	58	0.14	44	0.11	112	899	3.64
AVG	6	73	62	2.58	5	0.14	4	0.12	10	82	3.30
JAN/03	9	112	70	1.90	5	0.12	5	0.10	16	96	2.74
FEB	5	69	39	1.82	4	0.15	7	0.24	13	63	3.46
MAR	8	127	47	1.05	6	0.09	13	0.27	15	82	1.87
APR	13	163	78	1.42	13	0.18	21	0.29	22	134	2.41
MAY	15	163	166	2.89	23	0.29	20	0.23	22	231	3.92
JUN	15	190	115	1.86	12	0.14	17	0.16	27	171	2.63
JUL	18	184	72	1.30	9	0.13	8	0.08	33	122	2.22
AUG	26	295	132	1.40	18	0.15	8	0.05	77	235	2.24
SEP	27	306	116	1.22	20	0.20	15	0.14	49	200	1.93
OCT	31	404	137	1.17	27	0.20	18	0.15	83	266	1.96
NOV	32	430	181	1.33	13	0.09	11	0.09	77	282	1.93
DEC	26	306	121	1.28	9	0.10	11	0.14	48	188	1.90
TOT	42	2,749	1,273	1.46	158	0.15	155	0.14	483	2,069	2.27
AVG	19	229	106	1.55	13	0.15	13	0.16	40	172	2.43
JAN/04	16	235	89	1.09	6	0.06	9	0.13	31	134	1.56
FEB	15	187	30	0.58	4	0.07	5	0.09	20	60	0.98
MAR	12	154	43	0.93	16	0.39	29	0.74	13	100	2.35
APR	18	219	65	0.96	20	0.30	28	0.41	25	138	1.95
MAY	24	369	162	1.39	41	0.29	30	0.21	45	278	2.19
JUN	26	278	180	1.92	18	0.14	22	0.16	38	258	2.67
JUL	22	254	131	1.46	20	0.20	52	0.51	46	250	3.19
AUG	20	281	127	1.36	33	0.34	55	0.47	52	268	3.10
SEP	20	279	140	1.64	36	0.38	42	0.35	57	275	3.08
OCT	17	228	104	1.46	20	0.22	17	0.16	33	174	2.22
NOV	11	166	58	1.12	14	0.19	13	0.15	26	111	1.95
DEC	5	61	10	0.63	3	0.13	2	0.09	11	27	1.39
TOT	32	2,711	1,139	1.32	230	0.24	304	0.29	397	2,070	2.36
AVG	17	226	95	1.21	19	0.23	25	0.29	33	173	2.22

LONGLINE: FEDERATED STATES OF MICRONESIA

The statistics in Table 4 were determined from logsheet data held at SPC on 30 June 2005. The coverage rate is 64 per cent for 2003 and 62 per cent for 2004; the statistics in Table 4 have not been raised to represent complete coverage. Figure 14 presents catch rates for bigeye, yellowfin and all species combined. Figure 15 presents estimates of annual catches.

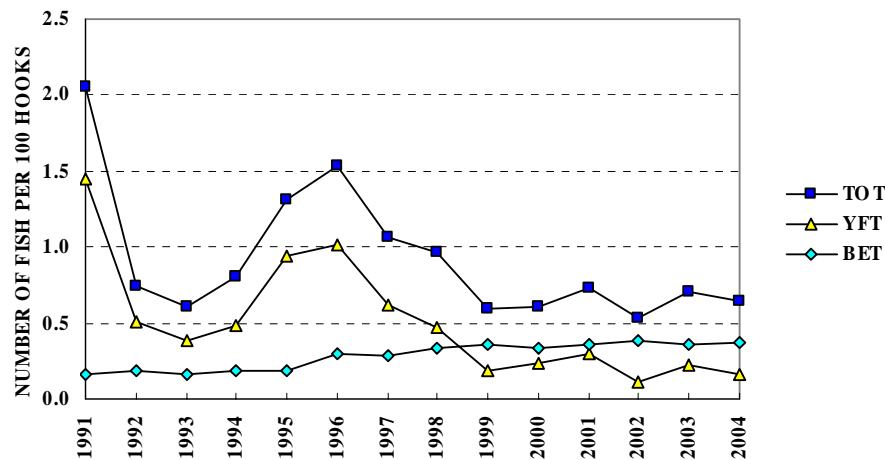


Figure 14. Federated States of Micronesia longliner catch rates (number of fish per 100 hooks) for bigeye (BET), yellowfin (YFT) and total catch (TOT)

Figure 14. Taux de prise (nombre de poissons capturés pour 100 hameçons) de thon obèse (BET), de thon jaune (YFT) et prises totales (TOT) des palangriers des États fédérés de Micronésie

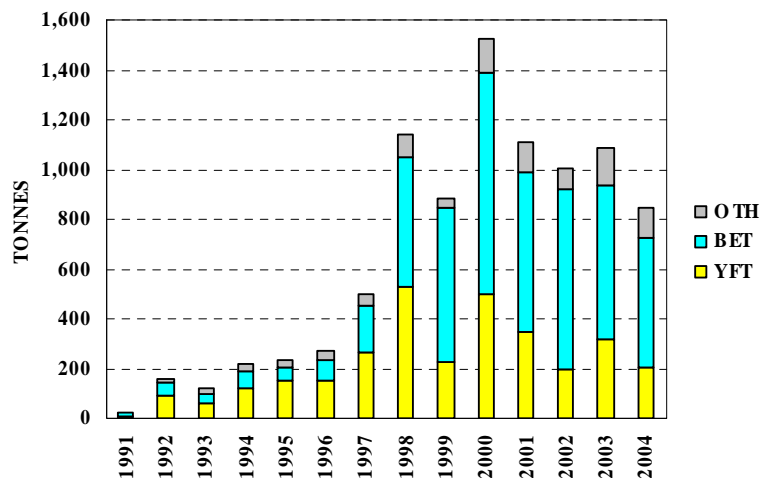


Figure 15. Catches (tonnes) of bigeye (BET), yellowfin (YFT) and other species (OTH) by Federated States of Micronesia longliners

Figure 15. Prises (en tonnes) de thon obèse (BET), de thon jaune (YFT) et d'autres espèces (OTH) des palangriers des États fédérés de Micronésie

Table 4. Catch statistics for Federated States of Micronesia longliners. Units: Days Covered = days on which hooks were set; Catch = tonnes; CPUE = number of fish per 100 hooks.

Tableau 4. Statistiques de prise des palangriers des États Fédérés de Micronésie. Unités : Nbr. de Jours = nombre de jours de mise en place des hameçons; Prises = tonnes; PUE = nombre de poissons capturés pour 100 hameçons mouillés.

MONTH	VESSELS COVERED	DAYS COVERED	ALBACORE		BIGEYE		YELLOWFIN		OTHERS	TOTAL	
			CATCH	CPUE	CATCH	CPUE	CATCH	CPUE		CATCH	CPUE
MOIS	NBR. DE NAVIRES	NBR. DE JOURS	GERMON		THON OBÈSE		THON JAUNE		AUTRES	TOTAL	
			PRISES	PUE	PRISES	PUE	PRISES	PUE		PRISES	PUE
JAN/03	16	227	0	0.00	42	0.41	23	0.32	4	69	0.78
FEB	16	215	0	0.00	51	0.58	22	0.34	6	79	1.02
MAR	15	196	0	0.00	41	0.40	19	0.27	11	71	0.88
APR	8	89	0	0.00	17	0.37	13	0.44	2	32	0.85
MAY	8	119	0	0.00	13	0.25	9	0.26	4	26	0.58
JUN	8	131	0	0.00	19	0.31	12	0.34	5	36	0.74
JUL	5	86	0	0.00	15	0.33	5	0.15	4	24	0.56
AUG	16	149	0	0.01	23	0.30	7	0.15	5	35	0.52
SEP	16	252	0	0.00	39	0.29	10	0.11	9	58	0.47
OCT	13	223	0	0.01	34	0.29	12	0.14	13	59	0.58
NOV	14	244	0	0.00	54	0.38	13	0.13	14	81	0.65
DEC	17	273	0	0.00	54	0.38	25	0.24	17	96	0.78
TOT	25	2,204	1	0.00	402	0.36	169	0.22	94	665	0.70
AVG	13	184	0	0.00	33	0.36	14	0.24	8	55	0.70
JAN/04	18	239	0	0.00	50	0.39	16	0.17	14	80	0.70
FEB	12	91	0	0.00	22	0.40	15	0.38	5	42	0.91
MAR	4	99	0	0.00	22	0.29	7	0.14	4	34	0.51
APR	4	87	0	0.00	11	0.17	5	0.11	4	20	0.36
MAY	4	89	0	0.00	19	0.28	6	0.13	3	29	0.48
JUN	4	50	0	0.00	16	0.42	2	0.08	5	23	0.65
JUL	4	91	0	0.00	31	0.46	5	0.11	6	42	0.67
AUG	3	54	0	0.00	20	0.52	4	0.14	3	27	0.75
SEP	4	68	0	0.00	19	0.45	7	0.22	4	31	0.77
OCT	4	99	0	0.00	29	0.42	5	0.10	4	38	0.61
NOV	4	8	0	0.00	2	0.41	0	0.08	1	3	0.62
DEC	1	3	0	0.00	1	0.32	1	0.29	0	2	0.79
TOT	18	978	0	0.00	242	0.37	74	0.16	53	369	0.64
AVG	6	82	0	0.00	20	0.38	6	0.16	4	31	0.65
JAN/05	4	66	0	0.00	17	0.37	14	0.39	3	33	0.82
FEB	4	28	0	0.00	3	0.16	3	0.22	1	6	0.44
MAR	4	39	0	0.00	6	0.26	3	0.16	1	10	0.47
APR	0	—	—	—	—	—	—	—	—	—	—
MAY	0	—	—	—	—	—	—	—	—	—	—
JUN	0	—	—	—	—	—	—	—	—	—	—
JUL	0	—	—	—	—	—	—	—	—	—	—
AUG	0	—	—	—	—	—	—	—	—	—	—
SEP	0	—	—	—	—	—	—	—	—	—	—
OCT	0	—	—	—	—	—	—	—	—	—	—
NOV	0	—	—	—	—	—	—	—	—	—	—
DEC	0	—	—	—	—	—	—	—	—	—	—
TOT	6	133	0	0.00	26	0.30	19	0.29	5	50	0.65
AVG	4	44	0	0.00	9	0.26	6	0.26	2	17	0.58

LONGLINE: FIJI ISLANDS

The statistics in Table 5, which cover domestic Fiji Islands longliners and joint-venture longliners, were determined from logsheet data held at SPC on 30 June 2005. The coverage rate is 96 per cent for 2003 and 78 per cent for 2004; the statistics in Table 5 have not been raised to represent complete coverage. Figure 16 presents catch rates for albacore, bigeye, yellowfin and all species combined. Figure 17 presents estimates of annual catches; catches for 1989–1999 have been underestimated; catches of ‘other’ species for 2002 were estimated from observer data, rather than logsheet and unloading data.

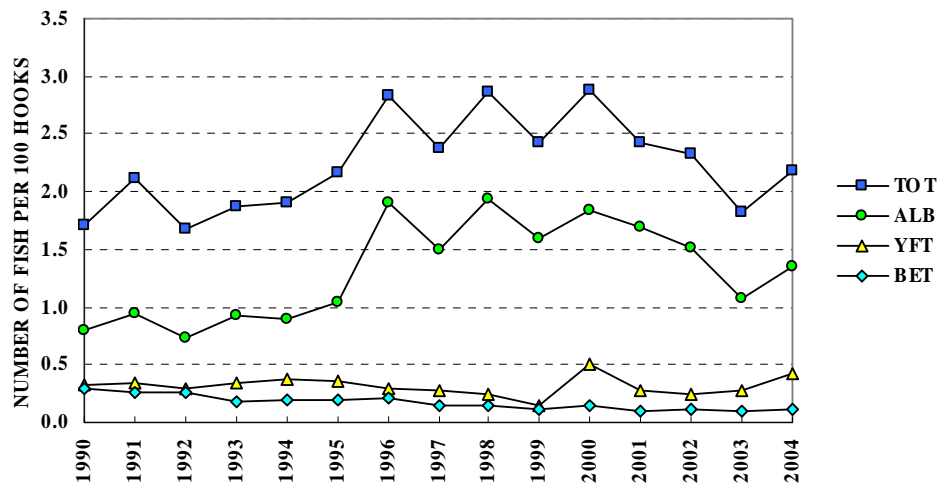


Figure 16. Fijian longliner catch rates (number of fish per 100 hooks) for albacore (ALB), bigeye (BET), yellowfin (YFT) and total catch (TOT)

Figure 16. Taux de prise (nombre de poissons capturés pour 100 hameçons) de germon (ALB), de thon obèse (BET), de thon jaune (YFT) et prises totales (TOT) des palangriers des Îles Fidji

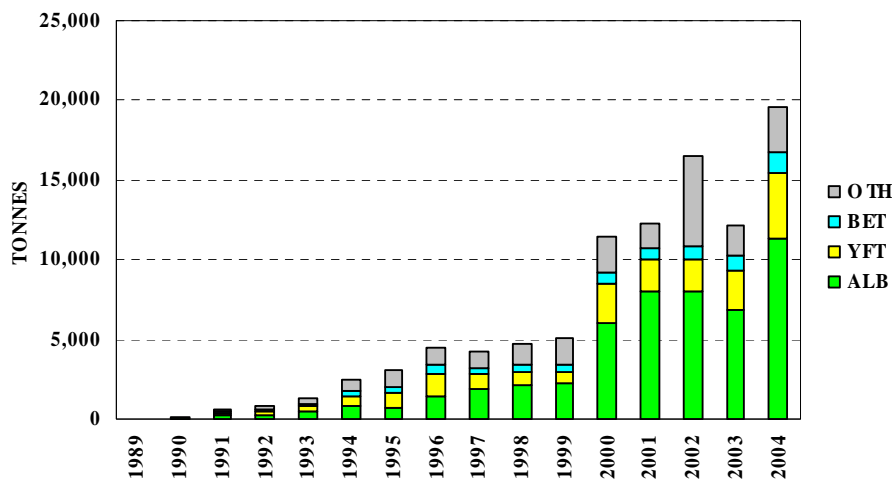


Figure 17. Catches (tonnes) of albacore (ALB), bigeye (BET), yellowfin (YFT) and other species (OTH) by Fijian longliners

Figure 17. Prises (en tonnes) de germon (ALB), de thon obèse (BET), de thon jaune (YFT) et d'autres espèces (OTH) des palangriers des Îles Fidji

Table 5. Catch statistics for Fiji Islands longliners. Units: Days Covered = days on which hooks were set; Catch = tonnes; CPUE = number of fish per 100 hooks.

Tableau 5. Statistiques de prise des palangriers des Îles Fidji. Unités : Nbr. de Jours = nombre de jours de mise en place des hameçons; Prises = tonnes; PUE = nombre de poissons capturés pour 100 hameçons mouillés.

MONTH	VESSELS COVERED	DAYS COVERED	ALBACORE		BIGEYE		YELLOWFIN		OTHERS	TOTAL	
			CATCH	CPUE	CATCH	CPUE	CATCH	CPUE	CATCH	CATCH	CPUE
MOIS	NBR. DE NAVIRES	NBR. DE JOURS	GERMON		THON OBÈSE		THON JAUNE		AUTRES	TOTAL	
			PRISES	PUE	PRISES	PUE	PRISES	PUE	PRISES	PRISES	PUE
JAN/03	88	1,247	439	0.91	44	0.07	218	0.29	143	843	1.81
FEB	84	1,235	294	0.59	55	0.09	196	0.28	112	657	1.32
MAR	81	1,249	223	0.48	64	0.10	194	0.30	118	599	1.29
APR	76	1,067	262	0.61	84	0.16	262	0.47	110	718	1.60
MAY	86	1,399	416	0.75	103	0.15	524	0.71	130	1,173	1.93
JUN	90	1,339	522	0.99	121	0.19	307	0.41	136	1,086	1.94
JUL	89	1,441	798	1.37	71	0.11	148	0.19	146	1,162	2.08
AUG	97	1,613	1,012	1.76	42	0.05	123	0.15	152	1,328	2.39
SEP	85	1,248	486	1.06	76	0.10	65	0.10	108	736	1.57
OCT	88	1,522	709	1.18	78	0.10	86	0.12	153	1,027	1.78
NOV	87	1,602	914	1.41	51	0.06	112	0.16	149	1,226	2.00
DEC	86	1,560	882	1.39	33	0.04	110	0.15	143	1,168	1.92
TOT	121	16,522	6,955	1.08	823	0.10	2,345	0.27	1,600	11,723	1.83
AVG	86	1,377	580	1.04	69	0.10	195	0.28	133	977	1.80
JAN/04	89	1,555	702	1.11	46	0.05	122	0.15	114	984	1.58
FEB	75	999	319	0.76	46	0.09	103	0.22	71	539	1.29
MAR	75	1,137	250	0.56	101	0.18	236	0.47	71	659	1.38
APR	75	1,256	348	0.76	120	0.19	444	0.80	75	987	1.92
MAY	87	1,662	452	0.70	125	0.16	315	0.44	108	1,000	1.53
JUN	92	1,583	1,078	1.82	136	0.18	419	0.63	102	1,735	2.86
JUL	89	1,484	1,105	1.93	120	0.15	506	0.75	98	1,829	3.15
AUG	92	1,603	1,210	2.19	83	0.10	261	0.35	216	1,770	3.06
SEP	95	1,585	829	1.41	101	0.12	318	0.40	210	1,458	2.36
OCT	98	1,594	746	1.16	107	0.12	336	0.46	188	1,376	2.09
NOV	92	1,646	1,046	1.51	51	0.05	143	0.20	205	1,446	2.12
DEC	95	1,605	1,133	1.75	40	0.05	154	0.18	187	1,514	2.32
TOT	113	17,709	9,218	1.35	1,077	0.12	3,357	0.42	1,645	15,298	2.18
AVG	88	1,476	768	1.31	90	0.12	280	0.42	137	1,275	2.14
JAN/05	95	1,694	887	1.28	36	0.04	175	0.18	217	1,315	1.82
FEB	86	1,508	590	1.00	41	0.05	136	0.16	161	929	1.51
MAR	75	1,249	570	1.21	40	0.06	107	0.16	112	830	1.68
APR	48	480	204	1.17	20	0.08	69	0.25	46	338	1.75
MAY	2	19	12	1.69	2	0.17	10	0.74	3	27	3.09
JUN	0	—	—	—	—	—	—	—	—	—	—
JUL	0	—	—	—	—	—	—	—	—	—	—
AUG	0	—	—	—	—	—	—	—	—	—	—
SEP	0	—	—	—	—	—	—	—	—	—	—
OCT	0	—	—	—	—	—	—	—	—	—	—
NOV	0	—	—	—	—	—	—	—	—	—	—
DEC	0	—	—	—	—	—	—	—	—	—	—
TOT	99	4,950	2,262	1.17	138	0.05	498	0.18	540	3,438	1.69
AVG	61	990	452	1.27	28	0.08	100	0.30	108	688	1.97

LONGLINE: FRENCH POLYNESIA

The statistics in Table 6 were determined from logsheet data held at SPC on 30 June 2005. Coverage rates are 72 per cent for 2003 and 53 per cent for 2004; the statistics in Table 6 have not been raised to represent complete coverage. Figure 18 presents catch rates for albacore, bigeye, yellowfin and all species combined. Figure 19 presents estimates of annual catches.

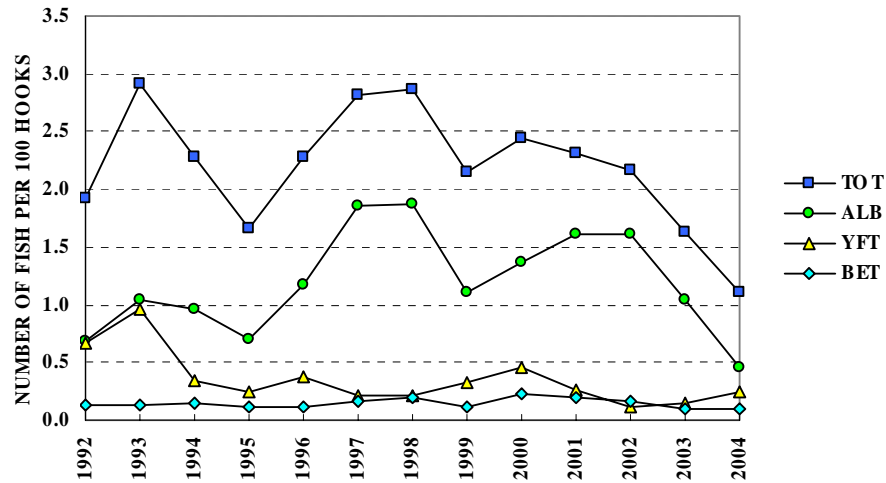


Figure 18. French Polynesian longliner catch rates (number of fish per 100 hooks) for albacore (ALB), bigeye (BET), yellowfin (YFT) and total catch (TOT)

Figure 18. Taux de prise (nombre de poissons capturés pour 100 hameçons) de germon (ALB), de thon obèse (BET), de thon jaune (YFT) et prises totales (TOT) des palangriers de Polynésie française

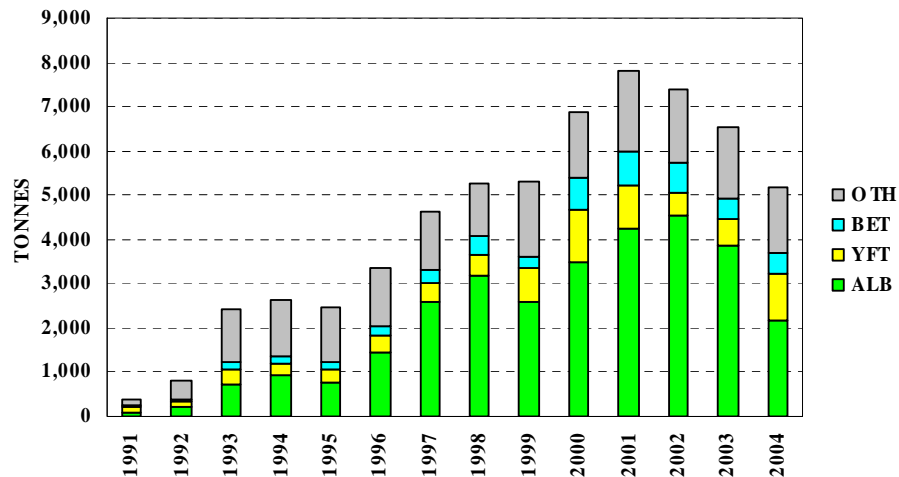


Figure 19. Catches (tonnes) of albacore (ALB), bigeye (BET), yellowfin (YFT) and other species (OTH) by French Polynesian longliners

Figure 19. Prises (en tonnes) de germon (ALB), de thon obèse (BET), de thon jaune (YFT) et d'autres espèces (OTH) des palangriers de Polynésie française

Table 6. Catch statistics for French Polynesian longliners. Units: Days Covered = days on which hooks were set; Catch = tonnes; CPUE = number of fish per 100 hooks.

Tableau 6. Statistiques de prise des palangriers de Polynésie française. Unités : Nbr. de Jours = nombre de jours de mise en place des hameçons; Prises = tonnes; PUE = nombre de poissons capturés pour 100 hameçons mouillés.

MONTH	VESSELS COVERED	DAYS COVERED	ALBACORE		BIGEYE		YELLOWFIN		OTHERS	TOTAL	
			CATCH	CPUE	CATCH	CPUE	CATCH	CPUE	CATCH	CATCH	CPUE
MOIS	NBR. DE NAVIRES	NBR. DE JOURS	GERMON		THON OBÈSE		THON JAUNE		AUTRES	TOTAL	
			PRISES	PUE	PRISES	PUE	PRISES	PUE	PRISES	PRISES	PUE
JAN/02	30	260	172	1.46	21	0.11	19	0.10	32	245	1.87
FEB	33	477	346	1.55	56	0.18	37	0.12	58	497	2.04
MAR	35	445	241	1.18	54	0.21	42	0.16	57	394	1.78
APR	28	355	206	1.30	39	0.19	39	0.17	43	327	1.93
MAY	37	528	478	1.93	58	0.17	72	0.18	73	682	2.55
JUN	34	446	442	2.20	44	0.16	60	0.18	45	591	2.77
JUL	31	372	223	1.37	35	0.15	16	0.07	50	324	1.86
AUG	29	374	261	1.48	33	0.13	15	0.05	62	371	2.00
SEP	28	382	312	1.75	33	0.14	13	0.05	58	415	2.28
OCT	25	305	238	1.84	41	0.22	14	0.07	37	331	2.43
NOV	25	320	249	1.67	31	0.15	23	0.10	46	348	2.17
DEC	24	245	140	1.32	14	0.09	15	0.11	38	206	1.84
TOT	44	4,509	3,309	1.61	460	0.16	365	0.12	597	4,730	2.16
AVG	30	376	276	1.59	38	0.16	30	0.11	50	394	2.13
JAN/03	32	350	267	1.70	32	0.17	58	0.33	53	410	2.57
FEB	43	471	284	1.30	34	0.14	59	0.27	73	449	2.08
MAR	41	603	322	1.11	37	0.11	73	0.25	87	519	1.88
APR	39	448	220	1.12	27	0.11	50	0.21	67	364	1.87
MAY	36	497	291	1.28	33	0.11	70	0.25	90	484	2.16
JUN	41	583	359	1.34	38	0.11	45	0.13	69	512	1.94
JUL	45	612	223	0.81	30	0.09	21	0.06	66	340	1.16
AUG	39	537	206	0.83	19	0.07	12	0.04	55	292	1.19
SEP	46	595	259	0.95	38	0.12	20	0.07	66	384	1.39
OCT	45	575	222	0.84	29	0.08	35	0.12	65	350	1.33
NOV	43	573	243	0.90	13	0.04	32	0.11	93	381	1.34
DEC	43	489	164	0.70	10	0.03	14	0.06	58	245	1.04
TOT	56	6,333	3,060	1.05	341	0.10	489	0.15	842	4,732	1.62
AVG	41	528	255	1.07	28	0.10	41	0.16	70	394	1.66
JAN/04	40	359	67	0.40	13	0.07	22	0.18	52	155	1.01
FEB	39	491	68	0.29	18	0.07	32	0.21	50	168	0.81
MAR	43	595	85	0.29	25	0.08	56	0.24	56	222	0.79
APR	49	548	93	0.36	21	0.07	83	0.39	60	256	1.15
MAY	51	648	165	0.61	34	0.11	93	0.36	75	366	1.48
JUN	49	662	171	0.54	32	0.09	77	0.25	59	339	1.24
JUL	42	552	136	0.51	29	0.10	47	0.16	46	259	1.12
AUG	41	597	130	0.46	42	0.14	57	0.14	66	296	1.07
SEP	38	431	103	0.54	35	0.17	55	0.23	45	238	1.22
OCT	31	357	99	0.59	30	0.14	54	0.25	27	210	1.17
NOV	24	334	79	0.45	14	0.07	44	0.22	41	177	0.98
DEC	12	72	16	0.38	2	0.04	5	0.09	8	31	0.76
TOT	63	5,646	1,212	0.46	293	0.10	627	0.24	585	2,717	1.10
AVG	38	471	101	0.45	24	0.10	52	0.23	49	226	1.07

LONGLINE: JAPAN

The statistics in Table 7 and Figure 20 cover Japanese offshore and distant-water longliners in the Western and Central Pacific Ocean (Figure 1). All statistics were determined from data provided by the Fisheries Agency of Japan, grouped by 5° longitude, 5° latitude and month. Figure 21 presents estimates of annual catches in the Western and Central Pacific Ocean.

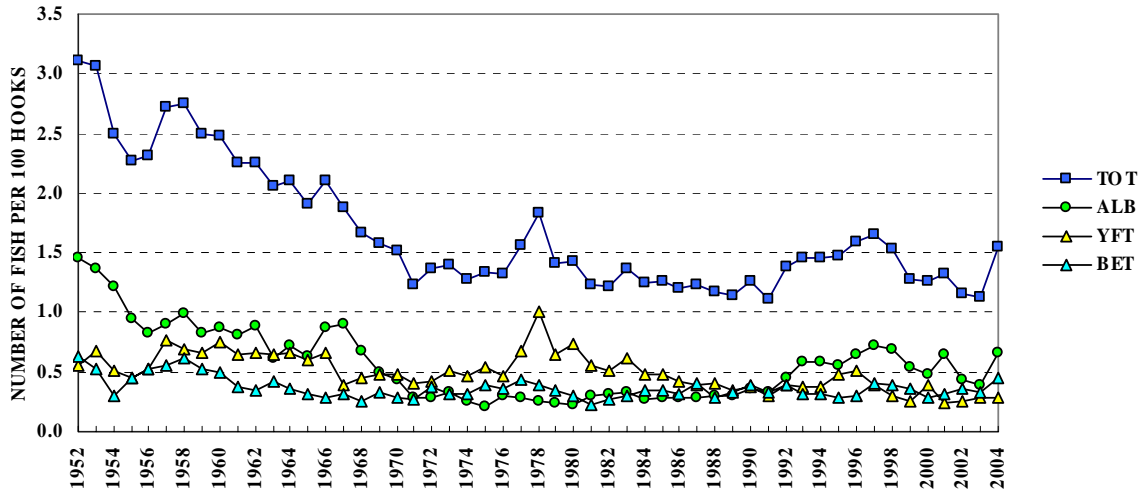


Figure 20. Japanese offshore and distant-water longliner catch rates (number of fish per 100 hooks) for albacore (ALB), bigeye (BET), yellowfin (YFT) and total catch (TOT)

Figure 20. Taux de prise (nombre de poissons capturés pour 100 hameçons) de germon (ALB), de thon obèse (BET), de thon jaune (YFT) et prises totales (TOT) des palangriers du Japon

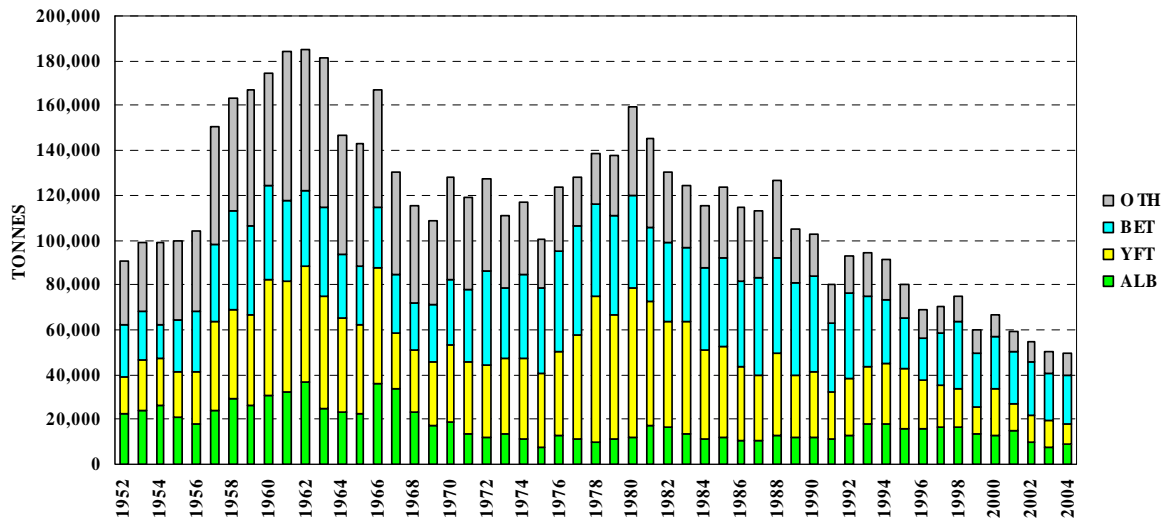


Figure 21. Catches (tonnes) of albacore (ALB), bigeye (BET), yellowfin (YFT) and other species (OTH) by Japanese offshore and distant-water longliners

Figure 21. Prises (en tonnes) de germon (ALB), de thon obèse (BET), de thon jaune (YFT) et d'autres espèces (OTH) des palangriers du Japon

Table 7. Catch statistics for Japanese offshore and distant-water longliners. Units: Days Covered = days on which hooks were set; Catch = tonnes; CPUE = number of fish per 100 hooks.

Tableau 7. Statistiques de prise des palangriers du Japon. Unités : Nbr. de Jours = nombre de jours de mise en place des hameçons; Prises = tonnes; PUE = nombre de poissons capturés pour 100 hameçons mouillés.

MONTH	VESSELS	HOOKS	ALBACORE		BIGEYE		YELLOWFIN		OTHERS	TOTAL	
			CATCH	CPUE	CATCH	CPUE	CATCH	CPUE	CATCH	CATCH	CPUE
MOIS	NBR. DE NAVIRES	NBR. DE HMEÇONS	GERMON		THON OBÈSE		THON JAUNE		AUTRES	TOTAL	
			PRISES	PUE	PRISES	PUE	PRISES	PUE	PRISES	PRISES	PUE
JAN/02	...	96,324	1,973	0.82	1,805	0.45	467	0.18	540	4,785	1.57
FEB	...	96,947	1,944	0.68	1,706	0.45	670	0.23	689	5,010	1.50
MAR	...	114,134	1,365	0.43	1,883	0.40	830	0.25	777	4,855	1.21
APR	...	148,967	1,981	0.54	1,860	0.31	865	0.21	1,023	5,729	1.18
MAY	...	185,907	1,696	0.43	1,638	0.22	589	0.12	1,205	5,127	0.88
JUN	...	169,632	1,237	0.34	1,575	0.24	914	0.20	1,119	4,846	0.89
JUL	...	142,507	740	0.32	1,423	0.28	933	0.25	1,048	4,143	0.98
AUG	...	120,986	536	0.26	1,483	0.33	1,209	0.37	393	3,620	1.02
SEP	...	100,768	224	0.14	1,832	0.47	1,358	0.45	475	3,889	1.16
OCT	...	84,107	356	0.23	1,734	0.49	879	0.36	551	3,520	1.19
NOV	...	87,445	936	0.54	1,662	0.52	752	0.28	406	3,756	1.43
DEC	...	92,403	996	0.63	1,686	0.47	893	0.33	511	4,086	1.57
TOT	...	1,440,126	13,983	0.44	20,288	0.36	10,360	0.25	8,737	53,368	1.16
AVG	...	120,011	1,165	0.45	1,691	0.39	863	0.27	728	4,447	1.21
JAN/03	...	109,899	942	0.50	2,033	0.50	887	0.27	920	4,781	1.45
FEB	...	109,370	646	0.34	2,319	0.52	1,056	0.34	852	4,874	1.37
MAR	...	125,562	636	0.22	2,226	0.44	1,096	0.37	983	4,941	1.16
APR	...	135,280	910	0.25	1,615	0.29	1,210	0.38	982	4,717	1.03
MAY	...	165,846	1,149	0.29	1,449	0.22	1,054	0.27	1,007	4,660	0.88
JUN	...	157,023	1,520	0.35	1,157	0.18	950	0.26	1,102	4,729	0.91
JUL	...	148,495	1,230	0.42	1,327	0.23	1,014	0.29	1,025	4,596	1.06
AUG	...	122,138	1,150	0.51	1,424	0.32	879	0.31	640	4,093	1.22
SEP	...	103,332	673	0.29	1,172	0.32	580	0.23	372	2,797	0.93
OCT	...	98,129	533	0.25	999	0.32	431	0.20	756	2,719	0.91
NOV	...	90,226	1,023	0.58	1,134	0.37	408	0.20	676	3,242	1.27
DEC	...	84,270	1,766	0.96	1,216	0.44	472	0.22	622	4,076	1.76
TOT	...	1,449,570	12,177	0.39	18,070	0.33	10,037	0.28	9,939	50,224	1.13
AVG	...	120,797	1,015	0.41	1,506	0.35	836	0.28	828	4,185	1.16
JAN/04	...	161,782	2,059	0.51	2,493	0.50	1,114	0.29	1,526	7,192	1.50
FEB	...	155,620	584	0.28	3,183	0.51	1,073	0.25	1,158	5,999	1.21
MAR	...	136,368	444	0.29	1,964	0.40	1,325	0.30	1,282	5,015	1.16
APR	...	128,185	1,956	0.63	1,508	0.36	735	0.20	996	5,195	1.32
MAY	...	126,227	2,302	0.75	1,436	0.29	429	0.11	731	4,899	1.24
JUN	...	98,061	2,126	0.92	1,637	0.43	662	0.22	814	5,238	1.72
JUL	...	83,976	1,799	1.16	1,031	0.45	718	0.36	727	4,274	2.12
AUG	...	63,117	1,123	1.11	1,205	0.54	1,289	0.66	198	3,815	2.39
SEP	...	51,351	778	0.84	855	0.59	691	0.50	206	2,530	2.02
OCT	...	42,892	568	0.78	1,004	0.58	436	0.37	154	2,162	1.83
NOV	...	27,307	706	0.88	778	0.72	159	0.20	198	1,840	1.92
DEC	...	11,749	578	2.00	205	0.46	43	0.11	55	881	2.63
TOT	...	1,086,634	15,021	0.66	17,299	0.45	8,674	0.28	8,046	49,040	1.55
AVG	...	90,553	1,252	0.85	1,442	0.49	723	0.30	670	4,087	1.76

LONGLINE: NEW CALEDONIA

The statistics in Table 8 were determined from logsheet data held at SPC on 30 June 2005. Coverage rates are 69 per cent for 2003 and 94 per cent for 2003; the statistics in Table 8 have not been raised to represent complete coverage. Figure 22 presents catch rates for albacore, bigeye, yellowfin and all species combined. Figure 23 presents estimates of annual catches.

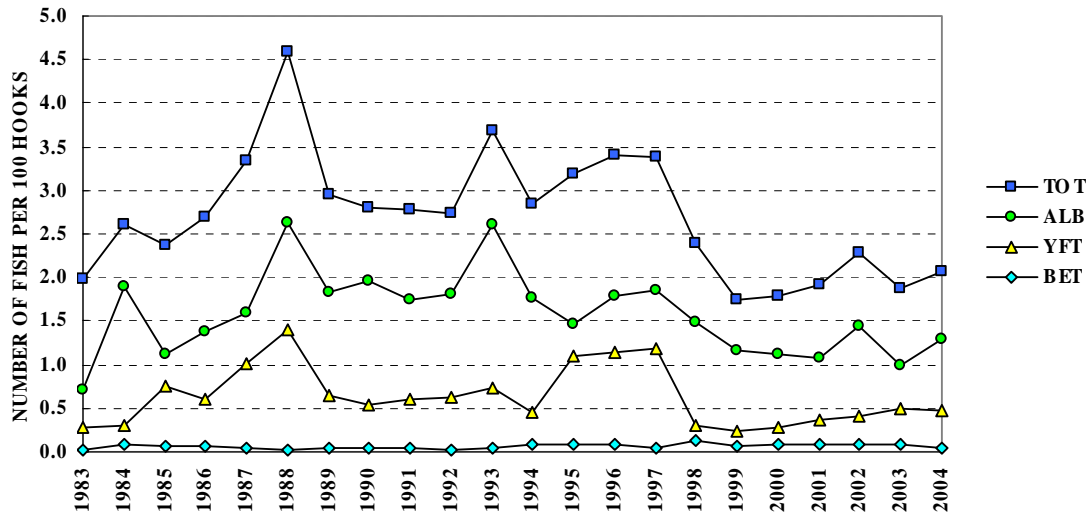


Figure 22. New Caledonian longliner catch rates (number of fish per 100 hooks) for albacore (ALB), bigeye (BET), yellowfin (YFT) and total catch (TOT)

Figure 22. Taux de prise (nombre de poissons capturés pour 100 hameçons) de germon (ALB), de thon obèse (BET), de thon jaune (YFT) et prises totales (TOT) des palangriers de Nouvelle-Calédonie

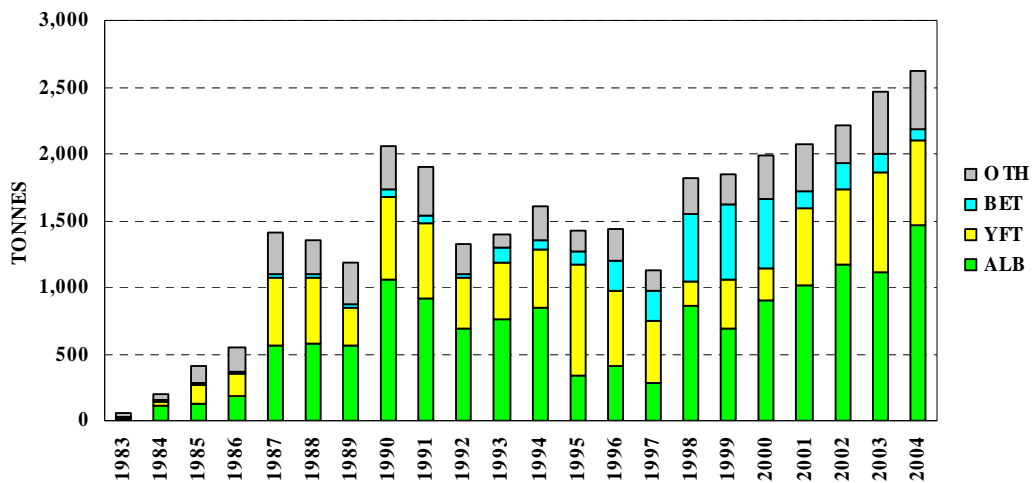


Figure 23. Catches (tonnes) of albacore (ALB), bigeye (BET), yellowfin (YFT) and other species (OTH) by New Caledonian longliners

Figure 23. Prises (en tonnes) de germon (ALB), de thon obèse (BET), de thon jaune (YFT) et d'autres espèces (OTH) des palangriers de Nouvelle-Calédonie

Table 8. Catch statistics for New Caledonian longliners. Units: Days Covered = days on which hooks were set; Catch = tonnes; CPUE = number of fish per 100 hooks.

Tableau 8. Statistiques de prise des palangriers de Nouvelle-Calédonie. Unités : Nbr. de Jours = nombre de jours de mise en place des hameçons; Prises = tonnes; PUE = nombre de poissons capturés pour 100 hameçons mouillés.

MONTH	VESSELS COVERED	DAYS COVERED	ALBACORE		BIGEYE		YELLOWFIN		OTHERS	TOTAL	
			CATCH	CPUE	CATCH	CPUE	CATCH	CPUE		CATCH	CPUE
MOIS	NBR. DE NAVIRES	NBR. DE JOURS	GERMON		THON OBÈSE		THON JAUNE		AUTRES	TOTAL	
			PRISES	PUE	PRISES	PUE	PRISES	PUE		PRISES	PUE
JAN/03	15	153	65	1.32	10	0.11	27	0.43	19	122	2.18
FEB	17	172	72	1.29	6	0.06	29	0.38	22	130	2.01
MAR	15	182	32	0.51	13	0.11	50	0.61	28	123	1.52
APR	16	226	41	0.52	19	0.15	62	0.65	29	151	1.61
MAY	16	209	39	0.57	17	0.13	62	0.71	26	144	1.69
JUN	16	222	63	0.84	12	0.09	55	0.61	30	160	1.83
JUL	15	155	50	0.95	5	0.06	37	0.56	22	115	1.87
AUG	14	190	80	1.31	4	0.03	40	0.50	24	148	2.08
SEP	12	165	55	0.98	2	0.02	24	0.33	25	106	1.68
OCT	20	220	77	1.12	4	0.03	41	0.46	29	151	1.90
NOV	23	275	102	1.15	8	0.05	33	0.28	44	186	1.81
DEC	19	200	98	1.69	6	0.05	27	0.33	27	158	2.47
TOT	25	2,369	774	1.00	107	0.08	488	0.49	324	1,694	1.87
AVG	17	197	64	1.02	9	0.07	41	0.49	27	141	1.89
JAN/04	23	275	145	1.67	8	0.05	53	0.49	43	249	2.65
FEB	23	279	111	1.27	8	0.04	66	0.58	31	216	2.14
MAR	24	251	41	0.53	7	0.05	37	0.37	24	109	1.16
APR	22	306	66	0.68	18	0.09	46	0.38	28	158	1.33
MAY	22	285	42	0.48	11	0.06	46	0.43	39	137	1.23
JUN	24	263	132	1.55	13	0.09	38	0.36	36	220	2.23
JUL	24	310	171	1.68	8	0.05	58	0.48	29	266	2.38
AUG	21	318	186	1.96	6	0.03	98	0.81	28	318	2.97
SEP	23	260	81	1.08	5	0.03	31	0.28	29	146	1.62
OCT	22	299	108	1.15	3	0.01	61	0.50	35	207	1.88
NOV	21	252	117	1.47	4	0.03	53	0.51	43	217	2.33
DEC	18	221	146	2.22	2	0.01	40	0.46	41	229	3.07
TOT	27	3,319	1,346	1.30	93	0.05	628	0.48	405	2,471	2.07
AVG	22	277	112	1.31	8	0.05	52	0.47	34	206	2.08
JAN/05	20	251	76	0.95	5	0.04	52	0.44	31	164	1.75
FEB	23	265	76	0.84	6	0.04	65	0.51	28	175	1.65
MAR	21	225	27	0.35	8	0.06	87	0.80	17	139	1.39
APR	7	30	12	1.08	3	0.16	25	1.64	3	43	3.05
MAY	5	37	0	1.64	0	0.03	0	0.11	0	0	1.96
JUN	5	58	0	1.41	0	0.02	0	0.15	0	0	1.79
JUL	0	—	—	—	—	—	—	—	—	—	—
AUG	0	—	—	—	—	—	—	—	—	—	—
SEP	0	—	—	—	—	—	—	—	—	—	—
OCT	0	—	—	—	—	—	—	—	—	—	—
NOV	0	—	—	—	—	—	—	—	—	—	—
DEC	0	—	—	—	—	—	—	—	—	—	—
TOT	24	866	192	0.83	22	0.05	229	0.57	78	521	1.68
AVG	14	144	32	1.05	4	0.06	38	0.61	13	87	1.93

LONGLINE: PAPUA NEW GUINEA

The statistics in Table 9, which cover Papua New Guinea longliners, were determined from logsheet data held at SPC on 30 June 2005. Coverage rates are 76 per cent for 2003 and 64 per cent for 2004; the statistics in Table 9 have not been raised to represent complete coverage. Figure 24 presents catch rates for albacore, bigeye, yellowfin and all species combined. Figure 25 presents estimates of annual catches; estimates for 1998–2004 include shark longliners.

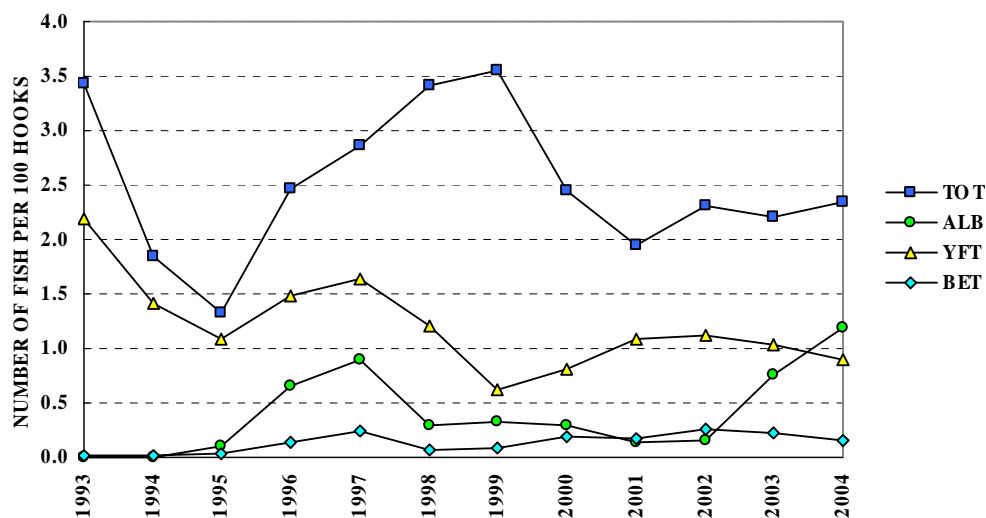


Figure 24. Papua New Guinea longliner catch rates (number of fish per 100 hooks) for albacore (ALB), bigeye (BET), yellowfin (YFT) and total catch (TOT)

Figure 24. Taux de prise (nombre de poissons capturés pour 100 hameçons) de germon (ALB), de thon obèse (BET), de thon jaune (YFT) et prises totales (TOT) des palangriers de Papouasie-Nouvelle-Guinée

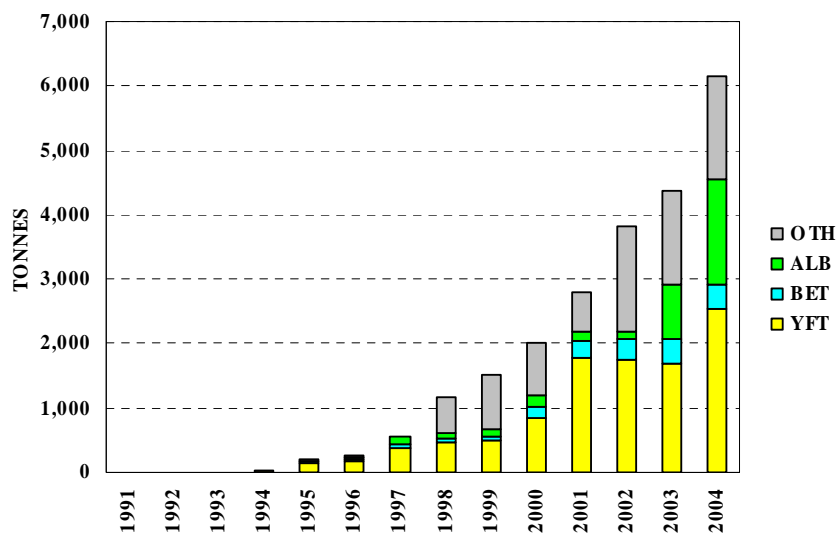


Figure 25. Catches (tonnes) of albacore (ALB), bigeye (BET), yellowfin (YFT) and other species (OTH) by Papua New Guinea longliners

Figure 25. Prises (en tonnes) de thon obèse (BET), de thon jaune (YFT) et d'autres espèces (OTH) des palangriers de Papouasie-Nouvelle-Guinée

Table 9. Catch statistics for Papua New Guinea longliners. Units: Days Covered = days on which hooks were set; Catch = tonnes; CPUE = number of fish per 100 hooks.

Tableau 9. Statistiques de prise des palangriers de Papouasie-Nouvelle-Guinée. Unités : Nbr. de Jours = nombre de jours de mise en place des hameçons; Prises = tonnes; PUE = nombre de poissons capturés pour 100 hameçons mouillés.

MONTH	VESSELS COVERED	DAYS COVERED	ALBACORE		BIGEYE		YELLOWFIN		OTHERS	TOTAL	
			CATCH	CPUE	CATCH	CPUE	CATCH	CPUE	CATCH	CATCH	CPUE
MOIS	NBR. DE NAVIRES	NBR. DE JOURS	GERMON		THON OBÈSE		THON JAUNE		AUTRES	TOTAL	
			PRISES	PUE	PRISES	PUE	PRISES	PUE	PRISES	PRISES	PUE
JAN/03	24	437	11	0.12	37	0.32	156	1.28	37	241	2.01
FEB	24	353	13	0.21	20	0.22	101	1.08	29	163	1.78
MAR	34	407	35	0.48	19	0.17	94	0.86	28	176	1.73
APR	31	518	104	1.16	34	0.23	141	1.06	43	321	2.74
MAY	34	527	114	1.18	30	0.20	180	1.25	33	356	2.81
JUN	32	565	143	1.34	40	0.26	173	1.06	31	388	2.84
JUL	32	516	93	0.89	35	0.22	165	1.16	26	318	2.44
AUG	30	561	67	0.65	38	0.25	148	0.95	28	281	2.05
SEP	30	536	48	0.52	35	0.23	142	0.94	34	258	1.89
OCT	32	502	42	0.43	26	0.17	170	1.17	22	259	1.90
NOV	32	554	123	1.05	43	0.22	164	0.98	28	359	2.39
DEC	27	477	65	0.62	32	0.18	113	0.69	24	235	1.59
TOT	42	5,953	857	0.76	390	0.22	1,747	1.04	360	3,354	2.21
AVG	30	496	71	0.72	32	0.22	146	1.04	30	280	2.18
JAN/04	24	449	11	0.11	28	0.15	135	0.75	27	200	1.14
FEB	18	203	21	0.48	19	0.21	63	0.78	7	110	1.53
MAR	12	168	47	1.22	10	0.14	51	0.82	8	116	2.25
APR	19	242	86	1.55	15	0.16	88	1.09	12	201	2.90
MAY	28	456	83	0.75	41	0.21	182	1.13	17	324	2.18
JUN	30	503	191	1.60	31	0.16	209	1.23	17	449	3.09
JUL	33	616	202	1.38	43	0.19	181	0.87	15	441	2.50
AUG	32	608	249	1.71	36	0.16	192	0.88	14	492	2.83
SEP	32	522	222	1.80	21	0.11	121	0.59	17	381	2.58
OCT	33	570	161	1.12	23	0.10	205	0.87	25	414	2.20
NOV	30	523	146	1.12	22	0.09	268	1.16	24	460	2.49
DEC	29	502	121	1.00	33	0.14	156	0.68	19	329	1.90
TOT	39	5,362	1,540	1.19	321	0.15	1,851	0.90	202	3,915	2.34
AVG	27	447	128	1.15	27	0.15	154	0.90	17	326	2.30
JAN/05	29	516	132	1.10	27	0.12	149	0.73	28	336	2.06
FEB	24	366	94	1.02	26	0.15	105	0.67	24	249	1.98
MAR	25	413	82	0.78	28	0.15	89	0.48	15	214	1.48
APR	15	183	80	1.66	15	0.17	32	0.38	4	131	2.27
MAY	0	—	—	—	—	—	—	—	—	—	—
JUN	0	—	—	—	—	—	—	—	—	—	—
JUL	0	—	—	—	—	—	—	—	—	—	—
AUG	0	—	—	—	—	—	—	—	—	—	—
SEP	0	—	—	—	—	—	—	—	—	—	—
OCT	0	—	—	—	—	—	—	—	—	—	—
NOV	0	—	—	—	—	—	—	—	—	—	—
DEC	0	—	—	—	—	—	—	—	—	—	—
TOT	32	1,478	389	1.06	96	0.14	376	0.60	70	931	1.90
AVG	23	370	97	1.14	24	0.15	94	0.57	18	233	1.95

LONGLINE: SAMOA

The statistics in Table 10, which cover Samoan longliners, were determined from logsheet data held at SPC on 30 June 2005. Coverage rates are 56 per cent for 2003 and 68 per cent for 2004; the statistics in Table 10 have not been raised to represent complete coverage. Figure 26 presents catch rates for albacore, bigeye, yellowfin and all species combined. Figure 27 presents estimates of annual catches.

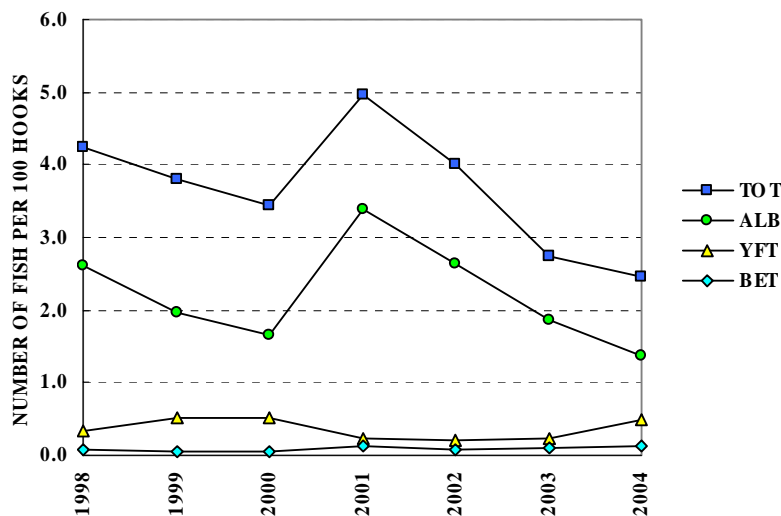


Figure 26. Samoan longliner catch rates (number of fish per 100 hooks) for albacore (ALB), bigeye (BET), yellowfin (YFT) and total catch (TOT)

Figure 26. Taux de prise (nombre de poissons capturés pour 100 hameçons) de germon (ALB), de thon obèse (BET), de thon jaune (YFT) et prises totales (TOT) des palangriers de Samoa

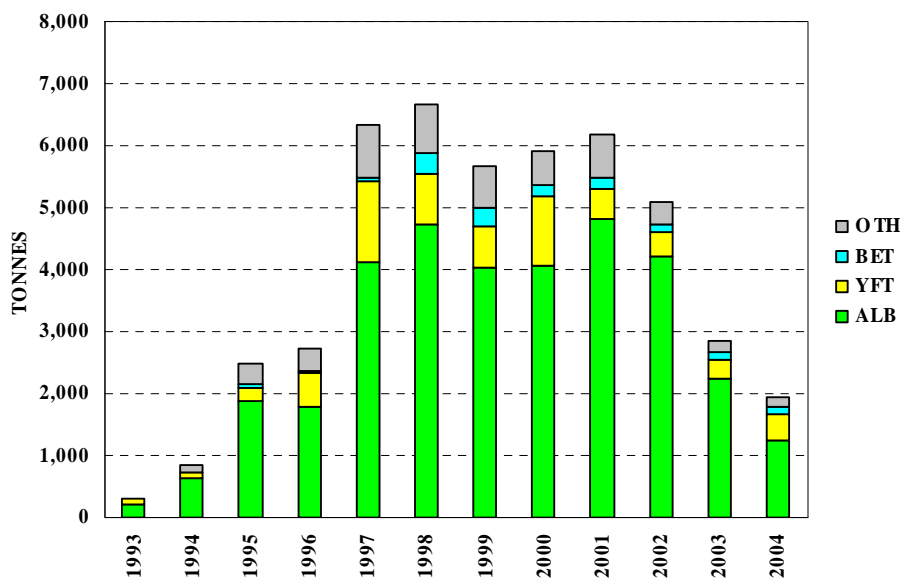


Figure 27. Catches (tonnes) of albacore (ALB), bigeye (BET), yellowfin (YFT) and other species (OTH) by Samoan longliners

Figure 27. Prises (en tonnes) de thon obèse (BET), de thon jaune (YFT) et d'autres espèces (OTH) des palangriers de Samoa

Table 10. Catch statistics for Samoan longliners. Units: Days Covered = days on which hooks were set; Catch = tonnes; CPUE = number of fish per 100 hooks.

Tableau 10. Statistiques de prise des palangriers de Samoa. Unités : Nbr. de Jours = nombre de jours de mise en place des hameçons; Prises = tonnes; PUE = nombre de poissons capturés pour 100 hameçons mouillés.

MONTH	VESSELS COVERED	DAYS COVERED	ALBACORE		BIGEYE		YELLOWFIN		OTHERS	TOTAL	
			CATCH	CPUE	CATCH	CPUE	CATCH	CPUE		CATCH	CPUE
MOIS	NBR. DE NAVIRES	NBR. DE JOURS	GERMON		THON OBÈSE		THON JAUNE		AUTRES	TOTAL	
			PRISES	PUE	PRISES	PUE	PRISES	PUE		PRISES	PUE
JAN/03	12	76	31	1.73	3	0.18	5	0.28	23	62	3.98
FEB	12	101	44	1.16	2	0.04	4	0.13	16	66	2.50
MAR	13	171	44	0.79	3	0.05	9	0.16	50	105	1.37
APR	13	149	55	1.36	3	0.08	12	0.32	36	106	2.11
MAY	17	147	80	2.04	6	0.15	20	0.54	42	149	3.14
JUN	21	169	91	2.25	5	0.12	15	0.38	47	158	3.20
JUL	30	194	78	2.06	5	0.13	10	0.29	63	156	3.14
AUG	28	235	85	1.66	5	0.10	9	0.19	69	168	2.48
SEP	30	262	119	2.36	6	0.11	10	0.20	74	208	3.25
OCT	26	234	108	2.35	4	0.10	6	0.14	42	160	2.94
NOV	33	261	98	2.47	4	0.10	5	0.14	37	144	3.07
DEC	25	177	71	2.15	3	0.09	5	0.15	33	111	2.78
TOT	52	2,176	903	1.86	49	0.10	110	0.24	531	1,593	2.73
AVG	22	181	75	1.87	4	0.10	9	0.24	44	133	2.83
JAN/04	22	158	30	0.88	4	0.11	13	0.33	35	83	1.76
FEB	11	117	22	0.83	5	0.18	7	0.24	15	49	1.48
MAR	14	139	34	1.02	9	0.26	8	0.21	32	83	1.88
APR	13	126	39	1.14	4	0.11	20	0.51	19	82	1.99
MAY	13	118	38	1.40	6	0.20	29	0.92	16	88	2.77
JUN	15	146	83	2.40	7	0.19	23	0.57	30	143	3.52
JUL	26	182	75	2.19	5	0.14	50	1.25	64	194	4.36
AUG	34	188	46	1.58	3	0.10	43	1.27	50	142	3.67
SEP	26	183	43	1.25	5	0.14	24	0.61	45	117	2.55
OCT	28	193	54	1.32	4	0.10	10	0.22	36	105	2.02
NOV	23	221	61	1.29	4	0.07	7	0.14	41	113	1.88
DEC	28	217	55	1.24	5	0.11	10	0.19	54	124	2.03
TOT	53	1,988	581	1.38	61	0.14	245	0.50	437	1,323	2.46
AVG	21	166	48	1.38	5	0.14	20	0.54	36	110	2.49
JAN/05	16	113	29	1.24	4	0.12	3	0.10	30	66	1.98
FEB	10	46	12	1.28	1	0.10	2	0.14	8	24	1.90
MAR	0	—	—	—	—	—	—	—	—	—	—
APR	0	—	—	—	—	—	—	—	—	—	—
MAY	0	—	—	—	—	—	—	—	—	—	—
JUN	0	—	—	—	—	—	—	—	—	—	—
JUL	0	—	—	—	—	—	—	—	—	—	—
AUG	0	—	—	—	—	—	—	—	—	—	—
SEP	0	—	—	—	—	—	—	—	—	—	—
OCT	0	—	—	—	—	—	—	—	—	—	—
NOV	0	—	—	—	—	—	—	—	—	—	—
DEC	0	—	—	—	—	—	—	—	—	—	—
TOT	17	159	41	1.25	5	0.11	5	0.11	38	90	1.96
AVG	13	80	21	1.26	2	0.11	3	0.12	19	45	1.94

LONGLINE: CHINESE TAIPEI OFFSHORE FLEET, EAST OF 130°E

The statistics in Table 11, which cover the Chinese Taipei offshore longliners fishing in the Western and Central Pacific Ocean (Figure 1), east of 130°E, were determined from logsheet data held at SPC on 30 June 2005. The coverage rate is 41 per cent for 2003 and 38 per cent for 2004; the statistics in Table 11 have not been raised to represent complete coverage. Figure 28 presents catch rates for bigeye, yellowfin and all species combined. The catch rates were determined from logsheet data held at SPC. Figure 29 presents estimates of annual catches by offshore vessels east of 130°E; catches of 'other' species are not included for most years.

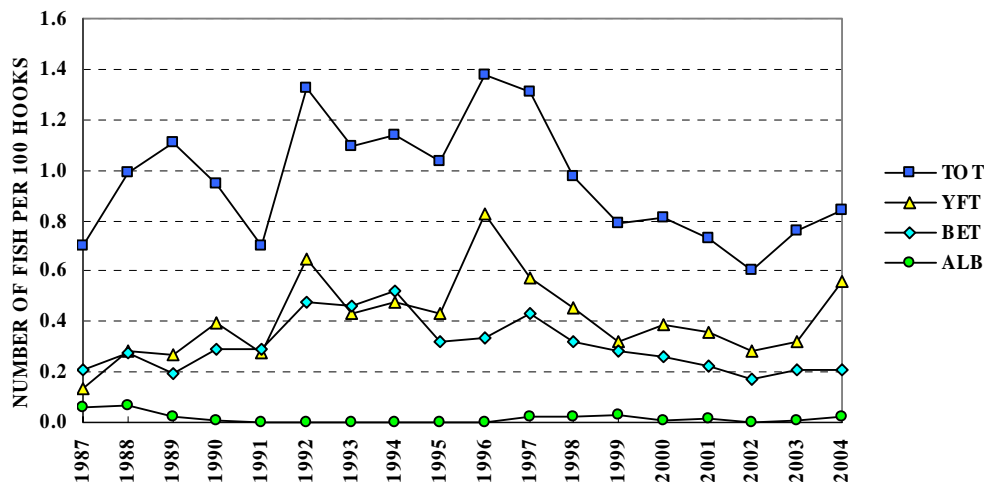


Figure 28. Chinese Taipei offshore longliner catch rates (number of fish per 100 hooks) for bigeye (BET), yellowfin (YFT) and total catch (TOT), east of 130°E

Figure 28. Taux de prise (nombre de poissons capturés pour 100 hameçons) de thon obèse (BET), de thon jaune (YFT) et prises totales (TOT) des palangriers de Taïwan pêchant au large à l'est de 130°E

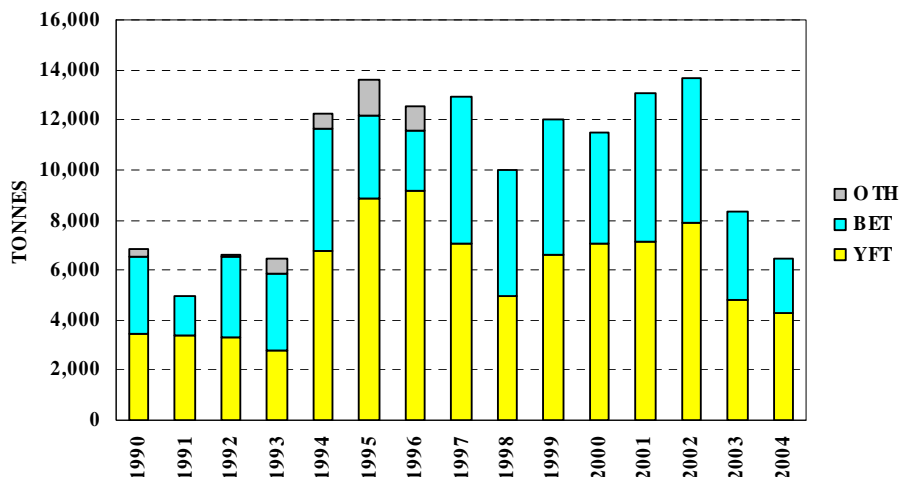


Figure 29. Catches (tonnes) of bigeye (BET), yellowfin (YFT) and other species (OTH) by Chinese Taipei offshore longliners, east of 130°E

Figure 29. Prises (en tonnes) de thon obèse (BET), de thon jaune (YFT) et d'autres espèces (OTH) des palangriers de Taïwan pêchant au large, à l'est de 130°E

Table 11. Catch statistics for Chinese Taipei offshore longliners, east of 130°E. Units: Days Covered = days on which hooks were set; Catch = tonnes; CPUE = number of fish per 100 hooks.

Tableau 11. Statistiques de prise des palangriers de Taïwan pêchant au large, à l'est de 130°E. Unités : Nbr. de Jours = nombre de jours de mise en place des hameçons; Prises = tonnes; PUE = nombre de poissons capturés pour 100 hameçons mouillés.

MONTH	VESSELS COVERED	DAYS COVERED	ALBACORE		BIGEYE		YELLOWFIN		OTHERS	TOTAL	
			CATCH	CPUE	CATCH	CPUE	CATCH	CPUE	CATCH	CATCH	CPUE
MOIS	NBR. DE NAVIRES	NBR. DE JOURS	GERMON		THON OBÈSE		THON JAUNE		AUTRES	TOTAL	
			PRISES	PUE	PRISES	PUE	PRISES	PUE	PRISES	PRISES	PUE
JAN/03	50	691	0	0.00	88	0.26	161	0.60	47	296	1.03
FEB	38	407	3	0.03	35	0.17	40	0.22	39	116	0.62
MAR	41	519	3	0.02	48	0.18	59	0.29	48	157	0.69
APR	57	711	0	0.00	88	0.23	113	0.39	101	301	0.97
MAY	59	786	2	0.01	76	0.17	129	0.41	134	341	1.01
JUN	62	878	1	0.00	131	0.26	125	0.35	152	408	1.02
JUL	93	1,330	2	0.00	182	0.22	158	0.27	158	500	0.73
AUG	101	1,361	2	0.00	182	0.22	148	0.25	134	466	0.68
SEP	69	845	2	0.01	131	0.26	81	0.23	51	266	0.64
OCT	41	496	0	0.00	61	0.21	58	0.27	27	147	0.59
NOV	55	730	0	0.00	79	0.16	97	0.27	39	216	0.53
DEC	68	871	1	0.00	71	0.14	117	0.31	44	233	0.58
TOT	150	9,625	16	0.01	1,171	0.21	1,287	0.32	974	3,448	0.76
AVG	61	802	1	0.01	98	0.21	107	0.32	81	287	0.76
JAN/04	53	651	0	0.00	56	0.16	72	0.26	30	159	0.55
FEB	43	492	0	0.00	32	0.12	79	0.39	18	129	0.58
MAR	57	727	1	0.01	120	0.30	86	0.28	39	245	0.72
APR	49	477	0	0.00	77	0.29	67	0.36	26	170	0.78
MAY	29	387	0	0.00	34	0.15	116	0.72	7	157	0.91
JUN	25	322	1	0.02	26	0.16	109	0.83	4	142	1.03
JUL	37	481	7	0.06	70	0.31	145	0.84	12	234	1.25
AUG	47	535	4	0.03	78	0.26	90	0.41	13	185	0.73
SEP	45	679	1	0.01	77	0.20	189	0.69	11	278	0.93
OCT	50	573	5	0.03	66	0.23	136	0.56	11	218	0.85
NOV	40	448	2	0.01	47	0.15	128	0.67	3	180	0.84
DEC	49	710	4	0.01	79	0.15	251	0.82	4	337	0.98
TOT	113	6,482	26	0.02	763	0.21	1,468	0.56	178	2,435	0.84
AVG	44	540	2	0.02	64	0.21	122	0.57	15	203	0.85
JAN/05	44	516	4	0.03	49	0.15	148	0.71	3	204	0.89
FEB	26	216	0	0.00	23	0.18	36	0.44	2	62	0.63
MAR	20	208	0	0.00	37	0.29	49	0.54	0	87	0.83
APR	0	—	—	—	—	—	—	—	—	—	—
MAY	0	—	—	—	—	—	—	—	—	—	—
JUN	0	—	—	—	—	—	—	—	—	—	—
JUL	0	—	—	—	—	—	—	—	—	—	—
AUG	0	—	—	—	—	—	—	—	—	—	—
SEP	0	—	—	—	—	—	—	—	—	—	—
OCT	0	—	—	—	—	—	—	—	—	—	—
NOV	0	—	—	—	—	—	—	—	—	—	—
DEC	0	—	—	—	—	—	—	—	—	—	—
TOT	49	940	4	0.01	110	0.19	233	0.61	5	352	0.82
AVG	30	313	1	0.01	37	0.21	78	0.56	2	117	0.78

LONGLINE: CHINESE TAIPEI DISTANT-WATER FLEET

The statistics in Table 12 and Figure 30, which cover distant-water Chinese Taipei longliners fishing in the Western and Central Pacific Ocean (Figure 1), were determined from data provided by the Overseas Fisheries Development Council, grouped by 5° longitude, 5° latitude and month. Figure 31 presents estimates of annual catches by distant-water Chinese Taipei longliners in the Western and Central Pacific Ocean.

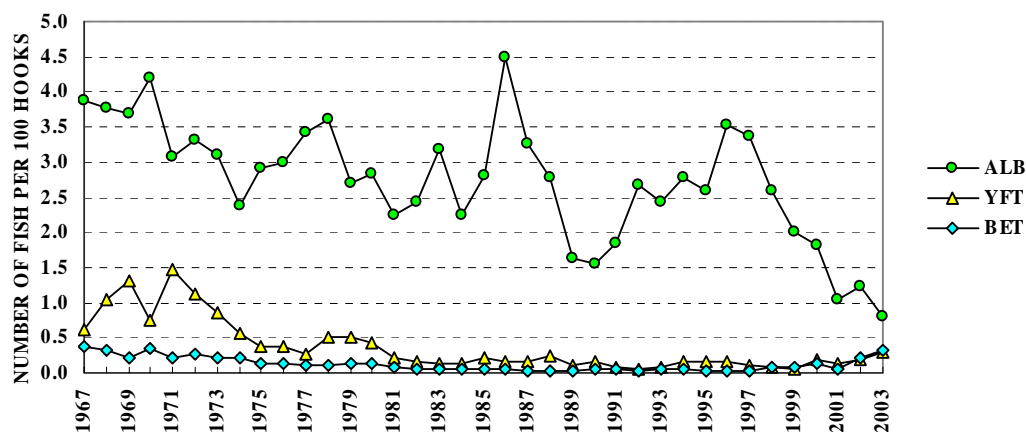


Figure 30. Chinese Taipei distant-water longliner catch rates (number of fish per 100 hooks) for albacore (ALB), bigeye (BET) and yellowfin (YFT)

Figure 30. Taux de prise (nombre de poissons capturés pour 100 hameçons) de germon (ALB), de thon obèse (BET) et de thon jaune (YFT) des palangriers hauturiers de Taïwan

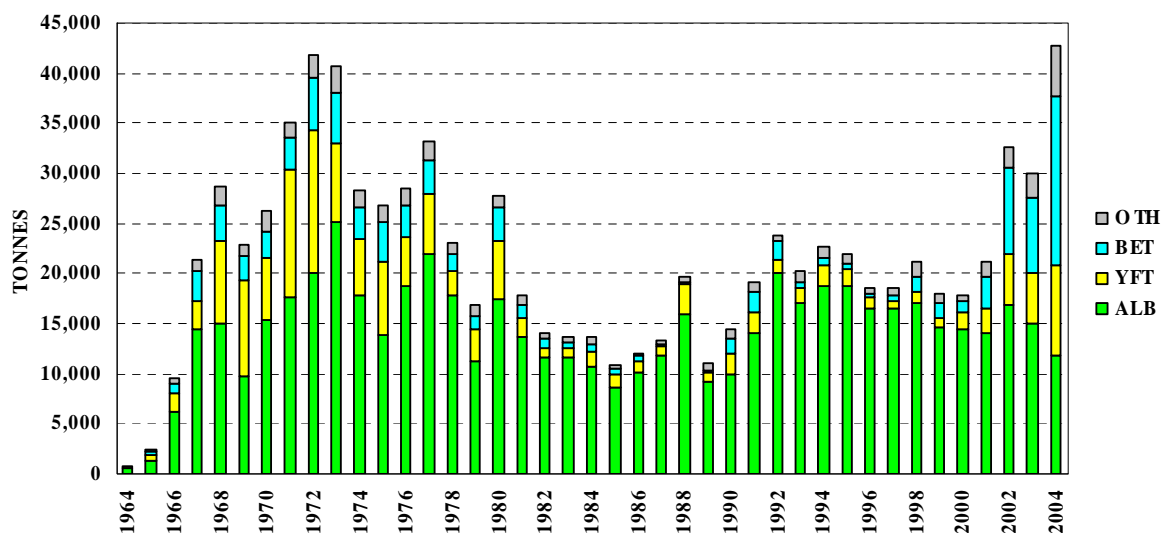


Figure 31. Catches (tonnes) of albacore (ALB), bigeye (BET), yellowfin (YFT) and other species (OTH) by Chinese Taipei distant-water longliners

Figure 31. Prises (en tonnes) de germon (ALB), de thon obèse (BET), de thon jaune (YFT) et d'autres espèces (OTH) des palangriers hauturiers de Taïwan

Table 12. Catch statistics for Chinese Taipei distant-water longliners. Units: Days Covered = days on which hooks were set; Catch = tonnes; CPUE = number of fish per 100 hooks.

Tableau 12. Statistiques de prise des palangriers hauturiers de Taïwan. Unités : Nbr. de Jours = nombre de jours de mise en place des hameçons; Prises = tonnes; PUE = nombre de poissons capturés pour 100 hameçons mouillés.

MONTH	VESSELS	HOOKS	ALBACORE		BIGEYE		YELLOWFIN		OTHERS	TOTAL	
			CATCH	CPUE	CATCH	CPUE	CATCH	CPUE	CATCH	CATCH	CPUE
MOIS	NBR. DE NAVIRES	NBR. DE HMEÇONS	GERMON		THON OBÈSE		THON JAUNE		AUTRES	TOTAL	
			PRISES	PUE	PRISES	PUE	PRISES	PUE	PRISES	PRISES	PUE
JAN/01	...	69,125	1,414	1.17	58	0.03	164	0.08	229	1,866	1.58
FEB	...	67,997	1,223	1.07	157	0.06	199	0.09	355	1,934	1.49
MAR	...	67,268	818	0.70	139	0.06	446	0.20	555	1,958	1.32
APR	...	47,283	621	0.75	245	0.12	243	0.15	602	1,711	1.53
MAY	...	49,953	837	0.94	251	0.11	203	0.12	587	1,879	1.47
JUN	...	62,073	1,369	1.34	190	0.08	158	0.08	691	2,408	1.94
JUL	...	55,970	1,583	1.80	91	0.04	161	0.10	730	2,565	2.44
AUG	...	54,765	1,813	2.17	25	0.01	185	0.11	530	2,553	2.74
SEP	...	47,141	426	0.66	18	0.01	256	0.17	671	1,372	1.46
OCT	...	36,645	208	0.30	18	0.01	219	0.19	607	1,052	1.26
NOV	...	30,221	70	0.09	25	0.02	130	0.13	374	598	0.81
DEC	...	16,949	98	0.32	4	0.01	36	0.06	191	328	1.03
TOT	...	605,389	10,481	1.05	1,220	0.05	2,401	0.12	6,122	20,224	1.67
AVG	...	50,449	873	0.94	102	0.05	200	0.12	510	1,685	1.59
JAN/02	...	53,480	631	0.86	148	0.07	189	0.12	268	1,236	1.19
FEB	...	55,446	726	0.87	86	0.05	310	0.16	243	1,366	1.26
MAR	...	39,666	290	0.47	253	0.15	303	0.21	245	1,091	1.06
APR	...	49,950	606	0.88	553	0.26	332	0.19	364	1,856	1.54
MAY	...	77,284	1,558	1.36	384	0.12	332	0.12	469	2,744	1.79
JUN	...	120,257	3,151	1.84	518	0.11	507	0.14	605	4,780	2.27
JUL	...	117,108	2,501	1.64	1,191	0.25	696	0.22	760	5,148	2.31
AUG	...	89,835	1,823	1.45	914	0.26	525	0.21	642	3,904	2.16
SEP	...	45,049	462	0.75	690	0.39	332	0.30	574	2,058	1.85
OCT	...	45,998	666	0.86	652	0.36	368	0.31	565	2,250	1.91
NOV	...	35,313	316	0.57	621	0.46	393	0.38	410	1,739	1.81
DEC	...	10,485	118	0.63	164	0.46	42	0.12	108	433	1.44
TOT	...	739,870	12,850	1.22	6,174	0.21	4,327	0.20	5,254	28,604	1.86
AVG	...	61,656	1,071	1.01	514	0.24	361	0.21	438	2,384	1.72
JAN/03	...	63,359	790	0.71	945	0.37	545	0.26	1,150	3,430	1.66
FEB	...	81,320	374	0.29	1,044	0.43	542	0.24	590	2,549	1.12
MAR	...	73,513	675	0.57	1,092	0.48	369	0.18	595	2,731	1.41
APR	...	70,001	494	0.48	1,202	0.47	868	0.27	601	3,165	1.40
MAY	...	54,021	717	0.82	750	0.29	899	0.40	814	3,179	1.78
JUN	...	62,973	779	0.86	697	0.26	935	0.39	681	3,093	1.74
JUL	...	59,257	1,016	1.23	494	0.18	792	0.39	591	2,893	2.09
AUG	...	64,827	1,391	1.93	336	0.15	838	0.38	337	2,902	2.61
SEP	...	29,731	276	0.70	219	0.22	140	0.15	174	810	1.14
OCT	...	15,273	51	0.25	148	0.22	127	0.32	67	394	0.89
NOV	...	1,550	0	0.00	32	0.56	3	0.06	2	37	0.66
DEC	...	10,485	118	0.63	164	0.46	42	0.12	108	433	1.44
TOT	...	586,310	6,683	0.81	7,123	0.33	6,101	0.30	5,709	25,617	1.64
AVG	...	48,859	557	0.71	594	0.34	508	0.26	476	2,135	1.50

POLE-AND-LINE: JAPAN

The statistics in Table 13 and Figure 32 cover Japanese offshore and distant-water pole-and-line vessels in the Western and Central Pacific Ocean (Figure 1). All statistics were determined from data provided by the Fisheries Agency of Japan, grouped by 1° longitude, 1° latitude and month. Figure 33 presents estimates of annual catches.

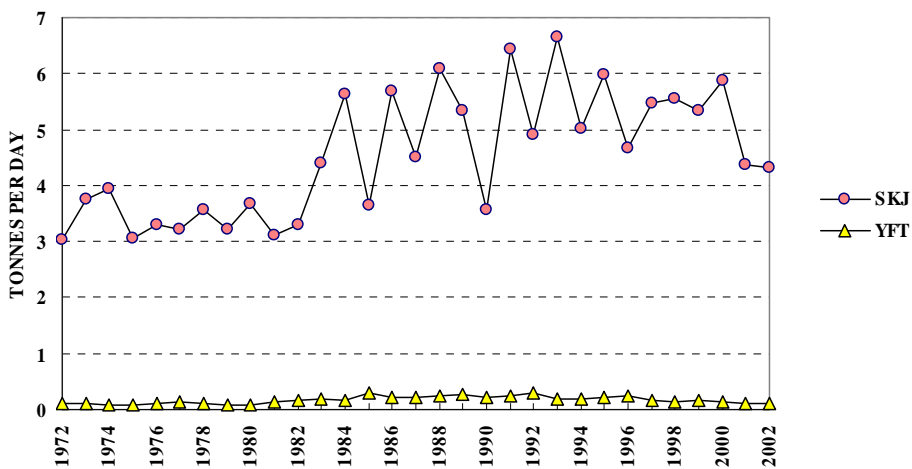


Figure 32. Japanese pole-and-line catch rates (tonnes per day fished or searched) for skipjack (SKJ) and yellowfin (YFT)

Figure 32. Taux de prise (nombre de tonnes par jour de pêche ou de recherche du poisson) de bonite (SKJ) et de thon jaune (YFT) des canneurs du Japon

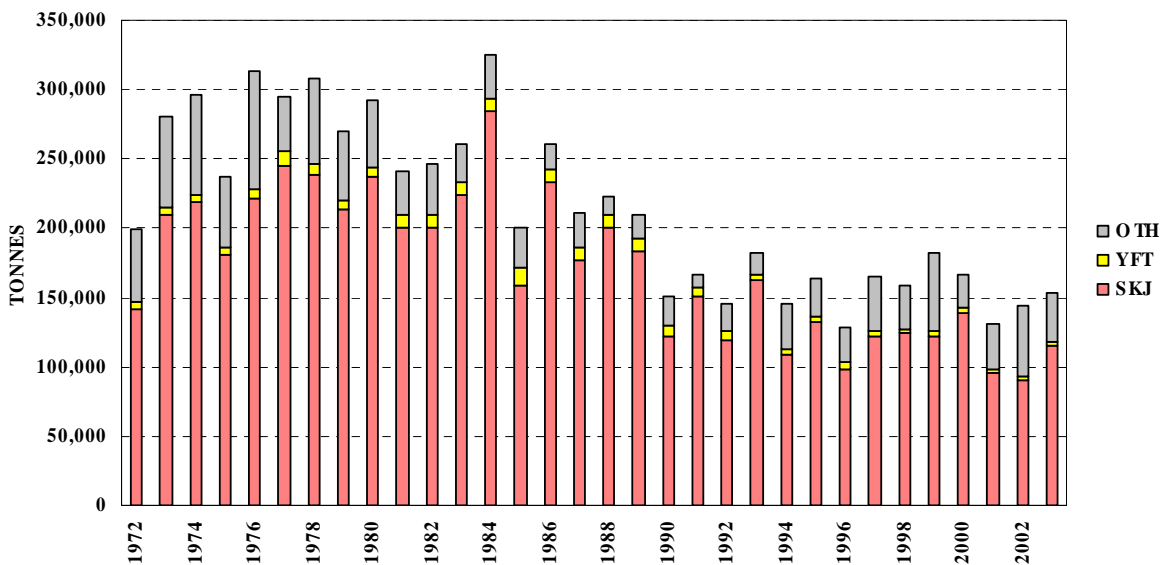


Figure 33. Catches (tonnes) of skipjack (SKJ), yellowfin (YFT) and other species (OTH) by Japanese offshore and distant-water pole-and-line vessels

Figure 33. Prises (en tonnes) de bonite (SKJ), de thon jaune (YFT) et d'autres espèces (OTH) des canneurs du Japon

Table 13. Catch statistics for Japanese pole-and-line vessels in the Western and Central Pacific Ocean. Units: Days = days fished or searched; Catch = tonnes; CPUE = tonnes per day fished or searched.

Tableau 13. Statistiques de prise des canneurs du Japon dans le Pacifique occidental et central. Unités : Nbr de Jours = nombre de jours de pêche ou de recherche du poisson; Prises = tonnes; PUE = nombre de tonnes par jour de pêche ou de recherche du poisson.

MONTH	VESSELS	DAYS	SKIPJACK			YELLOWFIN			OTHERS	TOTAL	
			CATCH	CPUE	%	CATCH	CPUE	%	CATCH	CATCH	CPUE
MOIS	NBR. DE NAVIRES	NBR. DE JOURS	BONITE			THON JAUNE			AUTRES	TOTAL	
			PRISES	PUE	%	PRISES	PUE	%	PRISES	PRISES	PUE
JAN/00	...	460	2,840	6.17	94	149	0.32	5	27	3,016	6.56
FEB	...	1,294	4,719	3.65	90	457	0.35	9	45	5,221	4.03
MAR	...	2,404	9,757	4.06	95	473	0.20	5	51	10,280	4.28
APR	...	2,417	11,179	4.63	94	617	0.26	5	76	11,872	4.91
MAY	...	2,668	20,852	7.82	94	533	0.20	2	848	22,234	8.33
JUN	...	2,497	13,141	5.26	70	320	0.13	2	5,273	18,734	7.50
JUL	...	2,465	17,933	7.27	75	218	0.09	1	5,674	23,824	9.66
AUG	...	2,030	10,479	5.16	75	121	0.06	1	3,428	14,027	6.91
SEP	...	2,176	16,796	7.72	76	132	0.06	1	5,232	22,160	10.18
OCT	...	2,421	19,402	8.01	98	158	0.07	1	258	19,818	8.19
NOV	...	1,781	7,626	4.28	95	183	0.10	2	195	8,004	4.49
DEC	...	980	4,138	4.22	82	114	0.12	2	779	5,031	5.13
TOT	...	23,593	138,860	5.89	85	3,475	0.15	2	21,885	164,219	6.96
AVG	...	1,966	11,572	5.69	87	290	0.16	3	1,824	13,685	6.68
JAN/01	...	367	1,278	3.48	85	224	0.61	15	3	1,505	4.10
FEB	...	1,271	5,644	4.44	92	454	0.36	7	31	6,129	4.82
MAR	...	1,893	8,278	4.37	94	493	0.26	6	53	8,824	4.66
APR	...	2,267	10,905	4.81	97	331	0.15	3	41	11,276	4.97
MAY	...	2,513	11,690	4.65	85	284	0.11	2	1,758	13,733	5.46
JUN	...	2,652	11,386	4.29	59	157	0.06	1	7,756	19,299	7.28
JUL	...	2,405	7,282	3.03	43	208	0.09	1	9,380	16,870	7.01
AUG	...	1,828	9,403	5.14	56	110	0.06	1	7,385	16,897	9.24
SEP	...	2,188	8,803	4.02	73	70	0.03	1	3,258	12,130	5.54
OCT	...	2,057	7,921	3.85	91	108	0.05	1	711	8,739	4.25
NOV	...	1,686	7,474	4.43	99	97	0.06	1	10	7,581	4.50
DEC	...	916	6,076	6.63	98	78	0.08	1	31	6,185	6.75
TOT	...	22,043	96,139	4.36	74	2,612	0.12	2	30,416	129,167	5.86
AVG	...	1,837	8,012	4.43	81	218	0.16	3	2,535	10,764	5.72
JAN/02	...	474	2,973	6.27	96	104	0.22	3	12	3,089	6.52
FEB	...	1,332	7,194	5.40	96	316	0.24	4	22	7,533	5.66
MAR	...	1,971	8,851	4.49	96	283	0.14	3	89	9,223	4.68
APR	...	2,284	12,632	5.53	92	377	0.17	3	701	13,711	6.00
MAY	...	2,390	8,392	3.51	69	410	0.17	3	3,279	12,081	5.05
JUN	...	2,291	5,277	2.30	29	283	0.12	2	12,679	18,238	7.96
JUL	...	2,227	8,325	3.74	39	208	0.09	1	12,624	21,157	9.50
AUG	...	1,978	4,860	2.46	29	103	0.05	1	11,775	16,737	8.46
SEP	...	2,001	10,874	5.43	59	75	0.04	0	7,636	18,585	9.29
OCT	...	2,073	7,530	3.63	94	155	0.07	2	350	8,035	3.88
NOV	...	1,399	8,221	5.88	90	135	0.10	1	792	9,148	6.54
DEC	...	535	5,489	10.26	99	52	0.10	1	10	5,552	10.38
TOT	...	20,955	90,618	4.32	63	2,500	0.12	2	49,971	143,089	6.83
AVG	...	1,746	7,551	4.91	74	208	0.13	2	4,164	11,924	6.99

POLE AND LINE: SOLOMON ISLANDS

The statistics in Table 14, which cover the Solomon Islands pole-and-line fleet, including chartered Okinawan vessels, were determined from logsheet data held at SPC on 30 June 2005. Coverage rates are 92 per cent for 2003 and 14 per cent for 2004; the statistics in Table 14 have not been raised to represent complete coverage. Figure 34 presents catch rates for skipjack and yellowfin; the estimates of catch rates for 1971–1995 were provided by the Solomon Islands Fisheries Division, while those for 1996–2003 were determined from logsheet data held at SPC. Figure 35 presents estimates of annual catches.

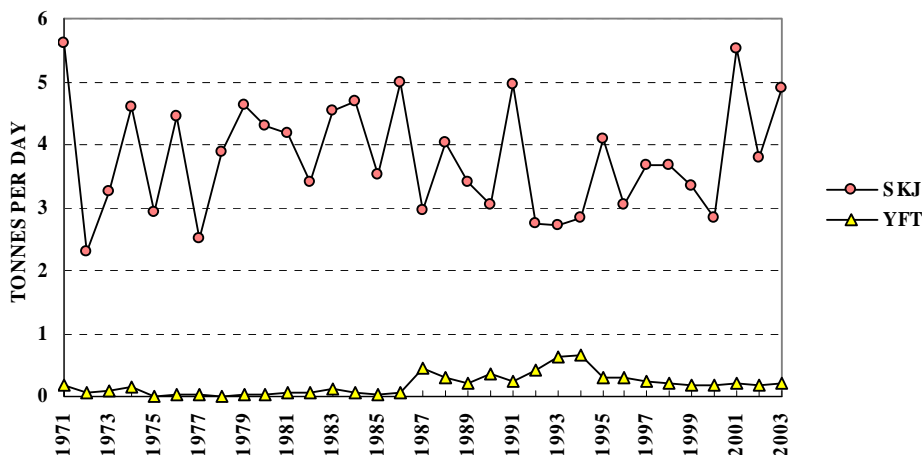


Figure 34. Solomon Islands pole-and-line catch rates (tonnes per day fished or searched) for skipjack (SKJ) and yellowfin (YFT)

Figure 34. Taux de prise (nombre de tonnes par jour de pêche ou de recherche du poisson) de bonite (SKJ) et de thon jaune (YFT) des canneurs des Îles Salomon

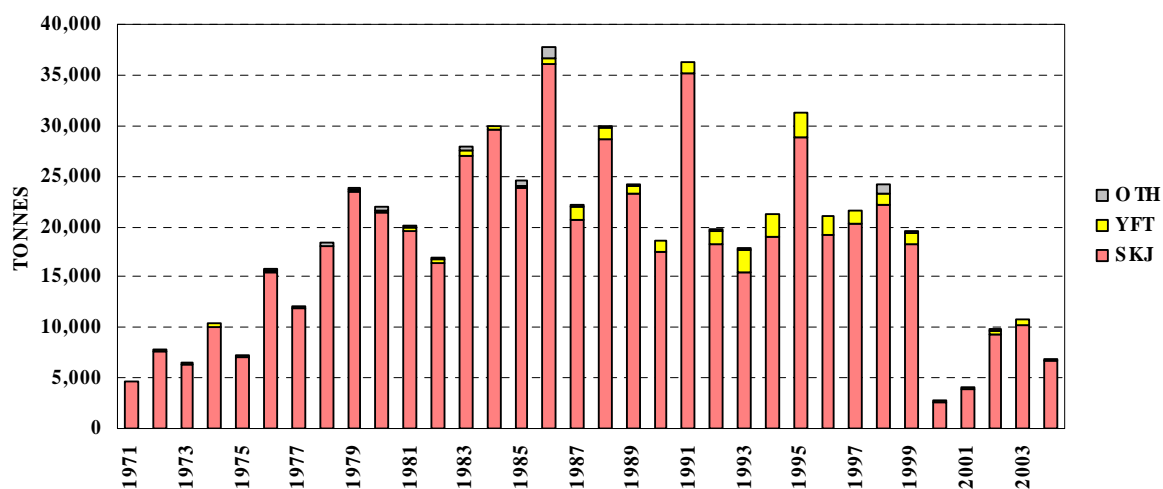


Figure 35. Catches (tonnes) of skipjack (SKJ), yellowfin (YFT) and other species (OTH) by Solomon Islands pole-and-line vessels

Figure 35. Prises (en tonnes) de bonite (SKJ), de thon jaune (YFT) et d'autres espèces (OTH) des canneurs des Îles Salomon

Table 14. Catch statistics for Solomon Islands pole-and-line vessels. Units: Days Covered = days fished or searched; Catch = tonnes; CPUE = tonnes per day fished or searched.

Tableau 14. Statistiques de prise des canneurs des Îles Salomon. Unités : Nbr. de Jours = nombre de jours de pêche ou de recherche du poisson; Prises = tonnes; PUE = nombre de tonnes par jour de pêche ou de recherche du poisson.

MONTH	VESSELS COVERED	DAYS COVERED	SKIPJACK			YELLOWFIN			OTHERS	TOTAL	
			CATCH	CPUE	%	CATCH	CPUE	%		CATCH	CPUE
MOIS	NBR. DE NAVIRES	NBR. DE JOURS	BONITE			THON JAUNE			AUTRES	TOTAL	
			PRISES	PUE	%	PRISES	PUE	%		PRISES	PUE
JAN/02	8	149	266	1.78	86	33	0.22	11	11	310	2.08
FEB	10	186	332	1.78	81	56	0.30	14	23	412	2.21
MAR	10	193	1,285	6.66	95	42	0.22	3	27	1,355	7.02
APR	11	217	653	3.01	89	46	0.21	6	31	731	3.37
MAY	11	240	1,036	4.32	96	32	0.13	3	12	1,080	4.50
JUN	11	220	748	3.40	96	19	0.09	2	11	778	3.53
JUL	11	209	573	2.74	97	10	0.05	2	5	589	2.82
AUG	11	230	985	4.28	99	8	0.04	1	3	996	4.33
SEP	11	237	1,003	4.23	97	23	0.10	2	7	1,032	4.36
OCT	11	214	823	3.85	95	37	0.17	4	4	864	4.04
NOV	9	178	789	4.44	94	40	0.23	5	13	842	4.73
DEC	9	134	639	4.77	92	57	0.42	8	2	697	5.21
TOT	12	2,407	9,132	3.79	94	405	0.17	4	148	9,685	4.02
AVG	10	201	761	3.77	94	34	0.18	4	12	807	4.02
JAN/03	9	174	1,394	8.01	95	71	0.41	5	0	1,465	8.42
FEB	9	169	1,274	7.54	96	56	0.33	4	0	1,330	7.87
MAR	7	152	850	5.59	94	53	0.35	6	0	903	5.94
APR	9	163	815	5.00	97	22	0.13	3	2	839	5.15
MAY	9	191	1,117	5.85	97	27	0.14	2	5	1,149	6.02
JUN	8	151	994	6.59	97	28	0.18	3	2	1,024	6.78
JUL	9	155	737	4.75	96	30	0.20	4	2	769	4.96
AUG	9	167	571	3.42	95	28	0.17	5	1	601	3.60
SEP	8	176	619	3.52	94	42	0.24	6	0	661	3.76
OCT	10	173	415	2.40	94	26	0.15	6	0	441	2.55
NOV	9	173	590	3.41	98	12	0.07	2	0	602	3.48
DEC	6	89	112	1.26	91	11	0.13	9	0	123	1.39
TOT	12	1,933	9,489	4.91	96	407	0.21	4	13	9,909	5.13
AVG	9	161	791	4.78	96	34	0.21	4	1	826	4.99
JAN/04	5	59	295	4.99	88	12	0.21	4	27	334	5.66
FEB	4	60	103	1.72	67	10	0.17	6	41	154	2.57
MAR	3	52	145	2.79	78	5	0.10	3	37	187	3.60
APR	6	110	156	1.42	61	34	0.31	13	67	256	2.33
MAY	0	—	—	—	—	—	—	—	—	—	—
JUN	0	—	—	—	—	—	—	—	—	—	—
JUL	0	—	—	—	—	—	—	—	—	—	—
AUG	0	—	—	—	—	—	—	—	—	—	—
SEP	0	—	—	—	—	—	—	—	—	—	—
OCT	0	—	—	—	—	—	—	—	—	—	—
NOV	0	—	—	—	—	—	—	—	—	—	—
DEC	0	—	—	—	—	—	—	—	—	—	—
TOT	7	281	698	2.49	75	61	0.22	7	172	932	3.32
AVG	5	70	175	2.73	75	15	0.20	7	43	233	3.54

PURSE SEINE: FEDERATED STATES OF MICRONESIA

The statistics in Table 15 were determined from logsheet data held at SPC on 30 June 2005. Coverage is unknown. Figure 36 presents catch rates for skipjack, yellowfin and all species combined. Figure 37 presents estimates of annual catches based on the available logsheet and unloadings data.

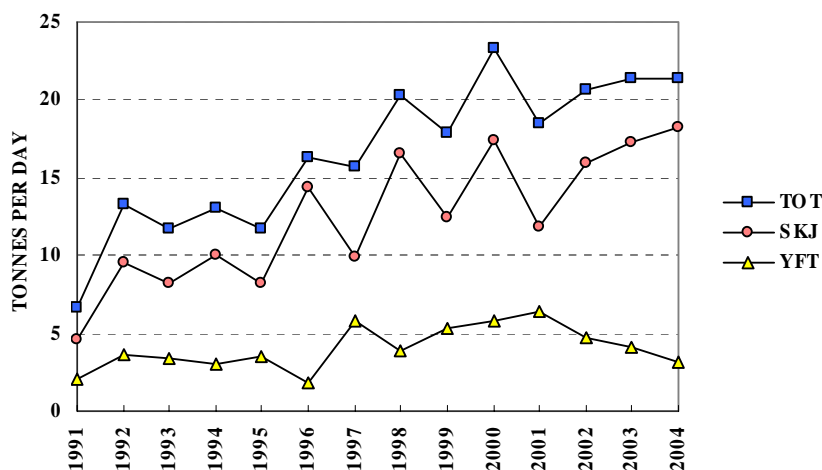


Figure 36. Federated States of Micronesia purse seiner catch rates (tonnes per day fished or searched) for skipjack (SKJ), yellowfin (YFT) and total catch (TOT)

Figure 36. Taux de prise (nombre de tonnes par jour de pêche ou de recherche du poisson) de bonite (SKJ), de thon jaune (YFT) et prises totales (TOT) des senneurs des États fédérés de Micronésie

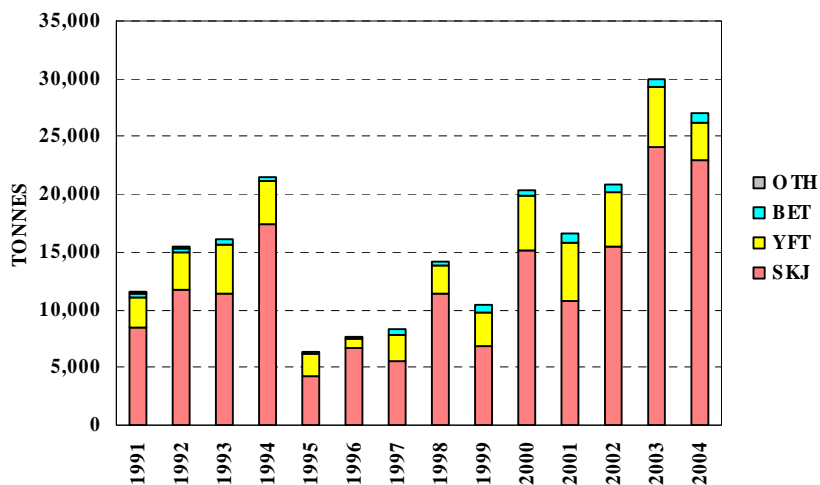


Figure 37. Catches (tonnes) of skipjack (SKJ), yellowfin (YFT), bigeye (BET) and other species (OTH) by Federated States of Micronesia purse seiners

Figure 37. Prises (en tonnes) de bonite (SKJ), de thon jaune (YFT), de thon obèse (BET) et d'autres espèces (OTH) des senneurs des États fédérés de Micronésie

Table 15. Catch statistics for Federated States of Micronesia purse seiners. Units: Days Covered = days fished or searched; Catch = tonnes; CPUE = tonnes per day fished or searched.

Tableau 15. Statistiques de prise des senneurs des États Fédérés de Micronésie. Unités : Nbr de Jours = nombre de jours de pêche ou de recherche du poisson; Prises = tonnes; PUE = nombre de tonnes par jour de pêche ou de recherche du poisson.

MONTH	VESSELS COVERED	DAYS COVERED	SKIPJACK			YELLOWFIN			OTHERS	TOTAL	
			CATCH	CPUE	%	CATCH	CPUE	%		CATCH	CPUE
MOIS	NBR. DE NAVIRES	NBR. DE JOURS	BONITE			THON JAUNE			AUTRES	TOTAL	
			PRISES	PUE	%	PRISES	PUE	%		PRISES	PUE
JAN/03	7	143	2,756	19.27	91	257	1.80	9	0	3,013	21.07
FEB	7	154	2,551	16.57	78	720	4.67	22	0	3,271	21.24
MAR	5	81	2,068	25.53	95	117	1.44	5	0	2,185	26.98
APR	6	100	2,433	24.33	82	518	5.18	18	0	2,951	29.51
MAY	5	105	2,060	19.62	82	439	4.18	18	0	2,499	23.80
JUN	5	114	1,957	17.16	81	447	3.92	19	0	2,404	21.09
JUL	5	77	1,510	19.61	85	277	3.60	16	0	1,787	23.21
AUG	7	115	1,231	10.71	71	501	4.36	29	0	1,732	15.06
SEP	7	154	2,683	17.42	77	754	4.90	22	40	3,477	22.58
OCT	6	116	1,962	16.91	81	475	4.09	19	0	2,437	21.01
NOV	6	111	1,387	12.49	67	692	6.24	33	0	2,079	18.73
DEC	6	125	1,456	11.65	71	564	4.51	27	41	2,061	16.48
TOT	8	1,395	24,054	17.24	80	5,761	4.13	19	81	29,895	21.43
AVG	6	116	2,005	17.61	80	480	4.07	19	7	2,491	21.73
JAN/04	6	102	1,234	12.09	83	203	1.99	14	45	1,482	14.52
FEB	5	113	1,936	17.13	76	596	5.27	24	0	2,532	22.41
MAR	6	96	2,103	21.90	84	401	4.18	16	0	2,504	26.08
APR	6	118	1,697	14.38	86	284	2.41	14	0	1,981	16.79
MAY	6	145	2,916	20.11	93	208	1.44	7	0	3,124	21.55
JUN	6	85	625	7.35	84	123	1.45	16	0	748	8.80
JUL	4	98	1,272	12.98	68	589	6.01	32	0	1,860	18.98
AUG	5	97	1,871	19.28	88	245	2.52	12	0	2,116	21.81
SEP	5	125	3,452	27.61	89	425	3.40	11	0	3,876	31.01
OCT	5	84	2,622	31.22	93	198	2.36	7	0	2,821	33.58
NOV	5	87	1,685	19.36	89	206	2.37	11	0	1,891	21.73
DEC	5	109	1,515	13.90	79	411	3.77	21	0	1,926	17.67
TOT	6	1,259	22,925	18.21	85	3,889	3.09	14	46	26,860	21.33
AVG	5	105	1,910	18.11	85	324	3.10	14	4	2,238	21.24
JAN/05	5	118	2,280	19.32	88	308	2.61	12	0	2,587	21.93
FEB	5	64	1,628	25.44	94	99	1.55	6	0	1,728	27.00
MAR	1	5	330	66.00	97	10	2.00	3	0	340	68.00
APR	0	—	—	—	—	—	—	—	—	—	—
MAY	0	—	—	—	—	—	—	—	—	—	—
JUN	0	—	—	—	—	—	—	—	—	—	—
JUL	0	—	—	—	—	—	—	—	—	—	—
AUG	0	—	—	—	—	—	—	—	—	—	—
SEP	0	—	—	—	—	—	—	—	—	—	—
OCT	0	—	—	—	—	—	—	—	—	—	—
NOV	0	—	—	—	—	—	—	—	—	—	—
DEC	0	—	—	—	—	—	—	—	—	—	—
TOT	5	187	4,238	22.66	91	417	2.23	9	0	4,655	24.89
AVG	4	62	1,413	36.92	91	139	2.05	9	0	1,552	38.98

PURSE SEINE: JAPAN

The statistics in Table 16 and Figure 38 cover Japanese distant-water purse seiners. All statistics were determined from data provided by the Fisheries Agency of Japan, grouped by 1° longitude, 1° latitude and month. Figure 39 presents estimates of annual catches.

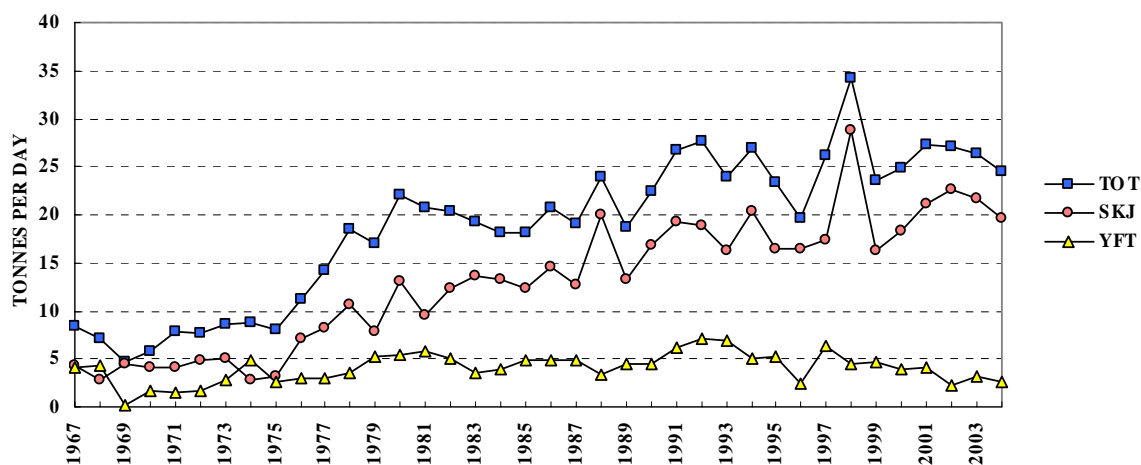


Figure 38. Japanese purse seiner catch rates (tonnes per day fished) for skipjack (SKJ), yellowfin (YFT) and total catch (TOT)

Figure 38. Taux de prise (nombre de tonnes par jour de pêche ou de recherche du poisson) de bonite (SKJ), de thon jaune (YFT) et prises totales (TOT) des senneurs du Japon

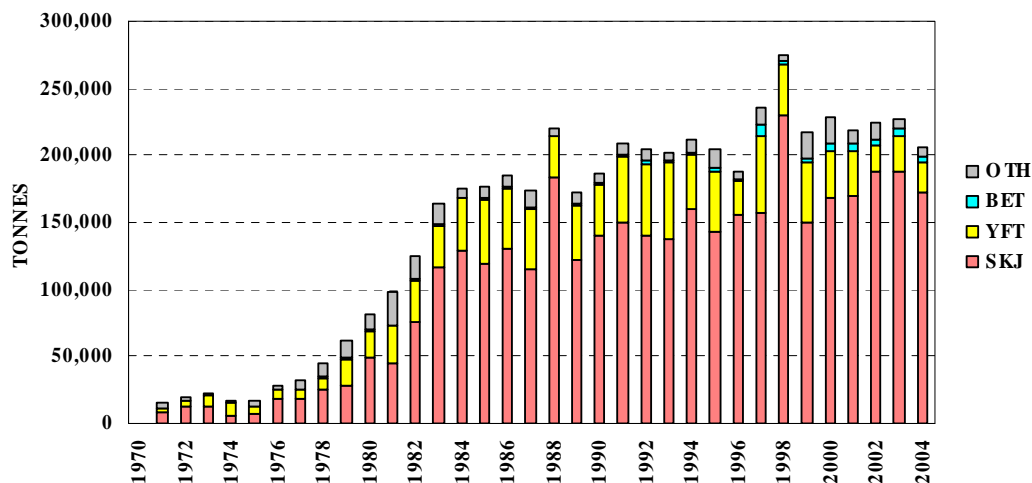


Figure 39. Catches (tonnes) of skipjack (SKJ), yellowfin (YFT), bigeye (BET) and other species (OTH) by Japanese purse seiners

Figure 39. Prises (en tonnes) de bonite (SKJ), de thon jaune (YFT), de thon obèse (BET) et d'autres espèces (OTH) des senneurs du Japon

Table 16. Catch statistics for Japanese purse seiners. Units: Days = days fished or searched; Catch = tonnes; CPUE = tonnes per day fished or searched.

Tableau 16. Statistiques de prise des senneurs du Japon. Unités : Nbr de Jours = nombre de jours de pêche ou de recherche du poisson; Prises = tonnes; PUE = nombre de tonnes par jour de pêche ou de recherche du poisson.

MONTH	VESSELS COVERED	DAYS	SKIPJACK			YELLOWFIN			OTHERS	TOTAL	
			CATCH	CPUE	%	CATCH	CPUE	%	CATCH	CATCH	CPUE
MOIS	NBR. DE NAVIRES	NBR. DE JOURS	BONITE			THON JAUNE			AUTRES	TOTAL	
			PRISES	PUE	%	PRISES	PUE	%	PRISES	PRISES	PUE
JAN/02	...	410	15,776	38.48	89	1,477	3.60	8	486	17,738	43.26
FEB	...	525	15,434	29.40	82	2,347	4.47	12	1,084	18,865	35.93
MAR	...	549	11,975	21.81	80	2,050	3.73	14	861	14,886	27.11
APR	...	466	13,837	29.69	87	1,358	2.91	9	630	15,825	33.96
MAY	...	761	14,654	19.26	80	2,636	3.46	14	1,112	18,403	24.18
JUN	...	1,227	16,381	13.35	74	2,572	2.10	12	3,074	22,026	17.95
JUL	...	955	21,304	22.31	84	1,020	1.07	4	2,977	25,301	26.49
AUG	...	981	18,777	19.14	80	1,413	1.44	6	3,386	23,575	24.03
SEP	...	850	17,974	21.15	87	1,505	1.77	7	1,290	20,769	24.43
OCT	...	643	13,240	20.59	92	502	0.78	4	600	14,342	22.31
NOV	...	452	11,539	25.53	84	672	1.49	5	1,458	13,669	30.24
DEC	...	489	17,161	35.09	88	1,587	3.25	8	797	19,546	39.97
TOT	...	8,308	188,052	22.64	84	19,138	2.30	9	17,755	224,945	27.08
AVG	...	692	15,671	24.65	84	1,595	2.51	9	1,480	18,745	29.16
JAN/03	...	474	13,172	27.79	77	3,647	7.69	21	363	17,182	36.25
FEB	...	553	20,552	37.16	92	1,139	2.06	5	712	22,403	40.51
MAR	...	481	19,511	40.57	96	396	0.82	2	381	20,288	42.18
APR	...	524	11,487	21.92	88	1,380	2.63	11	143	13,010	24.83
MAY	...	707	13,202	18.67	88	1,299	1.84	9	528	15,028	21.26
JUN	...	1,033	17,174	16.63	76	3,012	2.92	13	2,554	22,741	22.01
JUL	...	1,218	35,209	28.91	91	2,021	1.66	5	1,515	38,745	31.81
AUG	...	951	17,016	17.89	80	3,144	3.31	15	1,116	21,276	22.37
SEP	...	799	10,972	13.73	77	2,586	3.24	18	690	14,248	17.83
OCT	...	581	11,066	19.05	79	2,444	4.21	17	463	13,973	24.05
NOV	...	721	6,369	8.83	50	3,407	4.73	27	3,068	12,843	17.81
DEC	...	617	11,692	18.95	75	2,645	4.29	17	1,326	15,664	25.39
TOT	...	8,659	187,421	21.64	82	27,120	3.13	12	12,859	227,401	26.26
AVG	...	722	15,618	22.51	81	2,260	3.28	13	1,072	18,950	27.19
JAN/04	...	603	13,626	22.60	86	1,788	2.97	11	352	15,766	26.15
FEB	...	507	13,264	26.16	89	1,492	2.94	10	226	14,981	29.55
MAR	...	486	15,041	30.95	90	1,398	2.88	8	252	16,690	34.34
APR	...	800	17,962	22.45	78	4,277	5.35	18	912	23,150	28.94
MAY	...	942	16,996	18.04	72	1,840	1.95	8	4,716	23,552	25.00
JUN	...	1,018	12,907	12.68	65	1,472	1.45	7	5,614	19,994	19.64
JUL	...	1,021	19,640	19.24	81	1,412	1.38	6	3,073	24,125	23.63
AUG	...	913	15,404	16.87	81	1,993	2.18	10	1,707	19,104	20.92
SEP	...	651	10,283	15.80	78	2,237	3.44	17	591	13,111	20.14
OCT	...	666	15,234	22.87	86	1,929	2.90	11	542	17,705	26.59
NOV	...	600	11,270	18.78	81	1,446	2.41	10	1,182	13,898	23.16
DEC	...	589	10,936	18.57	78	1,342	2.28	10	1,714	13,993	23.76
TOT	...	8,796	172,563	19.62	80	22,627	2.57	10	20,881	216,070	24.57
AVG	...	733	14,380	20.42	80	1,886	2.68	11	1,740	18,006	25.15

PURSE SEINE: PAPUA NEW GUINEA

The statistics in Table 17 and Figure 40 were determined from logsheet data held at SPC on 30 June 2005. Coverage is 99 per cent for 2003 and 96 per cent for 2004; the statistics in Table 17 have not been raised to represent complete coverage. Figure 41 presents estimates of annual catches.

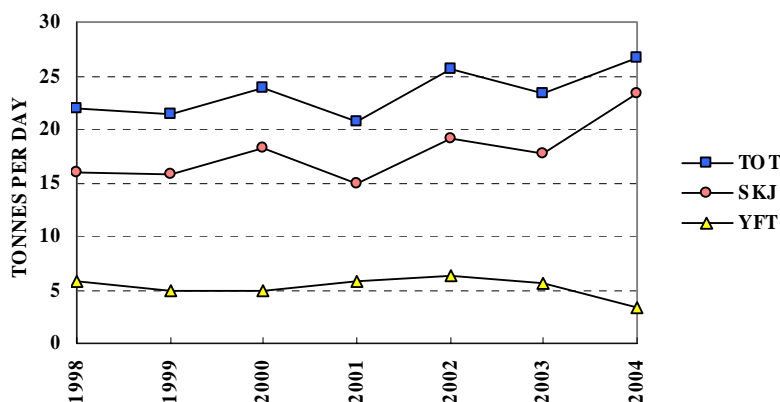


Figure 40. Papua New Guinea purse seiner catch rates (tonnes per day fished or searched) for skipjack (SKJ), yellowfin (YFT) and total catch (TOT)

Figure 40. Taux de prise (nombre de tonnes par jour de pêche ou de recherche du poisson) de bonite (SKJ), de thon jaune (YFT) et prises totales (TOT) des senneurs de Papouasie-Nouvelle-Guinée

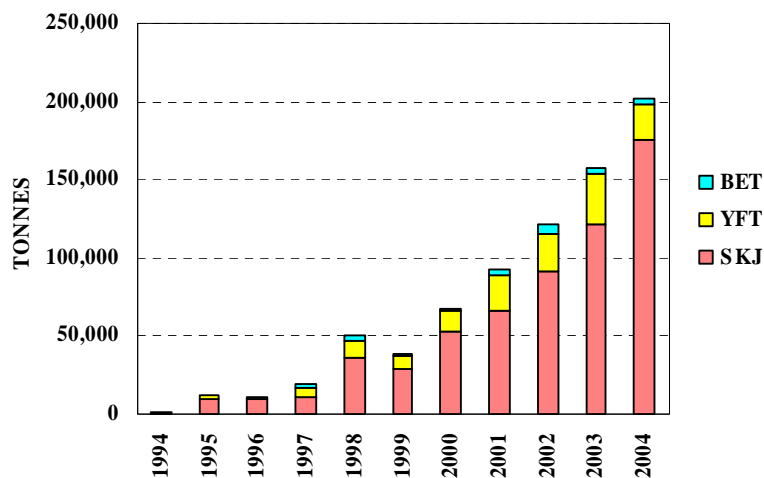


Figure 41. Catches (tonnes) of skipjack (SKJ), yellowfin (YFT), bigeye (BET) and other species (OTH) by Papua New Guinea purse seiners

Figure 41. Prises (en tonnes) de bonite (SKJ), de thon jaune (YFT), de thon obèse (BET) et d'autres espèces (OTH) des senneurs de Papouasie-Nouvelle-Guinée

Table 17. Catch statistics for Papua New Guinea purse seiners. Units: Days Covered = days fished or searched; Catch = tonnes; CPUE = tonnes per day fished or searched.

Tableau 17. Statistiques de prise des senneurs de Papouasie-Nouvelle-Guinée. Unités : Nbr de Jours = nombre de jours de pêche ou de recherche du poisson; Prises = tonnes; PUE = nombre de tonnes par jour de pêche ou de recherche du poisson.

MONTH	VESSELS COVERED	DAYS COVERED	SKIPJACK			YELLOWFIN			OTHERS	TOTAL	
			CATCH	CPUE	%	CATCH	CPUE	%		CATCH	CPUE
MOIS	NBR. DE NAVIRES	NBR. DE JOURS	BONITE			THON JAUNE			AUTRES	TOTAL	
			PRISES	PUE	%	PRISES	PUE	%		PRISES	PUE
JAN/03	22	429	12,067	28.13	85	2,177	5.07	15	20	14,264	33.25
FEB	23	431	9,995	23.19	71	3,984	9.24	28	60	14,040	32.57
MAR	23	494	17,258	34.94	81	3,994	8.08	19	21	21,273	43.06
APR	25	536	13,539	25.26	74	4,856	9.06	26	13	18,408	34.34
MAY	25	546	10,790	19.76	91	1,089	1.99	9	6	11,885	21.77
JUN	25	528	6,578	12.46	78	1,897	3.59	22	9	8,485	16.07
JUL	27	694	8,184	11.79	67	3,899	5.62	32	190	12,273	17.68
AUG	27	670	5,464	8.15	62	3,366	5.02	38	18	8,848	13.21
SEP	27	591	5,377	9.10	57	4,007	6.78	43	9	9,394	15.89
OCT	26	626	9,067	14.48	77	2,687	4.29	23	3	11,756	18.78
NOV	27	583	9,439	16.19	73	3,411	5.85	27	2	12,853	22.05
DEC	27	566	10,916	19.29	83	2,294	4.05	17	8	13,217	23.35
TOT	34	6,694	118,676	17.73	76	37,661	5.63	24	359	156,696	23.41
AVG	25	558	9,890	18.56	76	3,138	5.72	24	30	13,058	24.34
JAN/04	28	583	15,431	26.47	88	2,153	3.69	12	10	17,594	30.18
FEB	28	568	14,677	25.84	88	2,060	3.63	12	2	16,739	29.47
MAR	20	419	11,823	28.22	95	677	1.61	5	5	12,504	29.84
APR	20	417	12,571	30.15	96	580	1.39	4	9	13,160	31.56
MAY	28	631	15,577	24.69	89	1,979	3.14	11	8	17,563	27.83
JUN	30	646	8,651	13.39	85	1,531	2.37	15	13	10,194	15.78
JUL	30	709	10,937	15.43	67	5,332	7.52	33	13	16,282	22.96
AUG	31	715	15,714	21.98	84	2,911	4.07	16	27	18,651	26.08
SEP	30	608	14,524	23.89	86	2,374	3.90	14	49	16,948	27.87
OCT	29	690	18,093	26.22	89	2,153	3.12	11	28	20,275	29.38
NOV	29	623	15,093	24.23	92	1,276	2.05	8	17	16,386	26.30
DEC	26	626	15,465	24.70	91	1,580	2.52	9	3	17,049	27.23
TOT	34	7,235	168,556	23.30	87	24,604	3.40	13	185	193,345	26.72
AVG	27	603	14,046	23.77	87	2,050	3.25	13	15	16,112	27.04
JAN/05	27	407	7,144	17.55	85	1,235	3.03	15	8	8,387	20.61
FEB	19	307	5,237	17.06	79	1,372	4.47	21	57	6,666	21.71
MAR	8	112	4,001	35.73	91	386	3.45	9	9	4,397	39.26
APR	2	36	635	17.63	52	591	16.40	48	0	1,225	34.03
MAY	0	—	—	—	—	—	—	—	—	—	—
JUN	0	—	—	—	—	—	—	—	—	—	—
JUL	0	—	—	—	—	—	—	—	—	—	—
AUG	0	—	—	—	—	—	—	—	—	—	—
SEP	0	—	—	—	—	—	—	—	—	—	—
OCT	0	—	—	—	—	—	—	—	—	—	—
NOV	0	—	—	—	—	—	—	—	—	—	—
DEC	0	—	—	—	—	—	—	—	—	—	—
TOT	28	862	17,016	19.74	82	3,584	4.16	17	75	20,675	23.98
AVG	14	216	4,254	21.99	82	896	6.84	17	19	5,169	28.90

PURSE SEINE: REPUBLIC OF KOREA

The statistics in Table 18 and Figure 42 were determined from logsheet data held at SPC on 30 June 2005. Coverage is 82 per cent for 2003 and 88 per cent for 2004; the statistics in Table 18 have not been raised to represent complete coverage. Figure 43 presents estimates of annual catches.

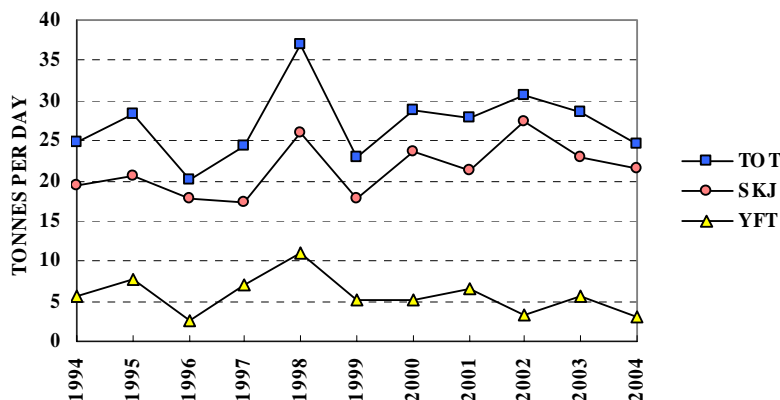


Figure 42. Korean purse seiner catch rates (tonnes per day fished or searched) for skipjack (SKJ), yellowfin (YFT) and total catch (TOT)

Figure 42. Taux de prise (nombre de tonnes par jour de pêche ou de recherche du poisson) de bonite (SKJ), de thon jaune (YFT) et prises totales (TOT) des senneurs de Corée

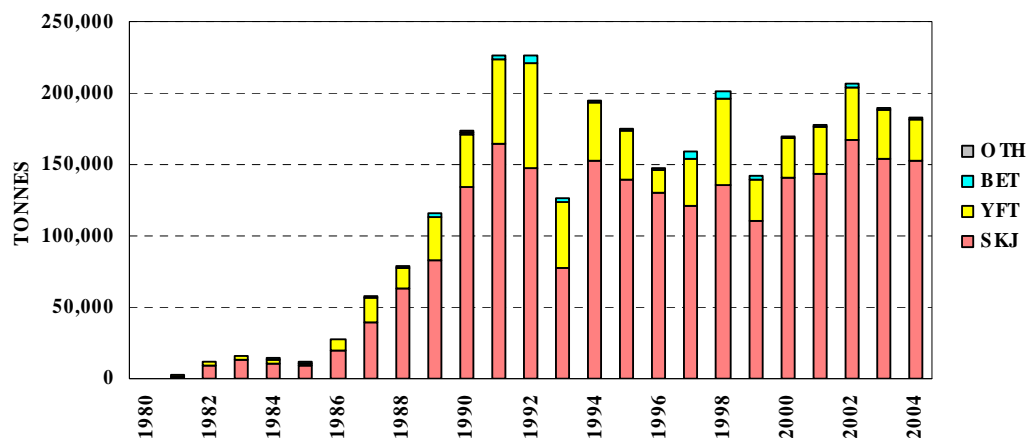


Figure 43. Catches (tonnes) of skipjack (SKJ), yellowfin (YFT), bigeye (BET) and other species (OTH) by Korean purse seiners

Figure 43. Prises (en tonnes) de bonite (SKJ), de thon jaune (YFT), de thon obèse (BET) et d'autres espèces (OTH) des senneurs de Corée

Table 18. Catch statistics for Korean purse seiners. Units: Days Covered = days fished or searched; Catch = tonnes; CPUE = tonnes per day fished or searched.

Tableau 18. Statistiques de prise des senneurs de Corée. Unités : Nbr de Jours = nombre de jours de pêche ou de recherche du poisson; Prises = tonnes; PUE = nombre de tonnes par jour de pêche ou de recherche du poisson.

MONTH	VESSELS COVERED	DAYS COVERED	SKIPJACK			YELLOWFIN			OTHERS	TOTAL	
			CATCH	CPUE	%	CATCH	CPUE	%		CATCH	CPUE
MOIS	NBR. DE NAVIRES	NBR. DE JOURS	BONITE			THON JAUNE			AUTRES	TOTAL	
			PRISES	PUE	%	PRISES	PUE	%		PRISES	PUE
JAN/03	26	533	19,370	36.34	86	3,105	5.83	14	5	22,480	42.18
FEB	23	418	11,930	28.54	57	8,963	21.44	43	7	20,900	50.00
MAR	23	450	15,725	34.94	92	1,295	2.88	8	30	17,050	37.89
APR	20	428	16,005	37.39	92	1,400	3.27	8	0	17,405	40.67
MAY	18	325	9,770	30.06	99	115	0.35	1	0	9,885	30.42
JUN	19	441	7,390	16.76	87	1,100	2.49	13	20	8,510	19.30
JUL	19	481	7,285	15.15	88	970	2.02	12	5	8,260	17.17
AUG	20	461	4,940	10.72	76	1,519	3.29	23	71	6,530	14.16
SEP	22	474	8,826	18.62	67	4,411	9.31	33	15	13,252	27.96
OCT	20	489	6,555	13.40	74	2,360	4.83	26	2	8,917	18.23
NOV	19	407	10,580	26.00	76	3,316	8.15	24	45	13,941	34.25
DEC	23	508	5,899	11.61	76	1,856	3.65	24	0	7,755	15.27
TOT	26	5,415	124,275	22.95	80	30,410	5.62	20	200	154,885	28.60
AVG	21	451	10,356	23.29	80	2,534	5.63	20	17	12,907	28.96
JAN/04	24	558	11,465	20.55	78	3,155	5.65	22	1	14,621	26.20
FEB	22	475	13,215	27.82	92	1,215	2.56	8	0	14,430	30.38
MAR	23	506	12,230	24.17	94	785	1.55	6	0	13,015	25.72
APR	24	554	11,500	20.76	94	670	1.21	6	0	12,170	21.97
MAY	24	553	11,440	20.69	96	525	0.95	4	5	11,970	21.65
JUN	23	478	5,465	11.43	98	110	0.23	2	5	5,580	11.67
JUL	24	617	10,330	16.74	74	3,620	5.87	26	0	13,950	22.61
AUG	26	655	10,395	15.87	79	2,814	4.30	21	13	13,222	20.19
SEP	25	575	13,558	23.58	86	2,277	3.96	14	18	15,852	27.57
OCT	25	607	17,416	28.69	91	1,774	2.92	9	10	19,200	31.63
NOV	23	487	11,362	23.33	91	1,137	2.33	9	1	12,500	25.67
DEC	24	545	13,395	24.58	86	2,145	3.94	14	0	15,540	28.51
TOT	26	6,610	141,771	21.45	87	20,227	3.06	12	53	162,051	24.52
AVG	24	551	11,814	21.52	87	1,686	2.96	12	4	13,504	24.48
JAN/05	23	534	11,015	20.63	73	4,008	7.51	27	3	15,026	28.14
FEB	23	426	8,730	20.49	81	2,035	4.78	19	1	10,766	25.27
MAR	11	234	5,365	22.93	88	735	3.14	12	0	6,100	26.07
APR	20	438	8,350	19.06	80	2,040	4.66	20	1	10,391	23.72
MAY	18	342	12,675	37.06	97	340	0.99	3	0	13,015	38.06
JUN	11	102	5,075	49.75	100	20	0.20	0	0	5,095	49.95
JUL	0	—	—	—	—	—	—	—	—	—	—
AUG	0	—	—	—	—	—	—	—	—	—	—
SEP	0	—	—	—	—	—	—	—	—	—	—
OCT	0	—	—	—	—	—	—	—	—	—	—
NOV	0	—	—	—	—	—	—	—	—	—	—
DEC	0	—	—	—	—	—	—	—	—	—	—
TOT	25	2,076	51,210	24.67	85	9,178	4.42	15	5	60,393	29.09
AVG	18	346	8,535	28.32	85	1,530	3.55	15	1	10,066	31.87

PURSE SEINE: CHINESE TAIPEI

The statistics in Table 19 and Figure 44 were determined from logsheet data held at SPC on 30 June 2005. Coverage is complete for 2003 and 2004; the statistics in Table 19 have not been raised to represent complete coverage. Figure 45 presents estimates of annual catches.

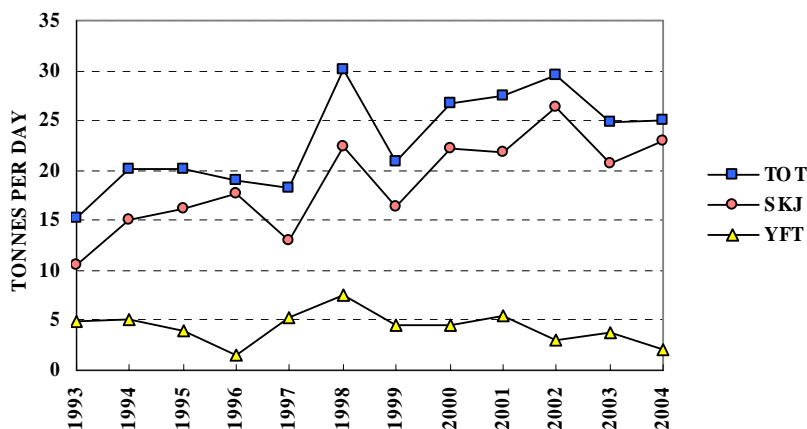


Figure 44. Chinese Taipei purse seiner catch rates (tonnes per day fished or searched) for skipjack (SKJ), yellowfin (YFT) and total catch (TOT)

Figure 44. Taux de prise (nombre de tonnes par jour de pêche ou de recherche du poisson) de bonite (SKJ), de thon jaune (YFT) et prises totales (TOT) des senneurs de Taïwan

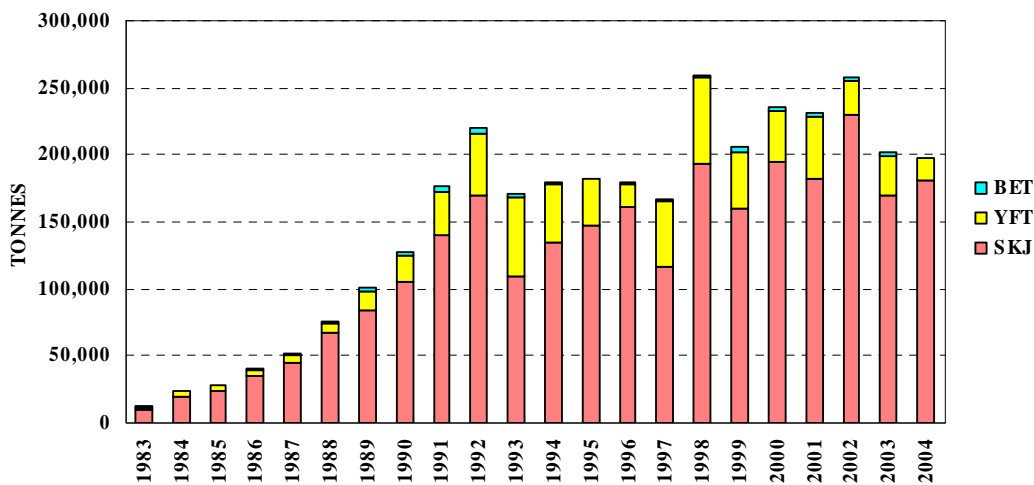


Figure 45. Catches (tonnes) of skipjack (SKJ), yellowfin (YFT) and bigeye (BET) by Chinese Taipei purse seiners

Figure 45. Prises (en tonnes) de bonite (SKJ), de thon jaune (YFT) et de thon obèse (BET) des senneurs de Taïwan

Table 19. Catch statistics for Chinese Taipei purse seiners. Units: Days Covered = days fished or searched; Catch = tonnes; CPUE = tonnes per day fished or searched.

Tableau 19. Statistiques de prise des senneurs de Taïwan. Unités : Nbr de Jours = nombre de jours de pêche ou de recherche du poisson; Prises = tonnes; PUE = nombre de tonnes par jour de pêche ou de recherche du poisson.

MONTH	VESSELS COVERED	DAYS COVERED	SKIPJACK			YELLOWFIN			OTHERS	TOTAL	
			CATCH	CPUE	%	CATCH	CPUE	%		CATCH	CPUE
MOIS	NBR. DE NAVIRES	NBR. DE JOURS	BONITE			THON JAUNE			AUTRES	TOTAL	
			PRISES	PUE	%	PRISES	PUE	%		PRISES	PRISES
JAN/03	36	775	20,201	26.07	87	2,761	3.56	12	207	23,169	29.90
FEB	36	656	21,561	32.87	89	2,249	3.43	9	467	24,277	37.01
MAR	34	626	22,780	36.39	89	2,412	3.85	9	298	25,490	40.72
APR	36	733	22,459	30.64	85	3,783	5.16	14	179	26,421	36.05
MAY	36	702	16,397	23.36	97	455	0.65	3	27	16,879	24.04
JUN	34	671	11,256	16.77	81	2,558	3.81	18	52	13,866	20.66
JUL	34	772	10,078	13.05	71	4,178	5.41	29	38	14,294	18.52
AUG	34	763	9,502	12.45	81	2,137	2.80	18	103	11,742	15.39
SEP	35	682	8,631	12.66	63	4,854	7.12	36	144	13,629	19.98
OCT	34	780	13,417	17.20	79	3,409	4.37	20	74	16,900	21.67
NOV	32	628	9,433	15.02	85	1,574	2.51	14	152	11,159	17.77
DEC	31	682	9,971	14.62	84	1,795	2.63	15	67	11,833	17.35
TOT	40	8,470	175,686	20.74	84	32,165	3.80	15	1,808	209,659	24.75
AVG	34	706	14,641	20.93	84	2,680	3.78	15	151	17,472	24.92
JAN/04	30	659	21,011	31.88	93	1,680	2.55	7	8	22,699	34.44
FEB	27	551	13,089	23.75	91	1,342	2.44	9	11	14,442	26.21
MAR	31	566	15,418	27.24	96	548	0.97	3	13	15,979	28.23
APR	32	655	17,463	26.66	96	778	1.19	4	21	18,262	27.88
MAY	34	699	16,312	23.34	94	1,088	1.56	6	14	17,414	24.91
JUN	31	667	8,539	12.80	93	560	0.84	6	51	9,150	13.72
JUL	31	738	12,022	16.29	76	3,784	5.13	24	12	15,818	21.43
AUG	30	702	12,302	17.52	87	1,767	2.52	13	68	14,137	20.14
SEP	28	650	13,009	20.01	83	2,673	4.11	17	59	15,741	24.22
OCT	33	747	17,881	23.94	95	949	1.27	5	67	18,897	25.30
NOV	33	699	18,408	26.33	97	574	0.82	3	13	18,995	27.18
DEC	32	697	18,774	26.94	96	791	1.13	4	18	19,583	28.10
TOT	35	8,030	184,228	22.94	92	16,535	2.06	8	354	201,116	25.05
AVG	31	669	15,352	23.06	92	1,378	2.04	8	29	16,760	25.15
JAN/05	30	717	11,309	15.77	91	1,133	1.58	9	24	12,466	17.39
FEB	29	619	10,341	16.71	88	1,358	2.19	12	48	11,747	18.98
MAR	30	626	14,931	23.85	87	2,235	3.57	13	66	17,232	27.53
APR	29	653	8,589	13.15	78	2,406	3.68	22	62	11,057	16.93
MAY	23	324	7,850	24.23	83	1,560	4.81	16	55	9,465	29.21
JUN	1	2	95	47.50	100	0	0.00	0	0	95	47.50
JUL	0	—	—	—	—	—	—	—	—	—	—
AUG	0	—	—	—	—	—	—	—	—	—	—
SEP	0	—	—	—	—	—	—	—	—	—	—
OCT	0	—	—	—	—	—	—	—	—	—	—
NOV	0	—	—	—	—	—	—	—	—	—	—
DEC	0	—	—	—	—	—	—	—	—	—	—
TOT	33	2,941	53,115	18.06	86	8,692	2.96	14	254	62,062	21.10
AVG	24	490	8,853	23.54	86	1,449	2.64	14	42	10,344	26.26

PURSE SEINE: UNITED STATES OF AMERICA

The statistics in Table 20, which cover the United States purse-seine fleet in the Western and Central Pacific Ocean (Figure 1), were determined from logsheet data held at SPC on 30 June 2005. Coverage is complete for 2003 and 2004. Figure 46 presents estimates of catch rates for skipjack, yellowfin and all species combined; the catch rates for 1981–2001 were provided by the National Marine Fisheries Service, while those for 2002–2004 were determined from logsheet data held at SPC and are thus preliminary. Figure 47 presents estimates of annual catches in the WCPO.

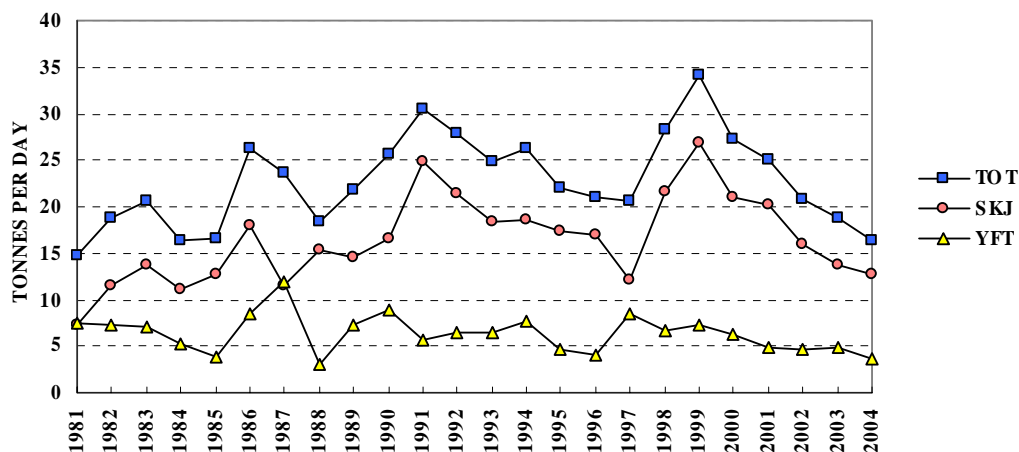


Figure 46. United States purse seiner catch rates (tonnes per day fished or searched) for skipjack (SKJ), yellowfin (YFT) and total catch (TOT)

Figure 46. Taux de prise (nombre de tonnes par jour de pêche ou de recherche du poisson) de bonite (SKJ), de thon jaune (YFT) et prises totales (TOT) des senneurs des États-Unis d'Amérique

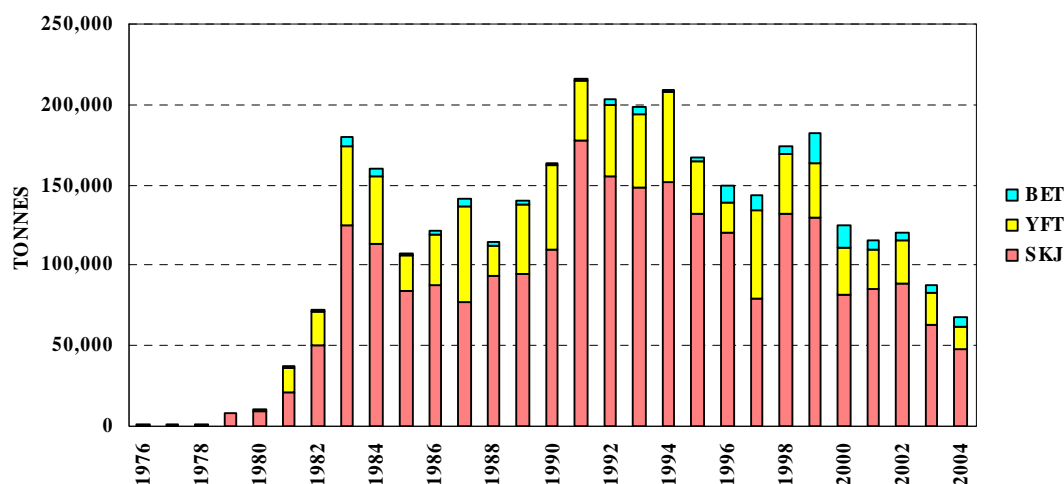


Figure 47. Catches (tonnes) of skipjack (SKJ), yellowfin (YFT) and bigeye (BET) by United States purse seiners

Figure 47. Prises (en tonnes) de bonite (SKJ), de thon jaune (YFT) et de thon obèse (BET) des senneurs des États-Unis d'Amérique

Table 20. Catch statistics for United States purse seiners. Units: Days Covered = days fished or searched; Catch = tonnes; CPUE = tonnes per day fished or searched.

Tableau 20. Statistiques de prise des senneurs des États-Unis. Unités : Nbr de Jours = nombre de jours de pêche ou de recherche du poisson; Prises = tonnes; PUE = nombre de tonnes par jour de pêche ou de recherche du poisson.

MONTH	VESSELS COVERED	DAYS COVERED	SKIPJACK			YELLOWFIN			OTHERS	TOTAL	
			CATCH	CPUE	%	CATCH	CPUE	%		CATCH	CPUE
MOIS	NBR. DE NAVIRES	NBR. DE JOURS	BONITE			THON JAUNE			AUTRES	TOTAL	
			PRISES	PUE	%	PRISES	PUE	%		PRISES	PRISES
JAN/03	17	342	6,523	19.07	83	1,209	3.54	15	104	7,837	22.91
FEB	21	345	4,926	14.28	57	3,755	10.88	43	37	8,718	25.27
MAR	23	430	5,848	13.60	64	3,221	7.49	35	97	9,166	21.32
APR	22	444	6,825	15.37	73	2,432	5.48	26	106	9,363	21.09
MAY	23	473	4,565	9.65	84	821	1.73	15	37	5,423	11.46
JUN	15	311	3,524	11.33	74	1,242	3.99	26	10	4,776	15.36
JUL	17	335	3,042	9.08	77	904	2.70	23	26	3,972	11.86
AUG	19	467	3,710	7.94	70	1,533	3.28	29	83	5,326	11.40
SEP	19	413	5,313	12.86	77	1,484	3.59	22	104	6,900	16.71
OCT	19	387	6,467	16.71	80	1,558	4.03	19	90	8,114	20.97
NOV	21	398	7,087	17.81	69	3,078	7.73	30	98	10,262	25.78
DEC	19	376	7,126	18.95	81	1,669	4.44	19	25	8,820	23.46
TOT	26	4,721	64,954	13.76	73	22,905	4.85	26	816	88,675	18.78
AVG	20	393	5,413	13.89	73	1,909	4.91	26	68	7,390	18.97
JAN/04	17	256	2,808	10.97	79	688	2.69	19	70	3,566	13.93
FEB	21	401	3,727	9.30	70	1,565	3.90	29	29	5,321	13.27
MAR	19	531	6,597	12.42	78	1,845	3.48	22	6	8,449	15.91
APR	17	386	4,604	11.93	68	2,203	5.71	32	0	6,807	17.63
MAY	17	291	3,529	12.13	69	1,551	5.33	31	5	5,084	17.47
JUN	16	335	3,768	11.25	73	1,386	4.14	27	11	5,165	15.42
JUL	17	453	3,372	7.44	67	1,593	3.52	31	103	5,069	11.19
AUG	17	381	5,737	15.06	81	1,319	3.46	19	49	7,105	18.65
SEP	14	276	4,417	16.00	84	790	2.86	15	38	5,245	19.00
OCT	14	337	5,914	17.55	87	857	2.54	13	38	6,809	20.20
NOV	15	241	4,377	18.16	84	779	3.23	15	36	5,193	21.55
DEC	9	225	3,218	14.30	86	529	2.35	14	1	3,747	16.65
TOT	23	4,113	52,068	12.66	77	15,104	3.67	22	387	67,559	16.43
AVG	16	343	4,339	13.04	77	1,259	3.60	22	32	5,630	16.74
JAN/05	7	178	2,151	12.09	79	552	3.10	20	14	2,717	15.26
FEB	4	63	548	8.70	90	60	0.95	10	0	608	9.65
MAR	2	17	143	8.42	88	20	1.16	12	0	163	9.59
APR	0	—	—	—	—	—	—	—	—	—	—
MAY	0	—	—	—	—	—	—	—	—	—	—
JUN	0	—	—	—	—	—	—	—	—	—	—
JUL	0	—	—	—	—	—	—	—	—	—	—
AUG	0	—	—	—	—	—	—	—	—	—	—
SEP	0	—	—	—	—	—	—	—	—	—	—
OCT	0	—	—	—	—	—	—	—	—	—	—
NOV	0	—	—	—	—	—	—	—	—	—	—
DEC	0	—	—	—	—	—	—	—	—	—	—
TOT	7	258	2,843	11.02	82	631	2.45	18	14	3,487	13.52
AVG	4	86	948	9.74	82	210	1.74	18	5	1,162	11.50