

Scaling up
community-based
fisheries management

Transposition à grande
échelle de la gestion
communautaire des pêches



Regional
Workshop
Tanoa Int. Nadi, Fiji
29 April-3 May 2024



Pacific
Community
Communauté
du Pacifique

Community-Based Fisheries Management Monitoring

Assessing the effectiveness of local management

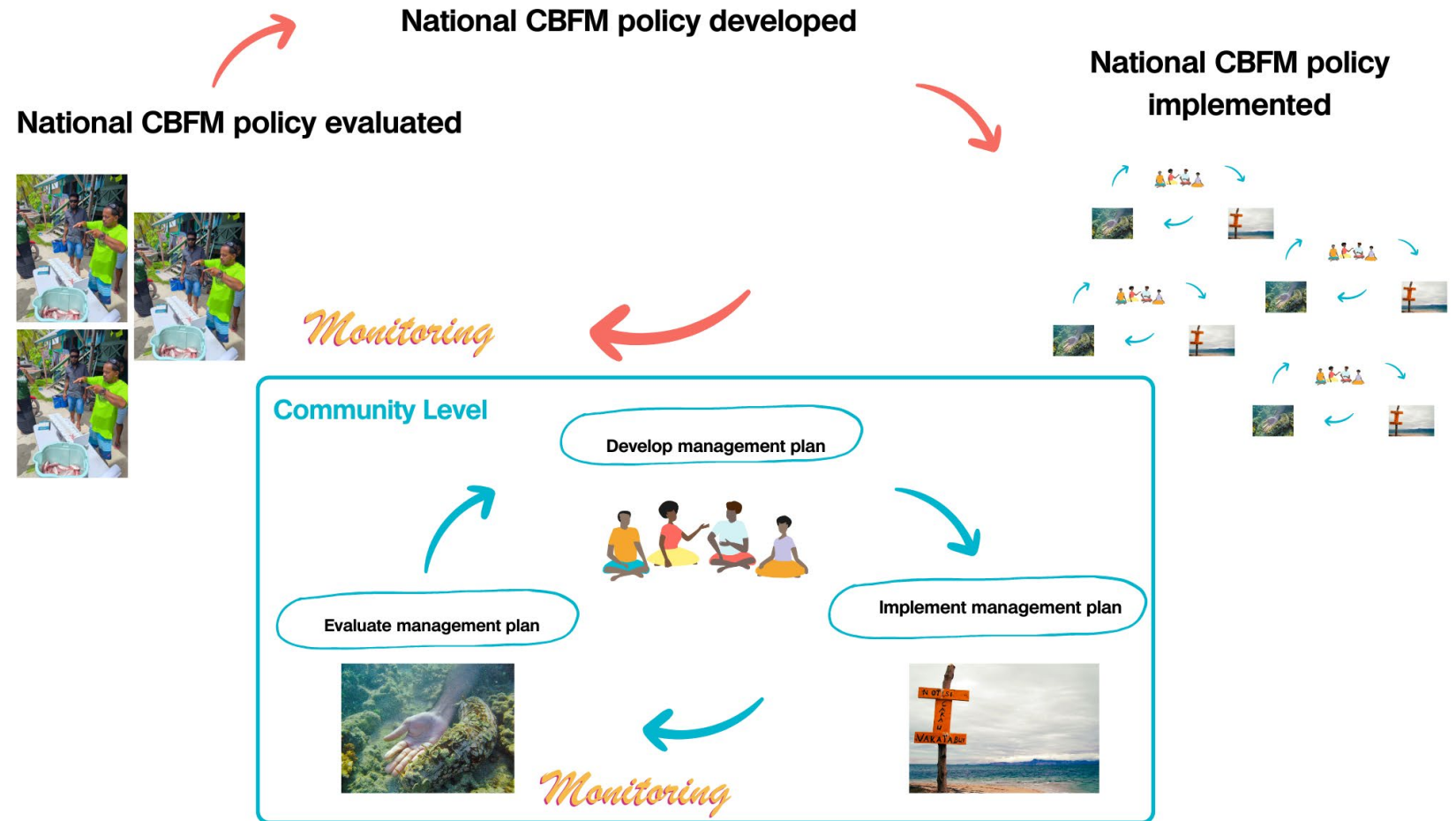
Caroline Vieux, SPC Consultant



Why monitoring is important?

Monitoring is a key step of the CBFM cycle

1. It allows communities to see if the management set up is meeting its objectives.
2. It allows government to do the same with their national CBFM program.
3. In both cases, results can be used to adapt and improve the effectiveness of management



2 levels of monitoring

	Community/site level	National level
Objective	Assess if local measures are working and adapt if necessary	Assess if national CBFM programmes are improving resource stocks and community livelihoods
Where?	All communities engaged in CBFM	Selected sites
What?	Local measures	Wider fisheries health indicators
How?	Simple methods with limited capacity and equipment requirements	More complex methods with data collection and analysis capacity required
By whom?	Community members	Government officers
Costs	No cost or very limited at inception and not much time required from communities.	Within government budgets



Session objectives

1. To contribute to the development of a CBFM monitoring guide for the Pacific through:
 - Information gathering on CBFM monitoring across the region such as:
 - ✓ Monitoring methods
 - ✓ Use of data for management
 - ✓ Costs
 - ✓ Lessons
 - Feedback from the workshop on needs related to the guide.
2. To share experiences on the implementation of CBFM monitoring at both community and national levels



Session schedule

Breakout group discussions

60 minutes

Reporting back

20 minutes

Introduction to the CBFM guide

30 minutes

- Context for the development of the guide
- Plenary discussion on needs regarding the contents
- Advisory group creation



Breakout Groups

Group 1

Monitoring Level: community/site level

Participants: community representatives

Group 3

Monitoring Level: community/site level

Participants: governments

Group 2

Monitoring Level: community/site level

Participants: NGOs and CSOs supporting communities

Group 4

Monitoring: national/CBFM programme level

Participants: governments and institutions directly supporting governments on CBFM monitoring

Note: Governments participants from each country to split into group 3 and 4



CBFM Monitoring Guide

- Range of fisheries monitoring methods currently used in the Pacific for CBFM – how to choose?
- Lack of information about resources required to implement CBFM monitoring, and the advantages and disadvantages of each method.



CBFM Monitoring Guide

Scaling up
community-based
fisheries management

Transposition à grande
échelle de la gestion
communautaire des pêches

Regional
Workshop
Tanoa Int. Nadi, Fiji
29 April-3 May 2024



SPC contracted Caroline and team (Teri Tuxson and Hugh Govan)

Outcome is a guide presenting fisheries monitoring methods for use by CBFM practitioners

Milestone	Date
Co-facilitate workshop session collecting information, format of guide decided upon, and advisory group formed	5 May 2024
First draft of guide completed	30 August 2024
Review process completed and fisheries newsletter article drafted	30 September 2024
Final guide & fisheries newsletter article approved by SPC and completed.	31 October 2024



Feedback from workshop participants

What information would you expect to see in this guide?



Guide development advisory group

Seeking volunteers among workshop participants to be part of the group



Next steps

Finalize the review of current CBFM monitoring in the Pacific

- Collate information from Breakout Groups
- Follow-up with participants if needed during the workshop and after if needed

Draft a first outline of the guide

- Confirm the scope
- Select the monitoring methods to be displayed
- Select the information to be included for each method

Draft the guide by August 30th