

**SECRETARIAT OF THE  
PACIFIC COMMUNITY**

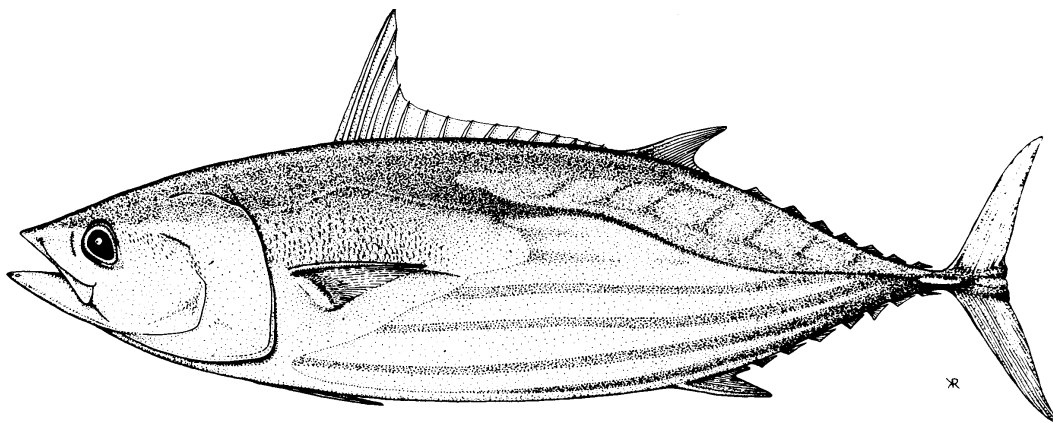
**SECRÉTARIAT GÉNÉRAL DE LA  
COMMUNAUTÉ DU PACIFIQUE**

**WESTERN AND CENTRAL PACIFIC  
OCEAN TUNA BULLETIN**

**BULLETIN DES THONIDÉS POUR L'OCÉAN  
PACIFIQUE OCCIDENTAL ET CENTRAL**

**JANUARY 2006**

**JANVIER 2006**



Oceanic Fisheries Programme  
Secretariat of the  
Pacific Community  
Noumea, New Caledonia



Programme pêche hauturière  
Secrétariat général de la  
Communauté du Pacifique  
Nouméa, Nouvelle-Calédonie

© Copyright Secretariat of the Pacific Community, 2006

All rights for commercial / for profit reproduction or translation, in any form, reserved. The SPC authorises the partial reproduction or translation of this material for scientific, educational or research purposes, provided that SPC and the source document are properly acknowledged. Permission to reproduce the document and/or translate in whole, in any form, whether for commercial / for profit or non-profit purposes, must be requested in writing. Original SPC artwork may not be altered or separately published without permission.

Original text: English

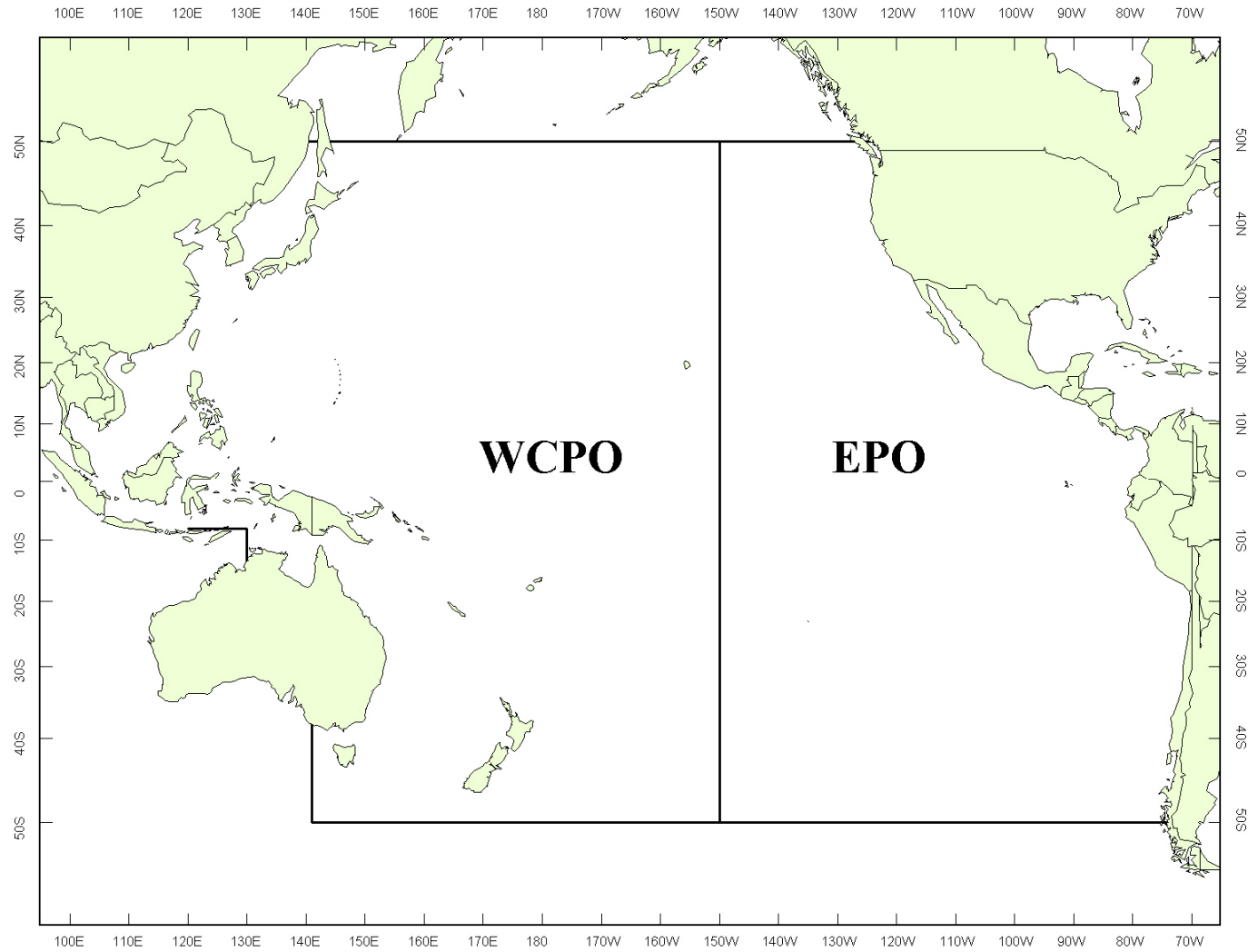
© Copyright Secrétariat général de la Communauté du Pacifique, 2006

Tous droits réservés de reproduction ou de traduction à des fins commerciales/lucratives, sous quelque forme que ce soit. Le Secrétariat général de la Communauté du Pacifique autorise la reproduction ou la traduction partielle de ce document à des fins scientifiques ou éducatives ou pour les besoins de la recherche, à condition qu'il soit fait mention de la CPS et de la source. L'autorisation de la reproduction et/ou de la traduction intégrale ou partielle de ce document, sous quelque forme que ce soit, à des fins commerciales/lucratives ou à titre gratuit, doit être sollicitée au préalable par écrit. Il est interdit de modifier ou de publier séparément des graphismes originaux de la CPS sans autorisation préalable.

Texte original : anglais

## TABLE OF CONTENTS

LONGLINE.....	5
Australia.....	5
China, offshore .....	7
Cook Islands .....	9
Federated States of Micronesia.....	11
Fiji Islands .....	13
French Polynesia.....	15
Japan .....	17
New Caledonia .....	19
Papua New Guinea .....	21
Samoa .....	23
Chinese Taipei, offshore, east of 130°E .....	25
Chinese Taipei, distant-water .....	27
POLE-AND-LINE .....	29
Japan .....	29
Solomon Islands .....	31
PURSE SEINE.....	33
Federated States of Micronesia.....	33
Japan .....	35
Papua New Guinea .....	37
Republic of Korea.....	39
Chinese Taipei .....	41
United States of America.....	43



**Figure 1. Western and Central Pacific Ocean (WCPO) and Eastern Pacific Ocean (EPO)**

**Figure 1. Océan Pacifique occidental et central (WCPO) et Océan Pacifique Est (EPO)**

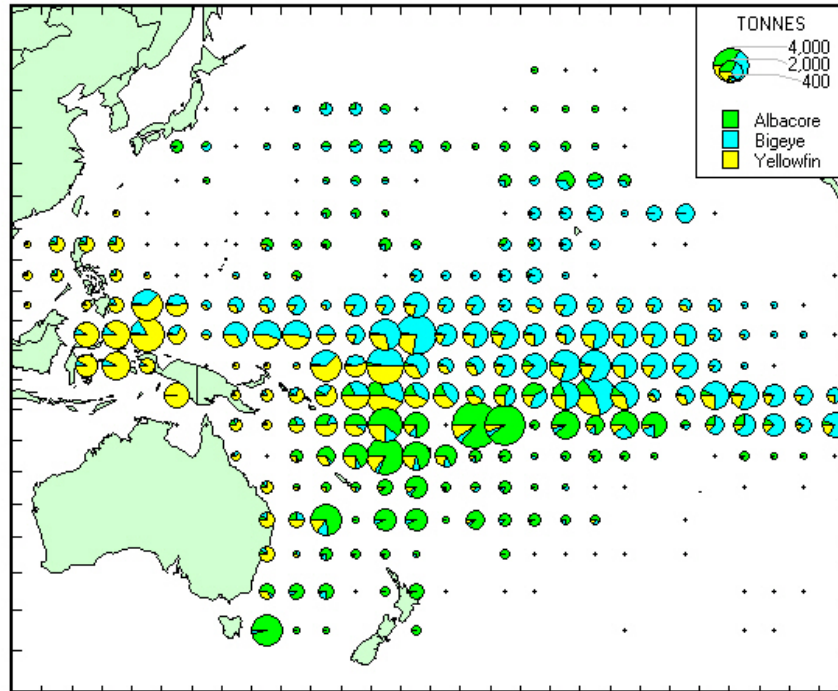


Figure 2. Longliner catch in 2002, determined from data held at SPC on 31 December 2005

Figure 2. Prises à la palangre en 2002 à partir des données dont disposait la CPS au 31 décembre 2005

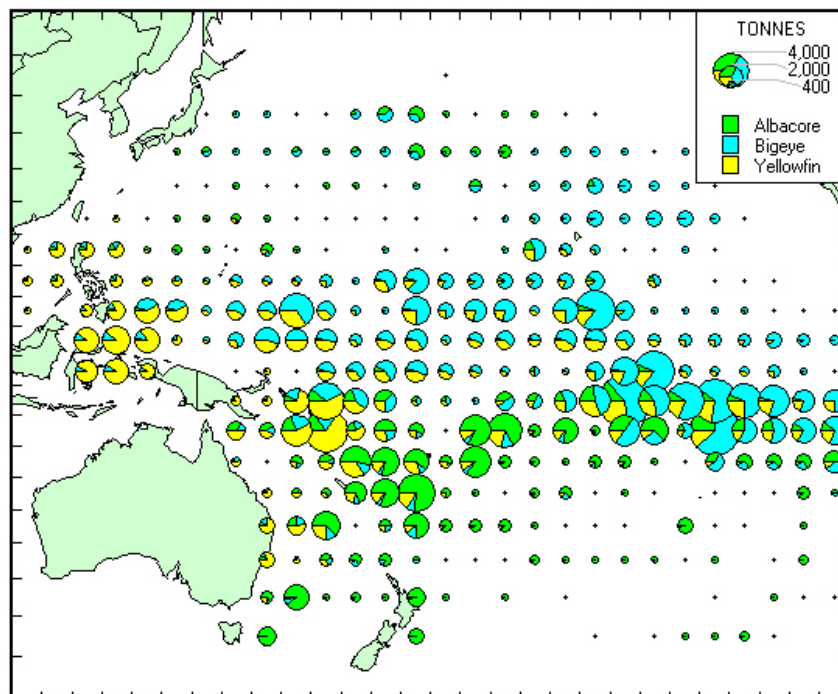
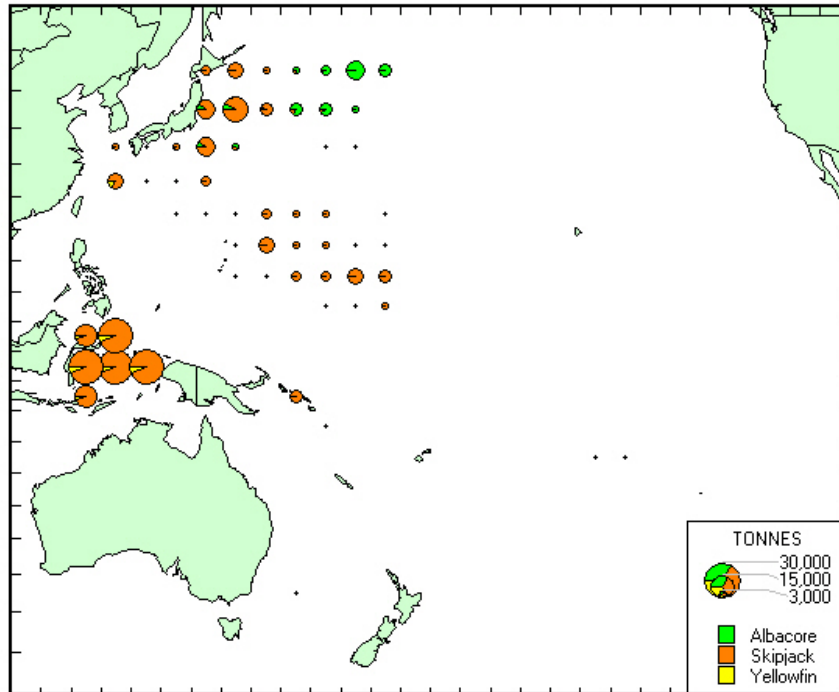


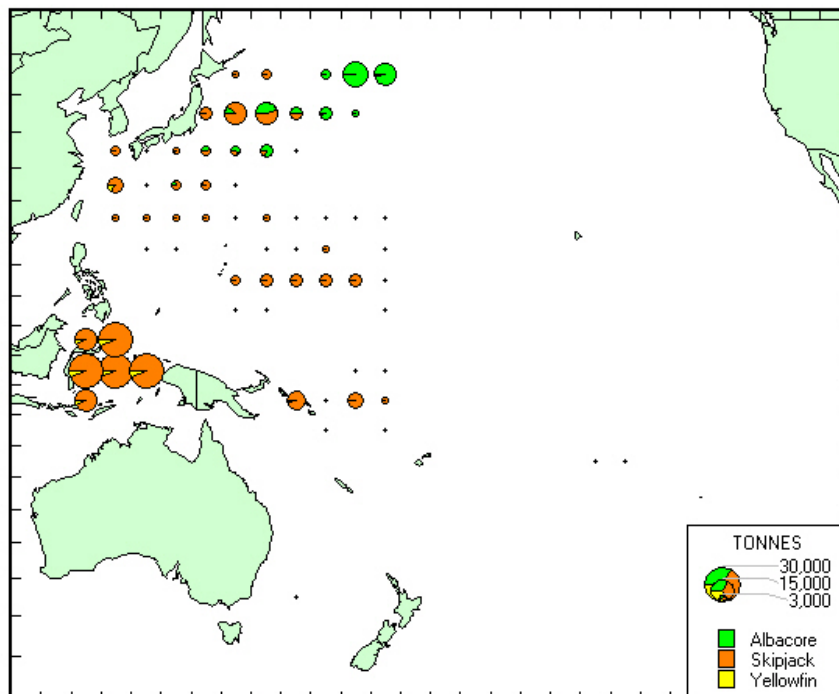
Figure 3. Longliner catch in 2003, determined from data held at SPC on 31 December 2005

Figure 3. Prises à la palangre en 2003 à partir des données dont disposait la CPS au 31 décembre 2005



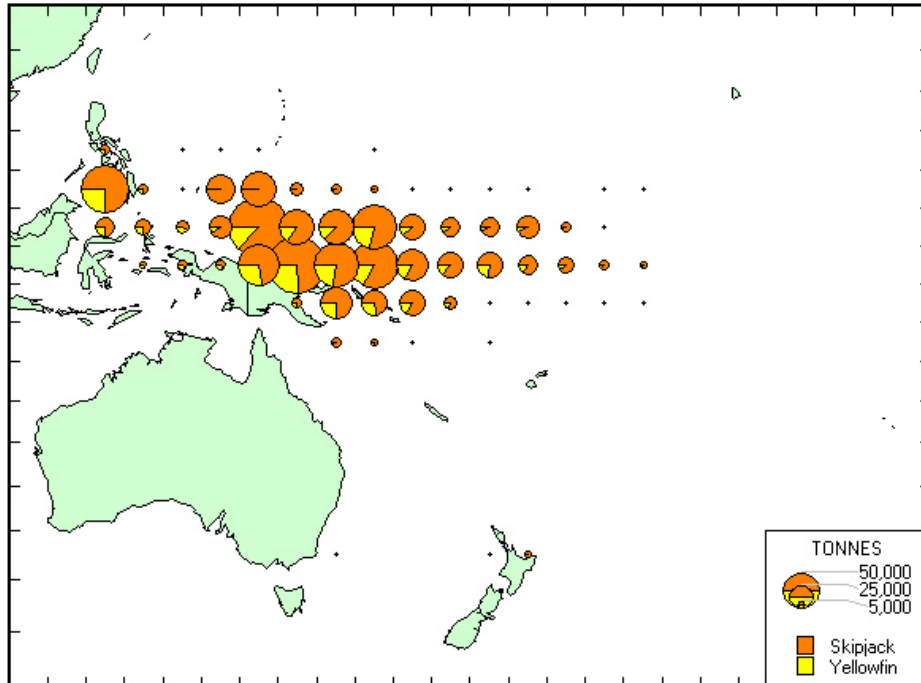
**Figure 4. Pole-and-line catch in 2001, determined from data held at SPC on 31 December 2005**

**Figure 4. Prises de pêche à la canne en 2001 à partir des données dont disposait la CPS au 31 décembre 2005**



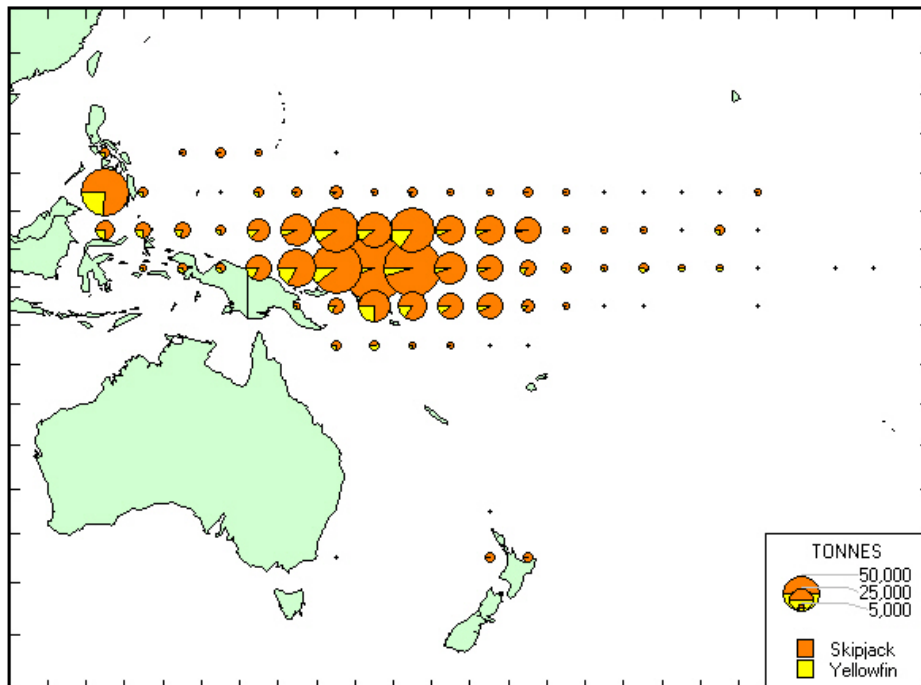
**Figure 5. Pole-and-line catch in 2002, determined from data held at SPC on 31 December 2005**

**Figure 5. Prises de pêche à la canne en 2002 à partir des données dont disposait la CPS au 31 décembre 2005**



**Figure 6. Purse-seine catch in 2003, determined from data held at SPC on 31 December 2005**

**Figure 6. Prises de pêche à la senne en 2003 à partir des données dont disposait la CPS au 31 décembre 2005**



**Figure 7. Purse-seine catch in 2004, determined from data held at SPC on 31 December 2005**

**Figure 7. Prises de pêche à la senne en 2004 à partir des données dont disposait la CPS au 31 décembre 2005**

## LONGLINE: AUSTRALIA

The statistics in Table 1, which cover Australian longliners in the Western and Central Pacific Ocean (Figure 1), were determined from logsheet data held at SPC on 31 December 2005. Coverage rates are 85 per cent for 2003 and 100 per cent for 2004; the statistics in Table 1 have not been raised to represent complete coverage. Figure 8 presents catch rates for albacore, bigeye and yellowfin. Figure 9 presents estimates of annual catches.

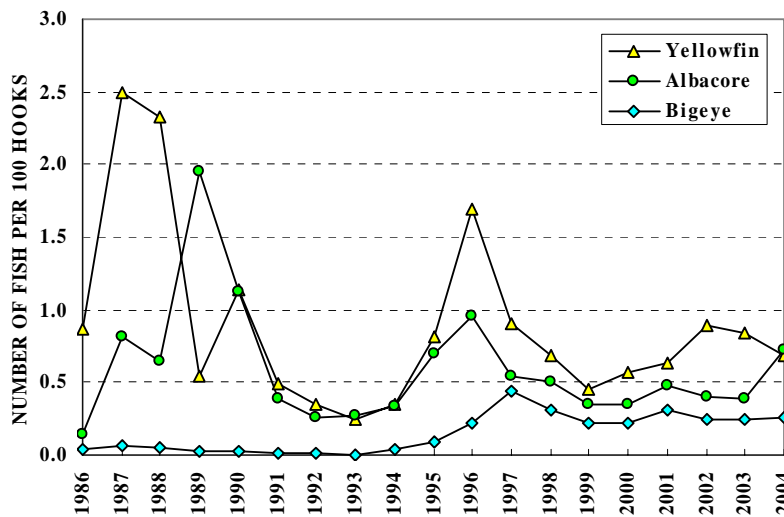


Figure 8. Australian longliner catch rates

Figure 8. Taux de prise des palangriers d'Australie

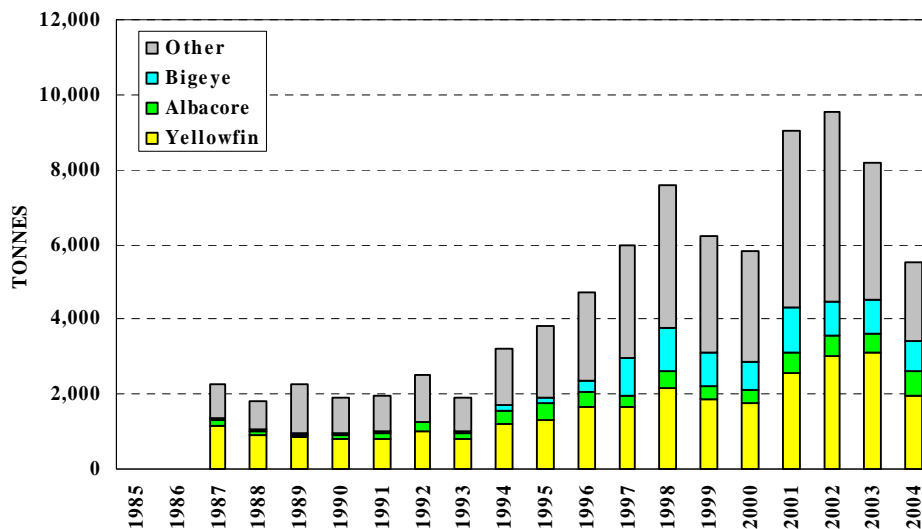


Figure 9. Catches by Australian longliners

Figure 9. Prises des palangriers d'Australie



**Table 1. Catch statistics for Australian longliners.** Units: Days Covered = days on which hooks were set; Catch = tonnes; CPUE = number of fish per 100 hooks.

**Tableau 1. Statistiques de prise des palangriers d'Australie.** Unités : Nbr. de Jours = nombre de jours de mise en place des hameçons; Prises = tonnes; PUE = nombre de poissons capturés pour 100 hameçons mouillés.

MONTH	VESSELS COVERED	DAYS COVERED	ALBACORE		BIGEYE		YELLOWFIN		OTHERS	TOTAL	
			CATCH	CPUE	CATCH	CPUE	CATCH	CPUE		CATCH	CPUE
MOIS	NBR. DE NAVIRES	NBR. DE JOURS	GERMON		THON OBÈSE		THON JAUNE		AUTRES	TOTAL	
			PRISES	PUE	PRISES	PUE	PRISES	PUE		PRISES	PUE
JAN/03	123	1,125	20	0.15	50	0.17	197	0.63	285	552	1.92
FEB	121	1,113	13	0.09	62	0.19	254	0.76	313	642	2.14
MAR	120	1,205	16	0.11	81	0.22	263	0.74	232	593	1.95
APR	121	1,129	20	0.14	110	0.36	262	0.80	138	529	2.05
MAY	120	1,197	39	0.24	147	0.41	205	0.66	174	564	2.08
JUN	118	1,161	105	0.83	99	0.34	204	0.65	187	595	2.53
JUL	118	1,173	96	0.90	93	0.32	211	0.67	209	610	2.60
AUG	121	1,204	80	0.84	77	0.31	431	1.54	218	806	3.55
SEP	116	1,042	49	0.52	64	0.26	374	1.38	212	699	2.95
OCT	122	1,174	43	0.39	53	0.21	336	0.96	202	634	2.31
NOV	105	984	16	0.18	20	0.07	203	0.72	196	435	1.81
DEC	98	735	9	0.11	18	0.09	100	0.47	187	314	1.71
TOT	153	13,242	506	0.39	876	0.25	3,040	0.84	2,553	6,974	2.32
AVG	117	1,104	42	0.38	73	0.25	253	0.83	213	581	2.30
JAN/04	92	762	10	0.13	19	0.09	106	0.54	165	301	1.87
FEB	94	654	6	0.09	19	0.10	69	0.42	152	246	1.82
MAR	94	841	18	0.21	34	0.14	93	0.39	215	361	2.10
APR	101	945	33	0.32	80	0.29	109	0.36	234	455	2.71
MAY	103	1,140	70	0.59	138	0.46	152	0.54	196	556	2.56
JUN	104	966	131	1.54	103	0.40	98	0.36	179	511	3.18
JUL	106	1,114	163	1.73	129	0.43	155	0.49	255	702	3.55
AUG	100	907	104	1.46	77	0.36	202	0.86	206	589	3.68
SEP	100	970	73	0.86	47	0.21	358	1.66	188	666	3.53
OCT	98	692	25	0.37	37	0.24	169	1.04	154	384	2.56
NOV	88	737	18	0.26	24	0.11	162	0.88	228	432	2.40
DEC	78	595	8	0.15	15	0.09	131	0.87	144	299	2.22
TOT	127	10,323	660	0.72	723	0.26	1,803	0.69	2,317	5,503	2.76
AVG	97	860	55	0.64	60	0.24	150	0.70	193	459	2.68
JAN/05	82	633	8	0.13	22	0.11	94	0.61	168	291	2.12
FEB	76	715	13	0.18	38	0.17	110	0.49	169	330	1.96
MAR	68	600	10	0.17	43	0.23	81	0.45	131	265	1.89
APR	39	244	7	0.30	25	0.29	28	0.36	63	124	2.20
MAY	2	2	0	0.00	0	0.29	0	0.00	0	1	2.42
JUN	0	—	—	—	—	—	—	—	—	—	—
JUL	0	—	—	—	—	—	—	—	—	—	—
AUG	0	—	—	—	—	—	—	—	—	—	—
SEP	0	—	—	—	—	—	—	—	—	—	—
OCT	0	—	—	—	—	—	—	—	—	—	—
NOV	0	—	—	—	—	—	—	—	—	—	—
DEC	0	—	—	—	—	—	—	—	—	—	—
TOT	84	2,194	37	0.18	128	0.18	313	0.50	531	1,010	2.01
AVG	53	439	7	0.16	26	0.22	63	0.38	106	202	2.12

## LONGLINE: CHINA

The statistics in Table 2, which cover offshore Chinese longliners in the Western and Central Pacific Ocean (Figure 1), were determined from logsheet data held at SPC on 31 December 2005. The coverage rate is 23 per cent for 2003; the statistics in Table 2 have not been raised to represent complete coverage. Figure 10 presents catch rates for albacore, bigeye and yellowfin. Table 2 and Figure 10 do not cover longliners targeting albacore in temperate waters during 1999–2005. Figure 11 presents estimates of annual catches.

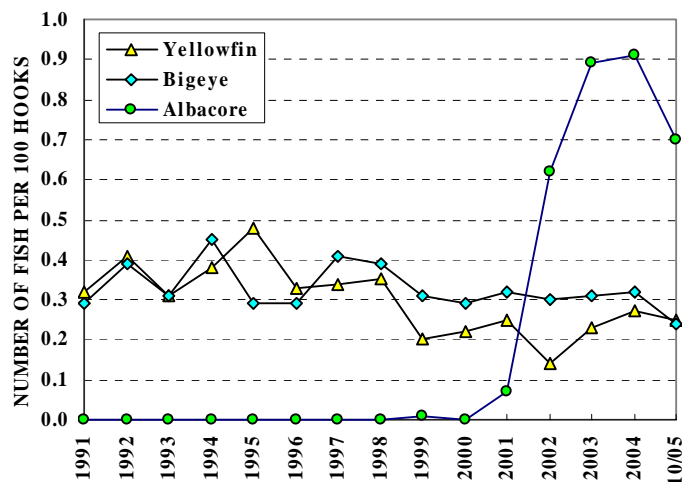


Figure 10. Chinese offshore longliner catch rates

Figure 10. Taux de prise des palangriers de Chine pêchant au large

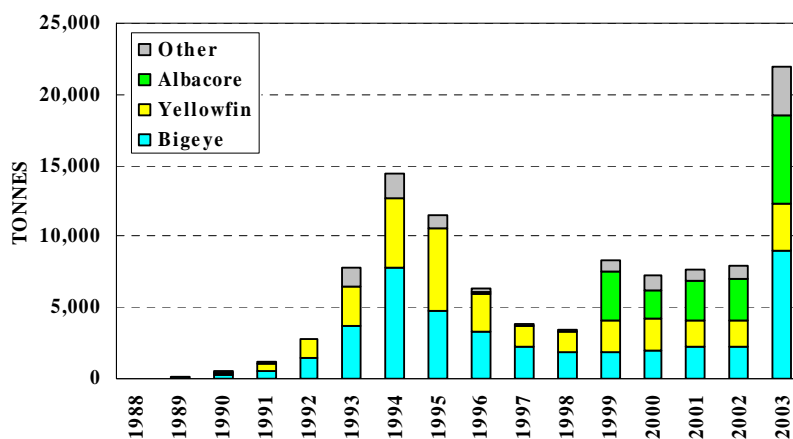


Figure 11. Catches by Chinese longliners

Figure 11. Prises des palangriers de Chine

**Table 2. Catch statistics for Chinese offshore longliners.** Units: Days Covered = days on which hooks were set; Catch = tonnes; CPUE = number of fish per 100 hooks.

**Tableau 2. Statistiques de prise des palangriers de la Chine pêchant au large.** Unités : Nbr. de Jours = nombre de jours de mise en place des hameçons; Prises = tonnes; PUE = nombre de poissons capturés pour 100 hameçons mouillés.

MONTH	VESSELS COVERED	DAYS COVERED	ALBACORE		BIGEYE		YELLOWFIN		OTHERS	TOTAL	
			CATCH	CPUE	CATCH	CPUE	CATCH	CPUE		CATCH	CPUE
MOIS	NBR. DE NAVIRES	NBR. DE JOURS	GERMON		THON OBÈSE		THON JAUNE		AUTRES	TOTAL	
			PRISES	PUE	PRISES	PUE	PRISES	PUE		PRISES	PUE
JAN/03	44	524	84	0.77	111	0.49	62	0.32	30	286	1.78
FEB	56	810	33	0.24	122	0.39	73	0.30	40	268	1.10
MAR	49	913	30	0.21	129	0.40	64	0.28	66	290	1.19
APR	53	934	54	0.33	138	0.42	118	0.56	73	382	1.72
MAY	54	1,010	197	0.91	144	0.41	85	0.31	89	515	1.98
JUN	49	823	158	0.88	109	0.36	80	0.35	76	422	1.93
JUL	45	709	230	1.34	67	0.19	63	0.24	76	435	2.29
AUG	61	1,034	195	1.04	104	0.22	45	0.12	70	414	1.67
SEP	67	1,219	170	0.75	136	0.25	48	0.14	68	422	1.43
OCT	64	1,043	154	0.63	130	0.29	47	0.15	63	394	1.34
NOV	64	1,233	356	1.29	139	0.24	56	0.14	67	618	1.85
DEC	64	1,176	388	1.59	120	0.22	61	0.15	63	632	2.16
TOT	102	11,428	2,049	0.89	1,448	0.31	802	0.23	780	5,079	1.72
AVG	56	952	171	0.83	121	0.32	67	0.26	65	423	1.70
JAN/04	56	836	218	1.11	93	0.21	46	0.15	45	403	1.61
FEB	43	629	106	0.70	77	0.25	38	0.16	30	251	1.24
MAR	37	551	57	0.45	50	0.20	40	0.24	27	174	1.04
APR	42	604	75	0.52	44	0.14	75	0.39	25	219	1.16
MAY	49	855	133	0.62	114	0.31	123	0.37	34	404	1.42
JUN	60	891	227	0.91	167	0.39	120	0.33	43	557	1.78
JUL	58	875	279	1.15	200	0.38	162	0.42	61	702	2.15
AUG	46	665	453	2.74	169	0.39	116	0.32	62	800	3.69
SEP	43	623	112	0.69	184	0.46	78	0.25	43	417	1.53
OCT	45	680	121	0.45	180	0.35	44	0.13	42	387	1.07
NOV	47	733	168	0.57	189	0.34	59	0.14	51	468	1.20
DEC	64	987	147	0.62	195	0.28	134	0.25	55	530	1.26
TOT	106	8,929	2,095	0.91	1,664	0.32	1,035	0.27	519	5,313	1.64
AVG	49	744	175	0.88	139	0.31	86	0.26	43	443	1.60
JAN/05	59	1,028	102	0.30	230	0.33	157	0.29	64	553	1.04
FEB	48	672	55	0.25	118	0.25	70	0.19	39	282	0.80
MAR	45	583	41	0.25	103	0.26	48	0.16	33	226	0.77
APR	26	230	62	0.85	38	0.19	33	0.22	17	149	1.41
MAY	37	636	124	0.58	139	0.29	103	0.25	69	434	1.34
JUN	34	525	163	0.90	82	0.20	97	0.28	45	387	1.56
JUL	23	365	147	1.19	47	0.15	72	0.32	32	298	1.84
AUG	18	281	168	2.18	41	0.16	48	0.33	34	291	2.92
SEP	25	372	121	1.04	48	0.17	36	0.17	41	246	1.65
OCT	4	35	21	1.49	2	0.07	3	0.13	7	32	2.37
NOV	0	—	—	—	—	—	—	—	—	—	—
DEC	0	—	—	—	—	—	—	—	—	—	—
TOT	80	4,727	1,004	0.70	847	0.24	666	0.25	380	2,898	1.35
AVG	32	473	100	0.90	85	0.21	67	0.23	38	290	1.57

### LONGLINE: COOK ISLANDS

The statistics in Table 3, which cover Cook Islands, were determined from logsheet data held at SPC on 31 December 2005. Coverage rates are 99 per cent for 2003 and 89 per cent for 2004; the statistics in Table 3 have not been raised to represent complete coverage. Figure 12 presents catch rates for albacore, bigeye and yellowfin. Figure 13 presents estimates of annual catches.

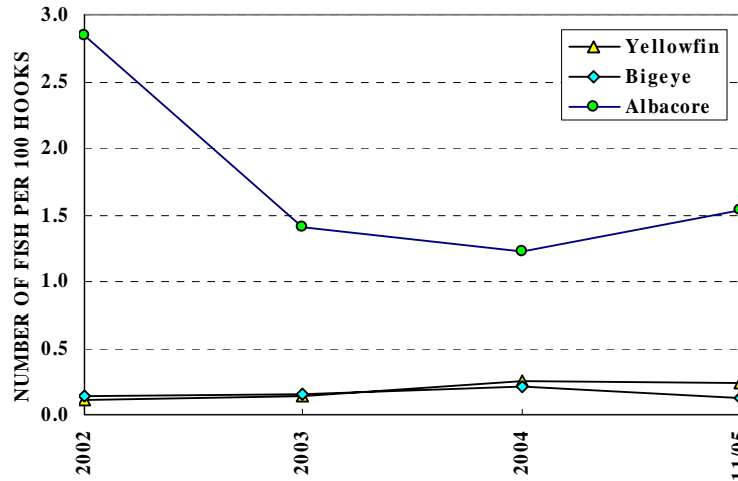


Figure 12. Cook Islands longliner catch rates

Figure 12. Taux de prise des palangriers des Îles Cook

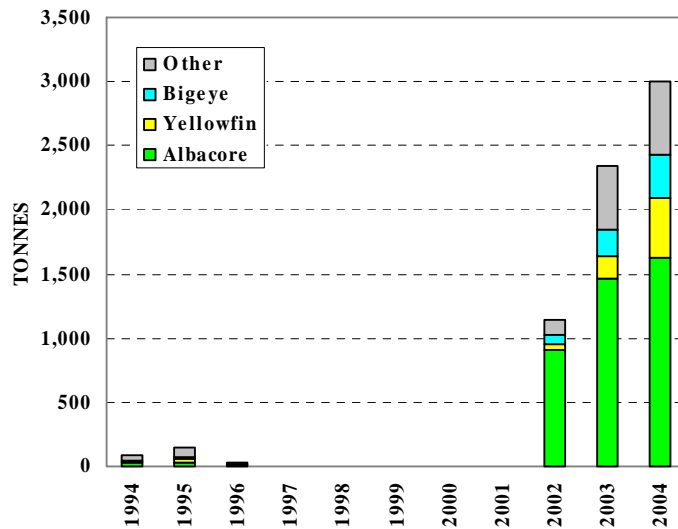


Figure 13. Catches by Cook Islands longliners

Figure 13. Prises des palangriers des Îles Cook

**Table 3. Catch statistics for Cook Islands longliners.** Units: Days Covered = days on which hooks were set; Catch = tonnes; CPUE = number of fish per 100 hooks.

**Tableau 3. Statistiques de prise des palangriers des Îles Cook.** Unités : Nbr. de Jours = nombre de jours de mise en place des hameçons; Prises = tonnes; PUE = nombre de poissons capturés pour 100 hameçons mouillés.

MONTH	VESSELS COVERED	DAYS COVERED	ALBACORE		BIGEYE		YELLOWFIN		OTHERS	TOTAL	
			CATCH	CPUE	CATCH	CPUE	CATCH	CPUE		CATCH	CPUE
MOIS	NBR. DE NAVIRES	NBR. DE JOURS	GERMON		THON OBÈSE		THON JAUNE		AUTRES	TOTAL	
			PRISES	PUE	PRISES	PUE	PRISES	PUE		PRISES	PUE
JAN/03	9	112	70	1.90	5	0.12	5	0.10	16	96	2.74
FEB	5	69	39	1.82	4	0.15	7	0.24	13	63	3.46
MAR	8	127	47	1.05	6	0.09	13	0.27	15	82	1.87
APR	13	163	78	1.42	13	0.18	21	0.29	22	134	2.41
MAY	15	163	166	2.89	23	0.29	20	0.23	22	231	3.92
JUN	15	190	115	1.86	12	0.14	17	0.16	27	171	2.63
JUL	18	184	72	1.30	9	0.13	8	0.08	33	122	2.22
AUG	29	333	149	1.32	20	0.14	10	0.05	88	267	2.16
SEP	30	355	133	1.14	31	0.23	20	0.16	59	244	1.92
OCT	34	464	153	1.06	48	0.28	26	0.17	91	319	1.93
NOV	35	491	227	1.38	16	0.08	14	0.09	90	346	1.96
DEC	30	368	157	1.26	11	0.08	13	0.12	63	244	1.84
TOT	46	3,019	1,406	1.41	198	0.16	176	0.14	539	2,318	2.21
AVG	20	252	117	1.53	16	0.16	15	0.16	45	193	2.42
JAN/04	19	285	112	1.07	7	0.06	11	0.11	40	170	1.55
FEB	17	227	35	0.50	5	0.06	7	0.08	28	74	0.92
MAR	14	157	43	0.91	16	0.38	29	0.72	13	101	2.29
APR	18	219	65	0.96	20	0.30	28	0.41	25	138	1.95
MAY	24	369	162	1.39	41	0.29	30	0.21	45	278	2.19
JUN	26	278	180	1.92	18	0.14	22	0.16	38	258	2.67
JUL	22	254	131	1.46	20	0.20	52	0.51	46	250	3.19
AUG	21	291	134	1.37	34	0.34	56	0.46	53	278	3.06
SEP	23	331	167	1.53	51	0.43	56	0.37	63	338	3.02
OCT	26	337	147	1.34	32	0.23	26	0.15	48	253	2.08
NOV	23	441	183	1.15	38	0.18	39	0.15	87	347	1.99
DEC	21	377	103	0.82	12	0.08	14	0.07	75	204	1.40
TOT	41	3,566	1,463	1.23	295	0.21	369	0.25	560	2,687	2.18
AVG	21	297	122	1.20	25	0.22	31	0.28	47	224	2.19
JAN/05	19	283	59	0.59	10	0.08	9	0.06	42	120	1.12
FEB	15	163	24	0.39	6	0.06	7	0.06	37	74	0.94
MAR	15	236	18	0.23	8	0.07	18	0.12	49	93	0.74
APR	16	178	11	0.22	8	0.10	11	0.12	31	61	0.79
MAY	21	390	266	1.96	30	0.15	42	0.22	62	400	2.75
JUN	25	445	340	2.32	23	0.10	68	0.29	69	500	3.33
JUL	23	339	147	1.27	36	0.21	69	0.39	42	293	2.18
AUG	19	245	194	2.15	18	0.14	35	0.35	22	270	2.96
SEP	18	293	238	2.37	17	0.10	31	0.25	38	322	3.03
OCT	11	104	68	2.39	6	0.13	9	0.39	19	102	3.53
NOV	3	13	1	0.34	0	0.04	0	0.12	2	2	1.04
DEC	0	—	—	—	—	—	—	—	—	—	—
TOT	30	2,689	1,365	1.53	161	0.12	300	0.24	413	2,239	2.29
AVG	17	244	124	1.29	15	0.11	27	0.22	38	204	2.04

**LONGLINE: FEDERATED STATES OF MICRONESIA**

The statistics in Table 4 were determined from logsheet data held at SPC on 31 December 2005. The coverage rate is 61 per cent for 2003 and 51 per cent for 2004; the statistics in Table 4 have not been raised to represent complete coverage. Figure 14 presents catch rates for bigeye and yellowfin. Figure 15 presents estimates of annual catches.

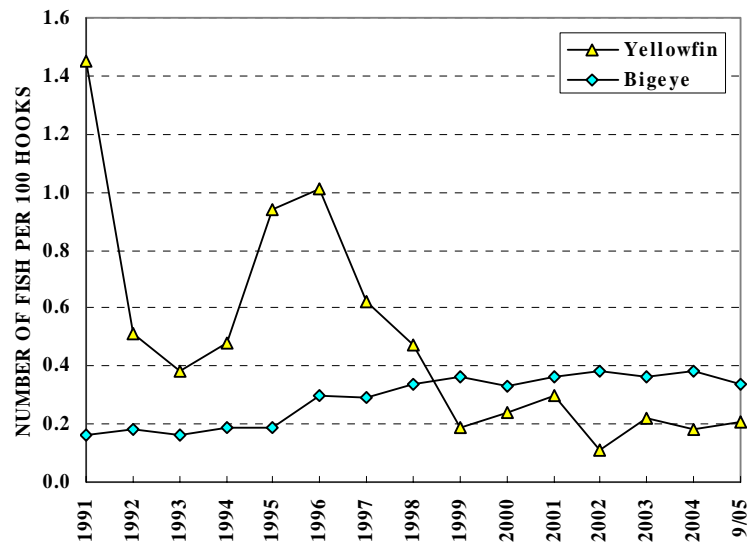


Figure 14. Federated States of Micronesia longliner catch rates

Figure 14. Taux de prise des palangriers des États fédérés de Micronésie

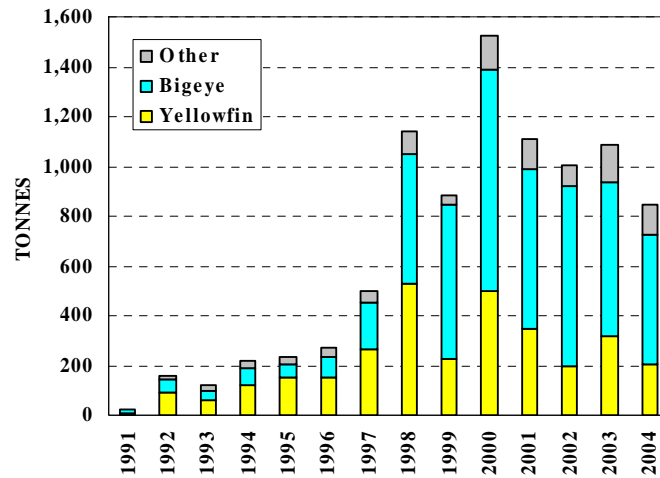


Figure 15. Catches by Federated States of Micronesia longliners

Figure 15. Prises des palangriers des États fédérés de Micronésie

**Table 4. Catch statistics for Federated States of Micronesia longliners.** Units: Days Covered = days on which hooks were set; Catch = tonnes; CPUE = number of fish per 100 hooks.

**Tableau 4. Statistiques de prise des palangriers des États Fédérés de Micronésie.** Unités : Nbr. de Jours = nombre de jours de mise en place des hameçons; Prises = tonnes; PUE = nombre de poissons capturés pour 100 hameçons mouillés.

MONTH	VESSELS COVERED	DAYS COVERED	ALBACORE		BIGEYE		YELLOWFIN		OTHERS	TOTAL	
			CATCH	CPUE	CATCH	CPUE	CATCH	CPUE	CATCH	CATCH	CPUE
MOIS	NBR. DE NAVIRES	NBR. DE JOURS	GERMON		THON OBÈSE		THON JAUNE		AUTRES	TOTAL	
			PRISES	PUE	PRISES	PUE	PRISES	PUE	PRISES	PRISES	PUE
JAN/03	16	227	0	0.00	42	0.41	23	0.32	4	69	0.78
FEB	16	215	0	0.00	51	0.58	22	0.34	6	79	1.02
MAR	15	196	0	0.00	41	0.40	19	0.27	11	71	0.88
APR	8	89	0	0.00	17	0.37	13	0.44	2	32	0.85
MAY	8	119	0	0.00	13	0.25	9	0.26	4	26	0.58
JUN	8	131	0	0.00	19	0.31	12	0.34	5	36	0.74
JUL	5	86	0	0.00	15	0.33	5	0.15	4	24	0.56
AUG	16	149	0	0.01	23	0.30	7	0.15	5	35	0.52
SEP	16	252	0	0.00	39	0.29	10	0.11	9	58	0.47
OCT	13	223	0	0.01	34	0.29	12	0.14	13	59	0.58
NOV	14	244	0	0.00	54	0.38	13	0.13	14	81	0.65
DEC	17	273	0	0.00	54	0.38	25	0.24	17	96	0.78
TOT	25	2,204	1	0.00	402	0.36	169	0.22	94	665	0.70
AVG	13	184	0	0.00	33	0.36	14	0.24	8	55	0.70
JAN/04	18	239	0	0.00	50	0.39	16	0.17	14	80	0.70
FEB	12	91	0	0.00	22	0.40	15	0.38	5	42	0.91
MAR	4	99	0	0.00	22	0.29	7	0.14	4	34	0.51
APR	4	87	0	0.00	11	0.17	5	0.11	4	20	0.36
MAY	4	89	0	0.00	19	0.28	6	0.13	3	29	0.48
JUN	4	50	0	0.00	16	0.42	2	0.08	5	23	0.65
JUL	4	91	0	0.00	31	0.46	5	0.11	6	42	0.67
AUG	3	54	0	0.00	20	0.52	4	0.14	3	27	0.75
SEP	4	68	0	0.00	19	0.45	7	0.22	4	31	0.77
OCT	4	99	0	0.00	29	0.42	5	0.10	4	38	0.61
NOV	4	69	0	0.00	21	0.42	9	0.26	4	34	0.78
DEC	4	63	0	0.00	20	0.45	14	0.41	3	37	0.95
TOT	18	1,099	0	0.00	280	0.38	96	0.18	59	435	0.67
AVG	6	92	0	0.00	23	0.39	8	0.19	5	36	0.68
JAN/05	4	92	0	0.00	25	0.37	19	0.38	5	49	0.82
FEB	6	38	0	0.00	5	0.20	4	0.24	2	11	0.52
MAR	4	39	0	0.00	6	0.26	3	0.16	1	10	0.47
APR	3	19	0	0.00	4	0.31	1	0.11	1	7	0.49
MAY	6	100	0	0.00	29	0.44	7	0.12	9	44	0.68
JUN	5	45	0	0.00	10	0.34	3	0.13	3	16	0.56
JUL	2	20	0	0.00	5	0.28	4	0.42	2	10	0.82
AUG	2	21	0	0.00	5	0.32	5	0.50	2	12	1.12
SEP	6	73	0	0.00	14	0.28	3	0.08	5	22	0.45
OCT	0	—	—	—	—	—	—	—	—	—	—
NOV	0	—	—	—	—	—	—	—	—	—	—
DEC	0	—	—	—	—	—	—	—	—	—	—
TOT	6	447	0	0.00	102	0.34	49	0.21	29	181	0.65
AVG	4	50	0	0.00	11	0.31	5	0.24	3	20	0.66

### LOGLINE: FIJI ISLANDS

The statistics in Table 5, which cover domestic Fiji Islands longliners and joint-venture longliners, were determined from logsheet data held at SPC on 31 December 2005. The coverage rate is 97 per cent for 2003 and 79 per cent for 2004; the statistics in Table 5 have not been raised to represent complete coverage. Figure 16 presents catch rates for albacore, bigeye and yellowfin. Figure 17 presents estimates of annual catches; catches for 1989–1999 have been underestimated; catches of ‘other’ species for 2002 were estimated from observer data, rather than logsheet and unloading data.

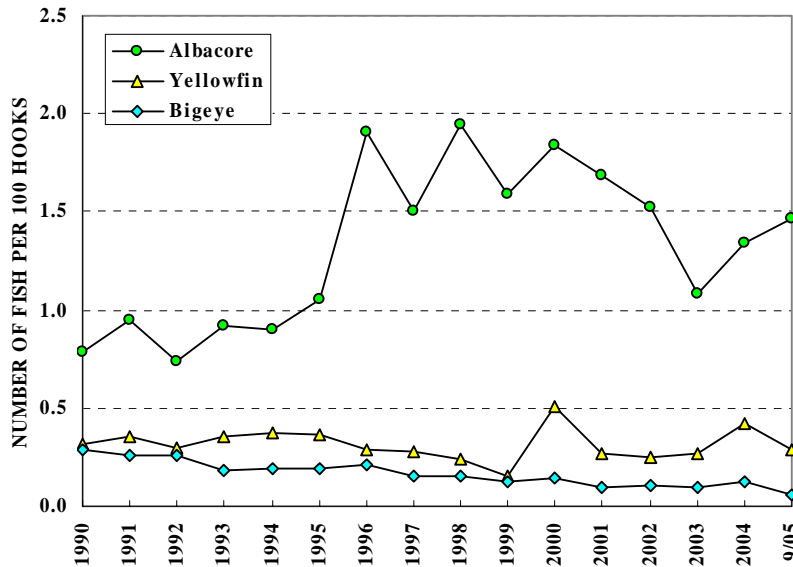


Figure 16. Fijian longliner catch rates

Figure 16. Taux de prise des palangriers des Îles Fidji

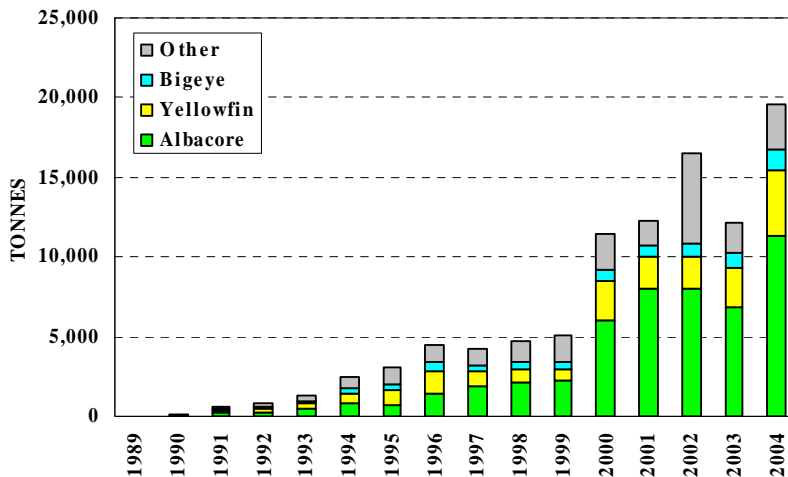


Figure 17. Catches by Fijian longliners

Figure 17. Prises des palangriers des Îles Fidji



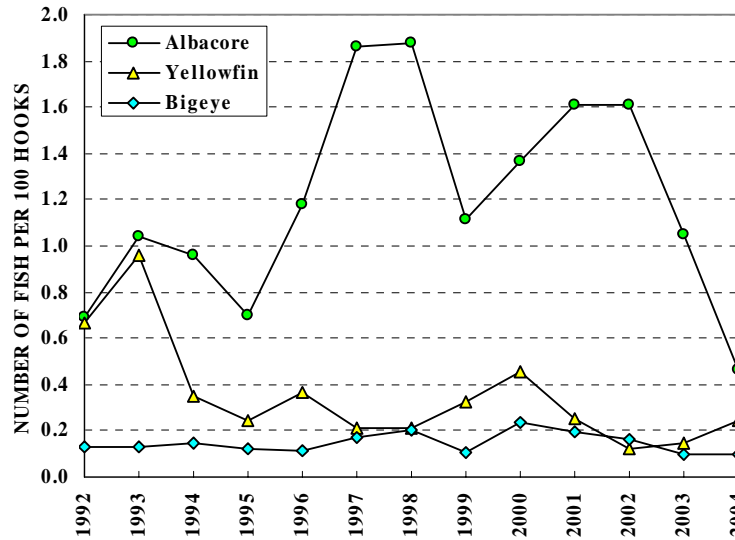
**Table 5. Catch statistics for Fiji Islands longliners.** Units: Days Covered = days on which hooks were set; Catch = tonnes; CPUE = number of fish per 100 hooks.

**Tableau 5. Statistiques de prise des palangriers des Îles Fidji.** Unités : Nbr. de Jours = nombre de jours de mise en place des hameçons; Prises = tonnes; PUE = nombre de poissons capturés pour 100 hameçons mouillés.

MONTH	VESSELS COVERED	DAYS COVERED	ALBACORE		BIGEYE		YELLOWFIN		OTHERS	TOTAL	
			CATCH	CPUE	CATCH	CPUE	CATCH	CPUE	CATCH	CATCH	CPUE
MOIS	NBR. DE NAVIRES	NBR. DE JOURS	GERMON		THON OBÈSE		THON JAUNE		AUTRES	TOTAL	
			PRISES	PUE	PRISES	PUE	PRISES	PUE	PRISES	PRISES	PUE
JAN/03	88	1,268	449	0.91	44	0.07	220	0.29	148	861	1.81
FEB	84	1,256	300	0.59	56	0.09	198	0.28	116	670	1.32
MAR	81	1,274	227	0.48	65	0.10	198	0.30	122	612	1.29
APR	76	1,076	264	0.61	84	0.16	264	0.47	112	724	1.60
MAY	86	1,408	420	0.75	103	0.15	525	0.71	132	1,180	1.94
JUN	90	1,339	522	0.99	121	0.19	307	0.41	136	1,086	1.94
JUL	89	1,449	807	1.37	72	0.11	150	0.19	147	1,176	2.09
AUG	97	1,613	1,012	1.76	42	0.05	123	0.15	152	1,328	2.39
SEP	85	1,320	522	1.07	77	0.10	70	0.10	118	786	1.59
OCT	88	1,529	711	1.18	78	0.10	86	0.12	154	1,030	1.78
NOV	87	1,622	930	1.41	52	0.06	113	0.15	153	1,248	2.00
DEC	87	1,573	893	1.39	33	0.04	111	0.14	144	1,181	1.92
TOT	121	16,727	7,057	1.08	828	0.10	2,364	0.27	1,633	11,883	1.83
AVG	87	1,394	588	1.04	69	0.10	197	0.28	136	990	1.81
JAN/04	89	1,577	717	1.11	47	0.05	126	0.16	117	1,007	1.59
FEB	75	999	319	0.76	46	0.09	103	0.22	71	539	1.29
MAR	75	1,137	250	0.56	101	0.18	236	0.47	71	659	1.38
APR	75	1,268	351	0.76	121	0.19	445	0.79	76	993	1.91
MAY	87	1,675	455	0.70	125	0.16	317	0.44	109	1,006	1.52
JUN	92	1,603	1,088	1.81	136	0.17	426	0.63	108	1,758	2.86
JUL	89	1,496	1,114	1.92	121	0.15	512	0.75	101	1,848	3.16
AUG	92	1,603	1,210	2.19	83	0.10	261	0.35	216	1,769	3.06
SEP	95	1,607	840	1.41	103	0.12	326	0.40	214	1,482	2.37
OCT	98	1,621	761	1.15	107	0.12	342	0.46	192	1,403	2.09
NOV	92	1,655	1,051	1.51	52	0.05	144	0.19	206	1,452	2.12
DEC	95	1,605	1,133	1.75	40	0.05	154	0.18	187	1,514	2.32
TOT	113	17,846	9,288	1.34	1,082	0.12	3,393	0.42	1,669	15,431	2.18
AVG	88	1,487	774	1.30	90	0.12	283	0.42	139	1,286	2.14
JAN/05	95	1,705	898	1.28	36	0.04	177	0.18	219	1,331	1.82
FEB	87	1,520	601	1.00	41	0.05	141	0.16	164	948	1.52
MAR	76	1,296	597	1.21	41	0.06	110	0.16	123	871	1.68
APR	71	928	517	1.46	42	0.08	201	0.35	89	849	2.18
MAY	67	1,072	800	1.96	35	0.06	392	0.59	131	1,357	3.11
JUN	50	547	409	1.84	49	0.14	169	0.48	63	689	2.83
JUL	25	414	367	2.16	23	0.09	87	0.46	42	519	3.14
AUG	11	204	295	2.88	7	0.05	31	0.28	31	364	3.91
SEP	10	154	126	1.64	5	0.05	21	0.29	33	185	2.87
OCT	0	—	—	—	—	—	—	—	—	—	—
NOV	0	—	—	—	—	—	—	—	—	—	—
DEC	0	—	—	—	—	—	—	—	—	—	—
TOT	103	7,840	4,610	1.47	279	0.06	1,329	0.29	894	7,112	2.19
AVG	55	871	512	1.71	31	0.07	148	0.33	99	790	2.56

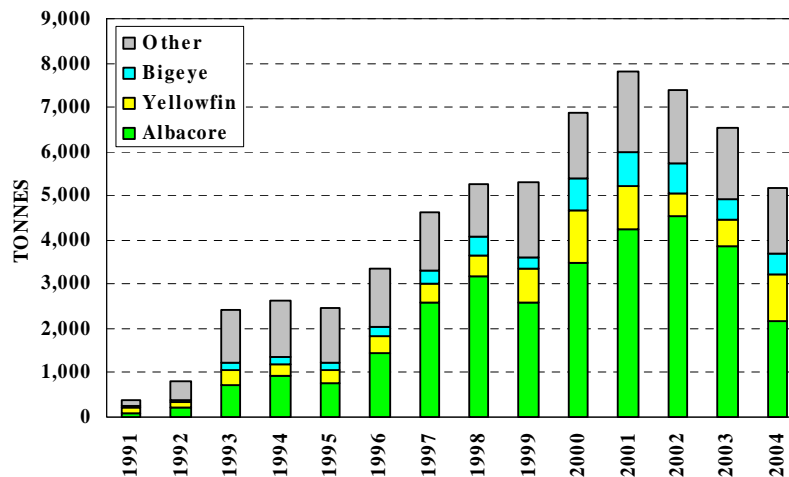
**LONGLINE: FRENCH POLYNESIA**

The statistics in Table 6 were determined from logsheet data held at SPC on 31 December 2005. Coverage rates are 72 per cent for 2003 and 53 per cent for 2004; the statistics in Table 6 have not been raised to represent complete coverage. Figure 18 presents catch rates for albacore, bigeye and yellowfin. Figure 19 presents estimates of annual catches.



**Figure 18. French Polynesian longliner catch rates**

**Figure 18. Taux de prise des palangriers de Polynésie française**



**Figure 19. Catches by French Polynesian longliners**

**Figure 19. Prises des palangriers de Polynésie française**

**Table 6. Catch statistics for French Polynesian longliners.** Units: Days Covered = days on which hooks were set; Catch = tonnes; CPUE = number of fish per 100 hooks.

**Tableau 6. Statistiques de prise des palangriers de Polynésie française.** Unités : Nbr. de Jours = nombre de jours de mise en place des hameçons; Prises = tonnes; PUE = nombre de poissons capturés pour 100 hameçons mouillés.

MONTH	VESSELS COVERED	DAYS COVERED	ALBACORE		BIGEYE		YELLOWFIN		OTHERS	TOTAL	
			CATCH	CPUE	CATCH	CPUE	CATCH	CPUE	CATCH	CATCH	CPUE
MOIS	NBR. DE NAVIRES	NBR. DE JOURS	GERMON		THON OBÈSE		THON JAUNE		AUTRES	TOTAL	
			PRISES	PUE	PRISES	PUE	PRISES	PUE	PRISES	PRISES	PUE
JAN/02	30	260	172	1.46	21	0.11	19	0.10	32	245	1.87
FEB	33	477	346	1.55	56	0.18	37	0.12	58	497	2.04
MAR	35	445	241	1.18	54	0.21	42	0.16	57	394	1.78
APR	28	355	206	1.30	39	0.19	39	0.17	43	327	1.93
MAY	37	528	478	1.93	58	0.17	72	0.18	73	682	2.55
JUN	34	446	442	2.20	44	0.16	60	0.18	45	591	2.77
JUL	31	372	223	1.37	35	0.15	16	0.07	50	324	1.86
AUG	29	374	261	1.48	33	0.13	15	0.05	62	371	2.00
SEP	28	382	312	1.75	33	0.14	13	0.05	58	415	2.28
OCT	25	305	238	1.84	41	0.22	14	0.07	37	331	2.43
NOV	25	320	249	1.67	31	0.15	23	0.10	46	348	2.17
DEC	24	245	140	1.32	14	0.09	15	0.11	38	206	1.84
TOT	44	4,509	3,309	1.61	460	0.16	365	0.12	597	4,730	2.16
AVG	30	376	276	1.59	38	0.16	30	0.11	50	394	2.13
JAN/03	32	350	267	1.70	32	0.17	58	0.33	53	410	2.57
FEB	43	471	284	1.30	34	0.14	59	0.27	73	449	2.08
MAR	41	603	322	1.11	37	0.11	73	0.25	87	519	1.88
APR	39	448	220	1.12	27	0.11	50	0.21	67	364	1.87
MAY	36	497	291	1.28	33	0.11	70	0.25	90	484	2.16
JUN	41	583	359	1.34	38	0.11	45	0.13	69	512	1.94
JUL	45	612	223	0.81	30	0.09	21	0.06	66	340	1.16
AUG	39	537	206	0.83	19	0.07	12	0.04	55	292	1.19
SEP	46	595	259	0.95	38	0.12	20	0.07	66	384	1.39
OCT	45	575	222	0.84	29	0.08	35	0.12	65	350	1.33
NOV	43	573	243	0.90	13	0.04	32	0.11	93	381	1.34
DEC	43	489	164	0.70	10	0.03	14	0.06	58	245	1.04
TOT	56	6,333	3,060	1.05	341	0.10	489	0.15	842	4,732	1.62
AVG	41	528	255	1.07	28	0.10	41	0.16	70	394	1.66
JAN/04	40	359	67	0.40	13	0.07	22	0.18	52	155	1.01
FEB	39	491	68	0.29	18	0.07	32	0.21	50	168	0.81
MAR	43	595	85	0.29	25	0.08	56	0.24	56	222	0.79
APR	49	548	93	0.36	21	0.07	83	0.39	60	256	1.15
MAY	51	648	165	0.61	34	0.11	93	0.36	75	366	1.48
JUN	49	662	171	0.54	32	0.09	77	0.25	59	339	1.24
JUL	42	552	136	0.51	29	0.10	47	0.16	46	259	1.12
AUG	41	597	130	0.46	42	0.14	57	0.14	66	296	1.07
SEP	38	431	103	0.54	35	0.17	55	0.23	45	238	1.22
OCT	31	357	99	0.59	30	0.14	54	0.25	27	210	1.17
NOV	24	334	79	0.45	14	0.07	44	0.22	41	177	0.98
DEC	12	72	16	0.38	2	0.04	5	0.09	8	31	0.76
TOT	63	5,646	1,212	0.46	293	0.10	627	0.24	585	2,717	1.10
AVG	38	471	101	0.45	24	0.10	52	0.23	49	226	1.07

### LONGLINE: JAPAN

The statistics in Table 7 and Figure 20 cover Japanese offshore and distant-water longliners in the Western and Central Pacific Ocean (Figure 1). All statistics were determined from data provided by the Fisheries Agency of Japan, grouped by 5° longitude, 5° latitude and month. Figure 21 presents estimates of annual catches in the Western and Central Pacific Ocean.

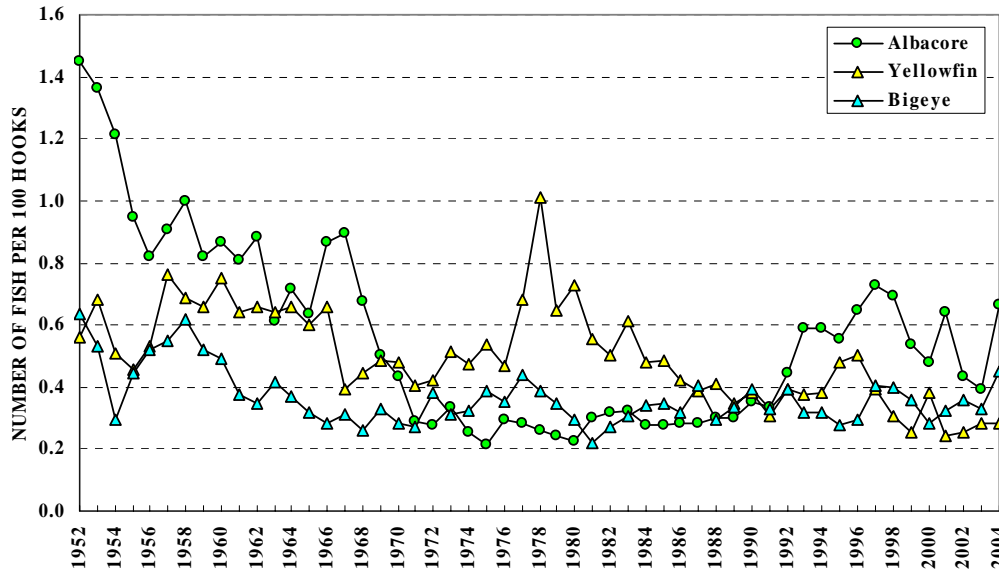


Figure 20. Japanese offshore and distant-water longliner catch rates

Figure 20. Taux de prise des palangriers du Japon

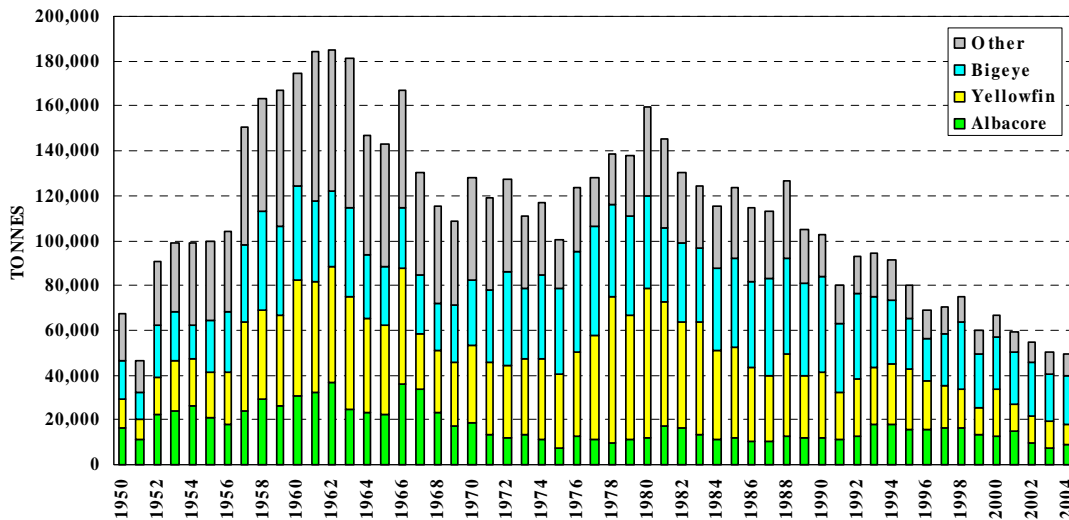


Figure 21. Catches by Japanese offshore and distant-water longliners

Figure 21. Prises des palangriers du Japon

**Table 7. Catch statistics for Japanese offshore and distant-water longliners.** Units: Days Covered = days on which hooks were set; Catch = tonnes; CPUE = number of fish per 100 hooks.

**Tableau 7. Statistiques de prise des palangriers du Japon.** Unités : Nbr. de Jours = nombre de jours de mise en place des hameçons; Prises = tonnes; PUE = nombre de poissons capturés pour 100 hameçons mouillés.

MONTH	VESSELS	HOOKS	ALBACORE		BIGEYE		YELLOWFIN		OTHERS	TOTAL	
			CATCH	CPUE	CATCH	CPUE	CATCH	CPUE	CATCH	CATCH	CPUE
MOIS	NBR. DE NAVIRES	NBR. DE HMEÇONS	GERMON		THON OBÈSE		THON JAUNE		AUTRES	TOTAL	
			PRISES	PUE	PRISES	PUE	PRISES	PUE	PRISES	PRISES	PUE
JAN/02	...	96,324	1,973	0.82	1,805	0.45	467	0.18	540	4,785	1.57
FEB	...	96,947	1,944	0.68	1,706	0.45	670	0.23	689	5,010	1.50
MAR	...	114,134	1,365	0.43	1,883	0.40	830	0.25	777	4,855	1.21
APR	...	148,967	1,981	0.54	1,860	0.31	865	0.21	1,023	5,729	1.18
MAY	...	185,907	1,696	0.43	1,638	0.22	589	0.12	1,205	5,127	0.88
JUN	...	169,632	1,237	0.34	1,575	0.24	914	0.20	1,119	4,846	0.89
JUL	...	142,507	740	0.32	1,423	0.28	933	0.25	1,048	4,143	0.98
AUG	...	120,986	536	0.26	1,483	0.33	1,209	0.37	393	3,620	1.02
SEP	...	100,768	224	0.14	1,832	0.47	1,358	0.45	475	3,889	1.16
OCT	...	84,107	356	0.23	1,734	0.49	879	0.36	551	3,520	1.19
NOV	...	87,445	936	0.54	1,662	0.52	752	0.28	406	3,756	1.43
DEC	...	92,403	996	0.63	1,686	0.47	893	0.33	511	4,086	1.57
TOT	...	1,440,126	13,983	0.44	20,288	0.36	10,360	0.25	8,737	53,368	1.16
AVG	...	120,011	1,165	0.45	1,691	0.39	863	0.27	728	4,447	1.21
JAN/03	...	109,899	942	0.50	2,033	0.50	887	0.27	920	4,781	1.45
FEB	...	109,370	646	0.34	2,319	0.52	1,056	0.34	852	4,874	1.37
MAR	...	125,562	636	0.22	2,226	0.44	1,096	0.37	983	4,941	1.16
APR	...	135,280	910	0.25	1,615	0.29	1,210	0.38	982	4,717	1.03
MAY	...	165,846	1,149	0.29	1,449	0.22	1,054	0.27	1,007	4,660	0.88
JUN	...	157,023	1,520	0.35	1,157	0.18	950	0.26	1,102	4,729	0.91
JUL	...	148,495	1,230	0.42	1,327	0.23	1,014	0.29	1,025	4,596	1.06
AUG	...	122,138	1,150	0.51	1,424	0.32	879	0.31	640	4,093	1.22
SEP	...	103,332	673	0.29	1,172	0.32	580	0.23	372	2,797	0.93
OCT	...	98,129	533	0.25	999	0.32	431	0.20	756	2,719	0.91
NOV	...	90,226	1,023	0.58	1,134	0.37	408	0.20	676	3,242	1.27
DEC	...	84,270	1,766	0.96	1,216	0.44	472	0.22	622	4,076	1.76
TOT	...	1,449,570	12,177	0.39	18,070	0.33	10,037	0.28	9,939	50,224	1.13
AVG	...	120,797	1,015	0.41	1,506	0.35	836	0.28	828	4,185	1.16
JAN/04	...	161,782	2,059	0.51	2,493	0.50	1,114	0.29	1,526	7,192	1.50
FEB	...	155,620	584	0.28	3,183	0.51	1,073	0.25	1,158	5,999	1.21
MAR	...	136,368	444	0.29	1,964	0.40	1,325	0.30	1,282	5,015	1.16
APR	...	128,185	1,956	0.63	1,508	0.36	735	0.20	996	5,195	1.32
MAY	...	126,227	2,302	0.75	1,436	0.29	429	0.11	731	4,899	1.24
JUN	...	98,061	2,126	0.92	1,637	0.43	662	0.22	814	5,238	1.72
JUL	...	83,976	1,799	1.16	1,031	0.45	718	0.36	727	4,274	2.12
AUG	...	63,117	1,123	1.11	1,205	0.54	1,289	0.66	198	3,815	2.39
SEP	...	51,351	778	0.84	855	0.59	691	0.50	206	2,530	2.02
OCT	...	42,892	568	0.78	1,004	0.58	436	0.37	154	2,162	1.83
NOV	...	27,307	706	0.88	778	0.72	159	0.20	198	1,840	1.92
DEC	...	11,749	578	2.00	205	0.46	43	0.11	55	881	2.63
TOT	...	1,086,634	15,021	0.66	17,299	0.45	8,674	0.28	8,046	49,040	1.55
AVG	...	90,553	1,252	0.85	1,442	0.49	723	0.30	670	4,087	1.76

**LONGLINE: NEW CALEDONIA**

The statistics in Table 8 were determined from logsheet data held at SPC on 31 December 2005. Coverage rates are 69 per cent for 2003 and 94 per cent for 2003; the statistics in Table 8 have not been raised to represent complete coverage. Figure 22 presents catch rates for albacore, bigeye and yellowfin. Figure 23 presents estimates of annual catches.

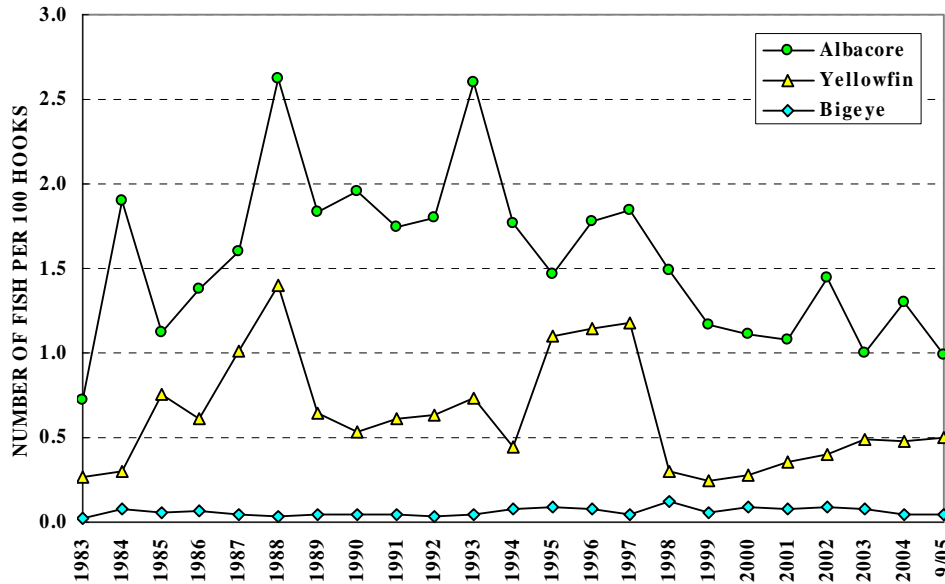


Figure 22. New Caledonian longliner catch rates

Figure 22. Taux de prise des palangriers de la Nouvelle-Calédonie

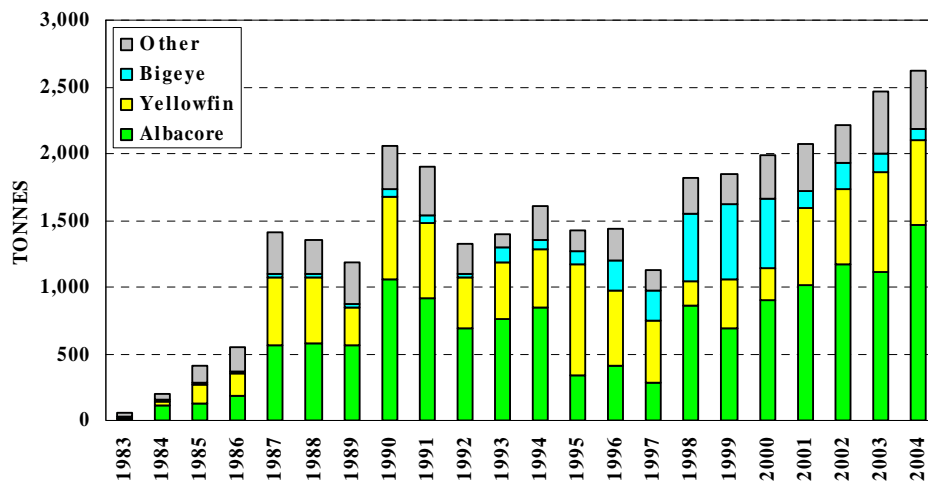


Figure 23. Catches by New Caledonian longliners

Figure 23. Prises des palangriers de Nouvelle-Calédonie

**Table 8. Catch statistics for New Caledonian longliners.** Units: Days Covered = days on which hooks were set; Catch = tonnes; CPUE = number of fish per 100 hooks.

**Tableau 8. Statistiques de prise des palangriers de Nouvelle-Calédonie.** Unités : Nbr. de Jours = nombre de jours de mise en place des hameçons; Prises = tonnes; PUE = nombre de poissons capturés pour 100 hameçons mouillés.

MONTH	VESSELS COVERED	DAYS COVERED	ALBACORE		BIGEYE		YELLOWFIN		OTHERS	TOTAL	
			CATCH	CPUE	CATCH	CPUE	CATCH	CPUE		CATCH	CPUE
MOIS	NBR. DE NAVIRES	NBR. DE JOURS	GERMON		THON OBÈSE		THON JAUNE		AUTRES	TOTAL	
			PRISES	PUE	PRISES	PUE	PRISES	PUE		PRISES	PUE
JAN/03	15	153	65	1.32	10	0.11	27	0.43	19	122	2.18
FEB	17	172	72	1.29	6	0.06	29	0.38	22	130	2.01
MAR	15	182	32	0.51	13	0.11	50	0.61	28	123	1.52
APR	16	226	41	0.52	19	0.15	62	0.65	29	151	1.61
MAY	16	209	39	0.57	17	0.13	62	0.71	26	144	1.69
JUN	16	222	63	0.84	12	0.09	55	0.61	30	160	1.83
JUL	15	155	50	0.95	5	0.06	37	0.56	22	115	1.87
AUG	14	190	80	1.31	4	0.03	40	0.50	24	148	2.08
SEP	12	165	55	0.98	2	0.02	24	0.33	25	106	1.68
OCT	20	220	77	1.12	4	0.03	41	0.46	29	151	1.90
NOV	23	275	102	1.15	8	0.05	33	0.28	44	186	1.81
DEC	19	200	98	1.69	6	0.05	27	0.33	27	158	2.47
TOT	25	2,369	774	1.00	107	0.08	488	0.49	324	1,694	1.87
AVG	17	197	64	1.02	9	0.07	41	0.49	27	141	1.89
JAN/04	23	275	145	1.67	8	0.05	53	0.49	43	249	2.65
FEB	23	279	111	1.27	8	0.04	66	0.58	31	216	2.14
MAR	24	251	41	0.53	7	0.05	37	0.37	24	109	1.16
APR	22	306	66	0.68	18	0.09	46	0.38	28	158	1.33
MAY	22	285	42	0.48	11	0.06	46	0.43	39	137	1.23
JUN	24	263	132	1.55	13	0.09	38	0.36	36	220	2.23
JUL	24	310	171	1.68	8	0.05	58	0.48	29	266	2.38
AUG	21	318	186	1.96	6	0.03	98	0.81	28	318	2.97
SEP	23	260	81	1.08	5	0.03	31	0.28	29	146	1.62
OCT	22	299	108	1.15	3	0.01	61	0.50	35	207	1.88
NOV	21	252	117	1.47	4	0.03	53	0.51	43	217	2.33
DEC	18	221	146	2.22	2	0.01	40	0.46	41	229	3.07
TOT	27	3,319	1,346	1.30	93	0.05	628	0.48	405	2,471	2.07
AVG	22	277	112	1.31	8	0.05	52	0.47	34	206	2.08
JAN/05	20	251	76	0.95	5	0.04	52	0.44	31	164	1.75
FEB	23	265	76	0.84	6	0.04	65	0.51	28	175	1.65
MAR	21	225	27	0.35	8	0.06	87	0.80	17	139	1.39
APR	7	30	12	1.08	3	0.16	25	1.64	3	43	3.05
MAY	5	37	19	1.64	1	0.03	2	0.11	3	24	1.96
JUN	5	75	36	1.56	1	0.03	5	0.13	8	50	1.94
JUL	5	43	19	1.53	1	0.02	1	0.03	3	23	1.75
AUG	4	58	44	2.64	1	0.02	1	0.03	4	50	2.81
SEP	1	2	2	2.82	0	0.00	0	0.11	0	2	3.16
OCT	0	—	—	—	—	—	—	—	—	—	—
NOV	0	—	—	—	—	—	—	—	—	—	—
DEC	0	—	—	—	—	—	—	—	—	—	—
TOT	24	986	312	0.99	25	0.05	237	0.50	96	671	1.77
AVG	10	110	35	1.49	3	0.04	26	0.42	11	75	2.16

### LONGLINE: PAPUA NEW GUINEA

The statistics in Table 9, which cover Papua New Guinea longliners, were determined from logsheet data held at SPC on 31 December 2005. Coverage rates are 76 per cent for 2003 and 64 per cent for 2004; the statistics in Table 9 have not been raised to represent complete coverage. Figure 24 presents catch rates for albacore, bigeye and yellowfin. Figure 25 presents estimates of annual catches; estimates for 1998–2004 include shark longliners.

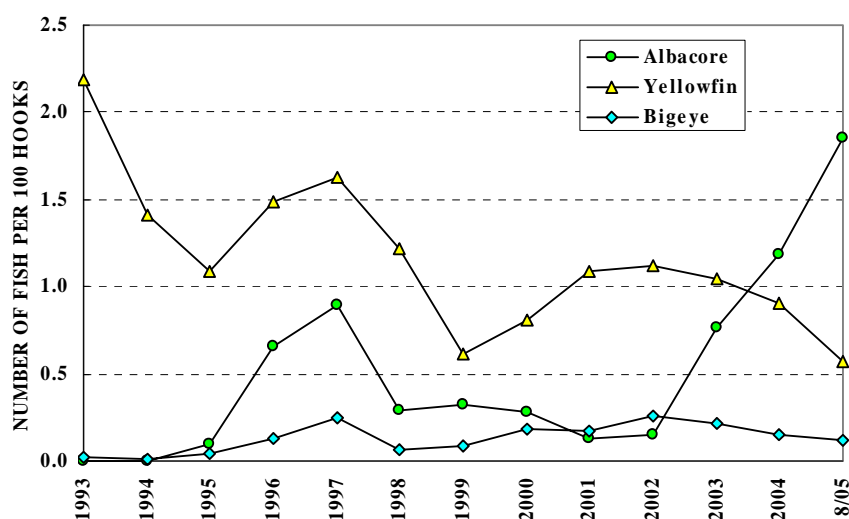


Figure 24. Papua New Guinea longliner catch rates

Figure 24. Taux de prise des palangriers de Papouasie-Nouvelle-Guinée

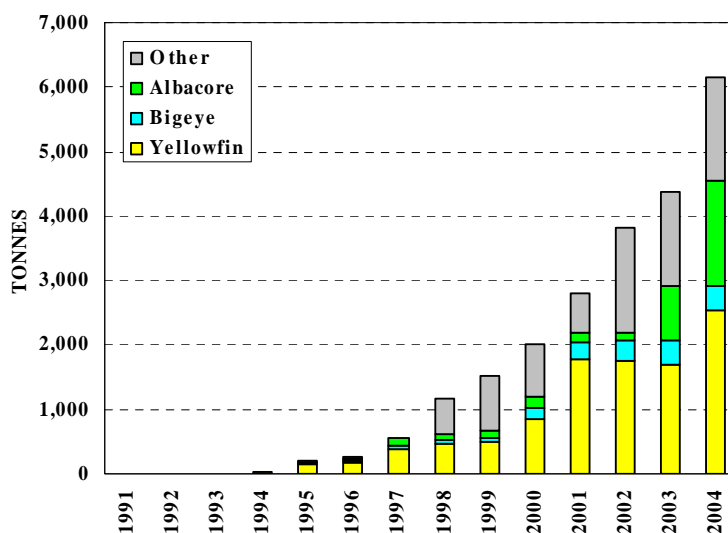


Figure 25. Catches by Papua New Guinea longliners

Figure 25. Prises des palangriers de Papouasie-Nouvelle-Guinée



**Table 9. Catch statistics for Papua New Guinea longliners.** Units: Days Covered = days on which hooks were set; Catch = tonnes; CPUE = number of fish per 100 hooks.

**Tableau 9. Statistiques de prise des palangriers de Papouasie-Nouvelle-Guinée.** Unités : Nbr. de Jours = nombre de jours de mise en place des hameçons; Prises = tonnes; PUE = nombre de poissons capturés pour 100 hameçons mouillés.

MONTH	VESSELS COVERED	DAYS COVERED	ALBACORE		BIGEYE		YELLOWFIN		OTHERS	TOTAL	
			CATCH	CPUE	CATCH	CPUE	CATCH	CPUE	CATCH	CATCH	CPUE
MOIS	NBR. DE NAVIRES	NBR. DE JOURS	GERMON		THON OBÈSE		THON JAUNE		AUTRES	TOTAL	
			PRISES	PUE	PRISES	PUE	PRISES	PUE	PRISES	PRISES	PUE
JAN/03	24	437	11	0.12	37	0.32	156	1.28	37	241	2.01
FEB	24	353	13	0.21	20	0.22	101	1.08	29	163	1.78
MAR	34	407	35	0.48	19	0.17	94	0.86	28	176	1.73
APR	31	518	104	1.16	34	0.23	141	1.06	43	321	2.74
MAY	34	527	114	1.18	30	0.20	180	1.25	33	356	2.81
JUN	32	565	143	1.34	40	0.26	173	1.06	31	388	2.84
JUL	32	516	93	0.89	35	0.22	165	1.16	26	318	2.44
AUG	30	561	67	0.65	38	0.25	148	0.95	28	281	2.05
SEP	30	536	48	0.52	35	0.23	142	0.94	34	258	1.89
OCT	32	502	42	0.43	26	0.17	170	1.17	22	259	1.90
NOV	32	554	123	1.05	43	0.22	164	0.98	28	359	2.39
DEC	27	477	65	0.62	32	0.18	113	0.69	24	235	1.59
TOT	42	5,953	857	0.76	390	0.22	1,747	1.04	360	3,354	2.21
AVG	30	496	71	0.72	32	0.22	146	1.04	30	280	2.18
JAN/04	24	449	11	0.11	28	0.15	135	0.75	27	200	1.14
FEB	18	203	21	0.48	19	0.21	63	0.78	7	110	1.53
MAR	12	168	47	1.22	10	0.14	51	0.82	8	116	2.25
APR	19	242	86	1.55	15	0.16	88	1.09	12	201	2.90
MAY	28	463	84	0.74	41	0.21	183	1.12	17	325	2.16
JUN	30	503	191	1.60	31	0.16	209	1.23	17	449	3.09
JUL	33	618	202	1.37	43	0.19	181	0.87	15	442	2.50
AUG	32	609	250	1.71	37	0.16	192	0.88	14	493	2.83
SEP	32	522	222	1.80	21	0.11	121	0.59	17	381	2.58
OCT	33	570	161	1.12	23	0.10	205	0.87	25	414	2.20
NOV	30	523	146	1.12	22	0.09	268	1.16	24	460	2.49
DEC	29	502	121	1.00	33	0.14	156	0.68	19	329	1.90
TOT	39	5,372	1,541	1.19	321	0.15	1,853	0.90	203	3,918	2.34
AVG	27	448	128	1.15	27	0.15	154	0.90	17	326	2.30
JAN/05	29	516	132	1.10	27	0.12	149	0.73	28	336	2.06
FEB	24	366	94	1.02	26	0.15	105	0.67	24	249	1.98
MAR	26	463	103	0.87	33	0.15	100	0.49	21	256	1.60
APR	28	453	204	1.84	24	0.12	83	0.45	19	330	2.51
MAY	24	421	285	2.71	20	0.11	112	0.63	14	431	3.51
JUN	19	217	142	2.91	7	0.08	53	0.57	6	208	3.62
JUL	18	288	232	3.51	10	0.07	57	0.41	6	305	4.03
AUG	10	109	66	2.50	3	0.06	23	0.41	3	94	3.00
SEP	0	—	—	—	—	—	—	—	—	—	—
OCT	0	—	—	—	—	—	—	—	—	—	—
NOV	0	—	—	—	—	—	—	—	—	—	—
DEC	0	—	—	—	—	—	—	—	—	—	—
TOT	34	2,833	1,257	1.85	150	0.12	682	0.57	119	2,210	2.62
AVG	22	354	157	2.06	19	0.11	85	0.55	15	276	2.79

### LONGLINE: SAMOA

The statistics in Table 10, which cover Samoan longliners, were determined from logsheet data held at SPC on 31 December 2005. Coverage rates are 48 per cent for 2003 and 61 per cent for 2004; the statistics in Table 10 have not been raised to represent complete coverage. Figure 26 presents catch rates for albacore, bigeye and yellowfin. Figure 27 presents estimates of annual catches.

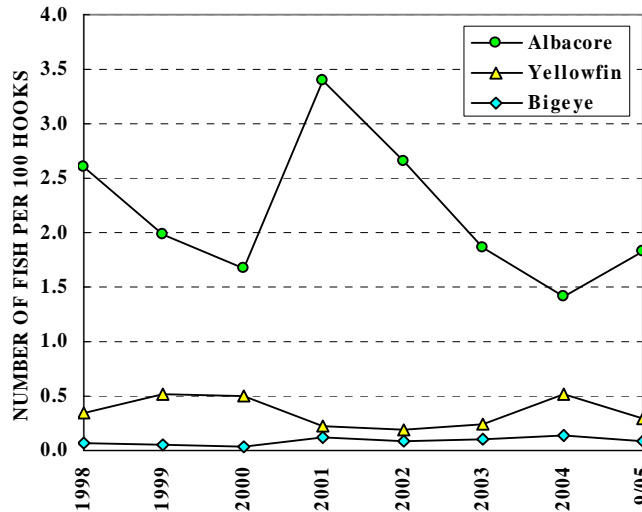


Figure 26. Samoan longliner catch rates

Figure 26. Taux de prise des palangriers de Samoa

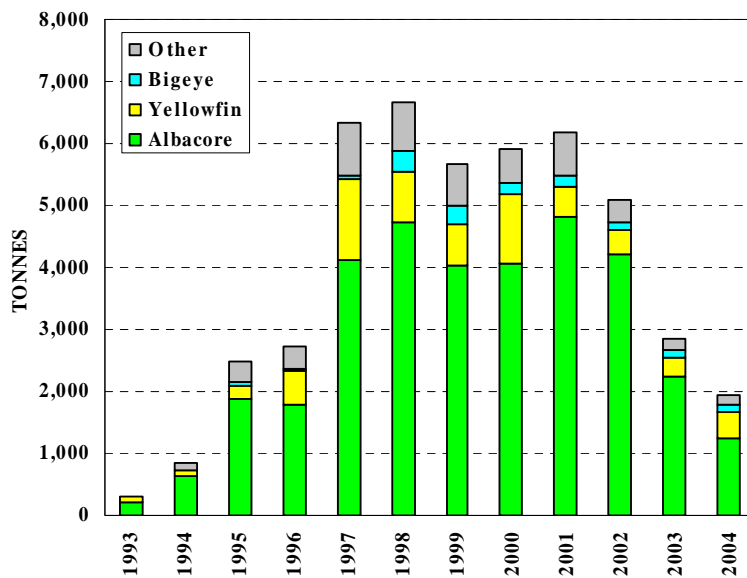


Figure 27. Catches by Samoan longliners

Figure 27. Prises des palangriers de Samoa

**Table 10. Catch statistics for Samoan longliners.** Units: Days Covered = days on which hooks were set; Catch = tonnes; CPUE = number of fish per 100 hooks.

**Tableau 10. Statistiques de prise des palangriers de Samoa.** Unités : Nbr. de Jours = nombre de jours de mise en place des hameçons; Prises = tonnes; PUE = nombre de poissons capturés pour 100 hameçons mouillés.

MONTH	VESSELS COVERED	DAYS COVERED	ALBACORE		BIGEYE		YELLOWFIN		OTHERS	TOTAL	
			CATCH	CPUE	CATCH	CPUE	CATCH	CPUE		CATCH	CPUE
MOIS	NBR. DE NAVIRES	NBR. DE JOURS	GERMON		THON OBÈSE		THON JAUNE		AUTRES	TOTAL	
			PRISES	PUE	PRISES	PUE	PRISES	PUE		PRISES	PUE
JAN/03	9	27	7	1.42	1	0.16	1	0.23	3	12	2.42
FEB	12	107	37	1.19	1	0.03	3	0.11	10	50	1.67
MAR	13	183	49	0.82	3	0.05	9	0.16	50	112	1.42
APR	13	149	55	1.36	3	0.08	12	0.32	10	80	2.17
MAY	17	147	80	2.04	6	0.15	20	0.54	19	126	3.19
JUN	21	169	91	2.25	5	0.12	15	0.38	20	131	3.20
JUL	30	194	78	2.06	5	0.13	10	0.29	30	123	3.15
AUG	28	235	85	1.66	5	0.10	9	0.19	38	137	2.47
SEP	34	276	125	2.39	6	0.12	11	0.22	59	201	3.37
OCT	26	234	108	2.35	4	0.10	6	0.14	29	147	2.96
NOV	33	262	98	2.46	4	0.10	5	0.14	24	131	3.11
DEC	28	190	82	2.37	4	0.10	6	0.18	32	123	3.17
TOT	57	2,173	894	1.87	47	0.10	108	0.24	325	1,373	2.68
AVG	22	181	74	1.86	4	0.10	9	0.24	27	114	2.69
JAN/04	22	158	30	0.88	4	0.11	13	0.33	22	69	1.76
FEB	11	117	22	0.83	5	0.18	7	0.24	11	45	1.50
MAR	16	144	50	1.37	12	0.32	12	0.28	21	95	2.45
APR	13	126	40	1.15	4	0.11	20	0.50	10	74	1.97
MAY	13	118	39	1.40	6	0.20	29	0.91	14	88	2.89
JUN	15	146	83	2.40	7	0.19	23	0.57	15	127	3.54
JUL	26	182	75	2.19	5	0.14	50	1.25	25	156	4.32
AUG	34	188	46	1.58	3	0.10	43	1.27	24	116	3.74
SEP	26	183	43	1.25	5	0.14	24	0.61	39	111	2.57
OCT	28	193	54	1.32	4	0.10	10	0.22	27	95	2.00
NOV	23	221	61	1.29	4	0.07	7	0.14	28	99	1.92
DEC	28	217	55	1.24	5	0.11	10	0.19	38	109	2.10
TOT	54	1,993	599	1.41	64	0.14	249	0.51	272	1,184	2.52
AVG	21	166	50	1.41	5	0.15	21	0.54	23	99	2.56
JAN/05	16	113	29	1.24	4	0.12	3	0.10	19	55	1.98
FEB	12	59	17	1.43	1	0.10	3	0.16	7	28	2.10
MAR	11	123	26	0.99	1	0.04	4	0.11	17	49	1.50
APR	9	82	24	1.21	1	0.06	4	0.13	10	39	1.70
MAY	10	49	16	1.85	1	0.11	4	0.29	2	23	2.52
JUN	17	116	96	3.72	3	0.10	33	0.89	17	149	5.19
JUL	8	31	13	1.77	0	0.03	2	0.21	9	24	2.54
AUG	8	55	31	2.00	1	0.04	8	0.36	4	44	2.57
SEP	3	3	0	2.29	0	0.57	0	0.10	1	1	4.95
OCT	0	—	—	—	—	—	—	—	—	—	—
NOV	0	—	—	—	—	—	—	—	—	—	—
DEC	0	—	—	—	—	—	—	—	—	—	—
TOT	34	631	252	1.82	13	0.08	61	0.30	86	413	2.59
AVG	10	70	28	1.83	1	0.13	7	0.26	10	46	2.78

**LONGLINE: CHINESE TAIPEI OFFSHORE FLEET, EAST OF 130°E**

The statistics in Table 11, which cover the Chinese Taipei offshore longliners fishing in the Western and Central Pacific Ocean (Figure 1), east of 130°E, were determined from logsheet data held at SPC on 31 December 2005. The coverage rate is 41 per cent for 2003 and 35 per cent for 2004; the statistics in Table 11 have not been raised to represent complete coverage. Figure 28 presents catch rates for albacore, bigeye and yellowfin. The catch rates were determined from logsheet data held at SPC. Figure 29 presents estimates of annual catches by offshore vessels east of 130°E; catches of ‘other’ species are not included for most years.

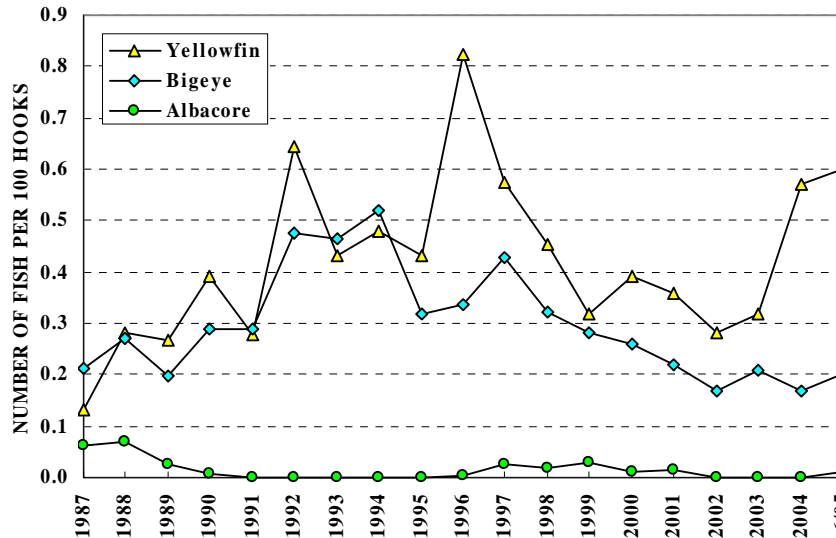


Figure 28. Chinese Taipei offshore longliner catch rates

Figure 28. Taux de prise des palangriers de Taïwan pêchant au large à l'est de 130°E

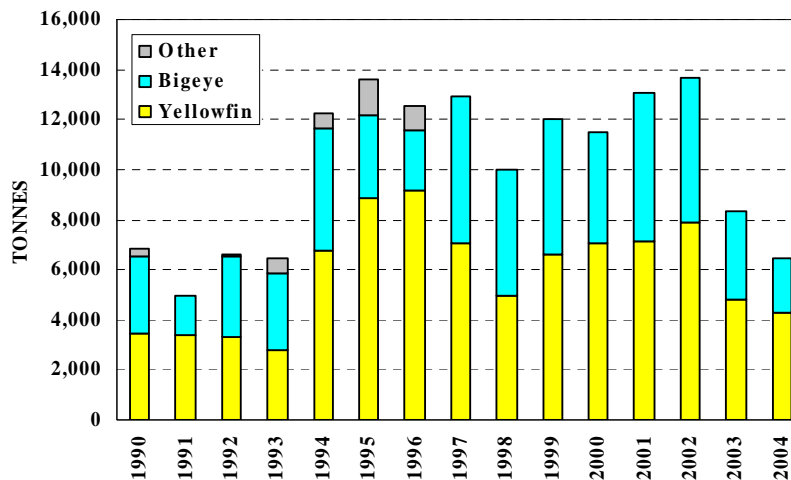


Figure 29. Catches by Chinese Taipei offshore longliners, east of 130°E

Figure 29. Prises des palangriers de Taïwan pêchant au large, à l'est de 130°E

**Table 11. Catch statistics for Chinese Taipei offshore longliners, east of 130°E.** Units: Days Covered = days on which hooks were set; Catch = tonnes; CPUE = number of fish per 100 hooks.

**Tableau 11. Statistiques de prise des palangriers de Taïwan pêchant au large, à l'est de 130°E.** Unités : Nbr. de Jours = nombre de jours de mise en place des hameçons; Prises = tonnes; PUE = nombre de poissons capturés pour 100 hameçons mouillés.

MONTH	VESSELS COVERED	DAYS COVERED	ALBACORE		BIGEYE		YELLOWFIN		OTHERS	TOTAL	
			CATCH	CPUE	CATCH	CPUE	CATCH	CPUE		CATCH	CPUE
MOIS	NBR. DE NAVIRES	NBR. DE JOURS	GERMON		THON OBÈSE		THON JAUNE		AUTRES	TOTAL	
			PRISES	PUE	PRISES	PUE	PRISES	PUE		PRISES	PUE
JAN/03	50	691	0	0.00	88	0.26	161	0.60	47	296	1.03
FEB	36	393	0	0.00	29	0.14	37	0.23	36	102	0.58
MAR	40	514	2	0.01	46	0.17	57	0.29	47	152	0.69
APR	57	711	0	0.00	88	0.23	113	0.39	101	301	0.97
MAY	57	756	0	0.00	69	0.17	125	0.43	131	324	1.06
JUN	61	857	0	0.00	124	0.26	121	0.37	147	393	1.06
JUL	91	1,328	1	0.00	181	0.22	158	0.27	157	498	0.73
AUG	101	1,361	2	0.00	182	0.22	148	0.25	134	466	0.68
SEP	69	845	2	0.01	131	0.26	81	0.23	51	266	0.64
OCT	41	496	0	0.00	61	0.21	58	0.27	27	147	0.59
NOV	55	730	0	0.00	79	0.16	97	0.27	39	216	0.53
DEC	68	871	1	0.00	71	0.14	117	0.31	44	233	0.58
TOT	146	9,553	9	0.00	1,148	0.21	1,274	0.32	962	3,394	0.76
AVG	61	796	1	0.00	96	0.20	106	0.33	80	283	0.76
JAN/04	53	651	0	0.00	56	0.16	72	0.26	30	159	0.55
FEB	43	492	0	0.00	32	0.12	79	0.39	18	129	0.58
MAR	55	703	1	0.01	101	0.26	84	0.29	37	222	0.70
APR	48	472	0	0.00	71	0.27	67	0.37	25	164	0.78
MAY	29	387	0	0.00	34	0.15	116	0.72	7	157	0.91
JUN	23	297	0	0.00	13	0.07	105	0.94	4	122	1.04
JUL	35	428	0	0.00	33	0.12	119	0.84	11	163	1.01
AUG	45	497	0	0.00	57	0.18	82	0.43	12	151	0.65
SEP	43	646	0	0.00	63	0.15	180	0.73	9	252	0.90
OCT	48	553	3	0.01	51	0.15	128	0.58	8	191	0.76
NOV	39	466	2	0.01	52	0.17	131	0.66	4	188	0.85
DEC	50	727	4	0.01	82	0.15	254	0.81	5	345	0.98
TOT	109	6,319	10	0.00	645	0.17	1,418	0.57	171	2,243	0.80
AVG	43	527	1	0.00	54	0.16	118	0.59	14	187	0.81
JAN/05	44	516	4	0.03	49	0.15	148	0.71	3	204	0.89
FEB	27	224	0	0.00	24	0.19	39	0.46	3	66	0.66
MAR	20	208	0	0.00	37	0.29	49	0.54	0	87	0.83
APR	1	9	0	0.00	3	0.56	1	0.35	1	5	1.03
MAY	1	22	0	0.00	5	0.45	2	0.25	3	11	0.96
JUN	1	18	0	0.00	4	0.43	2	0.29	3	9	0.95
JUL	0	—	—	—	—	—	—	—	—	—	—
AUG	0	—	—	—	—	—	—	—	—	—	—
SEP	0	—	—	—	—	—	—	—	—	—	—
OCT	0	—	—	—	—	—	—	—	—	—	—
NOV	0	—	—	—	—	—	—	—	—	—	—
DEC	0	—	—	—	—	—	—	—	—	—	—
TOT	49	997	4	0.01	124	0.20	241	0.60	13	381	0.84
AVG	16	166	1	0.01	21	0.35	40	0.43	2	64	0.89

**LONGLINE: CHINESE TAIPEI DISTANT-WATER FLEET**

The statistics in Table 12 and Figure 30, which cover distant-water Chinese Taipei longliners fishing in the Western and Central Pacific Ocean (Figure 1), were determined from data provided by the Overseas Fisheries Development Council, grouped by 5° longitude, 5° latitude and month. Figure 31 presents estimates of annual catches by distant-water Chinese Taipei longliners in the Western and Central Pacific Ocean.

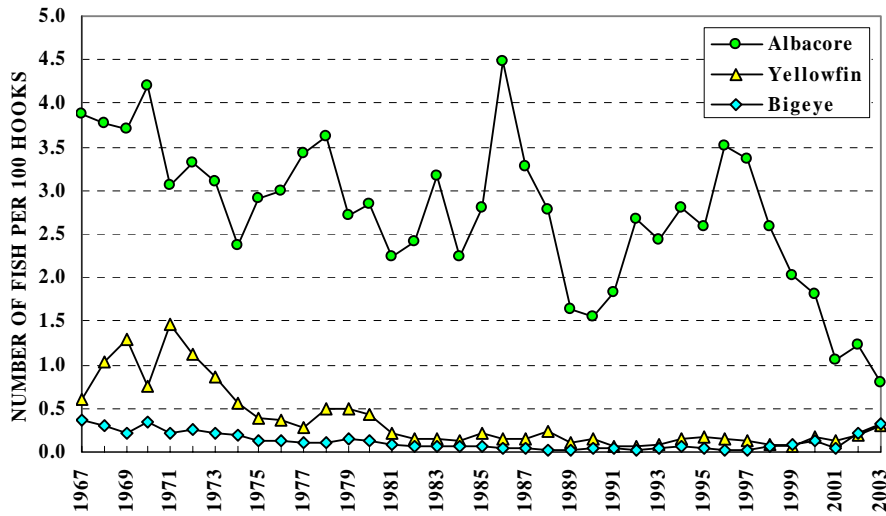


Figure 30. Chinese Taipei distant-water longliner catch rates

Figure 30. Taux de prise des palangriers hauturiers de Taïwan

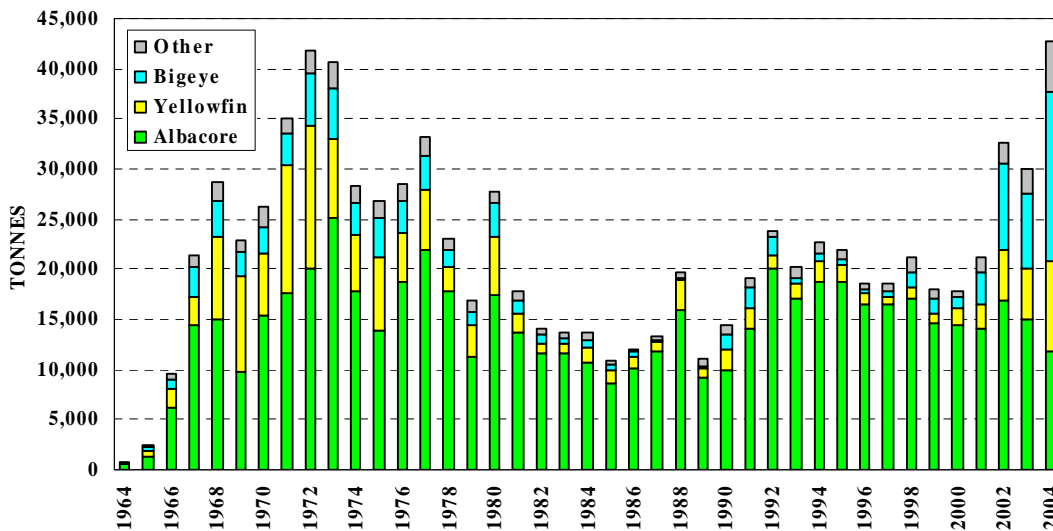


Figure 31. Catches by Chinese Taipei distant-water longliners

Figure 31. Prises des palangriers hauturiers de Taïwan

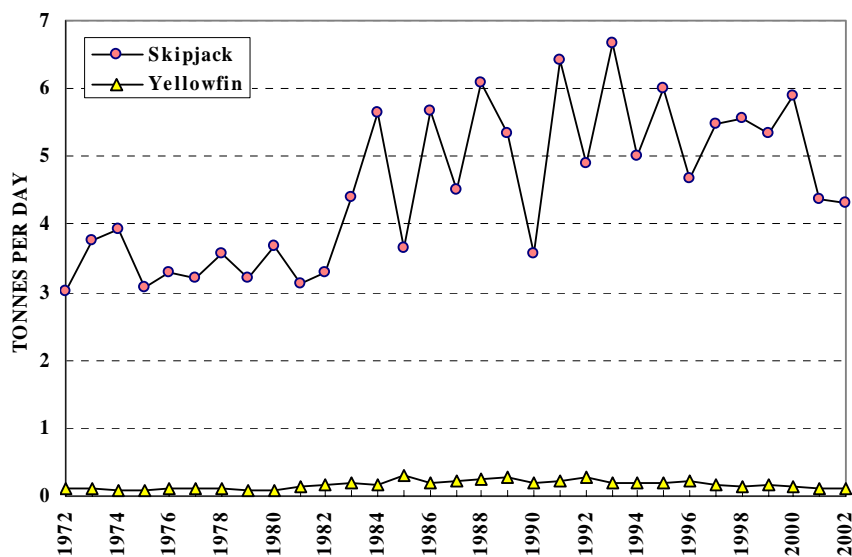
**Table 12. Catch statistics for Chinese Taipei distant-water longliners.** Units: Days Covered = days on which hooks were set; Catch = tonnes; CPUE = number of fish per 100 hooks.

**Tableau 12. Statistiques de prise des palangriers hauturiers de Taïwan.** Unités : Nbr. de Jours = nombre de jours de mise en place des hameçons; Prises = tonnes; PUE = nombre de poissons capturés pour 100 hameçons mouillés.

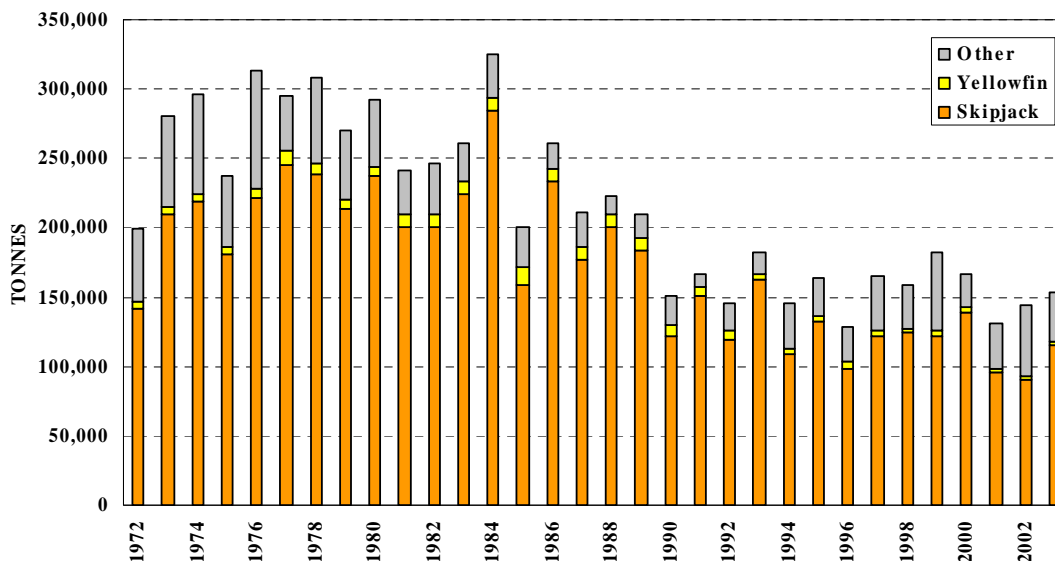
MONTH	VESSELS	HOOKS	ALBACORE		BIGEYE		YELLOWFIN		OTHERS	TOTAL	
			CATCH	CPUE	CATCH	CPUE	CATCH	CPUE	CATCH	CATCH	CPUE
MOIS	NBR. DE NAVIRES	NBR. DE HMEÇONS	GERMON		THON OBÈSE		THON JAUNE		AUTRES	TOTAL	
			PRISES	PUE	PRISES	PUE	PRISES	PUE	PRISES	PRISES	PUE
JAN/01	...	69,125	1,414	1.17	58	0.03	164	0.08	229	1,866	1.58
FEB	...	67,997	1,223	1.07	157	0.06	199	0.09	355	1,934	1.49
MAR	...	67,268	818	0.70	139	0.06	446	0.20	555	1,958	1.32
APR	...	47,283	621	0.75	245	0.12	243	0.15	602	1,711	1.53
MAY	...	49,953	837	0.94	251	0.11	203	0.12	587	1,879	1.47
JUN	...	62,073	1,369	1.34	190	0.08	158	0.08	691	2,408	1.94
JUL	...	55,970	1,583	1.80	91	0.04	161	0.10	730	2,565	2.44
AUG	...	54,765	1,813	2.17	25	0.01	185	0.11	530	2,553	2.74
SEP	...	47,141	426	0.66	18	0.01	256	0.17	671	1,372	1.46
OCT	...	36,645	208	0.30	18	0.01	219	0.19	607	1,052	1.26
NOV	...	30,221	70	0.09	25	0.02	130	0.13	374	598	0.81
DEC	...	16,949	98	0.32	4	0.01	36	0.06	191	328	1.03
TOT	...	605,389	10,481	1.05	1,220	0.05	2,401	0.12	6,122	20,224	1.67
AVG	...	50,449	873	0.94	102	0.05	200	0.12	510	1,685	1.59
JAN/02	...	53,480	631	0.86	148	0.07	189	0.12	268	1,236	1.19
FEB	...	55,446	726	0.87	86	0.05	310	0.16	243	1,366	1.26
MAR	...	39,666	290	0.47	253	0.15	303	0.21	245	1,091	1.06
APR	...	49,950	606	0.88	553	0.26	332	0.19	364	1,856	1.54
MAY	...	77,284	1,558	1.36	384	0.12	332	0.12	469	2,744	1.79
JUN	...	120,257	3,151	1.84	518	0.11	507	0.14	605	4,780	2.27
JUL	...	117,108	2,501	1.64	1,191	0.25	696	0.22	760	5,148	2.31
AUG	...	89,835	1,823	1.45	914	0.26	525	0.21	642	3,904	2.16
SEP	...	45,049	462	0.75	690	0.39	332	0.30	574	2,058	1.85
OCT	...	45,998	666	0.86	652	0.36	368	0.31	565	2,250	1.91
NOV	...	35,313	316	0.57	621	0.46	393	0.38	410	1,739	1.81
DEC	...	10,485	118	0.63	164	0.46	42	0.12	108	433	1.44
TOT	...	739,870	12,850	1.22	6,174	0.21	4,327	0.20	5,254	28,604	1.86
AVG	...	61,656	1,071	1.01	514	0.24	361	0.21	438	2,384	1.72
JAN/03	...	63,359	790	0.71	945	0.37	545	0.26	1,150	3,430	1.66
FEB	...	81,320	374	0.29	1,044	0.43	542	0.24	590	2,549	1.12
MAR	...	73,513	675	0.57	1,092	0.48	369	0.18	595	2,731	1.41
APR	...	70,001	494	0.48	1,202	0.47	868	0.27	601	3,165	1.40
MAY	...	54,021	717	0.82	750	0.29	899	0.40	814	3,179	1.78
JUN	...	62,973	779	0.86	697	0.26	935	0.39	681	3,093	1.74
JUL	...	59,257	1,016	1.23	494	0.18	792	0.39	591	2,893	2.09
AUG	...	64,827	1,391	1.93	336	0.15	838	0.38	337	2,902	2.61
SEP	...	29,731	276	0.70	219	0.22	140	0.15	174	810	1.14
OCT	...	15,273	51	0.25	148	0.22	127	0.32	67	394	0.89
NOV	...	1,550	0	0.00	32	0.56	3	0.06	2	37	0.66
DEC	...	10,485	118	0.63	164	0.46	42	0.12	108	433	1.44
TOT	...	586,310	6,683	0.81	7,123	0.33	6,101	0.30	5,709	25,617	1.64
AVG	...	48,859	557	0.71	594	0.34	508	0.26	476	2,135	1.50

**POLE-AND-LINE: JAPAN**

The statistics in Table 13 and Figure 32 cover Japanese offshore and distant-water pole-and-line vessels in the Western and Central Pacific Ocean (Figure 1). All statistics were determined from data provided by the Fisheries Agency of Japan, grouped by 1° longitude, 1° latitude and month. Figure 33 presents estimates of annual catches.



**Figure 32. Japanese pole-and-line catch rates**  
**Figure 32. Taux de prise des canneurs du Japon**



**Figure 33. Catches by Japanese offshore and distant-water pole-and-line vessels**  
**Figure 33. Prises des canneurs du Japon**



**Table 13. Catch statistics for Japanese pole-and-line vessels in the Western and Central Pacific Ocean.** Units: Days = days fished or searched; Catch = tonnes; CPUE = tonnes per day fished or searched.

**Tableau 13. Statistiques de prise des canneurs du Japon dans le Pacifique occidental et central.** Unités : Nbr de Jours = nombre de jours de pêche ou de recherche du poisson; Prises = tonnes; PUE = nombre de tonnes par jour de pêche ou de recherche du poisson.

MONTH	VESSELS	DAYS	SKIPJACK			YELLOWFIN			OTHERS	TOTAL	
			CATCH	CPUE	%	CATCH	CPUE	%	CATCH	CATCH	CPUE
MOIS	NBR. DE NAVIRES	NBR. DE JOURS	BONITE			THON JAUNE			AUTRES	TOTAL	
			PRISES	PUE	%	PRISES	PUE	%	PRISES	PRISES	PUE
JAN/01	...	367	1,278	3.48	85	224	0.61	15	3	1,505	4.10
FEB	...	1,271	5,644	4.44	92	454	0.36	7	31	6,129	4.82
MAR	...	1,893	8,278	4.37	94	493	0.26	6	53	8,824	4.66
APR	...	2,267	10,905	4.81	97	331	0.15	3	41	11,276	4.97
MAY	...	2,513	11,690	4.65	85	284	0.11	2	1,758	13,733	5.46
JUN	...	2,652	11,386	4.29	59	157	0.06	1	7,756	19,299	7.28
JUL	...	2,405	7,282	3.03	43	208	0.09	1	9,380	16,870	7.01
AUG	...	1,828	9,403	5.14	56	110	0.06	1	7,385	16,897	9.24
SEP	...	2,188	8,803	4.02	73	70	0.03	1	3,258	12,130	5.54
OCT	...	2,057	7,921	3.85	91	108	0.05	1	711	8,739	4.25
NOV	...	1,686	7,474	4.43	99	97	0.06	1	10	7,581	4.50
DEC	...	916	6,076	6.63	98	78	0.08	1	31	6,185	6.75
TOT	...	22,043	96,139	4.36	74	2,612	0.12	2	30,416	129,167	5.86
AVG	...	1,837	8,012	4.43	81	218	0.16	3	2,535	10,764	5.72
JAN/02	...	474	2,973	6.27	96	104	0.22	3	12	3,089	6.52
FEB	...	1,332	7,194	5.40	96	316	0.24	4	22	7,533	5.66
MAR	...	1,971	8,851	4.49	96	283	0.14	3	89	9,223	4.68
APR	...	2,284	12,632	5.53	92	377	0.17	3	701	13,711	6.00
MAY	...	2,390	8,392	3.51	69	410	0.17	3	3,279	12,081	5.05
JUN	...	2,291	5,277	2.30	29	283	0.12	2	12,679	18,238	7.96
JUL	...	2,227	8,325	3.74	39	208	0.09	1	12,624	21,157	9.50
AUG	...	1,978	4,860	2.46	29	103	0.05	1	11,775	16,737	8.46
SEP	...	2,001	10,874	5.43	59	75	0.04	0	7,636	18,585	9.29
OCT	...	2,073	7,530	3.63	94	155	0.07	2	350	8,035	3.88
NOV	...	1,399	8,221	5.88	90	135	0.10	1	792	9,148	6.54
DEC	...	535	5,489	10.26	99	52	0.10	1	10	5,552	10.38
TOT	...	20,955	90,618	4.32	63	2,500	0.12	2	49,971	143,089	6.83
AVG	...	1,746	7,551	4.91	74	208	0.13	2	4,164	11,924	6.99
JAN/03	...	474	2,973	6.27	96	104	0.22	3	12	3,089	6.52
FEB	...	1,332	7,194	5.40	96	316	0.24	4	22	7,533	5.66
MAR	...	1,971	8,851	4.49	96	283	0.14	3	89	9,223	4.68
APR	...	2,284	12,632	5.53	92	377	0.17	3	701	13,711	6.00
MAY	...	2,390	8,392	3.51	69	410	0.17	3	3,279	12,081	5.05
JUN	...	2,291	5,277	2.30	29	283	0.12	2	12,679	18,238	7.96
JUL	...	2,227	8,325	3.74	39	208	0.09	1	12,624	21,157	9.50
AUG	...	1,978	4,860	2.46	29	103	0.05	1	11,775	16,737	8.46
SEP	...	2,001	10,874	5.43	59	75	0.04	0	7,636	18,585	9.29
OCT	...	2,073	7,530	3.63	94	155	0.07	2	350	8,035	3.88
NOV	...	1,399	8,221	5.88	90	135	0.10	1	792	9,148	6.54
DEC	...	535	5,489	10.26	99	52	0.10	1	10	5,552	10.38
TOT	...	20,955	90,618	4.32	63	2,500	0.12	2	49,971	143,089	6.83
AVG	...	1,746	7,551	4.91	74	208	0.13	2	4,164	11,924	6.99

**POLE AND LINE: SOLOMON ISLANDS**

The statistics in Table 14, which cover the Solomon Islands pole-and-line fleet, including chartered Okinawan vessels, were determined from logsheet data held at SPC on 31 December 2005. Coverage rates are 92 per cent for 2003 and 14 per cent for 2004; the statistics in Table 14 have not been raised to represent complete coverage. Figure 34 presents catch rates for skipjack and yellowfin; the estimates of catch rates for 1971–1995 were provided by the Solomon Islands Fisheries Division, while those for 1996–2003 were determined from logsheet data held at SPC. Figure 35 presents estimates of annual catches.

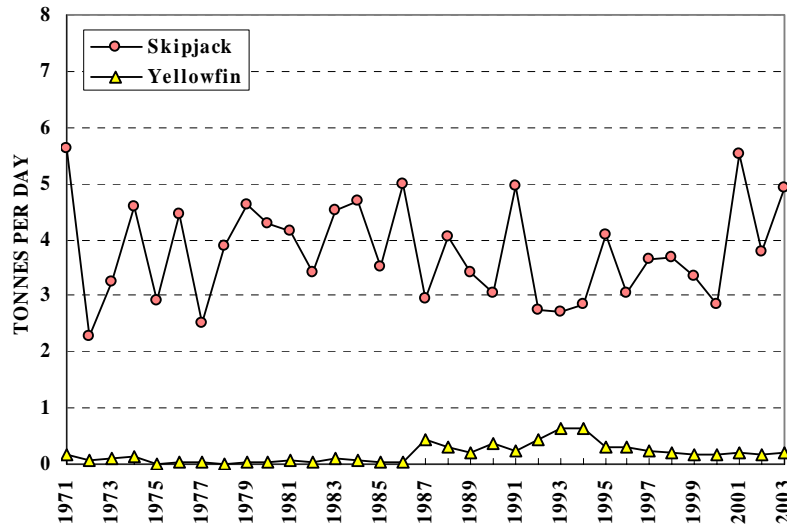


Figure 34. Solomon Islands pole-and-line catch rates

Figure 34. Taux de prise des canneurs des Îles Salomon

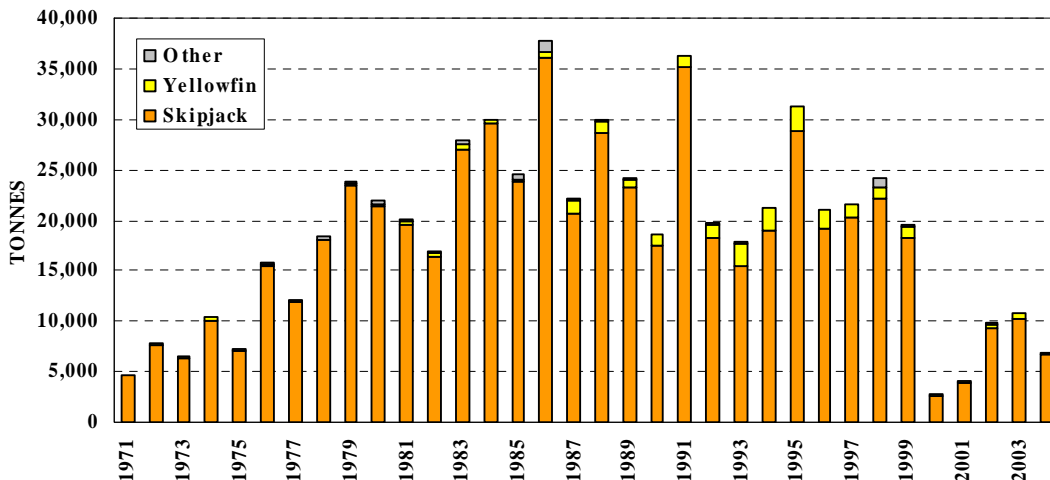


Figure 35. Catches by Solomon Islands pole-and-line vessels

Figure 35. Prises des canneurs des Îles Salomon

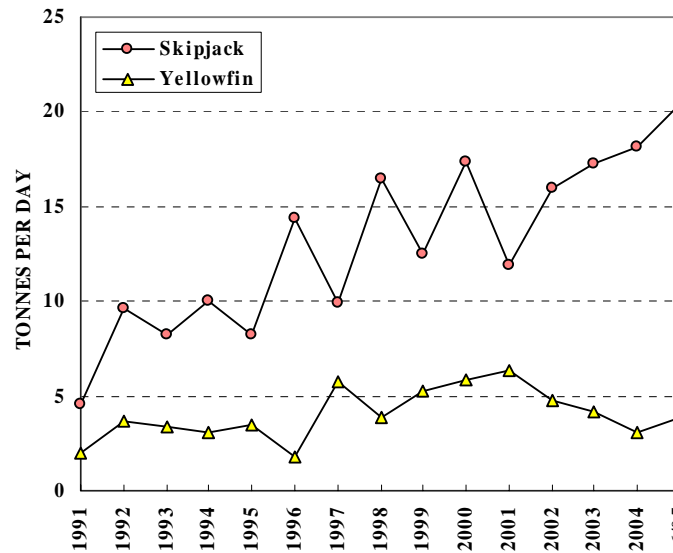
**Table 14. Catch statistics for Solomon Islands pole-and-line vessels.** Units: Days Covered = days fished or searched; Catch = tonnes; CPUE = tonnes per day fished or searched.

**Tableau 14. Statistiques de prise des canneurs des Îles Salomon.** Unités : Nbr. de Jours = nombre de jours de pêche ou de recherche du poisson; Prises = tonnes; PUE = nombre de tonnes par jour de pêche ou de recherche du poisson.

MONTH	VESSELS COVERED	DAYS COVERED	SKIPJACK			YELLOWFIN			OTHERS	TOTAL	
			CATCH	CPUE	%	CATCH	CPUE	%		CATCH	CPUE
MOIS	NBR. DE NAVIRES	NBR. DE JOURS	BONITE			THON JAUNE			AUTRES	TOTAL	
			PRISES	PUE	%	PRISES	PUE	%		PRISES	PUE
JAN/02	8	149	266	1.78	86	33	0.22	11	11	310	2.08
FEB	10	186	332	1.78	81	56	0.30	14	23	412	2.21
MAR	10	193	1,285	6.66	95	42	0.22	3	27	1,355	7.02
APR	11	217	653	3.01	89	46	0.21	6	31	731	3.37
MAY	11	240	1,036	4.32	96	32	0.13	3	12	1,080	4.50
JUN	11	220	748	3.40	96	19	0.09	2	11	778	3.53
JUL	11	209	573	2.74	97	10	0.05	2	5	589	2.82
AUG	11	230	985	4.28	99	8	0.04	1	3	996	4.33
SEP	11	237	1,003	4.23	97	23	0.10	2	7	1,032	4.36
OCT	11	214	823	3.85	95	37	0.17	4	4	864	4.04
NOV	9	178	789	4.44	94	40	0.23	5	13	842	4.73
DEC	9	134	639	4.77	92	57	0.42	8	2	697	5.21
TOT	12	2,407	9,132	3.79	94	405	0.17	4	148	9,685	4.02
AVG	10	201	761	3.77	94	34	0.18	4	12	807	4.02
JAN/03	9	174	1,394	8.01	95	71	0.41	5	0	1,465	8.42
FEB	9	169	1,274	7.54	96	56	0.33	4	0	1,330	7.87
MAR	7	152	850	5.59	94	53	0.35	6	0	903	5.94
APR	9	163	815	5.00	97	22	0.13	3	2	839	5.15
MAY	9	191	1,117	5.85	97	27	0.14	2	5	1,149	6.02
JUN	8	151	994	6.59	97	28	0.18	3	2	1,024	6.78
JUL	9	155	737	4.75	96	30	0.20	4	2	769	4.96
AUG	9	167	571	3.42	95	28	0.17	5	1	601	3.60
SEP	8	176	619	3.52	94	42	0.24	6	0	661	3.76
OCT	10	173	415	2.40	94	26	0.15	6	0	441	2.55
NOV	9	173	590	3.41	98	12	0.07	2	0	602	3.48
DEC	6	89	112	1.26	91	11	0.13	9	0	123	1.39
TOT	12	1,933	9,489	4.91	96	407	0.21	4	13	9,909	5.13
AVG	9	161	791	4.78	96	34	0.21	4	1	826	4.99
JAN/04	5	59	295	4.99	88	12	0.21	4	27	334	5.66
FEB	4	60	103	1.72	67	10	0.17	6	41	154	2.57
MAR	3	52	145	2.79	78	5	0.10	3	37	187	3.60
APR	6	110	156	1.42	61	34	0.31	13	67	256	2.33
MAY	0	—	—	—	—	—	—	—	—	—	—
JUN	0	—	—	—	—	—	—	—	—	—	—
JUL	0	—	—	—	—	—	—	—	—	—	—
AUG	0	—	—	—	—	—	—	—	—	—	—
SEP	0	—	—	—	—	—	—	—	—	—	—
OCT	0	—	—	—	—	—	—	—	—	—	—
NOV	0	—	—	—	—	—	—	—	—	—	—
DEC	0	—	—	—	—	—	—	—	—	—	—
TOT	7	281	698	2.49	75	61	0.22	7	172	932	3.32
AVG	5	70	175	2.73	75	15	0.20	7	43	233	3.54

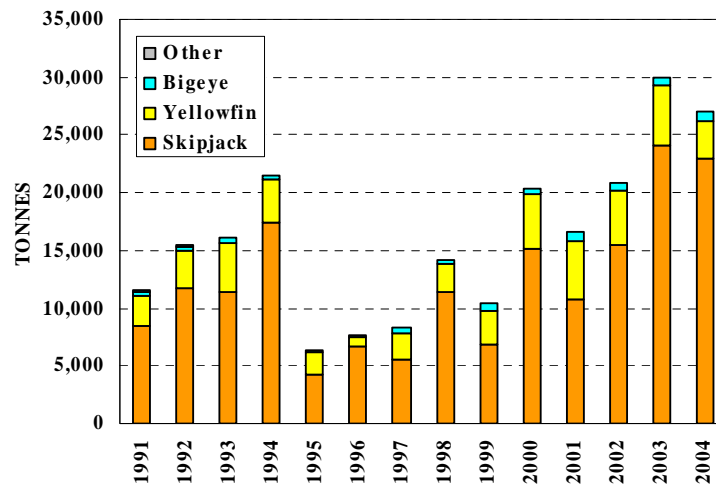
**PURSE SEINE: FEDERATED STATES OF MICRONESIA**

The statistics in Table 15 were determined from logsheet data held at SPC on 31 December 2005. Coverage is unknown. Figure 36 presents catch rates for skipjack and yellowfin. Figure 37 presents estimates of annual catches based on the available logsheet and unloadings data.



**Figure 36. Federated States of Micronesia purse seiner catch rates**

**Figure 36. Taux de prise des senneurs des États fédérés de Micronésie**



**Figure 37. Catches by Federated States of Micronesia purse seiners**

**Figure 37. Prises des senneurs des États fédérés de Micronésie**

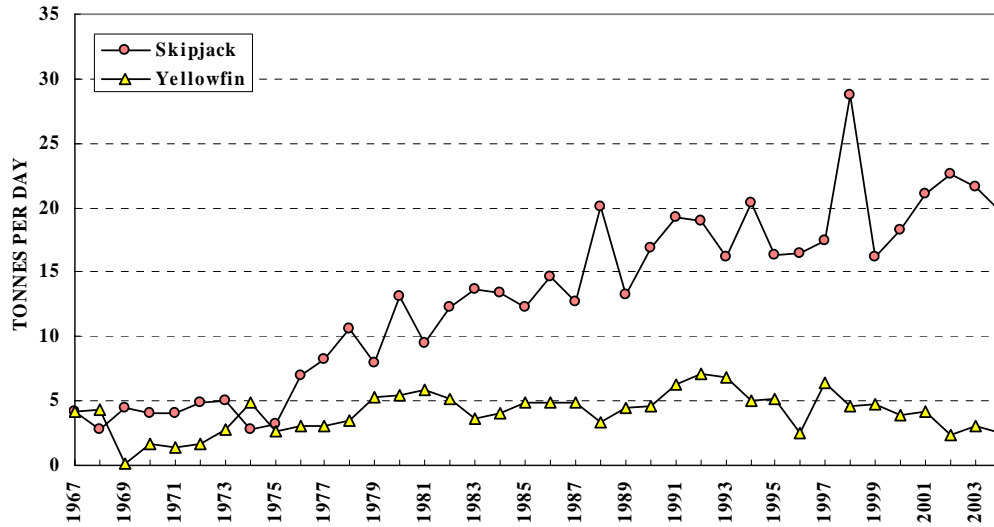
**Table 15. Catch statistics for Federated States of Micronesia purse seiners.** Units: Days Covered = days fished or searched; Catch = tonnes; CPUE = tonnes per day fished or searched.

**Tableau 15. Statistiques de prise des senneurs des États Fédérés de Micronésie.** Unités : Nbr de Jours = nombre de jours de pêche ou de recherche du poisson; Prises = tonnes; PUE = nombre de tonnes par jour de pêche ou de recherche du poisson.

MONTH	VESSELS COVERED	DAYS COVERED	SKIPJACK			YELLOWFIN			OTHERS	TOTAL	
			CATCH	CPUE	%	CATCH	CPUE	%		CATCH	CPUE
MOIS	NBR. DE NAVIRES	NBR. DE JOURS	BONITE			THON JAUNE			AUTRES	TOTAL	
			PRISES	PUE	%	PRISES	PUE	%		PRISES	PUE
JAN/03	7	143	2,756	19.27	91	257	1.80	9	0	3,013	21.07
FEB	7	154	2,551	16.57	78	720	4.67	22	0	3,271	21.24
MAR	5	81	2,068	25.53	95	117	1.44	5	0	2,185	26.98
APR	6	100	2,433	24.33	82	518	5.18	18	0	2,951	29.51
MAY	5	105	2,060	19.62	82	439	4.18	18	0	2,499	23.80
JUN	5	114	1,957	17.16	81	447	3.92	19	0	2,404	21.09
JUL	5	77	1,510	19.61	85	277	3.60	16	0	1,787	23.21
AUG	7	115	1,231	10.71	71	501	4.36	29	0	1,732	15.06
SEP	7	154	2,683	17.42	77	754	4.90	22	40	3,477	22.58
OCT	6	116	1,962	16.91	81	475	4.09	19	0	2,437	21.01
NOV	6	111	1,387	12.49	67	692	6.24	33	0	2,079	18.73
DEC	6	125	1,456	11.65	71	564	4.51	27	41	2,061	16.48
TOT	8	1,395	24,054	17.24	80	5,761	4.13	19	81	29,895	21.43
AVG	6	116	2,005	17.61	80	480	4.07	19	7	2,491	21.73
JAN/04	6	102	1,234	12.09	83	203	1.99	14	45	1,482	14.52
FEB	5	113	1,936	17.13	76	596	5.27	24	0	2,532	22.41
MAR	6	96	2,103	21.90	84	401	4.18	16	0	2,504	26.08
APR	6	118	1,697	14.38	86	284	2.41	14	0	1,981	16.79
MAY	6	145	2,916	20.11	93	208	1.44	7	0	3,124	21.55
JUN	6	85	625	7.35	84	123	1.45	16	0	748	8.80
JUL	4	98	1,272	12.98	68	589	6.01	32	0	1,860	18.98
AUG	5	97	1,871	19.28	88	245	2.52	12	0	2,116	21.81
SEP	5	125	3,452	27.61	89	425	3.40	11	0	3,876	31.01
OCT	5	84	2,622	31.22	93	198	2.36	7	0	2,821	33.58
NOV	5	87	1,685	19.36	89	206	2.37	11	0	1,891	21.73
DEC	5	110	1,515	13.77	79	411	3.73	21	0	1,926	17.51
TOT	6	1,260	22,925	18.19	85	3,889	3.09	14	46	26,860	21.32
AVG	5	105	1,910	18.10	85	324	3.09	14	4	2,238	21.23
JAN/05	5	118	2,280	19.32	88	308	2.61	12	0	2,587	21.93
FEB	6	94	1,938	20.62	93	139	1.48	7	0	2,078	22.10
MAR	6	124	3,224	26.00	85	568	4.58	15	0	3,792	30.58
APR	3	71	998	14.06	65	545	7.68	35	0	1,543	21.74
MAY	2	31	406	13.09	74	142	4.58	26	0	548	17.68
JUN	1	3	160	53.33	89	20	6.67	11	0	180	60.00
JUL	0	0	0	0.00	0	0	0.00	0	0	0	0.00
AUG	0	0	0	0.00	0	0	0.00	0	0	0	0.00
SEP	0	0	0	0.00	0	0	0.00	0	0	0	0.00
OCT	0	0	0	0.00	0	0	0.00	0	0	0	0.00
NOV	0	0	0	0.00	0	0	0.00	0	0	0	0.00
DEC	0	0	0	0.00	0	0	0.00	0	0	0	0.00
TOT	6	441	9,006	20.42	84	1,722	3.90	16	0	10,728	24.33
AVG	4	74	1,501	24.40	84	287	4.60	16	0	1,788	29.01

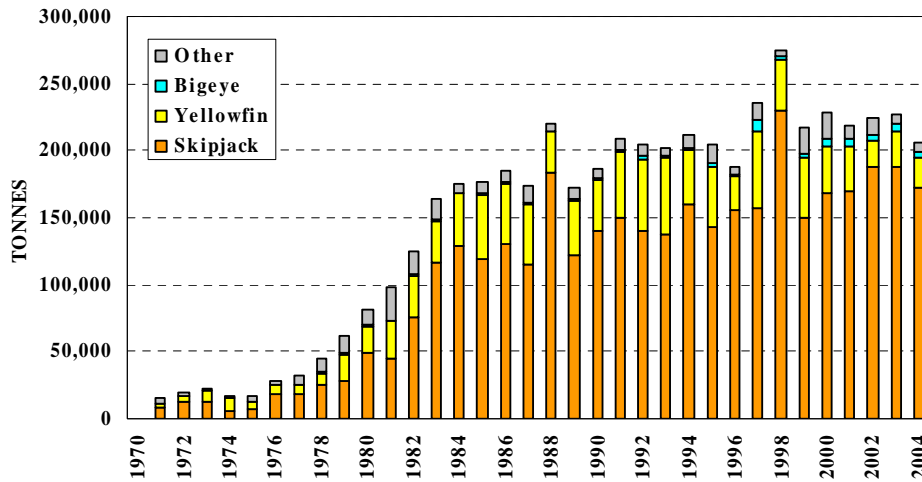
**PURSE SEINE: JAPAN**

The statistics in Table 16 and Figure 38 cover Japanese distant-water purse seiners. All statistics were determined from data provided by the Fisheries Agency of Japan, grouped by 1° longitude, 1° latitude and month. Figure 39 presents estimates of annual catches.



**Figure 38. Japanese purse seiner catch rates**

**Figure 38. Taux de prise des senneurs du Japon**



**Figure 39. Catches by Japanese purse seiners**

**Figure 39. Prises des senneurs du Japon**

**Table 16. Catch statistics for Japanese purse seiners.** Units: Days = days fished or searched; Catch = tonnes; CPUE = tonnes per day fished or searched.

**Tableau 16. Statistiques de prise des senneurs du Japon.** Unités : Nbr de Jours = nombre de jours de pêche ou de recherche du poisson; Prises = tonnes; PUE = nombre de tonnes par jour de pêche ou de recherche du poisson.

MONTH	VESSELS COVERED	DAYS	SKIPJACK			YELLOWFIN			OTHERS	TOTAL	
			CATCH	CPUE	%	CATCH	CPUE	%		CATCH	CPUE
MOIS	NBR. DE NAVIRES	NBR. DE JOURS	BONITE			THON JAUNE			AUTRES	TOTAL	
			PRISES	PUE	%	PRISES	PUE	%		PRISES	PUE
JAN/02	...	410	15,776	38.48	89	1,477	3.60	8	486	17,738	43.26
FEB	...	525	15,434	29.40	82	2,347	4.47	12	1,084	18,865	35.93
MAR	...	549	11,975	21.81	80	2,050	3.73	14	861	14,886	27.11
APR	...	466	13,837	29.69	87	1,358	2.91	9	630	15,825	33.96
MAY	...	761	14,654	19.26	80	2,636	3.46	14	1,112	18,403	24.18
JUN	...	1,227	16,381	13.35	74	2,572	2.10	12	3,074	22,026	17.95
JUL	...	955	21,304	22.31	84	1,020	1.07	4	2,977	25,301	26.49
AUG	...	981	18,777	19.14	80	1,413	1.44	6	3,386	23,575	24.03
SEP	...	850	17,974	21.15	87	1,505	1.77	7	1,290	20,769	24.43
OCT	...	643	13,240	20.59	92	502	0.78	4	600	14,342	22.31
NOV	...	452	11,539	25.53	84	672	1.49	5	1,458	13,669	30.24
DEC	...	489	17,161	35.09	88	1,587	3.25	8	797	19,546	39.97
TOT	...	8,308	188,052	22.64	84	19,138	2.30	9	17,755	224,945	27.08
AVG	...	692	15,671	24.65	84	1,595	2.51	9	1,480	18,745	29.16
JAN/03	...	474	13,172	27.79	77	3,647	7.69	21	363	17,182	36.25
FEB	...	553	20,552	37.16	92	1,139	2.06	5	712	22,403	40.51
MAR	...	481	19,511	40.57	96	396	0.82	2	381	20,288	42.18
APR	...	524	11,487	21.92	88	1,380	2.63	11	143	13,010	24.83
MAY	...	707	13,202	18.67	88	1,299	1.84	9	528	15,028	21.26
JUN	...	1,033	17,174	16.63	76	3,012	2.92	13	2,554	22,741	22.01
JUL	...	1,218	35,209	28.91	91	2,021	1.66	5	1,515	38,745	31.81
AUG	...	951	17,016	17.89	80	3,144	3.31	15	1,116	21,276	22.37
SEP	...	799	10,972	13.73	77	2,586	3.24	18	690	14,248	17.83
OCT	...	581	11,066	19.05	79	2,444	4.21	17	463	13,973	24.05
NOV	...	721	6,369	8.83	50	3,407	4.73	27	3,068	12,843	17.81
DEC	...	617	11,692	18.95	75	2,645	4.29	17	1,326	15,664	25.39
TOT	...	8,659	187,421	21.64	82	27,120	3.13	12	12,859	227,401	26.26
AVG	...	722	15,618	22.51	81	2,260	3.28	13	1,072	18,950	27.19
JAN/04	...	603	13,626	22.60	86	1,788	2.97	11	352	15,766	26.15
FEB	...	507	13,264	26.16	89	1,492	2.94	10	226	14,981	29.55
MAR	...	486	15,041	30.95	90	1,398	2.88	8	252	16,690	34.34
APR	...	800	17,962	22.45	78	4,277	5.35	18	912	23,150	28.94
MAY	...	942	16,996	18.04	72	1,840	1.95	8	4,716	23,552	25.00
JUN	...	1,018	12,907	12.68	65	1,472	1.45	7	5,614	19,994	19.64
JUL	...	1,021	19,640	19.24	81	1,412	1.38	6	3,073	24,125	23.63
AUG	...	913	15,404	16.87	81	1,993	2.18	10	1,707	19,104	20.92
SEP	...	651	10,283	15.80	78	2,237	3.44	17	591	13,111	20.14
OCT	...	666	15,234	22.87	86	1,929	2.90	11	542	17,705	26.59
NOV	...	600	11,270	18.78	81	1,446	2.41	10	1,182	13,898	23.16
DEC	...	589	10,936	18.57	78	1,342	2.28	10	1,714	13,993	23.76
TOT	...	8,796	172,563	19.62	80	22,627	2.57	10	20,881	216,070	24.57
AVG	...	733	14,380	20.42	80	1,886	2.68	11	1,740	18,006	25.15

### PURSE SEINE: PAPUA NEW GUINEA

The statistics in Table 17 and Figure 40 were determined from logsheet data held at SPC on 31 December 2005. Coverage is 99 per cent for 2003 and 97 per cent for 2004; the statistics in Table 17 have not been raised to represent complete coverage. Figure 41 presents estimates of annual catches.

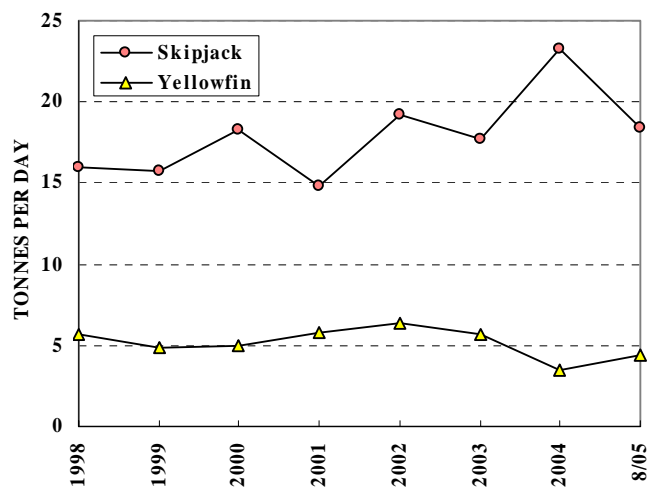


Figure 40. Papua New Guinea purse seiner catch rates

Figure 40. Taux de prise des senneurs de Papouasie-Nouvelle-Guinée

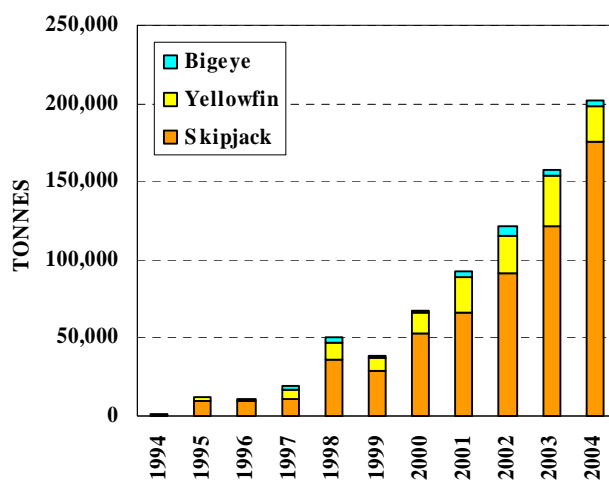


Figure 41. Catches by Papua New Guinea purse seiners

Figure 41. Prises des senneurs de Papouasie-Nouvelle-Guinée



**Table 17. Catch statistics for Papua New Guinea purse seiners.** Units: Days Covered = days fished or searched; Catch = tonnes; CPUE = tonnes per day fished or searched.

**Tableau 17. Statistiques de prise des senneurs de Papouasie-Nouvelle-Guinée.** Unités : Nbr de Jours = nombre de jours de pêche ou de recherche du poisson; Prises = tonnes; PUE = nombre de tonnes par jour de pêche ou de recherche du poisson.

MONTH	VESSELS COVERED	DAYS COVERED	SKIPJACK			YELLOWFIN			OTHERS	TOTAL	
			CATCH	CPUE	%	CATCH	CPUE	%		CATCH	CPUE
MOIS	NBR. DE NAVIRES	NBR. DE JOURS	BONITE			THON JAUNE			AUTRES	TOTAL	
			PRISES	PUE	%	PRISES	PUE	%		PRISES	PUE
JAN/03	22	429	12,067	28.13	85	2,177	5.07	15	20	14,264	33.25
FEB	23	431	9,995	23.19	71	3,984	9.24	28	60	14,040	32.57
MAR	23	494	17,258	34.94	81	3,994	8.08	19	21	21,273	43.06
APR	25	536	13,539	25.26	74	4,856	9.06	26	13	18,408	34.34
MAY	26	547	10,790	19.73	91	1,089	1.99	9	6	11,885	21.73
JUN	25	535	6,578	12.30	78	1,897	3.55	22	9	8,485	15.86
JUL	27	694	8,184	11.79	67	3,899	5.62	32	190	12,273	17.68
AUG	27	670	5,464	8.15	62	3,366	5.02	38	18	8,848	13.21
SEP	27	591	5,377	9.10	57	4,007	6.78	43	9	9,394	15.89
OCT	26	626	9,067	14.48	77	2,687	4.29	23	3	11,756	18.78
NOV	27	583	9,439	16.19	73	3,411	5.85	27	2	12,853	22.05
DEC	27	566	10,916	19.29	83	2,294	4.05	17	8	13,217	23.35
TOT	34	6,702	118,676	17.71	76	37,661	5.62	24	359	156,696	23.38
AVG	25	559	9,890	18.55	76	3,138	5.72	24	30	13,058	24.31
JAN/04	28	583	15,431	26.47	88	2,153	3.69	12	10	17,594	30.18
FEB	28	568	14,677	25.84	88	2,060	3.63	12	2	16,739	29.47
MAR	20	419	11,823	28.22	95	677	1.61	5	5	12,504	29.84
APR	20	417	12,571	30.15	96	580	1.39	4	9	13,160	31.56
MAY	28	631	15,577	24.69	89	1,979	3.14	11	8	17,563	27.83
JUN	30	646	8,651	13.39	85	1,531	2.37	15	13	10,194	15.78
JUL	30	709	11,173	15.76	68	5,351	7.55	32	13	16,537	23.32
AUG	31	715	15,714	21.98	84	2,911	4.07	16	27	18,651	26.08
SEP	30	629	14,784	23.50	85	2,544	4.04	15	53	17,381	27.63
OCT	30	725	18,989	26.19	89	2,321	3.20	11	42	21,351	29.45
NOV	30	662	15,326	23.15	92	1,334	2.01	8	18	16,677	25.19
DEC	28	675	16,805	24.90	90	1,863	2.76	10	14	18,682	27.68
TOT	34	7,379	171,521	23.24	87	25,300	3.43	13	213	197,034	26.70
AVG	28	615	14,293	23.69	87	2,108	3.29	13	18	16,420	27.00
JAN/05	30	530	8,503	16.04	84	1,556	2.93	15	28	10,087	19.03
FEB	30	588	9,704	16.50	82	2,008	3.42	17	86	11,798	20.06
MAR	20	404	9,939	24.60	87	1,394	3.45	12	46	11,379	28.17
APR	21	419	7,328	17.49	76	2,300	5.49	24	29	9,657	23.05
MAY	32	763	11,223	14.71	72	4,238	5.55	27	115	15,576	20.41
JUN	28	639	14,253	22.30	83	2,867	4.49	17	89	17,209	26.93
JUL	13	266	7,750	29.14	89	929	3.49	11	18	8,697	32.70
AUG	19	397	5,150	12.97	68	2,345	5.91	31	94	7,589	19.12
SEP	0	—	—	—	—	—	—	—	—	—	—
OCT	0	—	—	—	—	—	—	—	—	—	—
NOV	0	—	—	—	—	—	—	—	—	—	—
DEC	0	—	—	—	—	—	—	—	—	—	—
TOT	35	4,006	73,850	18.43	80	17,637	4.40	19	505	91,992	22.96
AVG	24	501	9,231	19.22	80	2,205	4.34	19	63	11,499	23.68

**PURSE SEINE: REPUBLIC OF KOREA**

The statistics in Table 18 and Figure 42 were determined from logsheet data held at SPC on 31 December 2005. Coverage is 82 per cent for 2003 and 90 per cent for 2004; the statistics in Table 18 have not been raised to represent complete coverage. Figure 43 presents estimates of annual catches.

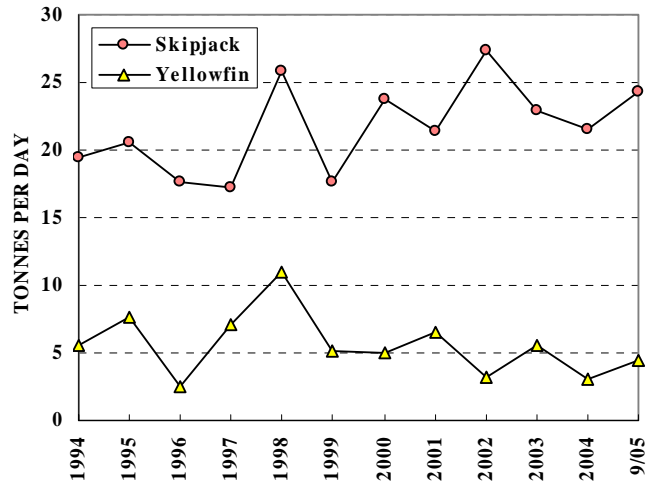


Figure 42. Korean purse seiner catch rates

Figure 42. Taux de prise des senneurs de Corée

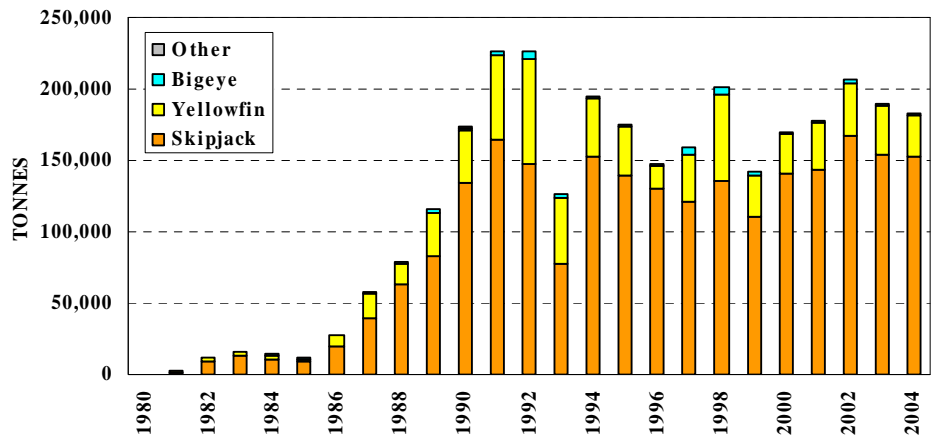


Figure 43. Catches by Korean purse seiners

Figure 43. Prises des senneurs de Corée

**Table 18. Catch statistics for Korean purse seiners.** Units: Days Covered = days fished or searched; Catch = tonnes; CPUE = tonnes per day fished or searched.

**Tableau 18. Statistiques de prise des senneurs de Corée.** Unités : Nbr de Jours = nombre de jours de pêche ou de recherche du poisson; Prises = tonnes; PUE = nombre de tonnes par jour de pêche ou de recherche du poisson.

MONTH	VESSELS COVERED	DAYS COVERED	SKIPJACK			YELLOWFIN			OTHERS	TOTAL	
			CATCH	CPUE	%	CATCH	CPUE	%		CATCH	CPUE
MOIS	NBR. DE NAVIRES	NBR. DE JOURS	BONITE			THON JAUNE			AUTRES	TOTAL	
			PRISES	PUE	%	PRISES	PUE	%		PRISES	PUE
JAN/03	26	533	19,370	36.34	86	3,105	5.83	14	5	22,480	42.18
FEB	23	418	11,930	28.54	57	8,963	21.44	43	7	20,900	50.00
MAR	23	450	15,725	34.94	92	1,295	2.88	8	30	17,050	37.89
APR	20	428	16,005	37.39	92	1,400	3.27	8	0	17,405	40.67
MAY	18	325	9,770	30.06	99	115	0.35	1	0	9,885	30.42
JUN	19	441	7,390	16.76	87	1,100	2.49	13	20	8,510	19.30
JUL	19	481	7,285	15.15	88	970	2.02	12	5	8,260	17.17
AUG	20	461	4,940	10.72	76	1,519	3.29	23	71	6,530	14.16
SEP	22	474	8,826	18.62	67	4,411	9.31	33	15	13,252	27.96
OCT	20	489	6,555	13.40	74	2,360	4.83	26	2	8,917	18.23
NOV	19	407	10,580	26.00	76	3,316	8.15	24	45	13,941	34.25
DEC	23	508	5,899	11.61	76	1,856	3.65	24	0	7,755	15.27
TOT	26	5,415	124,275	22.95	80	30,410	5.62	20	200	154,885	28.60
AVG	21	451	10,356	23.29	80	2,534	5.63	20	17	12,907	28.96
JAN/04	24	558	11,465	20.55	78	3,155	5.65	22	1	14,621	26.20
FEB	22	475	13,215	27.82	92	1,215	2.56	8	0	14,430	30.38
MAR	24	519	12,590	24.26	94	795	1.53	6	0	13,385	25.79
APR	24	567	11,945	21.07	94	745	1.31	6	0	12,690	22.38
MAY	24	553	11,440	20.69	96	525	0.95	4	5	11,970	21.65
JUN	23	478	5,495	11.50	98	110	0.23	2	5	5,610	11.74
JUL	24	617	10,330	16.74	74	3,620	5.87	26	0	13,950	22.61
AUG	26	655	10,395	15.87	79	2,814	4.30	21	13	13,222	20.19
SEP	25	579	13,558	23.42	86	2,277	3.93	14	18	15,852	27.38
OCT	25	612	18,236	29.80	91	1,884	3.08	9	10	20,130	32.89
NOV	23	496	11,597	23.38	91	1,142	2.30	9	1	12,740	25.69
DEC	24	567	13,590	23.97	86	2,195	3.87	14	0	15,785	27.84
TOT	26	6,676	143,856	21.55	88	20,477	3.07	12	53	164,386	24.62
AVG	24	556	11,988	21.59	88	1,706	2.97	12	4	13,699	24.56
JAN/05	23	534	10,505	19.67	73	3,958	7.41	27	3	14,466	27.09
FEB	23	431	8,730	20.26	81	2,035	4.72	19	1	10,766	24.98
MAR	23	519	12,768	24.60	87	1,972	3.80	13	2	14,742	28.40
APR	23	525	11,010	20.97	80	2,815	5.36	20	1	13,826	26.34
MAY	24	535	17,735	33.15	97	520	0.97	3	0	18,255	34.12
JUN	23	491	15,455	31.48	95	640	1.30	4	115	16,210	33.01
JUL	24	540	14,405	26.68	87	2,230	4.13	13	0	16,635	30.81
AUG	23	445	8,423	18.93	72	3,237	7.27	28	0	11,660	26.20
SEP	4	113	1,525	13.50	64	850	7.52	36	0	2,375	21.02
OCT	2	3	0	0.00	0	0	0.00	0	0	0	0.00
NOV	0	—	—	—	—	—	—	—	—	—	—
DEC	0	—	—	—	—	—	—	—	—	—	—
TOT	26	4,136	100,556	24.31	85	18,257	4.41	15	123	118,936	28.76
AVG	19	414	10,056	20.92	85	1,826	4.25	15	12	11,894	25.20

### PURSE SEINE: CHINESE TAIPEI

The statistics in Table 19 and Figure 44 were determined from logsheet data held at SPC on 31 December 2005. Coverage is complete for 2003 and 2004; the statistics in Table 19 have not been raised to represent complete coverage. Figure 45 presents estimates of annual catches.

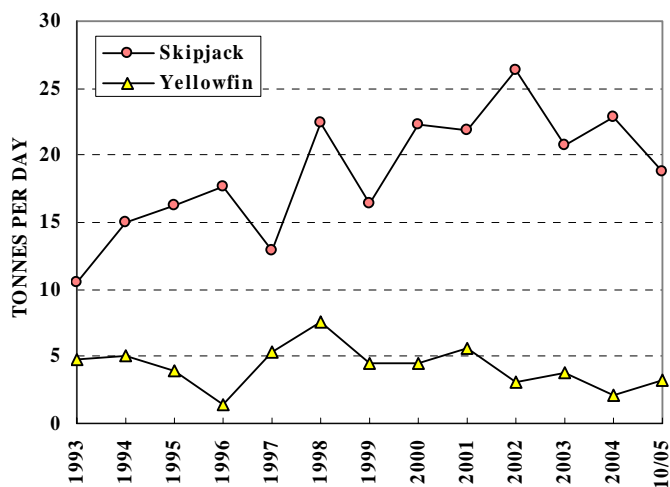


Figure 44. Chinese Taipei purse seiner catch rates

Figure 44. Taux de prise des senneurs de Taiwan

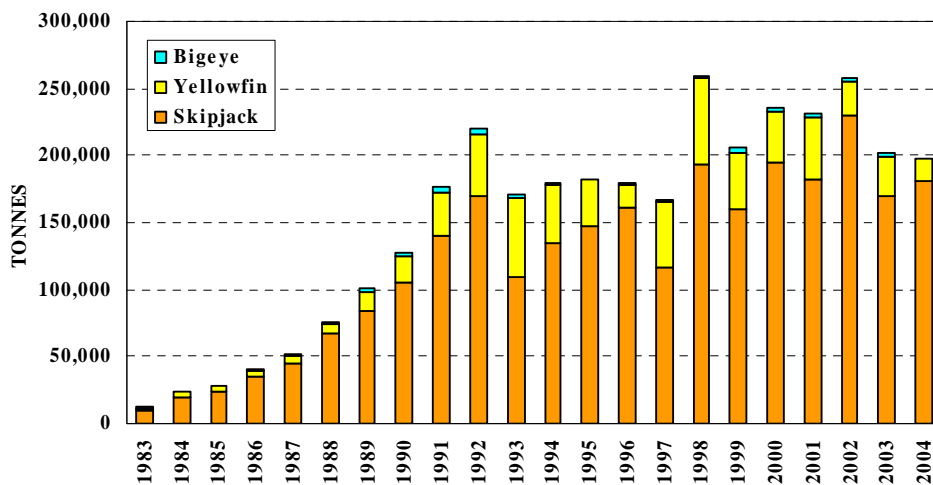


Figure 45. Catches by Chinese Taipei purse seiners

Figure 45. Prises des senneurs de Taiwan

**Table 19. Catch statistics for Chinese Taipei purse seiners.** Units: Days Covered = days fished or searched; Catch = tonnes; CPUE = tonnes per day fished or searched.

**Tableau 19. Statistiques de prise des senneurs de Taïwan.** Unités : Nbr de Jours = nombre de jours de pêche ou de recherche du poisson; Prises = tonnes; PUE = nombre de tonnes par jour de pêche ou de recherche du poisson.

MONTH	VESSELS COVERED	DAYS COVERED	SKIPJACK			YELLOWFIN			OTHERS	TOTAL	
			CATCH	CPUE	%	CATCH	CPUE	%		CATCH	CPUE
MOIS	NBR. DE NAVIRES	NBR. DE JOURS	BONITE			THON JAUNE			AUTRES	TOTAL	
			PRISES	PUE	%	PRISES	PUE	%		PRISES	PUE
JAN/03	36	775	20,201	26.07	87	2,761	3.56	12	207	23,169	29.90
FEB	36	656	21,561	32.87	89	2,249	3.43	9	467	24,277	37.01
MAR	34	626	22,780	36.39	89	2,412	3.85	9	298	25,490	40.72
APR	36	733	22,459	30.64	85	3,783	5.16	14	179	26,421	36.05
MAY	36	702	16,397	23.36	97	455	0.65	3	27	16,879	24.04
JUN	34	671	11,256	16.77	81	2,558	3.81	18	52	13,866	20.66
JUL	34	772	10,078	13.05	71	4,178	5.41	29	38	14,294	18.52
AUG	34	763	9,502	12.45	81	2,137	2.80	18	103	11,742	15.39
SEP	35	682	8,631	12.66	63	4,854	7.12	36	144	13,629	19.98
OCT	34	780	13,417	17.20	79	3,409	4.37	20	74	16,900	21.67
NOV	32	628	9,433	15.02	85	1,574	2.51	14	152	11,159	17.77
DEC	31	682	9,971	14.62	84	1,795	2.63	15	67	11,833	17.35
TOT	40	8,470	175,686	20.74	84	32,165	3.80	15	1,808	209,659	24.75
AVG	34	706	14,641	20.93	84	2,680	3.78	15	151	17,472	24.92
JAN/04	30	659	21,291	32.31	92	1,730	2.63	8	8	23,029	34.95
FEB	27	552	13,089	23.71	91	1,342	2.43	9	11	14,442	26.16
MAR	31	572	15,428	26.97	96	548	0.96	3	13	15,989	27.95
APR	32	655	17,463	26.66	96	778	1.19	4	21	18,262	27.88
MAY	34	699	16,312	23.34	94	1,088	1.56	6	14	17,414	24.91
JUN	32	669	8,539	12.76	93	560	0.84	6	51	9,150	13.68
JUL	31	738	12,022	16.29	76	3,784	5.13	24	12	15,818	21.43
AUG	30	702	12,902	18.38	87	1,927	2.75	13	68	14,897	21.22
SEP	29	682	13,009	19.07	83	2,673	3.92	17	59	15,741	23.08
OCT	33	749	17,881	23.87	95	949	1.27	5	67	18,897	25.23
NOV	33	699	18,034	25.80	97	548	0.78	3	13	18,595	26.60
DEC	32	697	18,774	26.94	96	791	1.13	4	18	19,583	28.10
TOT	35	8,073	184,744	22.88	92	16,719	2.07	8	354	201,816	25.00
AVG	31	673	15,395	23.01	92	1,393	2.05	8	29	16,818	25.10
JAN/05	30	717	11,354	15.84	91	1,138	1.59	9	24	12,516	17.46
FEB	29	619	10,294	16.63	88	1,343	2.17	11	48	11,685	18.88
MAR	30	625	14,575	23.32	86	2,223	3.56	13	66	16,864	26.98
APR	30	671	8,704	12.97	78	2,406	3.59	22	62	11,172	16.65
MAY	30	648	11,918	18.39	83	2,300	3.55	16	119	14,337	22.12
JUN	30	661	17,568	26.58	93	1,306	1.98	7	54	18,928	28.64
JUL	32	743	15,407	20.74	86	2,320	3.12	13	103	17,830	24.00
AUG	31	712	12,784	17.96	76	3,870	5.44	23	229	16,883	23.71
SEP	22	304	4,335	14.26	73	1,507	4.96	25	92	5,934	19.52
OCT	2	4	260	65.00	92	20	5.00	7	2	282	70.40
NOV	0	—	—	—	—	—	—	—	—	—	—
DEC	0	—	—	—	—	—	—	—	—	—	—
TOT	33	5,704	107,199	18.79	85	18,433	3.23	15	798	126,431	22.17
AVG	27	570	10,720	23.17	85	1,843	3.50	15	80	12,643	26.84

### PURSE SEINE: UNITED STATES OF AMERICA

The statistics in Table 20, which cover the United States purse-seine fleet in the Western and Central Pacific Ocean (Figure 1), were determined from logsheet data held at SPC on 31 December 2005. Coverage is complete for 2003 and 2004. Figure 46 presents estimates of catch rates for skipjack and yellowfin; the catch rates for 1981–2001 were provided by the National Marine Fisheries Service, while those for 2002–2005 were determined from logsheet data held at SPC and are thus preliminary. Figure 47 presents estimates of annual catches in the WCPO.

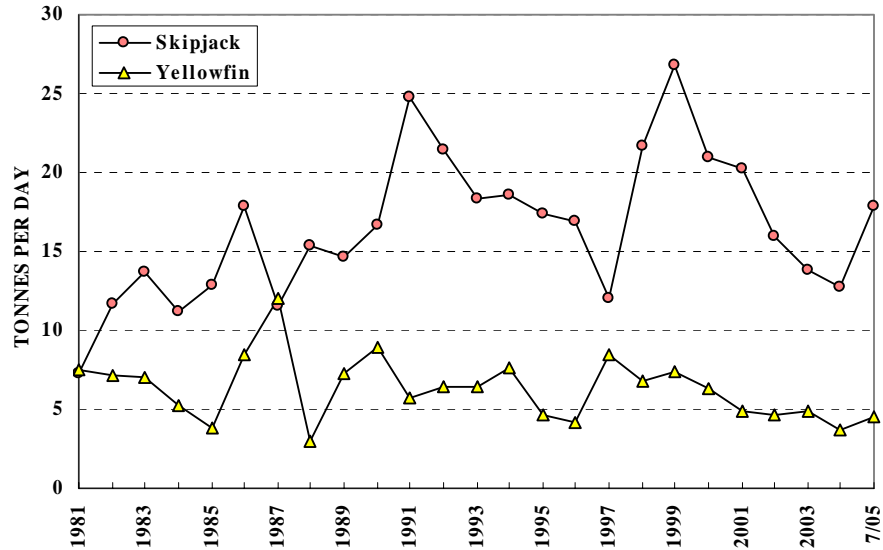


Figure 46. United States purse seiner catch rates

Figure 46. Taux de prise des senneurs des États-Unis d'Amérique

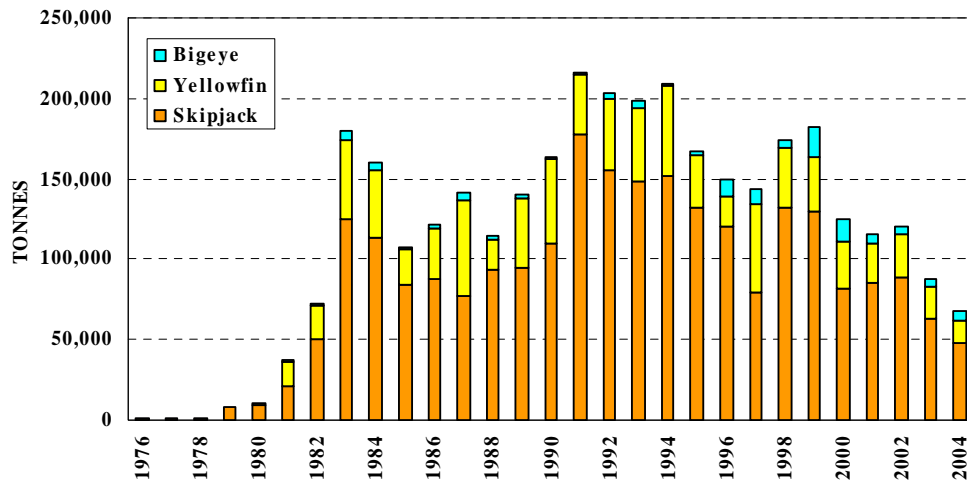


Figure 47. Catches by United States purse seiners

Figure 47. Prises des senneurs des États-Unis d'Amérique

**Table 20. Catch statistics for United States purse seiners.** Units: Days Covered = days fished or searched; Catch = tonnes; CPUE = tonnes per day fished or searched.

**Tableau 20. Statistiques de prise des senneurs des États-Unis.** Unités : Nbr de Jours = nombre de jours de pêche ou de recherche du poisson; Prises = tonnes; PUE = nombre de tonnes par jour de pêche ou de recherche du poisson.

MONTH	VESSELS COVERED	DAYS COVERED	SKIPJACK			YELLOWFIN			OTHERS	TOTAL	
			CATCH	CPUE	%	CATCH	CPUE	%		CATCH	CPUE
MOIS	NBR. DE NAVIRES	NBR. DE JOURS	BONITE			THON JAUNE			AUTRES	TOTAL	
			PRISES	PUE	%	PRISES	PUE	%		PRISES	PUE
JAN/03	17	342	6,523	19.07	83	1,209	3.54	15	104	7,837	22.91
FEB	21	345	4,926	14.28	57	3,755	10.88	43	37	8,718	25.27
MAR	23	430	5,848	13.60	64	3,221	7.49	35	97	9,166	21.32
APR	22	444	6,825	15.37	73	2,432	5.48	26	106	9,363	21.09
MAY	23	473	4,565	9.65	84	821	1.73	15	37	5,423	11.46
JUN	15	311	3,524	11.33	74	1,242	3.99	26	10	4,776	15.36
JUL	17	335	3,042	9.08	77	904	2.70	23	26	3,972	11.86
AUG	19	467	3,710	7.94	70	1,533	3.28	29	83	5,326	11.40
SEP	19	413	5,313	12.86	77	1,484	3.59	22	104	6,900	16.71
OCT	19	387	6,467	16.71	80	1,558	4.03	19	90	8,114	20.97
NOV	21	398	7,087	17.81	69	3,078	7.73	30	98	10,262	25.78
DEC	19	376	7,126	18.95	81	1,669	4.44	19	25	8,820	23.46
TOT	26	4,721	64,954	13.76	73	22,905	4.85	26	816	88,675	18.78
AVG	20	393	5,413	13.89	73	1,909	4.91	26	68	7,390	18.97
JAN/04	17	256	2,808	10.97	79	688	2.69	19	70	3,566	13.93
FEB	21	401	3,727	9.30	70	1,565	3.90	29	29	5,321	13.27
MAR	19	531	6,597	12.42	78	1,845	3.48	22	6	8,449	15.91
APR	17	386	4,604	11.93	68	2,203	5.71	32	0	6,807	17.63
MAY	17	291	3,529	12.13	69	1,551	5.33	31	5	5,084	17.47
JUN	16	335	3,768	11.25	73	1,386	4.14	27	11	5,165	15.42
JUL	17	453	3,372	7.44	67	1,593	3.52	31	103	5,069	11.19
AUG	17	381	5,737	15.06	81	1,319	3.46	19	49	7,105	18.65
SEP	15	282	4,475	15.87	84	805	2.85	15	40	5,320	18.87
OCT	15	368	6,500	17.66	87	899	2.44	12	39	7,438	20.21
NOV	16	271	4,790	17.68	85	838	3.09	15	36	5,664	20.90
DEC	11	237	3,300	13.92	86	557	2.35	14	1	3,858	16.28
TOT	23	4,192	53,207	12.69	77	15,248	3.64	22	390	68,845	16.42
AVG	17	349	4,434	12.97	77	1,271	3.58	22	32	5,737	16.64
JAN/05	14	276	2,442	8.85	78	681	2.47	22	17	3,141	11.38
FEB	15	301	3,606	11.98	85	593	1.97	14	21	4,220	14.02
MAR	15	364	6,958	19.12	83	1,440	3.96	17	18	8,417	23.12
APR	15	266	4,995	18.78	77	1,292	4.86	20	200	6,487	24.39
MAY	15	250	6,556	26.22	79	1,597	6.39	19	115	8,268	33.07
JUN	11	234	6,042	25.82	77	1,649	7.05	21	177	7,868	33.62
JUL	7	120	1,886	15.72	60	1,046	8.72	33	200	3,132	26.10
AUG	1	12	24	1.97	58	17	1.43	42	0	41	3.39
SEP	0	—	—	—	—	—	—	—	—	—	—
OCT	0	—	—	—	—	—	—	—	—	—	—
NOV	0	—	—	—	—	—	—	—	—	—	—
DEC	0	—	—	—	—	—	—	—	—	—	—
TOT	15	1,823	32,510	17.83	78	8,316	4.56	20	748	41,573	22.80
AVG	12	228	4,064	16.06	78	1,040	4.61	20	93	5,197	21.14