



Pacific
Community
Communauté
du Pacifique

Blue Pacific Continent

24 Pacific
Countries and
Territories

42 million
people

42 million
square
kilometres

30% of the
world's Exclusive
Economic Zones



Pacific
Community
Communauté
du Pacifique

Establishment of the Pacific Community (SPC)

IV. THE CANBERRA AGREEMENT

The Canberra Agreement has been legally amended six times. This is the consolidation of the current legal text of the treaty. The amending agreements and resolutions are in Part V

The agreement establishing the South Pacific Commission [Pacific Community]¹, Canberra, 6 February 1947, as amended ('the Canberra Agreement')

The Governments of Australia, the French Republic,² New Zealand, the United Kingdom of Great Britain and Northern Ireland,³ and the United States of America,⁴

Desiring to encourage and strengthen international co-operation in promoting the economic and social welfare and advancement of the peoples of the non-self-governing territories in the South Pacific region administered by them,

Have, through their duly authorised representatives met together in Canberra, made an Agreement in the following terms:

Article I

Establishment of the Pacific Community

1. There is hereby established the Pacific Community (hereinafter referred to as 'the Pacific Community').

Article II

ARTICLE II

- The SPC was established by Treaty after World War II in 1947 through collaboration and a shared vision
- Today, SPC has 27 members
- We work across 20+ sectors, with more than 800 staff, and an annual budget of USD 100m
- SPC responds to country needs through science, knowledge, and innovation
- We work alongside other agencies such as SPREP and the Forum Secretariat to realise the regions priorities and Leaders mandates

SPC is a regional public good and your organisation

2050
Blue Pacific
Strategy



National
Sustainable
Development
Priorities

2050 Strategy
Implementation Plan
(2023-2030)

SPC 10 Year Strategic Plan
(2022-2031)

GEM Division 5 Year Business Plan
(2023-2027)

1-3 Year Programme and Project Plans

Annual Individual Work Plans and Key Focus Areas



The success of the

Pacific One-Maritime Framework (POMF)

depends on enhanced
cooperation, strong
leadership and continued
participation at all levels of
the maritime sector

SPC's Geoscience, Energy and Maritime Division








Business Plan 2023-2027



Pacific
Community
Communauté
du Pacifique



GEM's thematic areas

	Water Security	Supporting sustainable management of water resources, increased access to safe water and sanitation, and resilience to extreme events such as floods and drought
	Maritime Transport Services	Improving the safety, connectivity and sustainability of maritime transportation
	Disaster and Climate Risk Management	Providing technical support and leadership across all stages of integrated disaster and climate risk management
	Ocean Services and Management	Developing tailored and innovative solutions to improve ocean literacy, capacity, monitoring and prediction, and sustainable management of a safe, accessible, and resilient ocean
	Sustainable Energy Security	Supporting improved access, efficient use and sustainable management of traditional energy sources
	Sustainable Georesources and Geosurveys	Applying science and technical solutions to improve geological knowledge, governance and capacity
	Earth Observations	Promoting spatial data and systems analysis and capacity to improve decision making to improve resilience and sustainable resource management

5th PRETMM committed to:

mobilising appropriate resources, finances, infrastructure, technology and capacity building for a safe, resilient, green, clean, digital, gender-just maritime transport for the Blue Pacific

Regional Picture

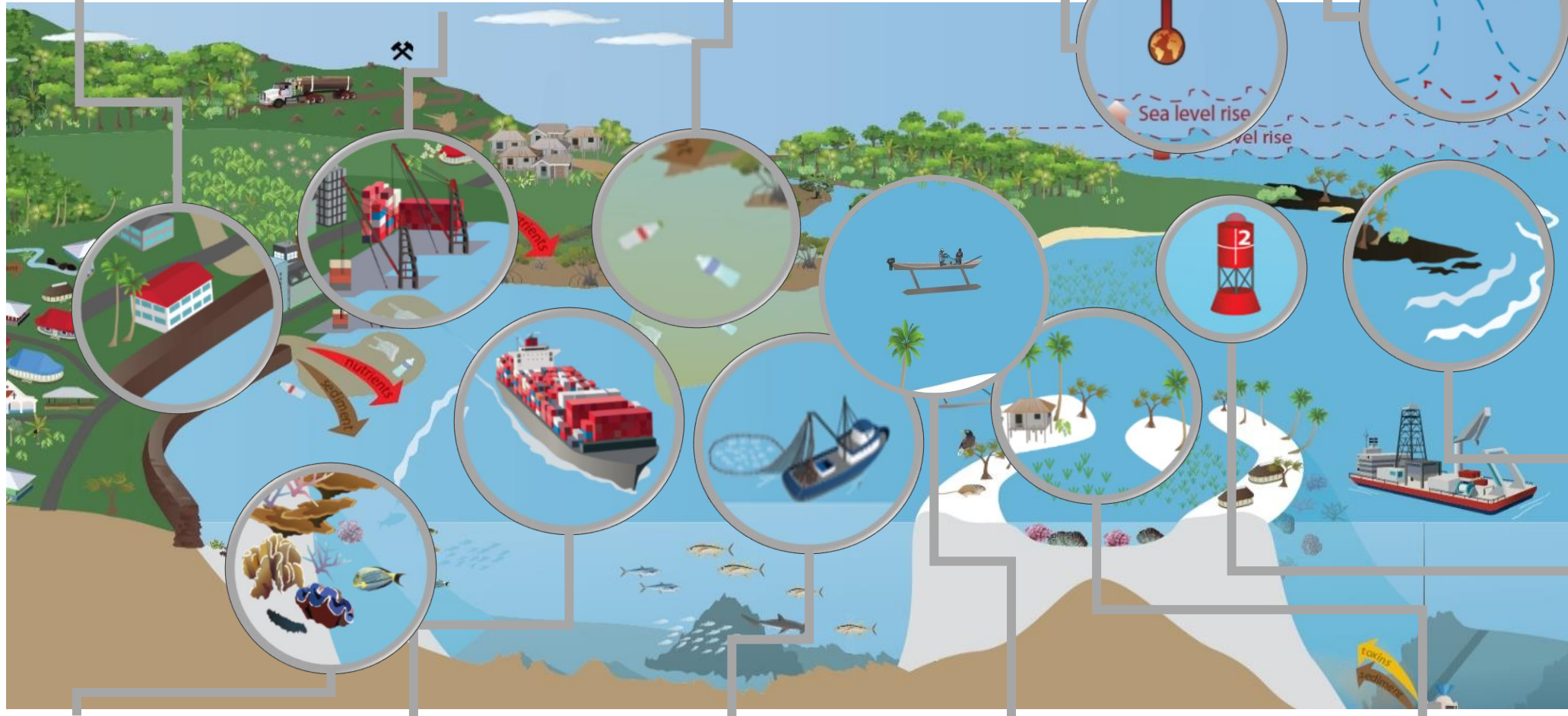
Coastal
Development

Ports &
Energy
transition

Pollution

Ocean & Climate
Nexus

MetOcean services



Governance,
Policies,
Security

Navigation

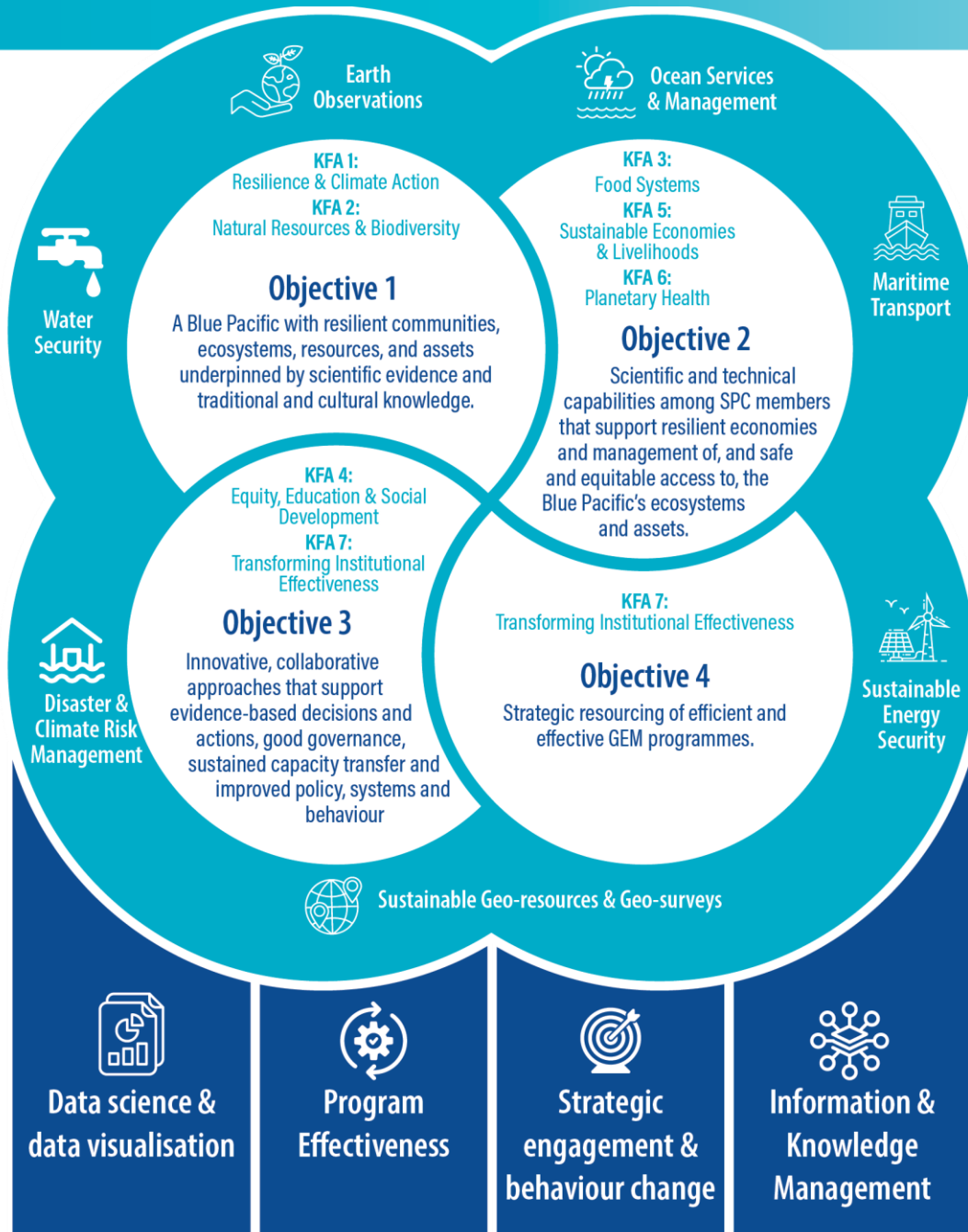
Conservation
& MPA

Shipping &
decarbonisation

Maritime
Industries

Community
connectivity

Coastal
Risk & resilience



Thank you



KFA 1: Resilience and Climate Action

KFA 2: Natural Resources and Biodiversity

Objective 1: A Blue Pacific with resilient communities, ecosystems, resources, and assets underpinned by scientific evidence and traditional and cultural knowledge

- GEM's unique role in the provision of scientific information
- Integration with traditional and cultural knowledge
- Enhancing decision making by Pacific leaders for resilience outcomes



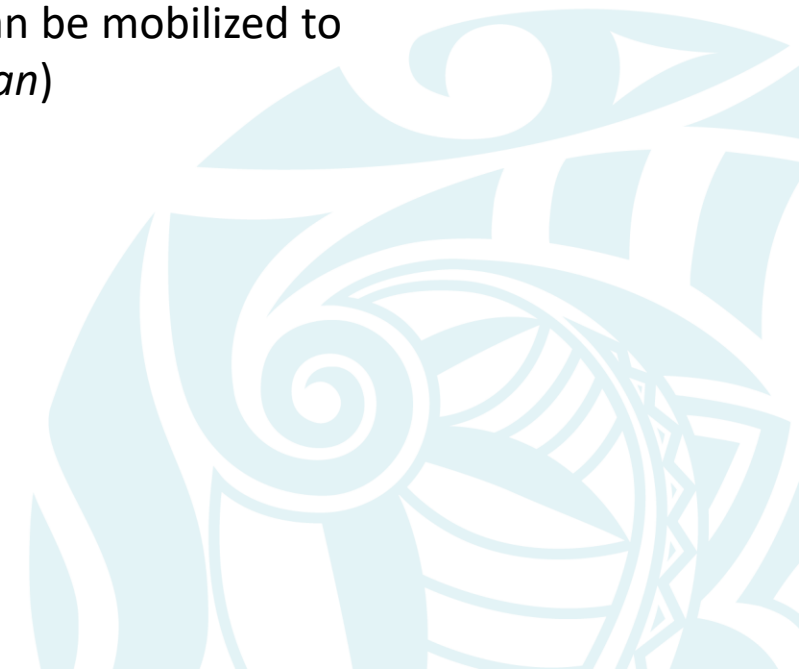
KFA 3: Food Systems

KFA 5: Sustainable Economies
and Livelihoods

KFA 6: Planetary Health

Objective 2: Scientific and technical capabilities among SPC members that support resilient economies and management of, and safe and equitable access to, the Blue Pacific's ecosystems and assets

- Using and strengthening unique capabilities to contribute to resilience and sustainable development outcomes
- Grounded in seven core technical priority areas
- Each priority area is underpinned by a suite of capabilities that can be mobilized to support member needs (*refer to pages 23 – 29 of the business plan*)



KFA 4: Equity, Education and Social Development

KFA 7: Transforming Institutional Effectiveness

Objective 3: Innovative, collaborative approaches that support evidence-based decisions and actions, good governance, sustained capacity transfer and improved policy, systems and behaviour

- Meaningful and strategic engagement to build capability and influence change across SPC member countries
- Supporting and investing in brokering of relationships and networks to influence regional, national and sub-national agendas
- Promoting sustained behaviour change to support sustainable development and resilience outcomes



KFA 7: Transforming Institutional Effectiveness

Objective 4: Strategic resourcing of efficient and effective GEM programmes

- Ensuring that internal systems and processes are optimized to best support member priorities
- Driving consistent approaches to programme management across GEM through stronger systems, structures and centralized personnel, underpinned by enabling priorities (*see below and refer to pages 30 and 31 of Business Plan*)
- Leaning increasingly towards strategic programme-level resourcing to drive efficiencies in our work



Information and Knowledge Management



Programme Effectiveness



Data science and Data Visualisation



Strategic Engagement and Behaviour Change.

