

**Federated States of Micronesia  
Education Sector**

**FSM NATIONAL JEMCO  
21 EDUCATION INDICATORS  
REPORT  
July 2013**



National Department of Education  
P.O. Box PS 87  
Palikir Station  
Pohnpei, FM 96941  
Phone: (691) 320-2609  
Fax: (691) 320-5500

Email related to this report: [mailto: wmendiola@fsmed.fm](mailto:wmendiola@fsmed.fm)

**FSM JEMCO Education Indicators**

1. Number of schools by grade level (i.e., elementary and secondary schools)
2. Number of schools by size (i.e., enrollment under 50, 51-100, 101-200, 201-300, 301-500, 501-1000, and over 1000)
3. Number of schools operating half-day sessions
4. Average teacher attendance rate by grade level (elementary and secondary)
5. Number & percent of staff by education level (i.e., high school diploma, AA/AS, BA/BS, etc.)
6. Number of teachers/staff by grade level
7. Student-to-teacher ratio (private and public)
8. Base populations by school age groups (i.e., total no. of 4-5 yr. olds, 6-13 yr. olds, 14-18, 19-22 yr olds)
9. Percent of base school-age population in school by age groups (% of 4-5 yr. olds, 6-13 yr. olds, 14-18 yr. olds actually enrolled)
10. Student enrollment by grade level and gender
11. Average daily student attendance rate by grade level and gender
12. Drop-out rate by grade level and gender (use beginning and ending enrollment)
13. Number and percent of students achieving "Proficiency" level & above, at selected grade levels for standardized tests (e.g., SAT) or criterion-referenced tests (e.g., locally developed tests)
14. Completion/graduation rate for 8<sup>th</sup> and 12<sup>th</sup> grades (private and public)
15. Number and percent of grade completers going to high school and high school graduates going to higher education
16. Number of student textbooks by subject areas and grade level
17. Per pupil expenditure (annual or entire budget operating k-12 budget divided by enrolled student count)
18. Number of parent involvement activities per year by school and average number of parents participating
19. Student enrollment in local institutions of higher education (IHE)
20. Number of IHE graduates by each diploma/degree level
21. Scholarships

- *Must be reported by July 31 each year*

## **A. Introduction**

In the Federated States of Micronesia, there are 4 states that comprise the Nation. There are 192 total schools (public and private) in the FSM with about 34% of the schools located in the outer islands which are only accessible by boats, ships and small air craft. The latest population count for FSM based on the 2010 census is at 102,843. Out of the total population, 36% (36,902) are in the school age range (4-18) for primary and secondary level. Data for School year 2012-2013 shows that 72% of the school age population were enrolled with the exclusion of about 4% due to age above 18 years old and missing date of birth.

Student population in the nation continues to decline in 2 consecutive years. Migration out of the country is one of the primary reason that contribute to the decline in student population as it also coincide with the finding by the office of statistics "the declining population is primarily due to the massive migration out of the country".

As required under the FSM Education Sector Grant in the Compact, FSM National Government is required to report on 20 education indicators developed jointly by the 4 FSM state representatives and OIA. The first JEMCO annual report was reported in 2005 and this year's report will be the 9<sup>th</sup> submission of the JEMCO Education Indicators Report to be submitted by the FSM Department of Education. All data submitted herein are based on data collected from all 4 states and reported as the National Report on Education.

In 2011, by recommendation of OIA representative, scholarship was incorporated into the report to show progress of scholarship recipients in the nation. The 20 Education indicator report has been changed to FSM National JEMCO 21 Education Indicators Report reflect the scholarship data.

This report encompasses demographic and student performance skills data. Issues concerning data collection, reliability and timely submission are covered in this report.

While much progress has been made over the years, some challenges still remain. These challenges include the following areas:

### **1. Reliability of Data**

With 34% of the schools located in areas where the only means communication is VHF radio, data from schools located on the outer islands will continue to be viewed as unreliable.

### **2. Consistency and timely submission of data**

With only two of the four states reporting both public and private demographic data, data elements such as enrollment, gender etc. will continue to be inconsistent and labeled as not reliable when reporting of trends and rates are reported.

Updated and timely submission of data from states to National Department of Education continues to be an issue that hinders the reporting of education reports.

In addressing issues relating to data quality and timeliness, FSM Association of Chief State School Officers (FACSSO), which comprises of the 4 states directors, Secretary of Education and the president of College of Micronesia adopted a resolution (FR12-04) in 2012 to enforce the submittal of verified and authenticated reports to the National Government on education matters. In the same year, JEMCO passed a resolution (RESOLUTION JEMCO 2012-MT-3) for an Independent Verification of Performance Indicators and Data for Government of the FSM to conduct an objective, professional, third-party review of the performance data.

To reaffirm the FSM's commitment to improve data collection and reporting, the following are in place to address both resolutions:

1. Data submitted from all 4 states are required to be submitted to the National Department of Education with the approval of each of the 4 state Directors.
2. FSM Department of Education issued an RFP for the Independent Verification of Performance Indicators and Data Quality.
3. Planning on developing an online Database that is compatible with current system in each of the states and allow state Department of Education data managers to submit data to National Department of Education.

Recommendations:

1. July 31<sup>st</sup> reporting deadline for JEMCO indicators report be reinstated to allow states sufficient time to collect data from all schools.
2. Revisit the 21 indicators for possible modifications.

National Minimum Competency Test (NMCT) 2013 data is not included this 21 JEMCO Indicator due to the fact that Chuuk State Education has adapted A Year-Around School System whereby school sessions are year around and are not arranged by quarters. School sessions run for a length of time (200 days or so), break for two weeks and start again.

As one of the JEMCO grant conditions, FSM is required to administer the NMCT to 100% of the schools in the nation. With the new submission date for NMCT, which is August, a single report on NMCT 2013 will be transmitted to OIA.

In previous report, Scholarship data covers only count of recipients and graduation for 2012 only. In this report, scholarship data show recipients by states, year and graduation rate across three school years.

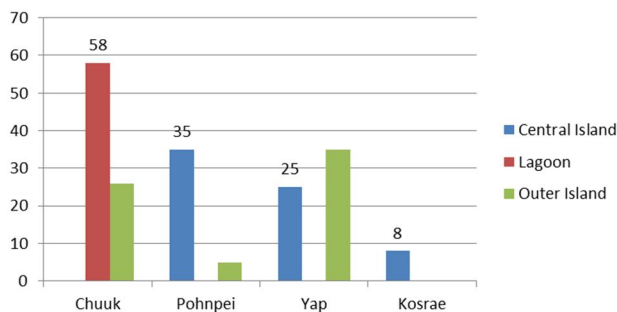
### 1. Number of School by elementary and secondary level, including ECE/SPED centers

State	ECE	Elementary	Middle School	Secondary	All Grade	No. Schools
Chuuk	0	63	0	10	11	84
Pohnpei	0	33	0	5	2	40
Yap	25	29	1	4	1	60
Kosrae	0	7	0	1	0	8
<b>FSM</b>	<b>25</b>	<b>132</b>	<b>1</b>	<b>20</b>	<b>14</b>	<b>192</b>

Indicator 1 shows the total count of schools in the Federated States of Micronesia. Compared to SY2011-2012, there is no significant change in the count of schools with the exception of Chuuk with a slight decrease in their school count from 85 in SY11-12 to 84 in SY12-13 after the merger of 2 of its public high schools. 192 represent the total count of private and public schools in the nation. Special Education center also merged into the elementary schools.

Graph on the right shows the count of schools by location. All state has schools located on the outer islands which is only accessible by boat, ship and small air craft. Only Kosrae has no outer island. Chuuk schools are distributed into 2 classifications, Lagoon and Outer Island. Weno island, located in the lagoon, is the commercial center of Chuuk State.

School Distribution by Location



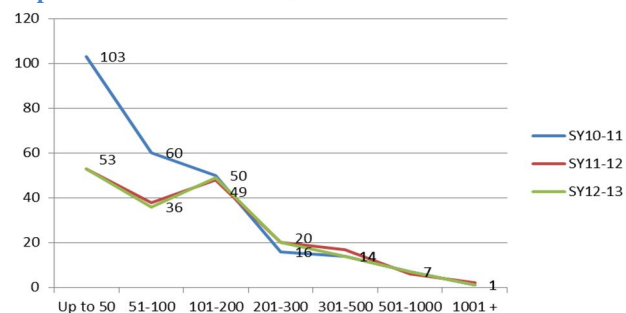
### 2. Number of schools by size

State	Up to 50	51-100	101-200	201-300	301-500	501-1000	1001+	Total
Chuuk	7	23	35	9	7	1	0	82
Pohnpei	4	4	7	9	4	5	1	34
Yap	41	8	6	0	1	0	0	56
Kosrae	1	1	1	2	2	1	0	8
<b>FSM</b>	<b>53</b>	<b>36</b>	<b>49</b>	<b>20</b>	<b>14</b>	<b>7</b>	<b>1</b>	<b>180</b>

Indicator 2 shows the count of school by student population. The most significant change in school count by size is Chuuk with a 12% decrease (58 schools with 50 and less student in SY2010-2011 down to 7 schools in SY2012-2013). This was achieved thru the merger of ECE with elementary schools and also elementary schools with junior high schools both in the lagoon and outer island of Chuuk.

The count of schools with 50 or less student dropped significantly from SY2010-2011 to SY2012-1. Graph 1 shows a the decline of about 51% from 103 in 2011 and down to 53 in 2013

Graph 1 School Count by Size from 2011-2013



### 3. Number of Schools operating half day sessions

There are no private or public schools operating half day sessions for instruction

#### 4. Average teacher attendance rate by gender and elementary and secondary

State	Elementary			Secondary		
	Male	Female	Rate	Male	Female	Rate
Chuuk	92%	92%	92%	96%	93%	94%
Pohnpei	90%	90%	89%	90%	91%	91%
Yap	97%	97%	97%	99%	99%	99%
Kosrae	n/a	n/a	n/a	n/a	n/a	n/a
<b>FSM</b>	<b>93%</b>	<b>93%</b>	<b>93%</b>	<b>95%</b>	<b>94%</b>	<b>95%</b>

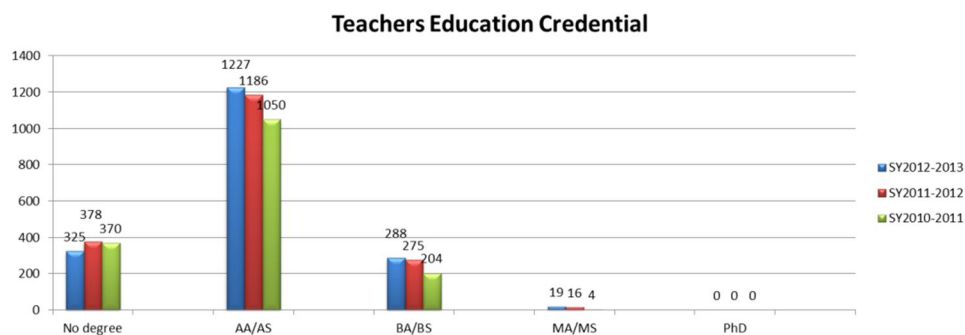
Only Kosrae did not submit any data for teacher attendance. Based on the data collected for SY2012-2013, there is a slight increase in the attendance rate for all states.

#### 5. Number and percentage of Teaching staff by education level

State	No degree		AA/AS		BA/BS		MA/MS		PhD		Total
	Male	Female	Male	Female	Male	Female	Male	Female	Male	Female	
Chuuk	86	88	207	270	64	60	10	5	0	0	790
Pohnpei	3	11	203	222	56	49	0	1	0	0	545
Yap	58	49	93	77	12	14	0	0	0	0	303
Kosrae	19	11	81	74	18	15	2	1	0	0	221
<b>Nation</b>	<b>166</b>	<b>159</b>	<b>584</b>	<b>643</b>	<b>150</b>	<b>138</b>	<b>12</b>	<b>7</b>	<b>0</b>	<b>0</b>	<b>1859</b>
<b>Percentage</b>	<b>17.48%</b>		<b>66.00%</b>		<b>15.49%</b>		<b>1.02%</b>		<b>0.00%</b>		<b>100%</b>

Indicator 5 shows the current count of all teachers by education credential in the Nation. Kosrae has a total of 223 teaching staff but with incomplete data for 2 teachers, the above table shows only 221 teachers.

Graph on the right shows a decrease of 12% in the count of none-degree teachers from Sy2010-2011 to Sy2012-2013. With a decrease in none degree teachers, teachers with AA/AS shows a 14% increase and BA/BS shows a 29% increase in 3 years period. The count of Teachers with MA/MS in Chuuk climbed to 19 in SY2012-2013 resulting in a 79% increase nationwide over the 3 year period.



#### 6. Number of Teachers and Staff by elementary and secondary

State	Elementary		Secondary		Total	
	Teachers	Staff	Teachers	Staff	Teachers	Staff
Chuuk	528	11	203	160	731	171
Pohnpei	426	90	119	53	545	143
Yap	242	78	61	27	303	105
Kosrae	163	39	59	8	222	47
<b>FSM</b>	<b>1359</b>	<b>218</b>	<b>442</b>	<b>248</b>	<b>1801</b>	<b>466</b>

Chuuk teacher count in the above table does not include 59 Special Education teachers due to incomplete data. Kosrae also is missing 1 teacher from the above table due to incomplete data.

#### 7. Student to Teacher ration by elementary and secondary

State	Elementary Students		Elementary Teachers		Elementary Ratio		Secondary Students		Secondary Teachers		Secondary Ratio	
	Private	Public	Private	Public	Private	Public	Private	Public	Private	Public	Private	Public
Chuuk	667	9085	47	481	14	19	581	2185	64	139	9	16
Pohnpei	n/a	7707	n/a	426	n/a	18	n/a	2744	n/a	119	n/a	23
Yap	n/a	1940	n/a	242	n/a	8	n/a	796	n/a	61	n/a	13
Kosrae	46	1438	7	155	7	9	n/a	681	n/a	59	n/a	12
<b>FSM</b>	<b>713</b>	<b>20170</b>	<b>54</b>	<b>1304</b>	<b>13</b>	<b>15</b>	<b>581</b>	<b>6406</b>	<b>64</b>	<b>378</b>	<b>9</b>	<b>17</b>

*In comparison to previous school year, there is no major change in the student teacher ratio in the 2 school year period. Chuuk shows a slight increase in elementary public schools from 18-1 ratio in sy2011-2012 to 19-1 in sy2012-2013. Pohnpei, Yap and Kosrae show the same rate of change with an increase of 1 or decrease of 1. Above table does not include 59 teachers from Chuuk and 2 teachers from Kosrae due to incomplete data.*

### 8. Base population by school age group

State	4-5 yr	6-13 yr	14-18 yr	Total
<b>Chuuk</b>				
Census	2365	9501	5990	17856
Actual	802	8133	3224	12159
<b>Pohnpei</b>				
Census	1742	6856	4326	12924
Actual	644	6023	3203	9870
<b>Yap</b>				
Census	448	2033	1241	3722
Actual	306	1332	867	2505
<b>Kosrae</b>				
Census	307	1295	798	2400
Actual	76	1250	753	2079
<b>*Census</b>	<b>4862</b>	<b>19685</b>	<b>12355</b>	<b>36902</b>
<b>Actual</b>	<b>1828</b>	<b>16738</b>	<b>8047</b>	<b>26613</b>

*Indicator 8 shows the latest census data on population count for each of the three age groups compared to actual count of students in the same age groups.*

### 9. Percent of base school-age population enrolled in school

State	4-5 yr	6-13 yr	14-18 yr	Total
Chuuk	33.91%	85.60%	53.82%	68.09%
Pohnpei	36.97%	87.85%	74.04%	76.37%
Yap	68.30%	65.52%	69.86%	67.30%
Kosrae	24.76%	96.53%	94.36%	86.63%
<b>FSM</b>	<b>37.60%</b>	<b>85.03%</b>	<b>65.13%</b>	<b>72.12%</b>

*With the set age range, about 4% of total student count is excluded from the calculation. The 4% encompasses students with age above 18 and also with missing and/or error in date of birth data. The same applies to previous year counting.*

**10. Student enrollment by elementary and secondary level and gender**

State	Elementary		Secondary		Total
	Male	Female	Male	Female	
Chuuk	5075	4677	1366	1400	12518
Pohnpei	3973	3734	1365	1379	10451
Yap	1018	922	449	347	2736
Kosrae	762	722	372	309	2165
<b>FSM</b>	<b>10828</b>	<b>10055</b>	<b>3552</b>	<b>3435</b>	<b>27870</b>

Enrollment during SY2012-2013 shows a 4% decline compared to previous school year. Pohnpei and Yap continues to report only public school enrollment.

**11. Average daily student's attendance rate by elementary and secondary and gender**

State	Elementary			Secondary		
	Male	Female	ERate	Male	Female	SRate
Chuuk	94%	94%	94%	99%	99%	99%
Pohnpei	84%	84%	84%	87%	86%	87%
Yap	98%	98%	98%	n/a	n/a	n/a
Kosare	98%	98%	98%	96%	97%	97%
<b>FSM</b>	<b>94%</b>	<b>94%</b>	<b>94%</b>	<b>94%</b>	<b>94%</b>	<b>94%</b>

Indicator above reflects the attendance rate for students in by states and as a nation. Data reflects SY2012-2013 attendance data as submitted by all 4 states.

**12. Drop-out rate by grade level and gender**

Grade Level	Drop Out		Enrollment		Rate		Overall Rate
	Male	Female	Male	Female	Male	Female	
ECE	26	25	1023	903	3%	3%	3%
1	1	0	1336	1179	0%	0%	0%
2	0	0	1242	1208	0%	0%	0%
3	2	1	1216	1155	0%	0%	0%
4	2	1	1214	1115	0%	0%	0%
5	0	0	1196	1086	0%	0%	0%
6	0	2	1166	1115	0%	0%	0%
7	1	2	1313	1179	0%	0%	0%
8	23	15	1076	1077	2%	1%	2%
9	32	15	1137	1127	3%	1%	2%
10	45	46	865	861	5%	5%	5%
11	44	20	838	788	5%	3%	4%
12	18	8	731	672	2%	1%	2%
<b>Total</b>	<b>194</b>	<b>135</b>	<b>14353</b>	<b>13465</b>	<b>1%</b>	<b>1%</b>	<b>1%</b>

Indicator 12 shows the total student enrollment compared to drop out data that is available. Data on drop out continues to be an issue for all 4 states.



**Chuuk**

Grade Level	Drop Out		Enrollment		Rate		Overall Rate
	Male	Female	Male	Female	Male	Female	
<b>ECE</b>			407	360	0%	0%	0%
<b>1</b>	1		708	559	0%	0%	0%
<b>2</b>			619	612	0%	0%	0%
<b>3</b>	2	1	583	548	0%	0%	0%
<b>4</b>	2	1	599	520	0%	0%	0%
<b>5</b>			583	556	0%	0%	0%
<b>6</b>		2	519	515	0%	0%	0%
<b>7</b>	1	2	572	516	0%	0%	0%
<b>8</b>	23	15	439	453	5%	3%	4%
<b>9</b>	7	2	464	477	2%	0%	1%
<b>10</b>	1		353	375	0%	0%	0%
<b>11</b>	2		315	303	1%	0%	0%
<b>12</b>			253	258	0%	0%	0%
<b>Total</b>	<b>39</b>	<b>23</b>	<b>6414</b>	<b>6052</b>	<b>1%</b>	<b>0%</b>	<b>0%</b>

*Chuuk continues to face under reporting of drop out data from schools.*

**Pohnpei**

Grade Level	Drop Out		Enrollment		Rate		Overall Rate
	Male	Female	Male	Female	Male	Female	
<b>ECE</b>	0	0	327	286	0%	0%	0%
<b>1</b>	0	0	448	439	0%	0%	0%
<b>2</b>	0	0	457	435	0%	0%	0%
<b>3</b>	0	0	441	449	0%	0%	0%
<b>4</b>	0	0	432	411	0%	0%	0%
<b>5</b>	0	0	421	367	0%	0%	0%
<b>6</b>	0	0	466	422	0%	0%	0%
<b>7</b>	0	0	535	474	0%	0%	0%
<b>8</b>	0	0	446	451	0%	0%	0%
<b>9</b>	25	13	464	457	5%	3%	4%
<b>10</b>	25	35	295	351	8%	10%	9%
<b>11</b>	20	15	323	307	6%	5%	6%
<b>12</b>	4	5	283	264	1%	2%	2%
<b>Total</b>	<b>74</b>	<b>68</b>	<b>5338</b>	<b>5113</b>	<b>1%</b>	<b>1%</b>	<b>1%</b>

**Yap**

Grade Level	Drop Out		Enrollment		Rate		Overall Rate
	Male	Female	Male	Female	Male	Female	
ECE	26	25	200	186	13%	13%	13%
1			104	93	0%	0%	0%
2			85	86	0%	0%	0%
3			114	92	0%	0%	0%
4			92	103	0%	0%	0%
5			102	81	0%	0%	0%
6			98	96	0%	0%	0%
7			108	97	0%	0%	0%
8			115	88	0%	0%	0%
9			124	93	0%	0%	0%
10			130	71	0%	0%	0%
11			106	102	0%	0%	0%
12			89	81	0%	0%	0%
<b>Total</b>	<b>26</b>	<b>25</b>	<b>1467</b>	<b>1269</b>	<b>2%</b>	<b>2%</b>	<b>2%</b>

**Kosrae**

Grade Level	Drop Out		Enrollment		Rate		Overall Rate
	Male	Female	Male	Female	Male	Female	
ECE	0	0	89	71	0%	0%	0%
1	0	0	76	88	0%	0%	0%
2	0	0	81	75	0%	0%	0%
3	0	0	78	66	0%	0%	0%
4	0	0	91	81	0%	0%	0%
5	0	0	90	82	0%	0%	0%
6	0	0	83	82	0%	0%	0%
7	0	0	98	92	0%	0%	0%
8	0	0	76	85	0%	0%	0%
9	0	0	85	100	0%	0%	0%
10	19	11	87	64	22%	17%	20%
11	22	5	94	76	23%	7%	16%
12	14	3	106	69	13%	4%	10%
<b>Total</b>	<b>55</b>	<b>19</b>	<b>1134</b>	<b>1031</b>	<b>5%</b>	<b>2%</b>	<b>3%</b>

**13. Number and percent of students achieving “Proficiency” level and above, at selected grade level for standardized test**

The FSM National Standardized Tests (NST) is a series of test instruments used as the basis for measuring the effectiveness of the National Curriculum Minimum Standards which are implemented in schools across the FSM. Previous years the FSM Education Sector normally used achievement criteria for student proficiencies in the order of advanced, proficient, basic and below basic. Based on the new recommendation by the Office of Insular Affairs and mandated by JEMCO that the test instruments be evaluated for their reliability and validity.

The student achievement criteria had been changed from what was indicated earlier to the followings: Competence, minimum competency, below and well below. Our interpretation is that although the names changes we still maintain the integrity of these levels. All tables and charts below display students’ learning performance from all the four states in grades 6, 8, and 10 for two English Language standards in reading and literature.

The NMCT report will become available in August.

**14. Completion/graduation rate for 8<sup>th</sup> and 12<sup>th</sup> graders (Private/Public)**

State	Type	8th Enrolled	8th Grad	Rate	12th Enrolled	12th Grad	Rate
Chuuk	Public	844	475	56.28%	384	391	101.82%
	Private	50	15	30.00%	123	101	82.11%
Pohnpei	Public	897	876	97.66%	547	532	97.26%
	Private	n/a	n/a	n/a	n/a	n/a	n/a
Yap	Public	203	185	91.13%	170	157	92.35%
	Private	n/a	n/a	n/a	n/a	n/a	n/a
Kosrae	Public	153	n/a	n/a	175	153	87.43%
	Private	8	3	37.50%	n/a	n/a	n/a
<b>Total</b>		<b>2155</b>	<b>1554</b>	<b>72%</b>	<b>1399</b>	<b>1334</b>	<b>95%</b>

Data for Chuuk indicate the under-reporting of 12<sup>th</sup> graders compared with graduation data which reflect the 102% graduation rate.

**15. Number and percent of grade 8 completers going to high school and high school graduates going to higher education**

State	Completed 8	Going to HS	Percent	Completed 12	Going to IHE	Percent
Chuuk	490	n/a	n/a	492	n/a	n/a
Pohnpei	876	644	73.52%	532	355	66.73%
Yap	185	n/a	n/a	157	n/a	n/a
Kosrae	169	n/a	n/a	153	n/a	n/a
<b>FSM</b>	<b>1720</b>	<b>644</b>	<b>37.44%</b>	<b>1334</b>	<b>355</b>	<b>26.61%</b>

Pohnpei data indicate that about 74% of the 8 graders who completed 8<sup>th</sup> grade will enter into high school and about 67% of completed 12<sup>th</sup> graders will be attending Institute of Higher Education. This year shows a decline compared to previous school year for Pohnpei. The other 3 states did not submit sufficient to be included in the above table.

**16. Number of student textbook by subject area and elementary and secondary**

Textbooks	Chuuk		Kosrae		Pohnpei		Yap	
	Elementary	Secondary	Elementary	Secondary	Elementary	Secondary	Elementary	Secondary
Math	0	0	0	0	0	440	0	0
LangArts	0	0	0	0	0	0	0	0
Science	0	0	0	0	0	500	0	0
Social Study	0	0	0	0	0	0	0	0
<b>FSM</b>	<b>0</b>	<b>0</b>	<b>0</b>	<b>0</b>	<b>0</b>	<b>940</b>	<b>0</b>	<b>0</b>

No indication of any textbook purchased in all states except for Pohnpei.

**17. Per Pupil expenditure (annual operating K-12 budget divided by enrolled student count)**

State	SEG	ESG	Enrollment	PPE
Chuuk	\$ 4,465,620.00	\$ 9,343,525.00	12,518	\$1,103
Pohnpei	\$ 2,974,339.00	\$ 7,374,354.00	10,451	\$990
Yap	\$ 1,855,583.00	\$ 3,874,645.00	2,736	\$2,094
Kosrae	\$ 1,280,928.00	\$ 2,439,446.00	2,165	\$1,718
<b>FSM</b>	<b>\$ 10,576,470.00</b>	<b>\$ 23,031,970.00</b>	<b>27,818</b>	<b>\$1,208</b>

The PPE for this school year showed little change in comparison to previous report.

**19. Student Enrollment in local institution of higher education (IHE) by gender**

Campus	Summer 2012			Fall 2012			Spring 2013			Total Enrollment
	Male	Female	Total	Male	Female	Total	Male	Female	Total	
Chuuk	90	109	199	171	238	409	161	211	372	980
Pohnpei	121	144	265	377	394	771	300	287	587	1623
Yap	29	79	108	97	130	227	82	104	186	521
Kosrae	74	69	143	143	125	268	121	96	217	628
National	247	313	560	462	607	1069	428	548	976	2605
<b>Total</b>	<b>561</b>	<b>714</b>	<b>1,275</b>	<b>1,250</b>	<b>1,494</b>	<b>2,744</b>	<b>1,092</b>	<b>1,246</b>	<b>2,338</b>	<b>6357</b>

This school year, college of Micronesia included the enrollment of summer to the fall and spring where previous year only Fall and spring enrollment was reported.

**20. Number of local IHE graduates by each diploma/degree level and gender**

(2011-2012)

Major	Summer 2012			Fall 2012			Spring 2013			Grand Total
	Male	Female	Total	Male	Female	Total	Male	Female	Total	
Ag. & Nat. Res. Management			0			0		1	1	1
Agriculture	1		1			0		1	1	2
Agriculture and Food Technology			0	7	10	17	2	4	6	23
Bookkeeping	1		1	1	2	3		1	1	5
Building Maintenance and Repair			0	2		2	1		1	3
Building Technology			0	6		6	4		4	10
Business Administration	1	2	3	5	9	14	2	5	7	24
Cabinet Making/Furniture Making			0			0	4	1	5	5
Career Education: Motor Vehicle Mechanic			0	1		1		1	1	2
Carpentry			0			0	1		1	1
Computer Information Systems	4	1	5	8	7	15	7	2	9	29
Construction Electricity			0	1		1	2		2	3
Early Childhood Education		1	1			0			0	1
Electronic Engineering Technology	1		1	8		8			0	9
Electronics Technology	5		5	8	1	9	6		6	20
Health Assistant Training Program			0		1	1			0	1
Health Career Opportunities Program		4	4		5	5	5	5	10	19
Hospitality and Tourism Management			0			0	3	4	7	7
In-Service Elementary Education			0		1	1			0	1
Liberal Arts	2	6	8	4	22	26	9	15	24	58
Marine Science		1	1	2	1	3	5	2	7	11
Micronesian Studies		2	2	6	2	8	4	6	10	20
Public Health		1	1	2	1	3	1	5	6	10
Secretarial Science		1	1		3	3		1	1	5
Teacher Education - Elementary		2	2	1	2	3	3	1	4	9
Teacher Preparation	3	9	12	13	20	33	15	24	39	84
Teacher Preparation - Elementary	1	4	5	4	4	8	4	7	11	24
Telecommunications			0	7		7			0	7
Trial Counselor	2		2	2	5	7			0	9
<b>Total</b>	<b>21</b>	<b>34</b>	<b>55</b>	<b>88</b>	<b>96</b>	<b>184</b>	<b>78</b>	<b>86</b>	<b>164</b>	<b>403</b>

Total Graduates from College of Micronesia increased by about 9% compared to previous school year as shown in the above table.

## Number of Scholarship Recipients

### School Year

2010-2011

Funding Agency	Freshman	Sophomore	Junior	Senior	Graduate	Postgraduate	Total
CDOE	221	118	66	35	23	5	468
KDOE	42	31	11	16	1		101
NDOE	13	16	21	18			68
PDOE	130	76	64	35	5		310
Yap R&D	73	99	36	32	7	2	249
<b>TOTAL</b>	<b>479</b>	<b>340</b>	<b>198</b>	<b>136</b>	<b>36</b>	<b>7</b>	<b>1196</b>

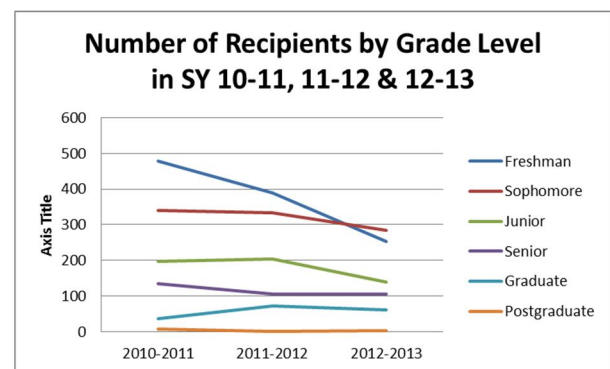
2011-2012

Funding Agency	Freshman	Sophomore	Junior	Senior	Graduate	Postgraduate	Total
CDOE	237	96	68	28	25	1	455
KDOE	18	47	24	13	3		105
PDOE	72	93	71	33	32	1	302
Yap R&D	62	98	41	31	13		245
<b>TOTAL</b>	<b>389</b>	<b>334</b>	<b>204</b>	<b>105</b>	<b>73</b>	<b>2</b>	<b>1107</b>

2012-2013

Funding Agency	Freshman	Sophomore	Junior	Senior	Graduate	Postgraduate	Total
CDOE	128	119	34	26	16	2	325
KDOE	32	34	24	16	2	1	109
PDOE	52	75	51	38	29	1	246
Yap R&D	40	57	30	27	15		169
<b>TOTAL</b>	<b>252</b>	<b>285</b>	<b>139</b>	<b>107</b>	<b>62</b>	<b>4</b>	<b>849</b>

The chart and this graph are showing the number of scholarship recipients by grade level in School Years 10-11, 11-12 and 12-13. As shown in the graph that the recipient of scholarship is decreasing except for graduate and postgraduate level. The decrease is a result of the decrease in scholarship funding resulting in fewer students to be awarded by each state. Although applications seem to increase every year, only a few are actually awarded. The steady number of recipient in graduate and postgraduate level is due to the Sin-tax Scholarship which is reserve only for graduate and postgraduate level students.



## Number of Graduates by each state

### CHUUK

Graduates	Associates	3rd Year	Bachelor	Masters	Doctorate	Total
SY 07-08	34	0	30	3	0	67
SY 08-09	20	0	14	2	0	36
SY 09-10	56	0	21	2	0	79
SY 10-11	64	5	25	6	1	101
SY 11-12	49	9	22	1	0	81
SY 12-13	38	6	9	2	1	56
<b>TOTAL</b>	<b>261</b>	<b>20</b>	<b>121</b>	<b>16</b>	<b>2</b>	<b>420</b>

### KOSRAE

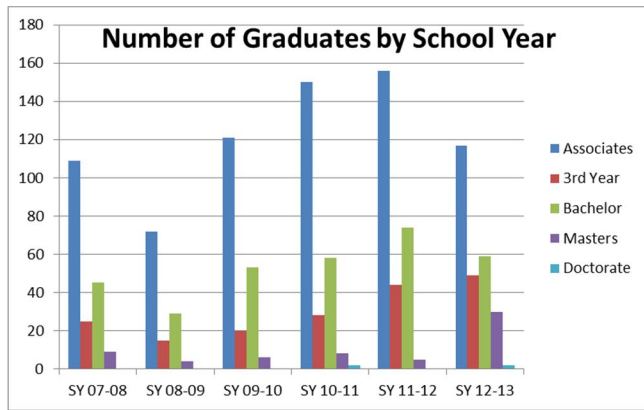
Graduates	Associates	3rd Year	Bachelor	Masters	Doctorate	Total
SY 07-08	23	0	5	0	0	28
SY 08-09	16	0	2	0	0	18
SY 09-10	22	2	14	2	0	40
SY 10-11	22	3	11	0	0	36
SY 11-12	17	0	5	0	0	22
SY 12-13	19	4	11	0	0	34
<b>TOTAL</b>	<b>119</b>	<b>9</b>	<b>48</b>	<b>2</b>	<b>0</b>	<b>178</b>

### POHNPEI

Graduates	Associates	3rd Year	Bachelor	Masters	Doctorate	Total
SY 07-08	36	24	9	5	0	74
SY 08-09	20	12	4	1	0	37
SY 09-10	26	15	7	1	0	49
SY 10-11	34	16	9	1	0	60
SY 11-12	40	25	32	1	0	98
SY 12-13	23	35	24	25	1	108
<b>TOTAL</b>	<b>179</b>	<b>127</b>	<b>85</b>	<b>34</b>	<b>1</b>	<b>426</b>

### YAP

Graduates	Associates	3rd Year	Bachelor	Masters	Doctorate	Total
SY 07-08	16	1	1	1	0	19
SY 08-09	16	3	9	1	0	29
SY 09-10	17	3	11	1	0	32
SY 10-11	30	4	13	1	1	49
SY 11-12	50	10	15	3	0	78
SY 12-13	37	4	15	3	0	59
<b>TOTAL</b>	<b>166</b>	<b>25</b>	<b>64</b>	<b>10</b>	<b>1</b>	<b>266</b>



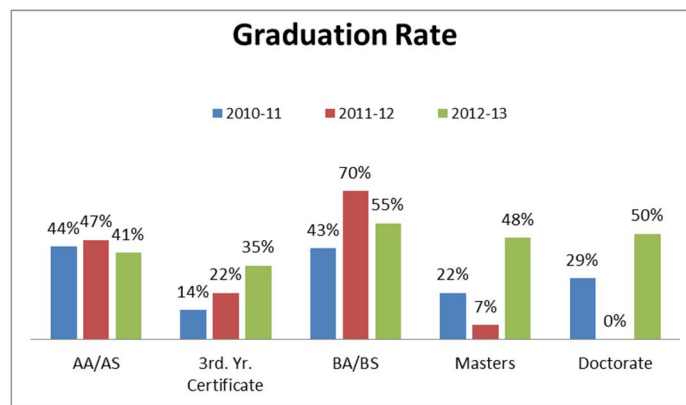
This is the chart that indicates the number of graduates by school year since School Year 2007-2008 to School Year 2012-2013. Data shows that AA degree graduate is highest among all level especially in SY 10-11 to SY 11-12. There is also a steady increase in graduation in the 3rd. Year level and Masters. This also indicates that many of our Associate Degree graduates do not pursue higher degree level after AA/AS degree. The Bachelors level is at a steady

level of about 60 graduates per year. There are more and more students enrolling in Master level programs and are graduating. Most of these Master level students are taking online courses.

## Graduation Rate Per Degree Level in 3 School Years

Sch. Yr.	Sophomore (AA/AS)			Junior (3rd. Yr. Certificate)			Senior (BA/BS)			Graduate (Masters)			Postgraduate (Doctorate)		
	Recipients	Graduates	Percentage	Recipients	Graduates	Percentage	Recipients	Graduates	Percentage	Recipients	Graduates	Percentage	Recipients	Graduates	Percentage
2010-2011	340	150	44%	198	28	14%	136	58	43%	36	8	22%	7	2	29%
2011-2012	334	156	47%	204	44	22%	105	74	70%	73	5	7%	2	0	0%
2012-2013	285	117	41%	139	49	35%	107	59	55%	62	30	48%	4	2	50%
<b>TOTAL</b>	<b>959</b>	<b>423</b>	<b>44%</b>	<b>541</b>	<b>121</b>	<b>22%</b>	<b>348</b>	<b>191</b>	<b>55%</b>	<b>171</b>	<b>43</b>	<b>25%</b>	<b>13</b>	<b>4</b>	<b>31%</b>

The table and graph above of each of the degree levels throughout three school increase in the rate of 2012-2013. The average 12-13 is about 43% while SY 11-12 is at about 39%. increases as the degree level the graph above. These students who receive three years. The numbers of other students who did but also graduated from any of the degree levels are included. Overall, the graduation rate is a steady increase throughout the years.



show the graduation rate as well as certificate years. There is great graduation in school year rate of graduation for SY SY 10-11 is at 34% and The graduation rate also increases too as shown in numbers only reflect scholarships in those may increase if records not receive scholarship