

Hitting the spot! Behind the scenes of the PIMPLE training videos

PIMPLE, not a pretty name but a memorable one, stands for Performance Indicators and Management Procedures Explorer. This app has been developed by the Fisheries, Aquaculture and Marine Ecosystems Division of the Pacific Community to support the harvest strategy decision making process, with new training videos now available to help users.

The Western and Central Pacific Fisheries Commission has agreed to a workplan for adopting a harvest strategy approach for the four main tuna stocks. A harvest strategy is a formalised framework for fisheries management that provides the best chance of achieving management objectives, both for the fishery and the fish stock. It represents a best-practice approach for fisheries management as well being an important consideration for Marine Stewardship Council certification.

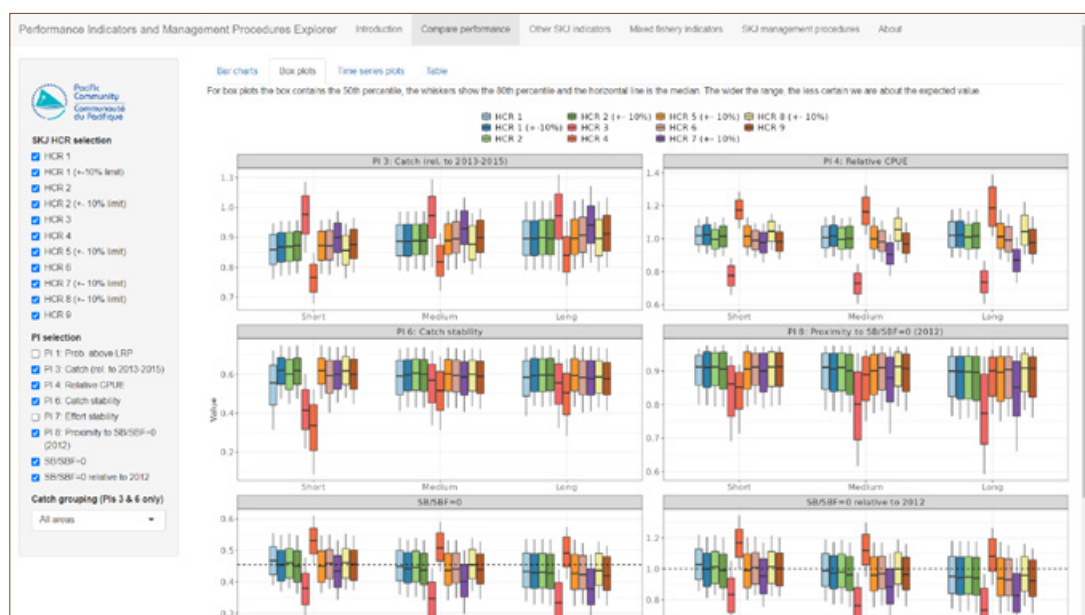
Central to a harvest strategy is a management procedure that sets fishing opportunities, such as effort or catch limits, using an estimate of stock status, such as the current biomass. A management procedure has three components: data collection, a stock status estimation method, and a pre-agreed rule known as a harvest control rule (HCR). Agreeing the management procedure is a key step on the road to developing a harvest strategy.

This requires members to interrogate the results of the computer simulations performed by SPC's Oceanic Fisheries Programme's Stock Assessment and Management Team (OFP SAM), investigate the resulting performance indicators for each management procedure, and identify which of the candidate management procedures they prefer. This is not a trivial task given the large amount of information that is produced!

To support this process, an online tool, called PIMPLE,¹ has been developed by OFP SAM that allows users to explore the simulation results for skipjack in the WCPO. To help members use this tool, two training videos have been produced. The first video takes users on a tour of the app and explains some of the many features. The second video is a demonstration of how PIMPLE can be used to help select preferred management procedures.

The videos see the return of established (fisheries) film star Marino-O-Te-Au Wichman, last seen in the harvest strategy video.² They also introduce the rising talent of Ludwig Kumoru, who surely has a glittering acting career ahead of him.

Less frantic in nature than the previous harvest strategy film, the videos produced their own challenges, mainly how to make a potentially dry subject, such as an instructional video for an online tool, engaging for the viewer. The so-



PIMPLE allows users to explore simulation results to help select the preferred management procedure.

¹ <https://ofp-sam.shinyapps.io/PIMPLE2022/>

² <https://www.youtube.com/watch?v=zM3B9DLmtZg&list=PLCq-WnF3HdriCtkevYvru-OeiMOxD4oZn&index=3>

• *SPC activities* •


lution was to stage it as a conversation between users, with one asking the questions and the other providing guidance. This emphasises the human element of the harvest strategy development process. Stakeholders and members make all the key decisions! Hopefully, the result will be informative to viewers but still entertaining to watch.

Silver screen veteran Marino said of the film: “The harvest strategy videos have been a great learning tool both for

myself and our target audience. I’ve enjoyed tackling these difficult and technical concepts and trying to convey them to fisheries folks in a fun but serious manner. The Monitoring Strategy Evaluation team have been great in delivering a solid script and our seasoned film director, Brian, has used some cool filming techniques that have produced a high-quality product. The hours have been gruelling where my best has always been demanded. But I remind myself that it is anything for the members! I hope you enjoy this video because we enjoyed filming it.”



Marino explains the PIMPLE app to Ludwig, who has many questions. Image: © SPC

 The final films are available here:
<https://www.youtube.com/playlist?list=PLCq-WnF-3HdrjCtkevYvru-OeiMOxD4oZn>

For more information:

Finlay Scott
Senior Fisheries Scientist (Management Strategy
Evaluation Modeller) - FAME, SPC
finlays@spc.int

The stars, Ludwig and Marino, getting made-up for the bright lights. © SPC

