

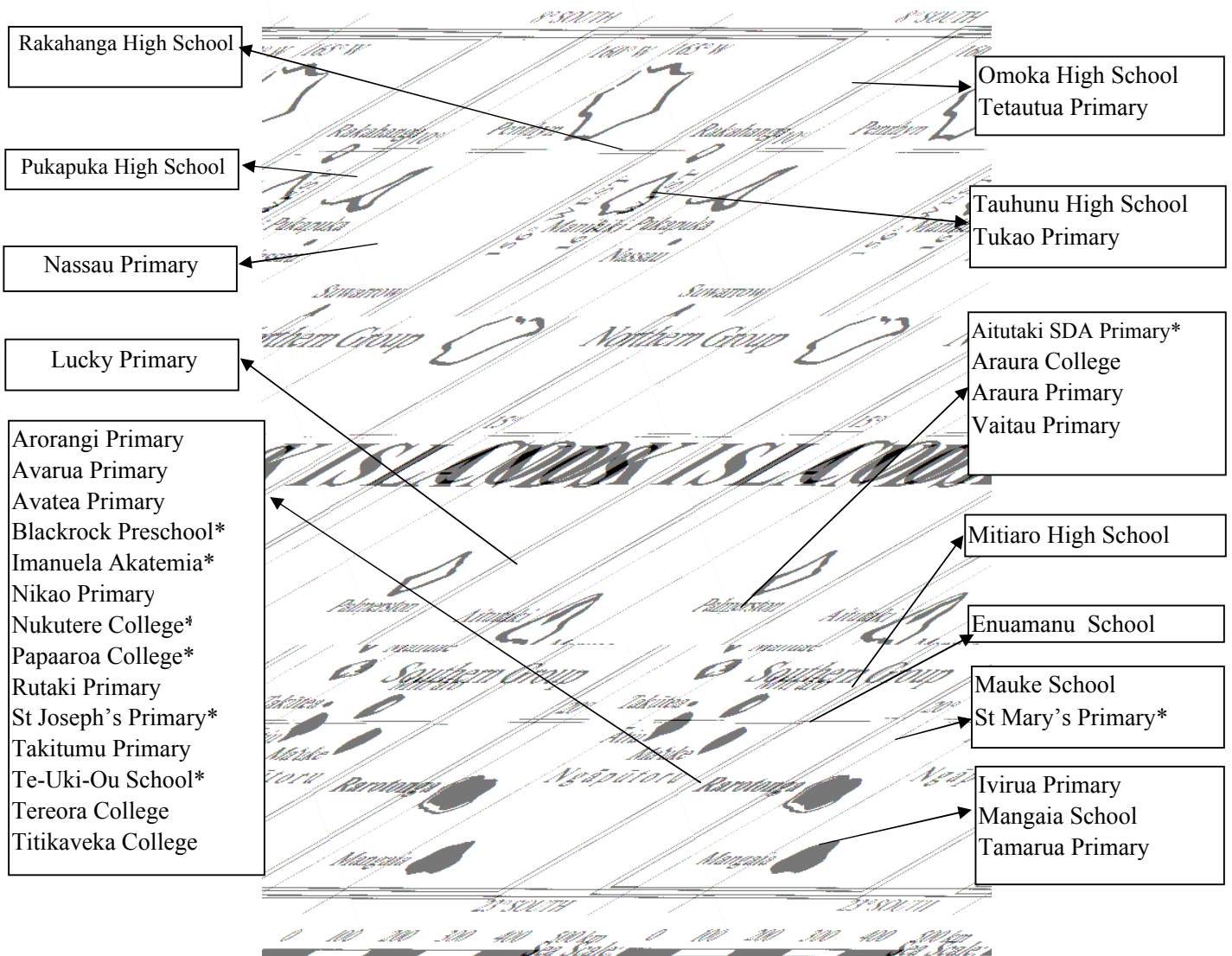
COOK ISLANDS SCHOOLS

DISTRIBUTION OF SCHOOLS

The Cook Islands consists of 15 islands. Rarotonga is the main island in terms of population and economic activity. The Southern Group, which excludes Rarotonga in this digest, consists of 7 islands, 2 of which (Manuae and Takutea) are not permanently populated. The least populated region is the Northern Group. The group consists of 7 islands with only Suvarrow lacking permanent population.

Schools are established on all 12 permanently populated islands. All 33 schools in the Cook Islands are co-educational. There are 14 schools on Rarotonga, 11 in the Southern Group and 8 in the Northern Group.

MAP OF COOK ISLANDS SCHOOLS



*Church or Private Schools

STATUS OF SCHOOLS

The Government has established schools on all twelve permanently inhabited islands. "Private " is used to denote a non-government school neither owned nor operated by a religious organisation. The two private schools, Blackrock Preschool and Te-Uki-Ou Primary, are located on Rarotonga. There are also four Church schools on Rarotonga. Two are administered by the Catholic Church (St Joseph's and Nukutere), one by the Seventh Day Adventist Church (Papaaroa) and one by the Assembly of God Church (Imanuela Akatemia). The Catholic Church also administers a primary school (St Mary's) on Mauke and the SDA Church administers a primary school (Aitutaki SDA) on Aitutaki.

STATUS OF SCHOOLS BY REGION

Status	Rarotonga	Southern Grp	Northern Grp	Total
Government	8	9	8	25
Church	4	2	0	6
Private	2	0	0	2
Total	14	11	8	33

TEACHERS AND STUDENTS BY SCHOOL STATUS

Status	Schools	Teachers			Students			P-T Ratio
		Male	Female	Total	Male	Female	Total	
Church	6	8	28	36	322	281	603	17
Government	25	61	173	234	1958	1829	3787	16
Private	2	2	10	12	90	93	183	15
Total	33	71	211	282	2370	2203	4573	16

STUDENT : SCHOOL RATIOS BY ISLAND

Island	Schools	Students	Student/Sch
Aitutaki	4	565	141
Atiu	1	169	169
Mangaia	3	233	78
Manihiki	2	105	53
Mauke	2	149	75
Mitiaro	1	59	59
Nassau	1	46	46
Palmerston	1	27	27
Penrhyn	2	92	46
Pukapuka	1	253	253
Rakahanga	1	35	35
Rarotonga	14	2840	203
Total	33	4573	139

LEVELS OF SCHOOL

PRE-SCHOOL students are children aged from 3 years 6 months up to 4 years 11 months inclusive who are voluntarily enrolled for pre-school instruction.

PRIMARY students are children who are enrolled for instruction at Grade 1 - 6 level. Attendance is compulsory from the age of 5. The expected age range is from 5 to 10 years if a child spends one year in each grade.

SECONDARY students are children and young adults who are enrolled for instruction at Form 1 - Senior Level 1. Attendance is compulsory until the end of the year in which a student turns 15 years of age.

LEVELS	RANGE	SCHOOLS	NAME OF SCHOOLS
Preschool only	PreS	1	Blackrock
Preschool & Primary only	PreS - G3	1	Tamarua
	PreS - G6	7	Takitumu, Rutaki, St Joseph's, Araura Primary, Vaitau Aitutaki SDA, Ivirua
Preschool, Primary & Secondary	PreS - F2	5	Avarua, Nikao, Te-Uki-Ou, Arorangi, St Mary's
	PreS - F3	2	Lucky School, Rakahanga
	PreS - F4	1	Nassau
	PreS - Snr Lvl 1	3	Mauke School, Mitiaro, Omoka
	PreS - Snr Lvl 2	4	Enuamanu School, Tukao, Pukapuka, Tauhunu,
	PreS - Snr Lvl 3	2	Imanuela Akatemia, Mangaia School
Primary & Secondary only	G1 - F1	1	Tetautua
	G1 - F2	1	Avatea
	G1 - F4	1	Papaaroa College
Secondary only	F1 - Snr Lvl 1	2	Titikaveka College, Nukutere College
	F1 - Snr Lvl 2	1	Araura College
	F3 - Snr Lvl 3	1	Tereora College

Schools with :	Rarotonga	Sth Group	Nth Group	Total
Pre-school pupils	9	10	7	26
Primary pupils	10	10	8	28
Secondary pupils	10	6	8	24

STUDENT ENROLMENTS

COMPARISON OF 2005 ENROLMENTS WITH 1996 AND 2004

DISTRICT	1996	1997	1998	1999	2000	2001	2002	2003	2004	2005	1996/2005 Change	1996/2005 % Change	2004/2005 Change	2004/2005 % Change
Aitutaki	855	763	726	710	651	642	595	560	570	565	-290	-34%	-5	-0.9%
Atiu	316	283	251	216	200	196	186	195	196	169	-147	-47%	-27	-13.8%
Mangaia	378	357	341	308	275	266	257	245	236	233	-145	-38%	-3	-1.2%
Manihiki	171	178	41	124	121	129	147	154	135	105	-66	-39%	-30	-19.5%
Mauke	249	233	239	215	202	189	177	174	152	149	-100	-40%	-3	-1.7%
Mitiaro	100	95	80	80	75	68	75	87	73	59	-41	-41%	-14	-16.1%
Nassau	29	30	42	38	37	38	26	28	35	46	17	59%	11	39.3%
Palmerston	10	3	0	12	0	9	17	23	26	27	17	170%	1	4.3%
Penrhyn	195	171	166	141	138	124	124	118	96	92	-103	-53%	-4	-3.4%
Pukapuka	268	254	251	258	264	249	219	207	233	253	-15	-6%	20	9.7%
Rakahanga	58	67	63	46	31	38	40	38	32	35	-23	-40%	3	7.9%
Rarotonga	2931	2801	2750	2619	2554	2709	2805	2783	2847	2840	-91	-3%	-7	-0.3%
Total	5560	5235	4950	4767	4548	4657	4668	4612	4631	4573	-987	-18%	-58	-1.3%

REGION	1996	1997	1998	1999	2000	2001	2002	2003	2004	2005	1996/2005 Change	1996/2005 % Change	2004/2005 Change	2004/2005 % Change
Northern Group	731	703	563	619	591	587	573	568	557	558	-173	-24%	1	0.2%
Rarotonga	2931	2801	2750	2619	2554	2709	2805	2783	2847	2840	-91	-3%	-7	-0.3%
Southern Group	1898	1731	1637	1529	1403	1361	1290	1261	1227	1175	-723	-38%	-52	-4.1%

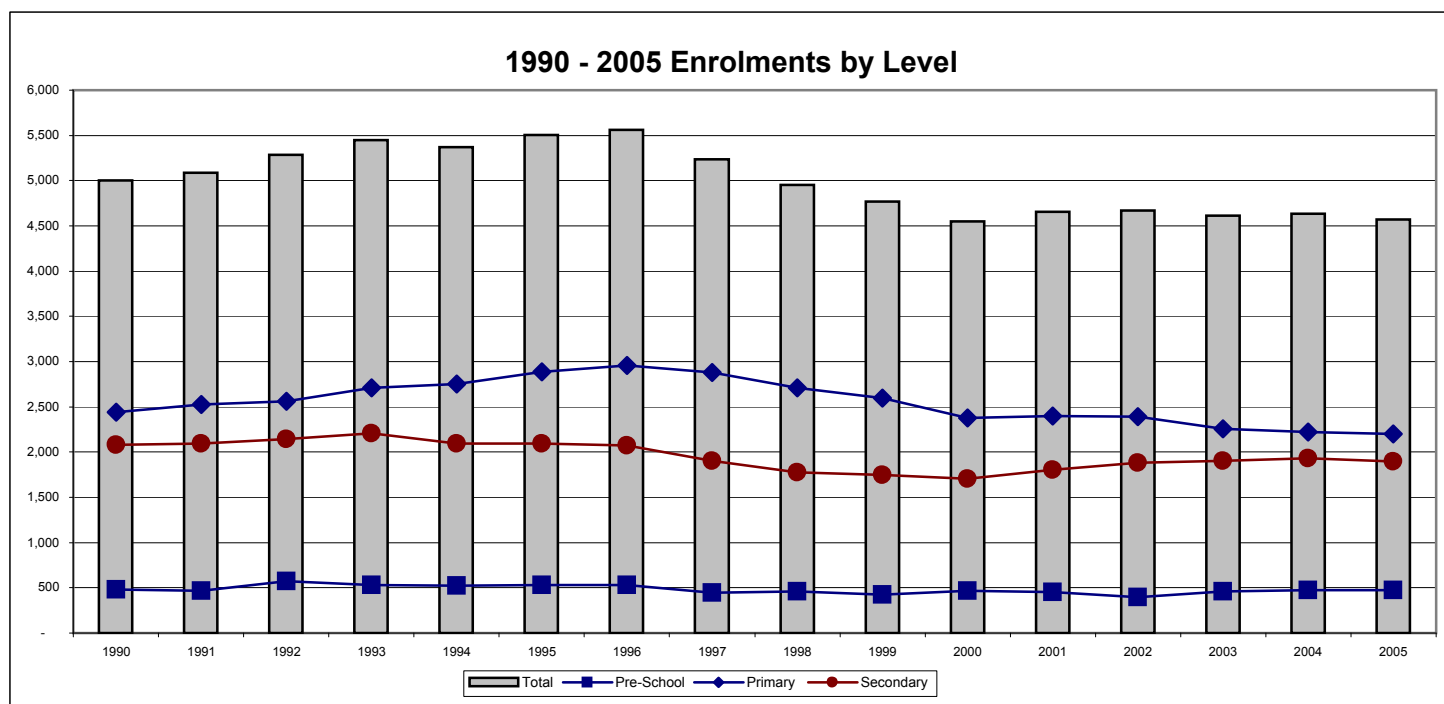
SCHOOL STATUS	1996	1997	1998	1999	2000	2001	2002	2003	2004	2005	1996/2005 Change	1996/2005 % Change	2004/2005 Change	2004/2005 % Change
Government	4763	4480	4219	4054	3861	3970	3928	3843	3829	3787	-976	-20%	-42	-1.1%
Non-government	797	755	731	713	687	687	740	769	802	786	-11	-1%	-16	-2.1%

1990-2005 ENROLMENTS BY LEVEL

Year	Pre-School	Primary	Secondary	Total
1990	480	2,442	2,082	5,004
1991	467	2,526	2,093	5,086
1992	575	2,564	2,143	5,282
1993	530	2,708	2,208	5,446
1994	527	2,750	2,094	5,371
1995	529	2,884	2,095	5,508
1996	530	2,956	2,074	5,560
1997	447	2,882	1,906	5,235
1998	460	2,711	1,779	4,950
1999	422	2,594	1,751	4,767
2000	465	2,379	1,704	4,548
2001	451	2,402	1,804	4,657
2002	399	2,388	1,881	4,668
2003	457	2,254	1,901	4,612
2004	472	2,225	1,934	4,631
2005	473	2,201	1,899	4,573
Average	480	2,554	1,959	4,994

Data for 1995 to 2005 is derived from the EMIS. Data from 1990 to 1994 is derived from the March Monthly School Returns.

Since 1996 there has been a 57(11%) decrease in preschool rolls, a 755(26%) decrease in primary rolls and a 175(8%) decrease in secondary rolls. The overall decrease since 1996 is 987(18%).



ENROLMENTS BY LEVEL AND GENDER

ISLAND	SCHOOL	Students				Pre-school		Primary		Secondary		Total	
		PreS	Prim	Sec	Total	Male	Female	Male	Female	Male	Female	Female	%Female
Aitutaki	Aitutaki SDA	11	49	0	60	8	3	26	23	0	0	26	43
	Araura College	0	0	251	251	0	0	0	0	119	132	132	53
	Araura Primary	30	142	0	172	15	15	67	75	0	0	90	52
	Vaitau Primary	6	76	0	82	3	3	41	35	0	0	38	46
Atiu	Enuamanu School	15	76	78	169	10	5	38	38	29	49	92	54
Mangaia	Ivirua Primary	10	20	0	30	5	5	8	12	0	0	17	57
	Mangaia School	14	86	91	191	6	8	40	46	45	46	100	52
	Tamarua Primary	5	7	0	12	3	2	5	2	0	0	4	33
Manihiki	Tauhunu High School	8	27	29	64	4	4	10	17	15	14	35	55
	Tukao Primary	2	20	19	41	0	2	14	6	11	8	16	39
Mauke	Mauke School	14	46	49	109	9	5	24	22	26	23	50	46
	St Mary's Primary	6	24	10	40	4	2	15	9	8	2	13	33
Mitiaro	Mitiaro High School	8	33	18	59	4	4	20	13	11	7	24	41
Nassau	Nassau Primary	3	26	17	46	2	1	16	10	11	6	17	37
Palmerston	Lucky School	4	18	5	27	1	3	11	7	2	3	13	48
Penryhn	Omoka High School	10	47	25	82	4	6	25	22	11	14	42	51
	Tetautua Primary	0	9	1	10	0	0	5	4	0	1	5	50
Pukapuka	Pukapuka High School	52	122	79	253	32	20	66	56	46	33	109	43
Rakahanga	Rakahanga High school	1	22	12	35	1	0	11	11	4	8	19	54
Rarotonga	Arorangi Primary School	17	93	33	143	12	5	44	49	16	17	71	50
	Avarua Primary	71	333	118	522	37	34	171	162	57	61	257	49
	Avatea Primary	0	261	117	378	0	0	130	131	63	54	185	49
	Blackrock Pre-school	25	0	0	25	10	15	0	0	0	0	15	60
	Imanuela Akademia School	4	31	19	54	2	2	18	13	9	10	25	46
	Nikao Primary	26	103	25	154	13	13	61	42	12	13	68	44
	Nukutere College	0	0	178	178	0	0	0	0	94	84	84	47
	Papaaroa College	0	56	25	81	0	0	29	27	13	12	39	48
	Rutaki Primary	15	58	0	73	8	7	40	18	0	0	25	34
	St Joseph's Primary	19	171	0	190	10	9	86	85	0	0	94	49
	Takitumu Primary	73	136	0	209	42	31	71	65	0	0	96	46
	Tereora College	0	0	507	507	0	0	0	0	262	245	245	48
	Te-Uki-Ou School	24	109	25	158	17	7	51	58	12	13	78	49
Titikaveka College	0	0	168	168	0	0	0	0	89	79	79	47	
Total		473	2201	1899	4573	262	211	1143	1058	965	934	2203	48

ISLAND	Students				Pre-school		Primary		Secondary		Total	
	PreS	Prim	Sec	Total	Female	%Female	Female	%Female	Female	%Female	Female	%Female
Aitutaki	47	267	251	565	21	45	133	50	132	53	286	51
Atiu	15	76	78	169	5	33	38	50	49	63	92	54
Mangaia	29	113	91	233	15	52	60	53	46	51	121	52
Manihiki	10	47	48	105	6	60	23	49	22	46	51	49
Mauke	20	70	59	149	7	35	31	44	25	42	63	42
Mitiaro	8	33	18	59	4	50	13	39	7	39	24	41
Nassau	3	26	17	46	1	33	10	38	6	35	17	37
Palmerston	4	18	5	27	3	0	7	39	3	60	13	48
Penryhn	10	56	26	92	6	60	26	46	15	58	47	51
Pukapuka	52	122	79	253	20	38	56	46	33	42	109	43
Rakahanga	1	22	12	35	0	0	11	50	8	67	19	54
Rarotonga	274	1351	1215	2840	123	45	650	48	588	48	1361	48
Total	473	2201	1899	4573	211	45	1058	48	934	49	2203	48

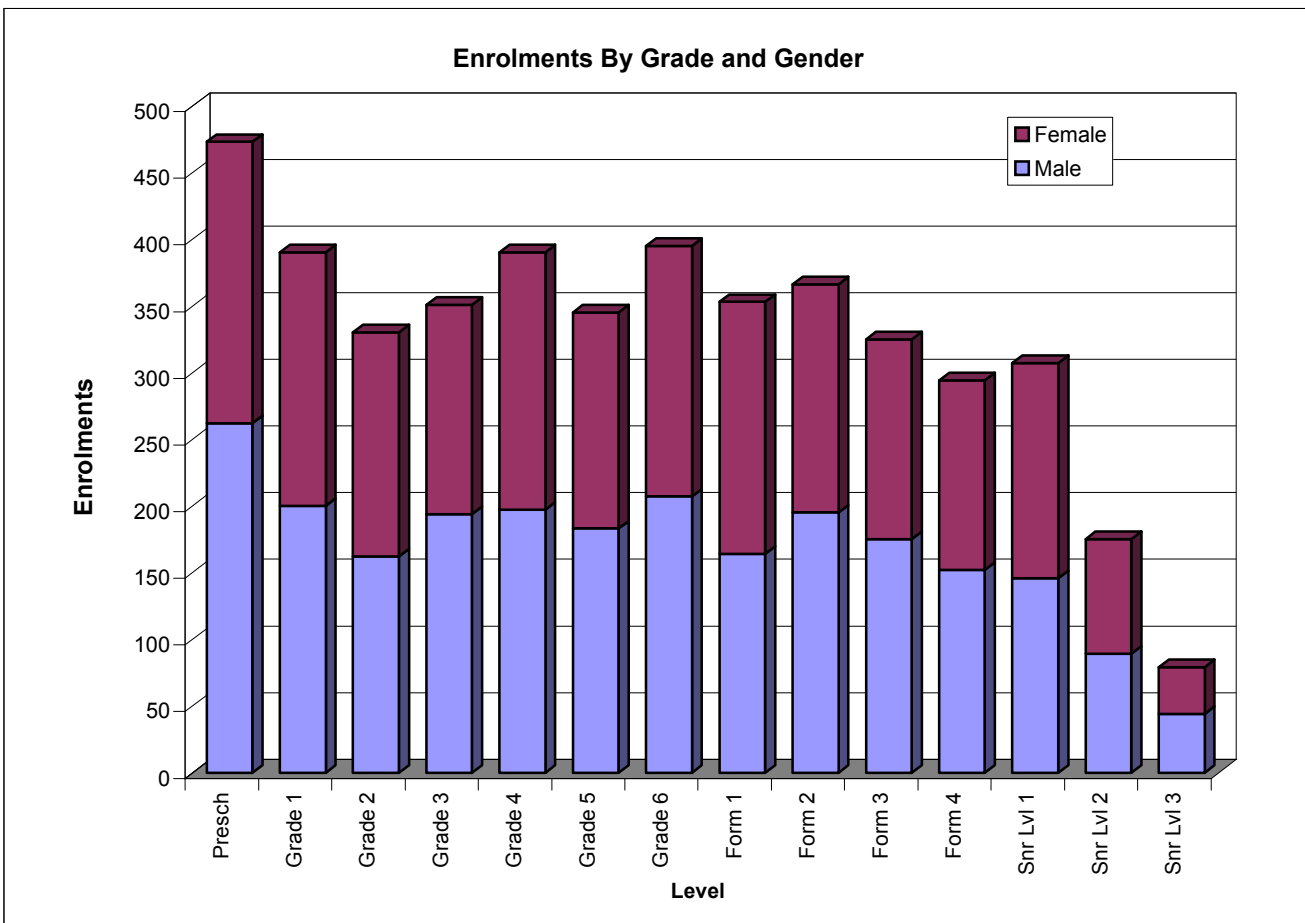
REGION	Students				Pre-school		Primary		Secondary		Total	
	PreS	Prim	Sec	Total	Female	%Female	Female	%Female	Female	%Female	Female	%Female
Northern Group	80	291	187	558	36	45	133	46	87	47	256	46
Rarotonga	274	1351	1215	2840	123	45	650	48	588	48	1361	48
Southern Group	119	559	497	1175	52	44	275	49	259	52	586	50
Total	473	2201	1899	4573	211	45	1058	48	934	49	2203	48

STATUS	Students				Pre-school		Primary		Secondary		Total	
	PreS	Prim	Sec	Total	Female	%Female	Female	%Female	Female	%Female	Female	%Female
Government	384	1761	1642	3787	168	44	859	49	798	49	1855	49
Non-government	89	440	257	786	43	48	199	45	136	53	348	44
Total	473	2201	1899	4573	211	45	1058	48	934	49	2203	48

ENROLMENTS BY GRADE AND GENDER

Grade/Form	Male	Female	%Female	Total
Presch	262	211	45	473
Grade 1	200	190	49	390
Grade 2	162	168	51	330
Grade 3	194	157	45	351
Grade 4	197	193	49	390
Grade 5	183	162	47	345
Grade 6	207	188	48	395
Form 1	164	189	54	353
Form 2	195	171	47	366
Form 3	175	150	46	325
Form 4	152	142	48	294
Snr Lvl 1	146	161	52	307
Snr Lvl 2	89	86	49	175
Snr Lvl 3	44	35	44	79
Total	2370	2203	48	4573

Girls make up 45% and 48% of the preschool and primary school (G1-G6) enrolment respectively. 49% secondary (F1-F7) students are girls with a slight lead at the senior secondary (SL1-F7) level accounting for 50.27% of the enrolment.



ENROLMENTS BY GRADE AND ISLAND

ISLAND	Schools	G1	G2	G3	G4	G5	G6	F1	F2	F3	F4	SL1	SL2	SL3	PreSch	Total
Aitutaki	4	54	39	32	40	52	50	45	52	40	51	51	12	0	47	565
Atiu	1	12	14	18	10	11	11	18	10	14	15	14	7	0	15	169
Mangaia	3	11	17	24	26	12	23	15	17	11	15	18	10	5	29	233
Manihiki	2	4	9	8	10	8	8	7	11	11	7	8	4	0	10	105
Mauke	2	6	16	13	15	10	10	9	10	12	15	13	0	0	20	149
Mitiaro	1	5	5	6	6	4	7	6	2	3	2	5	0	0	8	59
Nassau	1	10	1	4	3	2	6	4	3	4	6	0	0	0	3	46
Palmerston	1	6	3	2	5	0	2	3	1	1	0	0	0	0	4	27
Penrhyn	2	7	13	12	8	5	11	5	7	6	1	7	0	0	10	92
Pukapuka	1	23	15	26	22	15	21	18	14	19	15	9	4	0	52	253
Rakahanga	1	5	6	3	3	2	3	2	0	9	1	0	0	0	1	35
Rarotonga	14	247	192	203	242	224	243	221	239	195	166	182	138	74	274	2840
Total	33	390	330	351	390	345	395	353	366	325	294	307	175	79	473	4573

ENROLMENTS BY GRADE AND REGION

REGION	Schools	G1	G2	G3	G4	G5	G6	F1	F2	F3	F4	SL1	SL2	SL3	PreSch	Total
Nth Group	8	55	47	55	51	32	51	39	36	50	30	24	8	0	80	558
Rarotonga	14	247	192	203	242	224	243	221	239	195	166	182	138	74	274	2840
Sth Group	11	88	91	93	97	89	101	93	91	80	98	101	29	5	119	1175

ENROLMENTS BY GRADE AND SCHOOL STATUS

STATUS	Schools	G1	G2	G3	G4	G5	G6	F1	F2	F3	F4	SL1	SL2	SL3	PreSch	Total
Government	25	294	269	284	311	270	333	290	311	269	247	275	172	78	384	3787
Non-govt	8	96	61	67	79	75	62	63	55	56	47	32	3	1	89	786

STUDENT REPETITION RATES AT EACH GRADE

Year	Roll	REPEATERS		OVERAGE	
		Number	%	Number	%
Pre Sch	473	-	-	0	0
Grade 1	390	17	4.4	49	13
Grade 2	330	3	0.9	64	19
Grade 3	351	2	0.6	70	20
Grade 4	390	1	0.3	59	15
Grade 5	345	2	0.6	54	16
Grade 6	395	0	0.0	63	16
Form 1	353	1	0.3	51	14
Form 2	366	1	0.3	46	13
Form 3	325	0	0.0	42	13
Form 4	294	0	0.0	40	14
SL1	307	19	6.2	8	3
SL2	175	3	1.7	6	3
SL3	79	0	0.0	3	4
Total	4573	49	1.1	555	12

The overage data is based on the assumption that, on January 1, a Grade 1 student should be 5, a Grade 2 student should be 6 and each succeeding Grade student should be one year older. Those older than the assumed age for the grade are deemed to be overage. Compared to the year 2004 there has been an increase in overage students. Total numbers have increased from 479 to 555.

The number of students repeating at each level is directly recorded on each school's 2005 EMIS survey form by the school's principal.

ENROLMENTS BY GRADE/FORM

School	PreSch	Gr 1	Gr 2	Gr 3	Gr 4	Gr 5	Gr 6	F 1	F 2	F 3	F 4	SL1	SL2	SL3	Total
Blackrock Pre-school	25	0	0	0	0	0	0	0	0	0	0	0	0	0	25
Te-Uki-Ou School	24	19	15	17	20	23	15	13	12	0	0	0	0	0	158
Avarua Primary	71	43	47	55	69	56	63	54	64	0	0	0	0	0	522
Avatea Primary	0	26	26	41	53	54	61	52	65	0	0	0	0	0	378
Takitumu Primary	73	36	24	18	17	19	22	0	0	0	0	0	0	0	209
Nikao Primary	26	15	22	13	22	13	18	12	13	0	0	0	0	0	154
Rutaki Primary	15	15	7	6	10	11	9	0	0	0	0	0	0	0	73
St Joseph's Primary	19	47	22	24	23	26	29	0	0	0	0	0	0	0	190
Imanuela Akademia School	4	7	2	7	10	4	1	5	3	6	0	1	3	1	54
Arorangi Primary School	17	27	15	15	10	11	15	15	18	0	0	0	0	0	143
Tereora College	0	0	0	0	0	0	0	0	0	107	86	106	135	73	507
Titikaveka College	0	0	0	0	0	0	0	29	30	32	33	44	0	0	168
Nukutere College	0	0	0	0	0	0	0	34	27	42	44	31	0	0	178
Papaaroa College	0	12	12	7	8	7	10	7	7	8	3	0	0	0	81
Araura Primary	30	25	21	15	22	23	36	0	0	0	0	0	0	0	172
Vaitau Primary	6	20	11	10	8	18	9	0	0	0	0	0	0	0	82
Aitutaki SDA	11	9	7	7	10	11	5	0	0	0	0	0	0	0	60
Araura College	0	0	0	0	0	0	0	45	52	40	51	51	12	0	251
Ivirua Primary	10	4	3	2	4	3	4	0	0	0	0	0	0	0	30
Tamarua Primary	5	0	3	4	0	0	0	0	0	0	0	0	0	0	12
Mangaia School	14	7	11	18	22	9	19	15	17	11	15	18	10	5	191
Enuamanu School	15	12	14	18	10	11	11	18	10	14	15	14	7	0	169
St Mary's Primary	6	2	3	5	8	4	2	4	6	0	0	0	0	0	40
Mauke School	14	4	13	8	7	6	8	5	4	12	15	13	0	0	109
Mitiaro High School	8	5	5	6	6	4	7	6	2	3	2	5	0	0	59
Lucky Primary	4	6	3	2	5	0	2	3	1	1	0	0	0	0	27
Pukapuka High School	52	23	15	26	22	15	21	18	14	19	15	9	4	0	253
Nassau Primary	3	10	1	4	3	2	6	4	3	4	6	0	0	0	46
Tukao Primary	2	3	5	3	4	2	3	4	6	6	0	2	1	0	41
Tauhunu High School	8	1	4	5	6	6	5	3	5	5	7	6	3	0	64
Rakahanga High school	1	5	6	3	3	2	3	2	0	9	1	0	0	0	35
Tetautua Primary	0	2	0	3	0	0	4	1	0	0	0	0	0	0	10
Omoka High School	10	5	13	9	8	5	7	4	7	6	1	7	0	0	82
Total	473	390	330	351	390	345	395	353	366	325	294	307	175	79	4573

1990 - 2005 ENROLMENTS BY GRADE/FORM

Year	PreSch	Gr 1	Gr 2	Gr 3	Gr 4	Gr 5	Gr 6	F 1	F 2	F 3	F 4	F 5C	SL1	SL2	SL3	Total
1990	480	531	373	388	377	383	390	351	392	382	323	316	215	72	31	5,004
1991	467	567	392	408	402	390	367	387	357	364	337	318	221	85	24	5,086
1992	575	649	361	387	391	395	381	385	403	352	343	315	207	109	29	5,282
1993	530	745	408	387	389	386	393	406	380	381	324	315	243	108	51	5,446
1994	527	732	485	389	366	388	390	434	331	346	346	279	237	91	30	5,371
1995	529	736	488	460	430	368	402	369	408	370	306	324	202	96	20	5,508
1996	530	757	475	488	438	422	376	365	383	365	307	295	235	92	32	5,560
1997	447	733	433	442	444	445	385	329	343	335	298	272	215	90	24	5,235
1998	460	686	416	381	414	407	407	355	304	301	284	240	176	93	26	4,950
1999	422	667	405	397	367	381	377	359	314	277	267	222	183	96	33	4,767
2000	465	514	366	406	370	353	370	365	343	274	219	216	178	74	35	4,548
2001	451	504	411	385	374	377	351	353	363	333	244	200	179	110	22	4,657
2002	399	529	337	405	363	394	360	341	352	332	298	89	285	126	58	4,668
2003	457	392	371	351	399	354	387	354	332	323	313	0	325	181	73	4,612
2004	472	416	332	366	351	401	359	372	345	326	305	0	343	145	98	4,631
2005	473	390	330	351	390	345	395	353	366	325	294	0	307	175	79	4,573
Average	480	597	399	399	392	387	381	367	357	337	301	213	234	109	42	4,994

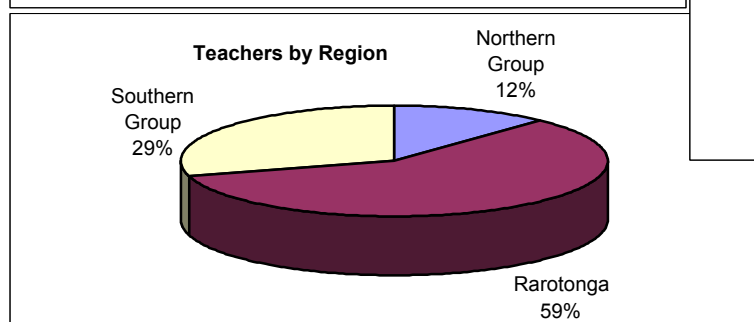
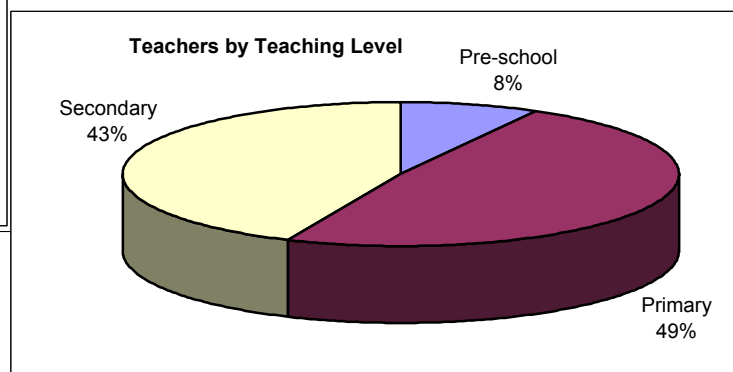
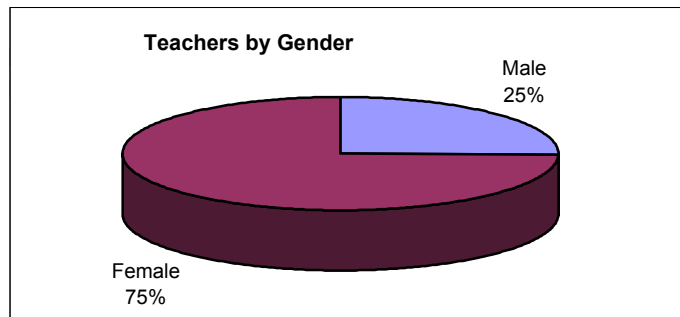
ENROLMENTS BY GRADE, AGE AND GENDER

Grade/Form	Total																Total
	4	5	6	7	8	9	10	11	12	13	14	15	16	17	18	19+	
Presch	440	33	0	0	0	0	0	0	0	0	0	0	0	0	0	0	473
Grade 1	88	253	46	1	2	0	0	0	0	0	0	0	0	0	0	0	390
Grade 2	0	71	195	60	4	0	0	0	0	0	0	0	0	0	0	0	330
Grade 3	0	0	84	197	67	3	0	0	0	0	0	0	0	0	0	0	351
Grade 4	0	0	3	75	253	53	6	0	0	0	0	0	0	0	0	0	390
Grade 5	0	0	0	0	33	258	53	0	0	1	0	0	0	0	0	0	345
Grade 6	0	0	0	0	0	48	284	60	2	1	0	0	0	0	0	0	395
Form 1	0	0	0	0	0	0	49	253	44	7	0	0	0	0	0	0	353
Form 2	0	0	0	0	0	0	4	63	253	44	2	0	0	0	0	0	366
Form 3	0	0	0	0	0	0	0	1	47	235	39	3	0	0	0	0	325
Form 4	0	0	0	0	0	0	0	0	0	39	215	40	0	0	0	0	294
Snr Level 1	0	0	0	0	0	0	0	0	0	1	35	206	57	8	0	0	307
Snr Level 2	0	0	0	0	0	0	0	0	0	0	1	20	100	48	6	0	175
Snr Level 3	0	0	0	0	0	0	0	0	0	0	0	0	12	40	24	3	79
Total	528	357	328	333	359	362	396	377	346	328	292	269	169	96	30	3	4573
Female																	
Grade/Form	4	5	6	7	8	9	10	11	12	13	14	15	16	17	18	19+	Total
Presch	197	14	0	0	0	0	0	0	0	0	0	0	0	0	0	0	211
Grade 1	40	125	22	1	2	0	0	0	0	0	0	0	0	0	0	0	190
Grade 2	0	35	108	25	0	0	0	0	0	0	0	0	0	0	0	0	168
Grade 3	0	0	39	82	34	2	0	0	0	0	0	0	0	0	0	0	157
Grade 4	0	0	0	44	121	26	2	0	0	0	0	0	0	0	0	0	193
Grade 5	0	0	0	0	20	127	14	0	0	1	0	0	0	0	0	0	162
Grade 6	0	0	0	0	0	33	131	23	0	1	0	0	0	0	0	0	188
Form 1	0	0	0	0	0	0	27	143	15	4	0	0	0	0	0	0	189
Form 2	0	0	0	0	0	0	4	39	108	20	0	0	0	0	0	0	171
Form 3	0	0	0	0	0	0	0	1	24	111	13	1	0	0	0	0	150
Form 4	0	0	0	0	0	0	0	0	0	21	105	16	0	0	0	0	142
Snr Level 1	0	0	0	0	0	0	0	0	0	1	24	109	23	4	0	0	161
Snr Level 2	0	0	0	0	0	0	0	0	0	0	1	12	44	26	3	0	86
Snr Level 3	0	0	0	0	0	0	0	0	0	0	0	0	8	16	9	2	35
Total	237	174	169	152	177	188	178	206	147	159	143	138	75	46	12	2	2203
Male																	
Grade/Form	4	5	6	7	8	9	10	11	12	13	14	15	16	17	18	19+	Total
Presch	243	19	0	0	0	0	0	0	0	0	0	0	0	0	0	0	262
Grade 1	48	128	24	0	0	0	0	0	0	0	0	0	0	0	0	0	200
Grade 2	0	36	87	35	4	0	0	0	0	0	0	0	0	0	0	0	162
Grade 3	0	0	45	115	33	1	0	0	0	0	0	0	0	0	0	0	194
Grade 4	0	0	3	31	132	27	4	0	0	0	0	0	0	0	0	0	197
Grade 5	0	0	0	0	13	131	39	0	0	0	0	0	0	0	0	0	183
Grade 6	0	0	0	0	0	15	153	37	2	0	0	0	0	0	0	0	207
Form 1	0	0	0	0	0	0	22	110	29	3	0	0	0	0	0	0	164
Form 2	0	0	0	0	0	0	0	24	145	24	2	0	0	0	0	0	195
Form 3	0	0	0	0	0	0	0	0	23	124	26	2	0	0	0	0	175
Form 4	0	0	0	0	0	0	0	0	0	18	110	24	0	0	0	0	152
Snr Level 1	0	0	0	0	0	0	0	0	0	0	11	97	34	4	0	0	146
Snr Level 2	0	0	0	0	0	0	0	0	0	0	0	8	56	22	3	0	89
Snr Level 3	0	0	0	0	0	0	0	0	0	0	0	0	4	24	15	1	44
Total	291	183	159	181	182	174	218	171	199	169	149	131	94	50	18	1	2370

TEACHERS

TEACHERS BY GENDER, TEACHING LEVEL AND NATIONALITY

STATUS	Teachers			Teaching Level			Nationality	
	Total	Female	%Female	Pre-school	Primary	Secondary	Cook-Is	%Cls.
Government	234	173	74	16	111	107	205	88
Non-government	48	38	79	7	26	15	33	69
Total	282	211	75	23	137	122	238	84

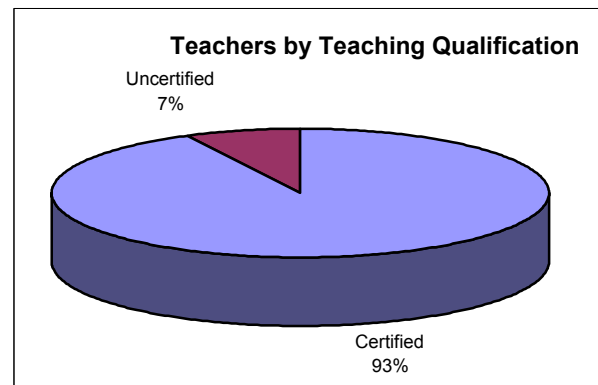
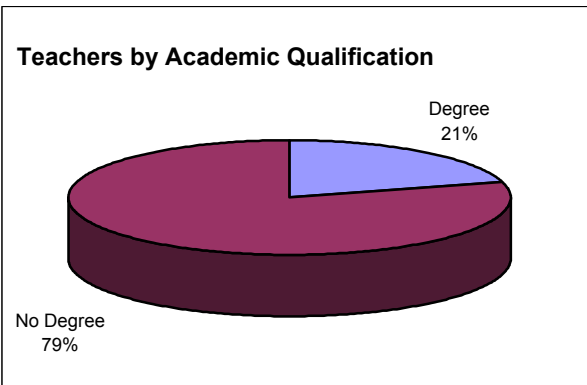


REGION	Teachers			Teaching Level			Nationality	
	Total	Female	%Female	Pre-school	Primary	Secondary	Cook-Is	%Cls.
Northern Group	34	21	62	4	19	11	28	82
Rarotonga	165	124	75	13	80	72	133	81
Southern Group	83	66	80	6	38	39	77	93

ISLAND	Teachers			Teaching Level			Nationality	
	Total	Female	%Female	Pre-school	Primary	Secondary	Cook-Is	%Cls.
Aitutaki	35	29	83	3	16	16	35	100
Atiu	12	9	75	1	5	6	10	83
Mangaia	17	12	71	1	9	7	15	88
Manihiki	8	5	63	1	4	3	6	75
Mauke	13	11	85	1	4	8	11	85
Mitiaro	6	5	83	0	4	2	6	100
Nassau	2	1	50	0	2	0	2	100
Palmerston	1	1	0	0	1	0	0	0
Penrhyn	6	3	50	1	4	1	4	67
Pukapuka	14	8	57	1	7	6	13	93
Rakahanga	3	3	100	1	1	1	3	100
Rarotonga	165	124	75	13	80	72	133	81

TEACHER QUALIFICATIONS

STATUS	Total Teachers	No. of Teachers with		No. of Teachers		% Teachers (with)	
		Degree	No Degree	Certified	Uncertified	Degree	Certified
Government	234	45	189	230	4	19	98
Non-government	48	13	35	31	17	27	65
Total	282	58	224	261	21	21	93



REGION	Total Teachers	No. of Teachers with		No. of Teachers		% Teachers (with)	
		Degree	No Degree	Certified	Uncertified	Degree	Certified
Northern Group	34	5	29	31	3	15	91
Rarotonga	165	40	125	150	15	24	91
Southern Group	83	13	70	80	3	16	96

ISLAND	Total Teachers	No. of Teachers with		No. of Teachers		% Teachers (with)	
		Degree	No Degree	Certified	Uncertified	Degree	Certified
Aitutaki	35	5	30	33	2	14	94
Atiu	12	1	11	11	1	8	92
Mangaia	17	2	15	17	0	12	100
Manihiki	8	2	6	8	0	25	100
Mauke	13	3	10	13	0	23	100
Mitiaro	6	2	4	6	0	33	100
Nassau	2	0	2	2	0	0	100
Palmerston	1	1	0	1	0	0	0
Penrhyn	6	1	5	6	0	17	100
Pukapuka	14	1	13	13	1	7	93
Rakahanga	3	0	3	1	2	0	33
Rarotonga	165	40	125	150	15	24	91

Note:

1. Certified teachers are those with a Teachers College Certificate or Diploma.
2. The number of teachers with degrees and certified to teach are as reported by Principals and are not derived from a file check of verified qualifications held by the Ministry of Education.

STUDENT : TEACHER RATIOS

STATUS	Number of Teachers			Total Students	S : T RATIOS		
	Male	Female	Total		2005	2004	Change
Government	61	173	234	3787	16.2	16.6	-0.4
Non-government	10	38	48	786	16.4	14.6	1.8
Total	71	211	282	4573	16.2	16.2	0.0

REGION	Number of Teachers			Total Students	S : T RATIOS		
	Male	Female	Total		2005	2004	Change
Northern Group	13	21	34	558	16.4	16.9	-0.5
Rarotonga	41	124	165	2840	17.2	16.8	0.4
Southern Group	17	66	83	1175	14.2	14.8	-0.6
Total	71	211	282	4573	16.2	16.2	0.0

ISLAND	Number of Teachers			Total Students	S : T RATIOS		
	Male	Female	Total		2005	2004	Change
Aitutaki	6	29	35	565	16.1	15.8	0.3
Atiu	3	9	12	169	14.1	16.3	-2.2
Mangaia	5	12	17	233	13.7	13.1	0.6
Manihiki	3	5	8	105	13.1	16.9	-3.8
Mauke	2	11	13	149	11.5	12.7	-1.2
Mitiaro	1	5	6	59	9.8	14.6	-4.8
Nassau	1	1	2	46	23.0	17.5	5.5
Palmerston	0	1	1	27	27.0	26.0	1.0
Penrhyn	3	3	6	92	15.3	12.0	3.3
Pukapuka	6	8	14	253	18.1	21.2	-3.1
Rakahanga	0	3	3	35	11.7	10.7	1.0
Rarotonga	41	124	165	2840	17.2	16.8	0.4
Total	71	211	282	4573	16.2	16.2	0.0

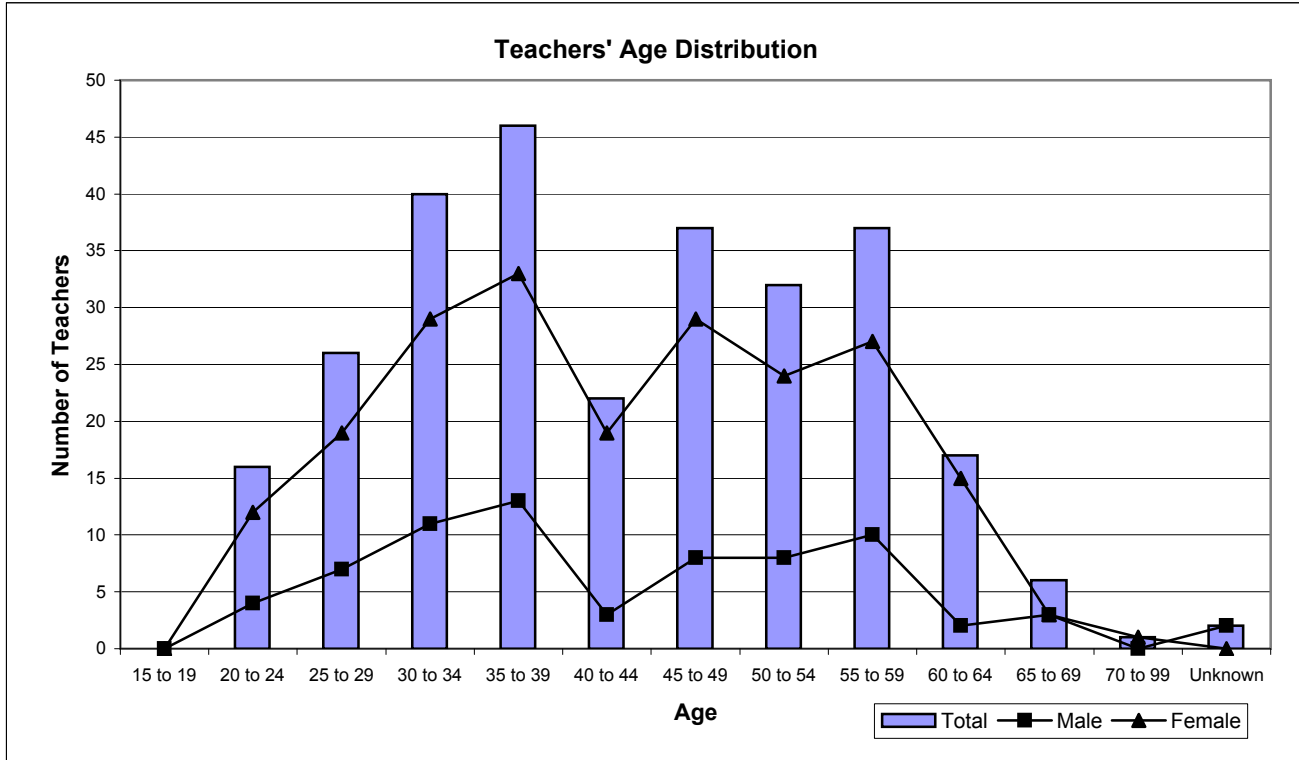
Note: Teacher numbers include principals and senior teachers.

STUDENT : TEACHER RATIOS (contd)

SCHOOL	Teachers						S : T RATIO			
	Pre-sch	Primary	Secondary	Male	Female	Total	Pre-sch	Primary	Secondary	Total
Aitutaki SDA	1	3	0	0	4	4	11	16	-	15
Araura College	0	0	16	5	11	16	-	-	16	16
Araura Primary	1	9	0	1	9	10	30	16	-	17
Arorangi Primary School	1	7	2	2	8	10	17	13	17	14
Avarua Primary	2	18	5	4	21	25	36	19	24	21
Avatea Primary	0	16	5	2	19	21	-	16	23	18
Blackrock Pre-school	1	0	0	0	1	1	25	-	-	25
Enuamanu School	1	5	6	3	9	12	15	15	13	14
Imanuela Akademia School	0	3	1	1	3	4	-	10	19	14
Ivirua Primary	0	3	0	1	2	3	-	7	-	10
Lucky Primary	0	1	0	0	1	1	-	18	-	27
Mangaia School	1	5	7	4	9	13	14	17	13	15
Mauke School	0	2	7	2	7	9	-	23	7	12
Mitiaro High School	0	4	2	1	5	6	-	8	9	10
Nassau Primary	0	2	0	1	1	2	-	13	-	23
Nikao Primary	1	7	1	2	7	9	26	15	25	17
Nukutere College	0	0	9	5	4	9	-	-	20	20
Omoka High School	1	3	1	3	2	5	10	16	25	16
Papaaroa College	0	3	3	1	5	6	-	19	8	14
Pukapuka High School	1	7	6	6	8	14	52	17	13	18
Rakahanga High school	1	1	1	0	3	3	1	22	12	12
Rutaki Primary	1	3	0	0	4	4	15	19	-	18
St Joseph's Primary	1	8	0	1	8	9	19	21	-	21
St Mary's Primary	1	2	1	0	4	4	6	12	10	10
Takitumu Primary	3	8	0	0	11	11	24	17	-	19
Tamarua Primary	0	1	0	0	1	1	-	7	-	12
Tauhunu High School	1	2	1	1	3	4	8	14	29	16
Tereora College	0	0	35	16	19	35	-	-	14	14
Tetautua Primary	0	1	0	0	1	1	-	9	-	10
Te-Uki-Ou School	3	7	1	2	9	11	8	16	25	14
Titikaveka College	0	0	10	5	5	10	-	-	17	17
Tukao Primary	0	2	2	2	2	4	-	10	10	10
Vaitau Primary	1	4	0	0	5	5	6	19	-	16
Total	23	137	122	71	211	282	21	16	16	16

AGE DISTRIBUTION OF TEACHERS

Age Range	Total	Male	Female	%Female	Total %
15 to 19	0	0	0	0	0
20 to 24	16	4	12	75	6
25 to 29	26	7	19	73	9
30 to 34	40	11	29	73	14
35 to 39	46	13	33	72	16
40 to 44	22	3	19	86	9
45 to 49	37	8	29	78	14
50 to 54	32	8	24	75	11
55 to 59	37	10	27	73	13
60 to 64	17	2	15	88	7
65 to 69	6	3	3	50	1
70 to 99	1	0	1	100	0
Unknown	2	2	0	0	0
Total	282	71	211	75	



2004/2005 TEACHER COMPARISONS

Teachers	2004	2005	Change	% Change
Total	285	282	-3	-1
Male	75	71	-4	-6
Female	210	211	1	0
Cook Islanders	240	238	-2	-1
Non-Cook Islanders	45	44	-1	-2
Trained Teachers Cert	252	261	9	3
Tchrs with a Degree	64	58	-6	-10

SCHOOL BUILDINGS AND FACILITIES

SCHOOL CAPACITY

STATUS	Schools	Students	Teachers	Classrooms	S:C Ratio
Government	25	3787	234	249	15
Non-government	8	786	48	44	18
Total	33	4573	282	293	16

Note: Classrooms exclude specialist rooms.

S:C Ratio - number of students per class.

REGION	Schools	Students	Teachers	Classrooms	S:C Ratio
Northern Group	8	453	26	38	12
Rarotonga	14	2840	165	150	19
Southern Group	11	1280	91	105	12

ISLAND	Schools	Students	Teachers	Classrooms	S:C Ratio
Aitutaki	4	565	35	37	15
Atiu	1	169	12	20	8
Mangaia	3	233	17	27	9
Manihiki	2	105	8	9	12
Mauke	2	149	13	14	11
Mitiaro	1	59	6	7	8
Nassau	1	46	2	2	23
Palmerston	1	27	1	1	27
Penrhyn	2	92	6	8	12
Pukapuka	1	253	14	12	21
Rakahanga	1	35	3	6	6
Rarotonga	14	2840	165	150	19

SELECTED BUILDINGS

BUILDING	2005				Changes from 2004			
	Total	Good	To Repair	Area(sq.m)	Total	Good	To Repair	Area(sq.m)
Classroom	293	164	129	27116	-2	1	-3	3216
Office	58	38	20	1409	-1	-1	0	-75
Workshop	13	6	7	1118	1	1	0	-1368
Home/Ec.	13	6	7	784	0	0	0	-614
Science Lab	15	7	8	1000	-1	-1	0	-477
Hall	11	7	4	4029	0	0	0	0
Staffroom	24	14	10	1309	0	-1	1	-726
Library	34	23	11	2502	0	0	0	-730

SELECTED APPARATUS IN ALL SCHOOLS

APPARATUS	2004	2005	Change
Duplicator	8	8	0
Photocopier	48	45	-3
Typewriter	46	32	-14
Computer	259	264	5
Radio	62	74	12
Television/Video	30	31	1
Overhead projector	25	28	3

SELECTED FURNITURE IN ALL SCHOOLS

Type of Furniture	2005			Change from 2004		
	Total	Good	To Repair	Total	Good	To Repair
Desk/Table	4304	3897	407	163	194	-31
Chair/Form	5241	4486	755	112	142	-30
Workbench	333	263	70	-59	-66	7
Blackboard	435	376	59	2	19	-17