

# TONGA 2016 HIES - Main figures

Major monthly household spending

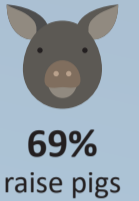
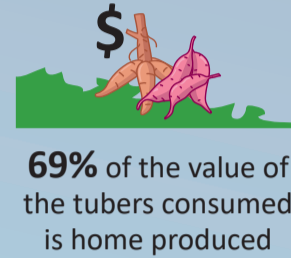
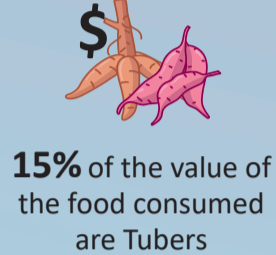


Average monthly total: Income: <sup>TOP</sup>2,710 - Expenditure: <sup>TOP</sup>2,540

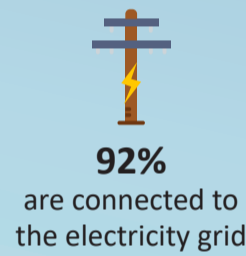
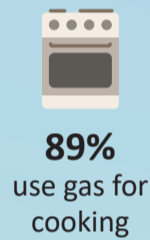
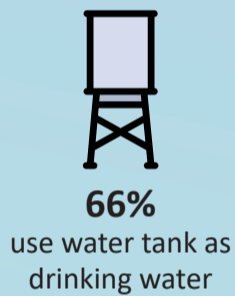
## 33% FOOD & NON-ALCOHOLIC BEVERAGE

80% FOOD CONSUMED ARE PURCHASED

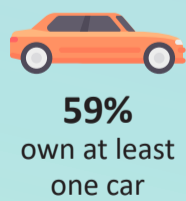
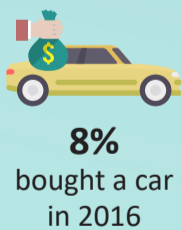
<sup>TOP</sup> 670 TO BUY FOOD



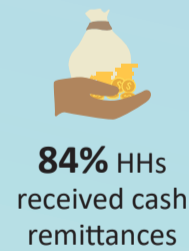
## 20% HOUSING, WATER, ELECTRICITY, GAS



## 13% TRANSPORT



## 11% CASH TRANSFER



## 7% ALCOHOL, KAVA, TOBACCO



## 4% COMMUNICATION (Pop. 10+)

