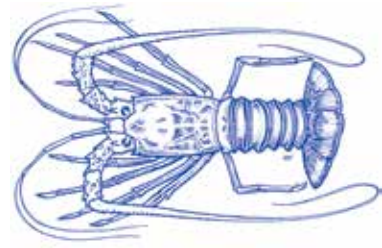


# Naora blong solwota

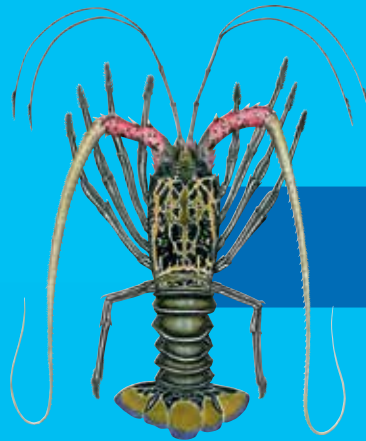
Spiny lobster  
(Palinuridae)



**Straep leg naora**  
Stripe-leg spiny lobster  
(*Panulirus longipes spinosus*)



**Blu hon naora**  
Pronghorn spiny lobster  
(*Panulirus penicillatus*)



**Kala spaeni naora**  
Painted spiny lobster  
(*Panulirus versicolor*)



## Spisis mo distribiusen

Spiny lobster o naora blong solwota i no olsem ol tru naora we oli gat ol bigfala han. Oli stap nomo long ol solwota we i hot smol. Ol spisis we i intres blong olgeta long ol aelan blong Pasifik hemi ol naora we oli blong genus grup ia *Panulirus*.

I kat sikis spisis long Solomon Aelan, be wan nomo aot long olgeta, we oli kolek pronghorn spiny lobster, *Panulirus penicillatus*, oli stap kasem long ol aelan blong is blong Polynesia. Long Papua New Guinea, oli kasem ornate lobster, *Panulirus ornate*; be men spisis we oli stap kasem long Pasifik hemi pronghorn spiny lobster wetem smol namba blong stripe-leg spiny lobster, *Panulirus longipes spinosus*. Long Vanuatu i gat fo difren kaen naora, i gat pronghorn spiny lobster (*Panulirus penicillatus*), stripe-leg spiny lobster (*Panulirus longipes spinosus*), mo painted spiny lobster (*Panulirus versicolor*). Konom spisis we i stap tru aot long ol maket blong Vanuatu hemi spiny lobster *Panulirus penicillatus*. Long ol nara aelan blong Pasifik painted spiny lobster (*Panulirus versicolor*) hemi no impoten tumas.

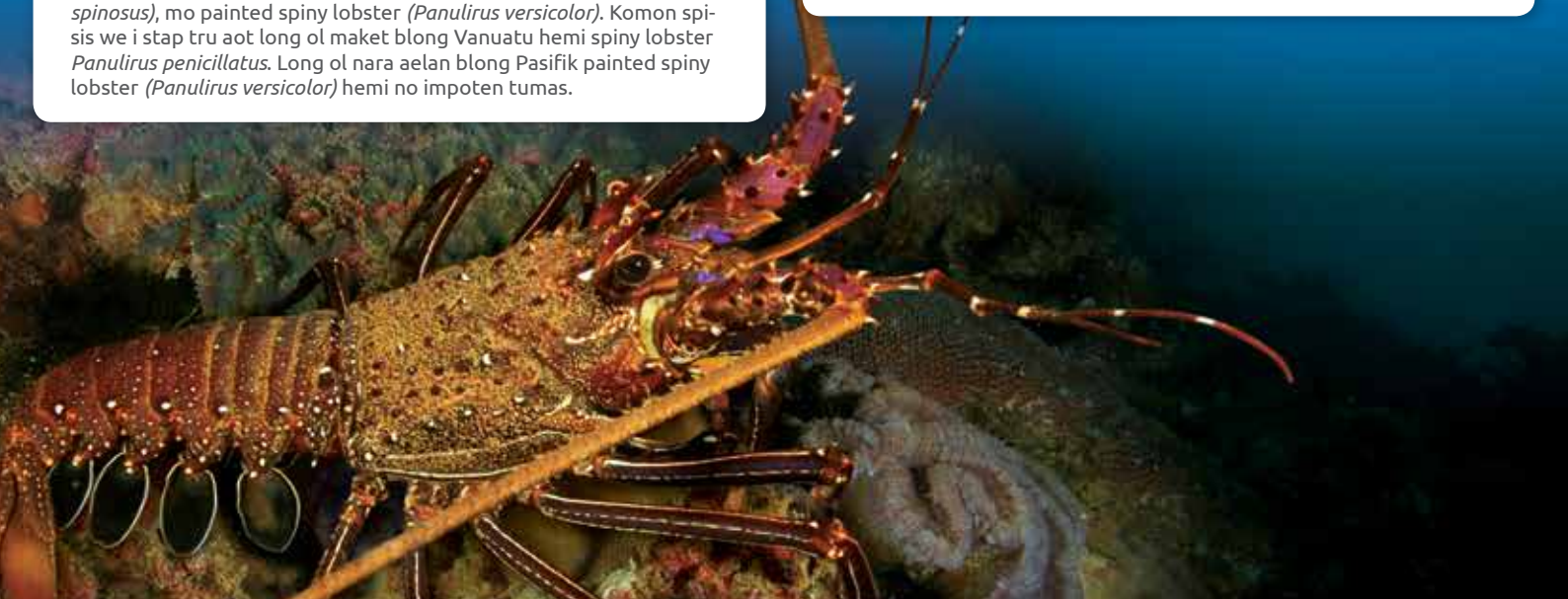


## Ples we naora i stap long hem mo kakae blong hem

**Naora blong solwota oli stap laef insaed long ol hol blong rif mo oli stap muv aot long naet blong kakae.**

Ol pronghorn spiny lobster oli stap laef long ples we solwota i stap brok mo oli muv i go long ol rif flat blong faenem kakae. Ol stripe-leg lobster oli stap laef long ol dip wota mo painted spiny lobster oli stap laef long ol ples blong korel mo tu long ol dip wota aotsaed long ol rif slop. Ol ornate lobster oli faenem long ol salo lagun go kasem lagun rif we i lid i go long aotsaed.

Ol naora oli kakae ol si snel, natalae, krab, si-kukamba, ol plant blong rif (korelaen nalumlum) mo ol ded animol. Be ol bigfala fis, olsem sak mo ol nawita oli stap kakae ol naora.

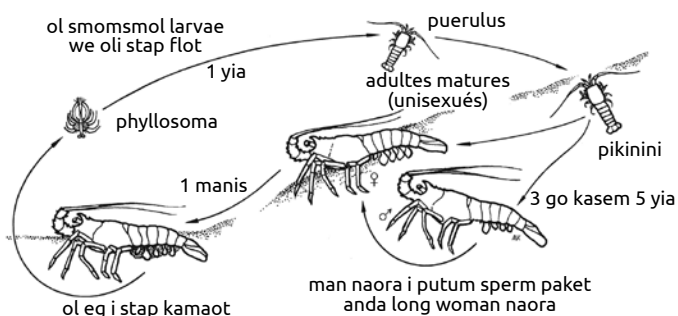




## Riprodaksen mo saekol blong laef

*Ol defren spisis blong ol naora blong Pasifik laef saekol blong olgeta i klosap sem mak nomo. Olgeta oli gat seperet seks, minim se i gat woman naora mo man naora, mo, from i dipen long spisis mo ples we hemi stap, oli save kasem saes blong mekem pikinini taem oli kasem 80 mm, hemia i longfala blong sel blong hed blong hem. Ol naora oli save kam bigwan finis long 3 go kasem 5 yia mo oli save laef kasem 10 yia.*

Plante spisis oli mekem pikinini truot long yia, mo samtaem ol aktiviti blong mekem pikinini i save go antap long ol manis we i hot mo long wan yia. Wan man naora (♂) i putum paket blong sperm (spermatophore) i go long andanit blong woman naora (♀). Ol woman oli rilisim plante taosen eg we oli fetalaes taem oli pas ova long sperm packet ia. Ol eg we oli fetalaes oli stap long woman naora blong wan manis bifo oli brok mo ol smolsmol larvae oli kam aot. Oli flot long solwota blong wan yia o mo. Aot long evri taosen blong ol smolsmol larvae, anda long wan i save laef blong stap long botom blong solwota olsem wan pikinini naora. Mo, aot long evri 100 pikinini naora, anda long wan i save kam wan bigfala naora we i save mekem pikinini.



## Ol kaen fasin blong manejen we yu save jusum

Long Vanuatu minimam saes blong naora we i stap anda long rul blong fiseriss hemi 22 sentimita, stat klosap long tufala hon blong hem kasem en blong tel blong hem. I gud tumas blong gat ol nasonal saes limit sapos oli save jekem ol naora we oli kasem long fiu maket ples nomo.

Regiulesen blong fiseriss blong Vanuatu hemi no alaom ol fisa blong tekem, givim kil, karem wetem hem o salem eni naora we i gat eg o blong pem naora we oli karem eg blong hem, o eksptem naora o krab we daerakta blong fiseriss i no otoraesen. Ol faen blong brekem ol loa ia hemi 1,000,000 VT long wan kampani mo 200,000 VT long wanwan man.

Manejmen blong naora long ol komiuniti hemi blong putum tabu long haves blong naora. Be blong mekem populesen blong naora i kam antap plante i nid blong plante komuniti long wan aelan oli setemap ol tabu eria. Hemia i from ol smolsmol larvae blong naora i save flot longtaem (samtaem ova long wan yia) long solwota bifo oli save setel long wan rif. I minim se maet ol pikinini blong ol naora blong wan rif i no save kambak blong stap long rif we mama blong hem i stap long hem mo oli go setel long wan nara rif.

Sapos wan atol o wan komiuniti blong wan smol aelan i tekem aksen blong manejen fiseriss blong naora blong hem, i mas gat benefit long ol lokol fisa. Be sapos wan nomo aot long ol komiuniti long wan longfala kos i tekem ol manejen aksen, ol namba blong ol naora i save go daon yet, sapos namba blong ol naora blong ol nara komiuniti we oli stap klosap i bin go daon. Long sitiuesen olsem, i gud tumas sapos plante lokol komiuniti i save wok wanples mo agri long ol sem mak fasin blong manejen.

Blong sapotem ol nasonal fasin blong manejen, ol komiuniti i save mekem olsem:

- Putum wan limit long hamas kilo komiuniti i save havestem. Wan gudfala limit hemi 20 kg blong naora long wan kilomita blong rif blong wan yia.
- No karem naora long wan rif nomo evri taem, go long ol nara rif blong karem naora tu blong mekem se namba blong naora long ol rif ia i no go daon tumas, olsem rotetem haves blong naora long ol olgeta difren rif.
- putum wan ban blong no tekem ol smol naora we i no folem loa blong fiseris (olsem enfosem fisaris regiulesen blong minimam saes limit);
- Stopem yus blong ekwipmen blong pulum win blong daeva anda long solwota;
- topem yus blong spia. Sapos oli karem naora wetem han nomo hemi minim se oli no tekem ol smol naora, from ol laef naora i gat mo valu bitim ol ded wan.
- blokem olgeta blong no tekem ol woman naora we oli karem eg.



## Fasin blong kasem naora

*Long plante aelan long Pasifik, men fasin blong fising we oli stap yusum hemi blong kolektem naora wetem han o blong daeva fri long naet wetem toslaet.*

Sam naora oli tekem wetem spia, mo, sori blong talem, samtaem oli yusum ol tul blong pulum win anda long solwota olsem SCUBA.

Plante bigfala operesen blong kasem naora long ol aelan blong Pasifik oli no wokaot gud from ol men spisis oli stap long wan lo kwantiti long wanwan ples mo olgeta oli no stap laekem blong kam insaed long ol trap o pot (wan eksepsen hemi spiny lobster blong Hawaii). Hemi impoten tumas blong kipim ol fising blong naora i stap nomo blong ol lokol pipol we oli save salem long ol lokol maket.



Gaed mo ol toksave ia hemi wok blong SPC ([www.spc.int](http://www.spc.int)) we i wok tugeta wetem LMMA ([www.lmmanetwork.org](http://www.lmmanetwork.org)) blong helpem pipol we oli wok wetem ol fising komiuniti blong givim advaes long ol defren mo gud fiseris manejen joes. Blong kat mo ekspleneson long ol toktok we istap insaed long Gaed mo ol toksave ia, yu save luk long gaed buk. Foto : Mathieu Juncker



Pacific  
Community  
Communauté  
du Pacifique

The Locally-Managed Marine Area (LMMA) Network



Improving the practice of marine conservation



UNION EUROPÉENNE