

DGP *Diagramma pictum*

Haemulidae / Grunts

Painted sweetlips



Adults bluish-grey with dark scattered blotches on body and faint spots on body and fins that fade with age. Sub-adults (shown) paler with **1** numerous gold spots on body and fins.

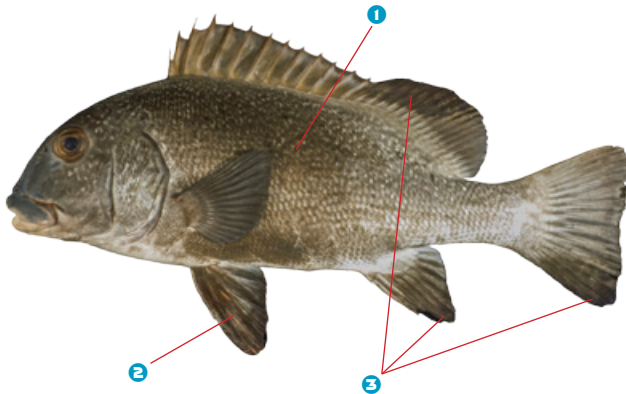
Max length: 100 cm FL

AS	CK	FJ	FM	GU	KI
MH	MP	NC	NR	NU	PF
PG	PN	PW	SB	TK	TO
TV	VU	WF	WS		

PBX *Plectorhinchus albovittatus*

Haemulidae / Grunts

Two-striped sweetlips, giant sweetlips



Grey with **1** faint wide dark bar behind pectoral fins (faded in this image). **2** Black pelvic fins and **3** black margins on soft dorsal, anal and caudal fins.

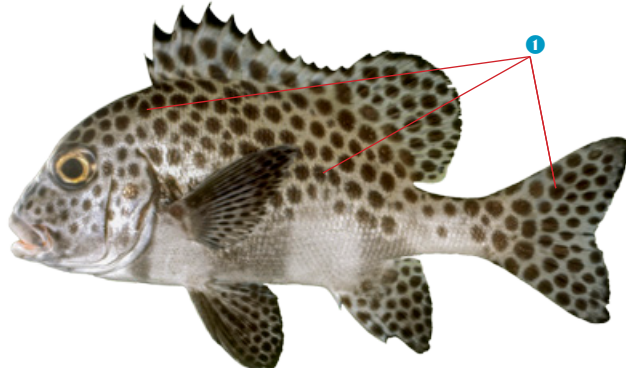
Max length: 100 cm TL

AS	CK	FJ	FM	GU	KI
MH	MP	NC	NR	NU	PF
PG	PN	PW	SB	TK	TO
TV	VU	WF	WS		

PBX *Plectorhinchus chaetodonoides*

Haemulidae / Grunts

Harlequin sweetlips, many-spotted sweetlips



Adults pale green on upper body to light grey on lower body with **1** numerous large, close-set black spots on head, body and fins.

Max length: 70 cm FL

AS	CK	FJ	FM	GU	KI
MH	MP	NC	NR	NU	PF
PG	PN	PW	SB	TK	TO
TV	VU	WF	WS		

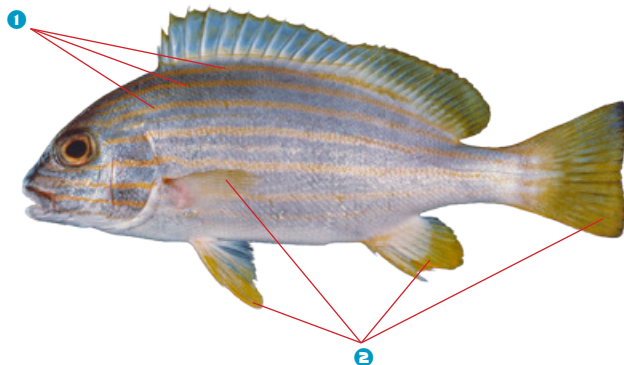
Similar to *Plectorhinchus picus* but lacks black margin on gill covers (present in *P. picus*) and has much larger spots.

Yellow-striped sweetlips

Silvery-blue with **1** numerous horizontal yellow stripes on head and body. **2** Fins bright yellow.

Max length: 50 cm FL

AS	CK	FJ	FM	GU	KI
MH	MP	NC	NR	NU	PF
PG	PN	PW	SB	TK	TO
TV	VU	WF	WS		

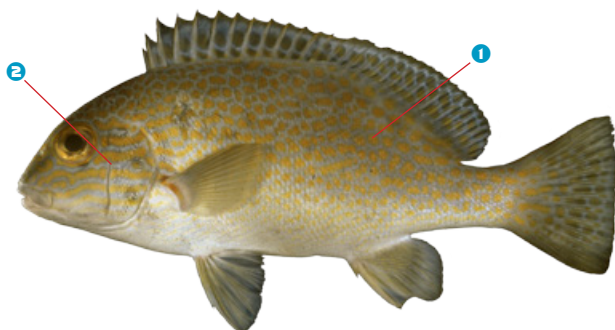


Lemonfish, gold-spotted sweetlips

Grey with **1** gold spots on body and dorsal and caudal fins, joining as **2** wavy lines on head.

Max length: 60 cm TL

AS	CK	FJ	FM	GU	KI
MH	MP	NC	NR	NU	PF
PG	PN	PW	SB	TK	TO
TV	VU	WF	WS		



Harry hotlips, blubberlip

Dark grey to brown body and **1** fins, with charcoal-grey head. **2** Dark outlines around scales and **3** black margin on cheeks and gill covers.

Max length: 70 cm TL

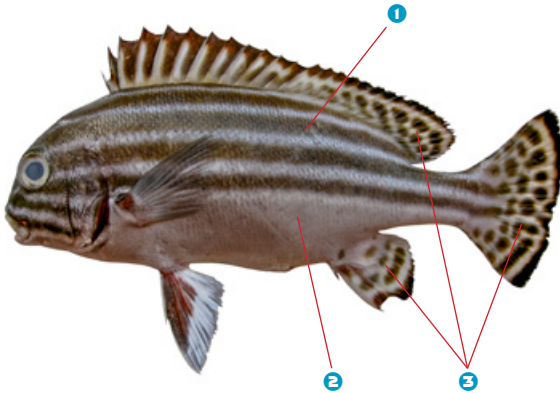
AS	CK	FJ	FM	GU	KI
MH	MP	NC	NR	NU	PF
PG	PN	PW	SB	TK	TO
TV	VU	WF	WS		



GFH *Plectorhinchus lessonii*

Haemulidae / Grunts

Lesson's thicklip, striped sweetlips



1 White with 4–5 horizontal blackish-brown stripes on head, upper body and 2 white unmarked lower body. 3 Black spots on dorsal, anal and caudal fins.

Max length: 40 cm TL

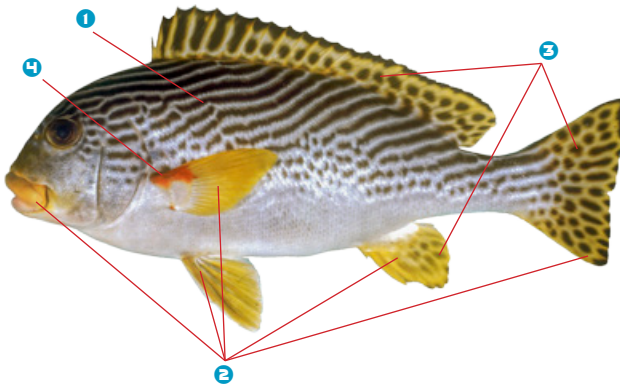
AS	CK	FJ	FM	GU	KI
MH	MP	NC	NR	NU	PF
PG	PN	PW	SB	TK	TO
TV	VU	WF	WS		

Photo: CSIRO Australian National Fish Collection

IEY *Plectorhinchus lineatus*

Haemulidae / Grunts

Yellowbanded sweetlips



Grey upper body to white lower body with 1 numerous diagonal black stripes breaking into spots ventrally. 2 Lips and fins yellow. 3 Black spots on dorsal, anal and caudal fins, and 4 large red spot at upper base of pectoral fins.

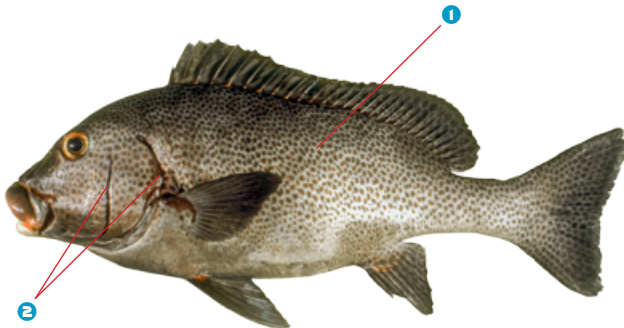
Max length: 60 cm TL

AS	CK	FJ	FM	GU	KI
MH	MP	NC	NR	NU	PF
PG	PN	PW	SB	TK	TO
TV	VU	WF	WS		

PBX *Plectorhinchus picus*

Haemulidae / Grunts

Painted sweetlip, dotted sweetlips



Grey to greenish-white with 1 numerous small black spots on head and body, and dorsal, anal and caudal fins. 2 Black margin on rear of gill covers.

Max length: 80 cm FL

AS	CK	FJ	FM	GU	KI
MH	MP	NC	NR	NU	PF
PG	PN	PW	SB	TK	TO
TV	VU	WF	WS		

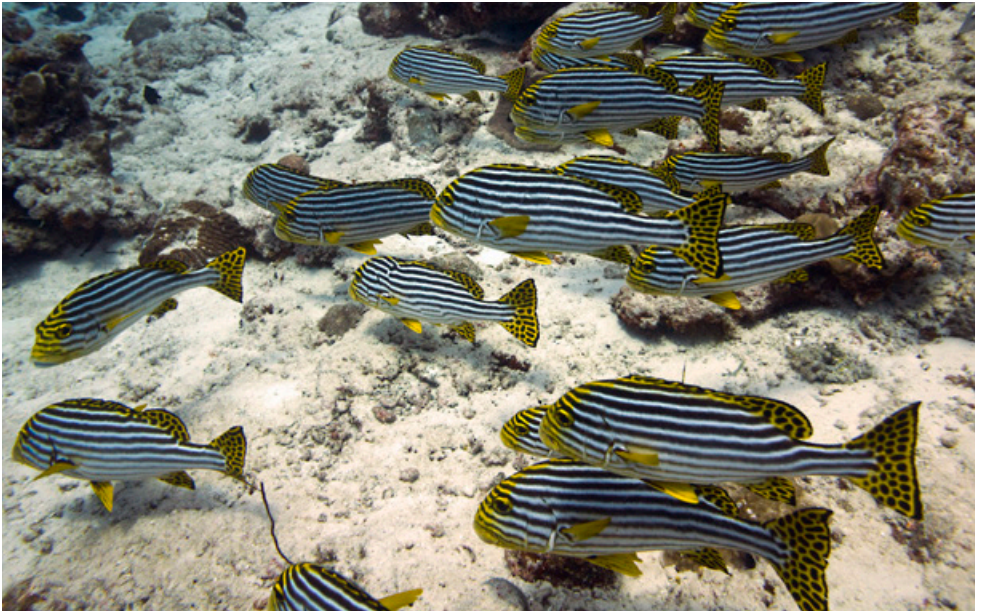
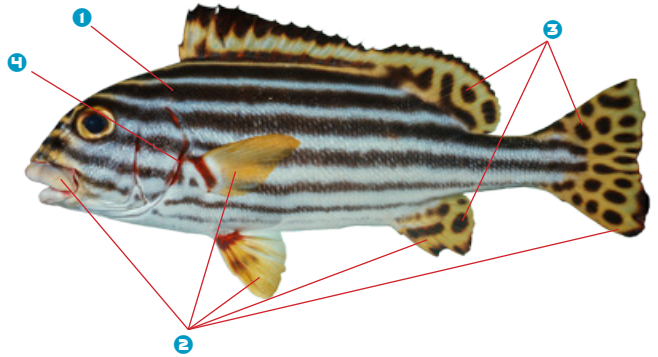
Similar to *Plectorhinchus chaetodonoides* but with much smaller spots and black margin on gill covers (spots are larger and black margin is absent in *P. chaetodonoides*).

Oriental sweetlips

White with ❶ numerous horizontal black stripes on head and body. ❷ Lips and fins yellow. ❸ Black spots on dorsal, anal and caudal fins. ❹ Areas of red around gill covers and base of pectoral and pelvic fins.

Max length: 70 cm TL

AS	CK	FJ	FM	GU	KI
MH	MP	NC	NR	NU	PF
PG	PN	PW	SB	TK	TO
TV	VU	WF	WS		



A school of oriental sweetlips, *Plectorhinchus vittatus*, Maldives.

Photo: Malcolm Browne, Flickr