

'IKA I HE MATAFANGA 'O TONGA

Common reef food fish of Tonga



Habitat: More common in lagoons and bays than exposed outer reef areas. 1-90 m.
Max. recorded size: 56 cm.
Food: Benthic algae, including the fine film of diatoms and detritus on sand.

Acanthurus xanthopterus
Palangi • Yellowfin surgeonfish



Habitat: Reef flats, and lagoon and seaward reefs. 0-30 m.
Max. recorded size: 26 cm.
Food: Surface film of blue-green algae and diatoms, and small invertebrates.

Ctenochaetus striatus
Pone • Striated surgeonfish



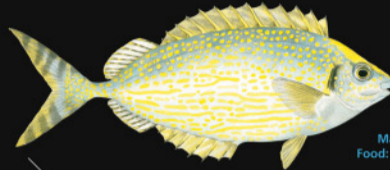
Habitat: Channels, moats, lagoon and seaward reefs with strong surge. 1-180 m.
Max. recorded size: 70 cm.
Food: Mainly leafy brown algae. Mostly diurnal feeder.

Naso unicornis
'Ume kaki • Bluespine unicornfish



Habitat: Mostly found over hard, algal-coated bottoms of exposed, surf-swept outer reef flats, lagoon and seaward reefs. 1-25 m.
Max. recorded size: 50 cm.
Food: Seaweed and associated invertebrates.

Kyphosus cinerascens
Nue • Blue sea chub



Habitat: Around coral reefs, typically in surge zone at reef edge. 0-40 m.
Max. recorded size: 40 cm.
Food: Algae.

Siganus argenteus
Ma'ava • Streamlined spinefoot

Habitat: Juveniles are found in shallow coral rubble, adults in isolated coral heads of lagoon and seaward reefs. 2-100 m.
Max. recorded size: 60.5 cm.
Food: Fish, crustaceans, and sometimes octopus.

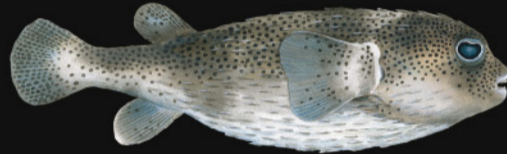


Epinephelus maculatus
Ngatala • Highfin grouper



Habitat: Sandy bottoms of reef flats, lagoons, and seaward reefs. 1-115 m.
Max. recorded size: 38 cm.
Food: Small worms and crustaceans.

Mulloidichthys vanicolensis
Vete • Yellowfin goatfish



Habitat: Lagoon and seaward reefs. 2-50 m.
Max. recorded size: 91 cm.
Food: Hard-shelled invertebrates like sea urchins, gastropods, and hermit crabs.

Diodon hystrix
Sokisoki • Spotfin porcupinefish

Habitat: Shallow sandy or silty areas with seagrass of coastal and inner lagoon reefs. 0-20 m.
Max. recorded size: 45 cm.
Food: Crab, shrimp, amphipods, octopus, polychaetes, and small fish.



Parupeneus indicus
Tukuleia • Indian goatfish



Habitat: Sand and rubble areas adjacent to rock and coral reefs. 15-50 m.
Max. recorded size: 45 cm.
Food: Bottom-dwelling gastropods.

Gymnocranius euanus
Kulapo • Japanese large-eye bream



Habitat: Shallow sandy, coral rubble, mangrove, lagoon, channel, and seagrass areas inshore and adjacent to coral reefs. 1-20 m.
Max. recorded size: 50 cm.
Food: Polychaetes, crustaceans, molluscs, echinoderms and small fish.

Lethrinus harak
Tanutanu • Thumbprint emperor

Habitat: Sand and rubble areas near coral reefs. 1-100 m.
Max. recorded size: 60 cm.
Food: Gastropods, echinoids, ophiuroids, and other invertebrates. Mostly nocturnal feeder.



Monotaxis grandoculis
Mū • Humpnose big-eye bream



Habitat: Coral reefs, coralline lagoons, seagrass beds, mangrove swamps and coastal sand and rock areas. 1-75 m.
Max. recorded size: 86 cm.
Food: Echinoderms, molluscs and crustaceans, occasionally fish.

Lethrinus nebulosus
Koango • Spangled emperor



Habitat: Seagrass beds, sand and rubble areas of coral reefs, deep channels, and lagoons. 0-150 m, but usually in shallow waters.
Max. recorded size: 70 cm.
Food: Crustaceans, fish and echinoderms.

Lethrinus xanthurus
Ngūngūtoa • Yellowlip emperor



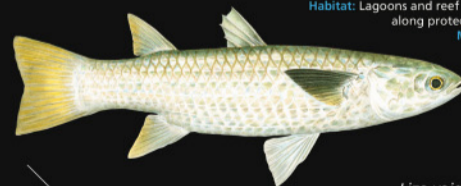
Habitat: Sandy areas around corals and outer slopes. 5-110 m.
Max. recorded size: 90 cm.
Food: Crustaceans, echinoderms, molluscs and fish.

Lethrinus miniatus
Mangā • Red throat emperor

Habitat: Seagrass beds or areas with dense algae. 0-10 m.
Max. recorded size: 35 cm.
Food: Seagrasses and epiphytes.



Leptoscarus vaigiensis
'Ufu • Marbled parrotfish



Habitat: Lagoons and reef flats, commonly along protected sandy shorelines.
Max. recorded size: 63 cm.
Food: Omnivorous.

Liza vaigiensis
'Unomoa • Squartail mullet



Habitat: Lagoon and seaward reefs. 1-15 m.
Max. recorded size: 35 cm.
Food: Algae and associated material scraped from rocks or dead corals.

Scarus oviceps
Hohomo • Darkcapped parrotfish

Habitat: Coastal inshore waters over muddy bottoms; juveniles around mangrove areas. 1-70 m.
Max. recorded size: 28 cm.
Food: Polychaetes and other worms, crustaceans and small fish.



Leiognathus equulus
Sipesipa • Common ponyfish



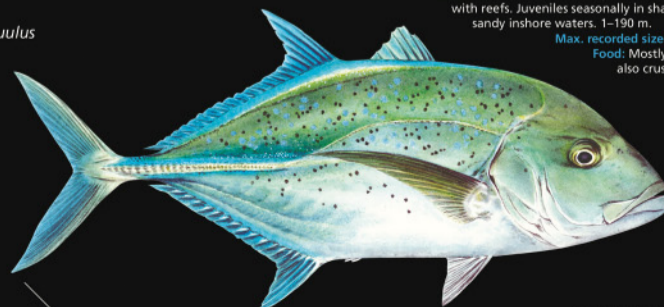
Habitat: Along the coast, in saltwater lagoons and estuaries. 0-20 m.
Max. recorded size: 30 cm.
Food: Small organisms living on sandy bottoms.

Gerres oyena
Matu • Common silverbiddy



Habitat: Open ocean, but often close to shore. 0-170 m.
Max. recorded size: 70 cm.
Food: Small shrimps and benthic invertebrates when inshore; zooplankton and fish larvae when offshore.

Selar crumenophthalmus
'Otule • Bigeye scad



Habitat: Coastal and oceanic, associated with reefs. Juveniles seasonally in shallow sandy inshore waters. 1-190 m.
Max. recorded size: 117 cm.
Food: Mostly fish, but also crustaceans.

Caranx melampygus
Lupo • Bluefin trevally

Habitat: Coastal bays, harbours and deep lagoons, usually in turbid plankton-rich waters. 0-90 m.
Max. recorded size: 35 cm.
Food: Phytoplankton (diatoms) and small zooplankton (larvae of crustaceans, fish, etc.).



Rastrelliger kanagurta
Nga'a • Indian mackerel

