

# Geoinformatics Section



Pacific  
Community  
Communauté  
du Pacifique

provide **integrated, demand-driven services** across GEM work programmes, projects and countries to ensure that essential and relevant **geo-spatial data and information** is generated, processed, derived **analysis and data-management systems** are operational, and that the necessary **capacity building** support is available to underpin the delivery of the technical work programmes

## Supporting **SDG** Goals using Geospatial Information



*\*In order of relevance to GEM; Source: UN-GGIM Paper on The Role of Geospatial Information in Sustainable Development Goals*

# Geoinformatics Section: Key Work Areas<sup>(1)</sup>

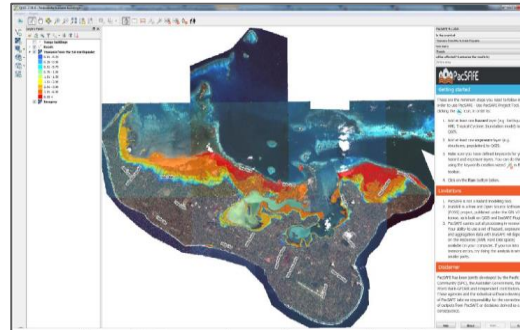


Pacific  
Community  
Communauté  
du Pacifique

## Spatial Data Infrastructure



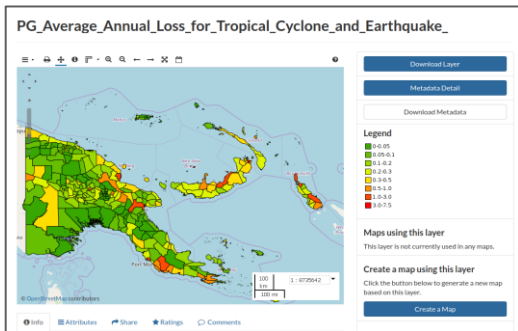
## Risk Impact Tools



## Post-Disaster Response Mapping



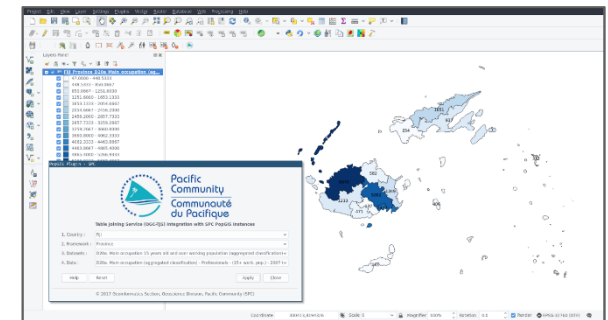
## Geo-Hazard, Exposure Data



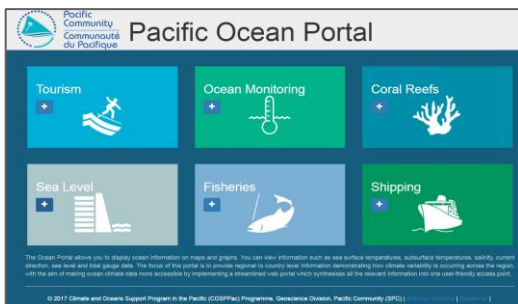
## Capacity Building



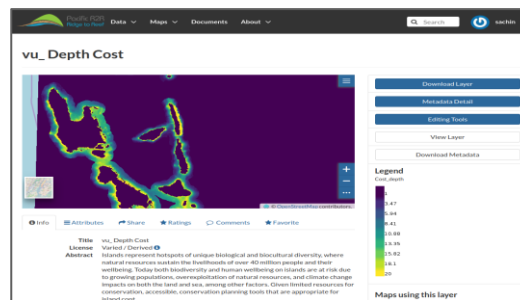
## Geospatial Software Engineering



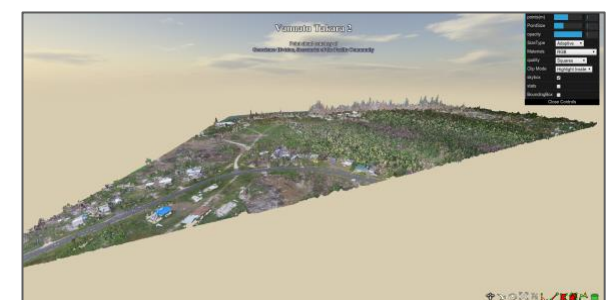
## Temporal-Spatial Oceans Systems Support



## Bathymetric Data Support



## LiDAR Data Processing



# Geoinformatics Section: Key Work Areas (2)

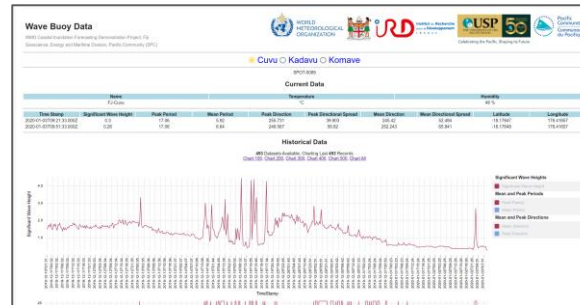


Pacific  
Community  
Communauté  
du Pacifique

## RADAR Data Processing



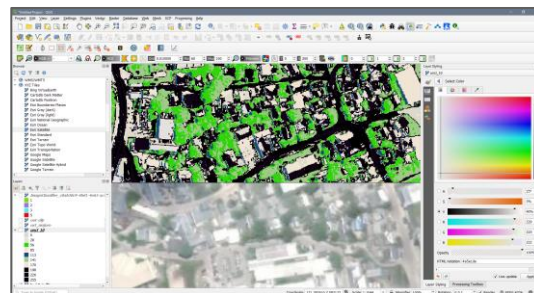
## Real-Time Oceans Data Support



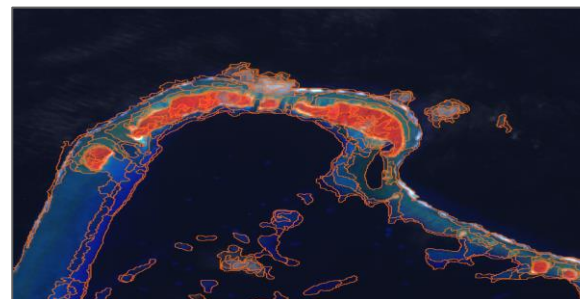
## Decision Support Tools



## Open Source Remote Sensing Tool-Chains



## EO Platform Analytics (ODC)



## Digital Library

