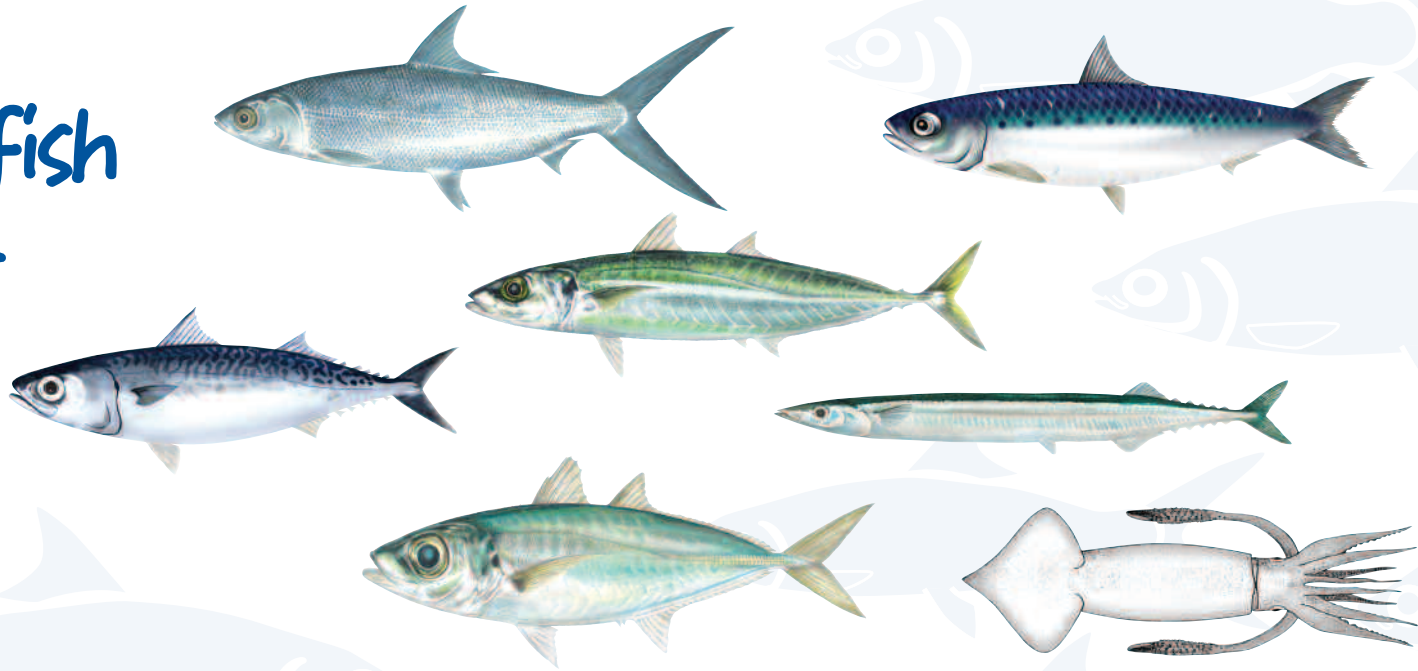


# Baitfish

## Appât



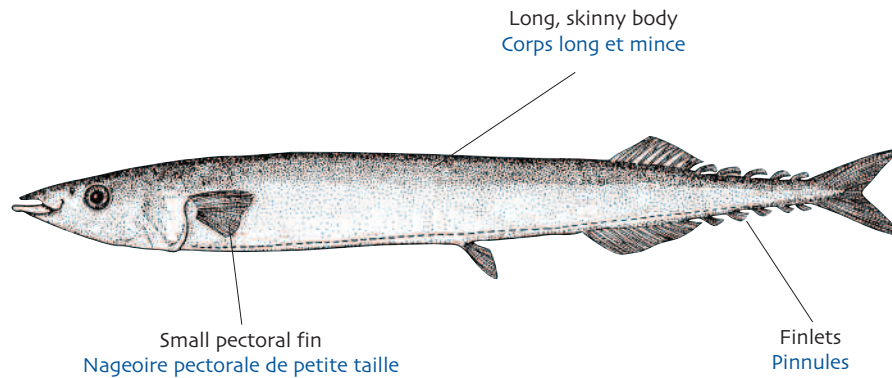
Scientific	English	French	FAO code	Page
<i>Cololabis saira</i>	Pacific saury, Sanma	Balaou du Japon, Balaou du Pacifique	SAP	146
<i>Sardinops sagax</i>	South American pilchard	Pilchard du Pacifique, Pilchard sud-américain	CHP	147
<i>Scomber japonicus</i>	Chub mackerel	Maquereau espagnol	MAS	148
<i>Decapterus macarellus</i>	Mackerel scad	Comète maquereau	MSD	149
<i>Selar crumenophthalmus</i>	Bigeye scad	Sélar coulisou	BIS	150
<i>Chanos chanos</i>	Milkfish	Chanos, Poisson lait	MIL	151
Ommastrephidae	Squid	Encornets	OMZ	152

# Cololabis saira

SAP



- English: Pacific saury, Sanma
- French: Balaou du Japon, Balaou du Pacifique
- Japanese: Sanma
- Hawaiian: Sanma
- Local:



Maximum length: 45 cm  
Taille maximum : 45 cm

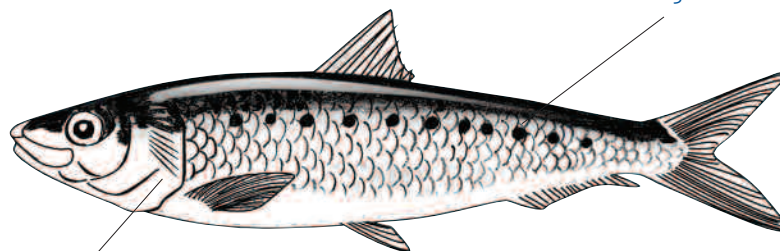
# *Sardinops sagax*

CHP



English: South American pilchard  
French: Pilchard du Pacifique, Pilchard sud-américain  
Japanese: Ma-iwashi  
Hawaiian: Makiawa, Sardine  
Local:

Lateral series of ten to twenty dark bluish gold spots, sometimes very faint  
Série latérale de dix à vingt taches dorées aux reflets bleus, parfois très subtiles



Radiating bony striae on operculum  
Stries osseuses en éventail sur l'opercule

Maximum length: 25 cm  
Taille maximum : 25 cm

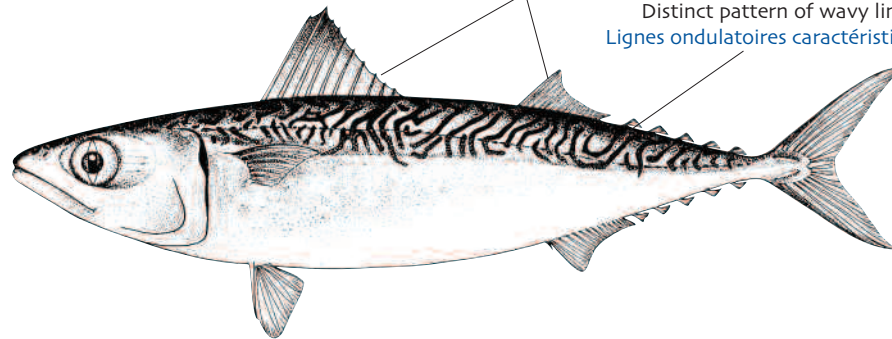
# *Scomber japonicus*

MAS



Dorsal fins widely separated  
Nageoires dorsales très espacées

Distinct pattern of wavy lines on back  
Lignes ondulatoires caractéristiques sur le dos

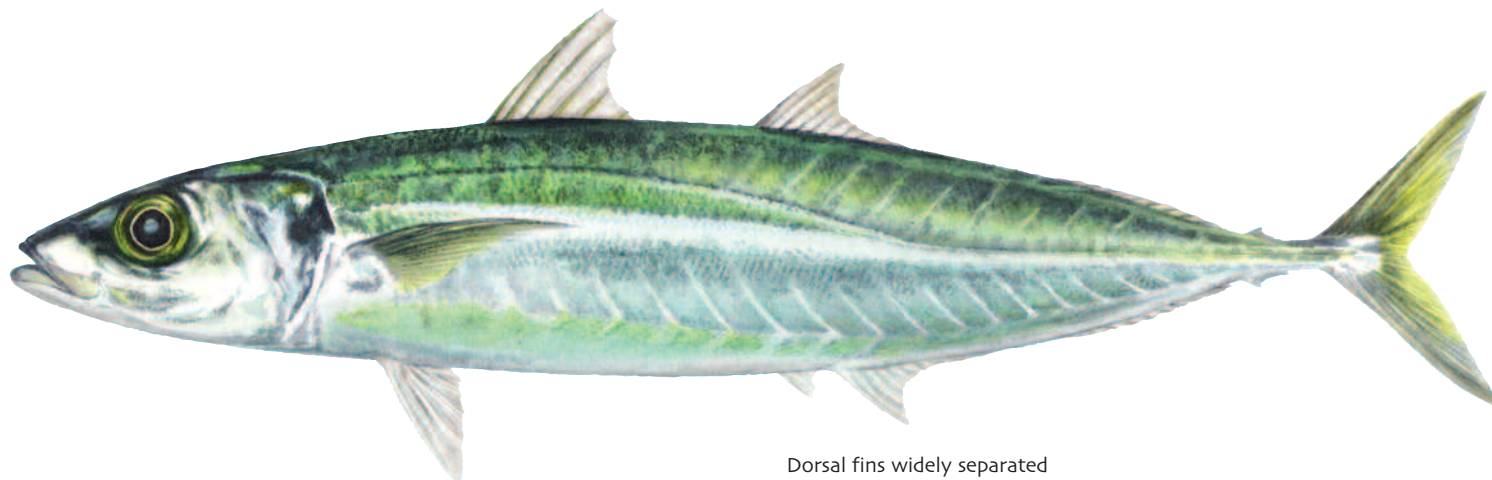


Maximum length: 50 cm  
Taille maximum : 50 cm

English: Chub mackerel  
French: Maquereau espagnol  
Japanese: Ma-saba  
Hawaiian: Saba, Mackerel  
Local:

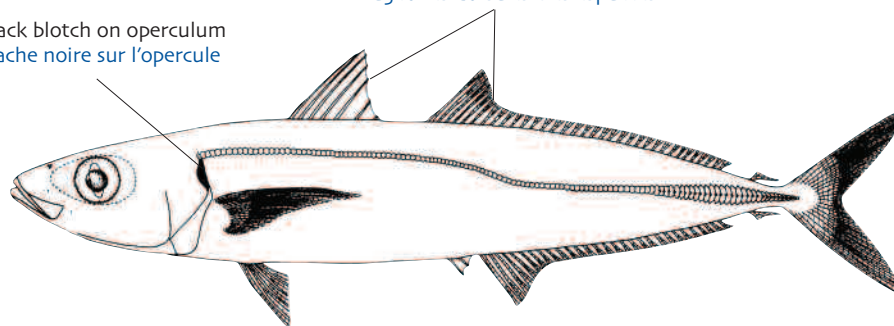
# *Decapterus macarellus*

MSD



Dorsal fins widely separated  
Nageoires dorsales très espacées

Black blotch on operculum  
Tache noire sur l'opercule



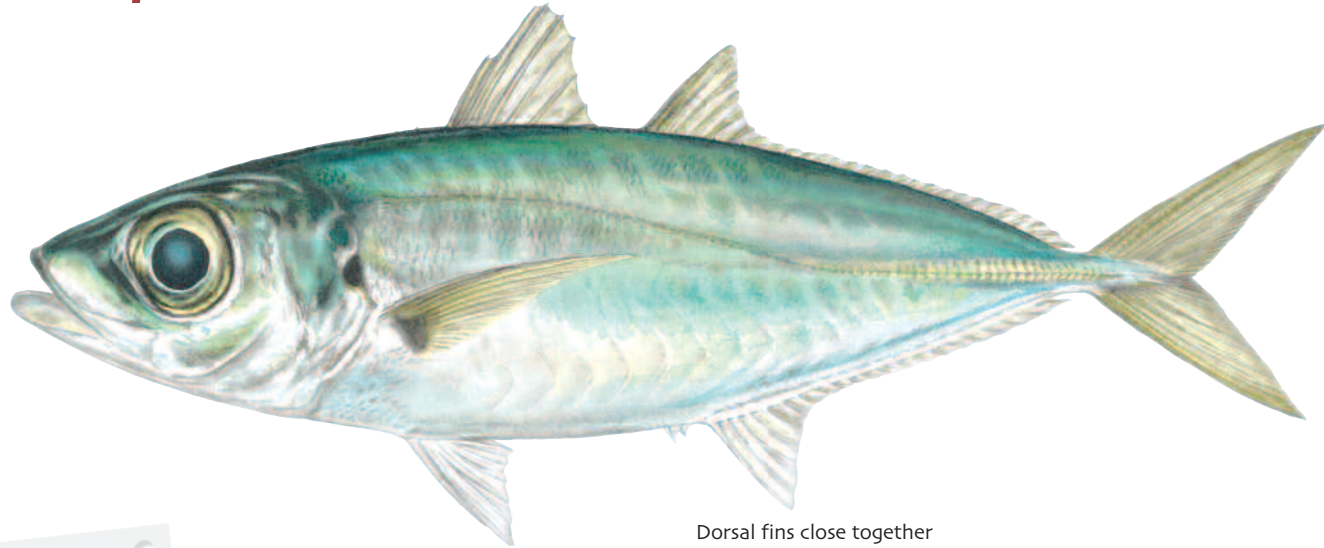
English: Mackerel scad  
French: Comète maquereau  
Japanese: Kusayamoro,  
Muro aji  
Hawaiian: Opelu, Opelu-mama  
Local:

Maximum length: 40 cm  
Taille maximum : 40 cm



# *Selar crumenophthalmus*

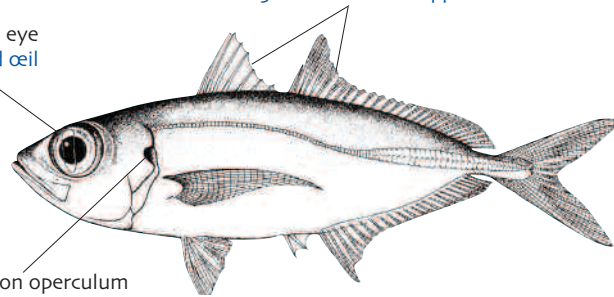
BIS



Dorsal fins close together  
Nageoires dorsales rapprochées

Very large eye  
Très grand œil

Black spot on operculum  
Tache noire sur l'opercule

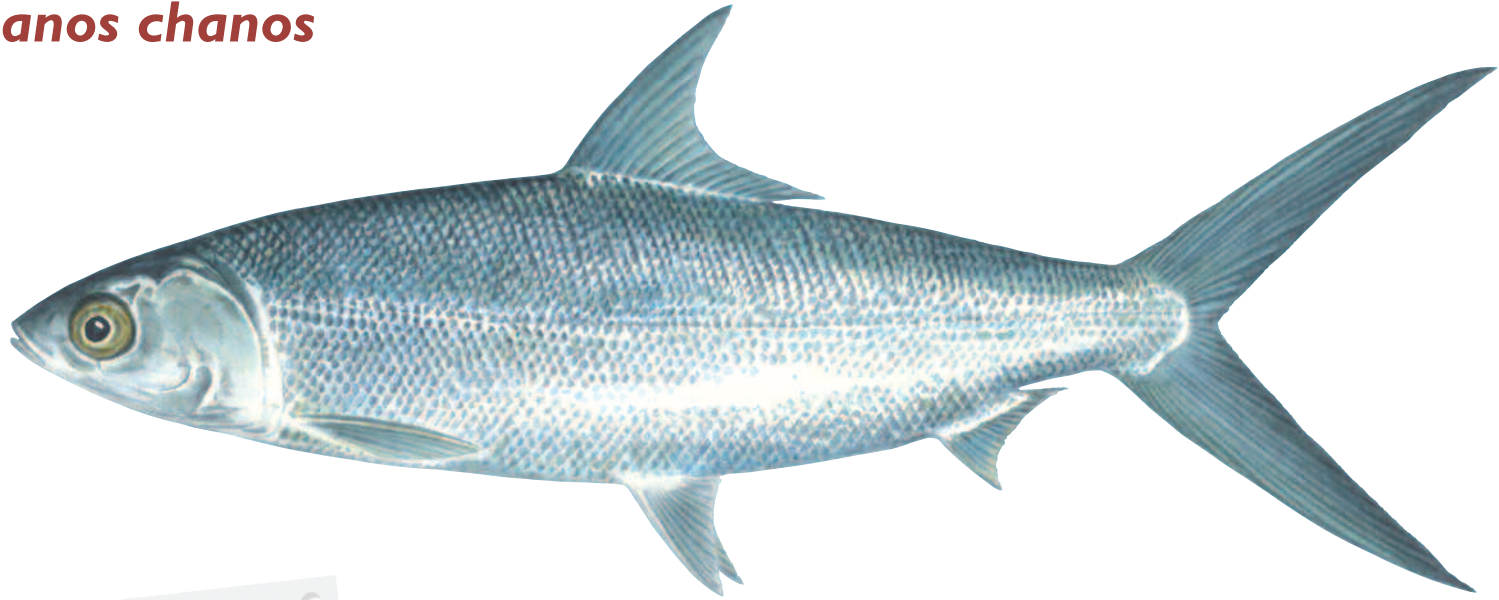


Maximum length: 50 cm  
Taille maximum : 50 cm

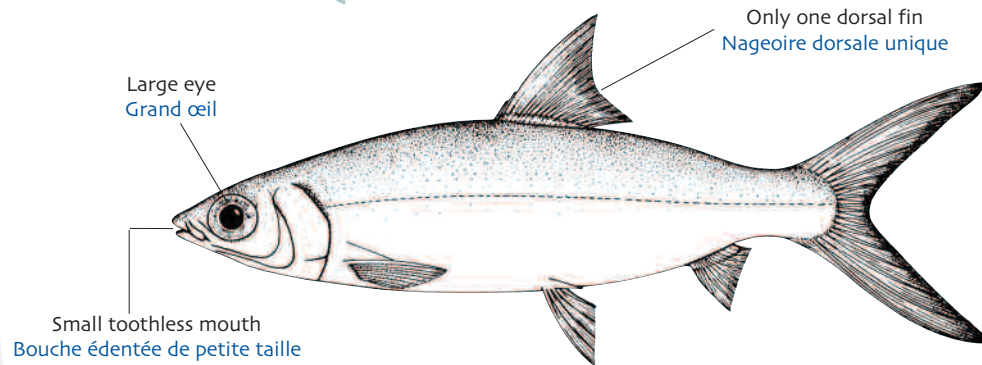
English: Bigeye scad  
French: Sélar coulisou  
Japanese: Me-aji  
Hawaiian: Akule (large),  
Halalu (medium),  
Pa'a'a (small)  
Local:

# Chanos chanos

MIL



English: Milkfish  
French: Chano, Poisson lait  
Japanese: Sabahii, Miruku  
Hawaiian: Awa  
Local:

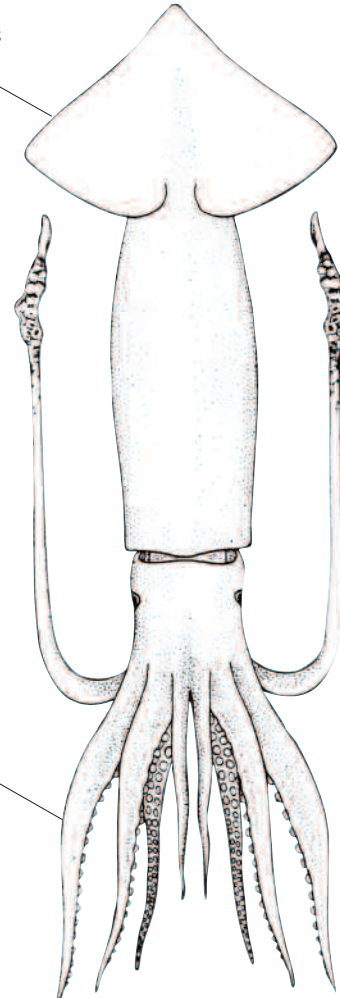
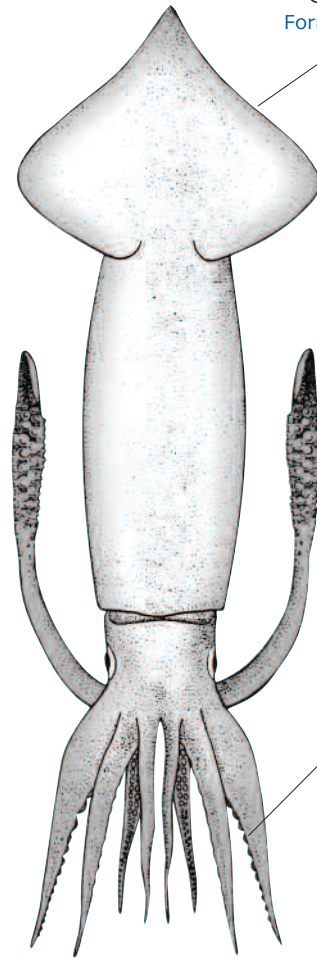


Maximum length: 110 cm  
Taille maximum : 110 cm

# Ommastrephidae

OMZ

Characteristic body shape  
Forme caractéristique du corps



Tentacles  
Tentacules

English: Squid  
French: Encornets  
Japanese: Ika-ru  
Hawaiian: Mu'hee, Ika, Squid  
Local: