

FAO copyright and disclaimer notices

This information product is intended to be used by anyone who wants to build a boat to a particular and suitable FAO design, it being understood that it is the responsibility of the intended user regarding the selection of a vessel design on the basis of its suitability for the intended fishery, sea state and weather and the availability of suitable construction material and building capability. Furthermore, it is the responsibility of the intended user to comply with national legislation for authorization to construct a fishing vessel and obtain approval of technical specifications. It being noted that the application to build a vessel must be accompanied by the specifications of mandatory safety equipment and outfit. In the case there is no national legislation in place for the design, construction and equipment of vessels FAO recommends that the intended user applies appropriate international standards, such as the FAO/ILO/IMO Safety recommendations for decked fishing vessels of less than 12 metres in length and undecked fishing vessels.

The designations employed and the presentation of material in this information product do not imply the expression of any opinion whatsoever on the part of the Food and Agriculture Organization of the United Nations (FAO) concerning the legal or development status of any country, territory, city or area or of its authorities, or concerning the delimitation of its frontiers or boundaries. The mention of specific companies or products of manufacturers, whether or not these have been patented, does not imply that these have been endorsed or recommended by FAO in preference to others of a similar nature that are not mentioned.

All rights reserved. FAO encourages the reproduction and dissemination of material in this information product. Non-commercial uses will be authorized free of charge, upon request. Reproduction for resale or other commercial purposes, including educational purposes, may incur fees. Applications for permission to reproduce or disseminate FAO copyright materials, and all queries concerning rights and licences, should be addressed by e-mail to copyright@fao.org or to the Chief, Publishing Policy and Support Branch, Office of Knowledge Exchange, Research and Extension, FAO, Viale delle Terme di Caracalla, 00153 Rome, Italy.

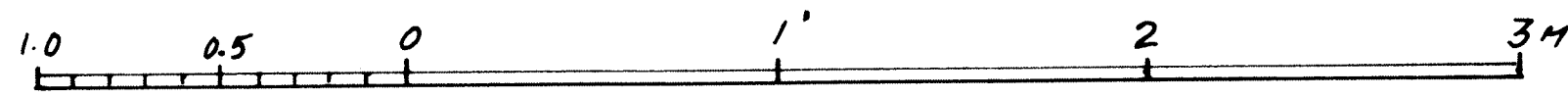
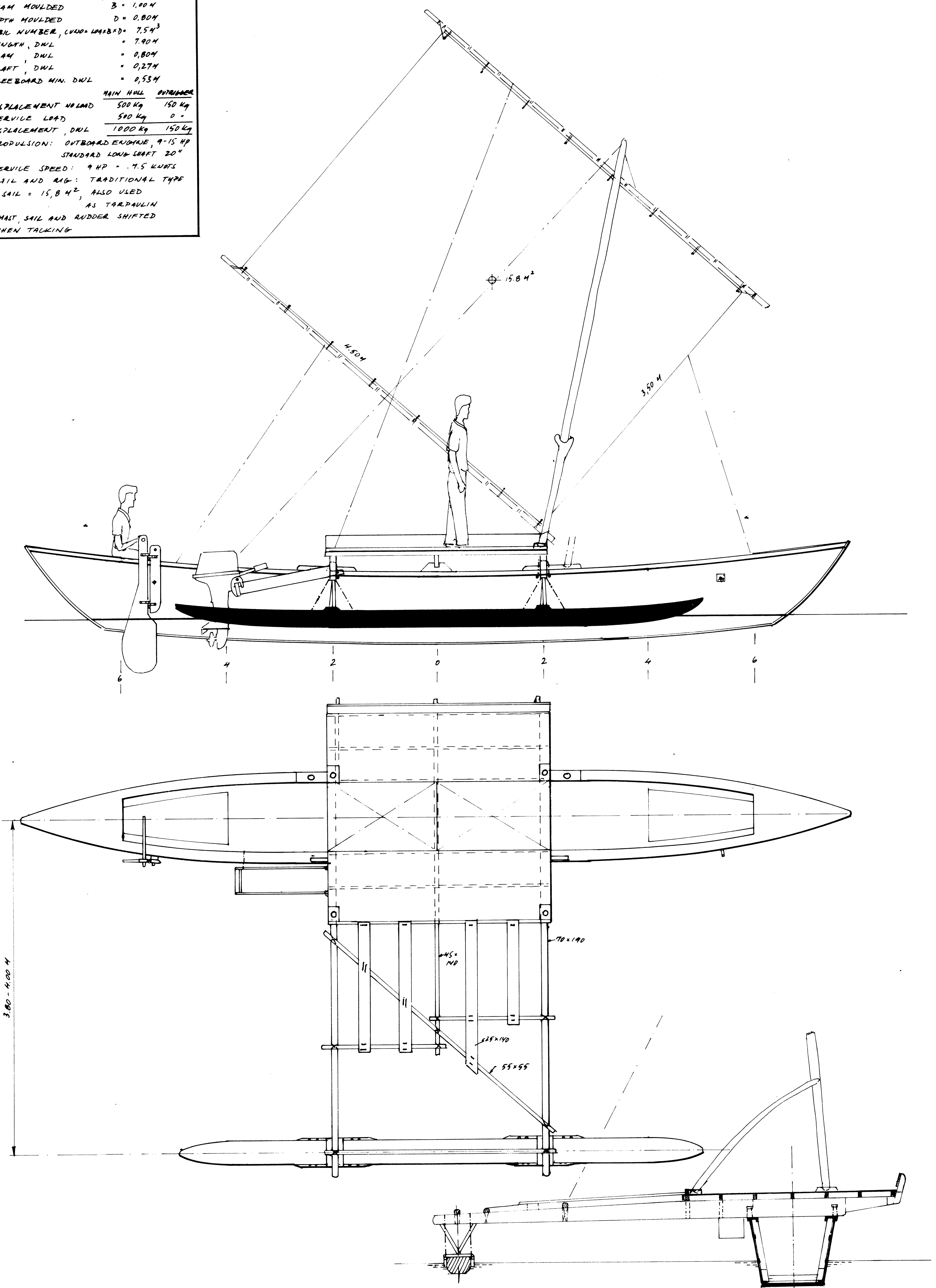
PARTICULARS

LENGTH OVER ALL - LOA = 9,40M (30,8')
 BEAM MOULDED B = 1,00M
 DEPTH MOULDED D = 0,80M
 CUBIC NUMBER, UNO-UNBARD = 7,5M³
 LENGTH, DWL = 7,90M
 BEAM, DWL = 0,80M
 DRAFT, DWL = 0,27M
 FREE BOARD MIN. DWL = 0,53M

	MAIN HULL	OUTRIGGER
DISPLACEMENT NOLOAD	500 Kg	150 Kg
SERVICE LOAD	500 Kg	0 -
DISPLACEMENT, DWL	1000 Kg	150 Kg

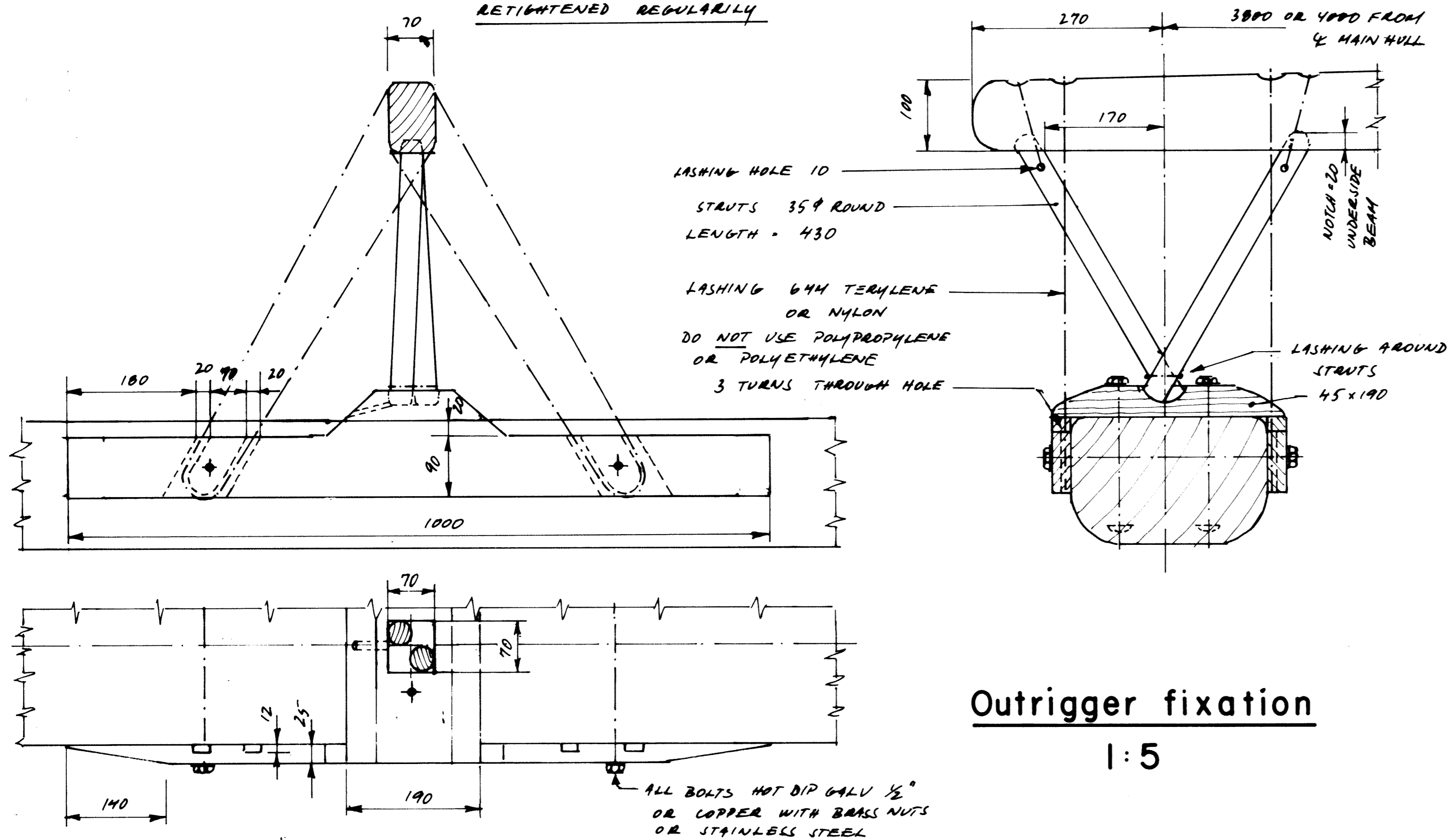
PROPULSION: OUTBOARD ENGINE, 9-15 HP
 STANDARD LOW SHAFT 20"

SERVICE SPEED: 9 HP = 7,5 KNOTS
 SAIL AND RIG: TRADITIONAL TYPE
 SAIL = 15,8 M², ALSO USED
 AS TARPULIN
 MAIT, SAIL AND RUDDER SHIFTED
 WHEN TACKING



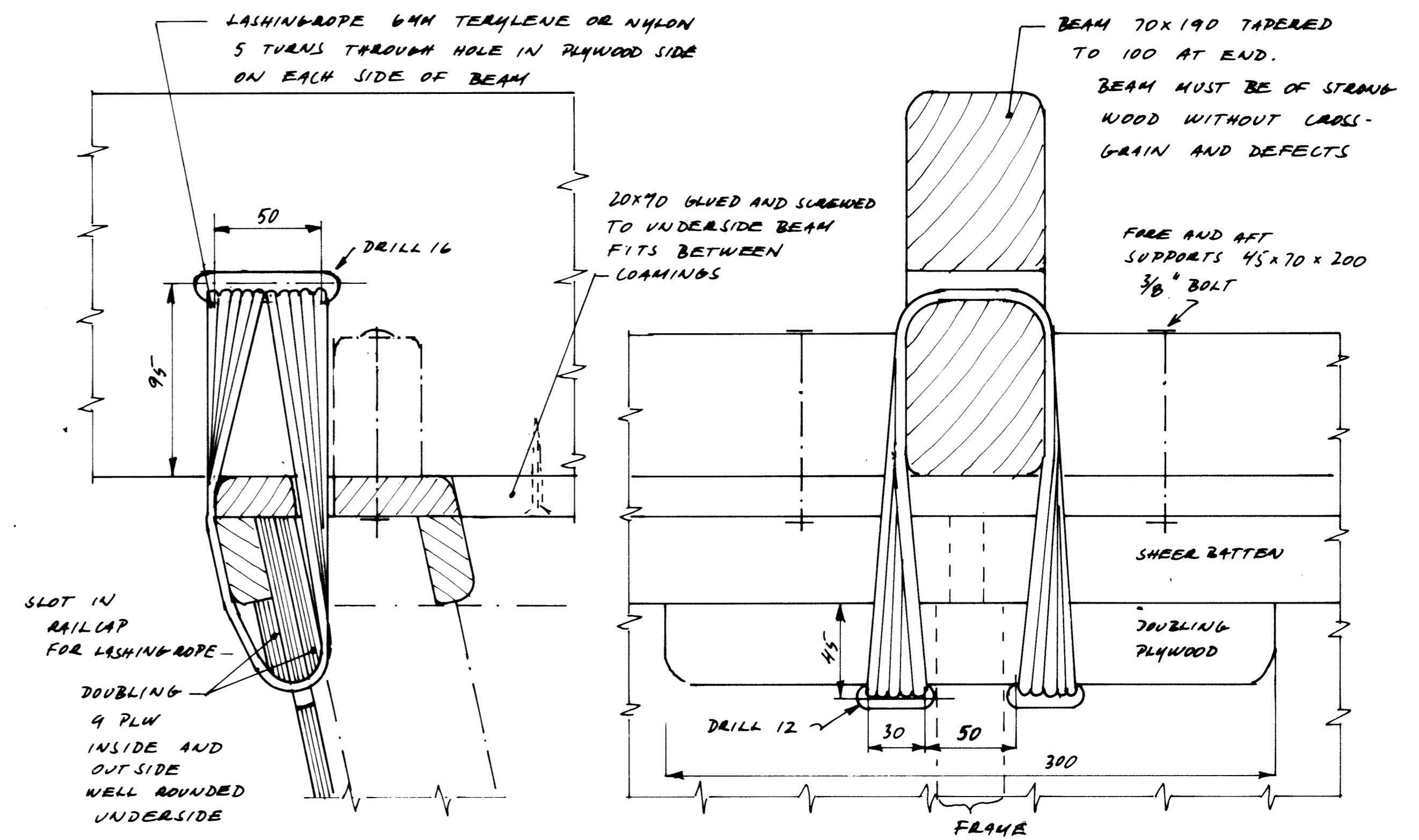
	9.4 m Canoe	
	GENERAL ARRANGEMENT	
	SCALE = 1:20	DESIGN NO.
	DESIGN: O. Gulbraaten	GRIMSTAD, MARCH-89
PNG-9		1

IMPORTANT: LASHING MUST BE
RETIGHTENED REGULARLY



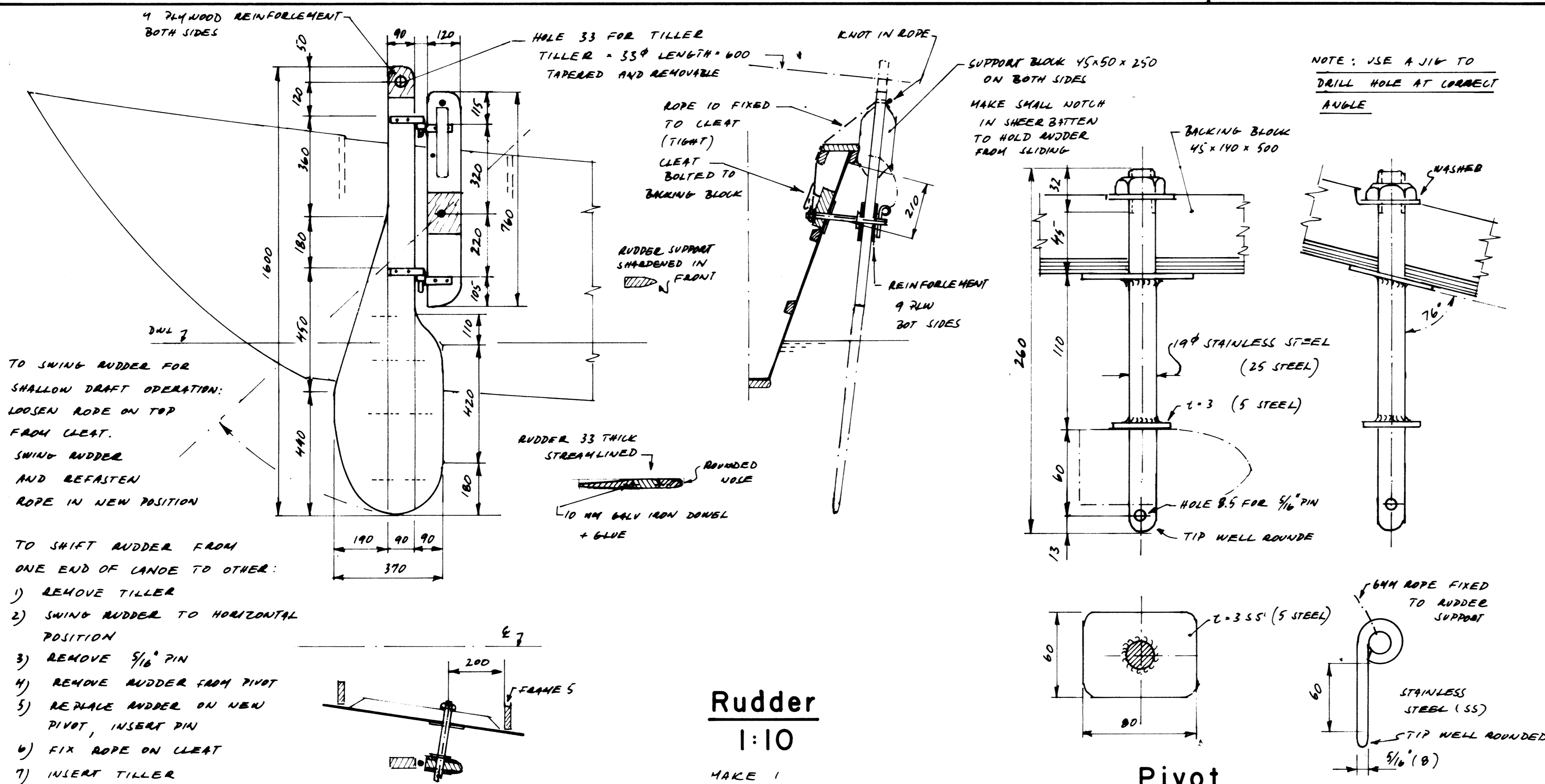
Outrigger fixation

1:5



Beam fixation

1:2



Rudder

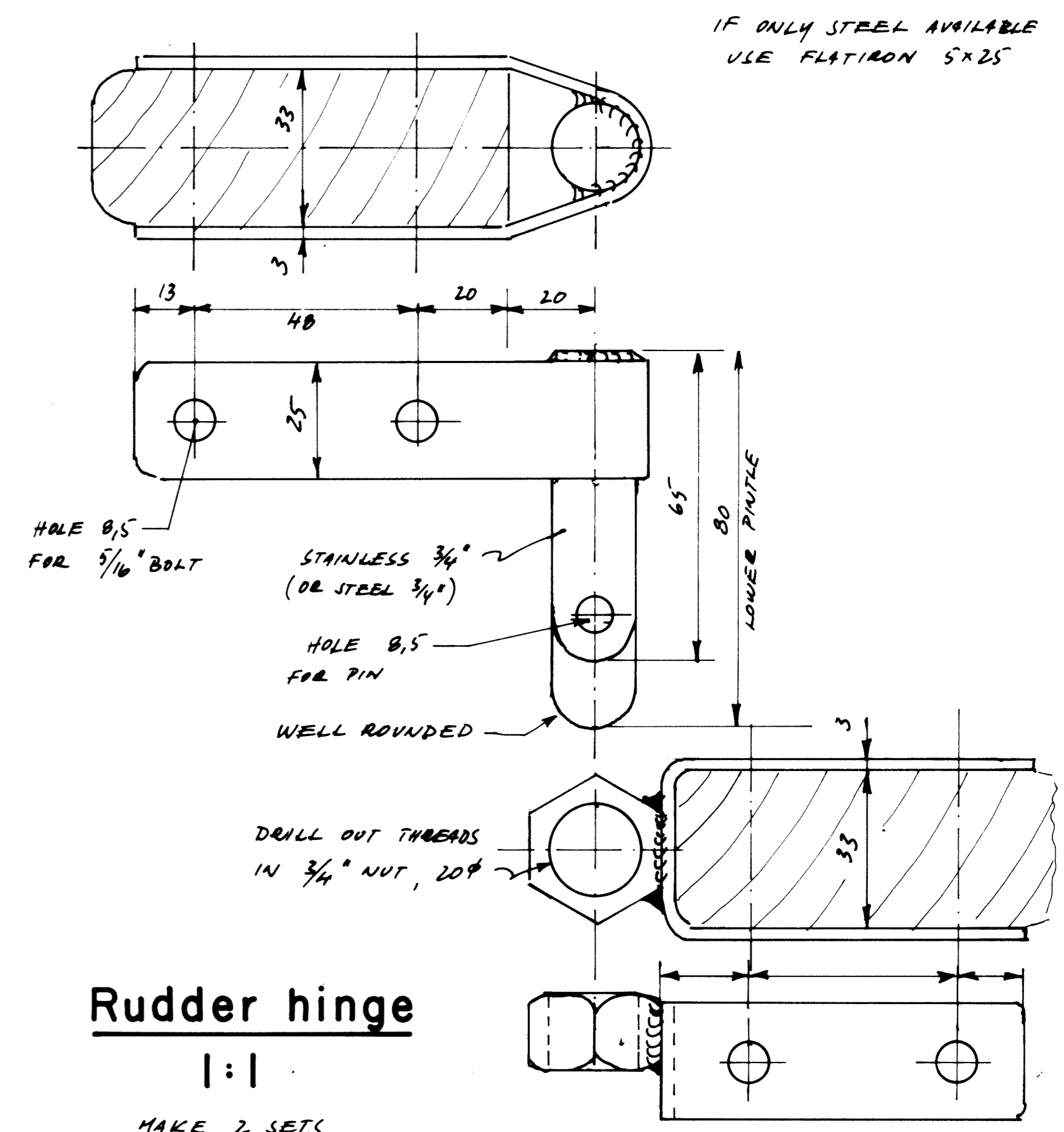
1:10

MAKE 1

Pivot

1:2

MAKE 2



Rudder hinge

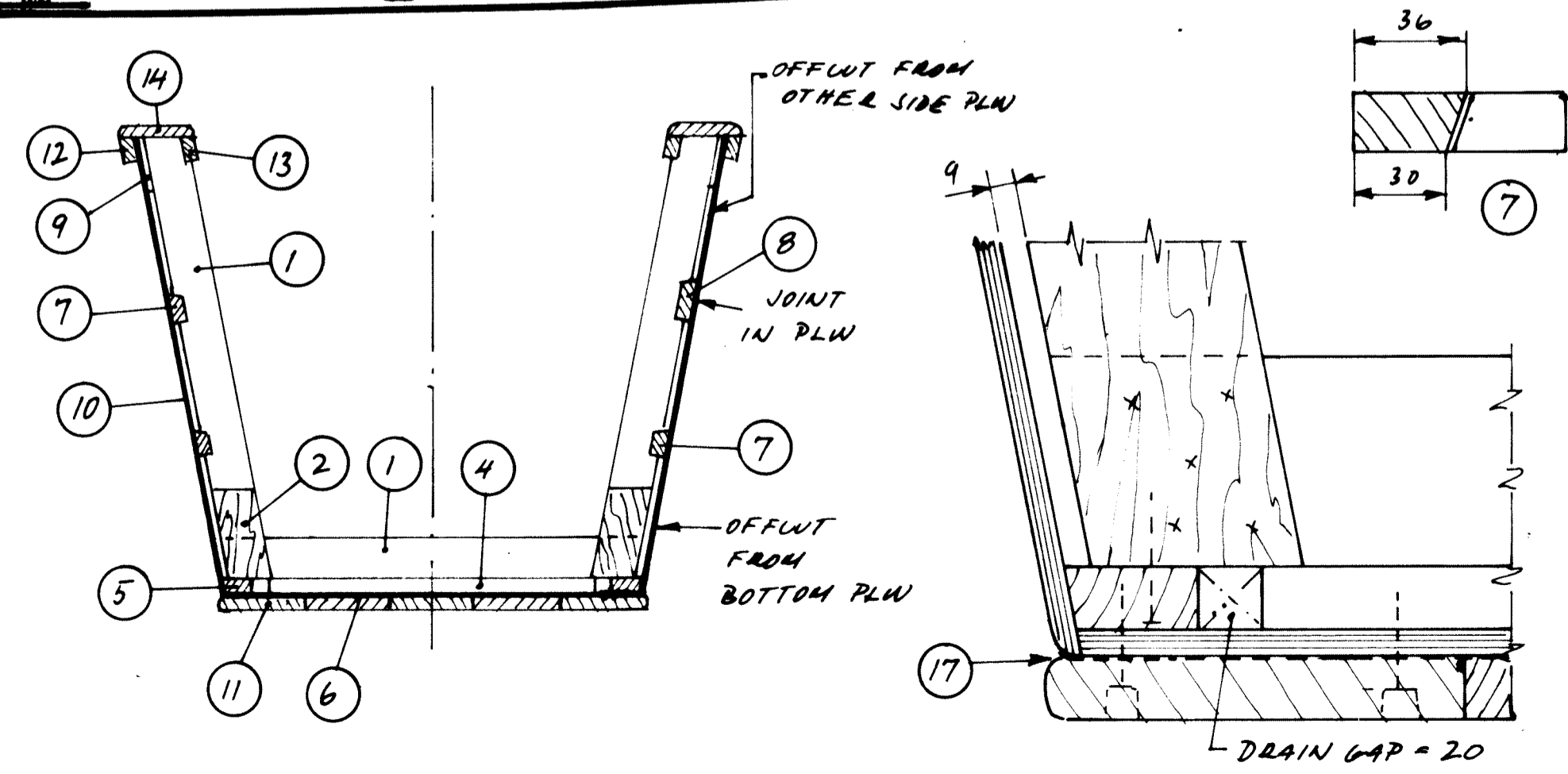
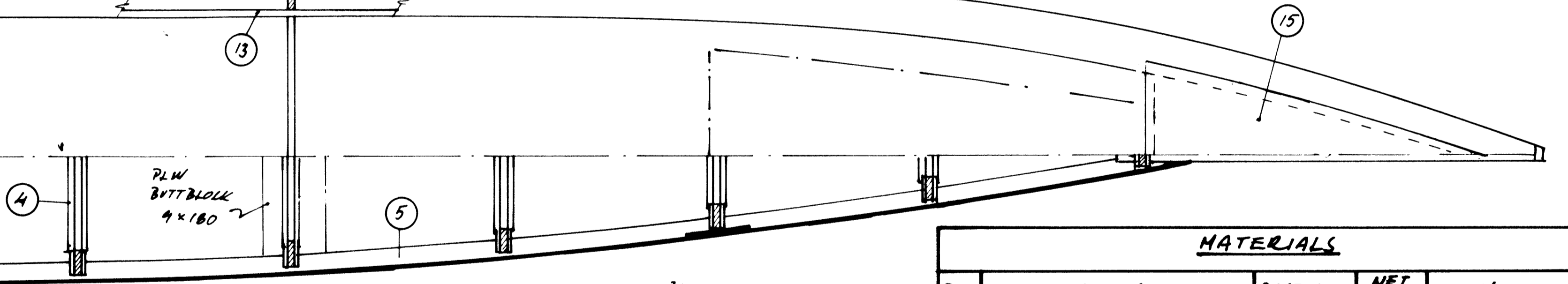
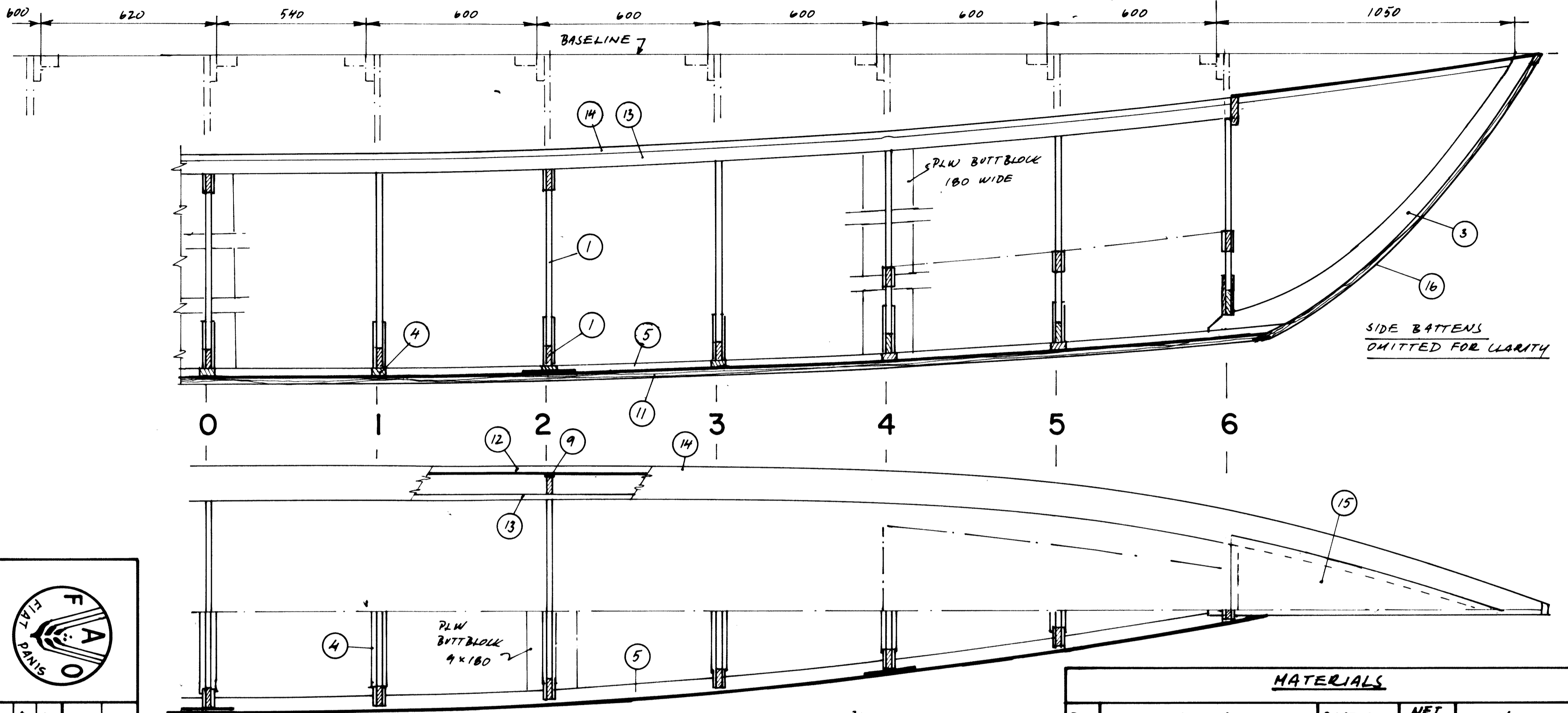
1:1

MAKE 2 SETS

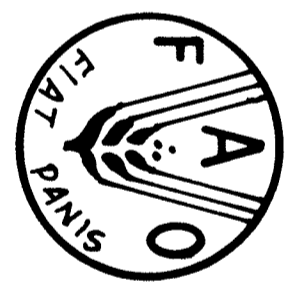


9.4m Canoe DETAILS

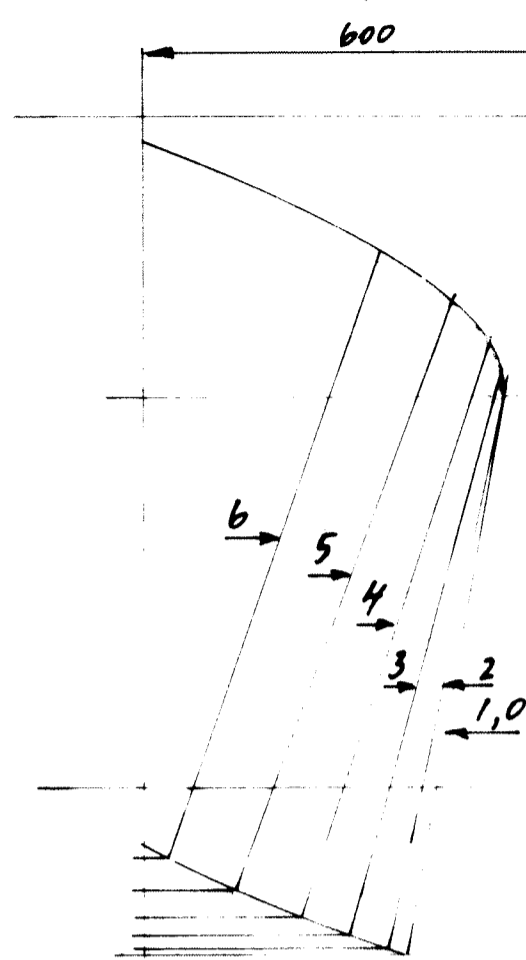
SCALE: AS SHOWN	DESIGN NO	DRAW. NO.
DESIGNER: G. Carlsson	PNG-9	4
URINSTAD, MARCH - 89		



MATERIALS				
POS	ITEM	DIMENSION	NET LENGTH	NOTES
1	FRAME	20 x 70		
2	GUSSET	9 PLW		
3	STEM	45		LWT FROM 45 x 200
4	BOTTOM GLEAT	20 x 45		
5	CHINE	20 x 45		
6	BOTTOM PLYWOOD	9 PLW		
7	SIDE BATTENS	20 x 36		LWT FROM 20 x 70
8	SIDE BATTEN	20 x 70		JOINT PLYWOOD
9	FILLER PIECE, PLW	9 x 30 x 100		GLUED TO FRAME
10	SIDE PLYWOOD	9 PLW		
11	BOTTOM PROTECTION	20 x 140		
12	SHEER BATTEN	20 x 45		
13	COMING	20 x 45		
14	RAIL CAP	20 x 120		LWT FROM 20 x 140
15	DECK	9 PLW		
16	OUTER STEM	20 x 45		
17	TAR + 40S BUITONETTING			ALT: F&D SHEATHING



Scale: 1:10
 Designer: P. G. ...
 DRAWING NO. PNG-9
 3
9.4 m Canoe CONSTRUCTION



0 1 2 3 4 5 6

BASELINE ↘

SHEER ↘

CHINE ↘

SHEER ↘

CHINE ↘

	0	1	2	3	4	5	6
A	370	368	355	330	295	242	180
B	1108	1107	1098	1080	1055	1018	972
C	475	475	475	475	455	407	310
D	337	330	310	270	205	122	30



9.4 m Canoe

FRAMES

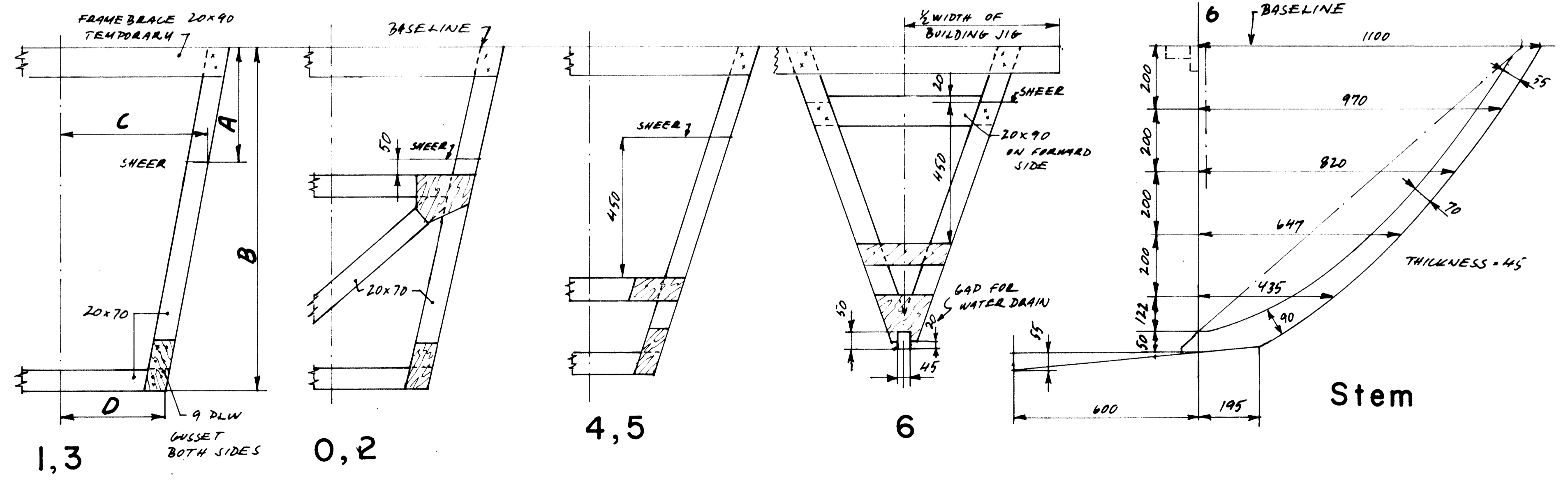
SCALE = 1:10

DESIGNER: P. Cambray

CONSTRUCTED: MARCH-89

DESIGN NO. **PNG-9**

DRAWG. NO. **2**



Stem