



Pacific
Community
Communauté
du Pacifique

An Equitable and Inclusive Pacific Maritime Sector

Heads of Maritime Meeting

22 April 2024 | Tanoa Hotel, Nadi, Fiji

5th PRETMM – EFATE Outcome Statement

“**Commit** to mobilising appropriate resources, finances, infrastructure, technology and capacity building for a safe, resilient, green, clean, digital, **gender-just** maritime transport for the Blue Pacific.”

Policy Coherence for Gender Equality in Maritime in the Pacific Region

Sustainable Development Goals

Commission on the Status of Women (CSW)

Convention on the Elimination of All Forms of Discrimination against Women (CEDAW)

Beijing Declaration and Platform for Action

Pacific Leaders' Gender Equality Declaration (PLGED)

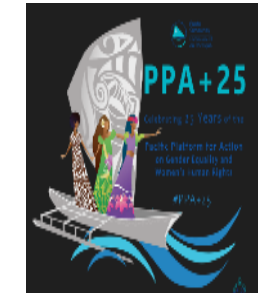
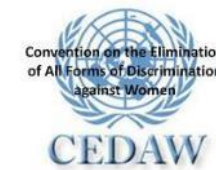
Pacific Platform for Action for Gender Equality and Women's Human Rights (2018-2030)

2050 Strategy for the Blue Pacific Continent

SAMOA Pathway

Pacific Regional Strategy for Women in Maritime

Pacific Blueprint for Gender Statistics





Pacific
Community
Communauté
du Pacifique

Why a Flagship approach
to Gender Equality
at SPC?

What is the value of having
this Gender Equality
Flagship?



Participants at the
Gender Equality Flagship Roundtable Discussion, Noumea

SPC's Gender Equality Flagship

“

The Gender Equality Flagship will provide an over-arching framework for action on the cross-cutting issue of gender inequality.

”



As One SPC - weaving together the different streams of gender work to create a cohesive approach to advance gender equality.

Value of working through a Flagship

Amplify Impact

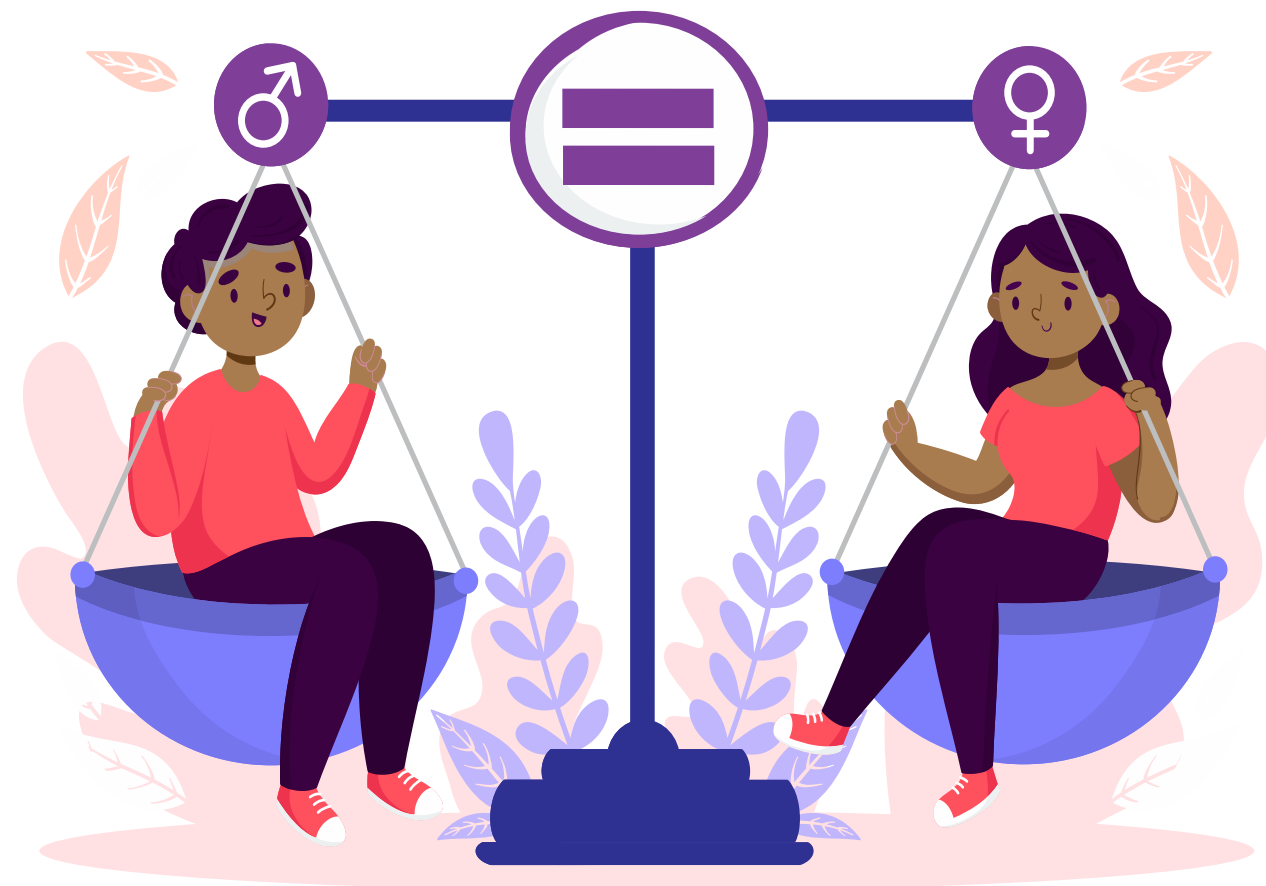
Make gender equality work more visible

Create clear Entry Points

Leverage Expertise

Align with current regional strategies

Long-term Sustainability



How do we get there?

- Women make up **2%** of seafarers globally
- What does a gender-just maritime sector look like?

