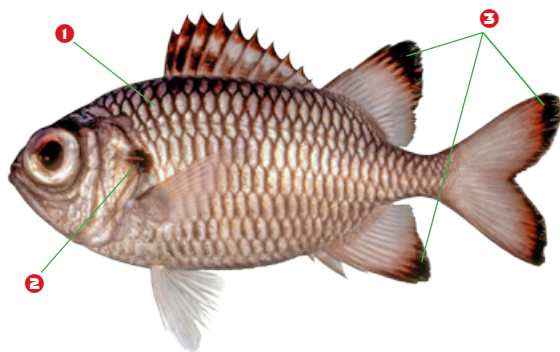


YDX***Myripristis adusta***

Holocentridae / Soldierfish and Squirrelfish

Shadowfin soldierfish



Silvery-salmon pink with **1** dark scale margins, particularly on upper body. **2** Reddish-black spot on rear margin of gill covers and **3** reddish-black margins on soft dorsal, anal and caudal fins.

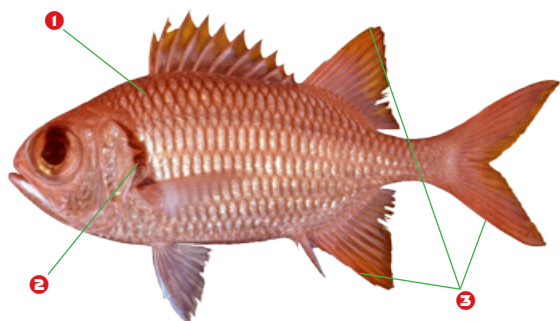
Max length: 30 cm FL

AS	CK	FJ	FM	GU	KI
MH	MP	NC	NR	NU	PF
PG	PN	PW	SB	TK	TO
TV	VU	WF	WS		

YDX***Myripristis amaena***

Holocentridae / Soldierfish and Squirrelfish

Brick soldierfish



Silvery-red with **1** dark scale margins and **2** dark red band on margin of gill covers. **3** Dorsal, anal and caudal fins red without white margins.

Max length: 27 cm FL

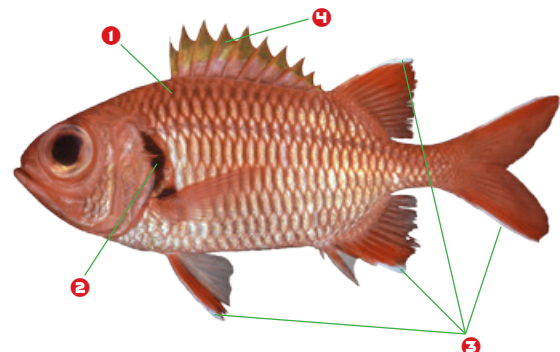
AS	CK	FJ	FM	GU	KI
MH	MP	NC	NR	NU	PF
PG	PN	PW	SB	TK	TO
TV	VU	WF	WS		

Similar to *Myripristis violacea* but without white margins on soft dorsal, anal and caudal fins.

YJW***Myripristis berndti***

Holocentridae / Soldierfish and Squirrelfish

Blotcheye soldierfish, bigscale soldierfish



White with red tints and **1** red scale margins. **2** Dark margin on gill covers and **3** white margins on soft dorsal, pelvic, anal and caudal fins. **4** Outer part of spiny dorsal fin orange-yellow.

Max length: 28 cm FL

AS	CK	FJ	FM	GU	KI
MH	MP	NC	NR	NU	PF
PG	PN	PW	SB	TK	TO
TV	VU	WF	WS		

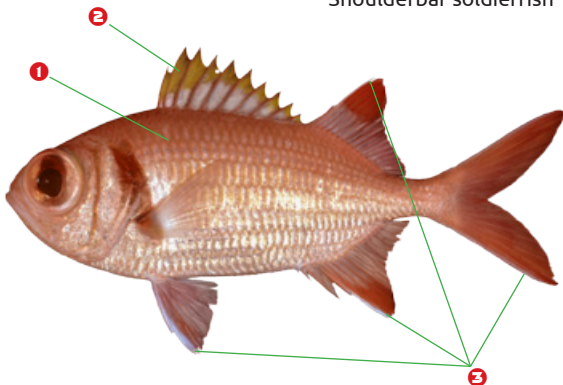
Similar to *Myripristis kuntzei* but with much larger scales and a redder overall appearance.

Shoulderbar soldierfish

Silvery orange-red with **1** darker scale margins. Small scales relative to other soldierfishes. **2** Outer part of spiny dorsal fin yellow or orangish-yellow and **3** white margins on soft dorsal, pelvic, anal and caudal fins. A small species, typically no larger than 15 cm FL.

Max length: 20 cm FL

AS	CK	FJ	FM	GU	KI
MH	MP	NC	NR	NU	PF
PG	PN	PW	SB	TK	TO
TV	VU	WF	WS		



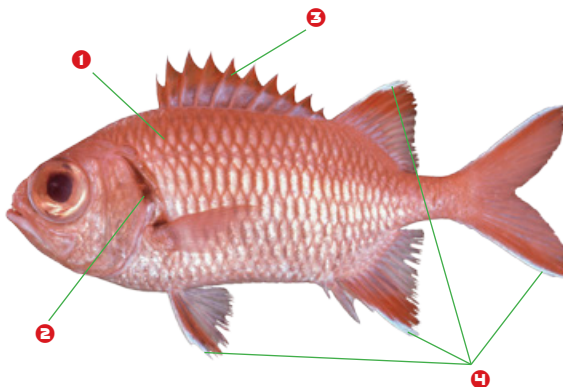
Similar to *Myripristis berndti* but with much smaller scales and a more orange overall appearance.

Pinecone soldierfish, small-eyed squirrelfish

Pink to silvery with **1** red scale margins and **2** reddish-brown margin on gill covers. **3** Red spiny dorsal fin and **4** narrow white margins on soft dorsal, pelvic, anal and caudal fins.

Max length: 25 cm FL

AS	CK	FJ	FM	GU	KI
MH	MP	NC	NR	NU	PF
PG	PN	PW	SB	TK	TO
TV	VU	WF	WS		

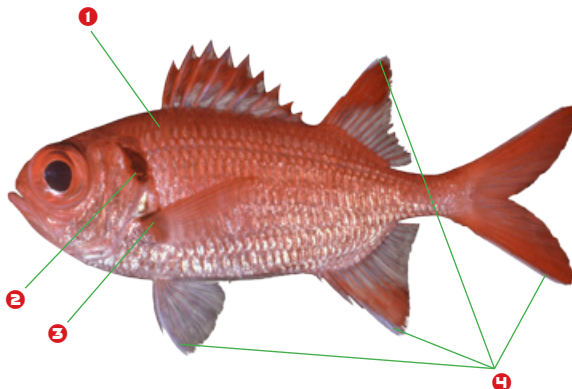


Scarlet soldierfish

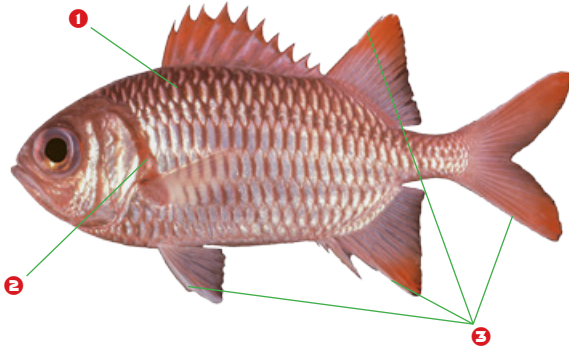
Red upper body to silvery lower body with **1** darker scale margins. **2** Brown margin on upper gill covers and **3** a reddish-brown spot at base of pectoral fins. **4** White margins on soft dorsal, pelvic, anal and caudal fins.

Max length: 20 cm FL

AS	CK	FJ	FM	GU	KI
MH	MP	NC	NR	NU	PF
PG	PN	PW	SB	TK	TO
TV	VU	WF	WS		



Lattice soldierfish, violet soldierfish

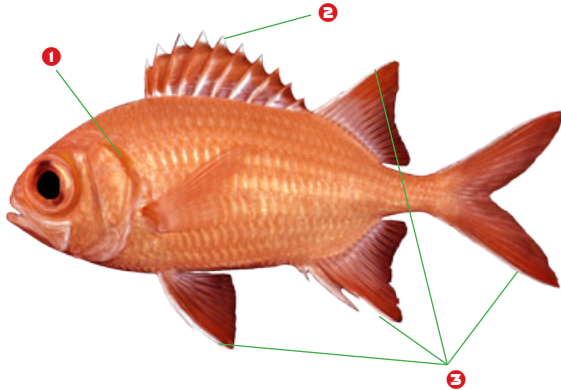
Similar to *Myripristis amaena* but with white margins on soft dorsal, anal and caudal fins.

Silvery-pink with **1** dark scale margins and **2** red band on margin of gill covers. **3** Soft dorsal, pelvic, anal and caudal fins red with white margins.

Max length: 22 cm FL

AS	CK	FJ	FM	GU	KI
MH	MP	NC	NR	NU	PF
PG	PN	PW	SB	TK	TO
TV	VU	WF	WS		

Whitetip soldierfish

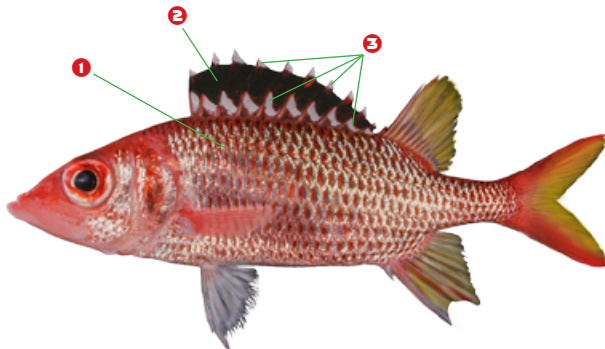


Orangish-red body with **1** slightly darkened margin on gill covers. **2** Dorsal fin spines have white tips, and **3** narrow white margins on soft dorsal, pelvic, anal and caudal fins.

Max length: 20 cm FL

AS	CK	FJ	FM	GU	KI
MH	MP	NC	NR	NU	PF
PG	PN	PW	SB	TK	TO
TV	VU	WF	WS		

Blackfin squirrelfish



Silvery to dark red with **1** reddish-black scale spots and slight yellow and green iridescence overall. **2** Dark spiny dorsal fin with **3** white tips and white spots at base of each membrane.

Max length: 32 cm FL

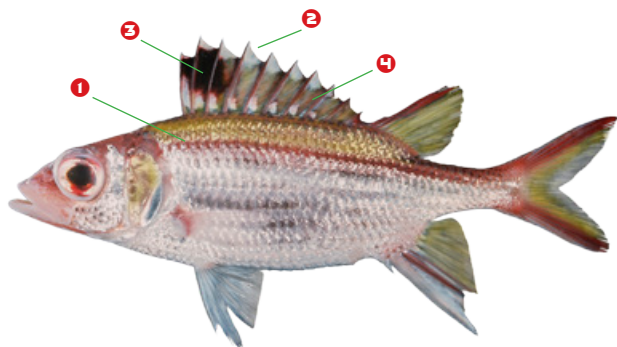
AS	CK	FJ	FM	GU	KI
MH	MP	NC	NR	NU	PF
PG	PN	PW	SB	TK	TO
TV	VU	WF	WS		

Sammara squirrelfish, spotfin squirrelfish

Silvery with **1** thin dark red to blackish stripes. **2** Tips of dorsal fin spines white with **3** large dark spot on first three membranes followed by **4** a narrowing dark red band.

Max length: 30 cm FL

AS	CK	FJ	FM	GU	KI
MH	MP	NC	NR	NU	PF
PG	PN	PW	SB	TK	TO
TV	VU	WF	WS		

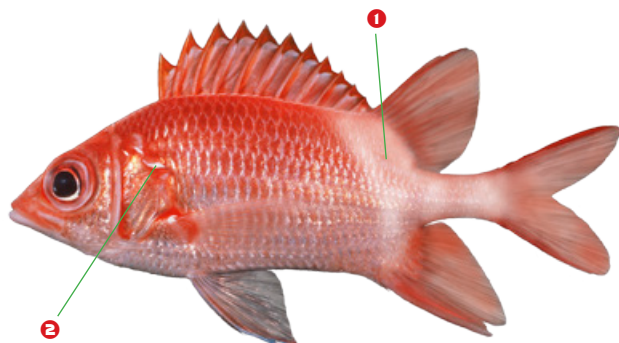


Silverspot squirrelfish, tailspot squirrelfish

Red head and forebody tending to **1** silvery-white towards rear of body and base of caudal fin. **2** Small white streak above upper margin of gill covers.

Max length: 23 cm FL

AS	CK	FJ	FM	GU	KI
MH	MP	NC	NR	NU	PF
PG	PN	PW	SB	TK	TO
TV	VU	WF	WS		



Threespot squirrelfish

Orangish-red with **1** white horizontal stripes on body. **2** Reddish-black spot on middle of base of caudal fin.

Max length: 25 cm FL

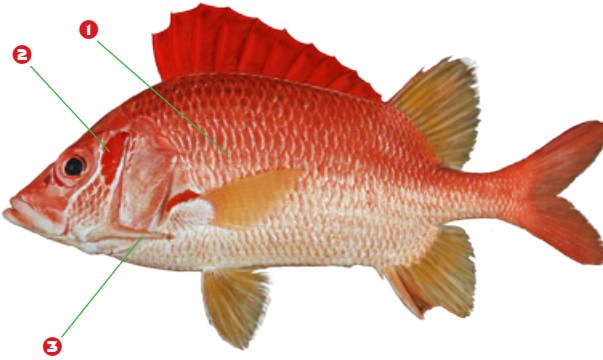
AS	CK	FJ	FM	GU	KI
MH	MP	NC	NR	NU	PF
PG	PN	PW	SB	TK	TO
TV	VU	WF	WS		



HVS *Sargocentron spiniferum*

Holocentridae / Soldierfish and Squirrelfish

Sabre squirrelfish



Red with **1** silvery-white scale margins and a **2** vertically elongated red spot behind eyes.
3 Large spine on cheeks.

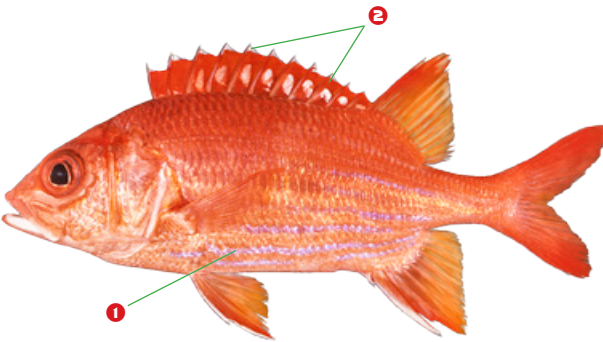
Max length: 45 cm FL

AS	CK	FJ	FM	GU	KI
MH	MP	NC	NR	NU	PF
PG	PN	PW	SB	TK	TO
TV	VU	WF	WS		

HCZ *Sargocentron tiere*

Holocentridae / Soldierfish and Squirrelfish

Bluelined squirrelfish, Tahitian squirrelfish



Red with **1** iridescent blue stripes on side, more evident on lower body. **2** Spiny dorsal fin red with white tips.

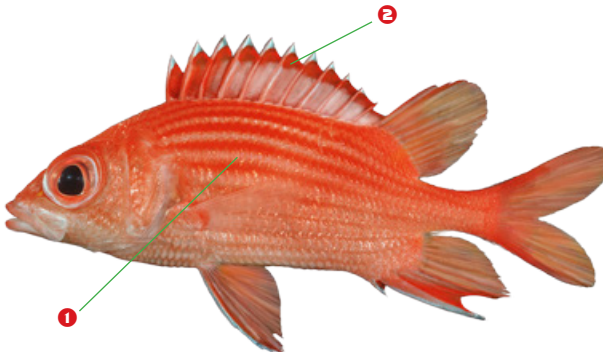
Max length: 30 cm FL

AS	CK	FJ	FM	GU	KI
MH	MP	NC	NR	NU	PF
PG	PN	PW	SB	TK	TO
TV	VU	WF	WS		

HCZ *Sargocentron tiereoides*

Holocentridae / Soldierfish and Squirrelfish

Pink squirrelfish



Red with **1** silvery-pink horizontal stripes on body. **2** Spiny dorsal fin has bright red band below white tips.

Max length: 16 cm FL

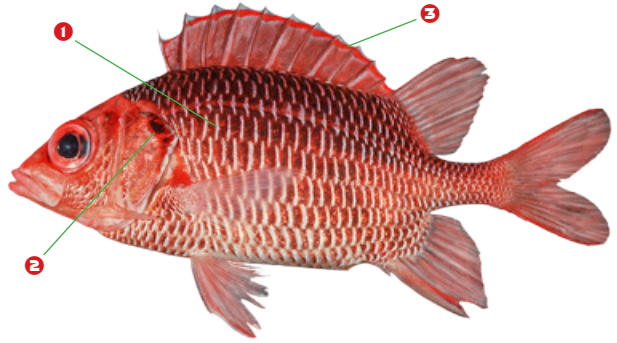
AS	CK	FJ	FM	GU	KI
MH	MP	NC	NR	NU	PF
PG	PN	PW	SB	TK	TO
TV	VU	WF	WS		

Violet squirrelfish

Purplish-brown body with red head. **1** Scales on body have silvery-white to bluish-silver vertical streaks. **2** Dark rear margin of gill covers. **3** Bright red band just below margin of dorsal fin.

Max length: 25 cm FL

AS	CK	FJ	FM	GU	KI
MH	MP	NC	NR	NU	PF
PG	PN	PW	SB	TK	TO
TV	VU	WF	WS		



Silverspot squirrelfish, *Sargocentron caudimaculatum*, Sulawesi, Indonesia.

Photo: Bernard Dupont, Flickr